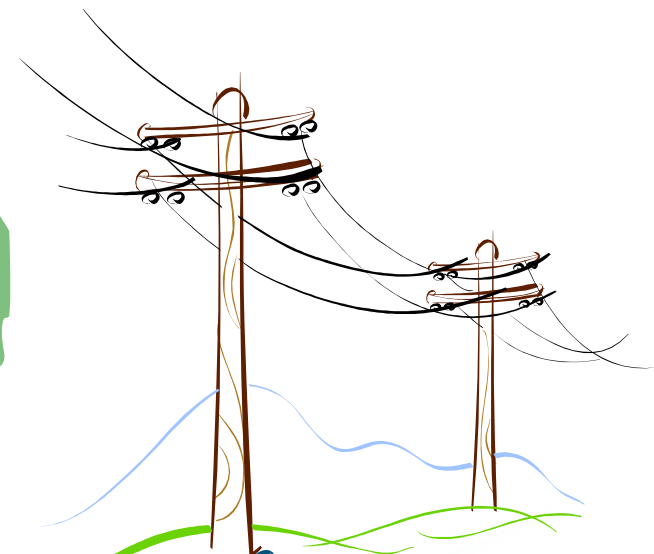
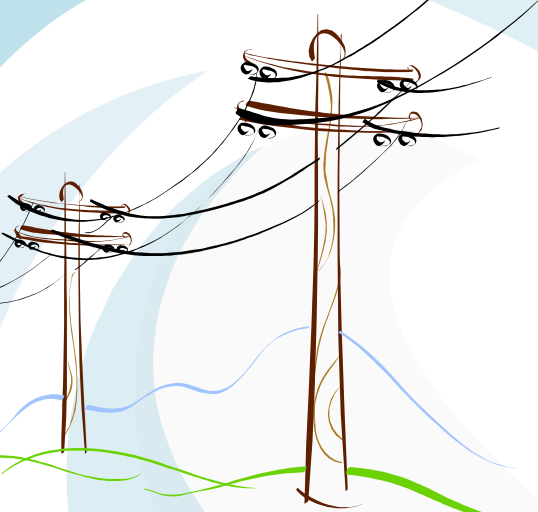
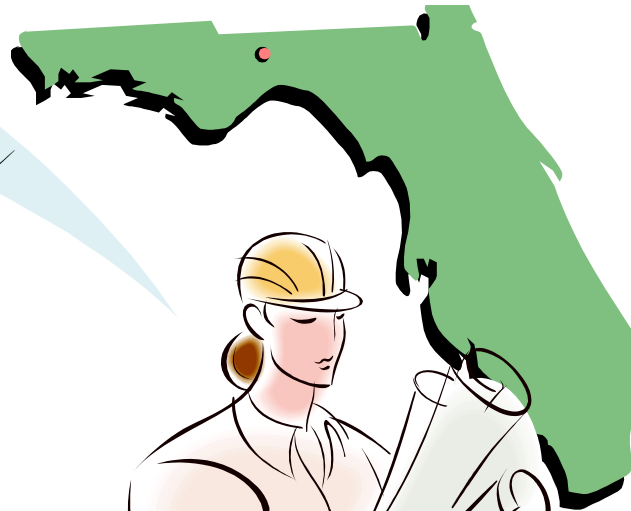


Florida PSC 2016 Hurricane Season Preparation

Duke Energy

March 30, 2016



Hurricane Preparedness



Storm Restoration Organization

- Storm Plan Continuous Improvement
- Annual Pre-Season Storm Drill
- Internal Resources
- External Resources
- Implementation of ICS into Storm Organization



- ▷ PERSONAL ACCOUNTABILITY
- ▷ ACTIVE CARING
- ▷ HAZARD RECOGNITION

Restoration Strategy

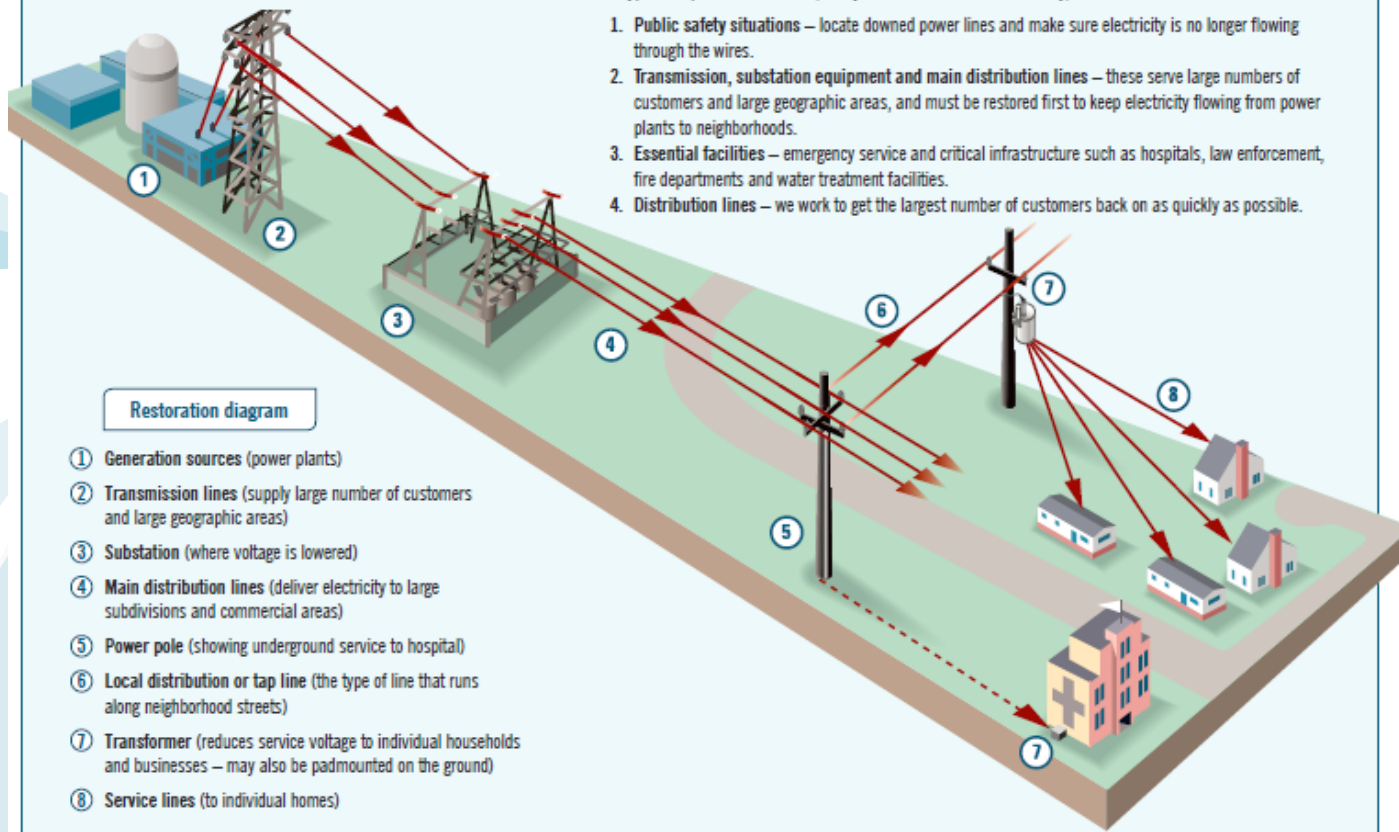
How Duke Energy Restores Power



Duke Energy focuses on restoring power in a sequence that enables power restoration to public health and safety facilities and to the greatest number of customers as safely and quickly as possible.

A typical sequence of activities, many of which occur simultaneously, is as follows:

1. **Public safety situations** – locate downed power lines and make sure electricity is no longer flowing through the wires.
2. **Transmission, substation equipment and main distribution lines** – these serve large numbers of customers and large geographic areas, and must be restored first to keep electricity flowing from power plants to neighborhoods.
3. **Essential facilities** – emergency service and critical infrastructure such as hospitals, law enforcement, fire departments and water treatment facilities.
4. **Distribution lines** – we work to get the largest number of customers back on as quickly as possible.




SAFETYFirst

- ▷ PERSONAL ACCOUNTABILITY
- ▷ ACTIVE CARING
- ▷ HAZARD RECOGNITION

Distribution System

- Pole & Structure Inspections
- System Maintenance
- Vegetation Management
- 10-Point Ongoing Storm Preparedness Plan
- Storm Hardening Rule



Transmission System

- Pole & Structure Inspections
- System Maintenance
- Vegetation Management
- 10-Point Ongoing Storm Preparedness Plan



Local Governmental Coordination

- Cross Functional Coordination Team
- Structured Information Sharing Before, During and After Hurricane
- Electronic Outage Data to EOCs
- Public Communications and Outreach
- “Know Where You Grow” Tree Program



Hurricane Season Preparation Conclusion

- T & D Systems Maintained & Checked
- Storm Organizations prepared and Drilled
- Internal and External Resources Secured or Committed
- Response Plan Tested and Continuously Improved

