

SOUTHERN BELL TELEPHONE AND TELEGRAPH COMPANY  
FLORIDA  
MONTHLY MESSAGES AND CALLING RATE PER ACCESS LINE  
DOCKET NO. 910528-TL ORDER NO. 24717

- PALATKA TO CRESCENT CITY (I), HAWTHORNE, KEYSTONE HEIGHTS, MELROSE (I), ORANGE SPRINGS (I), HAWTHORNE (POCKET), KEYSTONE HEIGHTS (POCKET), MELROSE (POCKET), ORANGE SPRINGS (POCKET)
- HAWTHORNE TO PALATKA, INTERLACHEN (I)
- KEYSTONE HEIGHTS TO PALATKA
- POMONA PARK TO CRESCENT CITY (I)
- WELAKA TO CRESCENT CITY (I)
- HAWTHORNE (POCKET) TO PALATKA
- KEYSTONE HEIGHTS (POCKET) TO PALATKA

STUDY ROUTE	MONTHLY MESSAGES			CALLING RATE PER ACCESS LINE PER MONTH*			
	RESIDENCE	BUSINESS	COMBINED	RESIDENCE	BUSINESS	COMBINED	COMBINED 2-WAY
				ONE - WAY			
PALATKA TO CRESCENT CITY (I)	3955	4218	8173	.32	1.53	.54	N/A
HAWTHORNE TO INTERLACHEN (I)	2244	377	2621	.86	1.37	.91	N/A
POMONA PARK TO CRESCENT CITY (I)	3	0	3	.001	.00	.001	N/A
WELAKA TO CRESCENT CITY (I)	3	2	5	.002	.02	.003	N/A
1 PALATKA TO HAWTHORNE							
2 HAWTHORNE TO PALATKA							
3 PALATKA TO KEYSTONE HEIGHTS							
4 KEYSTONE HEIGHTS TO PALATKA							
5 PALATKA TO MELROSE (I)							N/A
6 PALATKA TO ORANGE SPRINGS (I)							N/A
7 PALATKA TO HAWTHORNE (POCKET)							

Edited version of 9512-91  
DOCUMENT NUMBER-DATE

09511 SEP 24 1991

FPSC-RECORDS/REPORTING

SOUTHERN BELL TELEPHONE AND TELEGRAPH COMPANY  
FLORIDA  
MONTHLY MESSAGES AND CALLING RATE PER ACCESS LINE  
DOCKET NO. 910528-TL ORDER NO. 24717

- PALATKA TO CRESCENT CITY (I), HAWTHORNE, KEYSTONE HEIGHTS, MELROSE (I), ORANGE SPRINGS (I), HAWTHORNE (POCKET), KEYSTONE HEIGHTS (POCKET), MELROSE (POCKET), ORANGE SPRINGS (POCKET)
- HAWTHORNE TO PALATKA, INTERLACHEN (I)
- KEYSTONE HEIGHTS TO PALATKA
- POMONA PARK TO CRESCENT CITY (I)
- WELAKA TO CRESCENT CITY (I)
- HAWTHORNE (POCKET) TO PALATKA
- KEYSTONE HEIGHTS (POCKET) TO PALATKA

<u>STUDY ROUTE</u>	<u>MONTHLY MESSAGES</u>			<u>CALLING RATE PER ACCESS LINE PER MONTH*</u>			
	<u>RESIDENCE</u>	<u>BUSINESS</u>	<u>COMBINED</u>	<u>RESIDENCE</u>	<u>BUSINESS</u>	<u>COMBINED</u>	<u>COMBINED 2-WAY</u>
				<u>ONE - WAY</u>			
1 PALATKA TO KEYSTONE HEIGHTS (POCKET)							
2 PALATKA TO MELROSE (I)(POCKET)							N/A
3 PALATKA TO ORANGE SPRINGS (I)(POCKET)							N/A
4 HAWTHORNE (POCKET) TO PALATKA							
5 KEYSTONE HEIGHTS (POCKET) TO PALATKA							

\* Official, coin and centrex messages are not included in call distribution studies; therefore, official, coin and centrex access lines from Attachment C were excluded in calculating calling rates.

Source: Call Distribution Study (07-01-91 thru 07-30-91)

SOUTHERN BELL TELEPHONE AND TELEGRAPH COMPANY  
FLORIDA  
MONTHLY MESSAGES AND CALLING RATE PER ACCESS LINE  
DOCKET NO. 910528-TL ORDER NO. 24717

- PALATKA TO CRESCENT CITY (I), HAWTHORNE, KEYSTONE HEIGHTS, MELROSE (I), ORANGE SPRINGS (I), HAWTHORNE (POCKET), KEYSTONE HEIGHTS (POCKET), MELROSE (POCKET), ORANGE SPRINGS (POCKET)
  - HAWTHORNE TO PALATKA, INTERLACHEN (I)
  - KEYSTONE HEIGHTS TO PALATKA
  - POMONA PARK TO CRESCENT CITY (I)
  - WELAKA TO CRESCENT CITY (I)
  - HAWTHORNE (POCKET) TO PALATKA
  - KEYSTONE HEIGHTS (POCKET) TO PALATKA
- ONE-WAY

<u>ROUTE</u>	<u>ACCESS LINES &amp; TRUNKS*</u>	<u>MESSAGES</u>	<u>CALLING RATE M/M/M</u>	<u>TOTAL CUSTOMERS</u>	<u>CUSTOMERS MAKING 2 OR MORE CALLS/MONTH</u>	
					<u>NUMBER</u>	<u>PERCENT</u>
PART I - ROUTES OVER 3 M/M/M						
PART II - ROUTES 2.99 TO 2.00 M/M/M						
PART III - ROUTES 1.99 TO 1.00 M/M/M						
<u>1</u> HAWTHORNE TO PALATKA	2874			3090		
PART IV - ROUTES BELOW .99 M/M/M						
PALATKA TO CRESCENT CITY (I)	15005	8173	.54	15412	1043	6.77
HAWTHORNE TO INTERLACHEN (I)	2874	2621	.91	3090	332	10.74
POMONA PARK TO CRESCENT CITY (I)	2451	3	.001	2703	1	.04
WELAKA TO CRESCENT CITY (I)	1998	5	.003	2114	1	.05
<u>2</u> PALATKA TO HAWTHORNE	15005			15412		
<u>3</u> PALATKA TO KEYSTONE HEIGHTS	15005			15412		
<u>4</u> KEYSTONE HEIGHTS TO PALATKA	4510			4875		

SOUTHERN BELL TELEPHONE AND TELEGRAPH COMPANY  
FLORIDA

MONTHLY MESSAGES AND CALLING RATE PER ACCESS LINE  
DOCKET NO. 910528-TL ORDER NO. 24717

- PALATKA TO CRESCENT CITY (I), HAWTHORNE, KEYSTONE HEIGHTS, MELROSE (I), ORANGE SPRINGS (I), HAWTHORNE (POCKET), KEYSTONE HEIGHTS (POCKET), MELROSE (POCKET), ORANGE SPRINGS (POCKET)
  - HAWTHORNE TO PALATKA, INTERLACHEN (I)
  - KEYSTONE HEIGHTS TO PALATKA
  - POMONA PARK TO CRESCENT CITY (I)
  - WELAKA TO CRESCENT CITY (I)
  - HAWTHORNE (POCKET) TO PALATKA
  - KEYSTONE HEIGHTS (POCKET) TO PALATKA
- ONE-WAY

<u>ROUTE</u>	<u>ACCESS LINES &amp; TRUNKS*</u>	<u>MESSAGES</u>	<u>CALLING RATE M/M/M</u>	<u>TOTAL CUSTOMERS</u>	<u>CUSTOMERS MAKING 2 OR MORE CALLS/MONTH</u>	
					<u>NUMBER</u>	<u>PERCENT</u>
PART I - ROUTES OVER 3 M/M/M						
PART II - ROUTES 2.99 TO 2.00 M/M/M						
1 KEYSTONE HEIGHTS (POCKET) TO PALATKA		170		170		
PART III - ROUTES 1.99 TO 1.00 M/M/M						
2 HAWTHORNE (POCKET) TO PALATKA		1381		1381		
PART IV - ROUTES BELOW .99 M/M/M						
3 PALATKA TO MELROSE (I)		15005		15412		
4 PALATKA TO ORANGE SPRINGS (I)		15005		15412		
5 PALATKA TO HAWTHORNE (POCKET)		15005		15412		
6 PALATKA TO KEYSTONE HEIGHTS (POCKET)		15005		15412		
7 PALATKA TO MELROSE (I)(POCKET)		15005		15412		
8 PALATKA TO ORANGE SPRINGS (I)(POCKET)		15005		15412		

\* Official, coin and centrex messages are not included in call distribution studies; therefore, official, coin and centrex access lines from Attachment C were excluded in calculating calling rates.

Source: Call Distribution Study (07-01-91 thru 07-30-91)

SOUTHERN BELL TELEPHONE AND TELEGRAPH COMPANY  
FLORIDA  
MONTHLY MESSAGES AND CALLING RATE PER ACCESS LINE  
DOCKET NO. 910528-TL ORDER NO. 24717

- PALATKA TO CRESCENT CITY (I), HAWTHORNE, KEYSTONE HEIGHTS, MELROSE (I), ORANGE SPRINGS (I), HAWTHORNE (POCKET), KEYSTONE HEIGHTS (POCKET), MELROSE (POCKET), ORANGE SPRINGS (POCKET)
  - HAWTHORNE TO PALATKA, INTERLACHEN (I)
  - KEYSTONE HEIGHTS TO PALATKA
  - POMONA PARK TO CRESCENT CITY (I)
  - WELAKA TO CRESCENT CITY (I)
  - HAWTHORNE (POCKET) TO PALATKA
  - KEYSTONE HEIGHTS (POCKET) TO PALATKA
- TWO-WAY

ROUTE	ACCESS LINES & TRUNKS*	MESSAGES	CALLING RATE M/M/M	TOTAL CUSTOMERS	CUSTOMERS MAKING 1 OR MORE CALLS/MONTH	
					NUMBER	PERCENT

PART I - ROUTES OVER 3 M/M/M

PART II - ROUTES 2.99 TO 2.00 M/M/M

PART III - ROUTES 1.99 TO 1.00 M/M/M

PART IV - ROUTES BELOW .99 M/M/M

1	PALATKA TO/FM HAWTHORNE	17879		18502		
2	PALATKA TO/FM KEYSTONE HEIGHTS	19515		20287		
3	PALATKA TO/FM HAWTHORNE (POCKET)	16386		16793		
4	PALATKA TO/FM KEYSTONE HEIGHTS (POCKET)	15175		15582		

\* Official, coin and centrex messages are not included in call distribution studies; therefore, official, coin and centrex access lines from Attachment C were excluded in calculating calling rates.

Source: Call Distribution Study (07-01-91 thru 07-01-91)

Long Distance Calling for Southern Bell Exchanges, As Follows:

Study Period 07/01/91 through 07/30/91

Route: PALATKA TO CRESCENT CITY (I)

NUMBER OF ACCOUNTS MAKING CALLS AT THESE LEVELS

NUMBER OF MESSAGES PLACED BY THESE LEVELS

MESSAGE LEVEL PER ACCOUNT	RES	BUS	RES BUS TOTAL	PERCENT OF TOTAL	ACCUM. PERCENT OF TOTAL	RES	BUS	RES BUS TOTAL	PERCENT OF TOTAL	ACCUM. PERCENT OF TOTAL
26 +	12	33	45	0.29%	0.29%	450	1430	1880	23.00%	23.00%
25	3	2	5	0.03%	0.32%	75	50	125	1.53%	24.53%
24	2	2	4	0.03%	0.35%	48	48	96	1.17%	25.71%
23	0	0	0	0.00%	0.35%	0	0	0	0.00%	25.71%
22	1	1	2	0.01%	0.36%	22	22	44	0.54%	26.24%
21	0	6	6	0.04%	0.40%	0	126	126	1.54%	27.79%
20	4	3	7	0.05%	0.45%	80	60	140	1.71%	29.50%
19	4	6	10	0.06%	0.51%	76	114	190	2.32%	31.82%
18	1	4	5	0.03%	0.55%	18	72	90	1.10%	32.93%
17	3	5	8	0.05%	0.60%	51	85	136	1.66%	34.59%
16	6	7	13	0.08%	0.68%	96	112	208	2.54%	37.13%
15	5	8	13	0.08%	0.77%	75	120	195	2.39%	39.52%
14	7	8	15	0.10%	0.86%	98	112	210	2.57%	42.09%
13	11	7	18	0.12%	0.98%	143	91	234	2.86%	44.95%
12	6	9	15	0.10%	1.08%	72	108	180	2.20%	47.16%
11	6	6	12	0.08%	1.15%	66	66	132	1.62%	48.77%
10	13	14	27	0.18%	1.33%	130	140	270	3.30%	52.07%
9	14	10	24	0.16%	1.49%	126	90	216	2.64%	54.72%
8	25	20	45	0.29%	1.78%	200	160	360	4.40%	59.12%
7	21	25	46	0.30%	2.08%	147	175	322	3.94%	63.06%
6	35	28	63	0.41%	2.49%	210	168	378	4.62%	67.69%
5	38	19	57	0.37%	2.85%	190	95	285	3.49%	71.17%
4	62	50	112	0.73%	3.58%	248	200	448	5.48%	76.65%
3	110	60	170	1.10%	4.68%	330	180	510	6.24%	82.89%
2	223	98	321	2.08%	6.77%	446	196	642	7.86%	90.75%
1	558	198	756	4.91%	11.67%	558	198	756	9.25%	100.00%
0	11482	2131	13613	88.33%	100.00%	0	0	0	0.00%	
TOTAL	12652	2760	15412	100.00%		3955	4218	8173	100.00%	

Long Distance Calling for Southern Bell Exchanges, As Follows:

Study Period 07/01/91 through 07/30/91

Route: HAWTHORNE TO INTERLACHEN (I)

NUMBER OF ACCOUNTS MAKING CALLS AT THESE LEVELS

NUMBER OF MESSAGES PLACED BY THESE LEVELS

MESSAGE LEVEL PER ACCOUNT	RES	BUS	RES BUS TOTAL	PERCENT OF TOTAL	ACCUM. PERCENT OF TOTAL	RES	BUS	RES BUS TOTAL	PERCENT OF TOTAL	ACCUM. PERCENT OF TOTAL
26 +	15	5	20	0.65%	0.65%	476	177	653	24.91%	24.91%
25	1	0	1	0.03%	0.68%	25	0	25	0.95%	25.87%
24	0	0	0	0.00%	0.68%	0	0	0	0.00%	25.87%
23	0	0	0	0.00%	0.68%	0	0	0	0.00%	25.87%
22	0	1	1	0.03%	0.71%	0	22	22	0.84%	26.71%
21	3	0	3	0.10%	0.81%	63	0	63	2.40%	29.11%
20	1	0	1	0.03%	0.84%	20	0	20	0.76%	29.87%
19	3	1	4	0.13%	0.97%	57	19	76	2.90%	32.77%
18	1	0	1	0.03%	1.00%	18	0	18	0.69%	33.46%
17	4	1	5	0.16%	1.17%	68	17	85	3.24%	36.70%
16	3	0	3	0.10%	1.26%	48	0	48	1.83%	38.53%
15	4	0	4	0.13%	1.39%	60	0	60	2.29%	40.82%
14	5	0	5	0.16%	1.55%	70	0	70	2.67%	43.49%
13	8	0	8	0.26%	1.81%	104	0	104	3.97%	47.46%
12	1	0	1	0.03%	1.84%	12	0	12	0.46%	47.92%
11	5	0	5	0.16%	2.01%	55	0	55	2.10%	50.02%
10	8	2	10	0.32%	2.33%	80	20	100	3.82%	53.83%
9	11	1	12	0.39%	2.72%	99	9	108	4.12%	57.95%
8	9	0	9	0.29%	3.01%	72	0	72	2.75%	60.70%
7	13	1	14	0.45%	3.46%	91	7	98	3.74%	64.44%
6	17	4	21	0.68%	4.14%	102	24	126	4.81%	69.25%
5	21	0	21	0.68%	4.82%	105	0	105	4.01%	73.25%
4	40	7	47	1.52%	6.34%	160	28	188	7.17%	80.43%
3	44	5	49	1.59%	7.93%	132	15	147	5.61%	86.04%
2	79	8	87	2.82%	10.74%	158	16	174	6.64%	92.67%
1	169	23	192	6.21%	16.96%	169	23	192	7.33%	100.00%
0	2188	378	2566	83.04%	100.00%	0	0	0	0.00%	
TOTAL	2653	437	3090	100.00%		2244	377	2621	100.00%	

Long Distance Calling for Southern Bell Exchanges, As Follows:

Study Period 07/01/91 through 07/30/91

Route: POMOHA PARK TO CRESCENT CITY (I)

NUMBER OF ACCOUNTS MAKING CALLS AT THESE LEVELS

NUMBER OF MESSAGES PLACED BY THESE LEVELS

MESSAGE LEVEL PER ACCOUNT	RES	BUS	RES BUS TOTAL	PERCENT OF TOTAL	ACCUM. PERCENT OF TOTAL	RES	BUS	RES BUS TOTAL	PERCENT OF TOTAL	ACCUM. PERCENT OF TOTAL
26 +	0	0	0	0.00%	0.00%	0	0	0	0.00%	0.00%
25	0	0	0	0.00%	0.00%	0	0	0	0.00%	0.00%
24	0	0	0	0.00%	0.00%	0	0	0	0.00%	0.00%
23	0	0	0	0.00%	0.00%	0	0	0	0.00%	0.00%
22	0	0	0	0.00%	0.00%	0	0	0	0.00%	0.00%
21	0	0	0	0.00%	0.00%	0	0	0	0.00%	0.00%
20	0	0	0	0.00%	0.00%	0	0	0	0.00%	0.00%
19	0	0	0	0.00%	0.00%	0	0	0	0.00%	0.00%
18	0	0	0	0.00%	0.00%	0	0	0	0.00%	0.00%
17	0	0	0	0.00%	0.00%	0	0	0	0.00%	0.00%
16	0	0	0	0.00%	0.00%	0	0	0	0.00%	0.00%
15	0	0	0	0.00%	0.00%	0	0	0	0.00%	0.00%
14	0	0	0	0.00%	0.00%	0	0	0	0.00%	0.00%
13	0	0	0	0.00%	0.00%	0	0	0	0.00%	0.00%
12	0	0	0	0.00%	0.00%	0	0	0	0.00%	0.00%
11	0	0	0	0.00%	0.00%	0	0	0	0.00%	0.00%
10	0	0	0	0.00%	0.00%	0	0	0	0.00%	0.00%
9	0	0	0	0.00%	0.00%	0	0	0	0.00%	0.00%
8	0	0	0	0.00%	0.00%	0	0	0	0.00%	0.00%
7	0	0	0	0.00%	0.00%	0	0	0	0.00%	0.00%
6	0	0	0	0.00%	0.00%	0	0	0	0.00%	0.00%
5	0	0	0	0.00%	0.00%	0	0	0	0.00%	0.00%
4	0	0	0	0.00%	0.00%	0	0	0	0.00%	0.00%
3	0	0	0	0.00%	0.00%	0	0	0	0.00%	0.00%
2	1	0	1	0.04%	0.04%	2	0	2	66.67%	66.67%
1	1	0	1	0.04%	0.07%	1	0	1	33.33%	100.00%
0	2391	310	2701	99.93%	100.00%	0	0	0	0.00%	
<b>TOTAL</b>	<b>2393</b>	<b>310</b>	<b>2703</b>	<b>100.00%</b>		<b>3</b>	<b>0</b>	<b>3</b>	<b>100.00%</b>	



Long Distance Calling for Southern Bell Exchanges, As Follows:

Study Period 07/01/91 through 07/30/91

Route: WELAKA TO CRESCENT CITY (I)

NUMBER OF ACCOUNTS MAKING CALLS AT THESE LEVELS

NUMBER OF MESSAGES PLACED BY THESE LEVELS

MESSAGE LEVEL PER ACCOUNT	RES	BUS	RES BUS TOTAL	PERCENT OF TOTAL	ACCUM. PERCENT OF TOTAL	RES	BUS	RES BUS TOTAL	PERCENT OF TOTAL	ACCUM. PERCENT OF TOTAL
26 +	0	0	0	0.00%	0.00%	0	0	0	0.00%	0.00%
25	0	0	0	0.00%	0.00%	0	0	0	0.00%	0.00%
24	0	0	0	0.00%	0.00%	0	0	0	0.00%	0.00%
23	0	0	0	0.00%	0.00%	0	0	0	0.00%	0.00%
22	0	0	0	0.00%	0.00%	0	0	0	0.00%	0.00%
21	0	0	0	0.00%	0.00%	0	0	0	0.00%	0.00%
20	0	0	0	0.00%	0.00%	0	0	0	0.00%	0.00%
19	0	0	0	0.00%	0.00%	0	0	0	0.00%	0.00%
18	0	0	0	0.00%	0.00%	0	0	0	0.00%	0.00%
17	0	0	0	0.00%	0.00%	0	0	0	0.00%	0.00%
16	0	0	0	0.00%	0.00%	0	0	0	0.00%	0.00%
15	0	0	0	0.00%	0.00%	0	0	0	0.00%	0.00%
14	0	0	0	0.00%	0.00%	0	0	0	0.00%	0.00%
13	0	0	0	0.00%	0.00%	0	0	0	0.00%	0.00%
12	0	0	0	0.00%	0.00%	0	0	0	0.00%	0.00%
11	0	0	0	0.00%	0.00%	0	0	0	0.00%	0.00%
10	0	0	0	0.00%	0.00%	0	0	0	0.00%	0.00%
9	0	0	0	0.00%	0.00%	0	0	0	0.00%	0.00%
8	0	0	0	0.00%	0.00%	0	0	0	0.00%	0.00%
7	0	0	0	0.00%	0.00%	0	0	0	0.00%	0.00%
6	0	0	0	0.00%	0.00%	0	0	0	0.00%	0.00%
5	0	0	0	0.00%	0.00%	0	0	0	0.00%	0.00%
4	0	0	0	0.00%	0.00%	0	0	0	0.00%	0.00%
3	0	0	0	0.00%	0.00%	0	0	0	0.00%	0.00%
2	0	1	1	0.05%	0.05%	0	2	2	40.00%	40.00%
1	3	0	3	0.14%	0.19%	3	0	3	60.00%	100.00%
0	1900	210	2110	99.81%	100.00%	0	0	0	0.00%	
TOTAL	1903	211	2114	100.00%		3	2	5	100.00%	

Long Distance Calling for Southern Bell Exchanges, As Follows:

Study Period 07/01/91 through 07/30/91

Route: PALATKA TO HAWTHORNE

NUMBER OF ACCOUNTS MAKING CALLS AT THESE LEVELS

NUMBER OF MESSAGES PLACED BY THESE LEVELS

MESSAGE LEVEL PER ACCOUNT	RES	BUS	RES BUS TOTAL	PERCENT OF TOTAL	ACCUM. PERCENT OF TOTAL	RES	BUS	RES BUS TOTAL	PERCENT OF TOTAL	ACCUM. PERCENT OF TOTAL
26 +										
25										
24										
23										
22										
21										
20										
19										
18										
17										
16										
15										
14										
13										
12										
11										
10										
9										
8										
7										
6										
5										
4										
3										
2										
1										
0										
TOTAL										

1  
2  
3  
4  
5  
6  
7  
8  
9  
10  
11  
12  
13  
14  
15  
16  
17  
18  
19  
20  
21  
22  
23  
24  
25  
26  
27

28





Long Distance Calling for Southern Bell Exchanges, As Follows:

Study Period 07/01/91 through 07/30/91

Route: KEYSTONE HEIGHTS TO PALATKA

NUMBER OF ACCOUNTS MAKING CALLS AT THESE LEVELS

NUMBER OF MESSAGES PLACED BY THESE LEVELS

MESSAGE LEVEL PER ACCOUNT	RES	BUS	RES BUS TOTAL	PERCENT OF TOTAL	ACCUM. PERCENT OF TOTAL	RES	BUS	RES BUS TOTAL	PERCENT OF TOTAL	ACCUM. PERCENT OF TOTAL
26 +										
25										
24										
23										
22										
21										
20										
19										
18										
17										
16										
15										
14										
13										
12										
11										
10										
9										
8										
7										
6										
5										
4										
3										
2										
1										
0										
28 TOTAL										

26 +  
25  
24  
23  
22  
21  
20  
19  
18  
17  
16  
15  
14  
13  
12  
11  
10  
9  
8  
7  
6  
5  
4  
3  
2  
1  
0  
28 TOTAL















Long Distance Calling for Southern Bell Exchanges, As Follows:

Study Period 07/01/91 through 07/30/91

Route: HAWTHORNE (POCKET) TO PALATKA

NUMBER OF ACCOUNTS MAKING CALLS AT THESE LEVELS      NUMBER OF MESSAGES PLACED BY THESE LEVELS

MESSAGE LEVEL PER ACCOUNT	RES	BUS	RES BUS TOTAL	PERCENT OF TOTAL	ACCUM. PERCENT OF TOTAL	RES	BUS	RES BUS TOTAL	PERCENT OF TOTAL	ACCUM. PERCENT OF TOTAL
1	26	+								
2	25									
3	24									
4	23									
5	22									
6	21									
7	20									
8	19									
9	18									
10	17									
11	16									
12	15									
13	14									
14	13									
15	12									
16	11									
17	10									
18	9									
19	8									
20	7									
21	6									
22	5									
23	4									
24	3									
25	2									
26	1									
27	0									
28	TOTAL									

ern Bell Exchanges, As Follows:

7/30/91

T) TO PALATKA

S AT THESE LEVELS      NUMBER OF MESSAGES PLACED BY THESE LEVELS

	PERCENT OF TOTAL	ACCUM. PERCENT OF TOTAL	RES	BUS	RES BUS TOTAL	PERCENT OF TOTAL	ACCUM. PERCENT OF TOTAL
--	------------------------	----------------------------------	-----	-----	---------------------	------------------------	----------------------------------

TELEPHONE LINES IN THE SOUTHERN BELL EXCHANGES  
PALATKA, KEYSTONE HEIGHTS, HAWTHORNE  
DOCKET NO. 910528-TL, ORDER NO. 24717  
STATION CLASSIFICATION DATA\*

	PALATKA	KEYSTONE HEIGHTS	HAWTHORNE
1FR	12247	4046	2599
1FR-Rotary	0	0	0
2FR	0	0	0
4FR	0	0	0
Measured Service	0	0	0
<b>RESIDENCE SUBTOTAL</b>	<b>12247</b>	<b>4046</b>	<b>2599</b>
1FB Without Rotary + Business Auxiliary	1620	348	198
1FB With Rotary	853	77	45
2FB	0	0	0
4FB	0	0	0
1MB	44	7	16
Measured Business	0	0	0
SPT	21	8	1
Mobile	4	0	0
PBX - 1st MSG TRK	N/A	N/A	N/A
PBX - Total MSG TRK	24	0	0
PBX - Measured Trunk	0	0	2
PBX - Flat Inward	36	2	13
PBX - Flat Out and 2 Way	156	22	0
<b>BUSINESS SUBTOTAL</b>	<b>2758</b>	<b>464</b>	<b>275</b>
Sub Owned PBX & CTX	N/A	N/A	N/A
Centrex Lines	1207	16	60
Official	142	62	38
PT	267	40	26
<b>TOTAL</b>	<b>16621</b>	<b>4628</b>	<b>2998</b>

\*Source: Monthly Report #7 - As of 06-30-91

TELEPHONE LINES IN THE SOUTHERN BELL EXCHANGES  
POMONA PARK, WELAKA  
DOCKET NO. 910528-TL, ORDER NO. 24717  
STATION CLASSIFICATION DATA\*

	POMONA PARK	WELAKA
1FR	2340	1867
1FR - Rotary	0	2
2FR	0	0
4FR	0	0
Measured Service	0	0
RESIDENCE SUBTOTAL	2340	1869
1FB Without Rotary + Business Auxiliary	87	107
1FB With Rotary	17	17
2FB	0	0
FB	0	0
1MB	4	3
Measured Business	0	0
SPT	3	2
Mobile	0	0
PEX - 1st MSG TRK	N/A	N/A
PEX - Total MSG TRK	0	0
PEX - Measured Trunk	0	0
PEX - Flat Inward	0	0
PEX - Flat Out and 2 Way	0	0
BUSINESS SUBTOTAL	111	129
Sub Owned PEX & CTX	N/A	N/A
Centrex Lines	36	0
Official	37	28
PT	10	26
TOTAL	2534	2052

\*Source: Monthly Report #7 - As of 06-30-91

SOUTHERN BELL TELEPHONE AND TELEGRAPH COMPANY  
FLORIDA  
LONG DISTANCE TOLL INFORMATION FOR

- PALATKA TO CRESCENT CITY (I), HAWTHORNE, KEYSTONE HEIGHTS, MELROSE (I), ORANGE SPRINGS (I), HAWTHORNE (POCKET), KEYSTONE HEIGHTS (POCKET), MELROSE (POCKET), ORANGE SPRINGS (POCKET)
- HAWTHORNE TO PALATKA, INTERLACHEN (I)
- KEYSTONE HEIGHTS TO PALATKA
- POMONA PARK TO CRESCENT CITY (I)
- WELAKA TO CRESCENT CITY (I)
- HAWTHORNE (POCKET) TO PALATKA
- KEYSTONE HEIGHTS (POCKET) TO PALATKA

		RATE (DAY PERIOD)		AIRLINE	REV
		<u>INITIAL MINUTE</u>	<u>OVERTIME MINUTE</u>	<u>MILES *</u>	<u>PER MSG</u>
FROM:	PALATKA				
TO:	CRESCENT CITY (I)	.18	.12	17	.51
FROM:	HAWTHORNE				
TO:	INTERLACHEN (I)	.18	.12	13	.66
FROM:	POMONA PARK				
TO:	CRESCENT CITY (I)	.15	.08	7	5.14
FROM:	WELAKA				
TO:	CRESCENT CITY (I)	.15	.08	10	1.14
1	FROM: PALATKA TO: HAWTHORNE	.27	.22	27	
2	FROM: HAWTHORNE TO: PALATKA	.27	.22	27	
3	FROM: PALATKA TO: KEYSTONE HEIGHTS	.27	.22	25	
4	FROM: KEYSTONE HEIGHTS TO: PALATKA	.27	.22	25	
5	FROM: PALATKA TO: MELROSE (I)	.27	.22	26	

\*RATE CENTER TO RATE CENTER



SOUTHERN BELL TELEPHONE AND TELEGRAPH COMPANY  
FLORIDA  
LONG DISTANCE TOLL INFORMATION FOR

- PALATKA TO CRESCENT CITY (I), HAWTHORNE, KEYSTONE HEIGHTS, MELROSE (I), ORANGE SPRINGS (I), HAWTHORNE (POCKET), KEYSTONE HEIGHTS (POCKET), MELROSE (POCKET), ORANGE SPRINGS (POCKET)
- HAWTHORNE TO PALATKA, INTERLACHEN (I)
- KEYSTONE HEIGHTS TO PALATKA
- POMONA PARK TO CRESCENT CITY (I)
- WELAKA TO CRESCENT CITY (I)
- HAWTHORNE (POCKET) TO PALATKA
- KEYSTONE HEIGHTS (POCKET) TO PALATKA

	FROM:	TO:	RATE (DAY PERIOD)		AIRLINE	REV
			<u>INITIAL MINUTE</u>	<u>OVERTIME MINUTE</u>	<u>MILES *</u>	<u>PER MSG</u>
1	PALATKA	ORANGE SPRINGS (I)	.27	.16	21	
2	PALATKA	HAWTHORNE (POCKET)	.27	.22	27	
3	PALATKA	KEYSTONE HEIGHTS (POCKET)	.27	.22	25	
4	PALATKA	MELROSE (I)(POCKET)	.27	.22	26	
5	PALATKA	ORANGE SPRINGS(I)(POCKET)	.27	.16	21	
6	HAWTHORNE (POCKET)	PALATKA	.27	.22	27	
7	KEYSTONE HEIGHTS (POCKET)	PALATKA	.27	.22	25	

\*RATE CENTER TO RATE CENTER

FSD: MJ0. J0-2-C  
 DATE: 09/18/91  
 TIME: 15:19  
 CYCLE: 207

EAS/OPTIONAL CALLING PLAN STUDY  
 PALATKA TO CRESCENT CITY(I) - RES

FORM: 4311-3  
 RETAIN: OPT  
 AREA: JACKSONVILL  
 PAGE: 3

JES NUMBER: JOB07638 JOB NAME: MJ04A03 JOB STEP: MJ04A03 PROC STEP: S010

PROGRAM NAME: MJ04A020

ORIGINATING RATE-CENTER: 181\*\*\*\*\*  
 TERMINATING RATE-CENTER: 050\*\*\*\*\*

STUDY PERIOD: 07/01/91 THRU 07/30/91  
 REQUEST NUMBER: 02

MESSAGES BY RATE CLASS

HR OF DAY	DAY RATE				EVENING RATE				NIGHT RATE/WEEKEND			
	BUS	RES	COIN	TOTAL	BUS	RES	COIN	TOTAL	BUS	RES	COIN	TOTAL
AM 8	0	148	0	148	0	0	0	0	0	43	0	43
9	0	218	0	218	0	0	0	0	0	68	0	68
10	0	225	0	225	0	0	0	0	0	43	0	43
11	0	171	0	171	0	0	0	0	0	63	0	63
12	0	180	0	180	0	0	0	0	0	73	0	73
PM 1	0	199	0	199	0	0	0	0	0	65	0	65
2	0	190	0	190	0	0	0	0	0	56	0	56
3	0	194	0	194	0	0	0	0	0	62	0	62
4	0	231	0	231	0	0	0	0	0	57	0	57
5	0	0	0	0	0	250	0	250	0	64	0	64
6	0	0	0	0	0	198	0	198	0	57	0	57
7	0	0	0	0	0	215	0	215	0	45	0	45
8	0	0	0	0	0	206	0	206	0	58	0	58
9	0	0	0	0	0	176	0	176	0	76	0	76
10	0	0	0	0	0	87	0	87	0	54	0	54
11	0	0	0	0	0	0	0	0	0	41	0	41
12	0	0	0	0	0	0	0	0	0	14	0	14
AM 1	0	0	0	0	0	0	0	0	0	14	0	14
2	0	0	0	0	0	0	0	0	0	3	0	3
3	0	0	0	0	0	0	0	0	0	1	0	1
4	0	0	0	0	0	0	0	0	0	6	0	6
5	0	0	0	0	0	0	0	0	0	2	0	2
6	0	0	0	0	0	0	0	0	0	31	0	31
7	0	0	0	0	0	0	0	0	0	71	0	71
TOTAL	0	1,756	0	1,756	0	1,132	0	1,132	0	1,067	0	1,067

Attachment D  
 Docket No. 910528 - TL  
 Order No. 24717  
 Page 2 of 65

FSD: MJG. J0-2-C  
 DATE: 09/18/91  
 TIME: 15:19  
 CYCLE: 207 JES NUMBER: JOB07638 JOB NAME: MJ04A03 JOB STEP: MJ04A03 PROC STEP: S010

EAS/OPTIONAL CALLING PLAN STUDY  
 Palatka to Crescent City(I) - RES

PROGRAM NAME: MJ04A020

FORM: 4311-3  
 RETAIN: OPT  
 AREA: JACKSONVILL  
 PAGE: 4

ORIGINATING RATE-CENTER: 181\*\*\*\*\*  
 TERMINATING RATE-CENTER: 050\*\*\*\*\*

STUDY PERIOD: 07/01/91 THRU 07/30/91  
 REQUEST NUMBER: 02

MINUTES OF USAGE BY RATE CLASS

HR OF DAY	DAY RATE				EVENING RATE				NIGHT RATE/WEEKEND			
	BUS	RES	COIN	TOTAL	BUS	RES	COIN	TOTAL	BUS	RES	COIN	TOTAL
AM 8	0	488	0	488	0	0	0	0	0	124	0	124
9	0	818	0	818	0	0	0	0	0	347	0	347
10	0	848	0	848	0	0	0	0	0	131	0	131
11	0	631	0	631	0	0	0	0	0	196	0	196
12	0	640	0	640	0	0	0	0	0	345	0	345
PM 1	0	650	0	650	0	0	0	0	0	207	0	207
2	0	564	0	564	0	0	0	0	0	213	0	213
3	0	687	0	687	0	0	0	0	0	362	0	362
4	0	759	0	759	0	0	0	0	0	258	0	258
5	0	0	0	0	0	785	0	785	0	269	0	269
6	0	0	0	0	0	931	0	931	0	371	0	371
7	0	0	0	0	0	1,167	0	1,167	0	170	0	170
8	0	0	0	0	0	1,201	0	1,201	0	284	0	284
9	0	0	0	0	0	1,303	0	1,303	0	535	0	535
10	0	0	0	0	0	654	0	654	0	275	0	275
11	0	0	0	0	0	0	0	0	0	369	0	369
12	0	0	0	0	0	0	0	0	0	50	0	50
AM 1	0	0	0	0	0	0	0	0	0	78	0	78
2	0	0	0	0	0	0	0	0	0	6	0	6
3	0	0	0	0	0	0	0	0	0	2	0	2
4	0	0	0	0	0	0	0	0	0	27	0	27
5	0	0	0	0	0	0	0	0	0	0	0	0
6	0	0	0	0	0	0	0	0	0	61	0	61
7	0	0	0	0	0	0	0	0	0	186	0	186
TOTAL	0	6,085	0	6,085	0	6,041	0	6,041	0	4,866	0	4,866

Attachment D  
 Docket No. 910528 - TL  
 Order No. 24717  
 Page 3 of 65

FSD: MJG. 00-2-C  
 DATE: 09/18/91  
 TIME: 15:19  
 CYCLE: 207 JES NUMBER: JOB07638

EAS/OPTIONAL CALLING PLAN STUDY  
 Palatka to Crescent City(1) - BUS

FORM: 4311-3  
 RETAIN: OPT  
 AREA: JACKSONVILL  
 PAGE: 3

JOB NAME: MJ04A03 JOB STEP: MJ04A03 PROC STEP: S010 PROGRAM NAME: MJ04A020

ORIGINATING RATE-CENTER: 181\*\*\*\*\*  
 TERMINATING RATE-CENTER: 050\*\*\*\*\*

STUDY PERIOD: 07/01/91 THRU 07/30/91  
 REQUEST NUMBER: 01

MESSAGES BY RATE CLASS

HR OF DAY	DAY RATE				EVENING RATE				NIGHT RATE/WEEKEND			
	BUS	RES	COIN	TOTAL	BUS	RES	COIN	TOTAL	BUS	RES	COIN	TOTAL
AM 8	266	0	0	266	0	0	0	0	22	0	0	22
9	388	0	0	388	0	0	0	0	30	0	0	30
10	426	0	0	426	0	0	0	0	35	0	0	35
11	437	0	0	437	0	0	0	0	29	0	0	29
12	314	0	0	314	0	0	0	0	23	0	0	23
PM 1	401	0	0	401	0	0	0	0	17	0	0	17
2	444	0	0	444	0	0	0	0	34	0	0	34
3	423	0	0	423	0	0	0	0	23	0	0	23
4	325	0	0	325	0	0	0	0	22	0	0	22
5	0	0	0	0	173	0	0	173	19	0	0	19
6	0	0	0	0	79	0	0	79	16	0	0	16
7	0	0	0	0	50	0	0	50	9	0	0	9
8	0	0	0	0	47	0	0	47	8	0	0	8
9	0	0	0	0	28	0	0	28	3	0	0	3
10	0	0	0	0	20	0	0	20	7	0	0	7
11	0	0	0	0	0	0	0	0	4	0	0	4
12	0	0	0	0	0	0	0	0	1	0	0	1
AM 1	0	0	0	0	0	0	0	0	3	0	0	3
2	0	0	0	0	0	0	0	0	2	0	0	2
3	0	0	0	0	0	0	0	0	7	0	0	7
4	0	0	0	0	0	0	0	0	1	0	0	1
5	0	0	0	0	0	0	0	0	1	0	0	1
6	0	0	0	0	0	0	0	0	28	0	0	28
7	0	0	0	0	0	0	0	0	53	0	0	53
TOTAL	3,424	0	0	3,424	397	0	0	397	397	0	0	397

Attachment D  
 Docket No. 910528 - TL  
 Order No. 24717  
 Page 4 of 65

FSD: MJ0 J0-2-C  
 DATE: 09/18/91  
 TIME: 15:19

EAS/OPTIONAL CALLING PLAN STUDY  
 Palatka to Crescent City(I) - BUS

FORM: 4311-3  
 RETAIN: OPT  
 AREA: JACKSONVILLE  
 PAGE: 4

CYCLE: 207 JES NUMBER: JOB07638 JOB NAME: MJ04A03 JOB STEP: MJ04A03 PROC STEP: S010 PROGRAM NAME: MJ04A020

ORIGINATING RATE-CENTER: 181\*\*\*\*\*  
 TERMINATING RATE-CENTER: 050\*\*\*\*\*

STUDY PERIOD: 07/01/91 THRU 07/30/91  
 REQUEST NUMBER: 01

MINUTES OF USAGE BY RATE CLASS

HR OF DAY	DAY RATE				EVENING RATE				NIGHT RATE/WEEKEND			
	BUS	RES	COIN	TOTAL	BUS	RES	COIN	TOTAL	BUS	RES	COIN	TOTAL
AM 8	671	0	0	671	0	0	0	0	34	0	0	34
9	1,000	0	0	1,000	0	0	0	0	66	0	0	66
10	932	0	0	932	0	0	0	0	82	0	0	82
11	1,024	0	0	1,024	0	0	0	0	56	0	0	56
12	664	0	0	664	0	0	0	0	47	0	0	47
PM 1	1,001	0	0	1,001	0	0	0	0	85	0	0	85
2	1,124	0	0	1,124	0	0	0	0	67	0	0	67
3	1,033	0	0	1,033	0	0	0	0	57	0	0	57
4	710	0	0	710	0	0	0	0	95	0	0	95
5	0	0	0	0	366	0	0	366	62	0	0	62
6	0	0	0	0	206	0	0	206	49	0	0	49
7	0	0	0	0	236	0	0	236	18	0	0	18
8	0	0	0	0	243	0	0	243	21	0	0	21
9	0	0	0	0	134	0	0	134	17	0	0	17
10	0	0	0	0	60	0	0	60	9	0	0	9
11	0	0	0	0	0	0	0	0	19	0	0	19
12	0	0	0	0	0	0	0	0	2	0	0	2
AM 1	0	0	0	0	0	0	0	0	9	0	0	9
2	0	0	0	0	0	0	0	0	2	0	0	2
3	0	0	0	0	0	0	0	0	15	0	0	15
4	0	0	0	0	0	0	0	0	4	0	0	4
5	0	0	0	0	0	0	0	0	0	0	0	0
6	0	0	0	0	0	0	0	0	35	0	0	35
7	0	0	0	0	0	0	0	0	103	0	0	103
TOTAL	8,159	0	0	8,159	1,245	0	0	1,245	954	0	0	954

Attachment D  
 Docket No. 910528 - TL  
 Order No. 24717  
 Page 5 of 65

FSD: MJ0. 00-2-C  
 DATE: 09/18/91  
 TIME: 15:19  
 CYCLE: 207 JES NUMBER: JOB07638

EAS/OPTIONAL CALLING PLAN STUDY  
 Hawthorne to Interlachen(I) - RES

JOB NAME: MJ04A03 JOB STEP: MJ04A03 PROC STEP: S010 PROGRAM NAME: MJ04A020

FORM: 4311-3  
 RETAIN: OPT  
 AREA: JACKSONVILL  
 PAGE: 3

ORIGINATING RATE-CENTER: 099\*\*\*\*\*  
 TERMINATING RATE-CENTER: 110\*\*\*\*\*

STUDY PERIOD: 07/01/91 THRU 07/30/91  
 REQUEST NUMBER: 04

MESSAGES BY RATE CLASS

HR OF DAY	DAY RATE				EVENING RATE				NIGHT RATE/WEEKEND			
	BUS	RES	COIN	TOTAL	BUS	RES	COIN	TOTAL	BUS	RES	COIN	TOTAL
AM 8	0	95	0	95	0	0	0	0	0	28	0	28
9	0	100	0	100	0	0	0	0	0	37	0	37
10	0	112	0	112	0	0	0	0	0	28	0	28
11	0	94	0	94	0	0	0	0	0	31	0	31
12	0	82	0	82	0	0	0	0	0	38	0	38
PH 1	0	90	0	90	0	0	0	0	0	35	0	35
2	0	114	0	114	0	0	0	0	0	20	0	20
3	0	111	0	111	0	0	0	0	0	27	0	27
4	0	114	0	114	0	0	0	0	0	23	0	23
5	0	0	0	0	0	162	0	162	0	27	0	27
6	0	0	0	0	0	142	0	142	0	34	0	34
7	0	0	0	0	0	135	0	135	0	42	0	42
8	0	0	0	0	0	143	0	143	0	45	0	45
9	0	0	0	0	0	121	0	121	0	21	0	21
10	0	0	0	0	0	49	0	49	0	11	0	11
11	0	0	0	0	0	0	0	0	0	28	0	28
AM 12	0	0	0	0	0	0	0	0	0	11	0	11
1	0	0	0	0	0	0	0	0	0	5	0	5
2	0	0	0	0	0	0	0	0	0	3	0	3
3	0	0	0	0	0	0	0	0	0	1	0	1
4	0	0	0	0	0	0	0	0	0	1	0	1
5	0	0	0	0	0	0	0	0	0	1	0	1
6	0	0	0	0	0	0	0	0	0	23	0	23
7	0	0	0	0	0	0	0	0	0	60	0	60
TOTAL	0	912	0	912	0	752	0	752	0	580	0	580

Attachment D  
 Docket No. 910528 - TL  
 Order No. 24717  
 Page 6 of 65

FSD: MJ0- J0-2-C  
 DATE: 09/18/91  
 TIME: 15:19  
 CYCLE: 207 JES NUMBER: JOB07638

EAS/OPTIONAL CALLING PLAN STUDY  
 Hawthorne to Interlachen(I) - RES

FORM: 4311-3  
 RETAIN: OPT  
 AREA: JACKSONVILL  
 PAGE: 4  
 PROGRAM NAME: MJ04A020

ORIGINATING RATE-CENTER: 099\*\*\*\*\*  
 TERMINATING RATE-CENTER: 110\*\*\*\*\*

STUDY PERIOD: 07/01/91 THRU 07/30/91  
 REQUEST NUMBER: 04

MINUTES OF USAGE BY RATE CLASS

HR OF DAY	DAY RATE				EVENING RATE				NIGHT RATE/WEEKEND			
	BUS	RES	COIN	TOTAL	BUS	RES	COIN	TOTAL	BUS	RES	COIN	TOTAL
AM 8	0	213	0	213	0	0	0	0	0	183	0	183
9	0	316	0	316	0	0	0	0	0	84	0	84
10	0	445	0	445	0	0	0	0	0	81	0	81
11	0	306	0	306	0	0	0	0	0	110	0	110
12	0	303	0	303	0	0	0	0	0	172	0	172
PM 1	0	317	0	317	0	0	0	0	0	85	0	85
2	0	364	0	364	0	0	0	0	0	84	0	84
3	0	355	0	355	0	0	0	0	0	108	0	108
4	0	369	0	369	0	0	0	0	0	42	0	42
5	0	0	0	0	0	572	0	572	0	157	0	157
6	0	0	0	0	0	465	0	465	0	130	0	130
7	0	0	0	0	0	865	0	865	0	211	0	211
8	0	0	0	0	0	699	0	699	0	178	0	178
9	0	0	0	0	0	803	0	803	0	120	0	120
10	0	0	0	0	0	555	0	555	0	56	0	56
11	0	0	0	0	0	0	0	0	0	136	0	136
12	0	0	0	0	0	0	0	0	0	130	0	130
AM 1	0	0	0	0	0	0	0	0	0	6	0	6
2	0	0	0	0	0	0	0	0	0	127	0	127
3	0	0	0	0	0	0	0	0	0	1	0	1
4	0	0	0	0	0	0	0	0	0	1	0	1
5	0	0	0	0	0	0	0	0	0	0	0	0
6	0	0	0	0	0	0	0	0	0	69	0	69
7	0	0	0	0	0	0	0	0	0	249	0	249
TOTAL	0	2,988	0	2,988	0	3,959	0	3,959	0	2,520	0	2,520

Attachment D  
 Docket No. 910528 - TL  
 Order No. 24717  
 Page 7 of 65

FSD: MJ6. 00-2-C  
 DATE: 09/18/91  
 TIME: 15:19  
 CYCLE: 207

EAS/OPTIONAL CALLING PLAN STUDY  
 Hawthorne to Interlachen(I) - BUS

JES NUMBER: JOB07638 JOB NAME: MJ04A03 JOB STEP: MJ04A03 PROC STEP: S010 PROGRAM NAME: MJ04A020

FORM: 4311-3  
 RETAIN: OPT  
 AREA: JACKSONVILL  
 PAGE: 3

ORIGINATING RATE-CENTER: 099\*\*\*\*\*  
 TERMINATING RATE-CENTER: 110\*\*\*\*\*

STUDY PERIOD: 07/01/91 THRU 07/30/91  
 REQUEST NUMBER: 03

MESSAGES BY RATE CLASS

HR OF DAY	DAY RATE				EVENING RATE				NIGHT RATE/WEEKEND			
	BUS	RES	COIN	TOTAL	BUS	RES	COIN	TOTAL	BUS	RES	COIN	TOTAL
AM 8	16	0	0	16	0	0	0	0	4	0	0	4
9	28	0	0	28	0	0	0	0	2	0	0	2
10	31	0	0	31	0	0	0	0	3	0	0	3
11	34	0	0	34	0	0	0	0	2	0	0	2
12	23	0	0	23	0	0	0	0	6	0	0	6
PH 1	30	0	0	30	0	0	0	0	4	0	0	4
2	34	0	0	34	0	0	0	0	4	0	0	4
3	33	0	0	33	0	0	0	0	6	0	0	6
4	29	0	0	29	0	0	0	0	3	0	0	3
5	0	0	0	0	12	0	0	12	6	0	0	6
6	0	0	0	0	9	0	0	9	2	0	0	2
7	0	0	0	0	9	0	0	9	0	0	0	0
8	0	0	0	0	8	0	0	8	5	0	0	5
9	0	0	0	0	14	0	0	14	4	0	0	4
10	0	0	0	0	6	0	0	6	1	0	0	1
11	0	0	0	0	0	0	0	0	1	0	0	1
AM 12	0	0	0	0	0	0	0	0	1	0	0	1
1	0	0	0	0	0	0	0	0	0	0	0	0
2	0	0	0	0	0	0	0	0	0	0	0	0
3	0	0	0	0	0	0	0	0	0	0	0	0
4	0	0	0	0	0	0	0	0	1	0	0	1
5	0	0	0	0	0	0	0	0	0	0	0	0
6	0	0	0	0	0	0	0	0	0	0	0	0
7	0	0	0	0	0	0	0	0	5	0	0	5
TOTAL	258	0	0	258	58	0	0	58	61	0	0	61

Attachment D  
 Docket No. 910528 - TL  
 Order No. 24717  
 Page 8 of 65



FSD: MJ0. J0-2-C  
 DATE: 09/18/91  
 TIME: 15:19  
 CYCLE: 207 JES NUMBER: JOB07638

EAS/OPTIONAL CALLING PLAN STUDY  
 Hawthorne to Interlachen(I) - BUS  
 JOB NAME: MJ04A03 JOB STEP: MJ04A03 PPOC STEP: S010

PROGRAM NAME: MJ04A020

FORM: 4311-3  
 RETAIN: OPT  
 AREA: JACKSONVILL  
 PAGE: 4

ORIGINATING RATE-CENTER: 099\*\*\*\*\*  
 TERMINATING RATE-CENTER: 110\*\*\*\*\*

STUDY PERIOD: 07/01/91 THRU 07/30/91  
 REQUEST NUMBER: 03

MINUTES OF USAGE BY RATE CLASS

HR OF DAY	DAY RATE				EVENING RATE				NIGHT RATE/WEEKEND			
	BUS	RES	COIN	TOTAL	BUS	RES	COIN	TOTAL	BUS	RES	COIN	TOTAL
AM 8	24	0	0	24	0	0	0	0	76	0	0	76
9	30	0	0	30	0	0	0	0	2	0	0	2
10	41	0	0	41	0	0	0	0	12	0	0	12
11	57	0	0	57	0	0	0	0	1	0	0	1
12	47	0	0	47	0	0	0	0	5	0	0	5
PM 1	83	0	0	83	0	0	0	0	8	0	0	8
2	66	0	0	66	0	0	0	0	6	0	0	6
3	75	0	0	75	0	0	0	0	6	0	0	6
4	70	0	0	70	0	0	0	0	1	0	0	1
5	0	0	0	0	24	0	0	24	22	0	0	22
6	0	0	0	0	46	0	0	46	7	0	0	7
7	0	0	0	0	16	0	0	16	0	0	0	0
8	0	0	0	0	12	0	0	12	10	0	0	10
9	0	0	0	0	27	0	0	27	15	0	0	15
10	0	0	0	0	18	0	0	18	1	0	0	1
11	0	0	0	0	0	0	0	0	3	0	0	3
12	0	0	0	0	0	0	0	0	2	0	0	2
AM 1	0	0	0	0	0	0	0	0	0	0	0	0
2	0	0	0	0	0	0	0	0	0	0	0	0
3	0	0	0	0	0	0	0	0	0	0	0	0
4	0	0	0	0	0	0	0	0	6	0	0	6
5	0	0	0	0	0	0	0	0	0	0	0	0
6	0	0	0	0	0	0	0	0	14	0	0	14
7	0	0	0	0	0	0	0	0	7	0	0	7
TOTAL	493	0	0	493	143	0	0	143	203	0	0	203

Attachment D  
 Docket No. 910528 - TL  
 Order No. 24717  
 Page 9 of 65

FSD: MJ0. J0-2-C  
 DATE: 09/18/91  
 TIME: 15:19  
 CYCLE: 207

EAS/OPTICNAL CALLING PLAN STUDY  
 Pomona Park to Crescent City(I) - RES

FORM: 4311-3  
 RETAIN: OPT  
 AREA: JACKSNVILL  
 PAGE: 3

JES NUMBER: JOB07638 JOB NAME: MJ04A03 JOB STEP: MJ04A03 PROC STEP: S010 PROGRAM NAME: MJ04A020

ORIGINATING RATE-CENTER: 194\*\*\*\*\*  
 TERMINATING RATE-CENTER: 050\*\*\*\*\*

STUDY PERIOD: 07/01/91 THRU 07/30/91  
 REQUEST NUMBER: 06

MESSAGES BY RATE CLASS

HR OF DAY	DAY RATE				EVENING RATE				NIGHT RATE/WEEKEND			
	BUS	RES	COIN	TOTAL	BUS	RES	COIN	TOTAL	BUS	RES	COIN	TOTAL
AM 8	0	0	0	0	0	0	0	0	0	0	0	0
9	0	1	0	1	0	0	0	0	0	0	0	0
10	0	0	0	0	0	0	0	0	0	0	0	0
11	0	0	0	0	0	0	0	0	0	0	0	0
12	0	0	0	0	0	0	0	0	0	0	0	0
PM 1	0	0	0	0	0	0	0	0	0	0	0	0
2	0	0	0	0	0	0	0	0	0	0	0	0
3	0	0	0	0	0	0	0	0	0	0	0	0
4	0	1	0	1	0	0	0	0	0	0	0	0
5	0	0	0	0	0	0	0	0	0	0	0	0
6	0	0	0	0	0	0	0	0	0	0	0	0
7	0	0	0	0	0	1	0	1	0	0	0	0
8	0	0	0	0	0	0	0	0	0	0	0	0
9	0	0	0	0	0	0	0	0	0	0	0	0
10	0	0	0	0	0	0	0	0	0	0	0	0
11	0	0	0	0	0	0	0	0	0	0	0	0
12	0	0	0	0	0	0	0	0	0	0	0	0
AM 1	0	0	0	0	0	0	0	0	0	0	0	0
2	0	0	0	0	0	0	0	0	0	0	0	0
3	0	0	0	0	0	0	0	0	0	0	0	0
4	0	0	0	0	0	0	0	0	0	0	0	0
5	0	0	0	0	0	0	0	0	0	0	0	0
6	0	0	0	0	0	0	0	0	0	0	0	0
7	0	0	0	0	0	0	0	0	0	0	0	0
TOTAL	0	2	0	2	0	1	0	1	0	0	0	0

FSD: MJ0-00-2-C  
 DATE: 09/18/91  
 TIME: 15:19  
 CYCLE: 207

EAS/OPTIONAL CALLING PLAN STUDY  
 Pomona Park to Crescent City(I) - RES

FORM: 4311-3  
 RETAIN: OPT  
 AREA: JACKSONVILL  
 PAGE: 4

JES NUMBER: JOB07638 JOB NAME: MJ04A03 JOB STEP: MJ04A03 PROC STEP: S010 PROGRAM NAME: MJ04A020

ORIGINATING RATE-CENTER: 194\*\*\*\*\* STUDY PERIOD: 07/01/91 THRU 07/30/91  
 TERMINATING RATE-CENTER: 050\*\*\*\*\* REQUEST NUMBER: 06

MINUTES OF USAGE BY RATE CLASS

HR OF DAY	DAY RATE				EVENING RATE				NIGHT RATE/WEEKEND			
	BUS	RES	COIN	TOTAL	BUS	RES	COIN	TOTAL	BUS	RES	COIN	TOTAL
AM 8	0	0	0	0	0	0	0	0	0	0	0	0
9	0	36	0	36	0	0	0	0	0	0	0	0
10	0	0	0	0	0	0	0	0	0	0	0	0
11	0	0	0	0	0	0	0	0	0	0	0	0
12	0	0	0	0	0	0	0	0	0	0	0	0
PM 1	0	0	0	0	0	0	0	0	0	0	0	0
2	0	0	0	0	0	0	0	0	0	0	0	0
3	0	0	0	0	0	0	0	0	0	0	0	0
4	0	22	0	22	0	0	0	0	0	0	0	0
5	0	0	0	0	0	0	0	0	0	0	0	0
6	0	0	0	0	0	0	0	0	0	0	0	0
7	0	0	0	0	0	25	0	25	0	0	0	0
8	0	0	0	0	0	0	0	0	0	0	0	0
9	0	0	0	0	0	0	0	0	0	0	0	0
10	0	0	0	0	0	0	0	0	0	0	0	0
11	0	0	0	0	0	0	0	0	0	0	0	0
12	0	0	0	0	0	0	0	0	0	0	0	0
AM 1	0	0	0	0	0	0	0	0	0	0	0	0
2	0	0	0	0	0	0	0	0	0	0	0	0
3	0	0	0	0	0	0	0	0	0	0	0	0
4	0	0	0	0	0	0	0	0	0	0	0	0
5	0	0	0	0	0	0	0	0	0	0	0	0
6	0	0	0	0	0	0	0	0	0	0	0	0
7	0	0	0	0	0	0	0	0	0	0	0	0
TOTAL	0	58	0	58	0	25	0	25	0	0	0	0

Attachment D  
 Docket No. 91052 - TL  
 Order No. 2471  
 Page 11 of 65

FSD: MJ6 J0-2-C  
DATE: 09/18/91  
TIME: 15:19  
CYCLE: 207

EAS/OPTIONAL CALLING PLAN STUDY  
Pomona Park to Crescent City)I) - BUS

FORM: 4311-1  
RETAIN: OPT  
AREA: JACKSONVILL  
PAGE: 4

JES NUMBER: JOB07638 JOB NAME: MJ04A03 JOB STEP: MJ04A03 PROC STEP: S010 PROGRAM NAME: MJ04A020

ORIGINATING RATE-CENTER: 181\*\*\*\*\*  
TERMINATING RATE-CENTER: 174\*\*\*\*\*  
STUDY PERIOD: 07/01/91 THRU 07/30/91  
REQUEST NUMBER: 45

THERE ARE NO MESSAGES FITTING THIS SELECTION CRITERIA

Attachment D  
Docket No. 910528 - TL  
Order No. 24717  
Page 12 of 65

FSD: MJ0 J0-2-C  
DATE: 09/18/91  
TIME: 15:19  
CYCLE: 207 JES NUMBER: JOB07638

EAS/OPTIONAL CALLING PLAN STUDY

Pomona Park to Crescent City(I) - BUS

FORM: 4311-1  
RETAIN: OPT  
AREA: JACKSONVILL  
PAGE: 4

JOB NAME: MJ04A03 JOB STEP: MJ04A03 PROC STEP: S010 PROGRAM NAME: MJ04A020

ORIGINATING RATE-CENTER: 181\*\*\*\*\*  
TERMINATING RATE-CENTER: 174\*\*\*\*\*

STUDY PERIOD: 07/01/91 THRU 07/30/91  
REQUEST NUMBER: 46

THERE ARE NO MESSAGES FITTING THIS SELECTION CRITERIA

Attachment D  
Docket No. 910528 - TL  
Order No. 24717  
Page 13 of 65

FSD: MJ0- J0-2-C  
 DATE: 09/18/91  
 TIME: 15:19  
 CYCLE: 207 JES NUMBER: JOB07638 JOB NAME: MJ04A03 JOB STEP: MJ04A03 PROC STEP: S010

EAS/OPTIONAL CALLING PLAN STUDY  
 Welaka to Crescent City(I) - RES

FORM: 4311-3  
 RETAIN: OPT  
 AREA: JACKSONVILL  
 PAGE: 3

PROGRAM NAME: MJ04A020

ORIGINATING RATE-CENTER: 237\*\*\*\*\*  
 TERMINATING RATE-CENTER: 050\*\*\*\*\*

STUDY PERIOD: 07/01/91 THRU 07/30/91  
 REQUEST NUMBER: 08

MESSAGES BY RATE CLASS

HR OF DAY	DAY RATE				EVENING RATE				NIGHT RATE/WEEKEND			
	BUS	RES	COIN	TOTAL	BUS	RES	COIN	TOTAL	BUS	RES	COIN	TOTAL
AM 8	0	1	0	1	0	0	0	0	0	0	0	0
9	0	1	0	1	0	0	0	0	0	0	0	0
10	0	0	0	0	0	0	0	0	0	0	0	0
11	0	0	0	0	0	0	0	0	0	0	0	0
12	0	0	0	0	0	0	0	0	0	0	0	0
PM 1	0	0	0	0	0	0	0	0	0	0	0	0
2	0	0	0	0	0	0	0	0	0	0	0	0
3	0	0	0	0	0	0	0	0	0	0	0	0
4	0	0	0	0	0	0	0	0	0	0	0	0
5	0	0	0	0	0	0	0	0	0	0	0	0
6	0	0	0	0	0	1	0	1	0	0	0	0
7	0	0	0	0	0	0	0	0	0	0	0	0
8	0	0	0	0	0	0	0	0	0	0	0	0
9	0	0	0	0	0	0	0	0	0	0	0	0
10	0	0	0	0	0	0	0	0	0	0	0	0
11	0	0	0	0	0	0	0	0	0	0	0	0
AM 12	0	0	0	0	0	0	0	0	0	0	0	0
1	0	0	0	0	0	0	0	0	0	0	0	0
2	0	0	0	0	0	0	0	0	0	0	0	0
3	0	0	0	0	0	0	0	0	0	0	0	0
4	0	0	0	0	0	0	0	0	0	0	0	0
5	0	0	0	0	0	0	0	0	0	0	0	0
6	0	0	0	0	0	0	0	0	0	0	0	0
7	0	0	0	0	0	0	0	0	0	0	0	0
TOTAL	0	2	0	2	0	1	0	1	0	0	0	0

FSD: MJ0. 00-2-C  
 DATE: 09/18/91  
 TIME: 15:19  
 CYCLE: 207 JES NUMBER: JOB07638 JOB NAME: MJ04A03 JOB STEP: MJ04A03 PROC STEP: S010

EAS/OPTIONAL CALLING PLAN STUDY  
 Welaka to Crescent City(I) - RES

FORM: 4311-3  
 RETAIN: OPT  
 AREA: JACKSONVILL  
 PAGE: 4  
 PROGRAM NAME: MJ04A020

ORIGINATING RATE-CENTER: 237\*\*\*\*\*  
 TERMINATING RATE-CENTER: 050\*\*\*\*\*

STUDY PERIOD: 07/01/91 THRU 07/30/91  
 REQUEST NUMBER: 08

MINUTES OF USAGE BY RATE CLASS

HR OF DAY	DAY RATE				EVENING RATE				NIGHT RATE/WEEKEND			
	BUS	RES	COIN	TOTAL	BUS	RES	COIN	TOTAL	BUS	RES	COIN	TOTAL
AM 8	0	3	0	3	0	0	0	0	0	0	0	0
9	0	12	0	12	0	0	0	0	0	0	0	0
10	0	0	0	0	0	0	0	0	0	0	0	0
11	0	0	0	0	0	0	0	0	0	0	0	0
12	0	0	0	0	0	0	0	0	0	0	0	0
PH 1	0	0	0	0	0	0	0	0	0	0	0	0
2	0	0	0	0	0	0	0	0	0	0	0	0
3	0	0	0	0	0	0	0	0	0	0	0	0
4	0	0	0	0	0	0	0	0	0	0	0	0
5	0	0	0	0	0	0	0	0	0	0	0	0
6	0	0	0	0	0	1	0	1	0	0	0	0
7	0	0	0	0	0	0	0	0	0	0	0	0
8	0	0	0	0	0	0	0	0	0	0	0	0
9	0	0	0	0	0	0	0	0	0	0	0	0
10	0	0	0	0	0	0	0	0	0	0	0	0
11	0	0	0	0	0	0	0	0	0	0	0	0
12	0	0	0	0	0	0	0	0	0	0	0	0
AM 1	0	0	0	0	0	0	0	0	0	0	0	0
2	0	0	0	0	0	0	0	0	0	0	0	0
3	0	0	0	0	0	0	0	0	0	0	0	0
4	0	0	0	0	0	0	0	0	0	0	0	0
5	0	0	0	0	0	0	0	0	0	0	0	0
6	0	0	0	0	0	0	0	0	0	0	0	0
7	0	0	0	0	0	0	0	0	0	0	0	0
TOTAL	0	15	0	15	0	1	0	1	0	0	0	0

Attachment D  
 Docket No. 910528 - TL  
 Order No. 24717  
 Page 15 of 65

FSD: MJ0 J0-2-C  
 DATE: 09/18/91  
 TIME: 15:19  
 CYCLE: 207 JES NUMBER: JOB07638

EAS/OPTIONAL CALLING PLAN STUDY  
 Welaka to Crescent City(I) - BUS  
 JOB NAME: MJ04A03 JOB STEP: MJ04A03 PROC STEP: S010

PROGRAM NAME: MJ04A020  
 FORM: 4311-3  
 RETAIN: OPT  
 AREA: JACKSONVILL  
 PAGE: 3

ORIGINATING RATE-CENTER: 237\*\*\*\*\*  
 TERMINATING RATE-CENTER: 050\*\*\*\*\*

STUDY PERIOD: 07/01/91 THRU 07/30/91  
 REQUEST NUMBER: 07

MESSAGES BY RATE CLASS

HR OF DAY	DAY RATE				EVENING RATE				NIGHT RATE/WEEKEND			
	BUS	RES	COIN	TOTAL	BUS	RES	COIN	TOTAL	BUS	RES	COIN	TOTAL
AM 8	1	0	0	1	0	0	0	0	0	0	0	0
9	0	0	0	0	0	0	0	0	0	0	0	0
10	0	0	0	0	0	0	0	0	0	0	0	0
11	0	0	0	0	0	0	0	0	0	0	0	0
12	0	0	0	0	0	0	0	0	0	0	0	0
PM 1	0	0	0	0	0	0	0	0	0	0	0	0
2	0	0	0	0	0	0	0	0	0	0	0	0
3	0	0	0	0	0	0	0	0	0	0	0	0
4	0	0	0	0	0	0	0	0	0	0	0	0
5	0	0	0	0	0	0	0	0	0	0	0	0
6	0	0	0	0	0	0	0	0	0	0	0	0
7	0	0	0	0	0	0	0	0	0	0	0	0
8	0	0	0	0	0	0	0	0	0	0	0	0
9	0	0	0	0	0	0	0	0	0	0	0	0
10	0	0	0	0	0	0	0	0	0	0	0	0
11	0	0	0	0	0	0	0	0	0	0	0	0
12	0	0	0	0	0	0	0	0	1	0	0	1
AM 1	0	0	0	0	0	0	0	0	0	0	0	0
2	0	0	0	0	0	0	0	0	0	0	0	0
3	0	0	0	0	0	0	0	0	0	0	0	0
4	0	0	0	0	0	0	0	0	0	0	0	0
5	0	0	0	0	0	0	0	0	0	0	0	0
6	0	0	0	0	0	0	0	0	0	0	0	0
7	0	0	0	0	0	0	0	0	0	0	0	0
TOTAL	1	0	0	1	0	0	0	0	1	0	0	1

Attachment D  
 Docket No. 910528 - TL  
 Order No. 24717  
 Page 16 of 65



FSD: MJ0. 00-2-C  
 DATE: 09/18/91  
 TIME: 15:19  
 CYCLE: 207

EAS/OPTIONAL CALLING PLAN STUDY  
 Welaka to Crescent City(I) - BUS

FORM: 4311-3  
 RETAIN: OPT  
 AREA: JACKSONVILL  
 PAGE: 4

JES NUMBER: JOB07638 JOB NAME: MJ04A03 JOB STEP: MJ04A03 PROC STEP: S010 PROGRAM NAME: MJ04A020

ORIGINATING RATE-CENTER: 237\*\*\*\*\*  
 TERMINATING RATE-CENTER: 050\*\*\*\*\*

STUDY PERIOD: 07/01/91 THRU 07/30/91  
 REQUEST NUMBER: 07

MINUTES OF USAGE BY RATE CLASS

HR OF DAY	DAY RATE				EVENING RATE				NIGHT RATE/WEEKEND			
	BUS	RES	COIN	TOTAL	BUS	RES	COIN	TOTAL	BUS	RES	COIN	TOTAL
AM 8	2	0	0	2	0	0	0	0	0	0	0	0
9	0	0	0	0	0	0	0	0	0	0	0	0
10	0	0	0	0	0	0	0	0	0	0	0	0
11	0	0	0	0	0	0	0	0	0	0	0	0
12	0	0	0	0	0	0	0	0	0	0	0	0
PM 1	0	0	0	0	0	0	0	0	0	0	0	0
2	0	0	0	0	0	0	0	0	0	0	0	0
3	0	0	0	0	0	0	0	0	0	0	0	0
4	0	0	0	0	0	0	0	0	0	0	0	0
5	0	0	0	0	0	0	0	0	0	0	0	0
6	0	0	0	0	0	0	0	0	0	0	0	0
7	0	0	0	0	0	0	0	0	0	0	0	0
8	0	0	0	0	0	0	0	0	0	0	0	0
9	0	0	0	0	0	0	0	0	0	0	0	0
10	0	0	0	0	0	0	0	0	0	0	0	0
11	0	0	0	0	0	0	0	0	0	0	0	0
12	0	0	0	0	0	0	0	0	6	0	0	6
AM 1	0	0	0	0	0	0	0	0	0	0	0	0
2	0	0	0	0	0	0	0	0	0	0	0	0
3	0	0	0	0	0	0	0	0	0	0	0	0
4	0	0	0	0	0	0	0	0	0	0	0	0
5	0	0	0	0	0	0	0	0	0	0	0	0
6	0	0	0	0	0	0	0	0	0	0	0	0
7	0	0	0	0	0	0	0	0	0	0	0	0
TOTAL	2	0	0	2	0	0	0	0	6	0	0	6

Attachment D  
 Docket No. 910528 - TL  
 Order No. 24717  
 Page 17 of 65

FSD: MJ0. J0-2-C  
 DATE: 09/18/91  
 TIME: 15:19  
 CYCLE: 207 JES NUMBER: JOB07638 JOB NAME: MJ04A03 JOB STEP: MJ04A03 PROC STEP: S010

EAS/OPTIONAL CALLING PLAN STUDY  
 Palatka to Hawthorne - RES

PROGRAM NAME: MJ04A020

FORM: 4311-3  
 RETAIN: OPT  
 AREA: JACKSONVILL  
 PAGE: 3

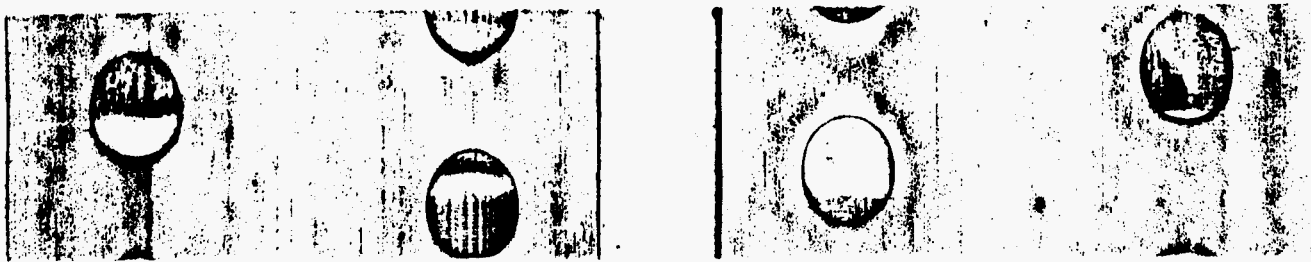
ORIGINATING RATE-CENTER: 181\*\*\*\*\*  
 TERMINATING RATE-CENTER: 099\*\*\*\*\*

STUDY PERIOD: 07/01/91 THRU 07/30/91  
 REQUEST NUMBER: 16

MESSAGES BY RATE CLASS

HR OF DAY	DAY RATE			EVENING RATE			NIGHT RATE/WEEKEND				
	BUS	RES	COIN	BUS	RES	COIN	TOTAL	BUS	RES	COIN	TOTAL
8 AM											
9											
10											
11											
12											
1 PM											
2											
3											
4											
5											
6											
7											
8											
9											
10											
11											
12											
1 PM											
2											
3											
4											
5											
6											
7											
25 TOTAL											

Attachment D  
 Docket No. 910528 - TL  
 Order No. 24717  
 Page 18 of 65



FSD: MJG. 00-2-C  
DATE: 09/18/91  
TIME: 15:19  
CYCLE: 207 JES NUMBER: JOB07638 JOB NAME: MJ04A03 JOB STEP: MJ04A03 PROC STEP: S010

EAS/OPTIONAL CALLING PLAN STUDY  
Palatka to Hawthorne - RES

FORM: 4311-3  
RETAIN: OPT  
AREA: JACKSONVILL  
PAGE: 4

PROGRAM NAME: MJ04A020

ORIGINATING RATE-CENTER: 181\*\*\*\*\*  
TERMINATING RATE-CENTER: 099\*\*\*\*\*

STUDY PERIOD: 07/01/91 THRU 07/30/91  
REQUEST NUMBER: 16

MINUTES OF USAGE BY RATE CLASS

HR OF DAY	DAY RATE				EVENING RATE				NIGHT RATE/WEEKEND			
	BUS	RES	COIN	TOTAL	BUS	RES	COIN	TOTAL	BUS	RES	COIN	TOTAL
AM 8												
9												
10												
11												
12												
PM 1												
2												
3												
4												
5												
6												
7												
8												
9												
10												
11												
12												
1												
2												
3												
4												
5												
6												
7												
25 TOTAL												

Attachment D  
Docket No. 910528 - TL  
Order No. 24717  
Page 19 of 65

FSD: MJ0. J0-2-C  
 DATE: 09/18/91  
 TIME: 15:19  
 CYCLE: 207

EAS/OPTIONAL CALLING PLAN STUDY  
 Palatka to Hawthorne - BUS

FORM: 4311-3  
 RETAIN: OPT  
 AREA: JACKSONVILL  
 PAGE: 3

JES NUMBER: JOB07638 JOB NAME: MJ04A03 JOB STEP: MJ04A03 PROC STEP: S010

PROGRAM NAME: MJ04A020

ORIGINATING RATE-CENTER: 181\*\*\*\*\*  
 TERMINATING RATE-CENTER: 099\*\*\*\*\*

STUDY PERIOD: 07/01/91 THRU 07/30/91  
 REQUEST NUMBER: 15

MESSAGES BY RATE CLASS

HR OF DAY	DAY RATE				EVENING RATE			NIGHT RATE/WEEKEND				
	BUS	RES	COIN	TOTAL	BUS	RES	COIN	TOTAL	BUS	RES	COIN	TOTAL
AM 8												
9												
10												
11												
PH 12												
1												
2												
3												
4												
5												
6												
7												
8												
9												
10												
11												
AM 12												
1												
2												
3												
4												
5												
6												
7												
25 TOTAL												

1-2:45  
 3-5:15  
 10-11:25  
 11-12:15  
 1-2:15  
 3-4:15  
 5-6:15  
 7-8:15  
 9-10:15  
 11-12:15  
 1-2:15  
 3-4:15  
 5-6:15  
 7-8:15

Attachment D  
 Docket No. 910528 - TL  
 Order No. 24717  
 Page 20 of 65



FSD: MJ0. J0-2-C  
 DATE: 09/18/91  
 TIME: 15:19  
 CYCLE: 207

EAS/OPTIONAL CALLING PLAN STUDY  
 Palatka to Hawthorne - BUS

FORM: 4311-3  
 RETAIN: OPT  
 AREA: JACKSONVILL  
 PAGE: 4

JES NUMBER: JOB07638 JOB NAME: MJ04A03 JOB STEP: MJ04A03 PROC STEP: S010 PROGRAM NAME: MJ04A020

ORIGINATING RATE-CENTER: 181\*\*\*\*\*  
 TERMINATING RATE-CENTER: 099\*\*\*\*\*

STUDY PERIOD: 07/01/91 THRU 07/30/91  
 REQUEST NUMBER: 15

MINUTES OF USAGE BY RATE CLASS

HR OF DAY	DAY RATE			EVENING RATE			NIGHT RATE/WEEKEND					
	BUS	RES	COIN	TOTAL	BUS	RES	COIN	TOTAL	BUS	RES	COIN	TOTAL
AM 8												
9												
10												
11												
12												
PH 1												
2												
3												
4												
5												
6												
7												
8												
9												
10												
11												
12												
1												
2												
3												
4												
5												
6												
7												
25 TOTAL												

Attachment D  
 Docket No. 910528 - TL  
 Order No. 24717  
 Page 21 of 65



FSD: MJ0-00-2-C  
DATE: 09/18/91  
TIME: 15:19  
CYCLE: 267

EAS/OPTIONAL CALLING PLAN STUDY  
Hawthorne to Palatka - RES

FORM: 4311-3  
RETAIN: OPT  
AREA: JACKSONVILL  
PAGE: 4

JES NUMBER: JOB07638 JOB NAME: MJ04A03 JOB STEP: MJ04A03 PROC STEP: S010 PROGRAM NAME: MJ04A020

ORIGINATING RATE-CENTER: 099\*\*\*\*\*  
TERMINATING RATE-CENTER: 181\*\*\*\*\*

STUDY PERIOD: 07/01/91 THRU 07/30/91  
REQUEST NUMBER: 24

MINUTES OF USAGE BY RATE CLASS

HR OF DAY	DAY RATE				EVENING RATE				NIGHT RATE/WEEKEND			
	BUS	RES	COIN	TOTAL	BUS	RES	COIN	TOTAL	BUS	RES	COIN	TOTAL
1 AM												
2 AM												
3 AM												
4 AM												
5 AM												
6 AM												
7 AM												
8 AM												
9 AM												
10 AM												
11 AM												
12 PM												
1 PM												
2 PM												
3 PM												
4 PM												
5 PM												
6 PM												
7 PM												
8 PM												
9 PM												
10 PM												
11 PM												
12 AM												
1 AM												
2 AM												
3 AM												
4 AM												
5 AM												
6 AM												
7 AM												
25 TOTAL												

Attachment D  
Docket No. 910528 - TL  
Order No. 24717  
Page 23 of 65

FSD: MJ0, 00-2-C  
DATE: 09/18/91  
TIME: 15:19

EAS/OPTIONAL CALLING PLAN STUDY  
Hawthorne to Palatka - BUS

FORM: 4311-3  
RETAIN: OPT  
AREA: JACKSONVILL  
PAGE: 3

CYCLE: 207 JES NUMBER: JOB07638 JOB NAME: MJ04A03 JOB STEP: MJ04A03 PROC STEP: S010 PROGRAM NAME: MJ04A020

ORIGINATING RATE-CENTER: 099\*\*\*\*\* STUDY PERIOD: 07/01/91 THRU 07/30/91  
TERMINATING RATE-CENTER: 181\*\*\*\*\* REQUEST NUMBER: 23

MESSAGES BY RATE CLASS

HR OF DAY	DAY RATE				EVENING RATE			NIGHT RATE/WEEKEND				
	BUS	RES	COIN	TOTAL	BUS	RES	COIN	TOTAL	BUS	RES	COIN	TOTAL
AM 8												
9												
10												
11												
12												
PH 1												
2												
3												
4												
5												
6												
7												
8												
9												
10												
11												
12												
13												
14												
15												
16												
17												
18AM												
19												
20												
21												
22												
23												
24												
25 TOTAL												

Attachment D  
Docket No. 910528 - TL  
Order No. 24717  
Page 24 of 65





FSD: MJ0. 00-2-C  
DATE: 09/18/91  
TIME: 15:19  
CYCLE: 207

EAS/OPTIONAL CALLING PLAN STUDY  
Hawthorne to Palatka - BUS

PROGRAM NAME: MJ04A020

FORM: 4311-3  
RETAIN: OPT  
AREA: JACKSONVILL  
PAGE: 4

ORIGINATING RATE-CENTER: 099\*\*\*\*\*  
TERMINATING RATE-CENTER: 181\*\*\*\*\*

STUDY PERIOD: 07/01/91 THRU 07/30/91  
REQUEST NUMBER: 23

MINUTES OF USAGE BY RATE CLASS

HR OF DAY	DAY RATE			EVENING RATE			NIGHT RATE/WEEKEND			
	BUS	RES	COIN	BUS	RES	COIN	BUS	RES	COIN	TOTAL
8 AM										
9										
10										
11										
12										
1 PM										
2										
3										
4										
5										
6										
7										
8										
9										
10										
11										
12										
1 PM										
2										
3										
4										
5										
6										
7										
25 TOTAL										

Attachment D  
Docket No. 910528 - TL  
Order No. 24717  
Page 25 of 65

FSD: MJ0. J0-2-C  
DATE: 09/18/91  
TIME: 15:19  
CYCLE: 207

EAS/OPTIONAL CALLING PLAN STUDY  
Palatka to Keystone Heights - RES

FORM: 4311-3  
RETAIN: OPT  
AREA: JACKSONVILL  
PAGE: 3  
PROGRAM NAME: MJ04A020

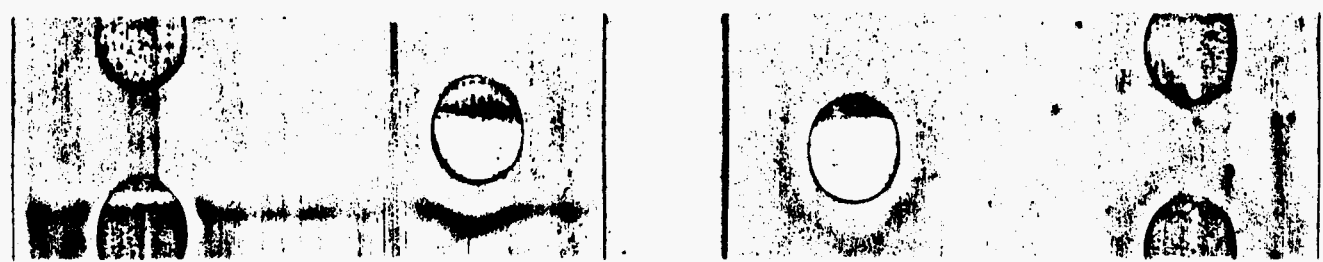
ORIGINATING RATE-CENTER: 181\*\*\*\*\*  
TERMINATING RATE-CENTER: 122\*\*\*\*\*

STUDY PERIOD: 07/01/91 THRU 07/30/91  
REQUEST NUMBER: 18

MESSAGES BY RATE CLASS

HR OF DAY	DAY RATE				EVENING RATE				NIGHT RATE/WEEKEND			
	BUS	RES	COIN	TOTAL	BUS	RES	COIN	TOTAL	BUS	RES	COIN	TOTAL
1 AM												
2 AM												
3 AM												
4 AM												
5 AM												
6 AM												
7 AM												
8 AM												
9 AM												
10 AM												
11 AM												
12 PM												
1 PM												
2 PM												
3 PM												
4 PM												
5 PM												
6 PM												
7 PM												
8 PM												
9 PM												
10 PM												
11 PM												
12 AM												
TOTAL												

Attachment D  
Docket No. 91052 - TL  
Order No. 24717  
Page 26 of 65



MINUTES OF USAGE BY RATE CLASS

HR OF DAY	DAY RATE				EVENING RATE				NIGHT RATE/WEEKEND			
	BUS	RES	COIN	TOTAL	BUS	RES	COIN	TOTAL	BUS	RES	COIN	TOTAL
M 1												
2												
3												
4												
5												
6												
7												
8												
9												
10												
11												
12												
M 1												
2												
3												
4												
5												
6												
7												
8												
9												
10												
11												
12												
M 1												
2												
3												
4												
5												
6												
7												
8												
9												
10												
11												
12												
TOTAL												

Attachment D  
 Docket No. 910528 - TL  
 Order No. 24717  
 Page 27 of 65



FSD: MJ0- J0-2-C  
DATE: 09/18/91  
TIME: 15:19  
CYCLE: 207 JES NUMBER: JOB07638 JOB NAME: MJ04A03 JOB STEP: MJ04A03 PROC STEP: S010

EAS/OPTIONAL CALLING PLAN STUDY  
Palatka to Keystone Heights - BUS

FORM: 4311-3  
RETAIN: OPT  
AREA: JACKSONVILL  
PAGE: 3  
PROGRAM NAME: MJ04A020

ORIGINATING RATE-CENTER: 181\*\*\*\*\*  
TERMINATING RATE-CENTER: 122\*\*\*\*\*  
STUDY PERIOD: 07/01/91 THRU 07/30/91  
REQUEST NUMBER: 17

MESSAGES BY RATE CLASS

HR OF DAY	DAY RATE				EVENING RATE				NIGHT RATE/WEEKEND			
	BUS	RES	COIN	TOTAL	BUS	RES	COIN	TOTAL	BUS	RES	COIN	TOTAL
AM 8												
9												
10												
11												
12												
PM 1												
2												
3												
4												
5												
6												
7												
8												
9												
10												
11												
12												
AM 1												
2												
3												
4												
5												
6												
7												
25 TOTAL												

Attachment D  
Docket No. 910528 - TL  
Order No. 24717  
Page 28 of 65

FSD: MJ0- J0-2-C  
 DATE: 09/18/91  
 TIME: 15:19  
 CYCLE: 207

EAS/OPTIONAL CALLING PLAN STUDY  
 Palatka to Keystone Heights - BUS

FORM: 4311-3  
 RETAIN: OPT  
 AREA: JACKSONVILL  
 PAGE: 4

JES NUMBER: JOB07638 JOB NAME: MJ04A03 JOB STEP: MJ04A03 PROC STEP: S010 PROGRAM NAME: MJ04A020

ORIGINATING RATE-CENTER: 181\*\*\*\*\*  
 TERMINATING RATE-CENTER: 122\*\*\*\*\*

STUDY PERIOD: 07/01/91 THRU 07/30/91  
 REQUEST NUMBER: 17

MINUTES OF USAGE BY RATE CLASS

HR OF DAY	DAY RATE				EVENING RATE				NIGHT RATE/WEEKEND			
	BUS	RES	COIN	TOTAL	BUS	RES	COIN	TOTAL	BUS	RES	COIN	TOTAL
AM 8												
9												
10												
11												
12												
PM 1												
2												
3												
4												
5												
10												
11												
12												
13												
14												
15												
11												
12												
1												
2												
3												
4												
5												
6												
7												
25 TOTAL												

Attachment D  
 Docket No. 910528 - TL  
 Order No. 24717  
 Page 29 of 65



FSD: MJO, JO-2-C  
 DATE: 09/18/91  
 TIME: 15:19

EAS/OPTIONAL CALLING PLAN STUDY  
 Keystone Heights to Palatka - RES

CYCLE: 207 JES NUMBER: JOB07638 JOB NAME: MJ04A03 JOB STEP: MJ04A03 PROC STEP: S010

PROGRAM NAME: MJ04A020

FORM: 4311-3  
 RETAIN: OPT  
 AREA: JACKSONVILLE  
 PAGE: 3

ORIGINATING RATE-CENTER: 122\*\*\*\*\*  
 TERMINATING RATE-CENTER: 181\*\*\*\*\*

STUDY PERIOD: 07/01/91 THRU 07/30/91  
 REQUEST NUMBER: 26

MESSAGES BY RATE CLASS

HR OF DAY	DAY RATE				EVENING RATE				NIGHT RATE/WEEKEND			
	BUS	RES	COIN	TOTAL	BUS	RES	COIN	TOTAL	BUS	RES	COIN	TOTAL
AM 8												
9												
10												
11												
12												
PH 1												
2												
3												
4												
5												
6												
7												
8												
9												
10												
11												
12												
1 AM 1												
2												
3												
4												
5												
6												
7												
5c TOTAL												

Attachment D  
 Docket No. 910528 - TL  
 Order No. 24717  
 Page 30 of 65

FSD: MJ6. J0-2-C  
 DATE: 09/18/91  
 TIME: 15:19  
 CYCLE: 207 JES NUMBER: JOB07638 JOB NAME: MJ04A03 JOB STEP: MJ04A03 PROC STEP: S010

EAS/OPTIONAL CALLING PLAN STUDY  
 Keystone Heights to Palatka - RES

PROGRAM NAME: MJ04A020

FORM: 4311-3  
 RETAIN: OPT  
 AREA: JACKSONVILLE  
 PAGE: 4

ORIGINATING RATE-CENTER: 122\*\*\*\*\*  
 TERMINATING RATE-CENTER: 181\*\*\*\*\*

STUDY PERIOD: 07/01/91 THRU 07/30/91  
 REQUEST NUMBER: 26

MINUTES OF USAGE BY RATE CLASS

HR OF DAY	BUS	DAY RATE			EVENING RATE			NIGHT RATE/WEEKEND				
		RES	COIN	TOTAL	BUS	RES	COIN	TOTAL	BUS	RES	COIN	TOTAL
AM 8 9 10 11 12												
PM 1 2 3 4 5 6 7 8 9 10 11 12 1 2 3 4 5 6 7												
25 TOTAL												

Attachment D  
 Docket No. 910528 - TL  
 Order No. 24717  
 Page 31 of 65



FSD: MJ0. J0-2-C  
 DATE: 09/18/91  
 TIME: 15:19

EAS/OPTIONAL CALLING PLAN STUDY  
 Keystone Heights to Palatka - BUS

FORM: 4311-3  
 RETAIN: OPT  
 AREA: JACKSONVILL  
 PAGE: 3

CYCLE: 207 JES NUMBER: JOB07638 JOB NAME: MJ04A03 JOB STEP: MJ04A03 PROC STEP: S010 PROGRAM NAME: MJ04A020

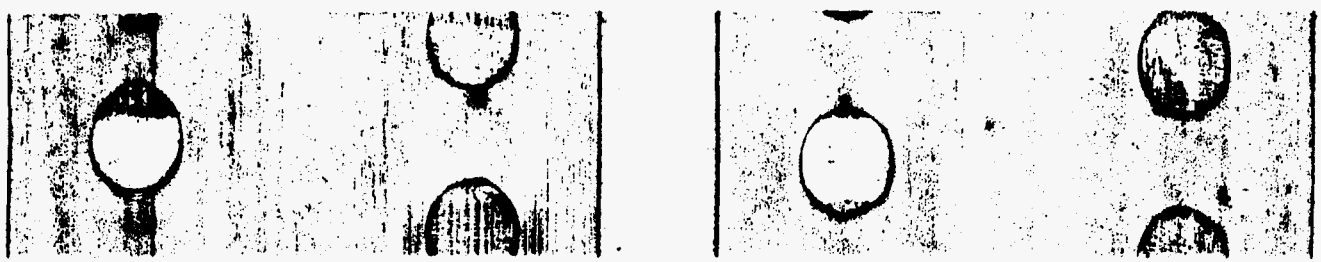
ORIGINATING RATE-CENTER: 122\*\*\*\*\* STUDY PERIOD: 07/01/91 THRU 07/30/91  
 TERMINATING RATE-CENTER: 181\*\*\*\*\* REQUEST NUMBER: 25

MESSAGES BY RATE CLASS

HR OF DAY	DAY RATE				EVENING RATE				NIGHT RATE/WEEKEND			
	BUS	RES	COIN	TOTAL	BUS	RES	COIN	TOTAL	BUS	RES	COIN	TOTAL
AM												
8												
9												
10												
11												
12												
PH												
1												
2												
3												
4												
5												
6												
7												
8												
9												
10												
11												
12												
1												
2												
3												
4												
5												
6												
7												
25	TOTAL											

Handwritten notes on the left side of the table:  
 - 25  
 - 0-2  
 - 15  
 - 16  
 - 17  
 - 18  
 - 19  
 - 20  
 - 21  
 - 22  
 - 23  
 - 24

Attachment D  
 Docket No. 910528 - TL  
 Order No. 24717  
 Page 32 of 65





FSD: MJ0. 00-2-C  
 DATE: 09/18/91  
 TIME: 15:19  
 CYCLE: 207

EAS/OPTIONAL CALLING PLAN STUDY  
 Keystone Heights to Palatka - BUS

FORM: 4311-3  
 RETAIN: OPT  
 AREA: JACKSONVILL  
 PAGE: 4

JES NUMBER: JOB07638 JOB NAME: MJ04A03 JOB STEP: MJ04A03 PROC STEP: S010 PROGRAM NAME: MJ04A020

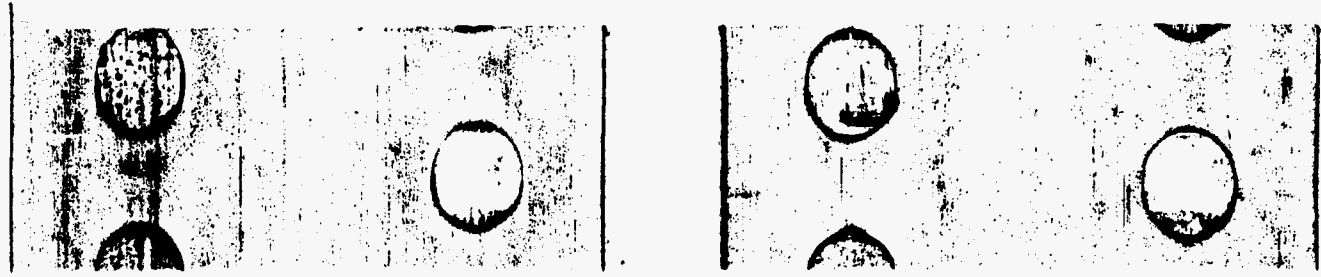
ORIGINATING RATE-CENTER: 122\*\*\*\*\*  
 TERMINATING RATE-CENTER: 181\*\*\*\*\*

STUDY PERIOD: 07/01/91 THRU 07/30/91  
 REQUEST NUMBER: 25

MINUTES OF USAGE BY RATE CLASS

HR OF DAY	DAY RATE				EVENING RATE				NIGHT RATE/WEEKEND			
	BUS	RES	COIN	TOTAL	BUS	RES	COIN	TOTAL	BUS	RES	COIN	TOTAL
8												
9												
10												
11												
12												
1												
2												
3												
4												
5												
6												
7												
8												
9												
10												
11												
12												
1												
2												
3												
4												
5												
6												
7												
25 TOTAL												

Attachment D  
 Docket No. 910528 - TL  
 Order No. 24717  
 Page 33 of 65



FSD: MJ0. Ju-2-C  
DATE: 09/18/91  
TIME: 15:19  
CYCLE: 207 JES NUMBER: JOB07638

EAS/OPTIONAL CALLING PLAN STUDY  
Palatka to Melrose(I) - RES

FORM: 4311-3  
RETAIN: OPT  
AREA: JACKSONVILL  
PAGE: 3  
PROGRAM NAME: MJ04A020

ORIGINATING RATE-CENTER: 181\*\*\*\*\*  
TERMINATING RATE-CENTER: 150\*\*\*\*\*  
STUDY PERIOD: 07/01/91 THRU 07/30/91  
REQUEST NUMBER: 20

MESSAGES BY RATE CLASS

HR OF DAY	DAY RATE				EVENING RATE				NIGHT RATE/WEEKEND			
	BUS	RES	COIN	TOTAL	BUS	RES	COIN	TOTAL	BUS	RES	COIN	TOTAL
1 AM												
2 AM												
3 AM												
4 AM												
5 AM												
6 AM												
7 AM												
8 AM												
9 AM												
10 AM												
11 AM												
12 PM												
1 PM												
2 PM												
3 PM												
4 PM												
5 PM												
6 PM												
7 PM												
8 PM												
9 PM												
10 PM												
11 PM												
12 AM												
1 AM												
2 AM												
3 AM												
4 AM												
5 AM												
6 AM												
7 AM												
8 AM												
9 AM												
10 AM												
11 AM												
12 PM												
1 PM												
2 PM												
3 PM												
4 PM												
5 PM												
6 PM												
7 PM												
8 PM												
9 PM												
10 PM												
11 PM												
12 AM												
25 TOTAL												

Attachment D  
Docket No. 910528 - TL  
Order No. 24717  
Page 34 of 65

FSD: MJ6. J0-2-C  
DATE: 09/18/91  
TIME: 15:19  
CYCLE: 207 JES NUMBER: JOB07638

EAS/OPTIONAL CALLING PLAN STUDY  
Palatka to Melrose(I) - RES  
JOB NAME: MJ04A03 JOB STEP: MJ04A03 PROC STEP: S010

FORM: 4311-3  
RETAIN: OPT  
AREA: JACKSONVILL  
PAGE: 4  
PROGRAM NAME: MJ04A020

ORIGINATING RATE-CENTER: 181\*\*\*\*\*  
TERMINATING RATE-CENTER: 150\*\*\*\*\*  
STUDY PERIOD: 07/01/91 THRU 07/30/91  
REQUEST NUMBER: 20

MINUTES OF USAGE BY RATE CLASS

HR OF DAY	DAY RATE				EVENING RATE				NIGHT RATE/WEEKEND			
	BUS	RES	COIN	TOTAL	BUS	RES	COIN	TOTAL	BUS	RES	COIN	TOTAL
1 AM												
2 AM												
3 AM												
4 AM												
5 AM												
6 AM												
7 AM												
8 AM												
9 AM												
10 AM												
11 AM												
12 PM												
1 PM												
2 PM												
3 PM												
4 PM												
5 PM												
6 PM												
7 PM												
8 PM												
9 PM												
10 PM												
11 PM												
12 AM												
1 AM												
2 AM												
3 AM												
4 AM												
5 AM												
6 AM												
7 AM												
8 AM												
9 AM												
10 AM												
11 AM												
12 PM												
1 PM												
2 PM												
3 PM												
4 PM												
5 PM												
6 PM												
7 PM												
8 PM												
9 PM												
10 PM												
11 PM												
12 AM												
25 TOTAL												

Attachment D  
Docket No. 910528 - TL  
Order No. 24717  
Page 35 of 65

FSD: MJ0- J0-2-C  
 DATE: 09/18/91  
 TIME: 15:19  
 CYCLE: 207

EAS/OPTIONAL CALLING PLAN STUDY  
 Palatka to Melrose(I) - BUS

FORM: 4311-3  
 RETAIN: OPT  
 AREA: JACKSONVILL  
 PAGE: 3

JES NUMBER: JOB07638 JOB NAME: MJ04A03 JOB STEP: MJ04A03 PROC STEP: S010 PROGRAM NAME: MJ04A020

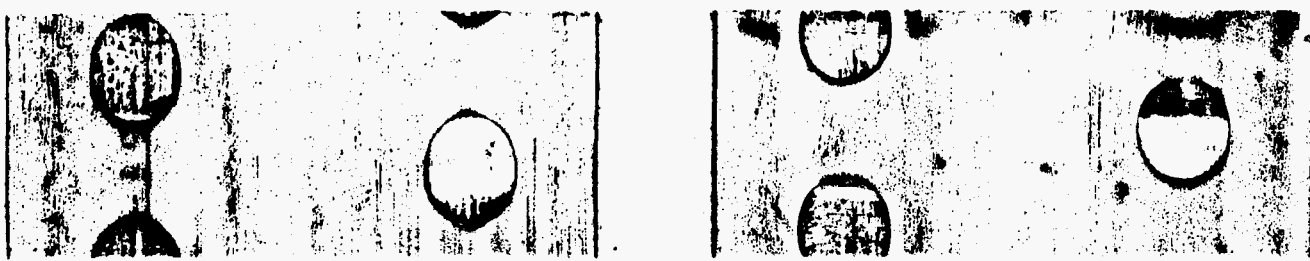
ORIGINATING RATE-CENTER: 181\*\*\*\*\* STUDY PERIOD: 07/01/91 THRU 07/30/91  
 TERMINATING RATE-CENTER: 150\*\*\*\*\* REQUEST NUMBER: 19

MESSAGES BY RATE CLASS

HR OF DAY	DAY RATE			EVENING RATE				NIGHT RATE/WEEKEND				
	BUS	RES	COIN	TOTAL	BUS	RES	COIN	TOTAL	BUS	RES	COIN	TOTAL
AM 8												
9												
10												
11												
12												
PH 1												
2												
3												
4												
5												
6												
7												
8												
9												
10												
11												
12												
1 AM												
2												
3												
4												
5												
6												
7												
25 TOTAL												

Handwritten notes on the left side of the table:  
 8-11 AM  
 12-1 PM  
 2-5 PM  
 6-7 PM  
 8-11 AM  
 12-1 PM  
 2-5 PM  
 6-7 PM  
 25 TOTAL

Attachment D  
 Docket No. 910528 - TL  
 Order No. 24717  
 Page 36 of 65



FSD: MJ0. J0-2-C  
 DATE: 09/18/91  
 TIME: 15:19  
 CYCLE: 207

EAS/OPTIONAL CALLING PLAN STUDY  
 Palatka to Melrose(I) - BUS  
 JOB NAME: MJ04A03 JOB STEP: MJ04A03 PROC STEP: S010

FORM: 4311-3  
 RETAIN: OPT  
 AREA: JACKSONVILL  
 PAGE: 4

PROGRAM NAME: MJ04A020

ORIGINATING RATE-CENTER: 181\*\*\*\*\*  
 TERMINATING RATE-CENTER: 150\*\*\*\*\*

STUDY PERIOD: 07/01/91 THRU 07/30/91  
 REQUEST NUMBER: 19

MINUTES OF USAGE BY RATE CLASS

HR OF DAY	DAY RATE				EVENING RATE				NIGHT RATE/WEEKEND			
	BUS	RES	COIN	TOTAL	BUS	RES	COIN	TOTAL	BUS	RES	COIN	TOTAL
AM 8												
9												
10												
11												
12												
PM 1												
2												
3												
4												
5												
6												
7												
8												
9												
10												
11												
12												
1												
2												
3												
4												
5												
6												
7												
25 TOTAL												

Attachment D  
 Docket No. 910528 - TL  
 Order No. 24717  
 Page 37 of 65



FSD: MJ6 J0-2-C  
 DATE: 09/18/91  
 TIME: 15:19

EAS/OPTIONAL CALLING PLAN STUDY  
 Palatka to Orange Springs(I) - RES

FORM: 4311-3  
 RETAIN: OPT  
 AREA: JACKSONVILL  
 PAGE: 3

CYCLE: 207 JES NUMBER: JOB07638 JOB NAME: MJ04A03 JOB STEP: MJ04A03 PROC STEP: S010 PROGRAM NAME: MJ04A020

ORIGINATING RATE-CENTER: 101\*\*\*\*\* STUDY PERIOD: 07/01/91 THRU 07/30/91  
 TERMINATING RATE-CENTER: 174\*\*\*\*\* REQUEST NUMBER: 22

MESSAGES BY RATE CLASS

HR OF DAY	DAY RATE				EVENING RATE				NIGHT RATE/WEEKEND			
	BUS	RES	COIN	TOTAL	BUS	RES	COIN	TOTAL	BUS	RES	COIN	TOTAL
AM 8												
9												
10												
11												
12												
PM 1												
2												
3												
4												
5												
6												
7												
10												
11												
12												
1												
2												
3												
4												
5												
6												
7												
25 TOTAL												

Attachment D  
 Docket No. 910528 - TL  
 Order No. 24717  
 Page 38 of 65



FSD: MJ0-00-2-C  
 DATE: 09/18/91  
 TIME: 15:19  
 CYCLE: 207

EAS/OPTIONAL CALLING PLAN STUDY  
 Palatka to Orange Springs(I) - RES  
 JOB NAME: MJ04A03 JOB STEP: MJ04A03 PROC STEP: S010

FORM: 4311-3  
 RETAIN: OPT  
 AREA: JACKSONVILL  
 PAGE: 4  
 PROGRAM NAME: MJ04A020

ORIGINATING RATE-CENTER: 181\*\*\*\*\*  
 TERMINATING RATE-CENTER: 174\*\*\*\*\*  
 STUDY PERIOD: 07/01/91 THRU 07/30/91  
 REQUEST NUMBER: 22

MINUTES OF USAGE BY RATE CLASS

HR OF DAY	DAY RATE				EVENING RATE				NIGHT RATE/WEEKEND			
	BUS	RES	COIN	TOTAL	BUS	RES	COIN	TOTAL	BUS	RES	COIN	TOTAL
AM 8												
10												
11												
PH 12												
1												
2												
3												
4												
5												
6												
7												
8												
9												
10												
11												
AM 12												
1												
2												
3												
4												
5												
6												
7												
8												
9												
10												
11												
AM 12												
1												
2												
3												
4												
5												
6												
7												
8												
9												
10												
11												
AM 12												
1												
2												
3												
4												
5												
6												
7												
8												
9												
10												
11												
AM 12												
1												
2												
3												
4												
5												
6												
7												
8												
9												
10												
11												
AM 12												
1												
2												
3												
4												
5												
6												
7												
8												
9												
10												
11												
AM 12												
1												
2												
3												
4												
5												
6												
7												
8												
9												
10												
11												
AM 12												
1												
2												
3												
4												
5												
6												
7												
8												
9												
10												
11												
AM 12												
1												
2												
3												
4												
5												
6												
7												
8												
9												
10												
11												
AM 12												
1												
2												
3												
4												
5												
6												
7												
8												
9												
10												
11												
AM 12												
1												
2												
3												
4												
5												
6												
7												
8												
9												
10												
11												
AM 12												
1												
2												
3												
4												
5												
6												
7												
8												
9												
10												
11												
AM 12												
1												
2												
3												
4												
5												
6												
7												
8												
9												
10												
11												
AM 12												
1												
2												
3												
4												
5												
6												
7												
8												
9												
10												
11												
AM 12												
1												
2												
3												
4												
5												
6												
7												
8												
9												





FSD: MJ0. 00-2-C  
DATE: 09/18/91  
TIME: 15:19

EAS/OPTIONAL CALLING PLAN STUDY  
Palatka to Orange Springs(I) - BUS

CYCLE: 207 JES NUMBER: JOB07638 JOB NAME: MJ04A03 JOB STEP: MJ04A03 PROC STEP: S010

PROGRAM NAME: MJ04A020

FORM: 4311-3  
RETAIN: OPT  
AREA: JACKSONVILL  
PAGE: 4

ORIGINATING RATE-CENTER: 181\*\*\*\*\*  
TERMINATING RATE-CENTER: 174\*\*\*\*\*

STUDY PERIOD: 07/01/91 THRU 07/30/91  
REQUEST NUMBER: 21

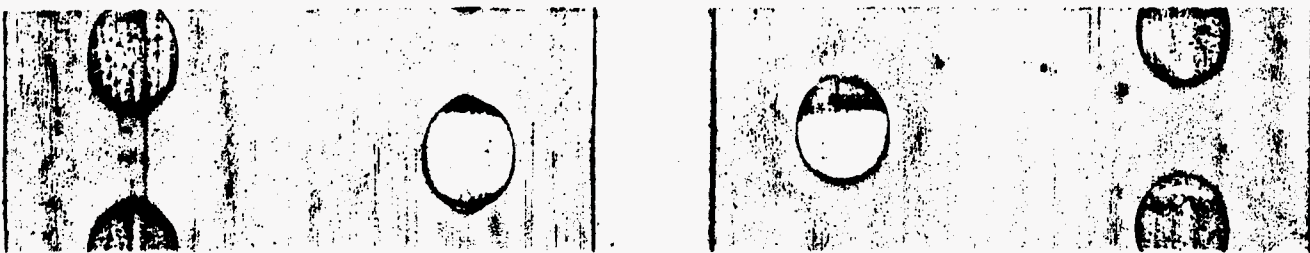
MINUTES OF USAGE BY RATE CLASS

DAY RATE EVENING RATE NIGHT RATE/WEEKEND

HR OF DAY BUS RES COIN TOTAL BUS RES COIN TOTAL BUS RES COIN TOTAL

AM 8  
9  
10  
11  
12  
PM 1  
2  
3  
4  
5  
6  
7  
8  
9  
10  
11  
12  
1  
2  
3  
4  
5  
6  
7  
25 TOTAL

Attachment D  
Docket No. 910528 - TL  
Order No. 24717  
Page 41 of 65



FSD: MJ0-00-2-C  
DATE: 09/18/91  
TIME: 15:19  
CYCLE: 207

EAS/OPTIONAL CALLING PLAN STUDY  
Palatka to Hawthorne (PCKT) - RES  
JOB NUMBER: JOB07638 JOB NAME: MJ04A03 JOB STEP: MJ04A03 PROC STEP: S010

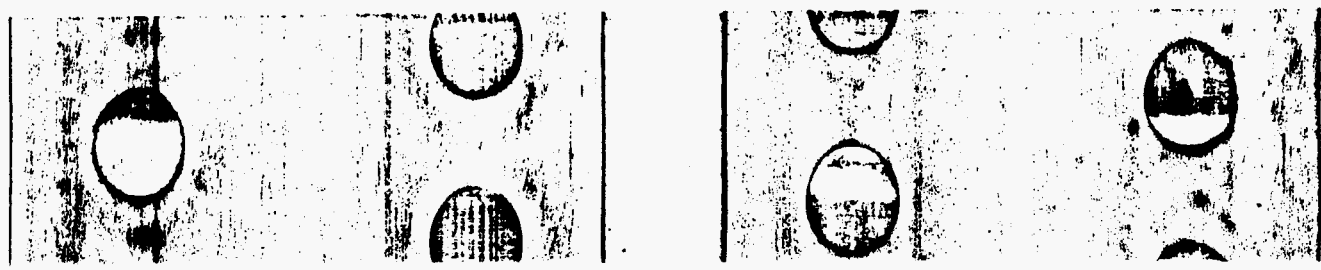
FORM: 4311-3  
RETAIN: OPT  
AREA: JACKSONVILL  
PAGE: 3  
PROGRAM NAME: MJ04A020

ORIGINATING RATE-CENTER: 181\*\*\*\*\*  
TERMINATING RATE-CENTER: 099\*\*\*\*\*  
STUDY PERIOD: 07/01/91 THRU 07/30/91  
REQUEST NUMBER: 40

MESSAGES BY RATE CLASS

HR OF DAY	DAY RATE			EVENING RATE			NIGHT RATE/WEEKEND				
	BUS	RES	COIN	BUS	RES	COIN	TOTAL	BUS	RES	COIN	TOTAL
AM 8											
9											
10											
11											
12											
1 PM											
2											
3											
4											
5											
6											
7											
8											
9											
10											
11											
12											
1											
2											
3											
4											
5											
6											
7											
25 TOTAL											

Attachment D  
Docket No. 910528 - TL  
Order No. 24717  
Page 42 of 65



FSD: MJ0-00-2-C  
DATE: 09/18/91  
TIME: 15:19  
CYCLE: 207

EAS/OPTIONAL CALLING PLAN STUDY  
Palatka to Hawthorne(PCKT) - RES

FORM: 4311-3  
RETAIN: OPT  
AREA: JACKSONVILL  
PAGE: 4

JES NUMBER: JOB07638 JOB NAME: MJ04A03 JOB STEP: MJ04A03 PROC STEP: S010 PROGRAM NAME: MJ04A020

ORIGINATING RATE-CENTER: 181\*\*\*\*\* STUDY PERIOD: 07/01/91 THRU 07/30/91  
TERMINATING RATE-CENTER: 099\*\*\*\*\* REQUEST NUMBER: 40

MINUTES OF USAGE BY RATE CLASS

HR OF DAY	DAY RATE			EVENING RATE			NIGHT RATE/WEEKEND			
	BUS	RES	COIN	BUS	RES	COIN	BUS	RES	COIN	TOTAL
AM 8										
9										
10										
11										
12										
PM 1										
2										
3										
4										
5										
6										
7										
8										
9										
10										
11										
12										
1										
2										
3										
4										
5										
6										
7										
25 TOTAL										

Attachment D  
Docket No. 910528 - TL  
Order No. 24717  
Page 43 of 65

FSD: MJ0- 00-2-C  
DATE: 09/18/91  
TIME: 15:19  
CYCLE: 207 JES NUMBER: JOB07638

EAS/OPTIONAL CALLING PLAN STUDY  
Palatka to Hawthorne(PCKT) - BUS

FORM: 4311-3  
RETAIN: OPT  
AREA: JACKSONVILL  
PAGE: 3  
PROGRAM NAME: MJ04A020

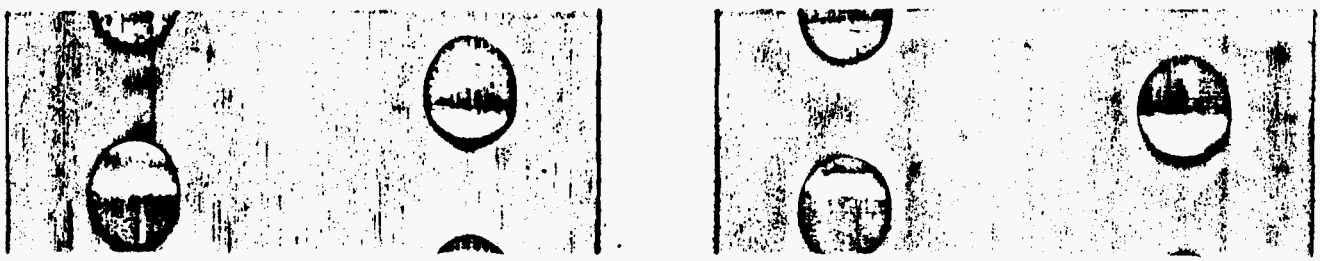
ORIGINATING RATE-CENTER: 181\*\*\*\*\*  
TERMINATING RATE-CENTER: 099\*\*\*\*\*

STUDY PERIOD: 07/01/91 THRU 07/30/91  
REQUEST NUMBER: 39

MESSAGES BY RATE CLASS

HR OF DAY	DAY RATE				EVENING RATE				NIGHT RATE/WEEKEND			
	BUS	RES	COIN	TOTAL	BUS	RES	COIN	TOTAL	BUS	RES	COIN	TOTAL
AM 8												
9												
10												
11												
12												
PH 1												
2												
3												
4												
5												
6												
7												
8												
9												
10												
11												
12												
1												
2												
3												
4												
5												
6												
7												
25 TOTAL												

Attachment D  
Docket No. 910528 - TL  
Order No. 24717  
Page 44 of 65



FSD: MJ0, JO-2-C  
 DATE: 09/18/91  
 TIME: 15:19  
 CYCLE: 207 JES NUMBER: JOB07638

EAS/OPTIONAL CALLING PLAN STUDY  
 Palatka to Hawthorne(PCKT) - BUS

FORM: 4311-3  
 RETAIN: OPT  
 AREA: JACKSONVILL  
 PAGE: 4  
 PROGRAM NAME: MJ04A020

ORIGINATING RATE-CENTER: 181\*\*\*\*\*  
 TERMINATING RATE-CENTER: 099\*\*\*\*\*  
 STUDY PERIOD: 07/01/91 THRU 07/30/91  
 REQUEST NUMBER: 39

MINUTES OF USAGE BY RATE CLASS

HR OF DAY	DAY RATE				EVENING RATE				NIGHT RATE/WEEKEND			
	BUS	RES	COIN	TOTAL	BUS	RES	COIN	TOTAL	BUS	RES	COIN	TOTAL
1 AM												
2 AM												
3 AM												
4 AM												
5 AM												
6 AM												
7 AM												
8 AM												
9 AM												
10 AM												
11 AM												
12 PM												
1 PM												
2 PM												
3 PM												
4 PM												
5 PM												
6 PM												
7 PM												
TOTAL												

Attachment D  
 Docket No. 910528 - TL  
 Order No. 24717  
 Page 45 of 65

FSD: MJ0. 00-2-C  
 DATE: 09/18/91  
 TIME: 15:19  
 CYCLE: 207 JES NUMBER: JOB07638 JOB NAME: MJ04A03 JOB STEP: MJ04A03 PROC STEP: S010

EAS/OPTIONAL CALLING PLAN STUDY  
 Palatka to Keystone Heights(PCKT) - RES

PROGRAM NAME: MJ04A020

FORM: 4311-3  
 RETAIN: OPT  
 AREA: JACKSONVILL  
 PAGE: 3

ORIGINATING RATE-CENTER: 181\*\*\*\*\*  
 TERMINATING RATE-CENTER: 122\*\*\*\*\*

STUDY PERIOD: 07/01/91 THRU 07/30/91  
 REQUEST NUMBER: 42

MESSAGES BY RATE CLASS

HR OF DAY	DAY RATE				EVENING RATE				NIGHT RATE/WEEKEND			
	BUS	RES	COIN	TOTAL	BUS	RES	COIN	TOTAL	BUS	RES	COIN	TOTAL
AM 8												
9												
10												
11												
PH 12												
1												
2												
3												
4												
5												
6												
7												
8												
9												
10												
11												
12												
1												
2												
3												
4												
5												
6												
7												
25 TOTAL												

Attachment D  
 Docket No. 910528 - TL  
 Order No. 24717  
 Page 46 of 65



FSD: MJ0. J0-2-C  
 DATE: 09/18/91  
 TIME: 15:19  
 CYCLE: 207 JES NUMBER: JOB07638 JOB NAME: MJ04A03 JOB STEP: MJ04A03 PROC STEP: S010

EAS/OPTIONAL CALLING PLAN STUDY  
 Palatka to Keystone Heights(PCKT) - RES

FORM: 4311-3  
 RETAIN: OPT  
 AREA: JACKSONVILL  
 PAGE: 4

PROGRAM NAME: MJ04A020

ORIGINATING RATE-CENTER: 181\*\*\*\*\*  
 TERMINATING RATE-CENTER: 122\*\*\*\*\*

STUDY PERIOD: 07/01/91 THRU 07/30/91  
 REQUEST NUMBER: 42

MINUTES OF USAGE BY RATE CLASS

HR OF DAY	DAY RATE				EVENING RATE				NIGHT RATE/WEEKEND			
	BUS	RES	COIN	TOTAL	BUS	RES	COIN	TOTAL	BUS	RES	COIN	TOTAL
AM 8												
9												
10												
11												
12												
PM 1												
2												
3												
4												
5												
6												
7												
8												
9												
10												
11												
12												
1												
2												
3												
4												
5												
6												
7												
25 TOTAL												

Attachment D  
 Docket No. 910528 - TL  
 Order No. 24717  
 Page 47 of 65

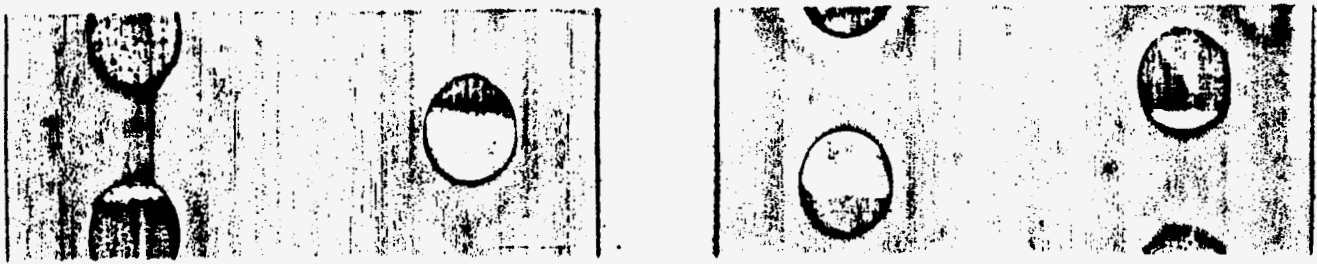
ORIGINATING RATE-CENTER: 181\*\*\*\*\* STUDY PERIOD: 07/01/91 THRU 07/30/91  
TERMINATING RATE-CENTER: 122\*\*\*\*\* REQUEST NUMBER: 41

MESSAGES BY RATE CLASS

HR OF DAY	DAY RATE				EVENING RATE			NIGHT RATE/WEEKEND				
	BUS	RES	COIN	TOTAL	BUS	RES	COIN	TOTAL	BUS	RES	COIN	TOTAL
AM 8												
9												
10												
11												
12												
PH 1												
2												
3												
4												
5												
6												
7												
8												
9												
10												
11												
12												
AM 1												
2												
3												
4												
5												
6												
7												
8												
9												
10												
11												
12												
1												
2												
3												
4												
5												
6												
7												
8												
9												
10												
11												
12												
1												
2												
3												
4												
5												
6												
7												
8												
9												
10												
11												
12												
TOTAL												

25  
12  
11  
10  
9  
8  
7  
6  
5  
4  
3  
2  
1  
AM  
PH  
AM

Attachment D  
Docket No. 910528 - TL  
Order No. 24717  
Page 48 of 65







FSD: MJ0- J0-2-C  
 DATE: 09/18/91  
 TIME: 15:19

EAS/OPTIONAL CALLING PLAN STUDY  
 Palatka to Melrose(I) (PKT) - RES

FORM: 4311-3  
 RETAIN: OPT  
 AREA: JACKSONVILL  
 PAGE: 3

CYCLE: 207 JES NUMBER: JOB07638 JOB NAME: MJ04A03 JOB STEP: MJ04A03 PROC STEP: S010

PROGRAM NAME: MJ04A020

ORIGINATING RATE-CENTER: 181\*\*\*\*\*  
 TERMINATING RATE-CENTER: 150\*\*\*\*\*

STUDY PERIOD: 07/01/91 THRU 07/30/91  
 REQUEST NUMBER: 44

MESSAGES BY RATE CLASS

HR OF DAY	DAY RATE				EVENING RATE				NIGHT RATE/WEEKEND			
	BUS	RES	COIN	TOTAL	BUS	RES	COIN	TOTAL	BUS	RES	COIN	TOTAL
AM 8												
10												
11												
12												
PH 1												
2												
3												
4												
5												
6												
7												
8												
9												
10												
11												
12												
13												
14												
15												
16												
17												
18 AM												
19												
20												
21												
22												
23												
24												
25 TOTAL												

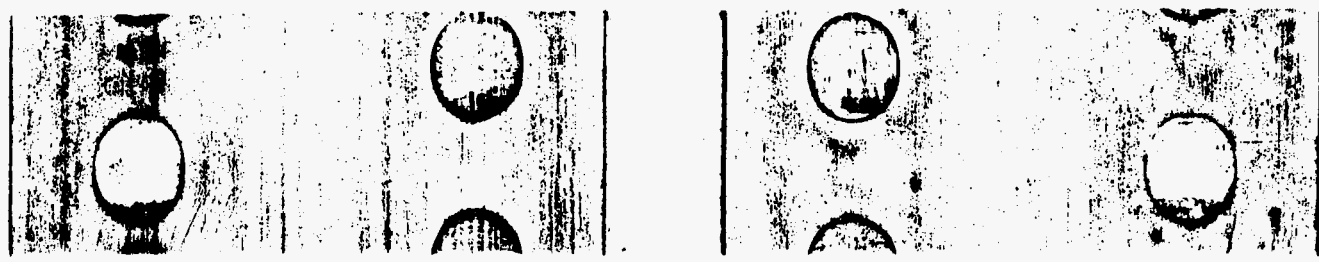
Attachment D  
 Docket No. 910528 - TL  
 Order No. 24717  
 Page 50 of 65



MINUTES OF USAGE BY RATE CLASS

HR OF DAY	DAY RATE			EVENING RATE			NIGHT RATE/WEEKEND					
	BUS	RES	COIN	TOTAL	BUS	RES	COIN	TOTAL	BUS	RES	COIN	TOTAL
AM 8 9 10 11 12												
PM 1 2 3 4 5 6 7												
<b>25</b> TOTAL												

Attachment D  
Docket No. 910528 - TL  
Order No. 24717  
Page 51 of 65



FSD: MJ0. 00-2-C  
 DATE: 09/18/91  
 TIME: 15:19  
 CYCLE: 207 JES NUMBER: JOB07638

EAS/OPTIONAL CALLING PLAN STUDY  
 Palatka to Melrose(I)(PCKT) - BUS  
 JOB NAME: MJ04A03 JOB STEP: MJ04A03 PROC STEP: S010

FORM: 4311-3  
 RETAIN: OPT  
 AREA: JACKSONVILL  
 PAGE: 3  
 PROGRAM NAME: MJ04A020

ORIGINATING RATE-CENTER: 181\*\*\*\*\*  
 TERMINATING RATE-CENTER: 150\*\*\*\*\*  
 STUDY PERIOD: 07/01/91 THRU 07/30/91  
 REQUEST NUMBER: 43

MESSAGES BY RATE CLASS

HR OF DAY	DAY RATE				EVENING RATE				NIGHT RATE/WEEKEND			
	BUS	RES	COIN	TOTAL	BUS	RES	COIN	TOTAL	BUS	RES	COIN	TOTAL
AM 8												
9												
10												
11												
12												
PH 1												
2												
3												
4												
5												
6												
7												
8												
9												
10												
11												
12												
1 AM												
2												
3												
4												
5												
6												
7												
TOTAL												

*Handwritten notes:*  
 0-12  
 1-5  
 6-11  
 12-1  
 2-5  
 6-7

Attachment D  
 Docket No. 910528 - TL  
 Order No. 24717  
 Page 52 of 65



FSD: MJO. J0-2-C  
 DATE: 09/18/91  
 TIME: 15:19  
 CYCLE: 207

EAS/OPTICAL CALLING PLAN STUDY  
 Palatka to Melrose(I)(PCKT) - BUS  
 JOB NUMBER: JOB07638 JOB NAME: MJ04A03 JOB STEP: MJ04A03 PROC STEP: S010

PROGRAM NAME: MJ04A020

FORM: 4311-3  
 RETAIN: OPT  
 AREA: JACKSONVILL  
 PAGE: 4

ORIGINATING RATE-CENTER: 181\*\*\*\*\*  
 TERMINATING RATE-CENTER: 150\*\*\*\*\*

STUDY PERIOD: 07/01/91 THRU 07/30/91  
 REQUEST NUMBER: 43

MINUTES OF USAGE BY RATE CLASS

HR OF DAY	DAY RATE				EVENING RATE				NIGHT RATE/WEEKEND			
	BUS	RES	COIN	TOTAL	BUS	RES	COIN	TOTAL	BUS	RES	COIN	TOTAL
AM 8												
9												
10												
11												
12												
PM 1												
2												
3												
4												
5												
6												
7												
8												
9												
10												
11												
12												
1												
2												
3												
4												
5												
6												
7												
25 TOTAL												

Attachment D  
 Docket No. 910528 - TL  
 Order No. 24717  
 Page 53 of 65

FSD: MJ0- J0-2-C  
DATE: 08/15/91  
TIME: 16:07  
CYCLE: 207

EAS/OPTIONAL CALLING PLAN STUDY  
Palatka to Orange Springs(I) (PKT) - RES

FORM: 4311-1  
RETAIN: OPT  
AREA: JACKSONVILL  
PAGE:

JES NUMBER: JOB04102 JOB NAME: MJ04A03 JOB STEP: MJ04A03 PROC STEP: S010 PROGRAM NAME: MJ04A020  
ORIGINATING RATE-CENTER: 099\*\*\*\*\* STUDY PERIOD: 07/01/91 THRU 07/30/91  
TERMINATING RATE-CENTER: 110\*\*\*\*\* REQUEST NUMBER: 84

THERE ARE NO MESSAGES FITTING THIS SELECTION CRITERIA

Attachment D  
Docket No. 910528 - TL  
Order No. 24717  
Page 54 of 65



FSD: MJ0. J0-2-C  
DATE: 08/15/91  
TIME: 16:07  
CYCLE: 207

EAS/OPTIONAL CALLING PLAN STUDY

Palatka to Orange Springs(I) (PCKT) - RES

FORM: 4311-1  
RETAIN: OPT  
AREA: JACKSONVILL  
PAGE:

JES NUMBER: JOB04102 JOB NAME: MJ04A03 JOB STEP: MJ04A03 PROC STEP: S010 PROGRAM NAME: MJ04A020

ORIGINATING RATE-CENTER: 194\*\*\*\*\*  
TERMINATING RATE-CENTER: 050\*\*\*\*\*

STUDY PERIOD: 07/01/91 THRU 07/30/91  
REQUEST NUMBER: 05

THERE ARE NO MESSAGES FITTING THIS SELECTION CRITERIA

Attachment D  
Docket No. 910528 - TL  
Order No. 24717  
Page 55 of 65



FSD: MJ0, J0-2-C  
DATE: 08/15/91  
TIME: 16:07  
CYCLE: 207

EAS/OPTIONAL CALLING PLAN STUDY  
Palatka to Orange Springs(I) (PCKT) - BUS

FORM: 4311-1  
RETAIN: OPT  
AREA: JACKSONVILL  
PAGE:

JES NUMBER: JOB04102 JOB NAME: MJ04A03 JOB STEP: MJ04A03 PROC STEP: S010 PROGRAM NAME: MJ04A020

ORIGINATING RATE-CENTER: 099\*\*\*\*\*  
TERMINATING RATE-CENTER: 110\*\*\*\*\*

STUDY PERIOD: 07/01/91 THRU 07/30/91  
REQUEST NUMBER: 03

THERE ARE NO MESSAGES FITTING THIS SELECTION CRITERIA

Attachment D  
Docket No. 910528 - TL  
Order No. 24717  
Page 56 of 65



FSD: MJ0. J0-2-C  
DATE: 08/15/91  
TIME: 16:07  
CYCLE: 207

EAS/OPTIONAL CALLING PLAN STUDY

Palatka to Orange Springs(I) (PCKT) - BUS

FORM: 4311-1  
RETAIN: OPT  
AREA: JACKSONVILL  
PAGE:

JES NUMBER: JOB04102 JOB NAME: MJ04A03 JOB STEP: MJ04A03 PROC STEP: S010 PROGRAM NAME: MJ04A020

ORIGINATING RATE-CENTER: 181\*\*\*\*\*  
TERMINATING RATE-CENTER: 050\*\*\*\*\*

STUDY PERIOD: 07/01/91 THRU 07/30/91  
REQUEST NUMBER: 02

THERE ARE NO MESSAGES FITTING THIS SELECTION CRITERIA

Attachment D  
Docket No. 910528 - TL  
Order No. 24717  
Page 57 of 65

FSD: MJ0. J0-2-C  
DATE: 09/18/91  
TIME: 15:19  
CYCLE: 207 JES NUMBER: JOB07638

EAS/OPTIONAL CALING PLAN STUDY

Hawthorne(PCKT) to Palatka - RES

FORM: 4311-3  
RETAIN: OPT  
AREA: JACKSONVILL  
PAGE: 3

JOB NAME: MJ04A03 JOB STEP: MJ04A03 PROC STEP: S010

PROGRAM NAME: MJ04A020

ORIGINATING RATE-CENTER: 099\*\*\*\*\*  
TERMINATING RATE-CENTER: 181\*\*\*\*\*

STUDY PERIOD: 07/01/91 THRU 07/30/91  
REQUEST NUMBER: 48

MESSAGES BY RATE CLASS

HR OF DAY	DAY RATE				EVENING RATE				NIGHT RATE/WEEKEND			
	BUS	RES	COIN	TOTAL	BUS	RES	COIN	TOTAL	BUS	RES	COIN	TOTAL
AM 8												
9												
10												
11												
12												
PH 1												
2												
3												
4												
5												
6												
7												
8												
9												
10												
11												
12												
1 AM 1												
2												
3												
4												
5												
6												
7												
25 TOTAL												

Attachment D  
Docket No. 910528 - TL  
Order No. 24717  
Page 58 of 65



FSD: MJG. 00-2-C  
 DATE: 09/18/91  
 TIME: 15:19  
 CYCLE: 207

EAS/OPTIONAL CALLING PLAN STUDY  
 Hawthorne(PCKT) to Palatka - BUS  
 JOB NUMBER: JOB07638 JOB NAME: MJ04A03 JOB STEP: MJ04A03 PROC STEP: S010

FORM: 4311-3  
 RETAIN: OPT  
 AREA: JACKSONVILL  
 PAGE: 3  
 PROGRAM NAME: MJ04A020

ORIGINATING RATE-CENTER: 099\*\*\*\*\* STUDY PERIOD: 07/01/91 THRU 07/30/91  
 TERMINATING RATE-CENTER: 181\*\*\*\*\* REQUEST NUMBER: 47

MESSAGES BY RATE CLASS

HR OF DAY	DAY RATE				EVENING RATE				NIGHT RATE/WEEKEND			
	BUS	RES	COIN	TOTAL	BUS	RES	COIN	TOTAL	BUS	RES	COIN	TOTAL
AM 8												
9												
10												
11												
12												
PM 1												
2												
3												
4												
5												
6												
7												
8												
9												
10												
11												
12												
1												
2												
3												
4												
5												
6												
7												
25 TOTAL												

Attachment D  
 Docket No. 910528 - TL  
 Order No. 24717  
 Page 60 of 65



FSD: MJ0, 00-2-C  
DATE: 09/18/91  
TIME: 15:19  
CYCLE: 207 JES NUMBER: JOB07638 JOB NAME: MJ04A03 JOB STEP: MJ04A03 PROC STEP: S010

EAS/OPTIONAL CALLING PLAN STUDY  
Keystone Heights(PCKT) to Palatka - RES

FORM: 4311-3  
RETAIN: OPT  
AREA: JACKSONVILL  
PAGE: 3

PROGRAM NAME: MJ04A020

ORIGINATING RATE-CENTER: 122\*\*\*\*\*  
TERMINATING RATE-CENTER: 181\*\*\*\*\*

STUDY PERIOD: 07/01/91 THRU 07/30/91  
REQUEST NUMBER: 50

MESSAGES BY RATE CLASS

HR OF DAY	DAY RATE				EVENING RATE				NIGHT RATE/WEEKEND			
	BUS	RES	COIN	TOTAL	BUS	RES	COIN	TOTAL	BUS	RES	COIN	TOTAL
AM 8												
9												
10												
11												
12												
PH 1												
2												
3												
4												
5												
6												
7												
8												
9												
10												
11												
12												
1 AM												
1												
2												
3												
4												
5												
6												
7												
25 TOTAL												

Attachment D  
Docket No. 910528 - TL  
Order No. 24717  
Page 62 of 65





FSD: MJ0. 00-2-C  
DATE: 09/18/91  
TIME: 15:19  
CYCLE: 207 JES NUMBER: JOB07638 JOB NAME: MJ04A03 JOB STEP: MJ04A03 PROC STEP: S010

EAS/OPTICAL CALLING PLAN STUDY  
Keystone Heights(PCKT) to Palatka - BUS

FORM: 4311-3  
RETAIN: OPT  
AREA: JACKSONVILL  
PAGE: 3

PROGRAM NAME: MJ04A020

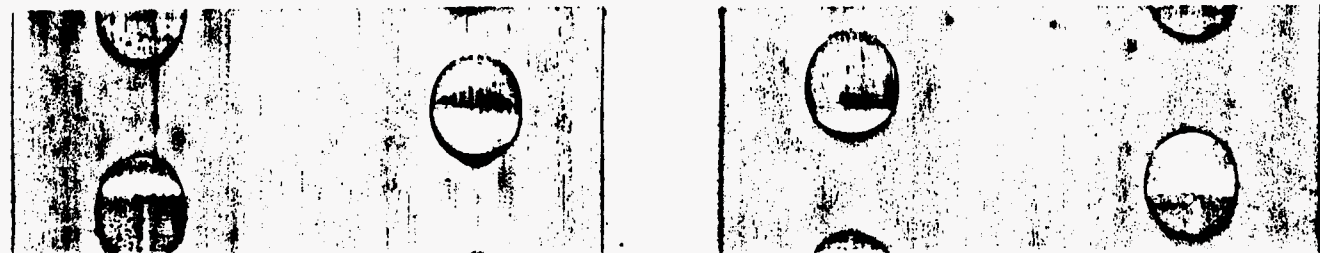
ORIGINATING RATE-CENTER: 122\*\*\*\*\*  
TERMINATING RATE-CENTER: 181\*\*\*\*\*

STUDY PERIOD: 07/01/91 THRU 07/30/91  
REQUEST NUMBER: 49

MESSAGES BY RATE CLASS

HR OF DAY	DAY RATE			EVENING RATE			NIGHT RATE/WEEKEND					
	BUS	RES	COIN	TOTAL	BUS	RES	COIN	TOTAL	BUS	RES	COIN	TOTAL
AM 8												
9												
10												
11												
12												
PH 1												
2												
3												
4												
5												
6												
7												
8												
9												
10												
11												
12												
1												
2												
3												
4												
5												
6												
7												
25 TOTAL												

Attachment D  
Docket No. 910528 - TL  
Order No. 24717  
Page 64 of 65







SOUTHERN BELL TELEPHONE AND TELEGRAPH COMPANY  
FLORIDA  
INTER-EXCHANGE TRAFFIC DATA  
BETWEEN

- PALATKA TO CRESCENT CITY (I), HAWTHORNE, KEYSTONE HEIGHTS, MELROSE (I), ORANGE SPRINGS (I), HAWTHORNE (POCKET), KEYSTONE HEIGHTS (POCKET), MELROSE (POCKET), ORANGE SPRINGS (POCKET)
- HAWTHORNE TO PALATKA, INTERLACHEN (I)
- KEYSTONE HEIGHTS TO PALATKA
- POMONA PARK TO CRESCENT CITY (I)
- WELAKA TO CRESCENT CITY (I)
- HAWTHORNE (POCKET) TO PALATKA
- KEYSTONE HEIGHTS (POCKET) TO PALATKA

FOREIGN EXCHANGE SERVICE

TELEPHONE NO. IN (Physical Location)	TERMINATED (Dial Tone)	NUMBER OF LINES <sup>1</sup>	ESTIMATED MONTHLY CALLS <sup>2</sup>	ESTIMATED BUSY HOUR OCS <sup>3</sup>
PALATKA	CRESCENT CITY (I)	4	3914	24
HAWTHORNE	INTERLACHEN (I)	0	0	0
POMONA PARK	CRESCENT CITY (I)	15	14678	90
WELAKA	CRESCENT CITY (I)	0	0	0
1 PALATKA	HAWTHORNE			
2 HAWTHORNE	PALATKA			
3 PALATKA	KEYSTONE HEIGHTS			
4 KEYSTONE HEIGHTS	PALATKA			
5 PALATKA	MELROSE (I)			
6 PALATKA	ORANGE SPRINGS (I)			
7 PALATKA	HAWTHORNE (POCKET)			
8 PALATKA	KEYSTONE HEIGHTS (POCKET)			
9 PALATKA	MELROSE (I) (POCKET)			
10 PALATKA	ORANGE SPG (I) (POCKET)			
11 HAWTHORNE (POCKET)	PALATKA			
12 KEYSTONE HGTS (POKT)	PALATKA			

NOTE 1: AS OF JUNE, 1991

NOTE 2: CALLS DEFINED AS MESSAGES OR COMPLETED CALLS

NOTE 3: 1 CCS EQUALS 100 SECONDS

SOURCE: SPECIAL FX EXTRACTION

SOUTHERN BELL TELEPHONE AND TELEGRAPH COMPANY  
 FLORIDA

INTER-EXCHANGE TRAFFIC DATA

- PALATKA TO CRESCENT CITY (I), HAWTHORNE, KEYSTONE HEIGHTS, MELROSE (I), ORANGE SPRINGS (I), HAWTHORNE (POCKET), KEYSTONE HEIGHTS (POCKET), MELROSE (POCKET), ORANGE SPRINGS (POCKET)
- HAWTHORNE TO PALATKA, INTERLACHEN (I)
- KEYSTONE HEIGHTS TO PALATKA
- POMONA PARK TO CRESCENT CITY (I)
- WELAKA TO CRESCENT CITY (I)
- HAWTHORNE (POCKET) TO PALATKA
- KEYSTONE HEIGHTS (POCKET) TO PALATKA

FOREIGN EXCHANGE INCLUDED

STUDY ROUTE	MONTHLY MESSAGES			CALLING RATE PER ACCESS LINE PER MONTH*			
	RESIDENCE	BUSINESS	COMBINED	RESIDENCE	BUSINESS	COMBINED	COMBINED 2-WAY
PALATKA TO CRESCENT CITY (I)	3955	6175	10130	.32	2.24	.68	N/A
HAWTHORNE TO INTERLACHEN (I)	2244	377	2621	.86	1.37	.91	N/A
POMONA PARK TO CRESCENT CITY (I)	3	7339	7342	.00	66.12	3.00	N/A
WELAKA TO CRESCENT CITY (I)	3	2	5	.002	.02	.003	N/A
1 PALATKA TO HAWTHORNE							
2 HAWTHORNE TO PALATKA							
3 PALATKA TO KEYSTONE HEIGHTS							
4 KEYSTONE HEIGHTS TO PALATKA							
5 PALATKA TO MELROSE (I)							N/A
6 PALATKA TO ORANGE SPRINGS (I)							N/A

SOUTHERN BELL TELEPHONE AND TELEGRAPH COMPANY  
FLORIDA

INTER-EXCHANGE TRAFFIC DATA

- PALATKA TO CRESCENT CITY (I), HAWTHORNE, KEYSTONE HEIGHTS, MELROSE (I), ORANGE SPRINGS (I), HAWTHORNE (POCKET), KEYSTONE HEIGHTS (POCKET), MELROSE (POCKET), ORANGE SPRINGS (POCKET)
- HAWTHORNE TO PALATKA, INTERLACHEN (I)
- KEYSTONE HEIGHTS TO PALATKA
- POMONA PARK TO CRESCENT CITY (I)
- WELAKA TO CRESCENT CITY (I)
- HAWTHORNE (POCKET) TO PALATKA
- KEYSTONE HEIGHTS (POCKET) TO PALATKA

FOREIGN EXCHANGE INCLUDED

STUDY ROUTE	MONTHLY MESSAGES			CALLING RATE PER ACCESS LINE PER MONTH*			
	RESIDENCE	BUSINESS	COMBINED	RESIDENCE	BUSINESS	COMBINED	COMBINED 2-WAY
1 PALATKA TO HAWTHORNE (POCKET)							
2 PALATKA TO KEYSTONE HEIGHTS (POCKET)							
3 PALATKA TO MELROSE (I)(POCKET)							N/A
4 PALATKA TO ORANGE SPRINGS(I)(POCKET)							N/A
5 HAWTHORNE (POCKET) TO PALATKA							
6 KEYSTONE HEIGHTS (POKT) TO PALATKA							

\* Official, coin and centrex messages are not included in call distribution studies; therefore, official, coin and centrex access lines from Attachment C were excluded in calculating calling rates.

Source: Call Distribution Study (07-01-91 thru 07-30-91)

Monthly Report #7 (06-91), (06-91) Special FX Extraction

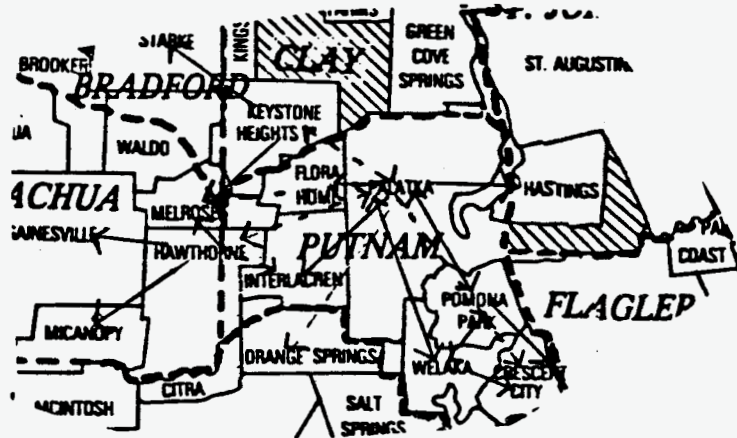
MAP OF  
 PUTNAM COUNTY

SOUTHERN BELL TELEPHONE AND TELEGRAPH COMPANY  
 FLORIDA  
 MONTHLY MESSAGES AND CALLING RATE PER ACCESS LINE  
 DOCKET NO. 910528-TL ORDER NO. 24717

- PALATKA TO CRESCENT CITY (I), HAWTHORNE, KEYSTONE HEIGHTS, MELROSE (I), ORANGE SPRINGS (I), HAWTHORNE (POCKET), KEYSTONE HEIGHTS (POCKET), MELROSE (POCKET), ORANGE SPRINGS (POCKET)
- HAWTHORNE TO PALATKA, INTERLACHEN (I)
- KEYSTONE HEIGHTS TO PALATKA
- POMONA PARK TO CRESCENT CITY (I)
- WELAKA TO CRESCENT CITY (I)
- HAWTHORNE (POCKET) TO PALATKA
- KEYSTONE HEIGHTS (POCKET) TO PALATKA

INDICATING EXISTING TELEPHONE EXCHANGES AND EAS STUDY ROUTES

EXISTING EAS ←————→  
 STUDY ROUTE ← - - - - - →



MAP OF  
PUJINAM COUNTY

SOUTHERN BELL TELEPHONE AND TELEGRAPH COMPANY  
FLORIDA  
MONTHLY MESSAGES AND CALLING RATE PER ACCESS LINE  
DOCKET NO. 910528-TL ORDER NO. 24717

- PALATKA TO CRESCENT CITY (I), HAWTHORNE, KEYSTONE HEIGHTS, MELROSE (I), ORANGE SPRINGS (I), HAWTHORNE (POCKET), KEYSTONE HEIGHTS (POCKET), MELROSE (POCKET), ORANGE SPRINGS (POCKET)
- HAWTHORNE TO PALATKA, INTERLACHEN (I)
- KEYSTONE HEIGHTS TO PALATKA
- POMONA PARK TO CRESCENT CITY (I)
- WELAKA TO CRESCENT CITY (I)
- HAWTHORNE (POCKET) TO PALATKA
- KEYSTONE HEIGHTS (POCKET) TO PALATKA

INDICATING EXISTING TELEPHONE EXCHANGES AND EAS STUDY ROUTES

FROM	TO	MILEAGE	M/M/M	% MAKING 2 OR MORE CALLS PER MONTH
PALATKA	CRESCENT CITY (I)	17	.54	6.77
HAWTHORNE	INTERLACHEN (I)	13	.91	10.74
POMONA PARK	CRESCENT CITY (I)	7	.001	.04
WELAKA	CRESCENT CITY (I)	10	.003	.05
1 PALATKA	HAWTHORNE	27		
2 HAWTHORNE	PALATKA	27		
3 PALATKA	KEYSTONE HEIGHTS	25		
4 KEYSTONE HEIGHTS	PALATKA	25		
5 PALATKA	MELROSE (I)	26		
6 PALATKA	ORANGE SPRINGS (I)	21		
7 PALATKA	HAWTHORNE (POCKET)	27		
8 PALATKA	KEYSTONE HGTS (POCKET)	25		
9 PALATKA	MELROSE (I)(POCKET)	26		
10 PALATKA	ORANGE SPRNG (I)(POCKET)	21		
11 HAWTHORNE (POKT)	PALATKA	27		
12 KEYSTONE HGTS (PKCT)	PALATKA	25		

DEMOGRAPHIC DESCRIPTIONS

PALATKA TO CRESCENT CITY (INTRALATA)

VERY LITTLE COMMUNITY OF INTEREST. CRESCENT CITY WOULD HAVE MUCH MORE INTEREST IN CALLING PALATKA DUE TO SHOPPING, ENTERTAINMENT, MEDICAL AND OTHER FACILITIES. PALATKA HAS LITTLE NEED TO CALL CRESCENT CITY.

HAWTHORNE TO INTERLACHEN (INTRALATA)

NO COMMUNITY OF INTEREST. HAWTHORNE IS IN ANOTHER COUNTY 30 MILES TO THE WEST AND ITS COMMUNITY OF INTEREST IS DIRECTED NORTH TOWARDS GAINESVILLE.

POMONA PARK TO CRESCENT CITY (INTRALATA)

LOTS OF COMMUNITY OF INTEREST PURELY ON A SOCIAL BASIS. THERE ARE NO COMMERCIAL FACILITIES, BUT THEY ARE ADJACENT TO EACH OTHER AND HAVE INTEREST SOCIALLY.

WELAKA TO CRESCENT CITY (INTRALATA)

SOME COMMUNITY OF INTEREST ON A SOCIAL BASIS ONLY DUE TO THEIR PROXIMITY TO EACH OTHER. THERE ARE NO COMMERCIAL FACILITIES TO GENERATE OTHER CALLING NEEDS.

PALATKA TO HAWTHORNE, KEYSTONE HEIGHTS, MELROSE AND ORANGE SPRINGS (INTERLATA)

NO COMMUNITY OF INTEREST. THERE IS MUCH DISTANCE BETWEEN THESE LOCATIONS, IN ADDITION TO BEING IN SEPARATE COUNTIES. PALATKA HAS ABSOLUTELY NO COMMUNITY OF INTEREST IN THESE TOWNS.

HAWTHORNE TO PALATKA (INTERLATA)

NO COMMUNITY OF INTEREST AT ALL.

KEYSTONE HEIGHTS TO PALATKA (INTERLATA)

NO COMMUNITY OF INTEREST AT ALL.