

ATTACHMENT "A"

January 22, 1996

**TAMPA ELECTRIC COMPANY
GPIF TARGETS
April 1, 1996 - September 30, 1996**

Unit	Availability			Heat Rate
	EAF	POF	EUOF	
Gannon 5	90.4	0	9.6 ^{1/}	10,343 ^{1/}
Gannon 6	64.8	27.3	7.9 ^{2/}	10,443 ^{2/}
Big Bend 1	86.7	0	13.3 ^{3/}	10,077 ^{2/}
Big Bend 2	85.9	0	14.1 ^{4/}	10,020 ^{4/}
Big Bend 3	87.1	0	12.9 ^{5/}	9,777 ^{2/}
Big Bend 4	89.7	0	10.3 ^{6/}	10,149 ^{6/}

^{1/} Original Sheet 6.401.96E, Pg. 13

^{2/} Original Sheet 6.401.96E, Pg. 14

^{3/} Original Sheet 6.401.96E, Pg. 15

^{4/} Original Sheet 6.401.96E, Pg. 16

^{5/} Original Sheet 6.401.96E, Pg. 17

^{6/} Original Sheet 6.401.96E, Pg. 18

FLORIDA PUBLIC SERVICE COMMISSION
DOCKET NO. 960001-ET EXHIBIT NO. 27
COMPANY/ TECO/Kearney
WITNESS: [Signature]
DATE: 2/21/96

DOCUMENT NUMBER-DATE

00746 JAN 22 1996

FPSC-RECORDS/REPORTING

**TAMPA ELECTRIC COMPANY
 GENERATING PERFORMANCE INCENTIVE FACTOR
 APRIL 1996 - SEPTEMBER 1996
 TABLE OF CONTENTS**

<u>SCHEDULE</u>	<u>PAGE</u>
GPIF REWARD / PENALTY TABLE ESTIMATED	2
GPIF CALCULATIONS OF MAXIMUM ALLOWED INCENTIVE DOLLARS	3
GPIF TARGET AND RANGE SUMMARY	4
COMPARISON GPIF TARGETS VS PRIOR PERIODS ACTUAL PERFORMANCE	5
GPIF HEAT RATE SUMMARY	5
DERIVATION OF WEIGHTING FACTORS	6
GENERATING PERFORMANCE INCENTIVE POINT TABLES	7 - 12
ESIMATED UNIT PERFORMANCE DATA	13 - 18
PLANNED OUTAGE SCHEDULE	19
CRITICAL PATH METHOD DIAGRAMS	20
TAMPA ELECTRIC COMPANY FORCED OUTAGE AND MAINTENANCE OUTAGE FACTOR GRAPHS	21 - 26
NET HEAT RATE VS NET OUTPUT FACTOR GRAPHS	27 - 32
GENERATING UNITS IN GPIF (TABLE 4.2 IN MANUAL)	33
UNIT RATINGS AS OF APRIL 1, 1996	34
PROJECTED PERCENT GENERATION BY UNIT	35

FLORIDA PUBLIC SERVICE COMMISSION
 DOCKET NO. 960001-EI EXHIBIT NO. 28
 COMPANY/ WITNESS: TECO / Konecni
 DATE: 2/21/96

**TAMPA ELECTRIC COMPANY
GENERATING PERFORMANCE INCENTIVE POINTS TABLE
REWARD / PENALTY TABLE - ESTIMATED
APRIL 1996 - SEPTEMBER 1996**

<u>GENERATING PERFORMANCE INCENTIVE POINTS (GPIP)</u>	<u>FUEL SAVINGS / (LOSS) (\$000)</u>	<u>GENERATING PERFORMANCE INCENTIVE FACTOR (\$000)</u>
+10	4,631.7	2,155.3
+9	4,168.5	1,939.7
+8	3,705.4	1,724.2
+7	3,242.2	1,508.7
+6	2,779.0	1,293.2
+5	2,315.9	1,077.6
+4	1,852.7	862.1
+3	1,389.5	646.6
+2	926.3	431.1
+1	463.2	215.5
0	0	0.0
-1	(696.8)	(215.5)
-2	(1,393.6)	(431.1)
-3	(2,090.4)	(646.6)
-4	(2,787.2)	(862.1)
-5	(3,484.0)	(1,077.6)
-6	(4,180.7)	(1,293.2)
-7	(4,877.5)	(1,508.7)
-8	(5,574.3)	(1,724.2)
-9	(6,271.1)	(1,939.7)
-10	(6,967.9)	(2,155.3)

**TAMPA ELECTRIC COMPANY
GENERATING PERFORMANCE INCENTIVE FACTOR
CALCULATION OF MAXIMUM ALLOWED INCENTIVE DOLLARS
ESTIMATED
APRIL 1996 - SEPTEMBER 1996**

Line 1	Beginning of period balance of common equity End of month common equity:	\$1,069,921,000
Line 2	Month of April 1996	\$1,036,240,000
Line 3	Month of May 1996	\$1,046,386,000
Line 4	Month of June 1996	\$1,056,632,000
Line 5	Month of July 1996	\$1,080,267,000
Line 6	Month of August 1996	\$1,090,845,000
Line 7	Month of September 1996	\$1,101,526,000
Line 8	(summation of line 1 through line 7 divided by 7)	\$1,068,831,000
Line 9	25 Basis points	0.0025
Line 10	Revenue expansion factor	61.3738%
Line 11	Maximum allowed Incentive Dollars (Line 8 times line 9 divided by line 10 times 0.5)	\$2,176,888
Line 12	Jurisdictional Sales	7832857 MWH
Line 13	Total Sales	7911403 MWH
Line 14	Jurisdictional Separation Factor (Line 12 divided by line 13)	99.01%
Line 15	Maximum Allowed Jurisdictional Incentive Dollars (Line 11 times line 14)	\$2,155,275

TAMPA ELECTRIC COMPANY
GPIF TARGET AND RANGE SUMMARY
APRIL 1996 - SEPTEMBER 1996

EQUIVALENT AVAILABILITY

<u>PLANT/UNIT</u>	<u>WEIGHTING FACTOR (%)</u>	<u>EAF TARGET (%)</u>	<u>EAF MAX. (%)</u>	<u>RANGE MIN. (%)</u>	<u>MAX. FUEL SAVINGS (\$000)</u>	<u>MAX. FUEL LOSS (\$000)</u>
GANNON 5	2.95%	90.4	92.3	86.6	136.6	(261.3)
GANNON 6	5.38%	64.8	67.7	58.9	249.2	(628.6)
BIG BEND 1	10.02%	86.7	89.4	81.4	464.0	(864.7)
BIG BEND 2	10.84%	85.9	88.7	80.3	502.0	(986.5)
BIG BEND 3	10.27%	87.1	89.7	81.9	475.8	(1,094.5)
BIG BEND 4	8.47%	89.7	91.8	85.6	<u>392.4</u>	<u>(720.6)</u>
GPIF SYSTEM	47.93%				2,320.0	(4,556.2)

AVERAGE NET OPERATING HEAT RATE
FOR
GPIF COAL GENERATING UNITS

<u>PLANT/UNIT</u>	<u>WEIGHTING FACTOR (%)</u>	<u>ANOHR Btu/kwh</u>	<u>TARGET NOV</u>	<u>ANOHR TARGET RANGE</u>		<u>MAX. FUEL SAVINGS (\$000)</u>	<u>MAX. FUEL LOSS (\$000)</u>
				<u>MIN.</u>	<u>MAX.</u>		
GANNON 5	4.50%	10343	78.7	10143	10543	208.3	(208.3)
GANNON 6	8.93%	10443	77.9	10101	10785	413.4	(413.4)
BIG BEND 1	9.24%	10077	91.9	9849	10305	427.9	(427.9)
BIG BEND 2	9.80%	10020	92.5	9777	10263	453.7	(453.7)
BIG BEND 3	10.63%	9777	94.5	9522	10032	492.2	(492.2)
BIG BEND 4	<u>8.97%</u>	10149	87.5	9949	10349	<u>416.2</u>	<u>(416.2)</u>
GPIF SYSTEM	52.07%					2,411.7	(2,411.7)

TAMPA ELECTRIC COMPANY
COMPARISON OF OPW TARGETS VS. PRIOR PERIOD ACTUAL PERFORMANCE

AVAILABILITY

PLANT/UNIT	TARGET WEIGHTING FACTOR	NORMALIZED WEIGHTING FACTOR	TARGET PERIOD APR 94 - SEP 94			ACTUAL PERFORMANCE APR 93 - SEP 93			ACTUAL PERFORMANCE OCT 94 - MAR 95			ACTUAL PERFORMANCE APR 94 - SEP 94			ACTUAL PERFORMANCE OCT 93 - MAR 94			ACTUAL PERFORMANCE APR 93 - SEP 93		
			POF	EUOP	EUOR	POF	EUOP	EUOR	POF	EUOP	EUOR	POF	EUOP	EUOR	POF	EUOP	EUOR	POF	EUOP	EUOR
BRO BOND 1	10.00%	20.9	0.0	11.3	11.3	0.2	11.1	11.1	7.7	7.6	8.2	30.4	10.3	14.8	0.0	14.3	14.3	0.0	14.2	14.2
BRO BOND 2	10.00%	19.4	0.0	14.1	14.1	0.0	11.4	11.4	20.7	11.0	15.6	0.0	20.8	20.8	0.0	7.3	7.3	3.8	8.5	8.8
BRO BOND 3	10.27%	19.8	0.0	11.9	11.9	11.3	13.7	19.9	0.0	12.4	12.6	0.0	9.1	9.1	6.5	6.3	6.6	11.8	12.8	14.3
BRO BOND 4	8.47%	17.4	0.0	10.3	10.3	0.0	7.6	7.6	18.8	10.0	12.3	0.0	7.4	7.4	3.1	3.9	6.2	0.0	15.3	15.3
GANNON 3	2.95%	7.2	0.0	9.6	9.6	0.0	8.3	8.3	4.0	3.6	3.8	2.7	11.9	12.3	4.1	3.7	3.9	20.6	10.9	15.3
GANNON 4	3.30%	13.4	27.5	7.9	10.9	3.0	7.2	7.0	3.6	9.8	10.4	0.0	9.3	9.3	20.3	7.9	11.2	14.0	16.3	19.0
OPW SYSTEM WOTD AVG.	47.93%	100.0	4.3	11.8	12.3	3.0	10.7	11.6	11.8	9.9	11.4	6.5	11.6	12.5	7.0	8.3	9.0	7.4	13.1	14.2
OPW SYSTEM WEIGHTED EQUIVALENT AVAILABILITY			84.0			84.3			70.4			81.9			84.7			79.5		
			3 PERIOD AVERAGE			3 PERIOD AVERAGE														
			POF	EUOP	EUOR	POF	EUOP	EUOR	EUOR											
			7.3	10.7	11.7				81.8											

AVERAGE NET OPERATING HEAT RATE (Btu/kwh)

PLANT/UNIT	TARGET WEIGHTING FACTOR	NORMALIZED WEIGHTING FACTOR	HEAT RATE TARGET	ADJUSTED PRIOR	ADJUSTED PRIOR	ADJUSTED PRIOR
				HEAT RATE APR93 - SEP 93	HEAT RATE APR94 - SEP 94	HEAT RATE APR93 - SEP 93
GANNON 3	4.30%	8.6	10543	10014	10095	10284
GANNON 4	8.93%	17.1	10443	10372	10436	10209
BRO BOND 1	9.34%	17.7	10077	10109	10007	9953
BRO BOND 2	9.80%	18.8	10059	10032	10158	9880
BRO BOND 3	10.43%	20.4	9777	9792	9738	9432
BRO BOND 4	8.97%	17.2	10149	9975	10074	9794
OPW SYSTEM WEIGHTED AVERAGE HEAT RATE (Btu/kwh)	52.07%	100.0	10100	10023	10077	9882

TAMPA ELECTRIC COMPANY
DERIVATION OF WEIGHTING FACTORS
APRIL 1996 - SEPTEMBER 1996
PRODUCTION COSTING SIMULATION
FUEL COST (\$000)

<u>UNIT PERFORMANCE INDICATOR</u>	<u>AT TARGET (1)</u>	<u>IMPROVEMENT (2)</u>	<u>SAVINGS (3)</u>	<u>WEIGHTING FACTOR (% OF SAVINGS)</u>
EQUIVALENT AVAILABILITY				
EA ₁ GANNON 5	135353.1	135216.5	136.6	2.95%
EA ₂ GANNON 6	135353.1	135103.9	249.2	5.38%
EA ₃ BIG BEND 1	135353.1	134889.1	464.0	10.02%
EA ₄ BIG BEND 2	135353.1	134851.1	502.0	10.84%
EA ₅ BIG BEND 3	135353.1	134877.3	475.8	10.27%
EA ₆ BIG BEND 4	135353.1	134960.7	392.4	8.47%
HEAT RATE				
AHR ₁ GANNON 5	135353.1	135144.8	208.3	4.50%
AHR ₂ GANNON 6	135353.1	134939.7	413.4	8.93%
AHR ₃ BIG BEND 1	135353.1	134925.2	427.9	9.24%
AHR ₄ BIG BEND 2	135353.1	134899.4	453.7	9.80%
AHR ₅ BIG BEND 3	135353.1	134860.9	492.2	10.63%
AHR ₆ BIG BEND 4	135353.1	134936.9	416.2	8.97%
TOTAL SAVINGS			4631.7	100.00%

(1) Fuel Adjustment Base Case - All unit performance indicators at target.

(2) All other unit performance indicators at target.

(3) Expressed in replacement energy cost.

TAMPA ELECTRIC COMPANY
GENERATING PERFORMANCE INCENTIVE POINTS TABLE
APRIL 1996 - SEPTEMBER 1996
GANNON 5

<u>EQUIVALENT AVAILABILITY POINTS</u>	<u>FUEL SAVINGS / (LOSS) (\$ X 1000)</u>	<u>ADJUSTED ACTUAL EQUIVALENT AVAILABILITY</u>	<u>AVERAGE HEAT RATE POINTS</u>	<u>FUEL SAVINGS / (LOSS) (\$ X 1000)</u>	<u>ADJUSTED ACTUAL AVERAGE HEAT RATE</u>
+10	136.6	92.3	+10	208.3	10143
+9	122.9	92.1	+9	187.5	10156
+8	109.3	91.9	+8	166.6	10168
+7	95.6	91.7	+7	145.8	10181
+6	82.0	91.5	+6	125.0	10193
+5	68.3	91.4	+5	104.2	10206
+4	54.6	91.2	+4	83.3	10218
+3	41.0	91.0	+3	62.5	10231
+2	27.3	90.8	+2	41.7	10243
+1	13.7	90.6	+1	20.8	10256
				0.0	10268
0	0.0	90.4	0	0.0	10343
				0.0	10358
-1	(26.1)	90.0	-1	(20.8)	10431
-2	(52.3)	89.6	-2	(41.7)	10443
-3	(78.4)	89.3	-3	(62.5)	10456
-4	(104.5)	88.9	-4	(83.3)	10468
-5	(130.7)	88.5	-5	(104.2)	10481
-6	(156.8)	88.1	-6	(125.0)	10493
-7	(182.9)	87.7	-7	(145.8)	10506
-8	(209.0)	87.4	-8	(166.6)	10518
-9	(235.2)	87.0	-9	(187.5)	10531
-10	(261.3)	86.6	-10	(208.3)	10543
	Weighting Factor =	2.99%		Weighting Factor =	4.50%

TAMPA ELECTRIC COMPANY
GENERATING PERFORMANCE INCENTIVE POINTS TABLE
APRIL 1996 - SEPTEMBER 1996
GANNON 6

EQUIVALENT AVAILABILITY POINTS	FUEL SAVINGS / (LOSS) (\$ X 1000)	ADJUSTED ACTUAL EQUIVALENT AVAILABILITY	AVERAGE HEAT RATE POINTS	FUEL SAVINGS / (LOSS) (\$ X 1000)	ADJUSTED ACTUAL AVERAGE HEAT RATE
+10	249.2	67.7	+10	342.0	10101
+9	234.3	67.4	+9	307.8	10128
+8	199.4	67.1	+8	273.6	10155
+7	174.4	66.8	+7	239.4	10182
+6	149.5	66.5	+6	205.2	10208
+5	124.6	66.3	+5	171.0	10235
+4	99.7	66.0	+4	136.8	10262
+3	74.8	65.7	+3	102.6	10288
+2	49.8	65.4	+2	68.4	10315
+1	24.9	65.1	+1	34.2	10342
				0.0	10368
0	0.0	64.8	0	0.0	10443
				0.0	10518
-1	62.9	64.2	-1	(34.2)	10545
-2	125.7	63.6	-2	(68.4)	10572
-3	188.6	63.0	-3	(102.6)	10599
-4	251.4	62.4	-4	(136.8)	10625
-5	314.3	61.9	-5	(171.0)	10652
-6	377.2	61.3	-6	(205.2)	10679
-7	440.0	60.7	-7	(239.4)	10705
-8	502.9	60.1	-8	(273.6)	10732
-9	565.7	59.5	-9	(307.8)	10758
-10	628.6	58.9	-10	(342.0)	10785
	Weighting Factor =	5.38%		Weighting Factor =	8.93%

TAMPA ELECTRIC COMPANY
GENERATING PERFORMANCE INCENTIVE POINTS TABLE
APRIL 1996 - SEPTEMBER 1996
BIG BEND 1

EQUIVALENT AVAILABILITY POINTS	FUEL SAVINGS / (LOSS) (\$ X 1000)	ADJUSTED ACTUAL EQUIVALENT AVAILABILITY	AVERAGE HEAT RATE POINTS	FUEL SAVINGS / (LOSS) (\$ X 1000)	ADJUSTED ACTUAL AVERAGE HEAT RATE
+10	464.0	89.4	+10	427.9	9849
+9	417.6	89.1	+9	385.1	9864
+8	371.2	88.9	+8	342.3	9880
+7	324.8	88.6	+7	299.5	9895
+6	278.4	88.3	+6	256.7	9910
+5	232.0	88.1	+5	214.0	9926
+4	185.6	87.8	+4	171.2	9941
+3	139.2	87.5	+3	128.4	9956
+2	92.8	87.2	+2	85.6	9972
+1	46.4	87.0	+1	42.8	9987
				0.0	10002
0	0.0	86.7	0	0.0	10077
				0.0	10152
-1	86.5	86.2	-1	(42.8)	10167
-2	172.9	85.6	-2	(85.6)	10183
-3	259.4	85.1	-3	(128.4)	10198
-4	345.9	84.6	-4	(171.2)	10213
-5	432.4	84.1	-5	(214.0)	10229
-6	518.8	83.5	-6	(256.7)	10244
-7	605.3	83.0	-7	(299.5)	10259
-8	691.8	82.5	-8	(342.3)	10275
-9	778.2	81.9	-9	(385.1)	10290
-10	864.7	81.4	-10	(427.9)	10305
	Weighting Factor =	10.02%		Weighting Factor =	9.24%

TAMPA ELECTRIC COMPANY
GENERATING PERFORMANCE INCENTIVE POINTS TABLE
APRIL 1996 - SEPTEMBER 1996
BIG BEND 2

<u>EQUIVALENT AVAILABILITY POINTS</u>	<u>FUEL SAVINGS / (LOSS) (\$ X 1000)</u>	<u>ADJUSTED ACTUAL EQUIVALENT AVAILABILITY</u>	<u>AVERAGE HEAT RATE POINTS</u>	<u>FUEL SAVINGS / (LOSS) (\$ X 1000)</u>	<u>ADJUSTED ACTUAL AVERAGE HEAT RATE</u>
+10	502.0	88.7	+10	453.7	9777
+9	451.8	88.4	+9	408.3	9793
+8	401.6	88.1	+8	363.0	9810
+7	351.4	87.9	+7	317.6	9827
+6	301.2	87.6	+6	272.2	9844
+5	251.0	87.3	+5	226.9	9861
+4	200.8	87.0	+4	181.5	9877
+3	150.6	86.7	+3	136.1	9894
+2	100.4	86.5	+2	90.7	9911
+1	50.2	86.2	+1	45.4	9928
				0.0	9945
0	0.0	85.9	0	0.0	10020
				0.0	10095
-1	(98.7)	85.3	-1	(45.4)	10111
-2	(197.3)	84.8	-2	(90.7)	10128
-3	(296.0)	84.2	-3	(136.1)	10145
-4	(394.6)	83.7	-4	(181.5)	10162
-5	(493.3)	83.1	-5	(226.9)	10179
-6	(591.9)	82.5	-6	(272.2)	10195
-7	(690.6)	82.0	-7	(317.6)	10212
-8	(789.2)	81.4	-8	(363.0)	10229
-9	(887.9)	80.9	-9	(408.3)	10246
-10	(986.5)	80.3	-10	(453.7)	10263
	Weighting Factor =	10.84%		Weighting Factor =	9.80%

TAMPA ELECTRIC COMPANY
GENERATING PERFORMANCE INCENTIVE POINTS TABLE
APRIL 1996 - SEPTEMBER 1996
BIG BEND 3

EQUIVALENT AVAILABILITY POINTS	FUEL SAVINGS / (LOSS) (\$ X 1000)	ADJUSTED ACTUAL EQUIVALENT AVAILABILITY	AVERAGE HEAT RATE POINTS	FUEL SAVINGS / (LOSS) (\$ X 1000)	ADJUSTED ACTUAL AVERAGE HEAT RATE
+10	475.8	89.7	+10	492.2	9522
+9	428.2	89.4	+9	443.0	9540
+8	380.6	89.2	+8	393.8	9558
+7	333.1	88.9	+7	344.5	9576
+6	285.5	88.7	+6	295.3	9594
+5	237.9	88.4	+5	246.1	9612
+4	190.3	88.1	+4	196.9	9630
+3	142.7	87.9	+3	147.7	9648
+2	95.2	87.6	+2	98.4	9666
+1	47.6	87.4	+1	49.2	9684
				0.0	9702
0	0.0	87.1	0	0.0	9777
				0.0	9852
-1	109.5	86.6	-1	(49.2)	9870
-2	218.9	86.1	-2	(98.4)	9888
-3	328.4	85.5	-3	(147.7)	9906
-4	437.8	85.0	-4	(196.9)	9924
-5	547.3	84.5	-5	(246.1)	9942
-6	656.7	84.0	-6	(295.3)	9960
-7	766.2	83.5	-7	(344.5)	9978
-8	875.6	82.9	-8	(393.8)	9996
-9	985.1	82.4	-9	(443.0)	10014
-10	1,094.5	81.9	-10	(492.2)	10032
	Weighting Factor =	10.27%		Weighting Factor =	10.63%

TAMPA ELECTRIC COMPANY
GENERATING PERFORMANCE INCENTIVE POINTS TABLE
APRIL 1996 - SEPTEMBER 1996
BIG BEND 4

<u>EQUIVALENT AVAILABILITY POINTS</u>	<u>FUEL SAVINGS / (LOSSES) (\$ X 1000)</u>	<u>ADJUSTED ACTUAL EQUIVALENT AVAILABILITY</u>	<u>AVERAGE HEAT RATE POINTS</u>	<u>FUEL SAVINGS / (LOSSES) (\$ X 1000)</u>	<u>ADJUSTED ACTUAL AVERAGE HEAT RATE</u>
+10	392.4	91.8	+10	416.2	9949
+9	353.2	91.6	+9	374.6	9962
+8	313.9	91.4	+8	333.0	9976
+7	274.7	91.2	+7	291.3	9987
+6	235.4	91.0	+6	249.7	9999
+5	196.2	90.8	+5	208.1	10012
+4	157.0	90.5	+4	166.5	10024
+3	117.7	90.3	+3	124.9	10037
+2	78.5	90.1	+2	83.2	10049
+1	39.2	89.9	+1	41.6	10062
				0.0	10074
0	0.0	89.7	0	0.0	10149
				0.0	10224
-1	72.1	89.3	-1	(41.6)	10237
-2	144.1	88.9	-2	(83.2)	10249
-3	216.2	88.5	-3	(124.9)	10262
-4	288.2	88.1	-4	(166.5)	10274
-5	360.3	87.7	-5	(208.1)	10287
-6	432.4	87.2	-6	(249.7)	10299
-7	504.4	86.8	-7	(291.3)	10312
-8	576.5	86.4	-8	(333.0)	10324
-9	648.5	86.0	-9	(374.6)	10337
-10	720.6	85.6	-10	(416.2)	10349
	Weighting Factor =	8.47%		Weighting Factor =	8.97%

TAMPA ELECTRIC COMPANY

ESTIMATED UNIT PERFORMANCE DATA

APRIL 1996 - SEPTEMBER 1996

PLANT/UNIT	MONTH OF:	MONTH OF:	MONTH OF:	MONTH OF:	MONTH OF:	MONTH OF:	PERIOD
GANNON 5	APR 96	MAY 96	JUN 96	JUL 96	AUG 96	SEP 96	SUMMER 1996
1. EAF (%)	90.4	90.5	90.4	90.5	90.5	90.4	90.4
2. POF	0.0	0.0	0.0	0.0	0.0	0.0	0.0
3. EUOF	9.6	9.5	9.6	9.5	9.5	9.6	9.6
4. EUOR	9.6	9.5	9.6	9.5	9.5	9.6	9.6
5. PH	719	744	720	744	744	720	4391
6. SH	685	707	685	707	707	685	4176
7. RSH	0	0	0	0	0	0	0
8. UH	34	37	35	37	37	35	215
9. POH	0	0	0	0	0	0	0
10. FOH & EFOH	61	63	61	63	63	61	372
11. MOH & EMOH	8	8	8	8	8	8	48
12. OPER BTU (GBTU)	1165.213	1198.644	1264.804	1389.509	1412.075	1307.981	7718.206
13. NET GEN (MWH)	113846	116125	122277	131314	135781	126878	746221
14. ANOHR (BTU/KWH)	10235	10322	10344	10429	10400	10309	10343
15. NOF (%)	73.2	72.4	78.6	81.8	84.8	81.6	78.7
16. NSC (MW)	227	227	227	227	227	227	227
17. ANOHR EQUATION	ANOHR = NOF(-14.2064) + 11461.1						

FILED:
SUSPENDED:
EFFECTIVE: 04/01/96
DOCKET NO. : 960001-EI
ORDER NO.:

TAMPA ELECTRIC COMPANY

ESTIMATED UNIT PERFORMANCE DATA

APRIL 1996 - SEPTEMBER 1996

PLANT/UNIT	MONTH OF:	MONTH OF:	MONTH OF:	MONTH OF:	MONTH OF:	MONTH OF:	PERIOD
GANNON 6	APR 96	MAY 96	JUN 96	JUL 96	AUG 96	SEP 96	SUMMER 1996
1. EAF (%)	0.0	31.3	89.1	89.1	89.1	89.1	64.8
2. POF	100.0	64.5	0.0	0.0	0.0	0.0	27.3
3. EUOF	0.0	3.9	10.9	10.9	10.9	10.9	7.9
4. EUOR	0.0	10.9	10.9	10.9	10.9	10.9	10.9
5. PH	719	744	720	744	744	720	4391
6. SH	0	252	688	709	709	688	3042
7. RSH	0	0	0	0	0	0	0
8. UH	719	492	34	35	35	34	1349
9. POH	719	480	0	0	0	0	1199
10. FOH & EFOH	0	21	58	60	60	58	255
11. MOH & EMOH	0	8	21	22	22	21	93
12. OPER BTU (GBTU)	0.000	669.220	1968.629	2110.243	2182.504	2027.366	8957.962
13. NET GEN (MWH)	0	64004	188725	201311	208838	194883	857761
14. ANOHR (BTU/KWH)	0	10458	10431	10483	10451	10403	10443
15. NOF (%)	0.0	70.2	78.0	78.4	81.4	78.5	77.9
16. NSC (MW)	362	362	362	362	362	362	362
17. ANOHR EQUATION	ANOHR = NOF(2.5690) + 10243.3						

FILED:
SUSPENDED:
EFFECTIVE: 04/01/98
DOCKET NO. : 960001-EI
ORDER NO.:

TAMPA ELECTRIC COMPANY

ESTIMATED UNIT PERFORMANCE DATA

APRIL 1996 - SEPTEMBER 1996

PLANT/UNIT	MONTH OF:	MONTH OF:	MONTH OF:	MONTH OF:	MONTH OF:	MONTH OF:	PERIOD
BIG BEND 1	APR 96	MAY 96	JUN 96	JUL 96	AUG 96	SEP 96	SUMMER 1996
1. EAF (%)	86.6	86.7	86.7	86.7	86.7	86.7	86.7
2. POF	0.0	0.0	0.0	0.0	0.0	0.0	0.0
3. EUOF	13.4	13.3	13.3	13.3	13.3	13.3	13.3
4. EUOR	13.4	13.3	13.3	13.3	13.3	13.3	13.3
5. PH	719	744	720	744	744	720	4391
6. SH	658	679	657	679	679	657	4009
7. RSH	0	0	0	0	0	0	0
8. UH	61	65	63	65	65	63	382
9. POH	0	0	0	0	0	0	0
10. FOH & EFOH	67	69	67	69	69	67	408
11. MOH & EMOH	29	30	29	30	30	29	177
12. OPER BTU (GBTU)	2522.548	2611.067	2565.961	2670.772	2679.077	2575.249	15624.674
13. NET GEN (MWH)	252466	260051	255000	263160	263949	255877	1550512
14. ANOHR (BTU/KWH)	9992	10041	10063	10149	10150	10064	10077
15. NOF (%)	91.1	91.0	92.2	92.1	92.3	92.5	91.9
16. NSC (MW)	421	421	421	421	421	421	421
17. ANOHR EQUATION	ANOHR = NOF(-11.4243) + 11127.0						

FILED:
SUSPENDED:
EFFECTIVE: 04/01/96
DOCKET NO. : 960001-EI
ORDER NO.:

TAMPA ELECTRIC COMPANY

ESTIMATED UNIT PERFORMANCE DATA

APRIL 1996 - SEPTEMBER 1996

PLANT/UNIT	MONTH OF:	MONTH OF:	MONTH OF:	MONTH OF:	MONTH OF:	MONTH OF:	PERIOD
BIG BEND 2	APR 96	MAY 96	JUN 96	JUL 96	AUG 96	SEP 96	SUMMER 1996
1. EAF (%)	86.0	85.9	86.0	85.9	85.9	86.0	85.9
2. POF	0.0	0.0	0.0	0.0	0.0	0.0	0.0
3. EUOF	14.0	14.1	14.0	14.1	14.1	14.0	14.1
4. EUOR	14.0	14.1	14.0	14.1	14.1	14.0	14.1
5. PH	719	744	720	744	744	720	4391
6. SH	649	670	649	670	670	649	3957
7. RSH	0	0	0	0	0	0	0
8. UH	70	74	71	74	74	71	434
9. POH	0	0	0	0	0	0	0
10. FOH & EFOH	81	84	81	84	84	81	495
11. MOH & EMOH	20	21	20	21	21	20	123
12. OPER BTU (GBTU)	2499.451	2588.155	2532.189	2632.388	2638.715	2543.713	15434.591
13. NET GEN (MWH)	250745	259098	252757	261676	262292	253878	1540446
14. ANOHR (BTU/KWH)	9968	9989	10018	10080	10060	10019	10020
15. NOF (%)	91.8	91.9	92.5	92.8	93.0	92.9	92.5
18. NSC (MW)	421	421	421	421	421	421	421
17. ANOHR EQUATION	ANOHR = NOF(-14.7280) + 11361.9						

FILED:
SUSPENDED:
EFFECTIVE: 04/01/96
DOCKET NO. : 960001-EI
ORDER NO.:

TAMPA ELECTRIC COMPANY

ESTIMATED UNIT PERFORMANCE DATA

APRIL 1996 - SEPTEMBER 1996

PLANT/UNIT	MONTH OF:	MONTH OF:	MONTH OF:	MONTH OF:	MONTH OF:	MONTH OF:	PERIOD
BIG BEND 3 GPIF	APR 96	MAY 96	JUN 96	JUL 96	AUG 96	SEP 96	SUMMER 1996
1. EAF (%)	87.1	87.1	87.1	87.1	87.1	87.1	87.1
2. POF	0.0	0.0	0.0	0.0	0.0	0.0	0.0
3. EUOF	12.9	12.9	12.9	12.9	12.9	12.9	12.9
4. EUOR	12.9	12.9	12.9	12.9	12.9	12.9	12.9
5. PH	719	744	720	744	744	720	4391
6. SH	655	677	655	677	677	655	3996
7. RSH	0	0	0	0	0	0	0
8. UH	64	67	65	67	67	65	395
9. POH	0	0	0	0	0	0	0
10. FOH & EFOH	64	66	64	66	66	64	390
11. MOH & EMOH	29	30	29	30	30	29	177
12. OPER BTU (GBTU)	2495.816	2598.814	2611.338	2743.630	2758.957	2661.506	15870.061
13. NET GEN (MWH)	258277	267705	267081	278143	279863	272412	1623280
14. ANOHR (BTU/KWH)	9663	9708	9777	9884	9865	9770	9777
15. NOF (%)	91.7	92.0	94.8	95.5	96.1	96.7	94.5
16. NSC (MW)	430	430	430	430	430	430	430
17. ANOHR EQUATION	ANOHR = NOF(-15.0819) + 11176.5						

FILED:
SUSPENDED:
EFFECTIVE: 04/01/96
DOCKET NO. : 980001-EI
ORDER NO.:

TAMPA ELECTRIC COMPANY

ACTUAL UNIT PERFORMANCE DATA

APRIL 1996 - SEPTEMBER 1996

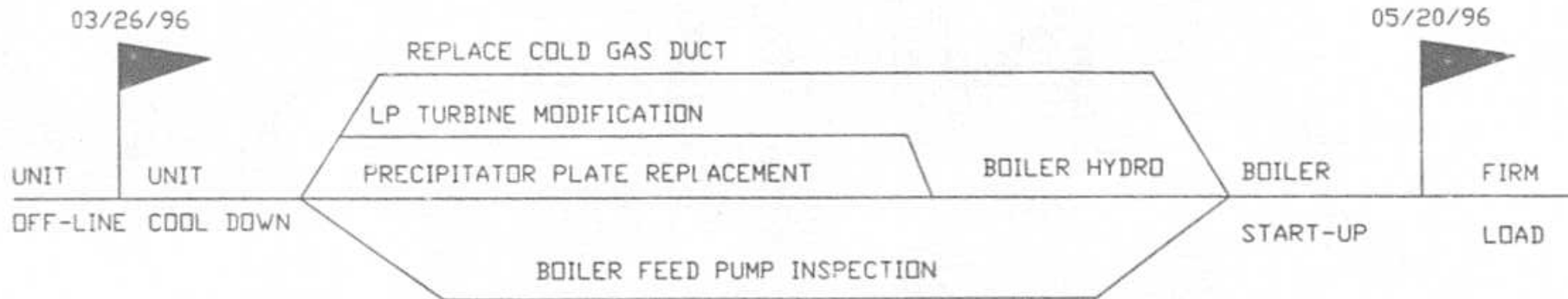
PLANT/UNIT	MONTH OF:	MONTH OF:	MONTH OF:	MONTH OF:	MONTH OF:	MONTH OF:	PERIOD
BIG BEND 4	APR 96	MAY 96	JUN 96	JUL 96	AUG 96	SEP 96	SUMMER 1996
1. EAF (%)	89.7	89.7	89.7	89.7	89.7	89.7	89.7
2. POF	0.0	0.0	0.0	0.0	0.0	0.0	0.0
3. EUOF	10.3	10.3	10.3	10.3	10.3	10.3	10.3
4. EUOR	10.3	10.3	10.3	10.3	10.3	10.3	10.3
5. PH	719	744	720	744	744	720	4391
6. SH	673	698	673	698	698	673	4107
7. RSH	0	0	0	0	0	0	0
8. UH	48	48	47	48	48	47	284
9. POH	0	0	0	0	0	0	0
10. FOH & EFOH	37	38	37	38	38	37	225
11. MOH & EMOH	37	39	37	39	39	37	228
12. OPER BTU (GBTU)	2537.445	2549.977	2612.314	2766.379	2842.650	2899.043	16007.818
13. NET GEN (MWH)	251686	252039	257078	270864	279100	286461	1577228
14. ANOHR (BTU/KWH)	10082	10117	10162	10213	10185	10129	10149
15. NOF (%)	85.2	82.5	87.0	88.6	91.3	90.2	87.5
16. NSC (MW)	439	439	439	439	439	439	439
17. ANOHR EQUATION	ANOHR = NOF(-23.4053) + 12197.3						

FILED:
SUSPENDED:
EFFECTIVE: 04/01/96
DOCKET NO. : 980001-EI
ORDER NO.:

**TAMPA ELECTRIC COMPANY
PLANNED OUTAGE SCHEDULE (ESTIMATED)
GPIF UNITS
APRIL 1996 - SEPTEMBER 1996**

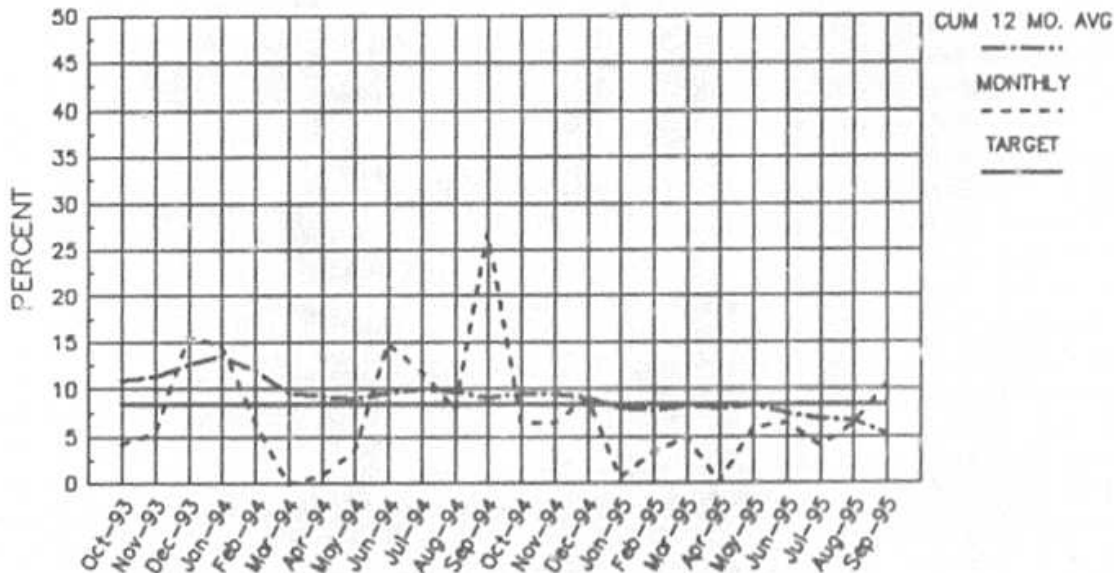
<u>PLANT / UNIT</u>	<u>PLANNED OUTAGE DATES</u>	<u>OUTAGE DISCRPTION</u>
* GANNON 6	MAR 26 - MAY 20	REPLACE COLD GAS DUCT PRECIPITATOR PLATE REPLACEMENT LP TURBINE MODIFICATION BFPT INSPECTION

* OUTAGE START / END DATE OUT OF GPIF PERIOD
+ CPM WAS NOT INCLUDED FOR THIS UNIT, OUTAGE IS LESS THAN 2 WEEKS

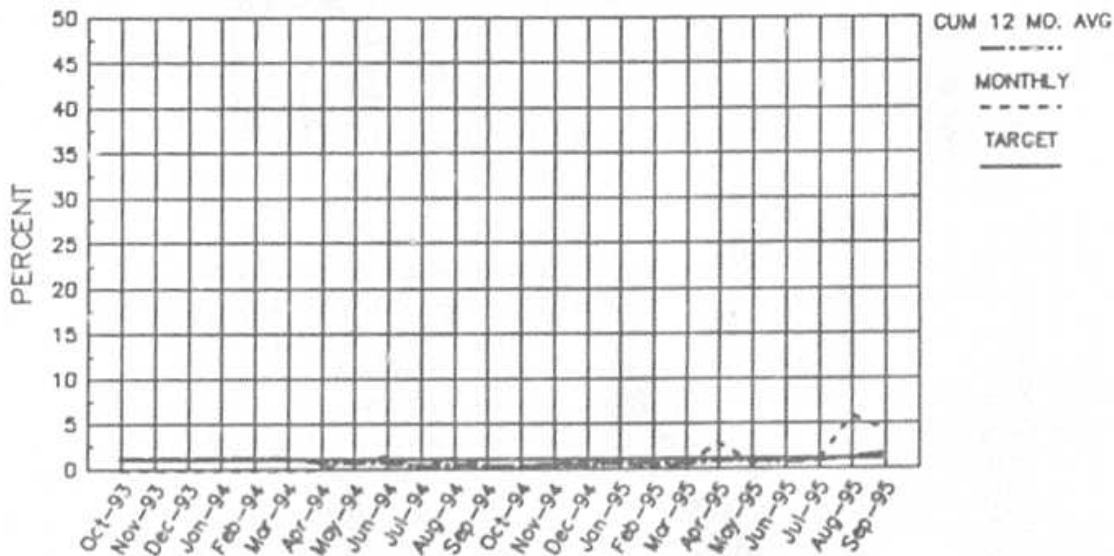


TAMPA ELECTRIC COMPANY
 GANNON UNIT NO. 6
 PLANNED OUTAGE 1995
 PROJECTED CPM
 10/03/95

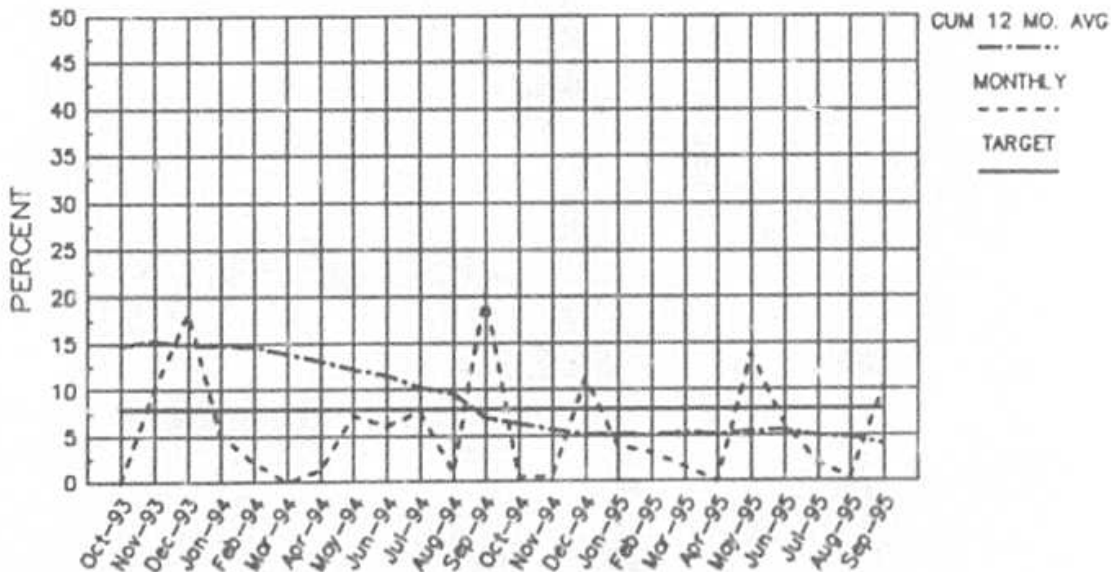
TAMPA ELECTRIC CO.
GANNON UNIT #5
EFOF (ADJUSTED FOR PLANNED OUTAGE HOURS)



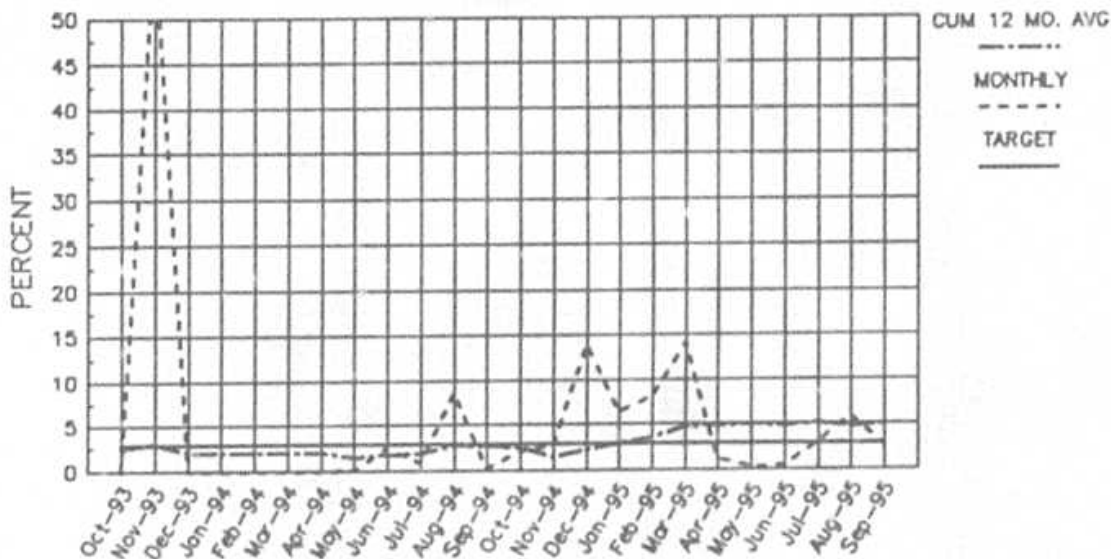
TAMPA ELECTRIC CO.
GANNON UNIT #5
EMOF (ADJUSTED FOR PLANNED OUTAGE HOURS)



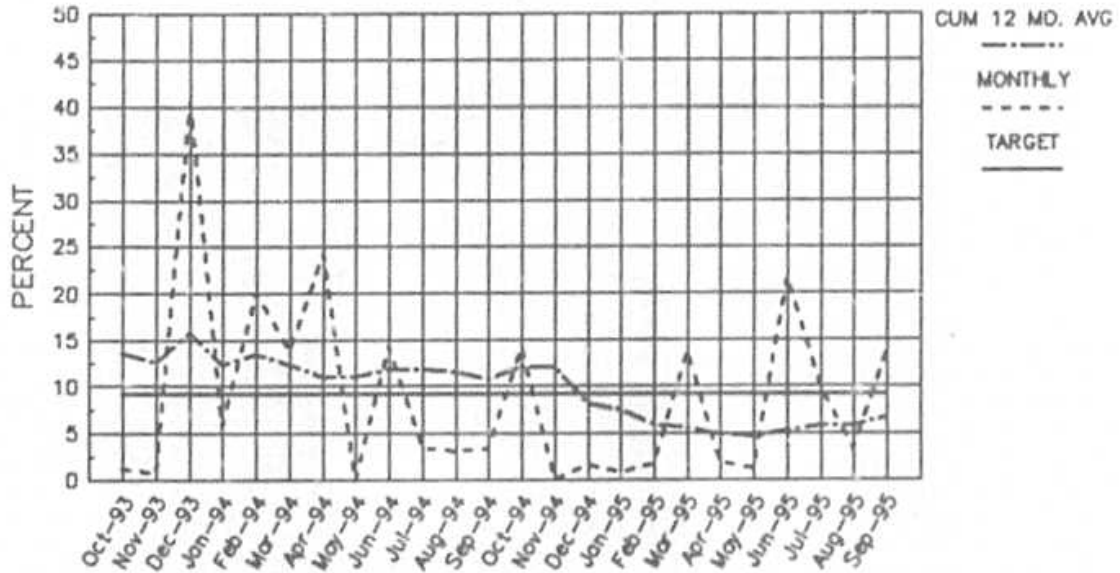
TAMPA ELECTRIC CO.
GANNON UNIT #6
EFOF (ADJUSTED FOR PLANNED OUTAGE HOURS)



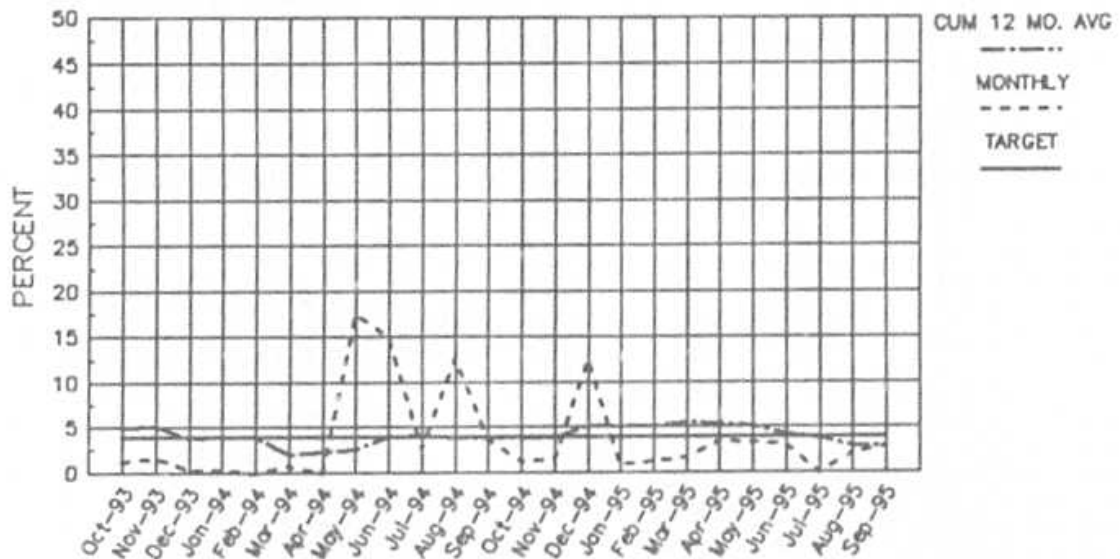
TAMPA ELECTRIC CO.
GANNON UNIT #6
EMOF (ADJUSTED FOR PLANNED OUTAGE HOURS)



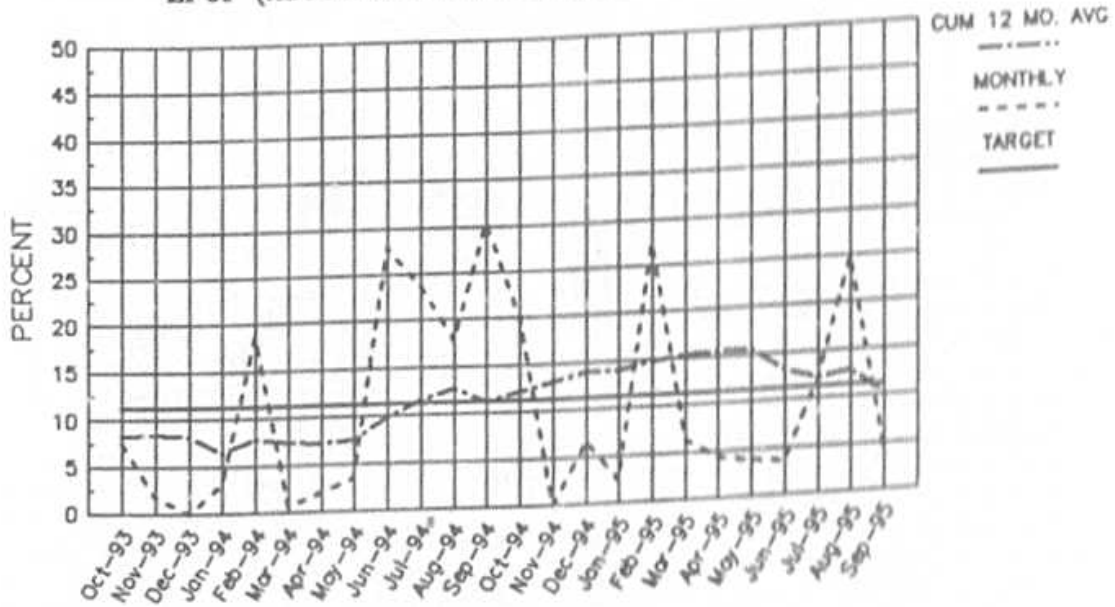
TAMPA ELECTRIC CO.
BIG BEND UNIT #1
EFOF (ADJUSTED FOR PLANNED OUTAGE HOURS)



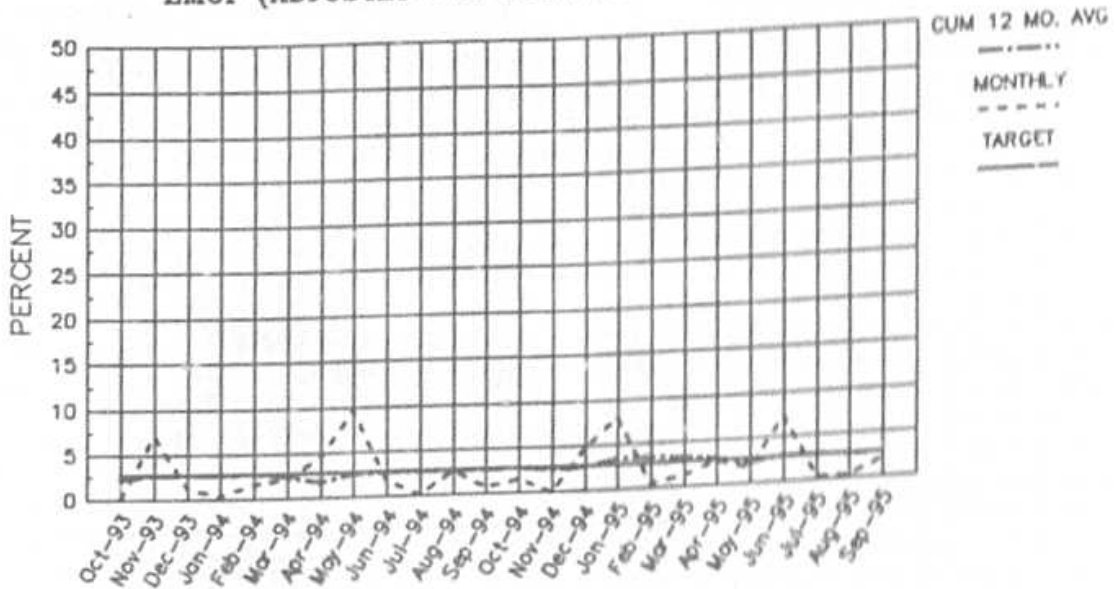
TAMPA ELECTRIC CO.
BIG BEND UNIT #1
EMOF (ADJUSTED FOR PLANNED OUTAGE HOURS)



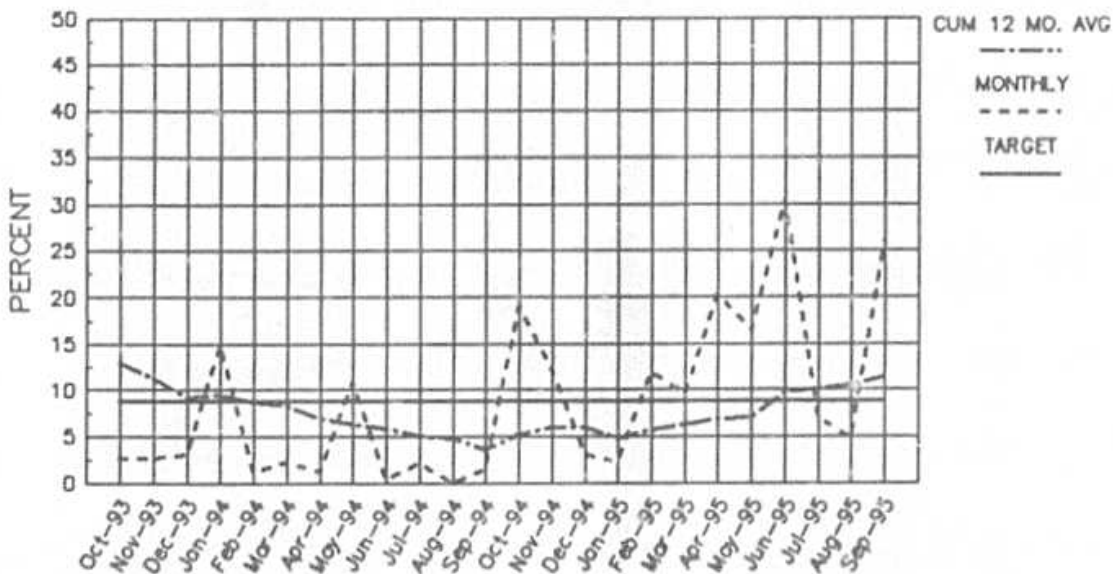
TAMPA ELECTRIC CO.
BIG BEND UNIT #2
EFOF (ADJUSTED FOR PLANNED OUTAGE HOURS)



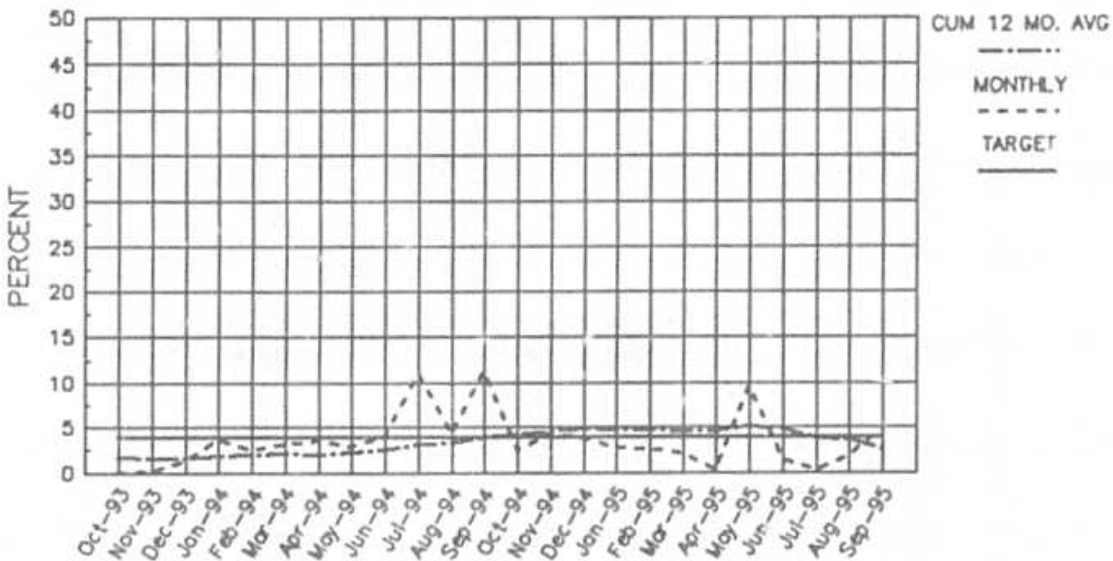
TAMPA ELECTRIC CO.
BIG BEND UNIT #2
EMOF (ADJUSTED FOR PLANNED OUTAGE HOURS)



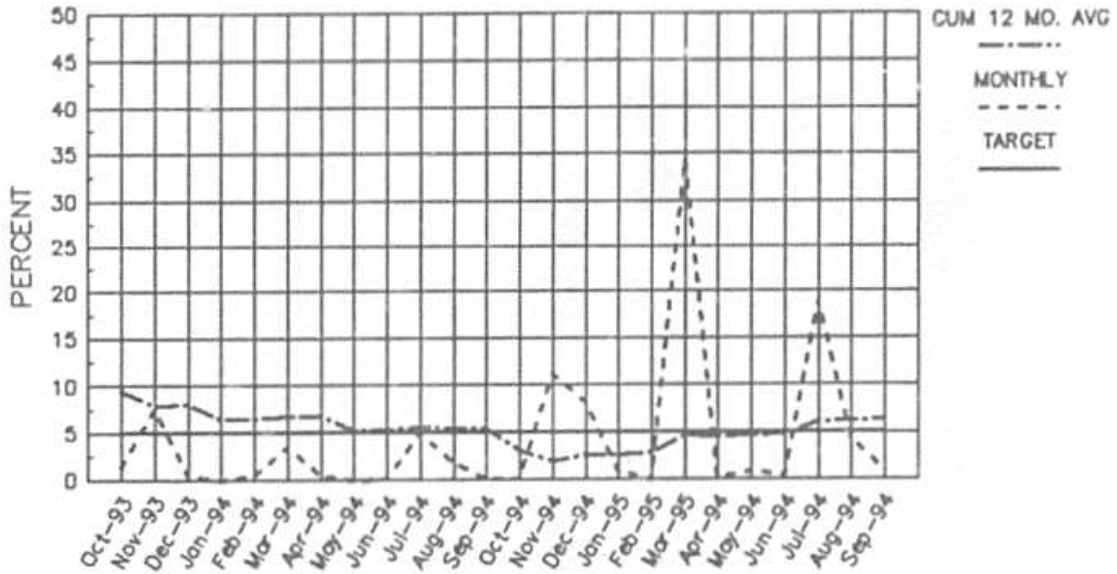
TAMPA ELECTRIC CO.
BIG BEND UNIT #3
EFOF (ADJUSTED FOR PLANNED OUTAGE HOURS)



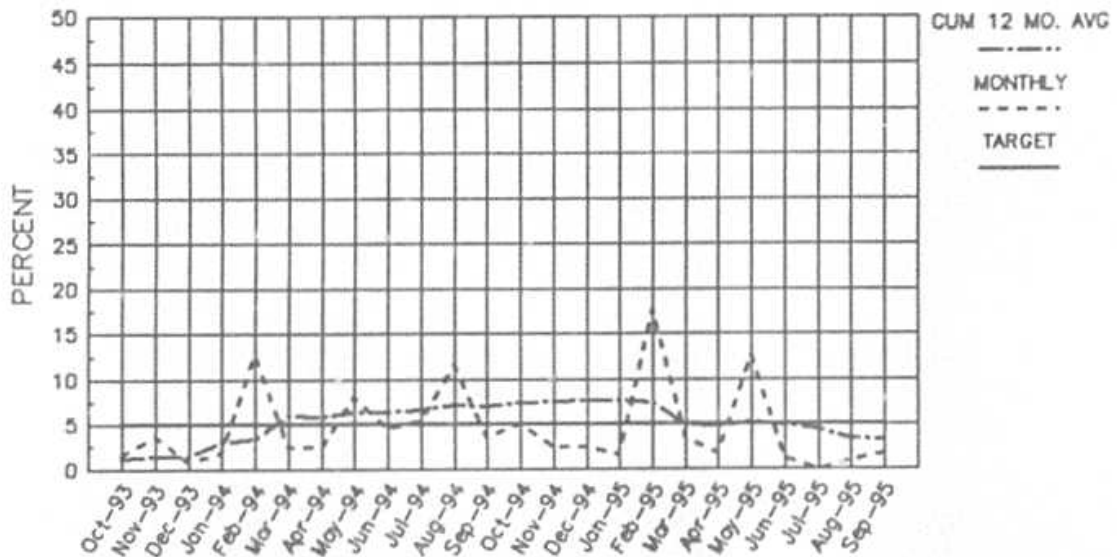
TAMPA ELECTRIC CO.
BIG BEND UNIT #3
EMOF (ADJUSTED FOR PLANNED OUTAGE HOURS)



TAMPA ELECTRIC CO.
BIG BEND UNIT #4
EFOF (ADJUSTED FOR PLANNED OUTAGE HOURS)



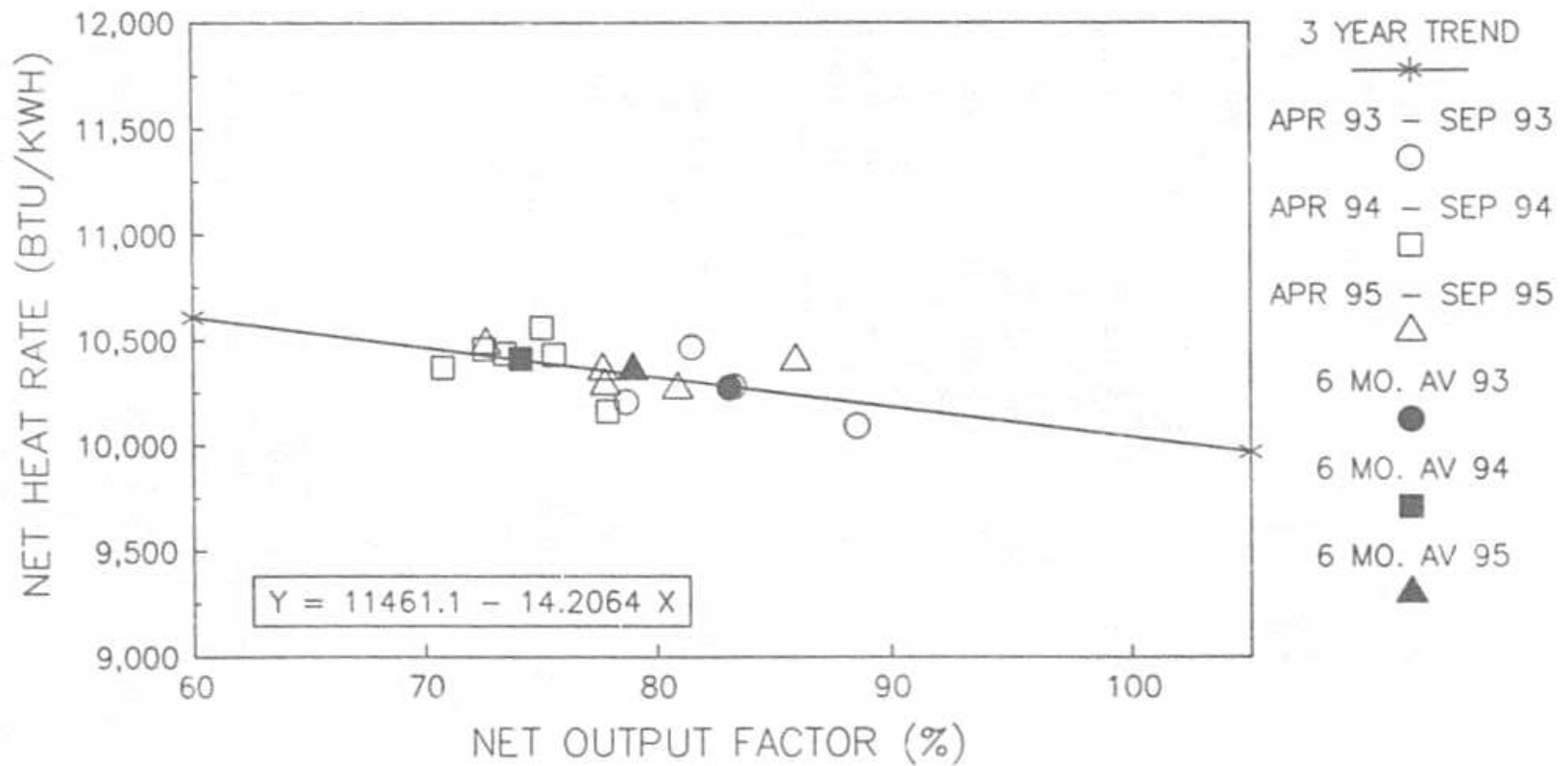
TAMPA ELECTRIC CO.
BIG BEND UNIT #4
EMOF (ADJUSTED FOR PLANNED OUTAGE HOURS)



TAMPA ELECTRIC COMPANY

HEAT RATE VS. NET OUTPUT FACTOR

GANNON 5, SUMMER 1996

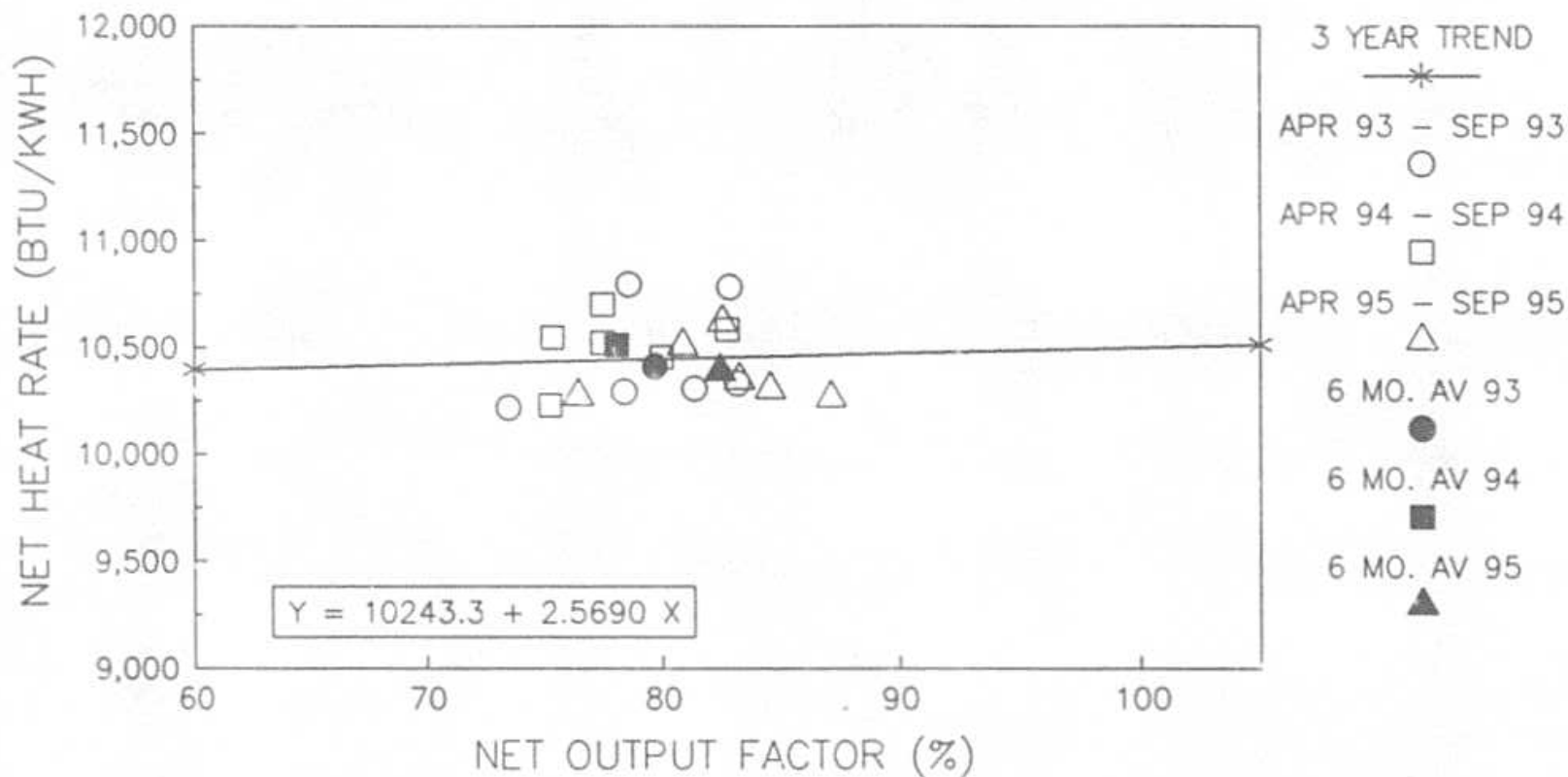


TARGET NET HEAT RATE: 10343
 TARGET NET OUTPUT FACTOR: 78.7

TAMPA ELECTRIC COMPANY

HEAT RATE VS. NET OUTPUT FACTOR

GANNON 6, SUMMER 1996

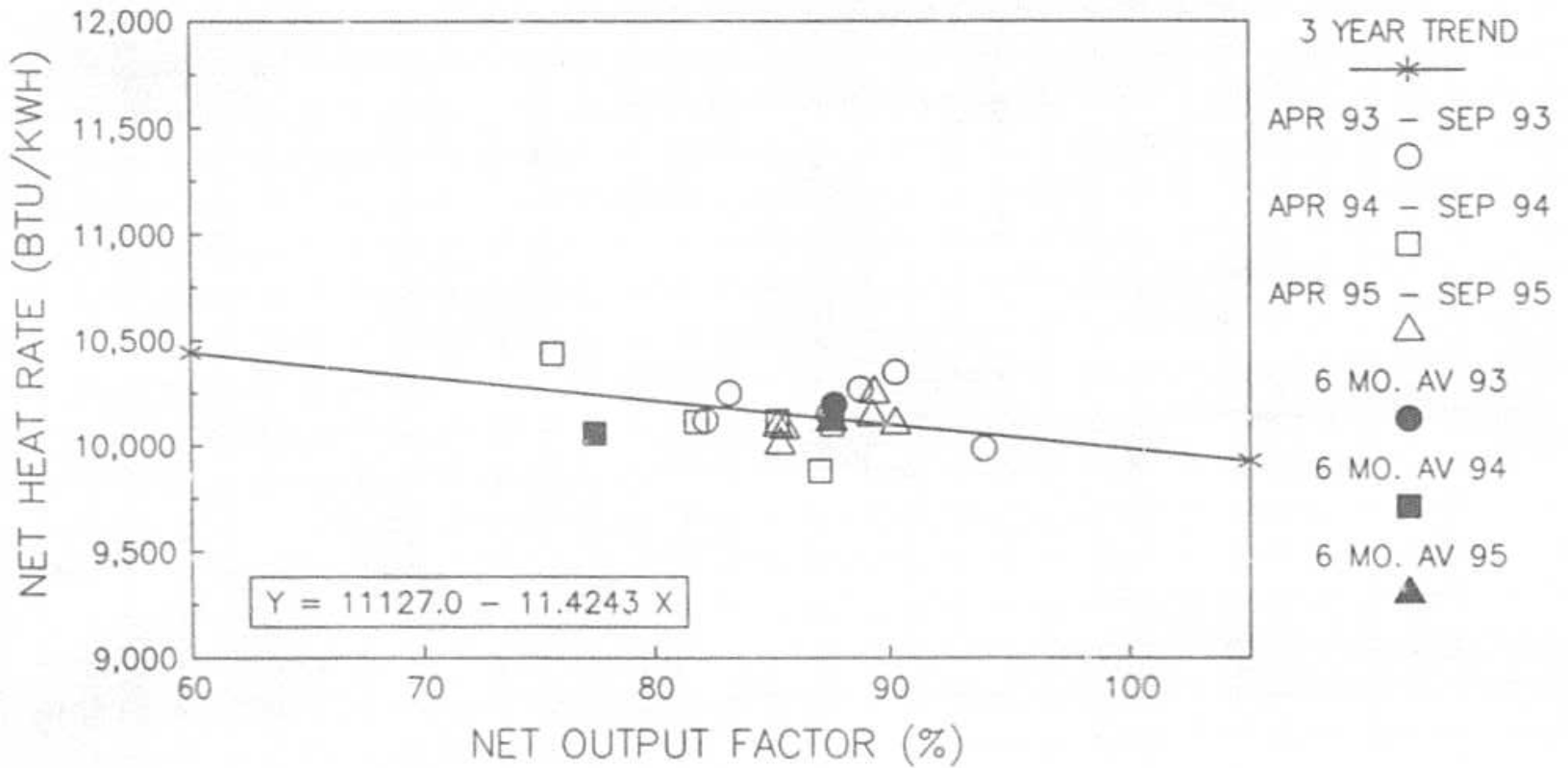


TARGET NET HEAT RATE: 10443
 TARGET NET OUTPUT FACTOR: 77.9

TAMPA ELECTRIC COMPANY

HEAT RATE VS. NET OUTPUT FACTOR

BIG BEND 1, SUMMER 1996

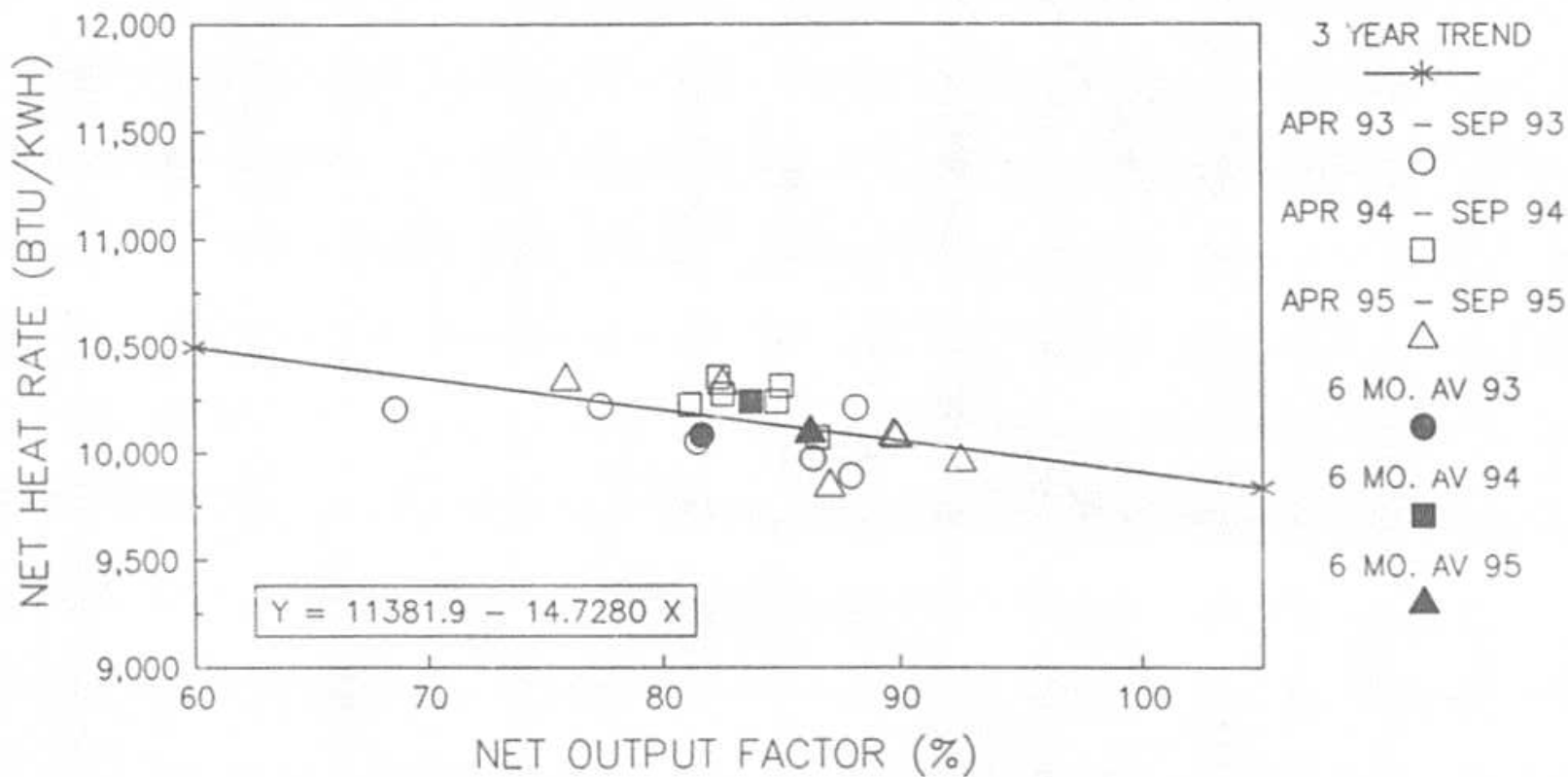


TARGET NET HEAT RATE: 10077
 TARGET NET OUTPUT FACTOR: 91.9

TAMPA ELECTRIC COMPANY

HEAT RATE VS. NET OUTPUT FACTOR

BIG BEND 2, SUMMER 1996

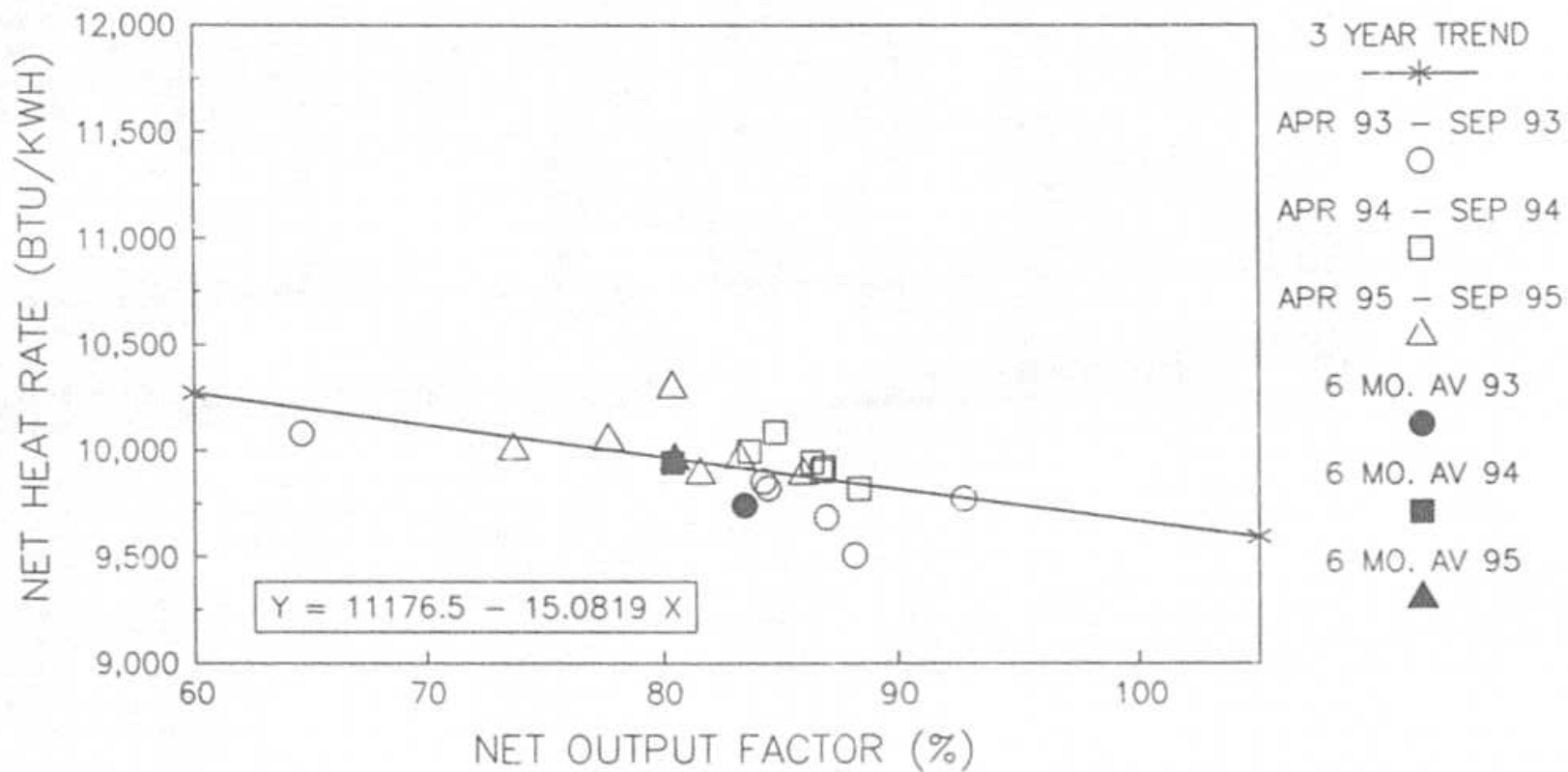


TARGET NET HEAT RATE: 10020
 TARGET NET OUTPUT FACTOR: 92.5

TAMPA ELECTRIC COMPANY

HEAT RATE VS. NET OUTPUT FACTOR

BIG BEND 3, SUMMER 1996

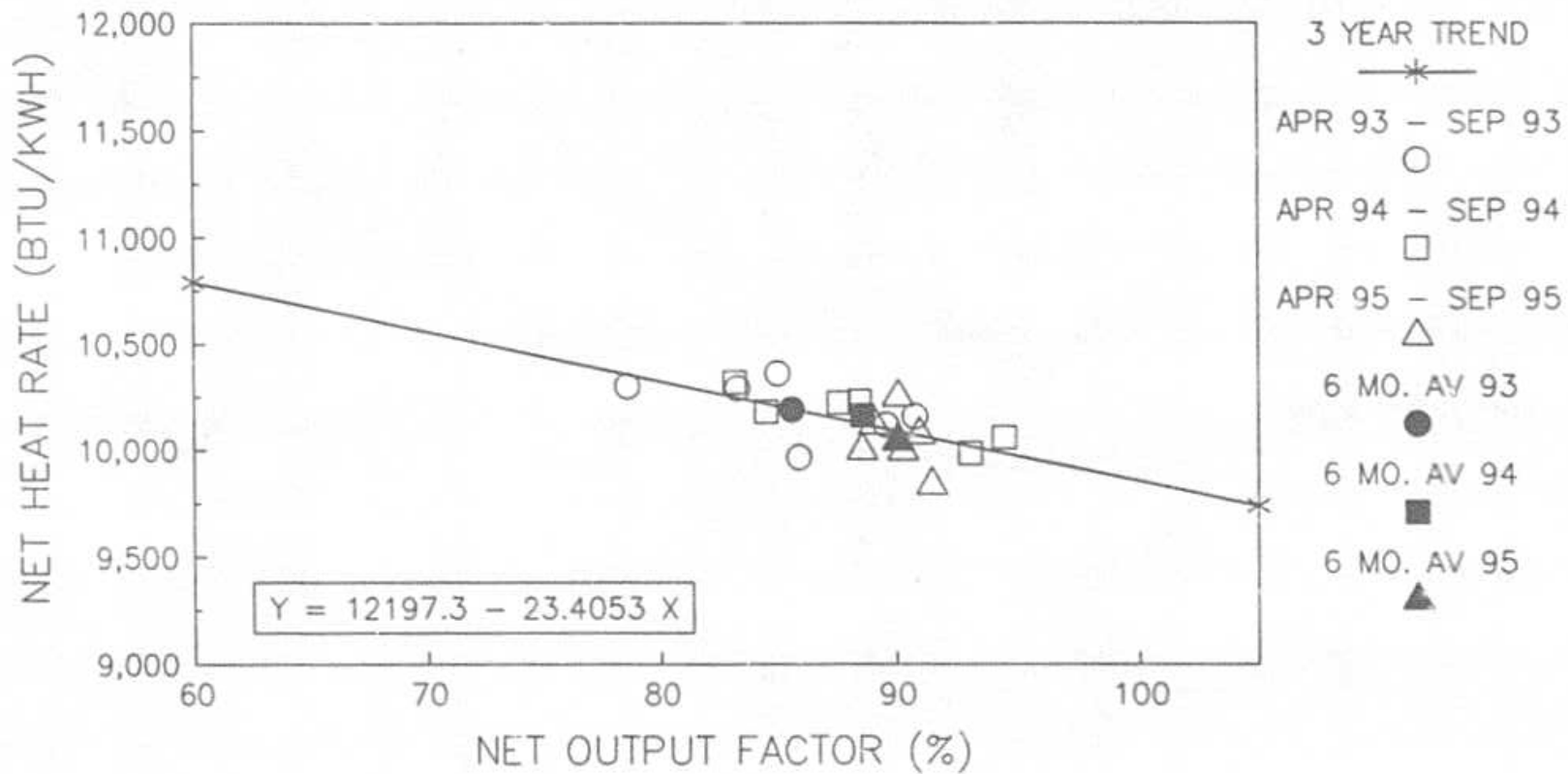


TARGET NET HEAT RATE: 9777
 TARGET NET OUTPUT FACTOR: 94.5

TAMPA ELECTRIC COMPANY

HEAT RATE VS. NET OUTPUT FACTOR

BIG BEND 4, SUMMER 1996



TARGET NET HEAT RATE: 10149
 TARGET NET OUTPUT FACTOR: 87.5

TAMPA ELECTRIC COMPANY
TABLE 4.2
GENERATING UNITS IN GPIF
APRIL 1996 - SEPTEMBER 1996

UNIT	MDC GROSS (MW)	NDC NET (MW)
GANNON 5	240	227
GANNON 6	375	362
BIG BEND 1	435	421
BIG BEND 2	435	421
BIG BEND 3	445	430
BIG BEND 4	470	442
TOTAL	2400	2303
SYSTEM TOTAL	3423	3283
% OF SYSTEM TOTAL	70.11%	70.15%

TAMPA ELECTRIC COMPANY
UNITS RATINGS
APRIL 1996 - SEPTEMBER 1996

UNIT	MDC GROSS (MW)	NDC NET (MW)
HOOKERS POINT 1	33	32
HOOKERS POINT 2	33	32
HOOKERS POINT 3	33	32
HOOKERS POINT 4	43	41
HOOKERS POINT 5	70	67
HOOKERS TOTAL	212	204
GANNON 1	125	115
GANNON 2	125	119
GANNON 3	165	155
GANNON 4	200	189
GANNON 5	240	227
GANNON 6	375	362
GANNON TOTAL	1230	1171
BIG BEND 1	435	421
BIG BEND 2	435	421
BIG BEND 3	445	430
BIG BEND 4	470	442
BIG BEND TOTAL	1785	1714
GANNON CT	15	15
BIG BEND CT1	15	15
BIG BEND CT2	65	65
BIG BEND CT3	65	65
CT TOTAL	160	160
PHILLIPS 1	18	17
PHILLIPS 2	18	17
PHILLIPS TOTAL	36	34
SYSTEM TOTAL	3423	3283

TAMPA ELECTRIC COMPANY
PERCENT GENERATION BY UNIT
APRIL 1996 - SEPTEMBER 1996

STATION	UNIT	NET OUTPUT MWH	% OF PROJECTED OUTPUT	% CUMULATIVE PROJECTED OUTPUT
BIG BEND	3	1,623,280	17.84%	17.84%
BIG BEND	4	1,577,228	17.34%	35.18%
BIG BEND	1	1,550,512	17.04%	52.23%
BIG BEND	2	1,540,446	16.93%	69.16%
GANNON	6	857,761	9.43%	78.59%
GANNON	5	746,221	8.20%	86.79%
GANNON	4	444,182	4.88%	91.67%
GANNON	3	265,030	2.91%	94.59%
GANNON	1	222,710	2.45%	97.03%
GANNON	2	178,821	1.97%	99.00%
HOOKE'S POINT	5	38,212	0.42%	99.42%
HOOKE'S POINT	4	8,032	0.09%	99.51%
HOOKE'S POINT	1	7,092	0.08%	99.59%
HOOKE'S POINT	3	6,887	0.08%	99.66%
HOOKE'S POINT	2	6,426	0.07%	99.73%
PHILLIPS	1	6,065	0.07%	99.80%
PHILLIPS	2	5,900	0.06%	99.86%
BIG BEND CT	3	5,830	0.06%	99.93%
BIG BEND CT	2	4,665	0.05%	99.98%
BIG BEND CT	1	934	0.01%	99.99%
GANNON CT	1	892	0.01%	100.00%

TOTAL GENERATION 9,097,128 100.00%

GENERATION BY COAL UNITS: 9,006,191 MWH

% GENERATION BY COAL UNITS: 99.00%

GENERATION BY OIL UNITS: 90,935 MWH

% GENERATION BY OIL UNITS: 1.00%

GENERATION BY GPIF UNITS: 7,895,448 MWH

% GENERATION BY GPIF UNITS: 86.79%

TAMPA ELECTRIC COMPANY

ESTIMATED UNIT PERFORMANCE DATA

APRIL 1998 - SEPTEMBER 1998

PLANT/UNIT	MONTH OF:	MONTH OF:	MONTH OF:	MONTH OF:	MONTH OF:	MONTH OF:	PERIOD
BIG BEND 1	APR 98	MAY 98	JUN 98	JUL 98	AUG 98	SEP 98	SUMMER 1998
1. EAF (%)	86.6	86.7	86.7	86.7	86.7	86.7	86.7
2. POF	0.0	0.0	0.0	0.0	0.0	0.0	0.0
3. EUOF	13.4	13.3	13.3	13.3	13.3	13.3	13.3
4. EUOR	13.4	13.3	13.3	13.3	13.3	13.3	13.3
5. PH	719	744	720	744	744	720	4391
6. SH	658	679	657	679	679	657	4009
7. RSH	0	0	0	0	0	0	0
8. UH	61	65	63	65	65	63	382
9. POH	0	0	0	0	0	0	0
10. FOH & EFOH	67	69	67	69	69	67	408
11. MOH & EMOH	29	30	29	30	30	29	177
12. OPER BTU (GBTU)	2522.548	2611.087	2585.981	2670.772	2679.077	2575.249	15624.874
13. NET GEN (MWH)	252488	260051	255000	263169	263949	255877	1550512
14. ANOHR (BTU/KWH)	9992	10041	10083	10149	10150	10084	10077
15. NOF (%)	91.1	91.0	92.2	92.1	92.3	92.5	91.9
16. NSC (MW)	421	421	421	421	421	421	421
17. ANOHR EQUATION	ANOHR = NOF(-11.4243) + 11127.0						

FILED:
SUSPENDED:
EFFECTIVE: 04/01/98
DOCKET NO. : 980001-EI
ORDER NO.:

TAMPA ELECTRIC COMPANY

ESTIMATED UNIT PERFORMANCE DATA

APRIL 1996 - SEPTEMBER 1996

PLANT/UNIT	MONTH OF:	MONTH OF:	MONTH OF:	MONTH OF:	MONTH OF:	MONTH OF:	PERIOD
BIG BEND 2	APR 96	MAY 96	JUN 96	JUL 96	AUG 96	SEP 96	SUMMER 1996
1. EAF (%)	86.0	85.9	86.0	85.9	85.9	86.0	85.9
2. POF	0.0	0.0	0.0	0.0	0.0	0.0	0.0
3. EUOF	14.0	14.1	14.0	14.1	14.1	14.0	14.1
4. EUOR	14.0	14.1	14.0	14.1	14.1	14.0	14.1
5. PH	719	744	720	744	744	720	4391
6. SH	649	670	649	670	670	649	3957
7. RSH	0	0	0	0	0	0	0
8. UH	70	74	71	74	74	71	434
9. POH	0	0	0	0	0	0	0
10. FOH & EFOH	81	84	81	84	84	81	495
11. MOH & EMOH	20	21	20	21	21	20	123
12. OPER BTU (GBTU)	2499.451	2588.155	2532.189	2632.388	2638.715	2543.713	15434.591
13. NET GEN (MWH)	250745	259098	252757	261676	262292	253878	1540448
14. ANOHR (BTU/KWH)	9988	9989	10018	10060	10060	10019	10020
15. NOF (%)	91.8	91.9	92.5	92.8	93.0	92.9	92.5
16. NSC (MW)	421	421	421	421	421	421	421
17. ANOHR EQUATION	ANOHR = NOF(-14.7260) + 11391.9						

FILED:
SUSPENDED:
EFFECTIVE: 04/01/96
DOCKET NO. : 960001-EI
ORDER NO.:

TAMPA ELECTRIC COMPANY

ESTIMATED UNIT PERFORMANCE DATA

APRIL 1996 - SEPTEMBER 1996

PLANT/UNIT	MONTH OF:	MONTH OF:	MONTH OF:	MONTH OF:	MONTH OF:	MONTH OF:	PERIOD
BIG BEND 3 FADJ	APR 96	MAY 96	JUN 96	JUL 96	AUG 96	SEP 96	SUMMER 1996
1. EAF (%)	87.1	87.1	87.1	87.1	87.1	87.1	87.1
2. POF	0.0	0.0	0.0	0.0	0.0	0.0	0.0
3. EUOF	12.9	12.9	12.9	12.9	12.9	12.9	12.9
4. EUOR	12.9	12.9	12.9	12.9	12.9	12.9	12.9
5. PH	719	744	720	744	744	720	4391
6. SH	655	677	655	677	677	655	3996
7. RSH	0	0	0	0	0	0	0
8. UH	64	67	65	67	67	65	395
9. POH	0	0	0	0	0	0	0
10. FOH & EFOH	64	66	64	66	66	64	390
11. MOH & EMOH	29	30	29	30	30	29	177
12. OPER BTU (GBTU)	2495.816	2598.814	2611.338	2743.630	2758.957	2681.508	15870.061
13. NET GEN (MWH)	253812	263077	262484	273335	274829	267703	1595220
14. ANOHR (BTU/KWH)	9833	9879	9949	10038	10039	9942	9949
15. NOF (%)	90.1	90.4	93.2	93.9	94.4	95.0	92.8
16. NSC (MW)	430	430	430	430	430	430	430
17. ANOHR EQUATION	ANOHR = NOF(-15.5958) + 11385.8						

FILED:
SUSPENDED:
EFFECTIVE: 04/01/96
DOCKET NO. : 960001-EI
ORDER NO.:

TAMPA ELECTRIC COMPANY

ACTUAL UNIT PERFORMANCE DATA

APRIL 1996 - SEPTEMBER 1996

PLANT/UNIT	MONTH OF:	MONTH OF:	MONTH OF:	MONTH OF:	MONTH OF:	MONTH OF:	PERIOD
BIG BEND 4	APR 96	MAY 96	JUN 96	JUL 96	AUG 96	SEP 96	SUMMER 1996
1. EAF (%)	89.7	89.7	89.7	89.7	89.7	89.7	89.7
2. POF	0.0	0.0	0.0	0.0	0.0	0.0	0.0
3. EUOF	10.3	10.3	10.3	10.3	10.3	10.3	10.3
4. EUOR	10.3	10.3	10.3	10.3	10.3	10.3	10.3
5. PH	719	744	720	744	744	720	4391
6. SH	673	696	673	696	696	673	4107
7. RSH	0	0	0	0	0	0	0
8. UH	46	48	47	48	48	47	284
9. POH	0	0	0	0	0	0	0
10. FOH & EFOH	37	38	37	38	38	37	225
11. MOH & EMOH	37	39	37	39	39	37	228
12. OPER BTU (GBTU)	2537.445	2549.977	2612.314	2786.379	2842.660	2699.043	16007.818
13. NET GEN (MWH)	251686	252039	257078	270864	279100	268481	1577228
14. ANOHR (BTU/KWH)	10082	10117	10182	10213	10185	10129	10149
15. NOF (%)	85.2	82.5	87.0	88.6	91.3	90.2	87.5
16. NSC (MW)	439	439	439	439	439	439	439
17. ANOHR EQUATION	ANOHR = NOF(-23.4053) + 12197.3						

FILED:
SUSPENDED:
EFFECTIVE: 04/01/96
DOCKET NO. : 960001-EI
ORDER NO.:

TAMPA ELECTRIC COMPANY

ESTIMATED UNIT PERFORMANCE DATA

APRIL 1996 - SEPTEMBER 1996

PLANT/UNIT	MONTH OF:	MONTH OF:	MONTH OF:	MONTH OF:	MONTH OF:	MONTH OF:	PERIOD
GANNON 1	APR 96	MAY 96	JUN 96	JUL 96	AUG 96	SEP 96	SUMMER 1996
1. EAF (%)	91.1	91.0	91.0	91.0	29.3	91.0	80.6
2. POF	0.0	0.0	0.0	0.0	67.7	0.0	11.5
3. EUOF	8.9	9.0	9.0	9.0	3.0	9.0	8.0
4. EUOR	8.9	9.0	9.0	9.0	9.2	9.0	9.0
5. PH	719	744	720	744	744	720	4391
6. SH	344	348	399	412	149	409	2091
7. RSH	0	0	0	0	0	0	0
8. UH	375	398	321	332	595	311	2330
9. POH	0	0	0	0	504	0	504
10. FOH & EFOH	47	49	48	49	16	48	257
11. MOH & EMOH	17	18	17	18	8	17	93
12. OPER BTU (GBTU)	411,179	421,235	490,737	510,335	187,390	493,786	2514,662
13. NET GEN (MWH)	36572	37494	43431	44922	16521	43770	222710
14. ANOHR (BTU/KWH)	11243	11235	11299	11360	11343	11281	11291
15. NOF (%)	89.3	90.5	91.5	91.6	93.2	89.9	90.8
16. NSC (MW)	119	119	119	119	119	119	119

FILED:
SUSPENDED:
EFFECTIVE: 04/01/96
DOCKET NO. : 960001-EI
ORDER NO.:

TAMPA ELECTRIC COMPANY

ESTIMATED UNIT PERFORMANCE DATA

APRIL 1996 - SEPTEMBER 1996

PLANT/UNIT	MONTH OF:	MONTH OF:	MONTH OF:	MONTH OF:	MONTH OF:	MONTH OF:	PERIOD
GANNON 2	APR 96	MAY 96	JUN 96	JUL 96	AUG 96	SEP 96	SUMMER 1996
1. EAF (%)	87.2	87.2	5.8	47.8	87.2	87.2	87.2
2. POF	0.0	0.0	83.3	45.2	0.0	0.0	23.0
3. EUOF	12.8	12.8	0.8	7.0	12.8	12.8	9.8
4. EUOR	12.8	12.8	12.5	12.7	12.8	12.8	12.8
5. PH	719	744	720	744	744	720	4391
6. SH	332	309	21	192	459	400	1713
7. RSH	0	0	0	0	0	0	0
8. UH	387	435	699	552	285	320	2678
9. POH	0	0	672	336	0	0	1008
10. FOH & EFOH	60	62	4	34	62	60	262
11. MOH & EMOH	32	33	2	18	33	32	150
12. OPER BTU (GBTU)	380.088	377.782	27.456	241.547	565.881	471.135	2063.869
13. NET GEN (MWH)	33703	33184	2378	20816	48241	40699	178821
14. ANOHR (BTU/KWH)	11278	11384	11546	11715	11730	11576	11542
15. NOF (%)	85.3	90.2	95.2	90.2	88.3	85.5	87.7
16. NSC (MW)	119	119	119	119	119	119	119

FILED:
SUSPENDED:
EFFECTIVE: 04/01/96
DOCKET NO. : 980001-EI
ORDER NO.:

TAMPA ELECTRIC COMPANY

ESTIMATED UNIT PERFORMANCE DATA

APRIL 1996 - SEPTEMBER 1996

PLANT/UNIT	MONTH OF:	MONTH OF:	MONTH OF:	MONTH OF:	MONTH OF:	MONTH OF:	PERIOD
GANNON 3	APR 96	MAY 96	JUN 96	JUL 96	AUG 96	SEP 96	SUMMER 1996
1. EAF (%)	84.7	84.7	84.6	84.7	88.3	0.0	68.0
2. POF	0.0	0.0	0.0	0.0	19.4	100.0	19.7
3. EUOF	15.3	15.3	15.4	15.3	12.4	0.0	12.3
4. EUOR	15.3	15.3	15.4	15.3	15.3	0.0	15.3
5. PH	719	744	720	744	744	720	4391
6. SH	361	330	362	427	379	0	1879
7. RSH	0	0	0	0	0	0	0
8. UH	358	414	338	317	365	720	2512
9. POH	0	0	0	0	144	720	864
10. FOH & EFOH	35	36	35	36	29	0	171
11. MOH & EMOH	75	78	76	78	63	0	370
12. OPER BTU (GBTU)	556.081	513.580	608.849	673.223	610.385	0.000	2960.098
13. NET GEN (MWH)	50294	46123	54300	59654	54359	0	265030
14. ANOHR (BTU/KWH)	11056	11135	11178	11229	11229	0	11169
15. NOF (%)	89.9	90.2	91.7	90.6	92.5	0.0	91.0
16. NSC (MW)	155	155	155	155	155	155	155

FILED:
 SUSPENDED:
 EFFECTIVE: 04/01/96
 DOCKET NO. : 960001-EI
 ORDER NO.:

TAMPA ELECTRIC COMPANY

ESTIMATED UNIT PERFORMANCE DATA

APRIL 1996 - SEPTEMBER 1996

PLANT/UNIT	MONTH OF:	MONTH OF:	MONTH OF:	MONTH OF:	MONTH OF:	MONTH OF:	PERIOD
GANNON 4	APR 96	MAY 96	JUN 96	JUL 96	AUG 96	SEP 96	SUMMER 1996
1. EAF (%)	86.9	86.8	86.8	86.8	86.8	86.8	86.8
2. POF	0.0	0.0	0.0	0.0	0.0	0.0	0.0
3. EUOF	13.1	13.2	13.2	13.2	13.2	13.2	13.2
4. EUOR	13.1	13.2	13.2	13.2	13.2	13.2	13.2
5. PH	719	744	720	744	744	720	4391
6. SH	383	383	422	467	505	443	2803
7. RSH	0	0	0	0	0	0	0
8. UH	338	361	298	277	239	277	1788
9. POH	0	0	0	0	0	0	0
10. FOH & EFOH	75	78	76	78	78	76	461
11. MOH & EMOH	19	20	19	20	20	19	117
12. OPER BTU (GBTU)	683.483	673.470	777.991	865.767	942.690	801.077	4744.478
13. NET GEN (MWH)	64701	63215	72779	80724	87904	74859	444182
14. ANOHR (BTU/KWH)	10564	10854	10890	10725	10724	10701	10681
15. NOF (%)	89.4	87.3	91.2	91.5	92.1	89.4	90.3
16. NSC (MW)	189	189	189	189	189	189	189

FILED:
SUSPENDED:
EFFECTIVE: 04/01/96
DOCKET NO. : 960001-EI
ORDER NO.:

TAMPA ELECTRIC COMPANY

ESTIMATED UNIT PERFORMANCE DATA

APRIL 1996 - SEPTEMBER 1996

PLANT/UNIT	MONTH OF:	MONTH OF:	MONTH OF:	MONTH OF:	MONTH OF:	MONTH OF:	PERIOD
GANNON 5	APR 96	MAY 96	JUN 96	JUL 96	AUG 96	SEP 96	SUMMER 1996
1. EAF (%)	90.4	90.5	90.4	90.5	90.5	90.4	90.4
2. POF	0.0	0.0	0.0	0.0	0.0	0.0	0.0
3. EUOF	9.6	9.5	9.6	9.5	9.5	9.6	9.6
4. EUOR	9.6	9.5	9.6	9.5	9.5	9.6	9.6
5. PH	719	744	720	744	744	720	4391
6. SH	685	707	685	707	707	685	4176
7. RSH	0	0	0	0	0	0	0
8. UH	34	37	35	37	37	35	215
9. POH	0	0	0	0	0	0	0
10. FOH & EFOH	61	63	61	63	63	61	372
11. MOH & EMOH	8	8	8	8	8	8	48
12. OPER BTU (GBTU)	1165.213	1198.644	1264.804	1369.509	1412.075	1307.961	7718.206
13. NET GEN (MWH)	113846	118125	122277	131314	135781	129878	746221
14. ANOHR (BTU/KWH)	10235	10322	10344	10429	10400	10309	10343
15. NOF (%)	73.2	72.4	78.6	81.8	84.6	81.6	78.7
16. NSC (MW)	227	227	227	227	227	227	227
17. ANOHR EQUATION	ANOHR = NOF(-14.2064) + 11461.1						

FILED:
SUSPENDED:
EFFECTIVE: 04/01/96
DOCKET NO. : 960001-EI
ORDER NO.:

TAMPA ELECTRIC COMPANY

ESTIMATED UNIT PERFORMANCE DATA

APRIL 1996 - SEPTEMBER 1996

PLANT/UNIT	MONTH OF:	MONTH OF:	MONTH OF:	MONTH OF:	MONTH OF:	MONTH OF:	PERIOD
GANNON 6	APR 96	MAY 96	JUN 96	JUL 96	AUG 96	SEP 96	SUMMER 1996
1. EAF (%)	0.0	31.8	89.1	89.1	89.1	89.1	64.8
2. POF	100.0	64.5	0.0	0.0	0.0	0.0	27.3
3. EUOF	0.0	3.9	10.9	10.9	10.9	10.9	7.9
4. EUOR	0.0	10.9	10.9	10.9	10.9	10.9	10.9
5. PH	719	744	720	744	744	720	4391
6. SH	0	252	686	709	709	686	3042
7. RSH	0	0	0	0	0	0	0
8. UH	719	492	34	35	35	34	1349
9. POH	719	480	0	0	0	0	1199
10. FOH & EFOH	0	21	58	60	60	58	255
11. MOH & EMOH	0	8	21	22	22	21	93
12. OPER BTU (GBTU)	0.000	669.220	1988.629	2110.243	2182.504	2027.366	8957.962
13. NET GEN (MWH)	0	64004	186725	201311	206838	194883	857761
14. ANOHR (BTU/KWH)	0	10458	10431	10483	10451	10403	10443
15. NOF (%)	0.0	70.2	76.0	78.4	81.4	78.5	77.9
16. NSC (MW)	362	362	362	362	362	362	362
17. ANOHR EQUATION	ANOHR = NOF(2.5690) + 10243.3						

FILED:
SUSPENDED:
EFFECTIVE: 04/01/96
DOCKET NO. : 960001-EI
ORDER NO.:

TAMPA ELECTRIC COMPANY

ESTIMATED UNIT PERFORMANCE DATA

APRIL 1996 - SEPTEMBER 1996

PLANT/UNIT	MONTH OF:	MONTH OF:	MONTH OF:	MONTH OF:	MONTH OF:	MONTH OF:	PERIOD
HOOKERS PT 1	APR 96	MAY 96	JUN 96	JUL 96	AUG 96	SEP 96	SUMMER 1996
1. EAF (%)	94.3	94.4	94.3	94.4	94.4	94.3	94.3
2. POF	0.0	0.0	0.0	0.0	0.0	0.0	0.0
3. EUOF	5.7	5.6	5.7	5.6	5.6	5.7	5.7
4. EUOR	5.7	5.6	5.7	5.6	5.6	5.7	5.7
5. PH	719	744	720	744	744	720	4391
6. SH	32	26	44	43	52	37	234
7. RSH	0	0	0	0	0	0	0
8. UH	687	718	676	701	692	683	4157
9. POH	0	0	0	0	0	0	0
10. FOH & EFOH	33	34	33	34	34	33	201
11. MOH & EMOH	8	8	8	8	8	8	48
12. OPER BTU (GBTU)	17,135	12,723	21,336	21,420	25,797	17,804	116,215
13. NET GEN (MWH)	1016	783	1317	1305	1572	1099	7062
14. ANCHR (BTU/KWH)	16865	16249	16200	16414	16410	16200	16387
15. NOF (%)	99.2	94.1	93.5	94.8	94.5	92.8	94.7
16. NSC (MW)	32	32	32	32	32	32	32

FILED:
SUSPENDED:
EFFECTIVE: 04/01/96
DOCKET NO. : 960001-EI
ORDER NO.:

TAMPA ELECTRIC COMPANY

ESTIMATED UNIT PERFORMANCE DATA

APRIL 1996 - SEPTEMBER 1996

PLANT/UNIT	MONTH OF:	MONTH OF:	MONTH OF:	MONTH OF:	MONTH OF:	MONTH OF:	PERIOD
HOOKERS PT 2	APR 96	MAY 96	JUN 96	JUL 96	AUG 96	SEP 96	SUMMER 1996
1. EAF (%)	94.3	94.4	94.3	94.4	94.4	94.3	94.3
2. POF	0.0	0.0	0.0	0.0	0.0	0.0	0.0
3. EUOF	5.7	5.8	5.7	5.6	5.8	5.7	5.7
4. EUOR	5.7	5.8	5.7	5.6	5.8	5.7	5.7
5. PH	719	744	720	744	744	720	4391
6. SH	37	19	39	39	47	32	213
7. RSH	0	0	0	0	0	0	0
8. UH	682	725	681	705	697	688	4178
9. POH	0	0	0	0	0	0	0
10. FOH & EFOH	33	34	33	34	34	33	201
11. MOH & EMOH	8	8	8	8	8	8	48
12. OPER BTU (GBTU)	19,493	9,365	19,066	18,952	22,878	15,697	105,451
13. NET GEN (MWH)	1167	577	1169	1155	1395	963	6428
14. ANOHR (BTU/KWH)	16704	16231	16310	16409	16400	16300	16410
15. NOF (%)	96.6	94.9	93.7	92.5	92.8	94.0	94.3
16. NSC (MW)	32	32	32	32	32	32	32

FILED:
SUSPENDED:
EFFECTIVE: 04/01/96
DOCKET NO. : 960001-EI
ORDER NO.:

TAMPA ELECTRIC COMPANY

ESTIMATED UNIT PERFORMANCE DATA

APRIL 1996 - SEPTEMBER 1996

PLANT/UNIT	MONTH OF:	MONTH OF:	MONTH OF:	MONTH OF:	MONTH OF:	MONTH OF:	PERIOD
HOOKERS PT 3	APR 96	MAY 96	JUN 96	JUL 96	AUG 96	SEP 96	SUMMER 1996
1. EAF (%)	94.3	94.4	94.3	94.4	94.4	94.3	94.3
2. POF	0.0	0.0	0.0	0.0	0.0	0.0	0.0
3. EUOF	5.7	5.6	5.7	5.6	5.6	5.7	5.7
4. EUOR	5.7	5.6	5.7	5.6	5.6	5.7	5.7
5. PH	719	744	720	744	744	720	4391
6. SH	42	30	49	29	35	42	227
7. RSH	0	0	0	0	0	0	0
8. UH	677	714	671	715	709	678	4164
9. POH	0	0	0	0	0	0	0
10. FOH & EFOH	33	34	33	34	34	33	201
11. MOH & EMOH	8	8	8	8	8	8	48
12. OPER BTU (GBTU)	21,908	14,336	23,954	14,541	17,768	20,267	112,862
13. NET GEN (MWH)	1337	864	1479	867	1059	1251	6887
14. ANOHR (BTU/KWH)	16453	16036	16196	16772	16776	16201	16388
15. NOF (%)	99.5	93.1	94.3	93.4	94.6	93.1	94.8
16. NSC (MW)	32	32	32	32	32	32	32

FILED:
SUSPENDED:
EFFECTIVE: 04/01/96
DOCKET NO. : 960001-E1
ORDER NO.:

TAMPA ELECTRIC COMPANY

ESTIMATED UNIT PERFORMANCE DATA

APRIL 1996 - SEPTEMBER 1996

PLANT/UNIT	MONTH OF:	MONTH OF:	MONTH OF:	MONTH OF:	MONTH OF:	MONTH OF:	PERIOD
HOOKERS PT 4	APR 96	MAY 96	JUN 96	JUL 96	AUG 96	SEP 96	SUMMER 1996
1. EAF (%)	94.3	94.4	94.3	94.4	94.4	94.3	94.3
2. POF	0.0	0.0	0.0	0.0	0.0	0.0	0.0
3. EUOF	5.7	5.6	5.7	5.6	5.6	5.7	5.7
4. EUOR	5.7	5.6	5.7	5.6	5.6	5.7	5.7
5. PH	719	744	720	744	744	720	4391
6. SH	50	23	35	34	41	26	211
7. RSH	0	0	0	0	0	0	0
8. UH	669	721	685	710	703	692	4180
9. POH	0	0	0	0	0	0	0
10. FOH & EFOH	33	34	33	34	34	33	201
11. MOH & EMOH	8	8	8	8	8	8	48
12. OPER BTU (GBTU)	31,944	14,003	21,392	21,406	25,971	17,441	132,159
13. NET GEN (MWH)	1967	865	1299	1285	1559	1059	8032
14. ANOHR (BTU/KWH)	16240	16226	16468	16690	16659	16499	16454
15. NOF (%)	98.0	91.5	90.5	92.2	92.7	92.2	92.8
16. NSC (MW)	41	41	41	41	41	41	41

FILED:
 SUSPENDED:
 EFFECTIVE: 04/01/96
 DOCKET NO. : 980001-EI
 ORDER NO.:

TAMPA ELECTRIC COMPANY

ESTIMATED UNIT PERFORMANCE DATA

APRIL 1996 - SEPTEMBER 1996

PLANT/UNIT	MONTH OF:	MONTH OF:	MONTH OF:	MONTH OF:	MONTH OF:	MONTH OF:	PERIOD
HOOKERS PT 5	APR 96	MAY 96	JUN 96	JUL 96	AUG 96	SEP 96	SUMMER 1996
1. EAF (%)	76.4	76.5	76.4	76.5	76.5	76.4	76.4
2. POF	0.0	0.0	0.0	0.0	0.0	0.0	0.0
3. EUOF	23.6	23.5	23.6	23.5	23.5	23.6	23.6
4. EUOR	23.6	23.5	23.6	23.5	23.5	23.6	23.6
5. PH	719	744	720	744	744	720	4391
6. SH	51	274	269	276	282	43	1195
7. RSH	0	0	0	0	0	0	0
8. UH	668	470	451	468	462	677	3198
9. POH	0	0	0	0	0	0	0
10. FOH & EFOH	136	140	136	140	140	136	628
11. MOH & EMOH	34	35	34	35	35	34	207
12. OPER BTU (GBTU)	43,217	133,300	142,004	139,587	146,033	36,579	640,730
13. NET GEN (MWH)	3048	7729	8421	7999	8462	2553	38212
14. ANOHR (BTU/KWH)	14179	17247	16863	17452	17258	14328	16768
15. NOF (%)	69.2	42.1	46.7	43.3	44.8	88.6	47.7
16. NSC (MW)	67	67	67	67	67	67	67

FILED:
 SUSPENDED:
 EFFECTIVE: 04/01/96
 DOCKET NO. : 960001-EI
 ORDER NO.:

TAMPA ELECTRIC COMPANY
 ESTIMATED UNIT PERFORMANCE DATA
 APRIL 1996 - SEPTEMBER 1996

PLANT/UNIT	MONTH OF:	MONTH OF:	MONTH OF:	MONTH OF:	MONTH OF:	MONTH OF:	PERIOD
	APR 96	MAY 96	JUN 96	JUL 96	AUG 96	SEP 96	SUMMER 1996
1. EAF (%)	65.0	64.9	65.0	64.9	64.9	65.0	65.0
2. POF	0.0	0.0	0.0	0.0	0.0	0.0	0.0
3. EUOF	35.0	35.1	35.0	35.1	35.1	35.0	35.0
4. EUOR	35.0	35.1	35.0	35.1	35.1	35.0	35.0
5. PH	719	744	720	744	744	720	4391
6. SH	13	8	11	10	12	10	62
7. RSH	0	0	0	0	0	0	0
8. UH	706	738	709	734	732	710	4329
9. POH	0	0	0	0	0	0	0
10. FOH & EFOH	144	149	144	149	149	144	679
11. MOH & EMOH	108	112	108	112	112	108	660
12. OPER BTU (GBTU)	3.816	1.767	3.260	2.717	3.326	2.968	17.854
13. NET GEN (MWH)	191	88	163	136	166	148	892
14. ANOHR (BTU/KWH)	19979	20080	20000	19978	20036	20054	20016
15. NOF (%)	97.9	97.8	96.8	90.7	92.2	96.7	95.9
16. HSC (MW)	15	15	15	15	15	15	15

FILED:
 SUSPENDED:
 EFFECTIVE: 04/01/96
 DOCKET NO. : 960001-EI
 ORDER NO.:

TAMPA ELECTRIC COMPANY

ESTIMATED UNIT PERFORMANCE DATA

APRIL 1996 - SEPTEMBER 1996

PLANT/UNIT	MONTH OF:	MONTH OF:	MONTH OF:	MONTH OF:	MONTH OF:	MONTH OF:	PERIOD
BIG BEND CT1	APR 96	MAY 96	JUN 96	JUL 96	AUG 96	SEP 96	SUMMER 1996
1. EAF (%)	65.0	39.9	60.7	64.9	64.9	65.0	60.0
2. POF	0.0	38.7	6.7	0.0	0.0	0.0	7.7
3. EUOF	35.0	21.4	32.6	35.1	35.1	35.0	32.3
4. EUOR	35.0	34.9	35.0	35.1	35.1	35.0	35.0
5. PH	719	744	720	744	744	720	4391
6. SH	15	4	12	11	13	11	68
7. RSH	0	0	0	0	0	0	0
8. UH	704	740	708	733	731	709	4325
9. POH	0	288	48	0	0	0	336
10. FOH & EFOH	144	91	134	149	149	144	811
11. MOH & EMOH	108	68	101	112	112	108	609
12. OPER BTU (GBTU)	3,956	1,049	3,276	2,830	3,457	3,081	17,649
13. NET GEN (MWH)	209	56	173	150	183	183	934
14. ANOHR (BTU/KWH)	18928	18732	18936	18867	18891	18902	18896
15. NOF (%)	92.9	93.3	96.1	90.9	93.8	98.8	94.3
16. NSC (MW)	15	15	15	15	15	15	15

FILED:
SUSPENDED:
EFFECTIVE: 04/01/96
DOCKET NO. : 960001-E1
ORDER NO.:

TAMPA ELECTRIC COMPANY

ESTIMATED UNIT PERFORMANCE DATA

APRIL 1996 - SEPTEMBER 1996

PLANT/UNIT	MONTH OF:	MONTH OF:	MONTH OF:	MONTH OF:	MONTH OF:	MONTH OF:	PERIOD
BIG BEND CT2	APR 96	MAY 96	JUN 96	JUL 96	AUG 96	SEP 96	SUMMER 1996
1. EAF (%)	69.1	69.1	69.2	69.1	69.1	69.2	69.1
2. POF	0.0	0.0	0.0	0.0	0.0	0.0	0.0
3. EUOF	30.9	30.9	30.8	30.9	30.9	30.8	30.9
4. EUOR	30.9	30.9	30.8	30.9	30.9	30.8	30.9
5. PH	719	744	720	744	744	720	4391
6. SH	19	9	16	14	17	15	90
7. RSH	0	0	0	0	0	0	0
8. UH	700	735	704	730	727	705	4301
9. POH	0	0	0	0	0	0	0
10. FOH & EFOH	111	115	111	115	115	111	678
11. MOH & EMOH	111	115	111	115	115	111	678
12. OPER BTU (GBTU)	16,781	7,772	14,218	12,097	14,612	13,097	78,577
13. NET GEN (MWH)	998	460	845	717	867	778	4665
14. ANOHR (BTU/KWH)	16815	16896	16826	16872	16854	16834	16844
15. NOF (%)	80.8	78.6	81.3	78.8	78.5	79.8	79.7
16. NSC (MW)	65	65	65	65	65	65	65

FILED:
SUSPENDED:
EFFECTIVE: 04/01/96
DOCKET NO. : 960001-EI
ORDER NO.:

TAMPA ELECTRIC COMPANY

ESTIMATED UNIT PERFORMANCE DATA

APRIL 1996 - SEPTEMBER 1996

PLANT/UNIT	MONTH OF:	MONTH OF:	MONTH OF:	MONTH OF:	MONTH OF:	MONTH OF:	PERIOD
BIG BEND CT3	APR 96	MAY 96	JUN 96	JUL 96	AUG 96	SEP 96	SUMMER 1996
1. EAF (%)	69.1	69.1	69.2	69.1	69.1	69.2	69.1
2. POF	0.0	0.0	0.0	0.0	0.0	0.0	0.0
3. EUOF	30.9	30.9	30.8	30.9	30.9	30.8	30.9
4. EUOR	30.9	30.9	30.8	30.9	30.9	30.8	30.9
5. PH	719	744	720	744	744	720	4391
6. SH	24	11	20	18	21	19	113
7. RSH	0	0	0	0	0	0	0
8. UH	695	733	700	726	723	701	4278
9. POH	0	0	0	0	0	0	0
10. FOH & EFOH	111	115	111	115	115	111	678
11. MOH & EMOH	111	115	111	115	115	111	678
12. OPER BTU (GBTU)	20.460	9.733	17.378	14.975	17.862	16.130	96.538
13. NET GEN (MWH)	1238	586	1049	904	1079	974	5830
14. ANOHR (BTU/KWH)	16527	16809	16566	16565	16554	16561	16569
15. NOF (%)	79.4	82.0	80.7	77.3	79.0	78.9	79.4
16. NSC (MW)	65	65	65	65	65	65	65

FILED:
SUSPENDED:
EFFECTIVE: 04/01/96
DOCKET NO. : 960001-EI
ORDER NO.:

TAMPA ELECTRIC COMPANY

ESTIMATED UNIT PERFORMANCE DATA

APRIL 1996 - SEPTEMBER 1996

PLANT/UNIT	MONTH OF:	MONTH OF:	MONTH OF:	MONTH OF:	MONTH OF:	MONTH OF:	PERIOD
PHILLIPS 1	APR 96	MAY 96	JUN 96	JUL 96	AUG 96	SEP 96	SUMMER 1996
1. EAF (%)	80.1	80.0	80.0	80.0	80.0	80.0	80.0
2. POF	0.0	0.0	0.0	0.0	0.0	0.0	0.0
3. EUOF	19.9	20.0	20.0	20.0	20.0	20.0	20.0
4. EUOR	19.9	20.0	20.0	20.0	20.0	20.0	20.0
5. PH	719	744	720	744	744	720	4391
6. SH	66	48	71	63	72	64	372
7. RSH	0	0	0	0	0	0	0
8. UH	653	698	649	681	672	696	4019
9. POH	0	0	0	0	0	0	0
10. FOH & EFOH	50	52	50	52	52	50	306
11. MOH & EMOH	93	97	94	97	97	94	572
12. OPER BTU (GBTU)	10.151	7.111	11.010	9.754	11.218	8.437	57.681
13. NET GEN (MWH)	1067	748	1158	1026	1179	887	6065
14. ANOHR (BTU/KWH)	9514	9507	9508	9507	9515	9512	9510
15. NOF (%)	95.1	95.7	95.9	95.8	96.3	96.6	95.9
16. NSC (MW)	17	17	17	17	17	17	17

FILED:
 SUSPENDED:
 EFFECTIVE: 04/01/96
 DOCKET NO. : 960001-EI
 ORDER NO.:

TAMPA ELECTRIC COMPANY

ESTIMATED UNIT PERFORMANCE DATA

APRIL 1996 - SEPTEMBER 1996

PLANT/UNIT	MONTH OF:	MONTH OF:	MONTH OF:	MONTH OF:	MONTH OF:	MONTH OF:	PERIOD
PHILLIPS 2	APR 96	MAY 96	JUN 96	JUL 96	AUG 96	SEP 96	SUMMER 1996
1. EAF (%)	80.1	80.0	80.0	80.0	80.0	80.0	80.0
2. POF	0.0	0.0	0.0	0.0	0.0	0.0	0.0
3. EUOF	19.9	20.0	20.0	20.0	20.0	20.0	20.0
4. EUOR	19.9	20.0	20.0	20.0	20.0	20.0	20.0
5. PH	719	744	720	744	744	720	4391
6. SH	64	45	69	61	70	53	362
7. RSH	0	0	0	0	0	0	0
8. UH	655	699	651	683	674	687	4029
9. POH	0	0	0	0	0	0	0
10. FOH & EFOH	50	52	50	52	52	50	306
11. MOH & EMOH	93	97	94	97	97	94	572
12. OPER BTU (GBTU)	9,926	6,968	10,802	9,572	11,023	8,251	56,540
13. NET GEN (MWH)	1036	727	1127	999	1150	861	5900
14. ANOHR (BTU/KWH)	9581	9582	9585	9582	9585	9583	9583
15. NOF (%)	95.2	95.0	96.1	96.3	96.6	95.8	95.9
16. NSC (MW)	17	17	17	17	17	17	17

FILED:
SUSPENDED:
EFFECTIVE: 04/01/96
DOCKET NO. : 960001-EI
ORDER NO.: