

STEEL
HECTOR
& DAVIS

REGISTERED LIMITED LIABILITY PARTNERSHIP

ORIGINAL

Steel Hector & Davis LLP
215 South Monroe, Suite 601
Tallahassee, Florida 32301-1804
850 222 2300
850 222 8410 Fax
www.steelhector.com

Matthew M. Childs, P.A.

October 5, 1998

Blanca S. Bayó Director
Division of Records and Reporting
Florida Public Service Commission
4075 Esplanade Way, Room 110
Tallahassee, FL 32399-0850

REC'D
OCT-5 PM 4:19
COMMUNICATIONS

RE: DOCKET NO. 980001-EI

Dear Ms. Bayó:

Enclosed for filing please find the original and ten (10) copies of Florida Power & Light Company's Petition For Approval Of Its Levelized Fuel Cost Recovery Factors, Capacity Cost Recovery Factors and GPIF Targets and Rewards in the above referenced docket. *10930-98*

Also enclosed please find the original and ten (10) copies of the Testimony and Exhibits of R. Silva, K.M. Dubin, and R.L. Wade. *10933-98*

In addition, please find the original and ten (10) copies of Amended Testimony and Exhibits of R. Silva, amending GPIF Testimony originally filed on May 27, 1998. *10931-98 10932-98*

ACK *Handwritten*

AFA _____

APP _____

CAF _____

CMU _____

CTR _____

EAG *Petersman* MMC:ml

LEG *1* cc: All Parties of Record

LIN *3108*

OPC _____

RCH _____

SEC *1*

WAS _____

OTH _____

Very truly yours,

Matthew M. Childs
Matthew M. Childs, P.A.

RECEIVED FILED
Signature
FPSC BUREAU OF RECORDS

ORIGINAL

**BEFORE THE FLORIDA
PUBLIC SERVICE COMMISSION**

**DOCKET NO. 980001-EI
FLORIDA POWER & LIGHT COMPANY**

OCTOBER 5, 1998

GENERATING PERFORMANCE INCENTIVE FACTOR

**OCTOBER 1998 THROUGH DECEMBER 1998 AND
JANUARY 1999 THROUGH DECEMBER 1999**

TESTIMONY & EXHIBITS OF:

R. SILVA

DOCUMENT NUMBER-DATE

10931 OCT-58

FPSC-RECORDS/REPORTING

BEFORE THE FLORIDA PUBLIC SERVICE COMMISSION

FLORIDA POWER & LIGHT COMPANY

DOCKET NO. 980001-E1

OCTOBER 5, 1998

BEFORE THE PUBLIC SERVICE COMMISSION
FLORIDA POWER & LIGHT COMPANY

TESTIMONY OF R. SILVA

DOCKET NO. 980001-EI

OCTOBER 5, 1998

1 Q. Please state your name and business address.

2 A. My name is Rene Silva and my business address is 700 Universe Boulevard, Juno
3 Beach, Florida 33408.

4

5 Q. Mr. Silva, would you please state your present position with Florida Power
6 and Light Company (FPL).

7 A. I am the Manager of Planning, Forecasting and Regulatory Response in the Power
8 Generation Business Unit of FPL.

9

10 Q. Mr. Silva, have you previously had testimony presented in this docket?

11 A. Yes, I have.

12

13 Q. Mr. Silva, what is the purpose of your testimony?

14 A. The purpose of my testimony is to present the target unit average net operating heat
15 rates and target unit equivalent availability for the periods of (1) October through
16 December, 1998, and (2) January through December, 1999, for use in determining
17 the Generating Performance Incentive Factor (GPIF)

18

19 Q. Mr. Silva, please summarize what the FPL system targets are for Equivalent
20 Availability Factor (EAF) and Average Net Operating Heat Rate (ANOHR).

21 A. For the period of October through December, 1998, FPL projects a weighted
22 system equivalent planned outage factor of 12.1 % and a weighted system

1 equivalent unplanned outage factor of 5.8 %, which yield a weighted system
2 equivalent availability target of 82.1 %. For the period of January through
3 December, 1999, FPL projects a weighted system equivalent planned outage
4 factor of 4.7 % and a weighted system equivalent unplanned outage factor of 6.1
5 %, which yield a weighted system equivalent availability target of 89.2 %. The
6 targets for each of the two periods reflect planned refueling outages for two
7 nuclear units. FPL also projects weighted system average net operating heat rate
8 targets of 9235 BTU/KWH for the period of October through December, 1998,
9 and 9512 BTU/KWH for the period January through December, 1999. As
10 discussed later in this testimony, these targets represent fair and reasonable values
11 when compared to historical data. FPL therefore requests that the targets for these
12 performance indicators be approved by the Commission.

13
14 **Q. Have you prepared, or caused to have prepared under your direction,**
15 **supervision or control, an exhibit in this proceeding?**

16 **A. Yes, I have. It consists of two documents. The first document refers to the period**
17 **of October through December, 1998. The second document refers to the period of**
18 **January through December, 1999. The first page of each document is an index to**
19 **the contents of the document. All other pages are numbered according to the latest**
20 **revisions of the GPIF Manual as approved by the Commission.**

21
22 **Q. Have you established target levels of performance for the units to be**
23 **considered in establishing the GPIF for FPL?**

24 **A. Yes, I have. Document No.1, pages 6 and 7, contain the information summarizing**
25 **the targets and ranges for unit equivalent availability and average net operating**

1 heat rates for the sixteen (16) generating units which FPL proposes to have
2 considered as GPIF units for the period of October through December, 1998.
3 Similarly, Document No. 2, pages 6 and 7, contain the information summarizing
4 the targets and ranges for unit equivalent availability and average net operating
5 heat rates for the seventeen (17) generating units which FPL proposes to have
6 considered as GPIF units for the period of January through December, 1999. The
7 Sheets presented in these pages were prepared in accordance with the latest
8 revisions of the GPIF Manual. All of these targets have been derived utilizing
9 methodologies as adopted in Section 4, Subsection 2.3 of the GPIF Manual.
10

11 **Q. Please summarize FPL's methodology for determining equivalent availability**
12 **targets?**

13 **A.** The GPIF Manual requires that the equivalent availability target for each unit be
14 determined as the difference between 100% and the sum of the Planned Outage
15 Factor (POF) and the Unplanned Outage Factor (UOF). The POF for each unit is
16 determined by the length of the planned outage during the projected period. The
17 GPIF Manual also requires that the sum of the most recent twelve month ending
18 average forced outage factor (FOF) and maintenance outage factor (MOF) be used
19 as the starting value for the determination of the target unplanned outage factor
20 (UOF). The UOF is then adjusted to reflect recent unit performance and known
21 unit modifications or equipment changes. This adjustment is applied to units which
22 have had, during the historical period, or are forecasted to have, during the
23 projection period, planned outages.
24

1 forecasted system net generation for this period. These units were selected in accordance
2 with the GPIF Manual Section 3.1, using the estimated net generation for each unit taken
3 from the production costing simulation program, POWRSYM, which forms the basis for
4 the projected levelized fuel cost recovery factor for the period.

5
6 **Q. Mr. Silva, from the heat rate targets and equivalent availability range projections, do
7 FPL's generation performance targets represent a reasonable level of efficiency?**

8 **A. Yes. These targets are reasonable and in some cases very challenging.**

9
10 **Q. Does this conclude your testimony?**

11 **A. Yes, it does.**

DOCUMENT NO. 1

WITNESS: R. SILVA

DOCKET NO. 980001-EI

GENERATING PERFORMANCE INCENTIVE FACTOR

OCTOBER, 1998 THROUGH DECEMBER, 1998

DOCUMENT NUMBER 1 INDEX

FLORIDA POWER & LIGHT COMPANY

PERIOD OF: OCTOBER, 1998 THROUGH DECEMBER, 1998

<u>DOCUMENT</u>	<u>INDEX OF MANUAL PAGES</u>	<u>TITLE</u>
1	7.201.001	Index of Manual Pages
	7.201.002 to 7.201.003	Generating Unit Selection Criteria
	7.201.004	GPIF Reward/(Penalty) Table (Estimated)
	7.201.005	GPIF Calculation of Maximum Allowed Dollars (Estimated)
	7.201.006 and 7.201.007	GPIF Target and Range Summary
	7.201.008	GPIF Predicted Unit Heat Rates
	7.201.009	Derivation of Waiting Factors
	7.201.010	Estimated Unit Performance Data
	7.201.011 through 7.201.026	Unit MOF and FOF Versus Time Graphs
	7.201.027	Planned Outages Schedules (Estimated)

Table 2.0
POWRSYM Projected System Generation
Period Of: October 1998 Through December 1998

<u>Name</u>	<u>Unit</u>	<u>Capacity</u> <u>(MW)</u>	<u>Service</u> <u>Hours</u>	<u>Net Output</u> <u>MWH</u>	<u>NOF</u> <u>%</u>	<u>% of Total</u> <u>Output</u>	<u>Cumulative</u>	<u>Production</u>
							<u>% of Total</u> <u>Output</u>	<u>Cost</u> <u>(\$000)</u>
St. Lucie	1	848	2112	1801378	100.5%	11.40	11.40	6755
Turkey Point	4	709	2075	1487632	101.1%	9.41	20.81	4834
Turkey Point	3	709	1459	1046247	101.1%	6.62	27.43	7560
Martin	4	450	2130	979843	102.2%	6.20	33.63	19805
Scherer	4	603	2165	945299	72.4%	5.98	39.61	17120
Ft. lauderdale	4	445	2080	938089	101.4%	5.94	45.55	20652
St Lucie	2	721	1277	926832	100.7%	5.86	51.41	3338
Ft. Myers	2	399	1991	743478	93.6%	4.70	56.11	14357
Martin	3	450	1493	685549	102.0%	4.34	60.45	14113
Ft. Lauderdale	5	445	1422	640193	101.2%	4.05	64.50	13788
Sanford	5	393	1681	503315	76.3%	3.18	67.69	10576
Riviera	3	291	1819	455368	85.9%	2.88	70.57	9406
Port Everglades	3	395	1555	434965	70.8%	2.75	73.32	9621
Cape Canaveral	2	399	1503	413125	68.9%	2.61	75.94	8761
Riviera	4	291	1744	408966	80.5%	2.59	78.52	8553
Manatee	2	803	757	366221	60.3%	2.32	80.84	8174
Port Everglades	4	405	1347	353014	64.7%	2.23	83.07	7842
Cape Canaveral	1	399	1367	327614	60.1%	2.07	85.15	7023
Putnam	2	254	1273	302773	93.5%	1.92	87.06	7821
Putnam	1	254	1238	297367	94.4%	1.88	88.94	7629
St. Johns River	2	120	2184	262766	100.3%	1.66	90.61	3491
St. Johns River	1	120	2184	262316	100.1%	1.66	92.27	3512
Manatee	1	803	546	233810	53.4%	1.48	93.75	5242
Turkey Point	2	402	875	226935	64.5%	1.44	95.18	5101
Turkey Point	1	403	881	207307	58.4%	1.31	96.49	4691
Ft. Myers	1	142	1674	185764	78.3%	1.18	97.67	3941
Sanford	3	145	1061	99321	64.4%	0.63	98.30	2192
Sanford	4	385	354	98942	72.5%	0.63	98.92	2059
Martin	2	824	241	73127	36.8%	0.46	99.39	7017
Port Everglades	1	212	337	40278	56.5%	0.25	99.64	999
Martin	1	819	93	27792	36.5%	0.18	99.82	763
Port Everglades	2	213	236	24542	48.9%	0.16	99.97	622
Cutler	6	145	39	3246	57.5%	0.02	99.99	107
Ft. Lauderdale GT	(1-24)	1520	1	993	65.3%	0.01	100.00	42
Cutler	5	72	6	250	58.1%	0.00	100.00	9
Port Everglades G	(1-12)	376	0	47	-	0.00	100.00	2
Ft. Myers GT	(1-12)	612	0	9	-	0.00	100.00	1
Totals				<u>15804713</u>		<u>100.00</u>	<u>100.00</u>	<u>238518</u>

* Weighted average 2 months winter 1 months summer.

TABLE 3.0

**FLORIDA POWER & LIGHT COMPANY
UNITS TO BE USED TO DETERMINE THE
GENERATING PERFORMANCE INCENTIVE FACTOR**

PERIOD OF: OCTOBER, 1998 THROUGH DECEMBER, 1998

Cape Canaveral Unit No. 2

Ft. Lauderdale Unit No. 4

Ft. Lauderdale Unit No. 5

Ft. Myers Unit No. 2

Martin Unit No. 3

Martin Unit No. 4

Manatee No. 2

Port Everglades Unit No. 3

Riviera Unit No. 3

Riviera Unit No. 4

Sanford Unit No. 5

Turkey Point Unit No. 3

Turkey Point Unit No. 4

St. Lucie Unit No. 1

St. Lucie Unit No. 2

Scherer Unit No. 4

- GENERATING PERFORMANCE INCENTIVE FACTOR

REWARD/PENALTY TABLE (ESTIMATED)

FLORIDA POWER & LIGHT COMPANY
 PERIOD OF: OCTOBER 1998 THROUGH DECEMBER 1998

Generating Performance Incentive Points (GPIF)	Fuel Savings/(Loss) (\$000)	Generating Performance Incentive Factor (\$000)
+ 10	7,540.00	19,714.59
+ 9	6,786.00	17,743.13
+ 8	6,032.00	15,771.67
+ 7	5,278.00	13,800.21
+ 6	4,524.00	11,828.75
+ 5	3,770.00	9,857.30
+ 4	3,016.00	7,885.84
+ 3	2,262.00	5,914.38
+ 2	1,508.00	3,942.92
+ 1	754.00	1,971.46
0	0.00	0.00
- 1	(774.00)	(1,971.46)
- 2	(1,548.00)	(3,942.92)
- 3	(2,322.00)	(5,914.38)
- 4	(3,096.00)	(7,885.84)
- 5	(3,870.00)	(9,857.30)
- 6	(4,644.00)	(11,828.75)
- 7	(5,418.00)	(13,800.21)
- 8	(6,192.00)	(15,771.67)
- 9	(6,966.00)	(17,743.13)
- 10	(7,740.00)	(19,714.59)

GENERATING PERFORMANCE INCENTIVE FACTOR

CALCULATION OF MAXIMUM ALLOWED INCENTIVE DOLLARS

ESTIMATED

FLORIDA POWER & LIGHT COMPANY

PERIOD OF: OCTOBER 1998 THROUGH DECEMBER 1998

LINE 1	BEGINNING OF PERIOD BALANCE OF COMMON EQUITY	\$	4,869,935,000
	END OF MONTH BALANCE OF COMMON EQUITY		
LINE 2	MONTH OF OCTOBER	98	\$ 4,845,750,000
LINE 3	MONTH OF NOVEMBER	98	\$ 4,825,442,000
LINE 4	MONTH OF DECEMBER	98	\$ 4,805,680,000
LINE 5	AVERAGE COMMON EQUITY FOR THE PERIOD (SUMMATION OF LINE 1 THROUGH LINE 4 DIVIDED BY 4)	\$	4,836,701,000
LINE 6	50 BASIS POINTS		0.0025
LINE 7	REVENUE EXPANSION FACTOR		60.4525%
LINE 8	MAXIMUM ALLOWED INCENTIVE DOLLARS (LINE 5 TIMES LINE 6 DIVIDED BY LINE 7)	\$	20,002,072
LINE 9	JURISDICTIONAL SALES		18,972,242,392 KWH
LINE 10	TOTAL SALES		19,248,898,185 KWH
LINE 11	JURISDICTIONAL SEPARATION FACTOR (LINE 9 DIVIDED BY LINE 10)		98.56%
LINE 12	MAXIMUM ALLOWED JURISDICTIONAL INCENTIVE DOLLARS	\$	19,714,591

GPIF TARGET AND RANGE SUMMARY

 FLORIDA POWER & LIGHT COMPANY
 PERIOD OF: OCTOBER 1998 THROUGH DECEMBER 1998

Plant / Unit	Weighting Factor (%)	EAF Target (%)	EAF Range		Max. Fuel Savings (\$000's)	Max. Fuel Loss (\$000's)
			Max. (%)	Min. (%)		
Cape Canaveral 2	0.08	93.6	96.1	91.1	5.9	-5.94
Lauderdale 4	0.64	96.0	98.0	94.0	48.19	-48.16
Lauderdale 5	0.42	63.7	65.7	61.7	31.98	-31.99
Fort Myers 2	0.35	93.9	96.4	91.4	26.73	-26.8
Manatee 2	0.04	88.8	91.8	85.8	3.26	-3.26
Martin 3	0.50	81.5	83.5	79.5	38.02	-28.2
Martin 4	0.37	96.0	98.0	94.0	28.19	-39.59
Port Everglades 3	0.07	96.0	98.0	94.0	5.63	-5.63
Riviera 3	0.05	94.4	96.9	91.9	3.53	-3.53
Riviera 4	0.04	93.6	96.1	91.1	2.78	-2.77
Sanford 5	0.07	89.9	92.9	86.9	5.02	-5.06
Turkey Point 3	7.39	67.1	70.1	64.1	557.32	-557.47
Turkey Point 4	10.85	93.6	96.6	90.6	818.05	-818.31
St. Lucie 1	12.62	92.8	95.8	89.8	951.59	-951.27
St. Lucie 2	6.63	57.1	60.1	54.1	500.3	-500.45
Scherer 4	0.23	94.6	97.1	92.1	17.34	-17.09
	<u>40.35</u>				<u>3043.83</u>	<u>-3045.52</u>

GPIF TARGET AND RANGE SUMMARY

FLORIDA POWER & LIGHT COMPANY
 PERIOD OF: OCTOBER 1998 THROUGH DECEMBER 1998

Plant / Unit	Weighting Factor (%)	ANOHR TARGET		ANOHR RANGE		Max. Fuel Savings	Max. Fuel Loss
		BTU/KWH	NOF	BTU/KWH	BTU/KWH	(\$000's)	(\$000's)
Cape Canaveral 2	1.62	9613	68.9	9404	9822	122.1	122.1
Lauderdale 4	5.09	7262	101.4	7052	7472	383.9	383.9
Lauderdale 5	2.37	7257	101.25	7088	7426	178.6	178.6
Fort Myers 2	3.91	9156	93.59	8893	9419	294.8	294.8
Manatee 2	3.95	10198	60.27	9751	10645	298.2	298.2
Martin 3	4.92	6999	102	6740	7258	371.0	371.0
Martin 4	7.33	6913	102.23	6645	7181	553.0	553.0
Port Everglades 3	3.79	9801	70.82	9435	10167	285.7	285.7
Riviera 3	2.21	9781	85.93	9533	10029	166.3	166.3
Riviera 4	3.07	9913	80.5	9570	10256	231.2	231.2
Sanford 5	3.90	9955	76.25	9603	10307	294.3	294.3
Turkey Point 3	4.72	11030	101.1	10763	11297	355.9	424.2
Turkey Point 4	6.47	11138	101.12	10880	11396	488.2	550.8
St. Lucie 1	3.15	10871	100.48	10704	11038	237.3	350.9
St. Lucie 2	2.18	10876	100.7	10725	11027	164.3	117.5
Scherer 4	0.96	10175	72.4	10057	10293	72.3	72.3
	<u>59.64</u>					<u>4497.16</u>	<u>4694.85</u>

**PROJECTED UNIT HEAT RATE EQUATIONS
FLORIDA POWER & LIGHT COMPANY
OCTOBER, 1998 THROUGH DECEMBER, 1998**

Plant/Unit	ANOHR	NOF	NSC	ANOHR Equation		Bounds	R-sqr	First	Last	Exclusions
				a	b					
Cape Canaveral 2	9613	68.9	397	10026.0	-6.00	209.0	0.12	07-95	06-98	08-97, 11-97
Lauderdale 4	7262	101.4	430	8479.0	-12.00	210.0	0.39	07-95	06-98	
Lauderdale 5	7257	101.3	430	8573.0	-13.00	169.0	0.49	07-95	06-98	
Fort Myers 2	9156	93.6	397	10747.0	-17.00	263.0	0.47	07-95	06-98	11-96, 06-98
Manatee 2	10198	60.3	798	11042.0	-14.00	447.0	0.14	07-95	06-98	06-98
Martin 3	6999	102.0	430	7917.0	-9.00	259.0	0.17	07-95	06-98	
Martin 4	6913	102.2	430	7526.0	-6.00	268.0	0.07	07-95	06-98	01-97
Port Everglades 3	9801	70.8	403	11571.0	-25.00	366.0	0.44	07-95	06-98	05-96, 02-97
Riviera 3	9781	85.9	290	11070.0	-15.00	248.0	0.43	07-95	06-98	
Riviera 4	9913	80.5	290	11201.0	-16.00	343.0	0.39	07-95	06-98	
Sanford 5	9955	76.3	390	10565.0	-8.00	352.0	0.04	07-95	06-98	11-95, 03-98, 06-98
Turkey Point 3	11030	101.1	693	12749.0	-17.00	267.0	0.30	07-95	06-98	03-95, 03-97
Turkey Point 4	11138	101.1	693	13969.0	-28.00	258.0	0.56	07-95	06-98	03-96
St.Lucie 1	10871	100.5	839	12981.0	-21.00	167.0	0.56	07-95	06-98	04-96 - 07-96, 11-97-12-97
St.Lucie 2	10876	100.7	714	14602.0	-37.00	151.0	0.75	07-95	06-98	11-95 - 12-95, 05-97
Scherer 4	10175	72.4	844	10537.0	-5.00	118.0	0.17	07-95	06-98	04-96, 10-96

DERRIVATION OF WEIGHT FACTORS

FLORIDA POWER & LIGHT COMPANY
PERIOD OF: OCTOBER 1998 THROUGH DECEMBER 1998

PRODUCTION COSTING SIMULATION
FUEL COST (\$000'S)

Unit	Performance Indicator	At Target (1)	At Maximum Improvement (2)	Savings (3)	Factor (% Of Savings)
Cape Canaveral 2	EAF	238518	238524	5.9	0.08
	ANHR	238518	238640	122.1	1.62
Fl. Lauderdale 4	EAF	238518	238566	48.2	0.64
	ANHR	238518	238902	383.9	5.09
Fl Lauderdale 5	EAF	238518	238550	32.0	0.42
	ANHR	238518	238697	178.6	2.37
Fl. Myers 2	EAF	238518	238545	26.7	0.35
	ANHR	238518	238813	294.8	3.91
Manatee 2	EAF	238518	238521	3.3	0.04
	ANHR	238518	238816	298.2	3.95
Martin 3	EAF	238518	238556	38.0	0.50
	ANHR	238518	238889	371.0	4.92
Martin 4	EAF	238518	238546	28.2	0.37
	ANHR	238518	239071	553.0	7.33
Port Everglades 3	EAF	238518	238524	5.6	0.07
	ANHR	238518	238804	285.7	3.79
Riviera 3	EAF	238518	238522	3.5	0.05
	ANHR	238518	238684	166.3	2.21
Riviera 4	EAF	238518	238521	2.8	0.04
	ANHR	238518	238749	231.2	3.07
Sanford 5	EAF	238518	238523	5.0	0.07
	ANHR	238518	238812	294.3	3.90
Turkey Point 3	EAF	238518	239075	557.3	7.39
	ANHR	238518	238874	355.9	4.72
Turkey Point 4	EAF	238518	239336	818.0	10.85
	ANHR	238518	239006	488.2	6.47
St. Lucie 1	EAF	238518	239470	951.6	12.62
	ANHR	238518	238755	237.3	3.15
St. Lucie 2	EAF	238518	239018	500.3	6.63
	ANHR	238518	238682	164.3	2.18
Scherer 4	EAF	238518	238535	17.3	0.23
	ANHR	238518	238590	72.3	0.96
TOTAL				7541.0	100.00

(1) FUEL ADJUSTMENT BASE CASE - ALL UNIT PERFORMANCE INDICATORS AT TARGET

(2) ALL OTHER UNIT PERFORMANCE AT TARGET

(3) EXPRESSED IN REPLACEMENT ENERGY COSTS.

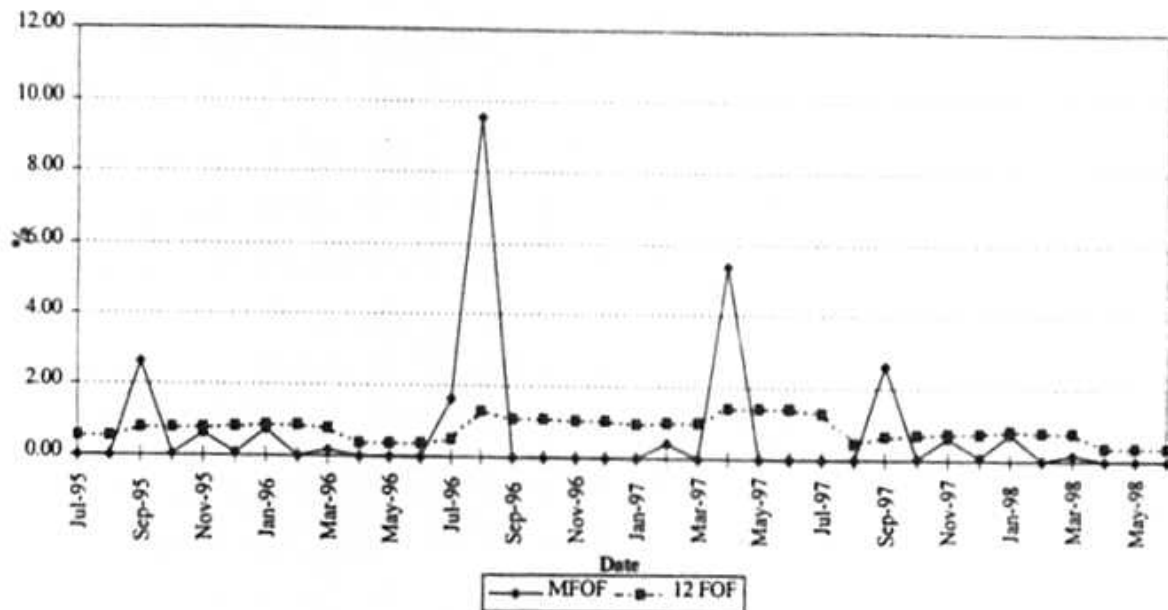
ESTIMATED UNIT PERFORMANCE DATA
FLORIDA POWER & LIGHT COMPANY
OCTOBER, 1998 THROUGH DECEMBER, 1998

Plant/Unit	EAF	EPOE	EUOE	EUOR	PH	SH	RSH	UH	EPOH	EFOH	EMOH	NET_GEN
Cape Canaveral 2	93.6	0.0	6.4	8.6	2208	1503	563.7	141.3	0.0	44.2	97.2	413125
Lauderdale 4	96.0	0.0	4.0	4.1	2208	2080	39.7	88.3	0.0	44.2	44.2	938089
Lauderdale 5	63.7	33.7	2.6	3.9	2208	1406	0.0	801.5	744.1	28.7	28.7	640193
Fort Myers 2	93.9	0.0	6.1	6.3	2208	1991	82.3	134.7	0.0	44.2	90.5	743478
Manatee 2	88.8	0.0	11.2	24.6	2208	757	1203.7	247.3	0.0	130.3	117.0	366221
Martin 3	81.5	14.7	3.8	5.3	2208	1493	306.5	408.5	324.6	37.5	46.4	685549
Martin 4	96.0	0.0	4.0	4.0	2208	2120	0.0	88.3	0.0	44.2	44.2	979843
Port Everglades 3	96.0	0.0	4.0	5.4	2208	1555	564.7	88.3	0.0	44.2	44.2	434965
Riviera 3	94.4	0.0	5.6	6.4	2208	1819	265.4	123.6	0.0	70.7	53.0	455368
Riviera 4	93.6	0.0	6.4	7.5	2208	1744	322.7	141.3	0.0	61.8	79.5	408966
Sanford 5	89.9	0.0	10.1	11.7	2208	1681	304.0	223.0	0.0	97.2	125.9	503315
Turkey Point 3	67.1	28.3	4.6	6.5	2208	1459	22.6	726.4	624.9	50.8	50.8	1046247
Turkey Point 4	93.6	0.0	6.4	6.4	2208	2067	0.0	141.3	0.0	70.7	70.7	1487632
St.Lucie 1	92.8	0.0	7.2	7.2	2208	2049	0.0	159.0	0.0	88.3	70.7	1801378
St.Lucie 2	57.1	39.1	3.8	6.2	2208	1261	0.0	947.2	863.3	42.0	42.0	926832
Scherer 4	94.6	0.0	5.4	5.4	2208	2089	0.0	119.2	0.0	75.1	44.2	945299

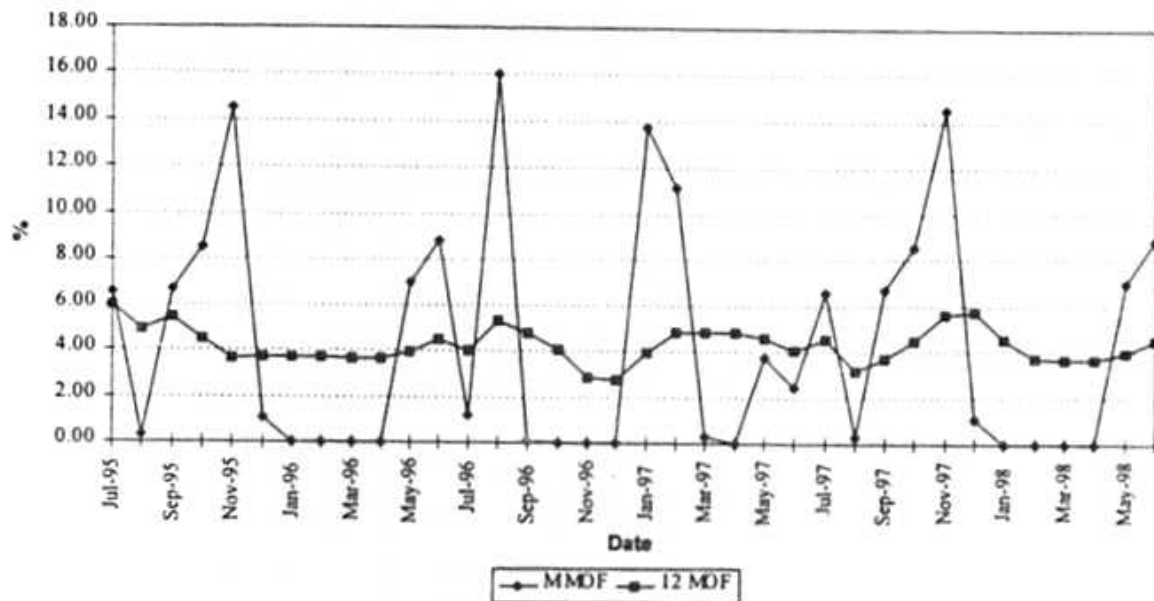
Issued by: Florida Power & Light Company

Docket No.: 980001-EI
FPL Witness: R. Silva
Exhibit: No.:
Document 1 Page 10 of 27

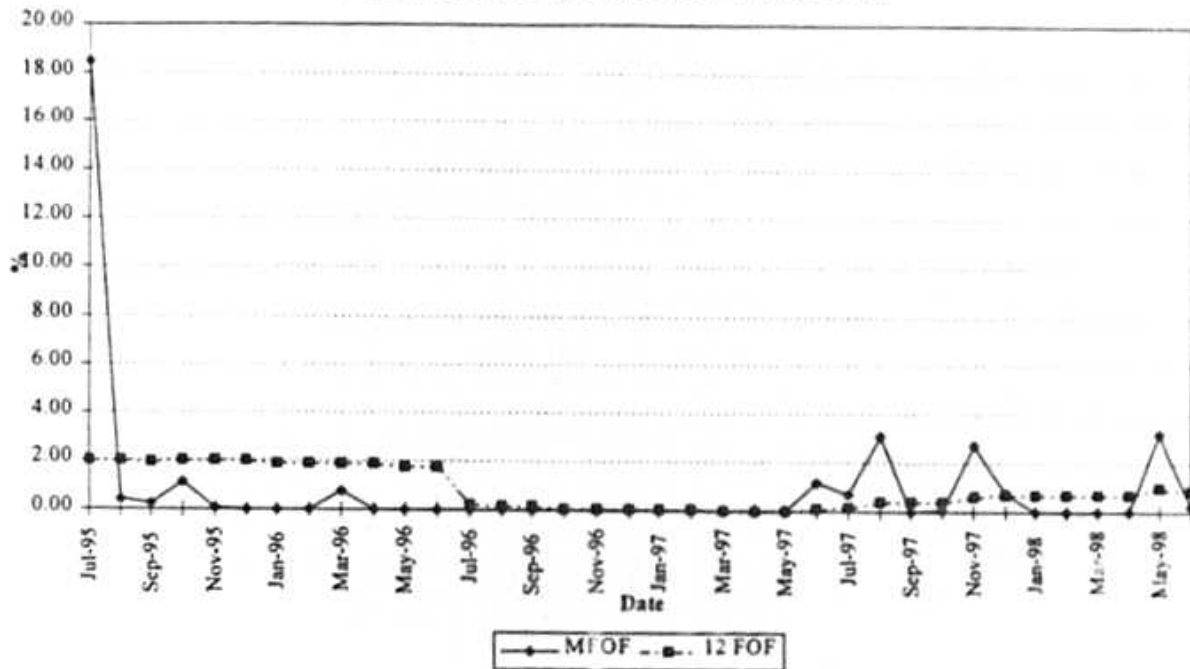
PCC 2 FORCED OUTAGE FACTOR



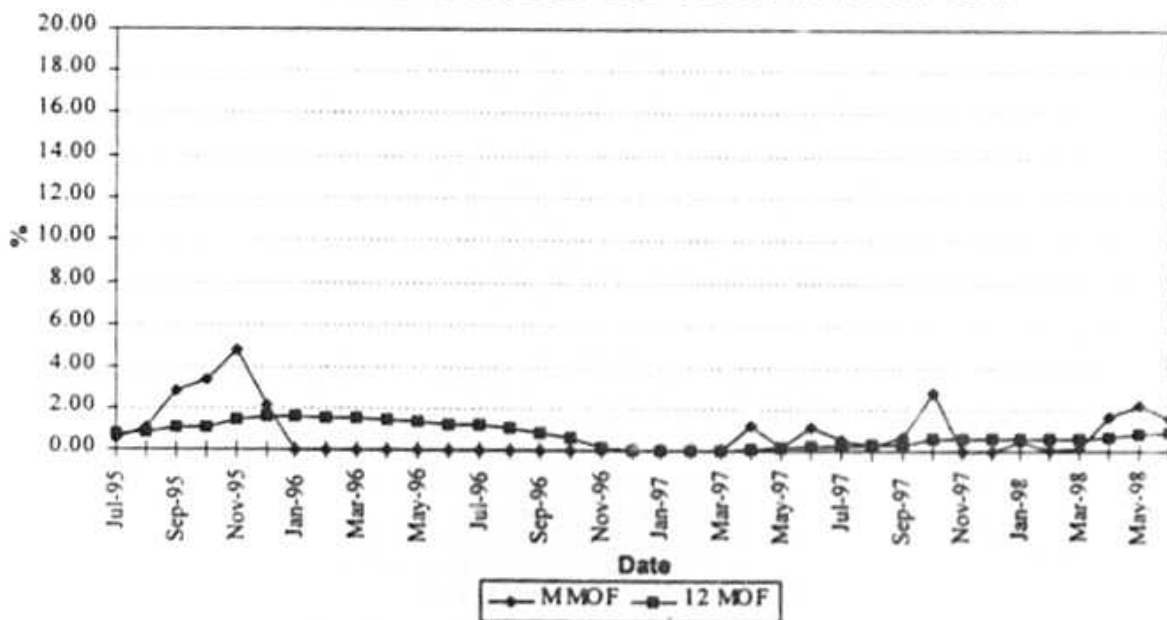
MAINTENANCE OUTAGE FACTOR



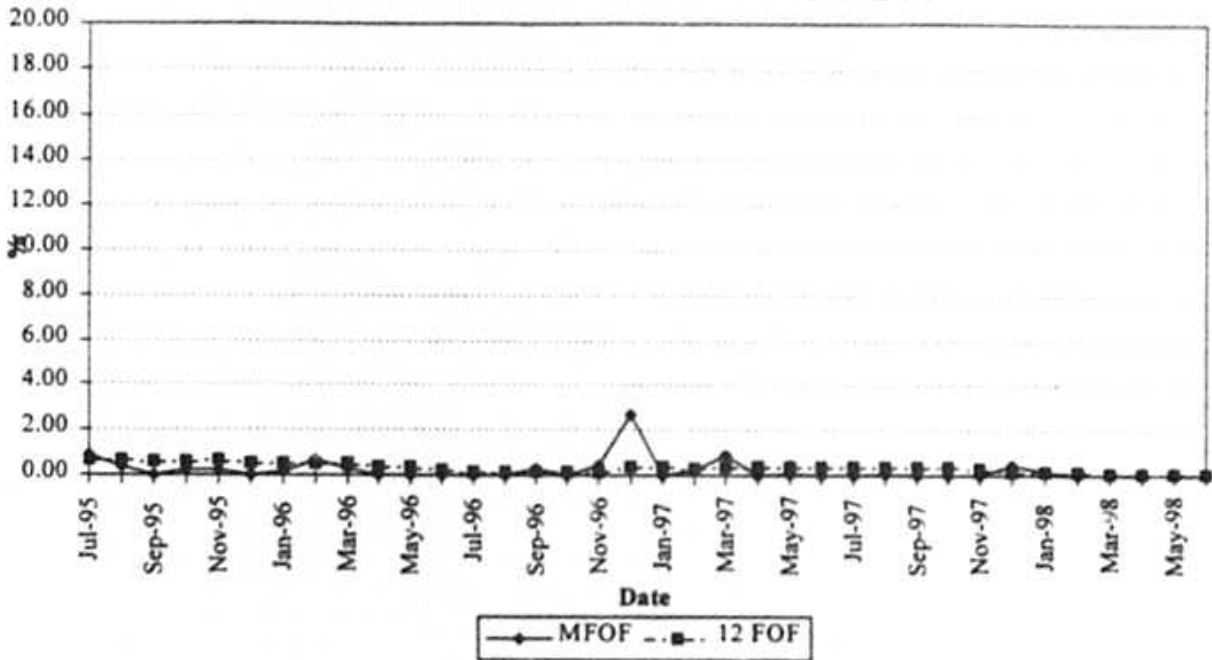
PFL 4 FORCED OUTAGE FACTOR



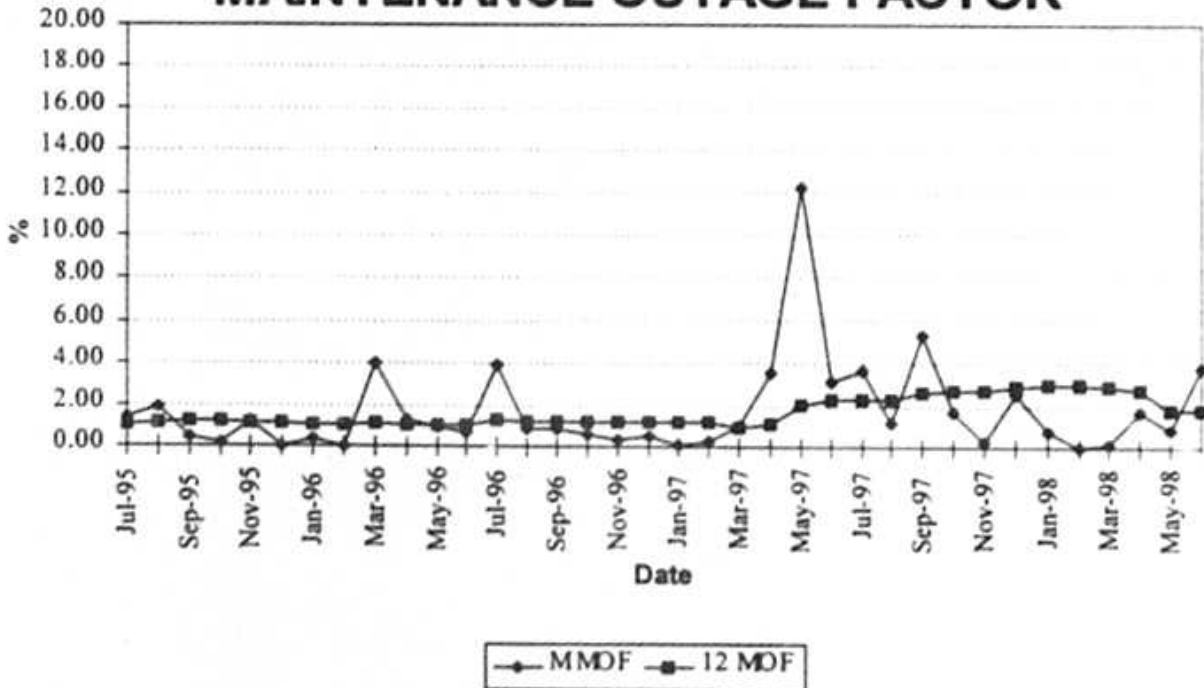
MAINTENANCE OUTAGE FACTOR



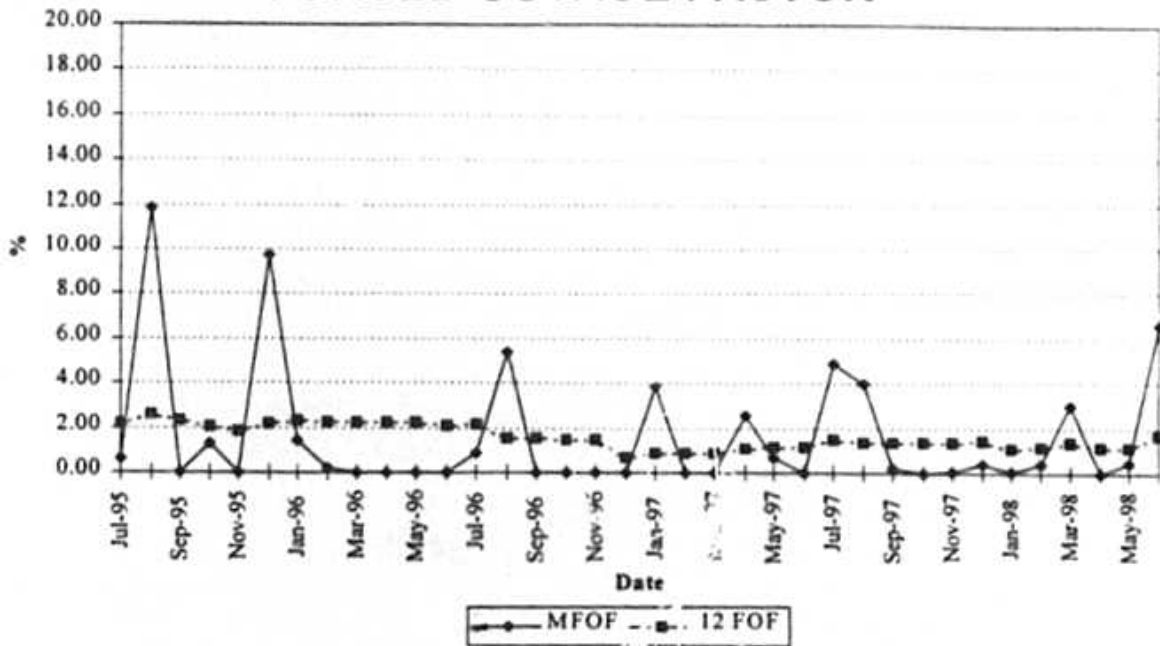
PFL 5 FORCED OUTAGE FACTOR



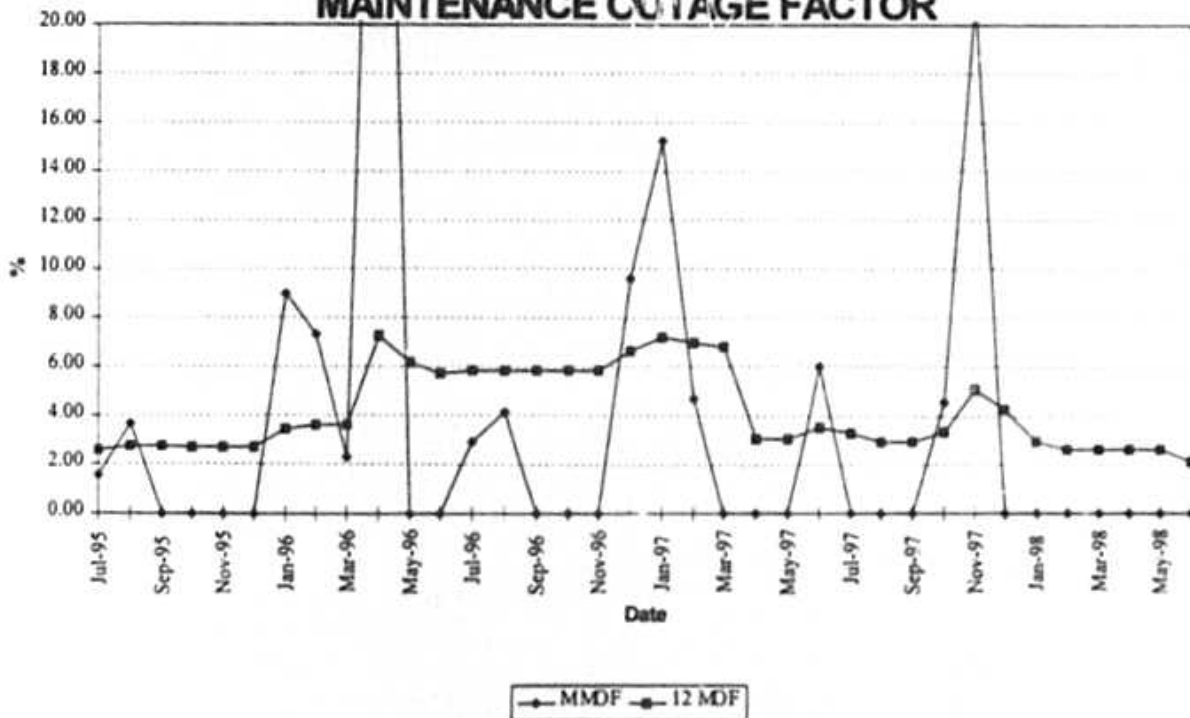
MAINTENANCE OUTAGE FACTOR



PFM 2 FORCED OUTAGE FACTOR

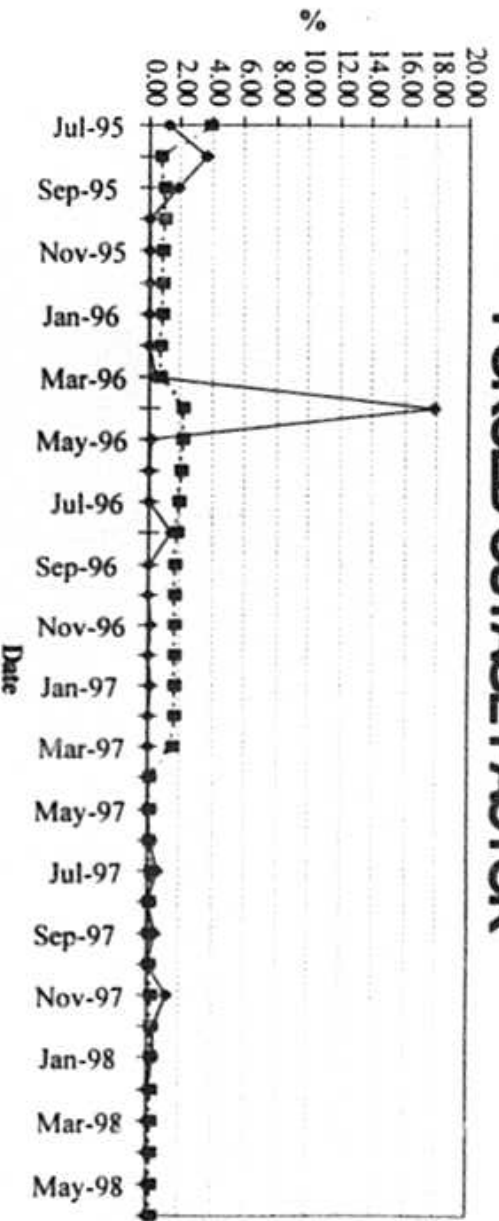


MAINTENANCE OUTAGE FACTOR

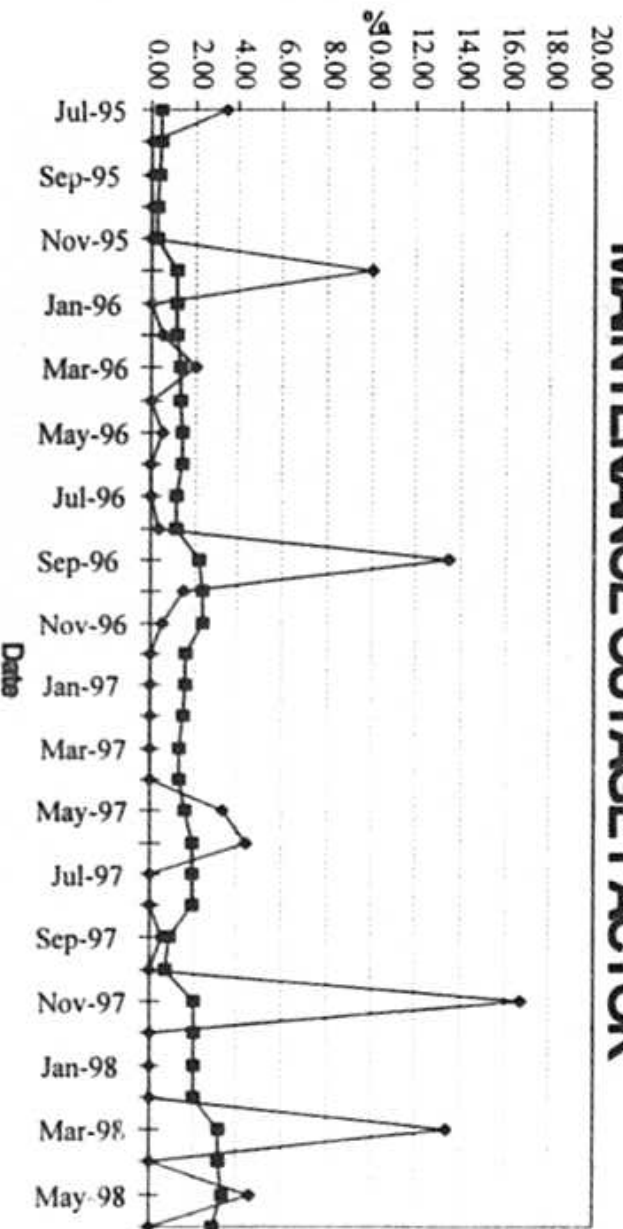


PMG 3

FORCED OUTAGE FACTOR



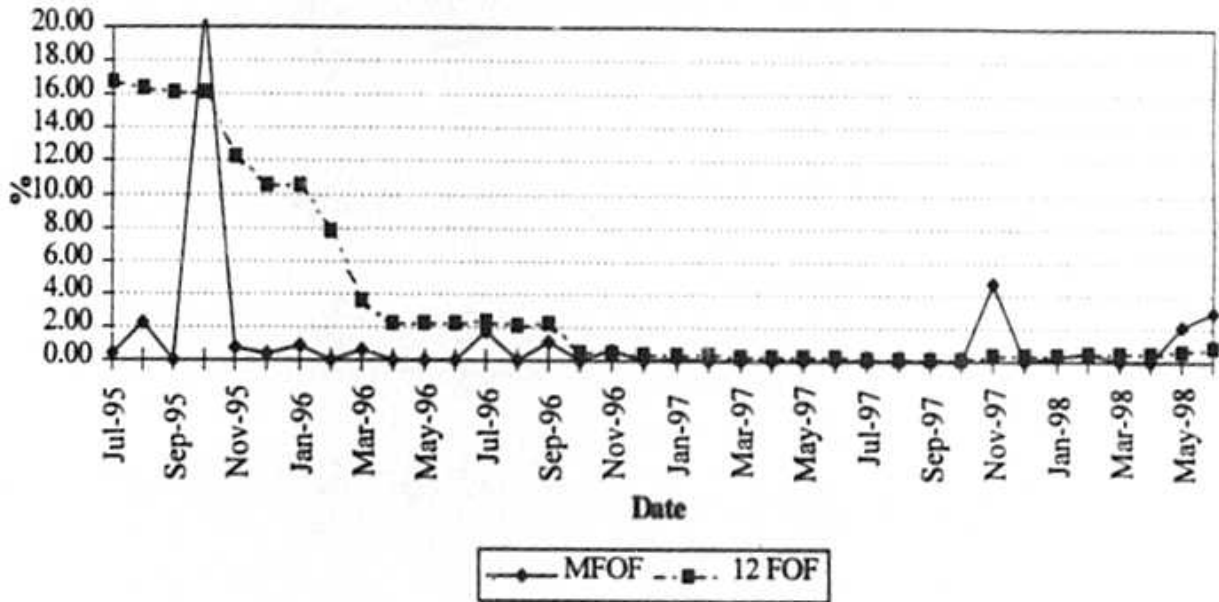
MAINTENANCE OUTAGE FACTOR



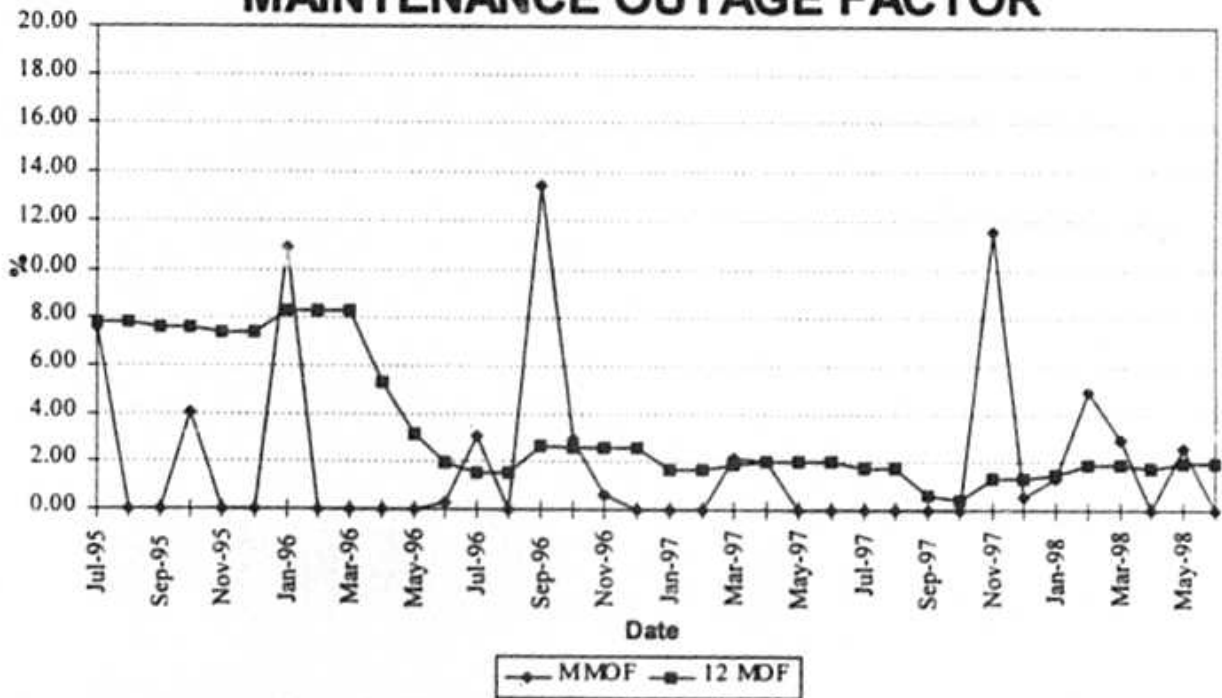
Issued by: Florida Power & Light Company

Docket No.: 980001-E1
 FPL Witness: R. Silva
 Exhibit No.:
 Document 1 Page 15 of 27

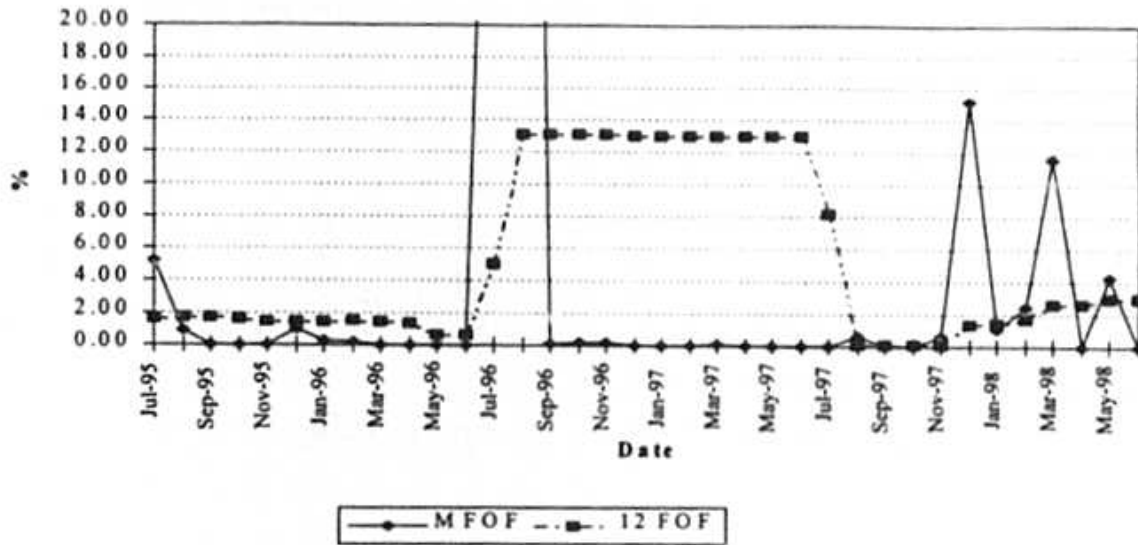
PMG 4 FORCED OUTAGE FACTOR



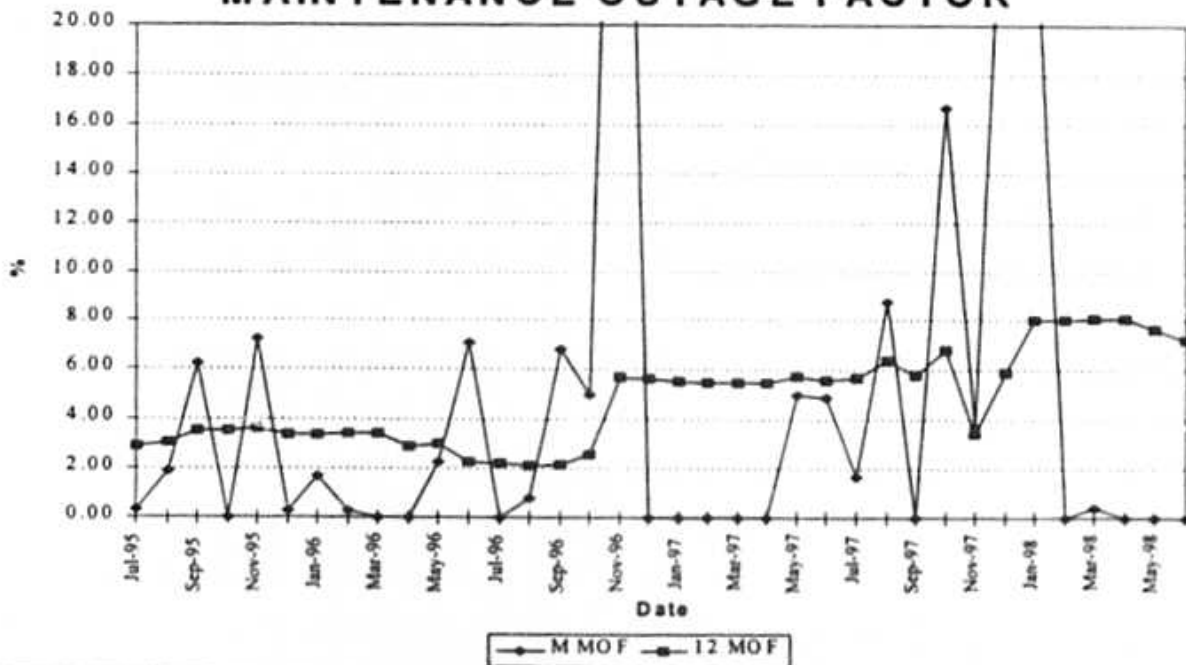
MAINTENANCE OUTAGE FACTOR



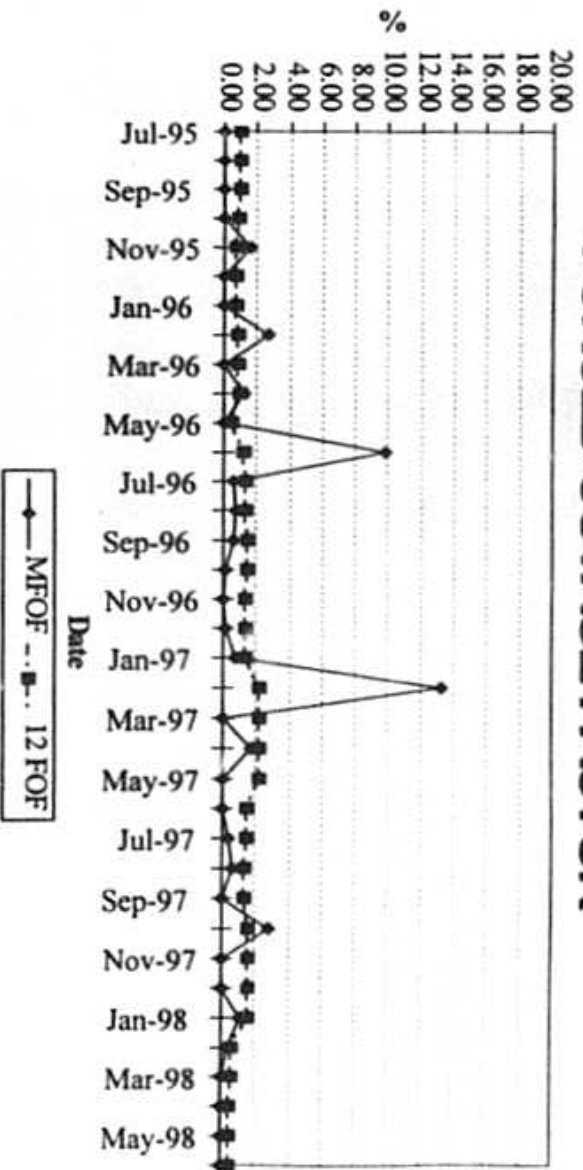
PMT 2 FORCED OUTAGE FACTOR



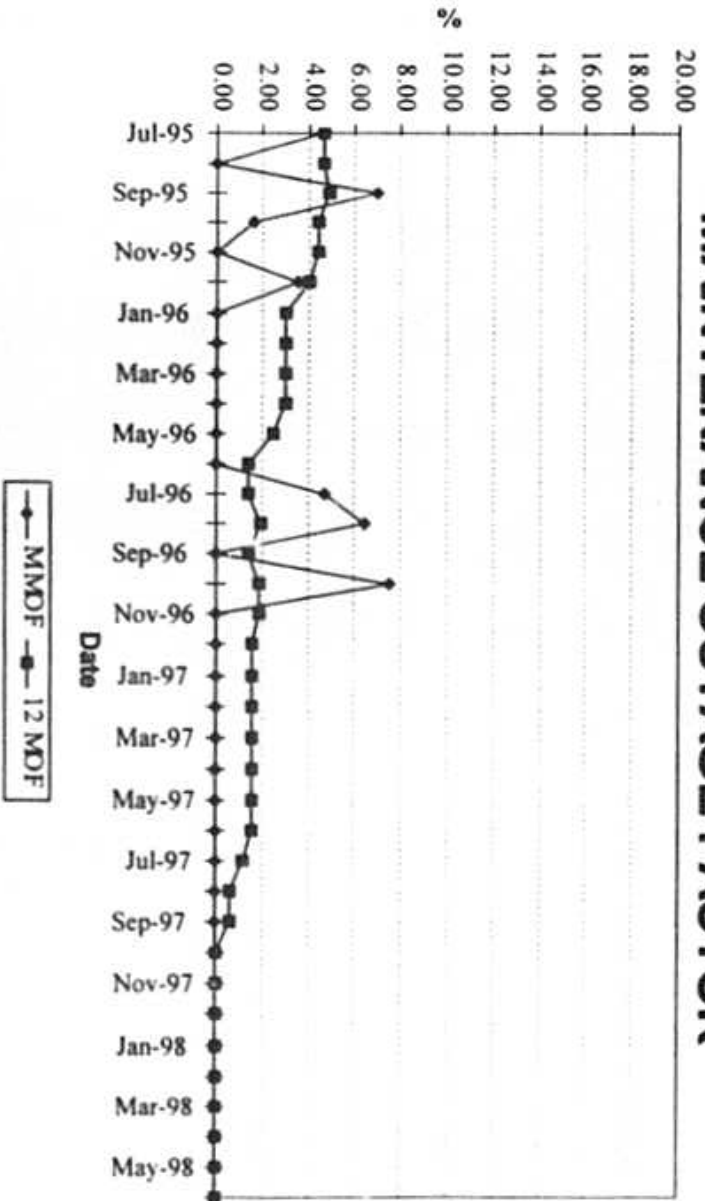
MAINTENANCE OUTAGE FACTOR



PPE 3 FORCED OUTAGE FACTOR



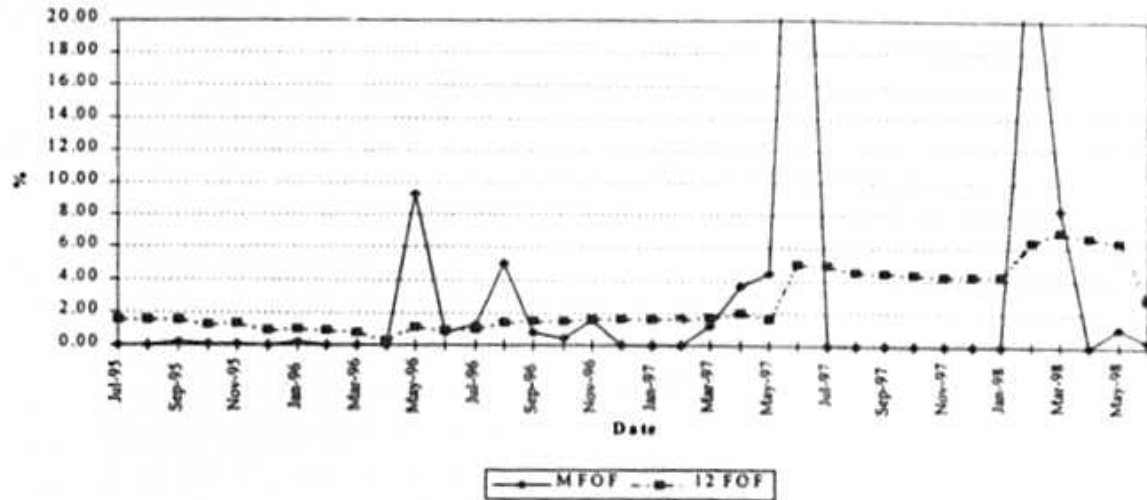
MAINTENANCE OUTAGE FACTOR



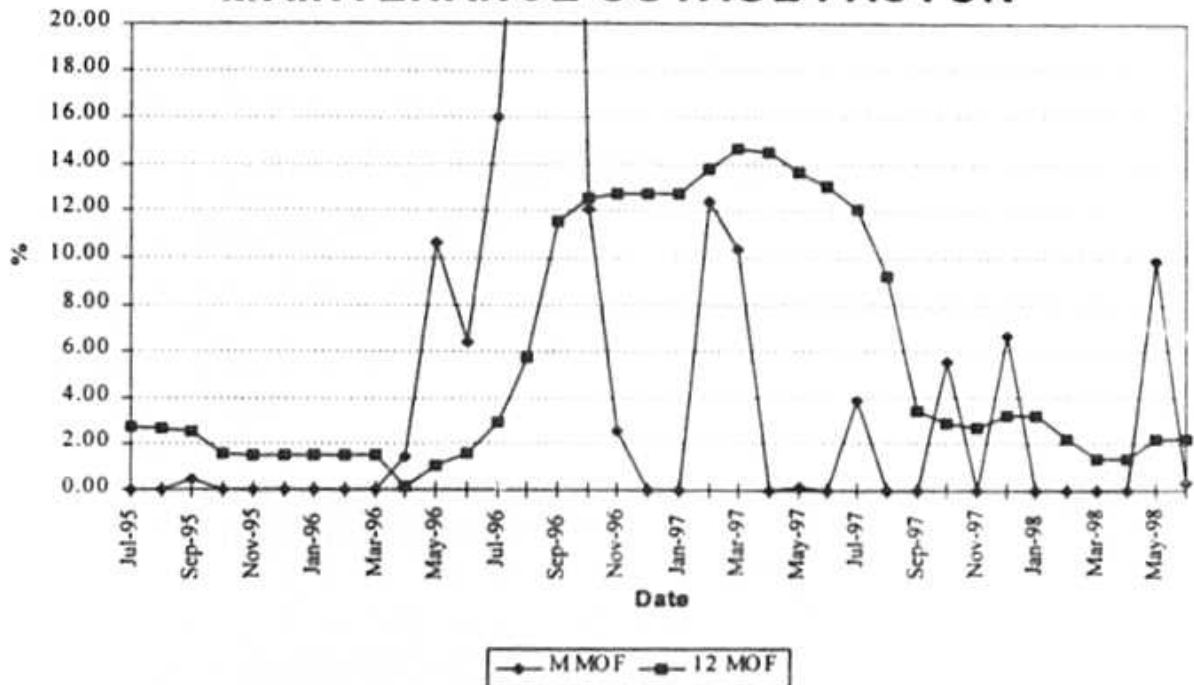
Issued by: Florida Power & Light Company

Docket No.: 980001-EI
 FPL Witness: R. Silva
 Exhibit: No.
 Document 1 Page 18 of 27

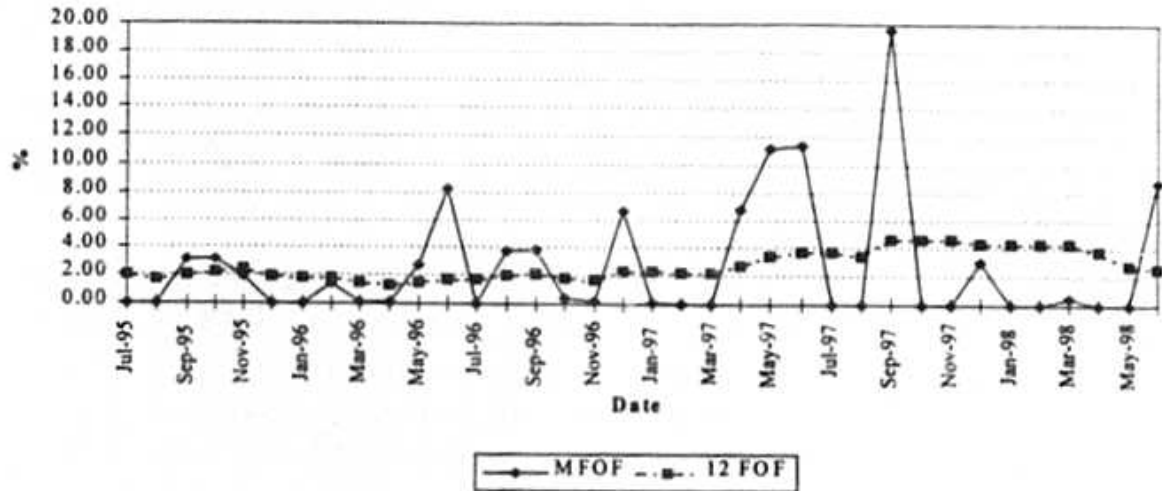
PRV 3 FORCED OUTAGE FACTOR



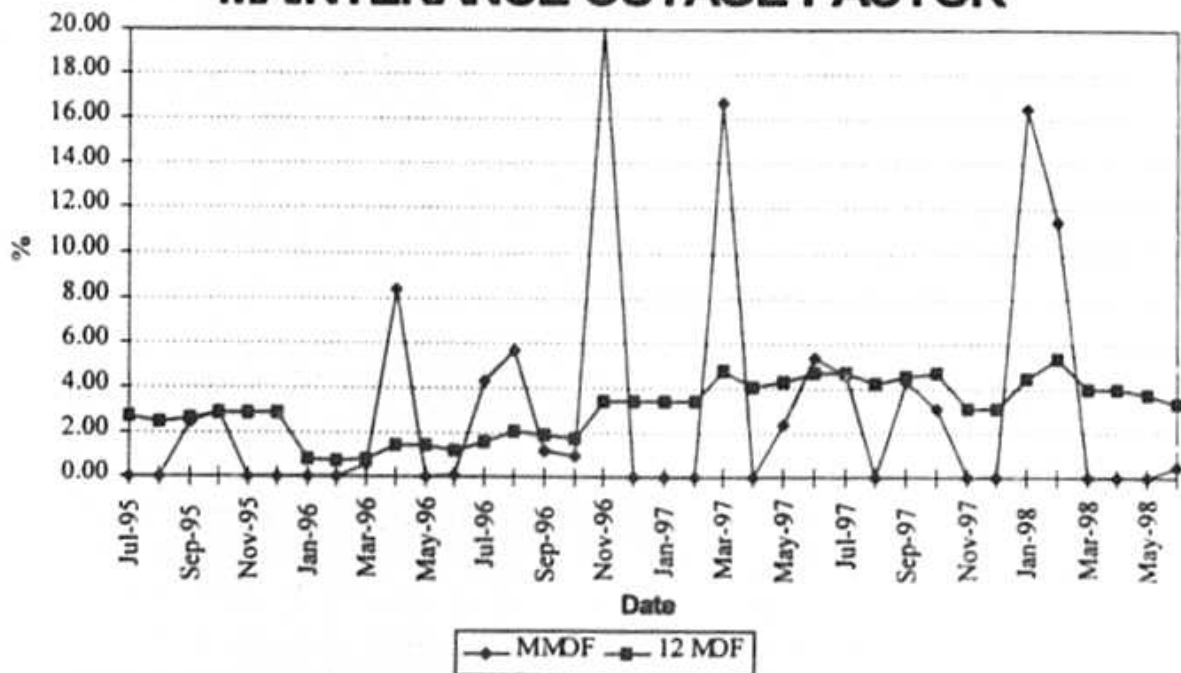
MAINTENANCE OUTAGE FACTOR



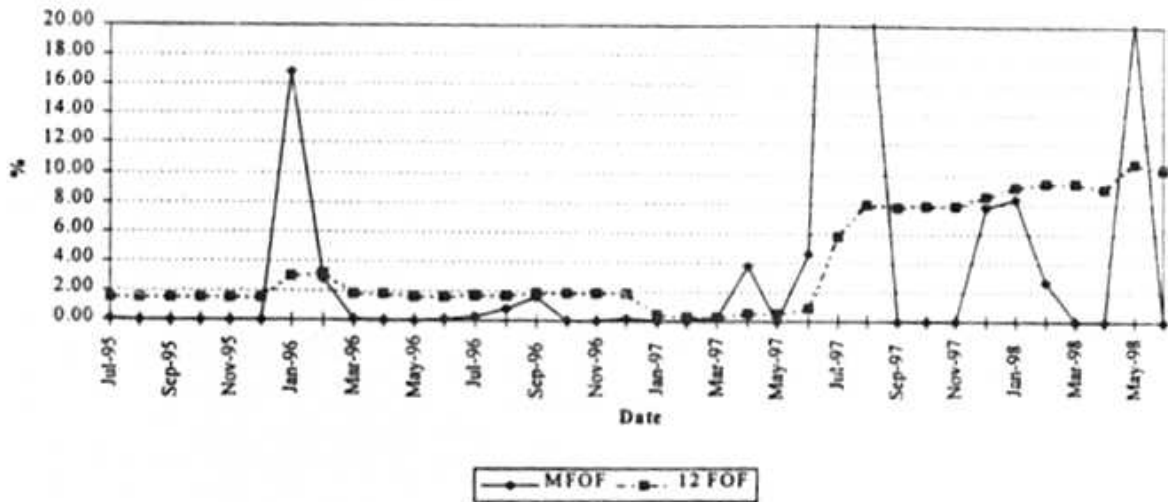
PRV 4 FORCED OUTAGE FACTOR



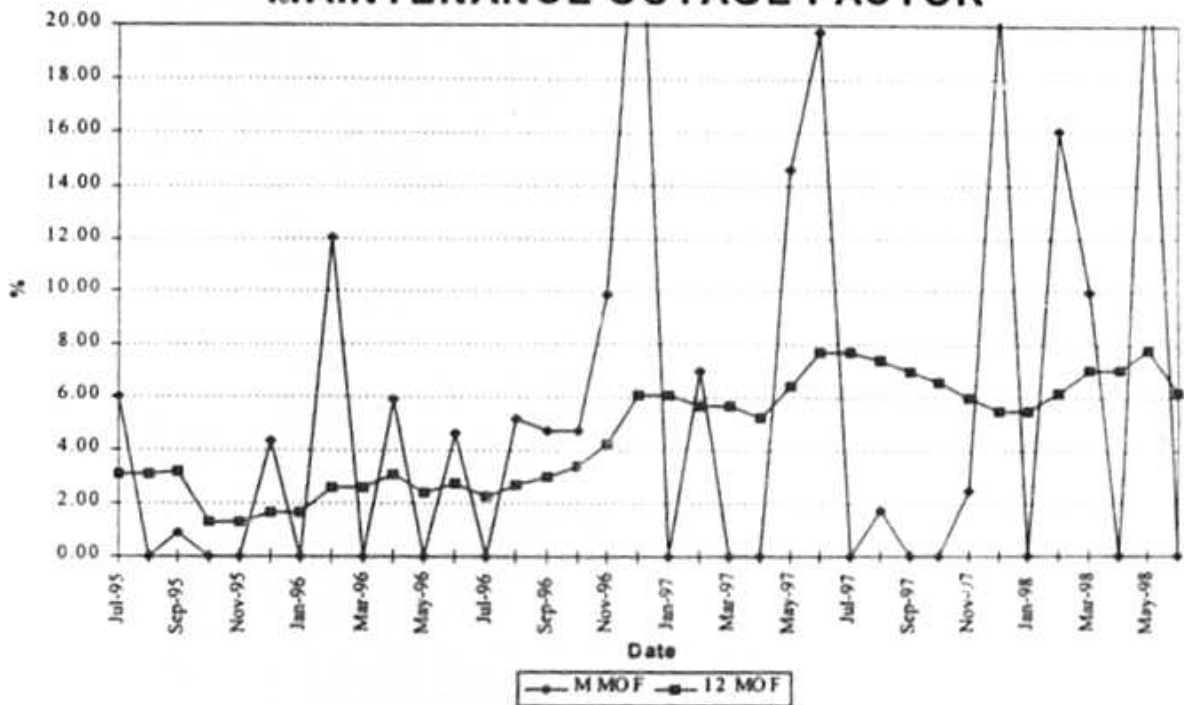
MAINTENANCE OUTAGE FACTOR



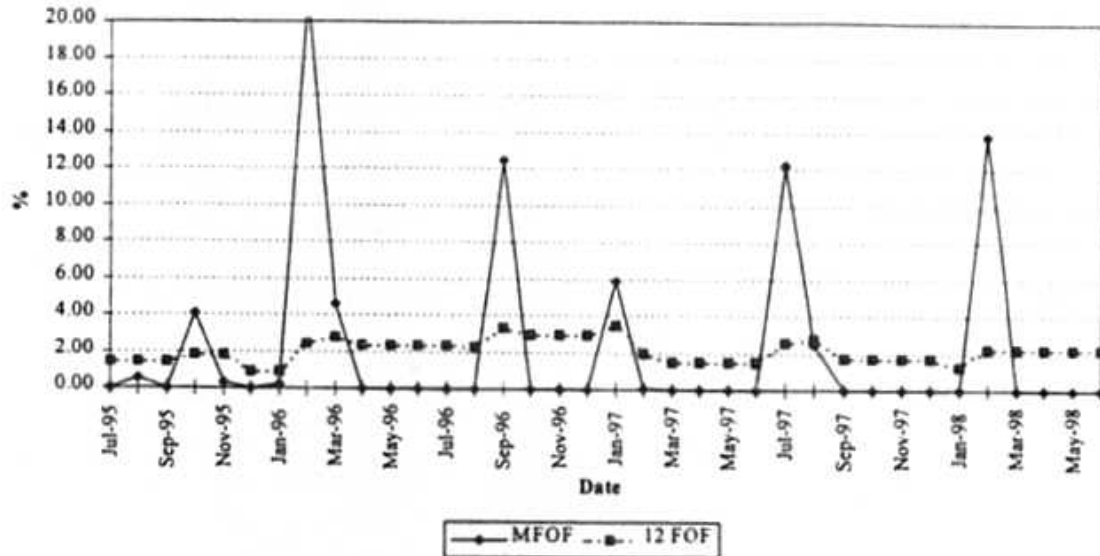
PSN 5 FORCED OUTAGE FACTOR



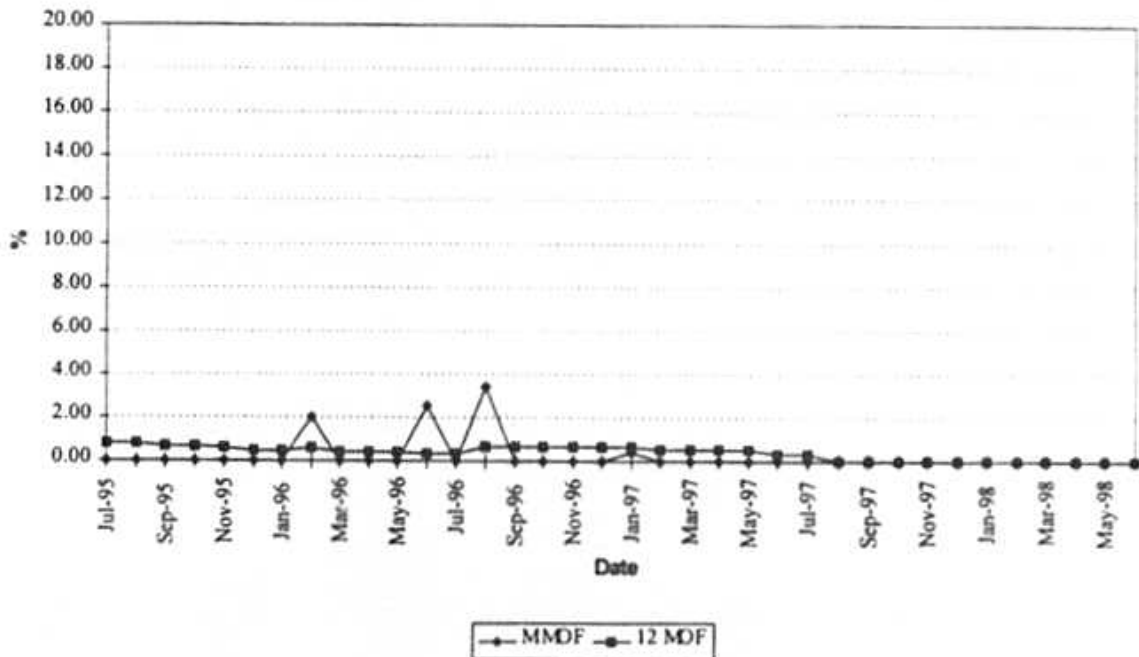
MAINTENANCE OUTAGE FACTOR



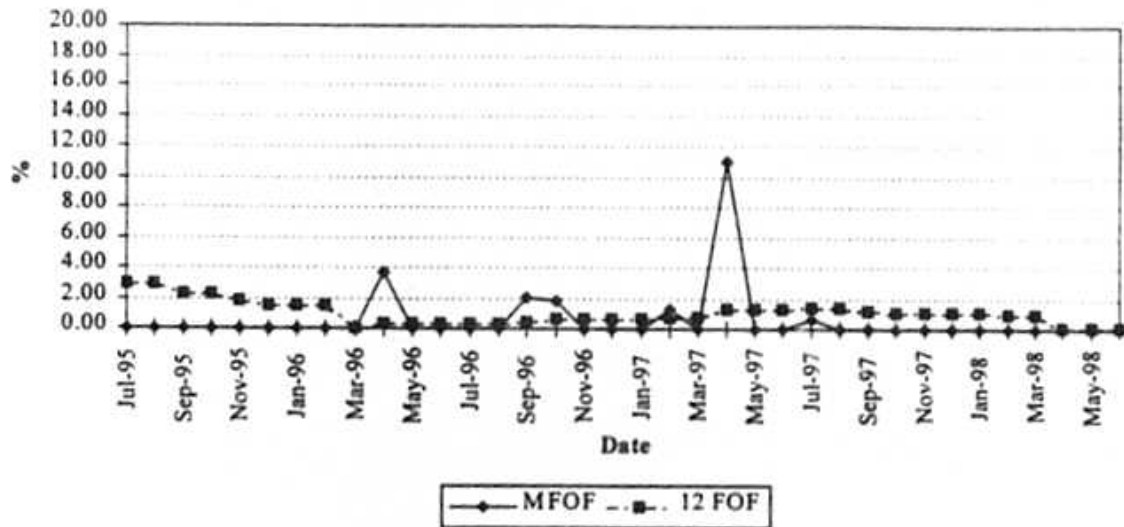
PTN 3 FORCED OUTAGE FACTOR



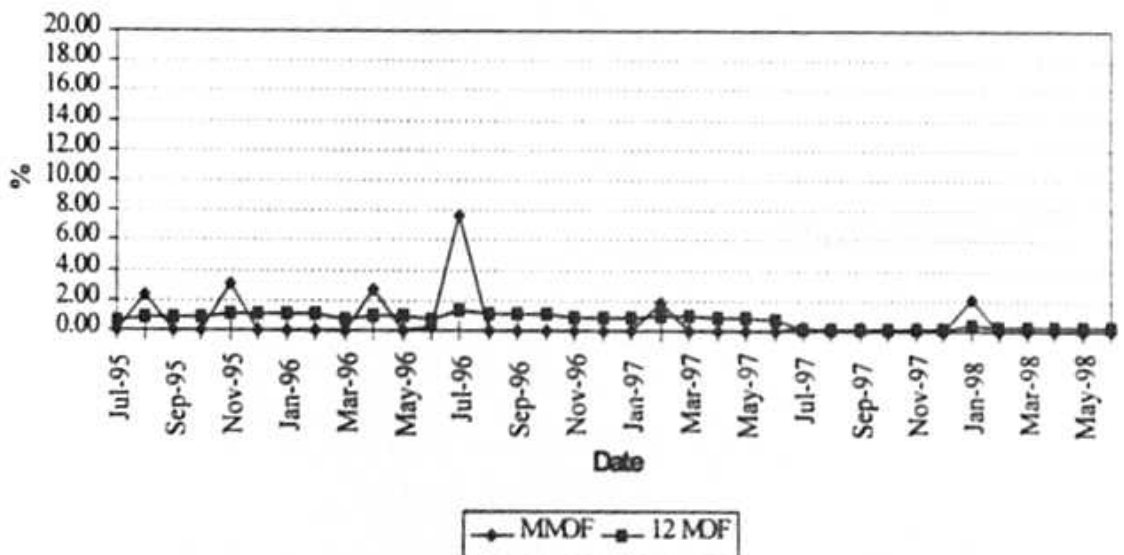
MAINTENANCE OUTAGE FACTOR



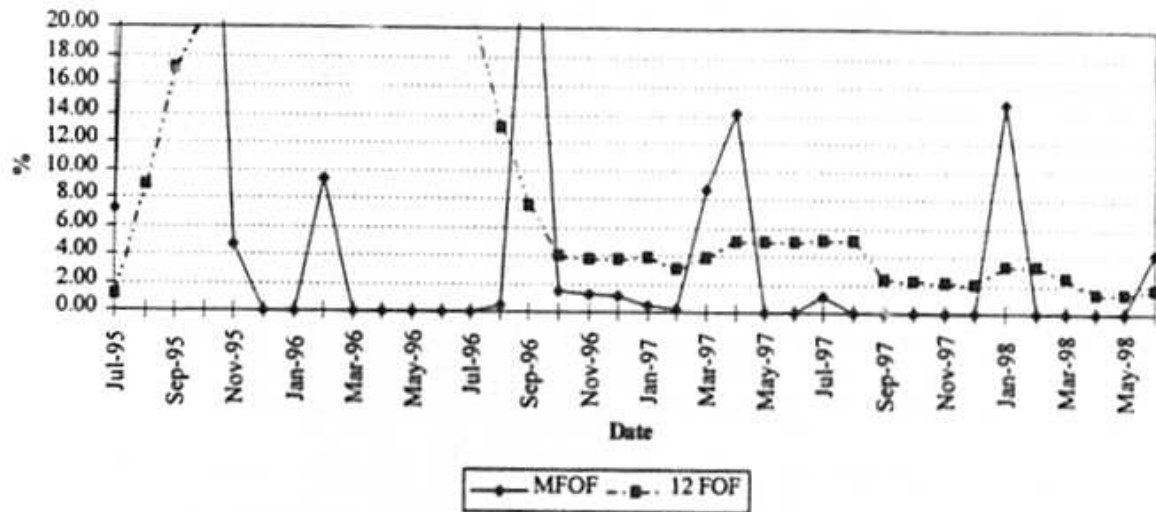
PTN 4 FORCED OUTAGE FACTOR



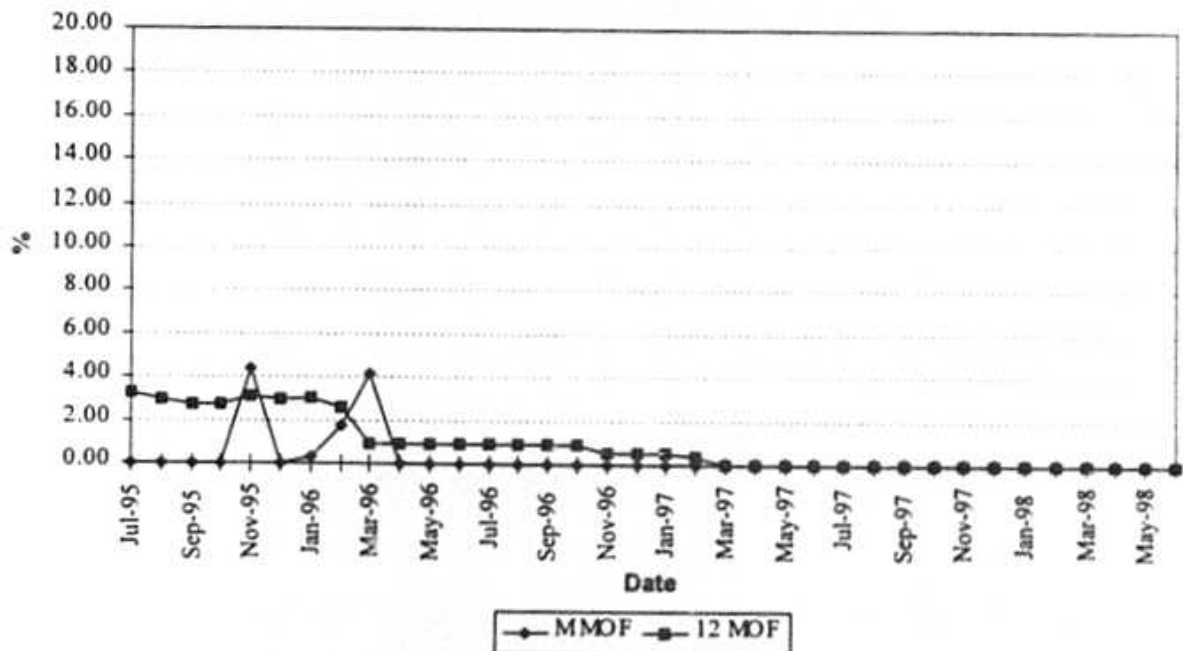
MAINTENANCE OUTAGE FACTOR



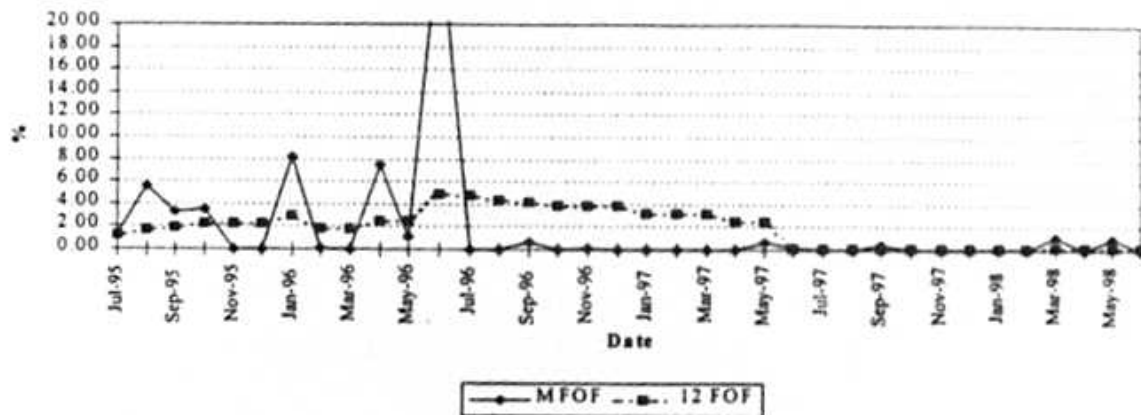
PSL 1 FORCED OUTAGE FACTOR



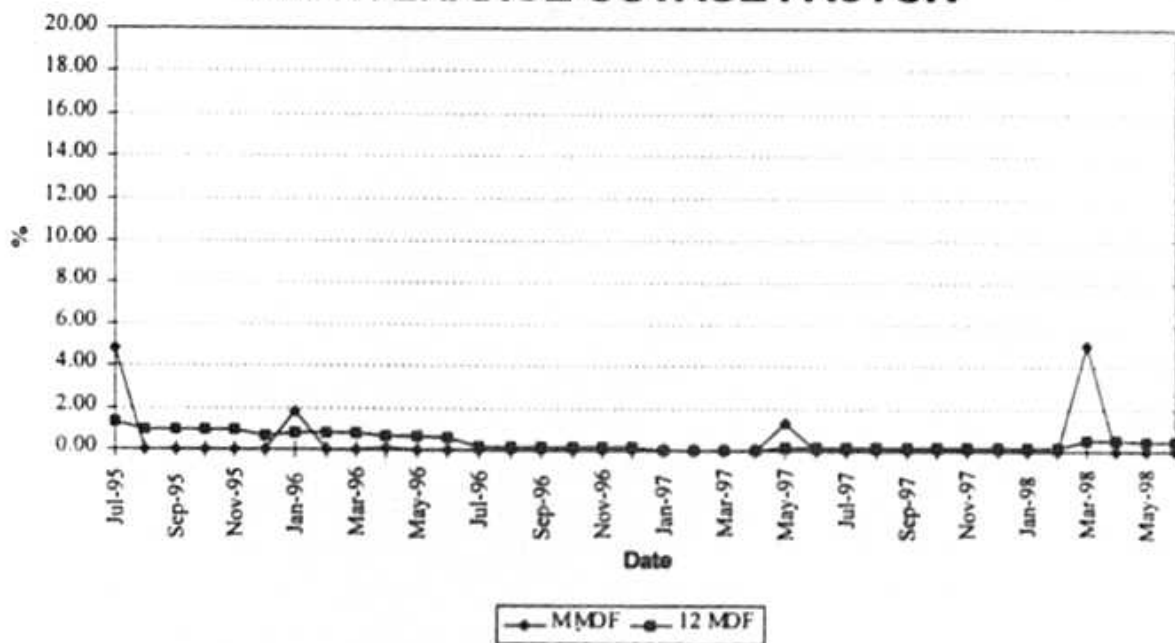
MAINTENANCE OUTAGE FACTOR



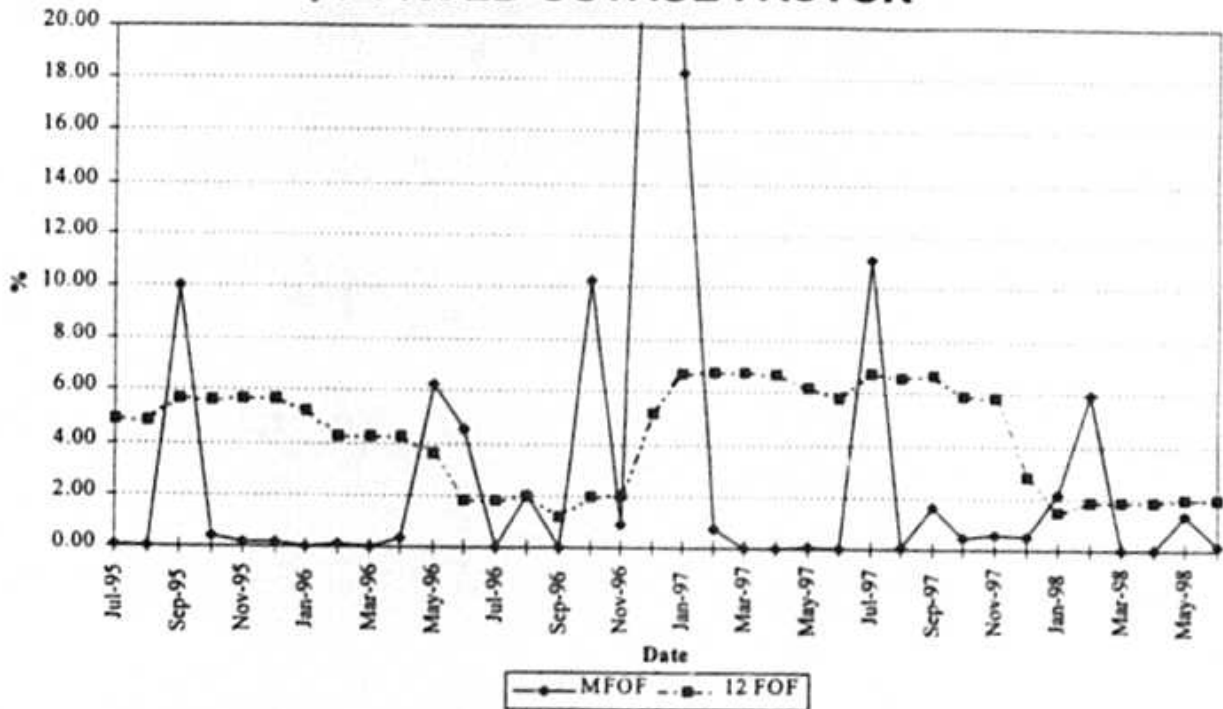
PSL 2 FORCED OUTAGE FACTOR



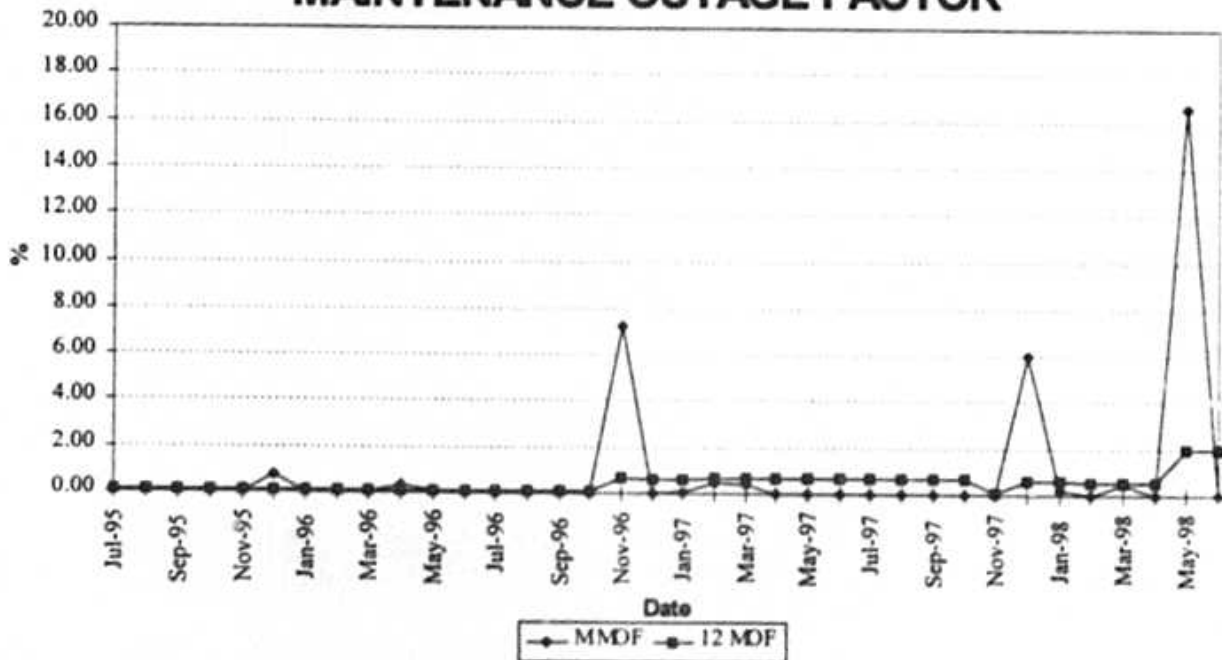
MAINTENANCE OUTAGE FACTOR



PSG 4 FORCED OUTAGE FACTOR



MAINTENANCE OUTAGE FACTOR



PLANNED OUTAGE SCHEDULE (ESTIMATED)

FLORIDA POWER & LIGHT COMPANY

Period Of: October 1998 through December 1998

<u>PLANT/UNIT</u>		<u>PLAN OUTAGE</u>	<u>REASON FOR OUTAGE</u>	<u>LR MW</u>
CAPE CANAVERAL	2	NONE		
LAUDERDALE	4	NONE		
LAUDERDALE	5	11/14/98- 12/14/98	Combustion Turbine Overhaul	452
FORT MYERS	2	NONE		
MARTIN	3	10/17/98- 11/12/98	Combustion Turbine Overhaul	215
MARTIN	4	NONE		
MANATEE	2	NONE		
PORT EVERGLADES	3	NONE		
RIVIERA	3	NONE		
RIVIERA	4	NONE		
SANFORD	5	NONE		
TURKEY POINT	3	(10/01/98)- 10/26/98	Refueling Overhaul	693
TURKEY POINT	4	NONE		
ST. LUCIE	1	NONE		
ST. LUCIE	2	11/09/98- 12/14/98	Refueling Overhaul	853
SCHERER	4	NONE		

DOCUMENT NO. 2

WITNESS: R. SILVA

DOCKET NO. 980001-EI

GENERATING PERFORMANCE INCENTIVE FACTOR

JANUARY, 1999 THROUGH DECEMBER, 1999

DOCUMENT NUMBER 1 INDEX
FLORIDA POWER & LIGHT COMPANY
PERIOD OF: JANUARY, 1999 THROUGH DECEMBER, 1999

<u>DOCUMENT</u>	<u>INDEX OF MANUAL PAGES</u>	<u>TITLE</u>
2	7.201.001	Index of Manual Pages
	7.201.002 to 7.201.003	Generating Unit Selection Criteria
	7.201.004	GPIF Reward/(Penalty) Table (Estimated)
	7.201.005	GPIF Calculation of Maximum Allowed Dollars (Estimated)
	7.201.006 and 7.201.007	GPIF Target and Range Summary
	7.201.008	GPIF Predicted Unit Heat Rates
	7.201.009	Derivation of Waiting Factors
	7.201.010	Estimated Unit Performance Data
	7.201.011 through 7.201.027	Unit MOF and FOF Versus Time Graphs
	7.201.028	Planned Outages Schedules (Estimated)

Table 2.0
POWRSYM Projected System Generation
Period Of: January 1999 Through December 1999

<u>Name</u>	<u>Unit</u>	<u>Capacity*</u> <u>(MW)</u>	<u>Service</u> <u>Hours</u>	<u>Net Output</u> <u>MWH</u>	<u>NOF</u> <u>%</u>	<u>Cumulative</u>		<u>Production</u> <u>Cost</u> <u>(\$000)</u>
						<u>% of Total</u> <u>Output</u>	<u>% of Total</u> <u>Output</u>	
St. Lucie	1	845	6840	5783127	100.1%	8.86	8.86	21289
St Lucie	2	718	7639	5495011	100.2%	8.42	17.28	21012
Turkey Point	3	703	7639	5376850	100.1%	8.24	25.52	18183
Turkey Point	4	703	6841	4816176	100.1%	7.38	32.90	16583
Scherer	4	603	7317	3681562	83.4%	5.64	38.54	66690
Martin	4	443	7443	3294396	100.0%	5.05	43.59	59539
Martin	3	443	7343	3252360	100.1%	4.98	48.58	58825
Ft. lauderdak	4	439	7449	3243422	99.1%	4.97	53.55	63594
Ft. Lauderdale	5	439	7358	3194207	98.8%	4.89	58.44	62619
Ft. Myers	2	398	7102	2594077	91.7%	3.98	62.42	54132
Sanford	4	387	6649	2083836	81.0%	3.19	65.61	46925
Sanford	5	392	6654	2039222	78.2%	3.12	68.73	46093
Manatee	2	801	3686	1905791	64.6%	2.92	71.65	46494
Riviera	3	291	6595	1663235	86.7%	2.44	74.20	36917
Cape Canaveral	2	398	5783	1625076	70.6%	2.49	76.69	37386
Port Everglades	3	398	5218	1482703	71.4%	2.27	78.96	35664
Port Everglades	4	404	5478	1457351	65.8%	2.23	81.20	35217
Riviera	4	291	5863	1419461	67.9%	2.18	83.37	31568
Cape Canaveral	1	398	5196	1390817	67.2%	2.13	85.50	32189
Manatee	1	801	2724	1284858	58.9%	1.97	87.47	31513
Turkey Point	1	402	4179	1080679	64.3%	1.66	89.13	26518
St. Johns River	2	120	8040	958862	99.4%	1.47	90.60	12827
St. Johns River	1	120	8040	957205	99.2%	1.47	92.06	12912
Turkey Point	2	401	3380	911269	5.6%	1.40	93.46	22368
Putnam	1	249	3796	867317	91.9%	1.33	94.79	20046
Putnam	2	249	3738	847553	91.2%	1.30	96.09	19630
Ft. Myers	1	141	6047	687022	80.3%	1.05	97.14	15758
Sanford	3	144	4722	491529	72.2%	0.75	97.90	11564
Martin	2	820	1374	465011	41.3%	0.71	98.61	12715
Port Everglades	1	211	1696	224969	62.7%	0.34	98.95	6004
Martin	1	817	738	224146	37.2%	0.34	99.30	6222
Port Everglades	2	212	1539	191186	58.5%	0.29	99.59	5167
Ft. Lauderdale GT	(1-24)	1490	271	168626	41.8%	0.26	99.85	6773
Port Everglades G	(1-12)	370	108	34213	85.6%	0.05	99.90	1417
Cutler	6	144	497	27855	38.8%	0.04	99.94	861
Ft. Myers GT	(1-12)	594	49	27299	93.8%	0.04	99.98	1630
Cutler	5	71	389	10281	37.0%	0.02	100.00	356
Totals				65258560		100.00	100.00	1005199

* Weighted average 5 months winter 7 months summer.

TABLE 3.0

FLORIDA POWER & LIGHT COMPANY
UNITS TO BE USED TO DETERMINE THE
GENERATING PERFORMANCE INCENTIVE FACTOR

PERIOD OF: JANUARY, 1999 THROUGH DECEMBER, 1999

Cape Canaveral Unit No. 2

Ft. Lauderdale Unit No. 4

Ft. Lauderdale Unit No. 5

Ft. Myers Unit No. 2

Martin Unit No. 3

Martin Unit No. 4

Manatee No. 2

Port Everglades Unit No. 3

Port Everglades Unit No. 4

Riviera Unit No. 3

Sanford Unit No. 4

Sanford Unit No. 5

Turkey Point Unit No. 3

Turkey Point Unit No. 4

St. Lucie Unit No. 1

St. Lucie Unit No. 2

Scherer Unit No. 4

GENERATING PERFORMANCE INCENTIVE FACTOR

REWARD/PENALTY TABLE (ESTIMATED)

FLORIDA POWER & LIGHT COMPANY
 PERIOD OF: JANUARY 1999 THROUGH DECEMBER 1999

Generating Performance Incentive Points (GPIF)	Fuel Savings/(Loss) (\$000)	Generating Performance Incentive Factor (\$000)
+ 10	36,759.00	19,767.72
+ 9	33,083.10	17,790.95
+ 8	29,407.20	15,814.18
+ 7	25,731.30	13,837.41
+ 6	22,055.40	11,860.63
+ 5	18,379.50	9,883.86
+ 4	14,703.60	7,907.09
+ 3	11,027.70	5,930.32
+ 2	7,351.80	3,953.54
+ 1	3,675.90	1,976.77
0	0.00	0.00
- 1	(3,587.50)	(1,976.77)
- 2	(7,175.00)	(3,953.54)
- 3	(10,762.50)	(5,930.32)
- 4	(14,350.00)	(7,907.09)
- 5	(17,937.50)	(9,883.86)
- 6	(21,525.00)	(11,860.63)
- 7	(25,112.50)	(13,837.41)
- 8	(28,700.00)	(15,814.18)
- 9	(32,287.50)	(17,790.95)
- 10	(35,875.00)	(19,767.72)

GENERATING PERFORMANCE INCENTIVE FACTOR

CALCULATION OF MAXIMUM ALLOWED INCENTIVE DOLLARS

ESTIMATED

FLORIDA POWER & LIGHT COMPANY

PERIOD OF: JANUARY 1999 THROUGH DECEMBER 1999

LINE 1	BEGINNING OF PERIOD BALANCE OF COMMON EQUITY		\$	4,805,680,000
	END OF MONTH BALANCE OF COMMON EQUITY			
LINE 2	MONTH OF JANUARY	99	\$	4,827,503,000
LINE 3	MONTH OF FEBRUARY	99	\$	4,814,120,000
LINE 4	MONTH OF MARCH	99	\$	4,826,055,000
LINE 5	MONTH OF APRIL	99	\$	4,824,699,000
LINE 6	MONTH OF MAY	99	\$	4,837,656,000
LINE 7	MONTH OF JUNE	99	\$	4,859,209,000
LINE 8	MONTH OF JULY	99	\$	4,873,545,000
LINE 9	MONTH OF AUGUST	99	\$	4,886,405,000
LINE 10	MONTH OF SEPTEMBER	99	\$	4,872,838,000
LINE 11	MONTH OF OCTOBER	99	\$	4,847,395,000
LINE 12	MONTH OF NOVEMBER	99	\$	4,826,675,000
LINE 13	MONTH OF DECEMBER	99	\$	4,810,412,000
LINE 14	AVERAGE COMMON EQUITY FOR THE PERIOD (SUMMATION OF LINE1 THROUGH LINE 13 DIVIDED BY 13)		\$	4,839,399,000
LINE 15	50 BASIS POINTS			0.0025
LINE 16	REVENUE EXPANSION FACTOR			60.4525%
LINE 17	MAXIMUM ALLOWED INCENTIVE DOLLARS (LINE 14 TIMES LINE 15 DIVIDED BY LINE 16)		\$	20,013,229
LINE 18	JURISDICTIONAL SALES			83,520,329,663 KWH
LINE 19	TOTAL SALES			84,557,609,759 KWH
LINE 20	JURISDICTIONAL SEPARATION FACTOR (LINE 18 DIVIDED BY LINE 19)			98.77%
LINE 21	MAXIMUM ALLOWED JURISDICTIONAL INCENTIVE DOLLARS		\$	19,767,724

GPIF TARGET AND RANGE SUMMARY

FLORIDA POWER & LIGHT COMPANY
 PERIOD OF: JANUARY 1999 THROUGH DECEMBER 1999

Plant / Unit	Weighting Factor (%)	EAF Target (%)	EAF Range		Max. Fuel Savings (\$000's)	Max. Fuel Loss (\$000's)
			Max. (%)	Min. (%)		
Cape Canaveral 2	0.17	93.6	96.1	91.1	62.92	-62.93
Lauderdale 4	0.71	93.2	95.2	91.2	260.95	-260.92
Lauderdale 5	0.69	93.2	95.2	91.2	252.59	-252.6
Fort Myers 2	0.30	90.0	92.5	87.5	109.17	-109.46
Manatee 2	0.06	88.8	91.8	85.8	21.89	-21.89
Martin 3	1.09	92.3	94.3	90.3	402.06	-315.7
Martin 4	0.86	93.6	95.6	91.6	315.62	-313.71
Port Everglades 3	0.12	80.4	82.4	78.4	44.15	-44.28
Port Everglades 4	0.11	96.0	98.0	94.0	39.78	-39.95
Riviera 3	0.14	94.4	96.9	91.9	50.83	-50.88
Sanford 4	0.20	91.0	94.0	88.0	73.32	-73.4
Sanford 5	0.21	89.9	92.9	86.9	76.78	-76.88
Turkey Point 3	9.48	93.6	96.6	90.6	3485.66	-3485.79
Turkey Point 4	8.55	84.3	87.3	81.3	3144.75	-3144.97
St. Lucie 1	10.04	83.6	86.6	80.6	3691.61	-3689.83
St. Lucie 2	9.46	93.6	96.6	90.6	3479.08	-3479.11
Scherer 4	0.60	86.6	89.1	84.1	220.63	-222.44
	<u>42.79</u>				<u>15731.79</u>	<u>-15644.74</u>

GPIF TARGET AND RANGE SUMMARY

FLORIDA POWER & LIGHT COMPANY
 PERIOD OF: JANUARY 1999 THROUGH DECEMBER 1999

Plant / Unit	Weighting Factor (%)	ANOHR TARGET		ANOHR RANGE		Max. Fuel Savings	Max. Fuel Loss
		BTU/KWH	NOF	BTU/KWH	BTU/KWH	(\$000's)	(\$000's)
Cape Canaveral 2	1.42	9602	70.6	9393	9811	521.7	521.7
Lauderdale 4	3.20	7290	99.1	7080	7500	1177.7	1177.7
Lauderdale 5	2.20	7289	98.8	7120	7458	807.6	807.6
Fort Myers 2	3.01	9188	91.7	8925	9451	1107.6	1107.6
Manatee 2	4.64	10138	64.6	9691	10585	1706.1	1706.1
Martin 3	4.20	7016	100.1	6757	7275	1542.7	1542.7
Martin 4	4.51	6926	100	6658	7194	1659.1	1659.1
Port Everglades 3	2.88	9786	71.4	9420	10152	1060.5	1060.5
Port Everglades 4	3.42	9836	65.8	9410	10262	1256.7	1256.7
Riviera 3	1.78	9770	86.7	9522	10018	653.7	653.7
Sanford 4	4.02	9737	81	9355	10119	1479.5	1479.5
Sanford 5	3.49	9939	78.2	9587	10291	1284.6	1284.6
Turkey Point 3	6.32	11047	100.1	10780	11314	2321.4	2029.2
Turkey Point 4	5.74	11166	100.1	10908	11424	2110.7	1754.1
St. Lucie 1	3.28	10879	100.1	10712	11046	1206.6	1042.3
St. Lucie 2	2.31	10895	100.2	10744	11046	848.4	864.4
Scherer 4	0.77	10120	83.4	10002	10238	283.4	283.4
	<u>57.19</u>					<u>21028.00</u>	<u>20230.86</u>

**PROJECTED UNIT HEAT RATE EQUATIONS
FLORIDA POWER & LIGHT COMPANY
JANUARY, 1999 THROUGH DECEMBER, 1999**

Plant/Unit	ANOHR	NOF	NSC	ANOHR Equation		Bounds	R-sqr	First	Last	Exclusions
				a	b					
Cape Canaveral 2	9602	70.6	397	10026.0	-6.00	209.0	0.12	07-95	06-98	08-97, 11-97
Lauderdale 4	7290	99.1	430	8479.0	-12.00	210.0	0.39	07-95	06-98	
Lauderdale 5	7289	98.8	430	8573.0	-13.00	169.0	0.49	07-95	06-98	
Fort Myers 2	9188	91.7	397	10747.0	-17.00	263.0	0.47	07-95	06-98	11-96, 06-98
Manatee 2	10138	64.6	798	11042.0	-14.00	447.0	0.14	07-95	06-98	06-98
Martin 3	7016	100.1	430	7917.0	-9.00	259.0	0.17	07-95	06-98	
Martin 4	6926	100.0	430	7526.0	-6.00	268.0	0.07	07-95	06-98	01-97
Port Everglades 3	9786	71.4	403	11571.0	-25.00	366.0	0.44	07-95	06-98	05-96, 02-97
Port Everglades 4	9836	65.8	403	11547.0	-26.00	426.0	0.71	07-95	06-98	1/98, 4/98, 5/98
Riviera 3	9770	86.7	290	11070.0	-15.00	248.0	0.43	07-95	06-98	
Sanford 4	9737	81.0	390	10466.0	-9.00	382.0	0.07	07-95	06-98	02-96, 06-98
Sanford 5	9939	78.2	390	10565.0	-8.00	352.0	0.04	07-95	06-98	11-95, 03-98, 06-98
Turkey Point 3	11047	100.1	693	12749.0	-17.00	267.0	0.30	07-95	06-98	03-95, 03-97
Turkey Point 4	11166	100.1	693	13969.0	-28.00	258.0	0.56	07-95	06-98	03-96
St. Lucie 1	10879	100.1	839	12981.0	-21.00	167.0	0.56	07-95	06-98	04-96 - 07-96, 11-97-12-97
St. Lucie 2	10895	100.2	714	14902.0	-37.00	151.0	0.75	07-95	06-98	11-95 - 12-95, 05-97
Scherer 4	10120	83.4	844	10537.0	-5.00	118.0	0.17	07-95	06-98	04-96, 10-96

Issued by: Florida Power & Light Company

Docket No.: 980001-EI
FPL Witness: R. Silva
Exhibit: No.:
Document 2 Page 8 of 28

Original Sheet No.

7.201.008

DERRIVATION OF WEIGHT FACTORS

FLORIDA POWER & LIGHT COMPANY
PERIOD OF: JANUARY 1999 THROUGH DECEMBER 1999

PRODUCTION COSTING SIMULATION
FUEL COST (\$000'S)

Unit	Performance Indicator	At Target (1)	At Maximum Improvement (2)	Savings (3)	Factor (% Of Savings)
Cape Canaveral 2	EAF	1005199	1005262	62.9	0.17
	ANHR	1005199	1005721	521.7	1.42
Ft. Lauderdale 4	EAF	1005199	1005460	260.9	0.71
	ANHR	1005199	1006377	1177.7	3.20
Ft Lauderdale 5	EAF	1005199	1005452	252.6	0.69
	ANHR	1005199	1006077	807.6	2.20
Ft. Myers 2	EAF	1005199	1005308	109.2	0.30
	ANHR	1005199	1006307	1107.6	3.01
Manatee 2	EAF	1005199	1005221	21.9	0.06
	ANHR	1005199	1006905	1706.1	4.64
Martin 3	EAF	1005199	1005601	402.1	1.09
	ANHR	1005199	1006742	1542.7	4.20
Martin 4	EAF	1005199	1005515	315.6	0.86
	ANHR	1005199	1006858	1659.1	4.51
Port Everglades 3	EAF	1005199	1005243	44.2	0.12
	ANHR	1005199	1006259	1060.5	2.88
Port Everglades 4	EAF	1005199	1005239	39.8	0.11
	ANHR	1005199	1006456	1256.7	3.42
Riviera 3	EAF	1005199	1005250	50.8	0.14
	ANHR	1005199	1005853	653.7	1.78
Sanford 4	EAF	1005199	1005272	73.3	0.20
	ANHR	1005199	1006678	1479.5	4.02
Sanford 5	EAF	1005199	1005276	76.8	0.21
	ANHR	1005199	1006484	1284.6	3.49
Turkey Point 3	EAF	1005199	1008685	3485.7	9.48
	ANHR	1005199	1007520	2321.4	6.32
Turkey Point 4	EAF	1005199	1008344	3144.8	8.55
	ANHR	1005199	1007310	2110.7	5.74
St. Lucie 1	EAF	1005199	1008891	3691.6	10.04
	ANHR	1005199	1006405	1206.6	3.28
St. Lucie 2	EAF	1005199	1008678	3479.1	9.46
	ANHR	1005199	1006047	848.4	2.31
Scherer 4	EAF	1005199	1005420	220.6	0.60
	ANHR	1005199	1005482	283.4	0.77
TOTAL				36759.8	100.00

(1) FUEL ADJUSTMENT BASE CASE - ALL UNIT PERFORMANCE INDICATORS AT TARGET

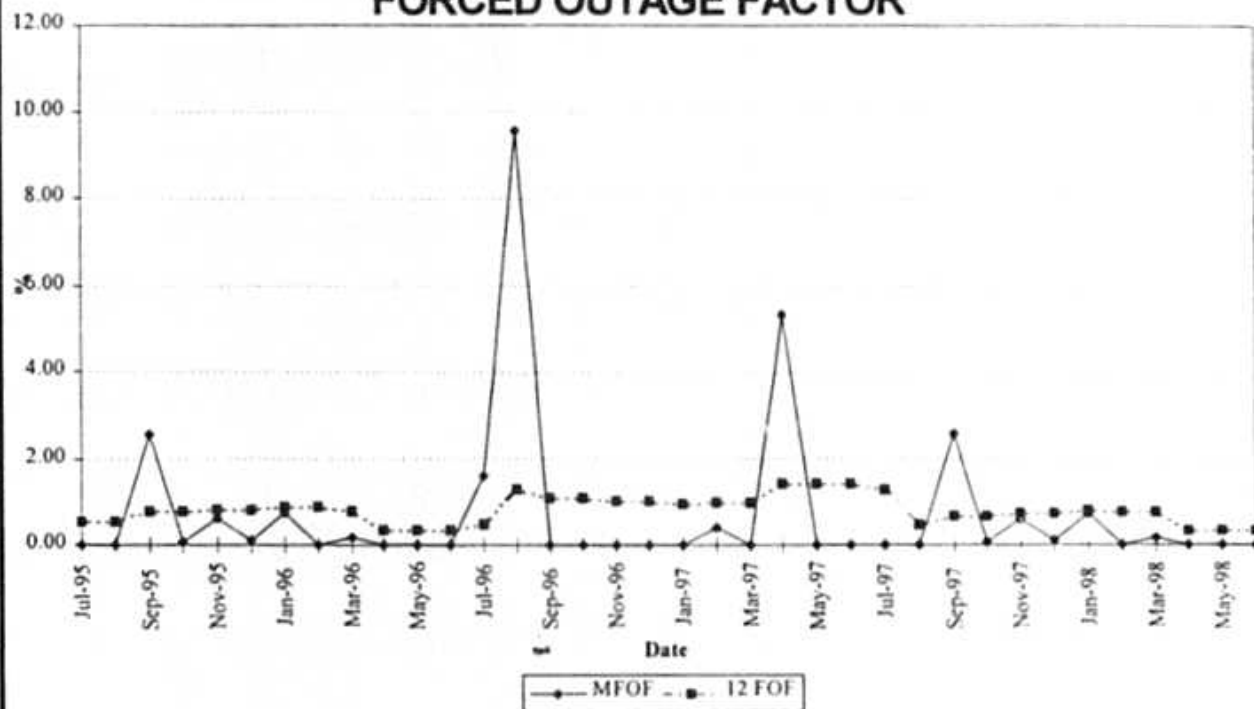
(2) ALL OTHER UNIT PERFORMANCE AT TARGET

(3) EXPRESSED IN REPLACEMENT ENERGY COSTS

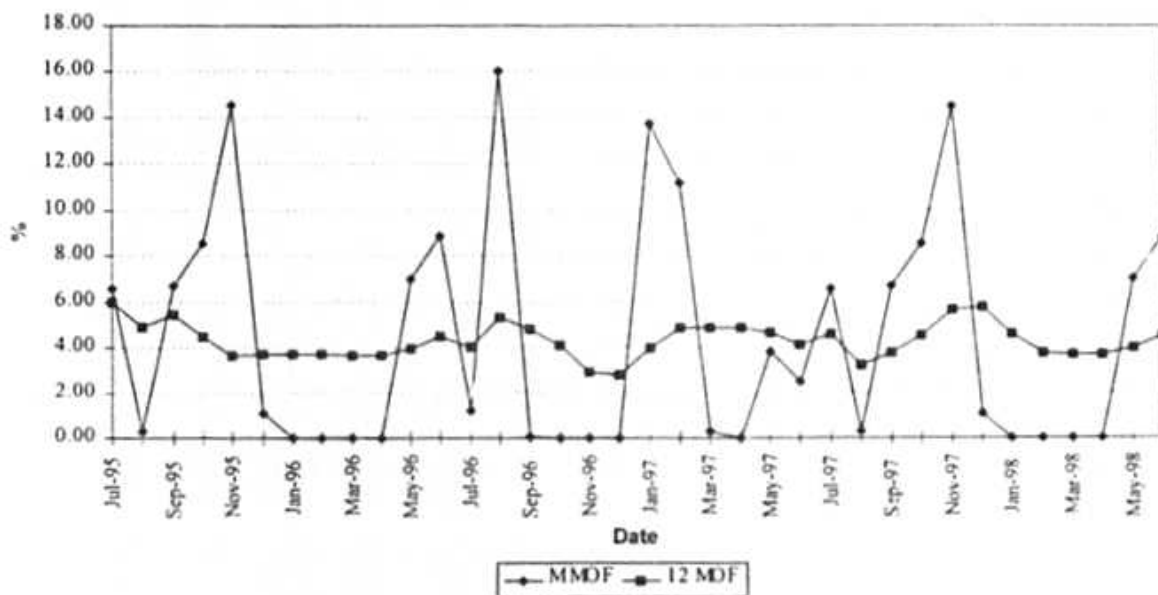
ESTIMATED UNIT PERFORMANCE DATA
 FLORIDA POWER & LIGHT COMPANY
 JANUARY, 1999 THROUGH DECEMBER, 1999

Plant/Unit	EAF	EPOF	EUOF	EUOR	PH	SH	RSH	IJH	EPOH	EFQH	EMOH	NET_GEN
Cape Canaveral 2	93.6	0.0	6.4	8.8	8760	5783	2416.4	560.6	0.0	175.2	385.4	1625076
Lauderdale 4	93.2	3.0	3.8	4.3	8760	7449	715.3	595.7	262.8	166.4	166.4	3243422
Lauderdale 5	93.2	3.0	3.8	4.3	8760	7358	806.3	595.7	262.8	166.4	166.4	3194207
Fort Myers 2	90.0	4.1	5.9	6.8	8760	7102	782.0	876.0	359.2	166.4	350.4	2594077
Manatee 2	88.8	0.0	11.2	21.0	8760	3686	4092.9	981.1	0.0	516.8	464.3	1905791
Martin 3	92.3	3.0	4.7	5.3	8760	7343	742.5	674.5	262.8	166.4	245.3	3252360
Martin 4	93.6	2.6	3.8	4.3	8760	7443	756.4	560.6	227.8	166.4	166.4	3294396
Port Everglades 3	80.4	16.2	3.4	5.4	8760	5218	1825.0	1717.0	1419.1	148.9	148.9	1482703
Port Everglades 4	96.0	0.0	4.0	6.0	8760	5478	2931.6	350.4	0.0	175.2	175.2	1457351
Riviera 3	94.4	0.0	5.6	6.9	8760	6595	1674.4	490.6	0.0	280.3	210.2	1663235
Sanford 4	91.0	0.0	9.0	10.6	8760	6649	1322.6	788.4	0.0	341.6	446.8	2083836
Sanford 5	89.9	0.0	10.1	11.7	8760	6654	1221.2	884.8	0.0	385.4	499.3	2039222
Turkey Point 3	93.6	0.0	6.4	6.8	8760	7639	560.4	560.6	0.0	280.3	280.3	5376850
Turkey Point 4	84.3	9.9	5.8	6.9	8760	6841	543.7	1375.3	867.2	254.0	254.0	4816176
St. Lucie 1	83.6	9.9	6.5	7.7	8760	6840	483.4	1436.6	867.2	315.4	254.0	5783127
St. Lucie 2	93.6	0.0	6.4	6.8	8760	7639	560.4	560.6	0.0	280.3	280.3	5495011
Scherer 4	86.6	8.5	4.9	5.5	8760	7317	269.2	1173.8	744.6	271.6	157.7	3681562

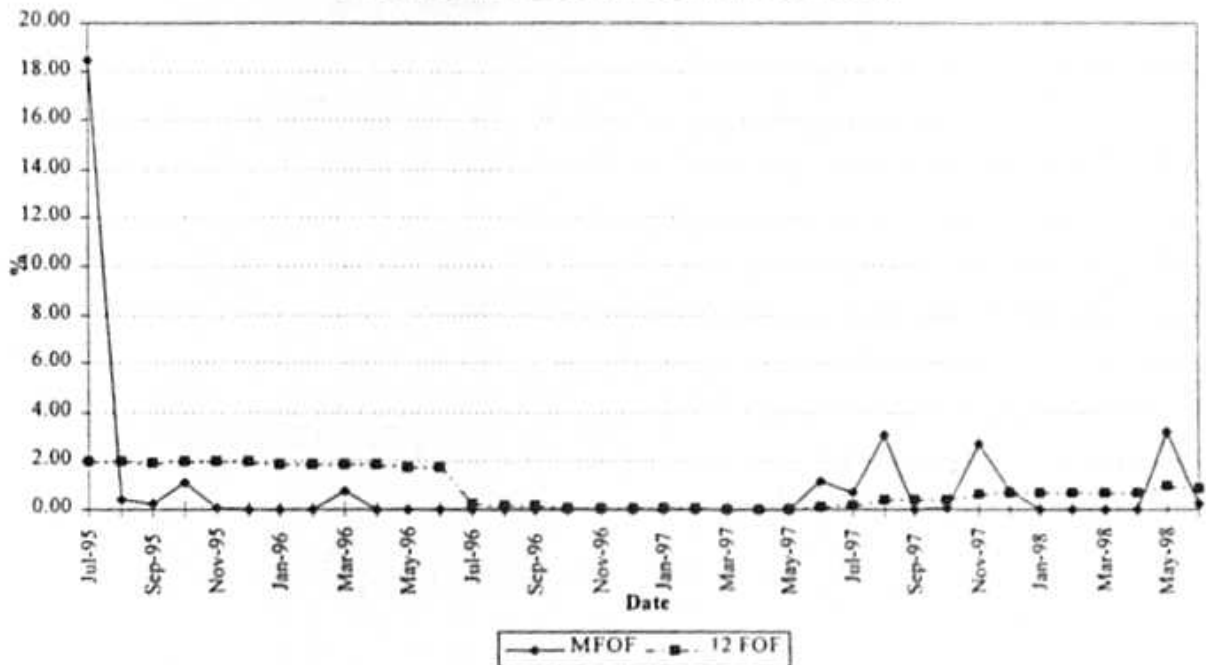
PCC 2 FORCED OUTAGE FACTOR



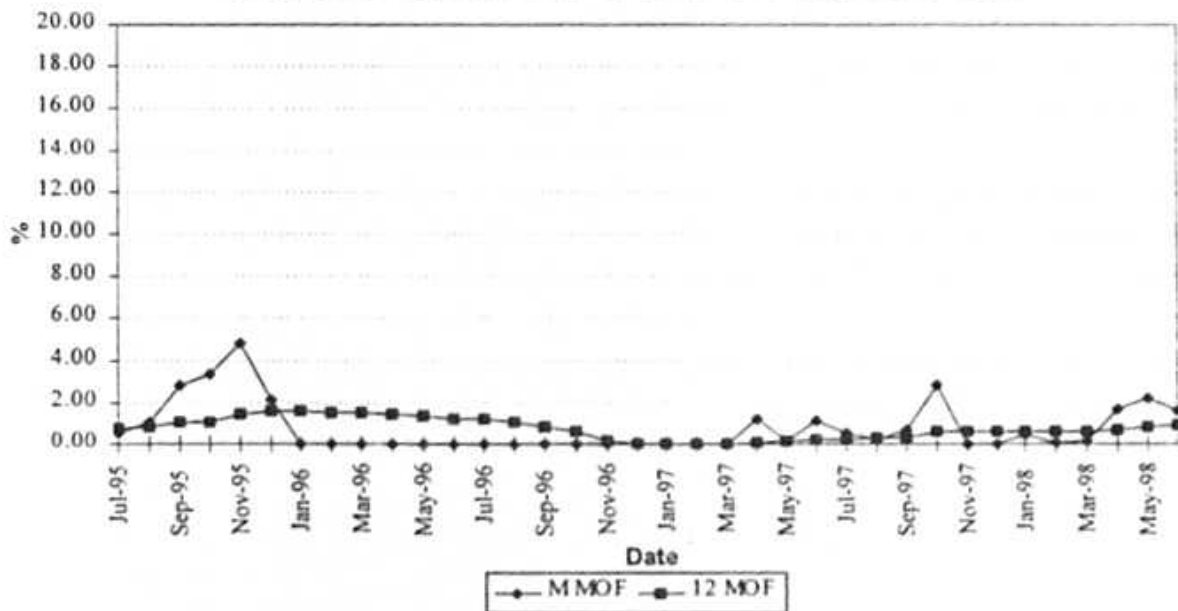
MAINTENANCE OUTAGE FACTOR



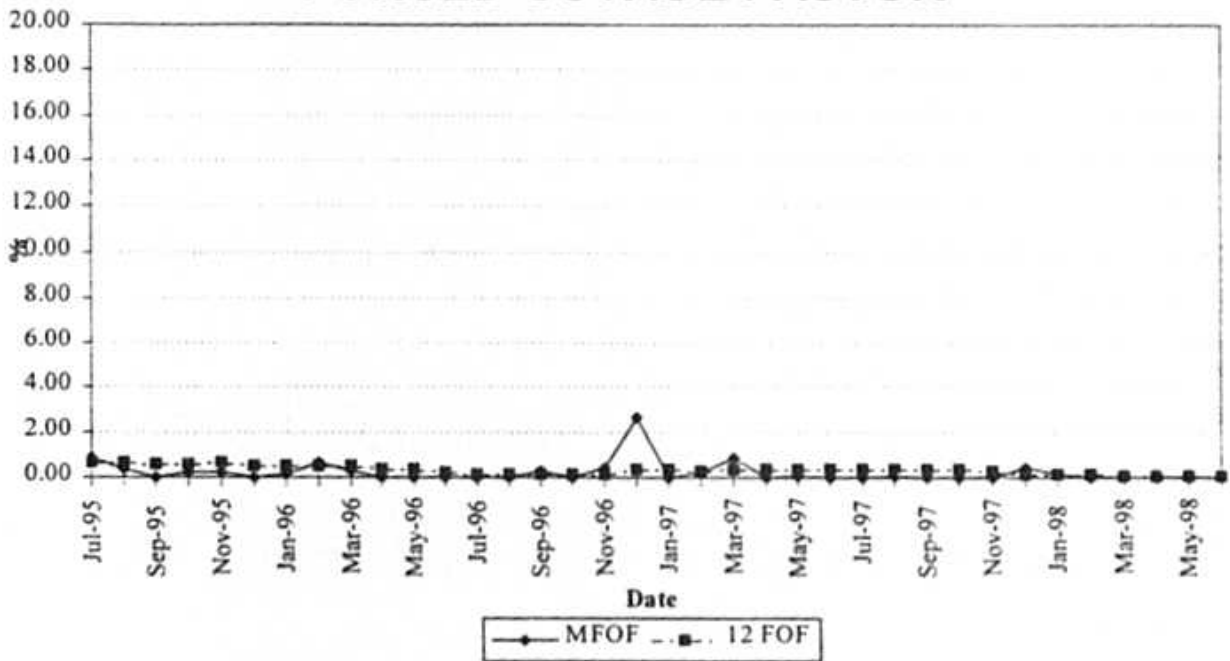
PFL 4 FORCED OUTAGE FACTOR



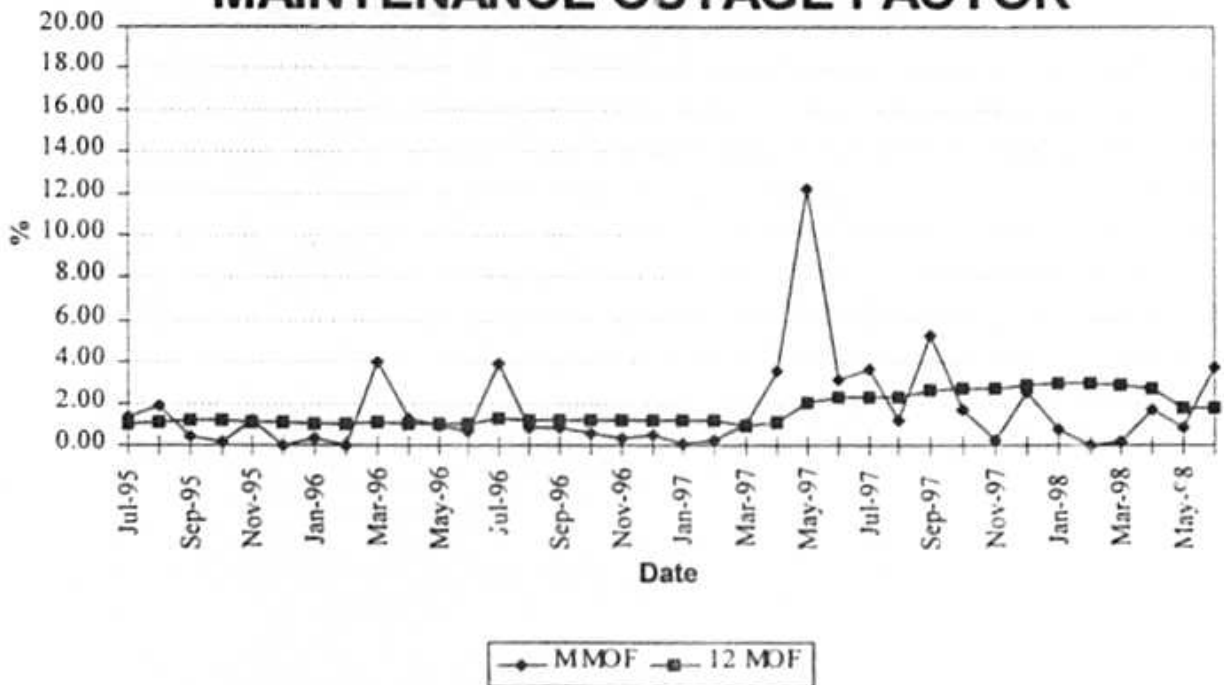
MAINTENANCE OUTAGE FACTOR



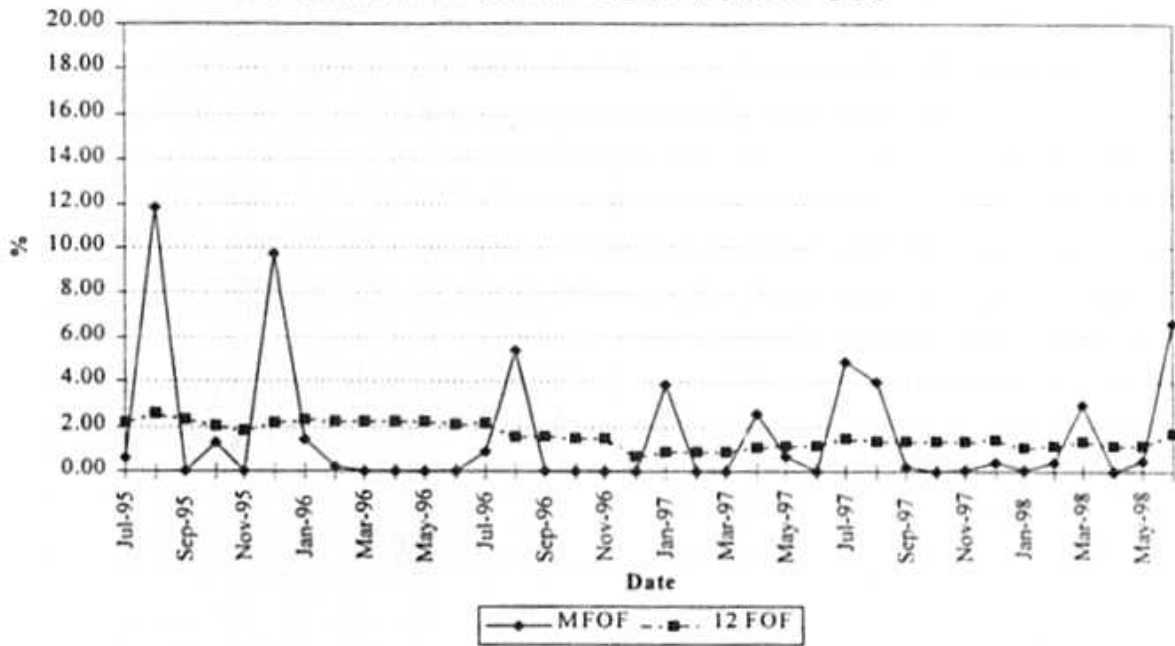
PFL 5 FORCED OUTAGE FACTOR



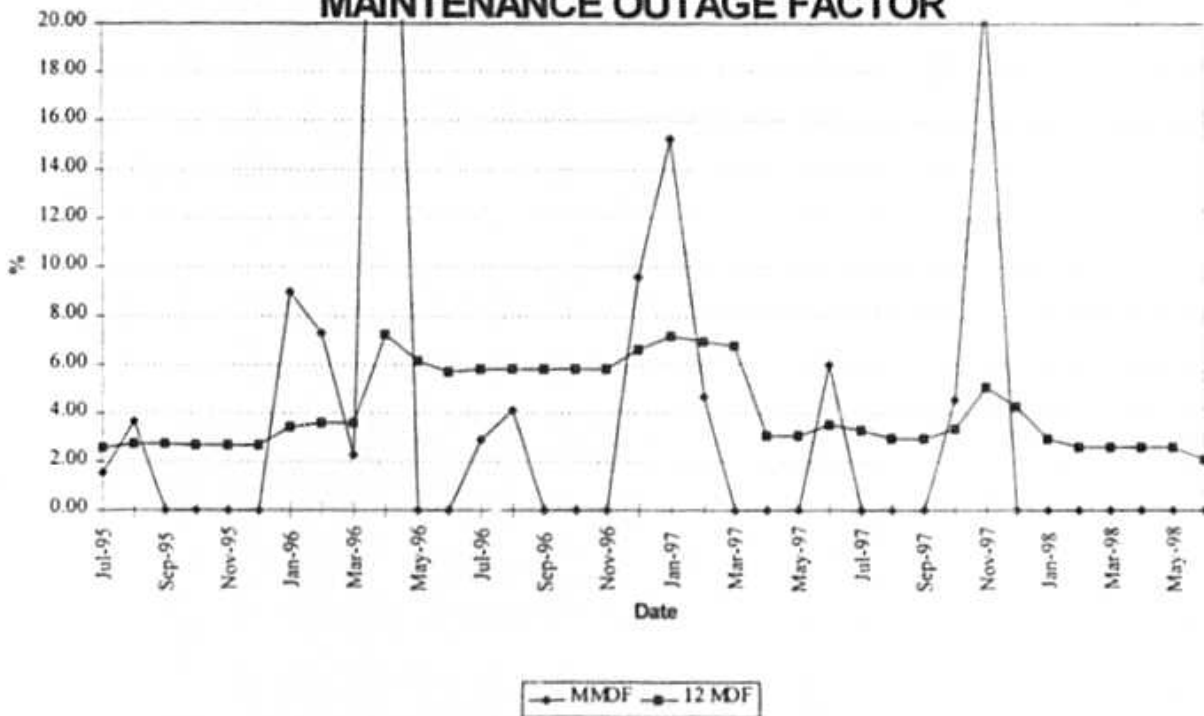
MAINTENANCE OUTAGE FACTOR



PFM 2 FORCED OUTAGE FACTOR

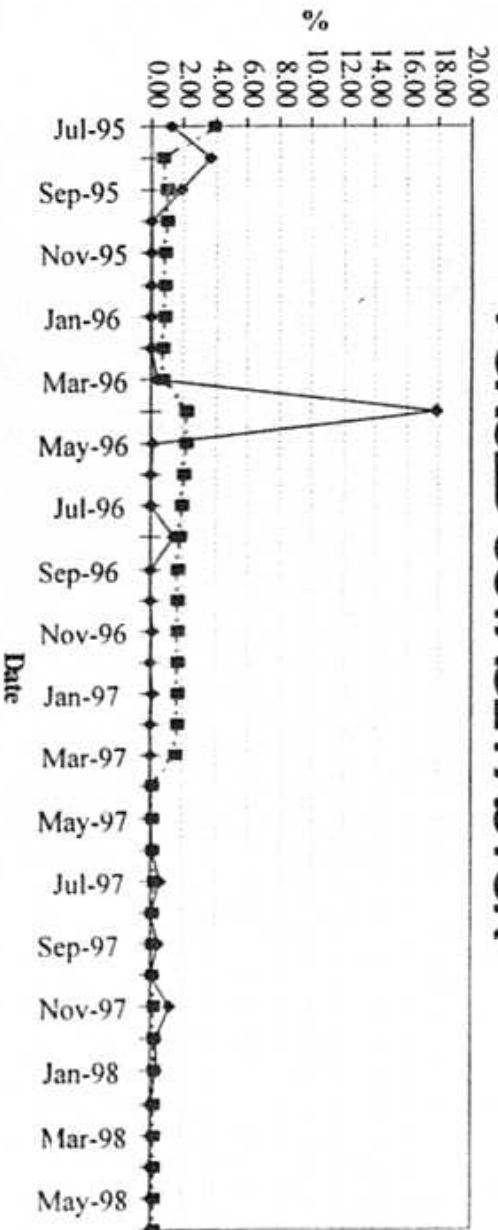


MAINTENANCE OUTAGE FACTOR

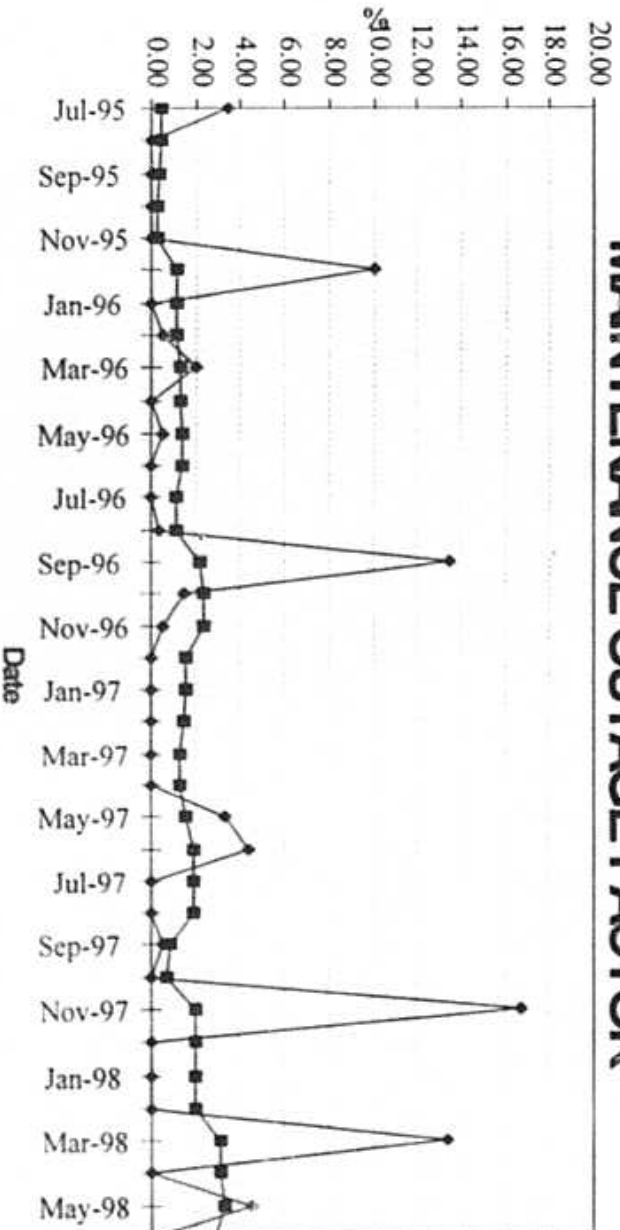


PMG 3

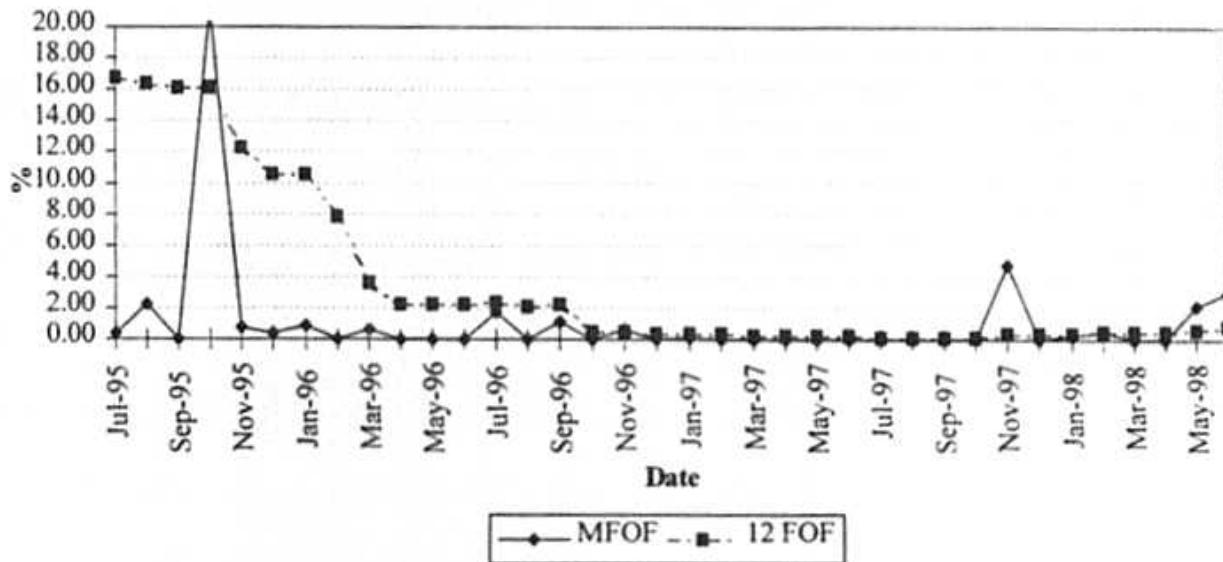
FORCED OUTAGE FACTOR



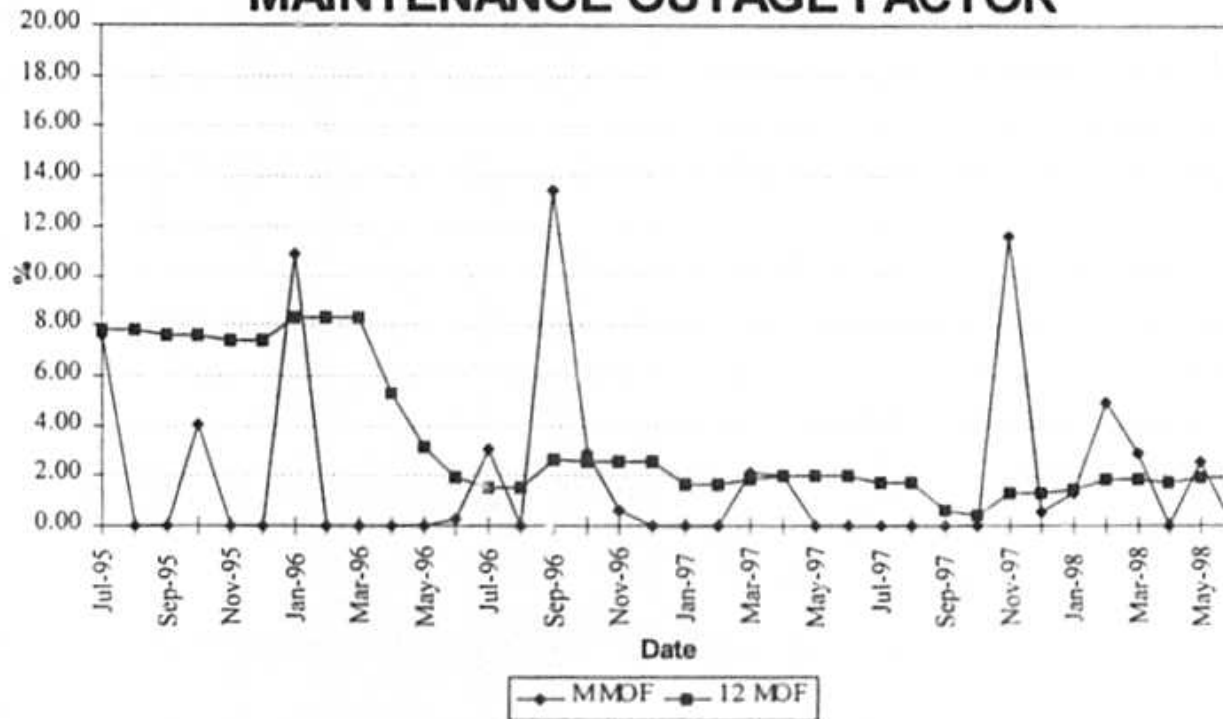
MAINTENANCE OUTAGE FACTOR



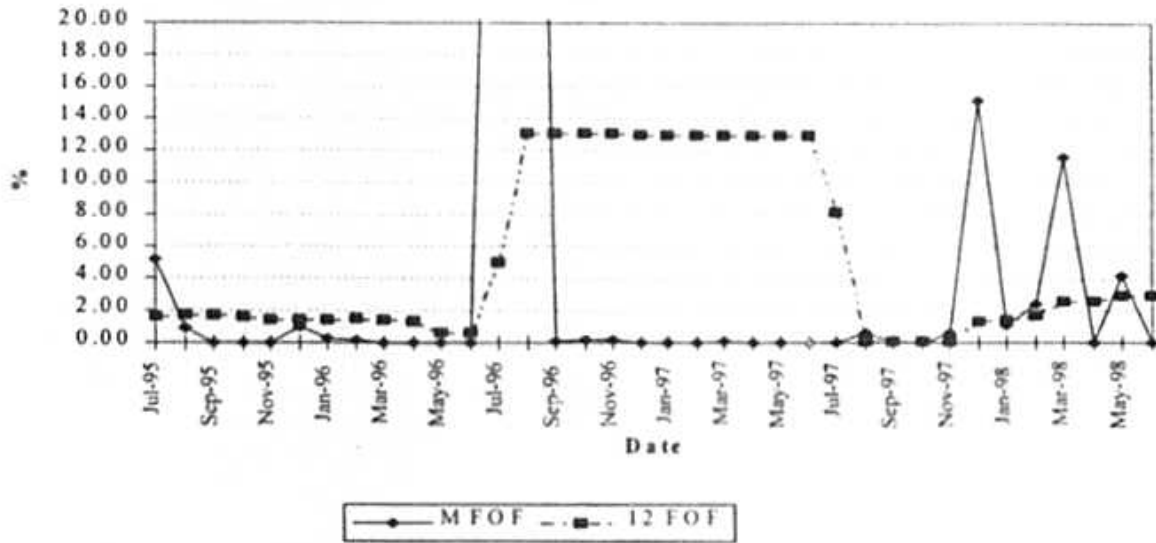
PMG 4 FORCED OUTAGE FACTOR



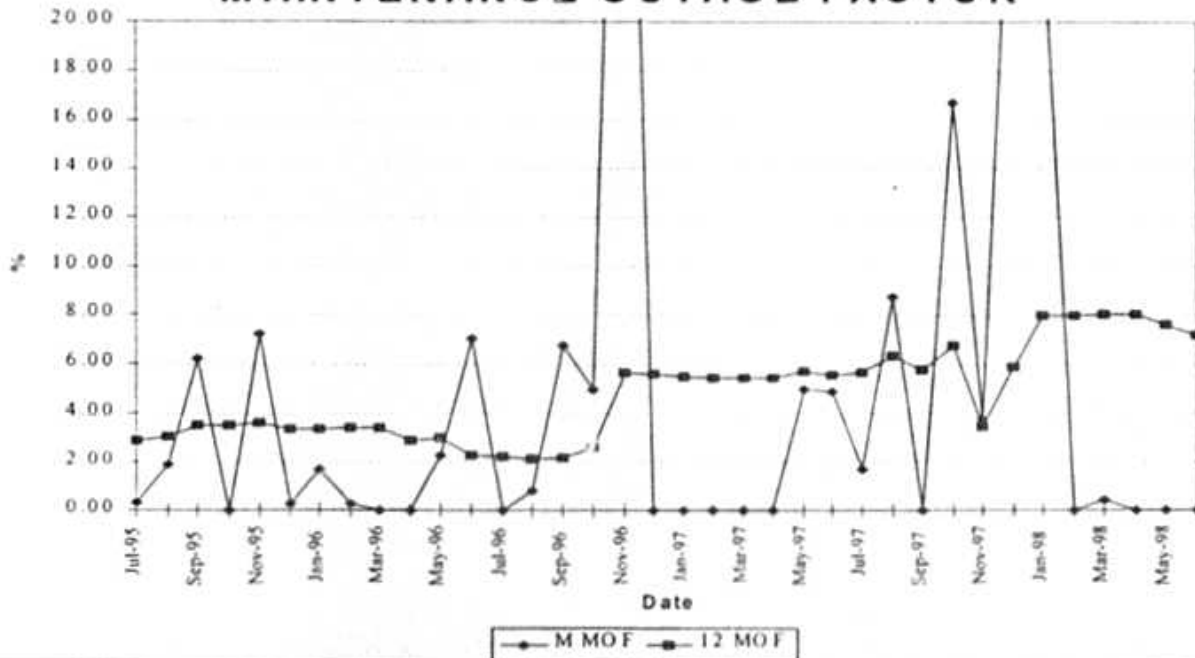
MAINTENANCE OUTAGE FACTOR



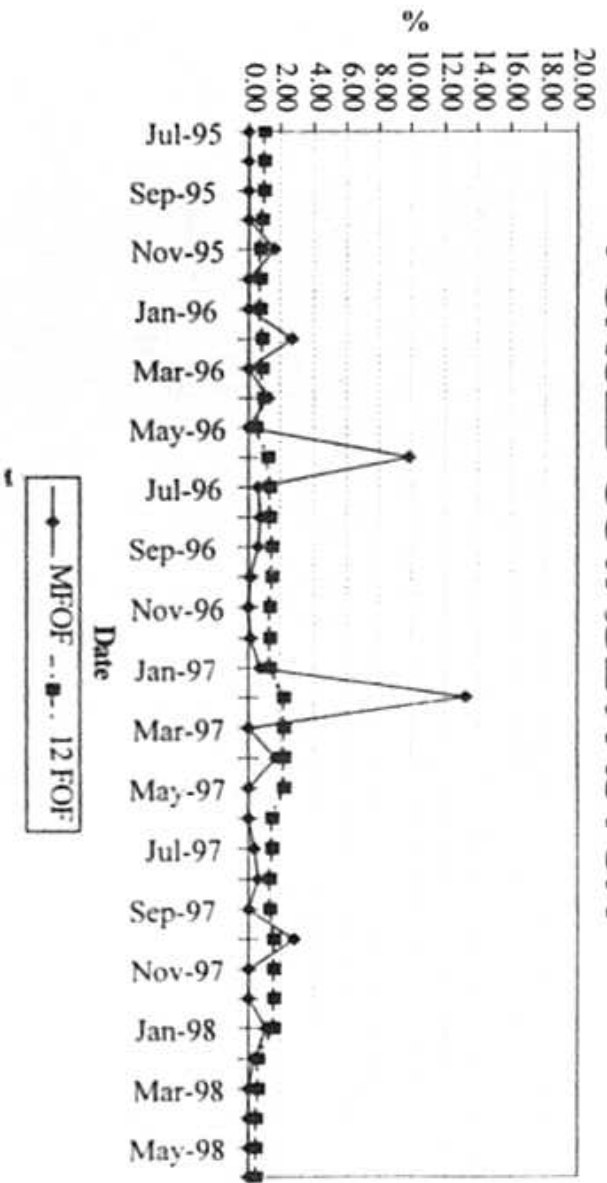
PMT 2 FORCED OUTAGE FACTOR



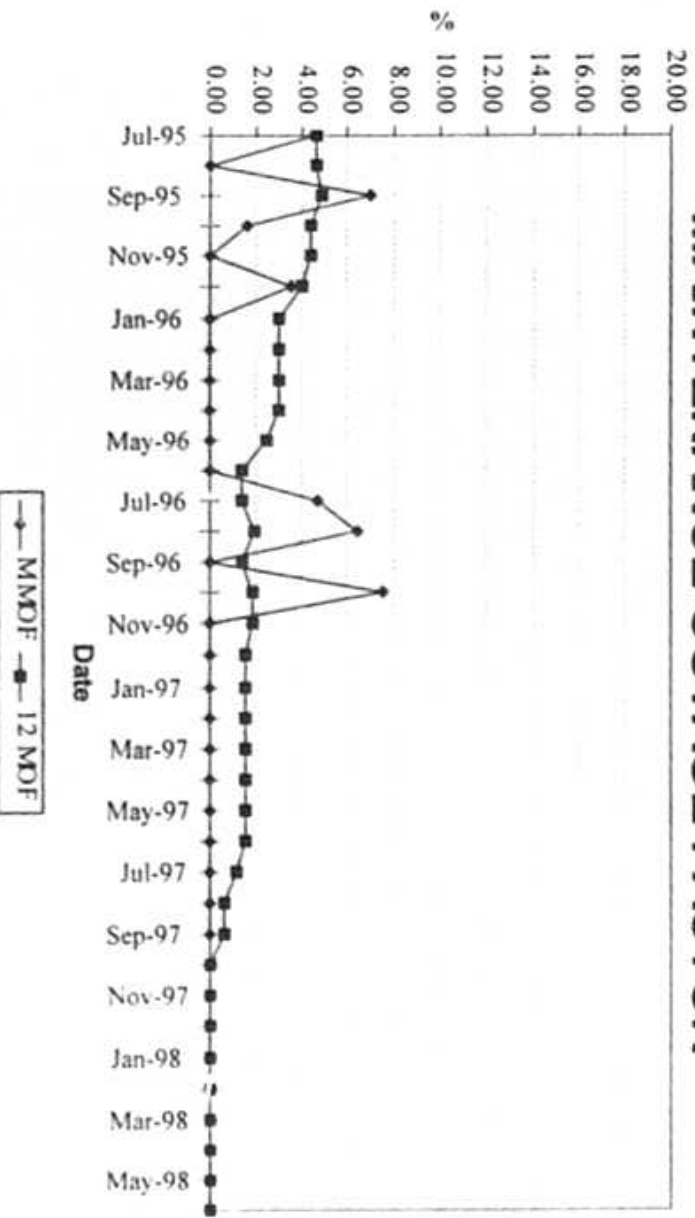
MAINTENANCE OUTAGE FACTOR



PPE 3 FORCED OUTAGE FACTOR



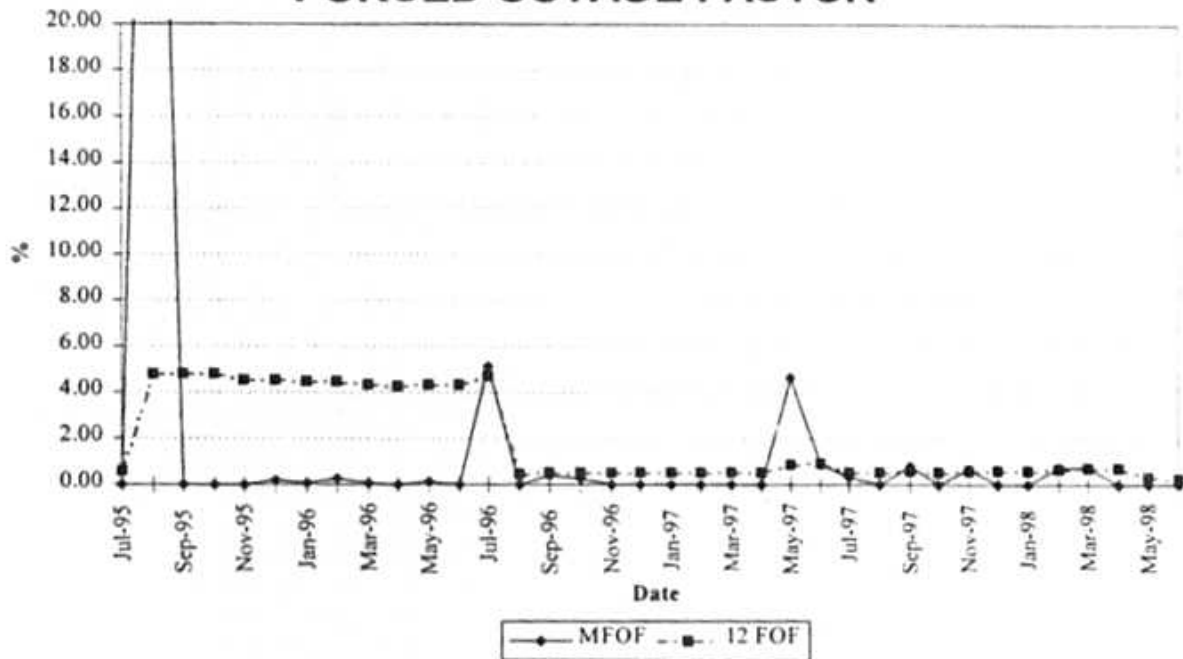
MAINTENANCE OUTAGE FACTOR



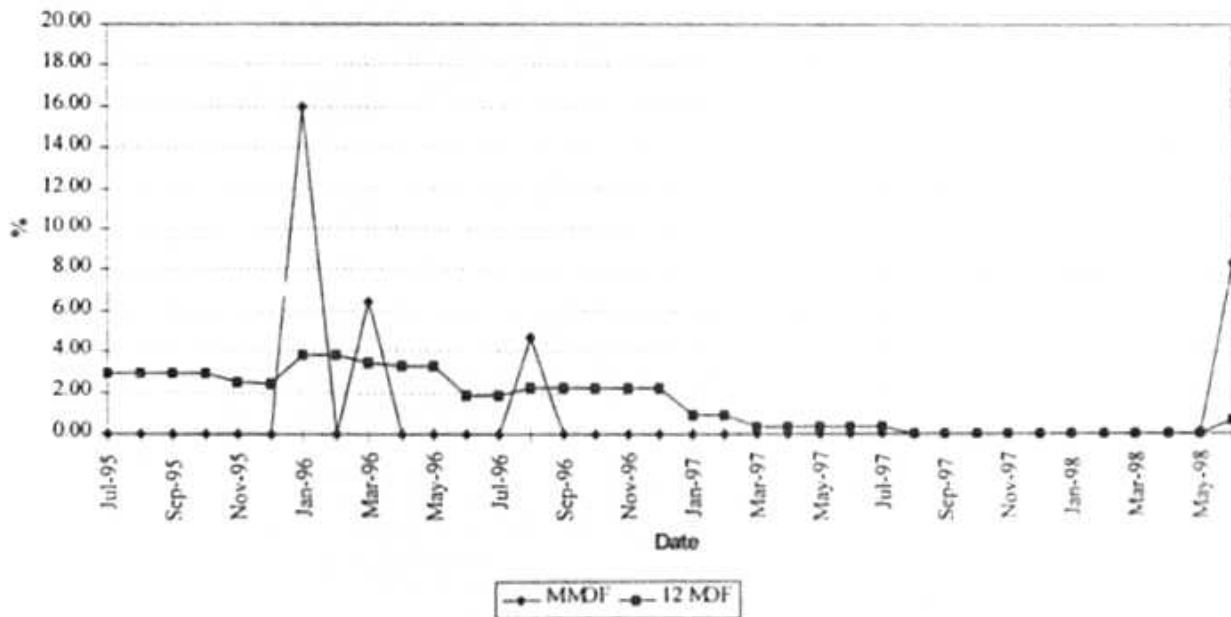
Issued by: Florida Power & Light Company

Docket No.: 980001-EI
 FPL Witness: R. Silva
 Exhibit: No.:
 Document 2 Page 18 of 28

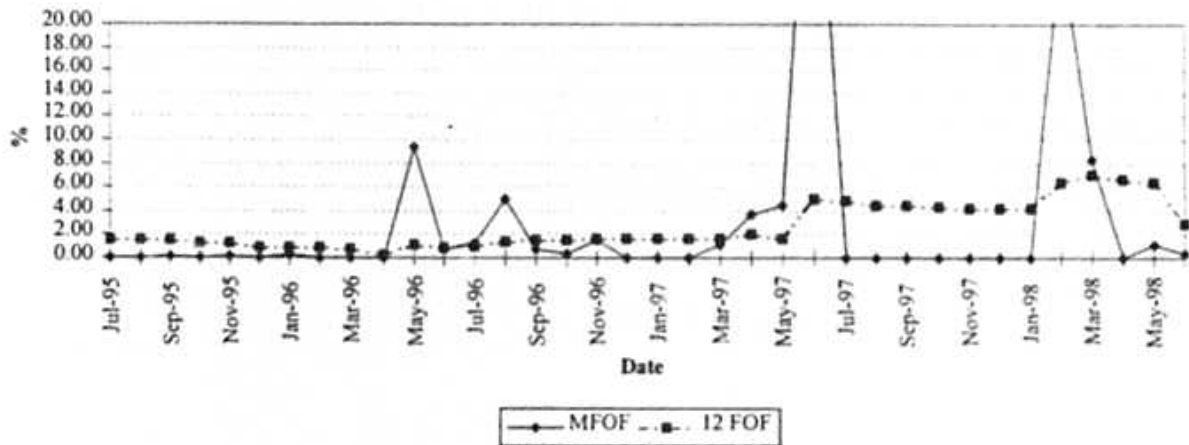
PPE 4 FORCED OUTAGE FACTOR



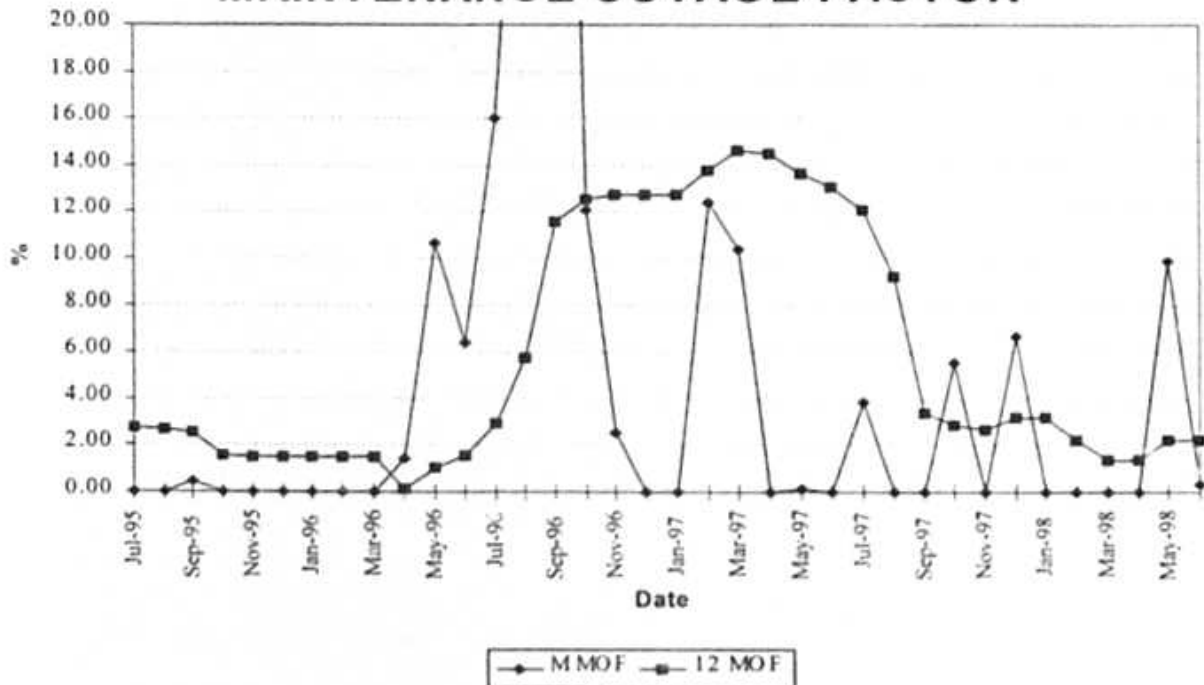
MAINTENANCE OUTAGE FACTOR



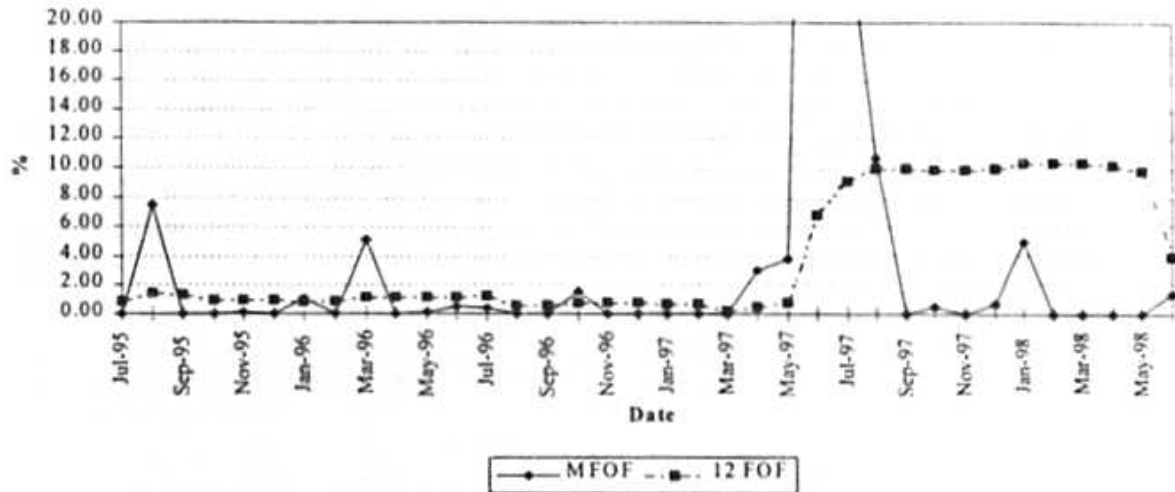
PRV 3 FORCED OUTAGE FACTOR



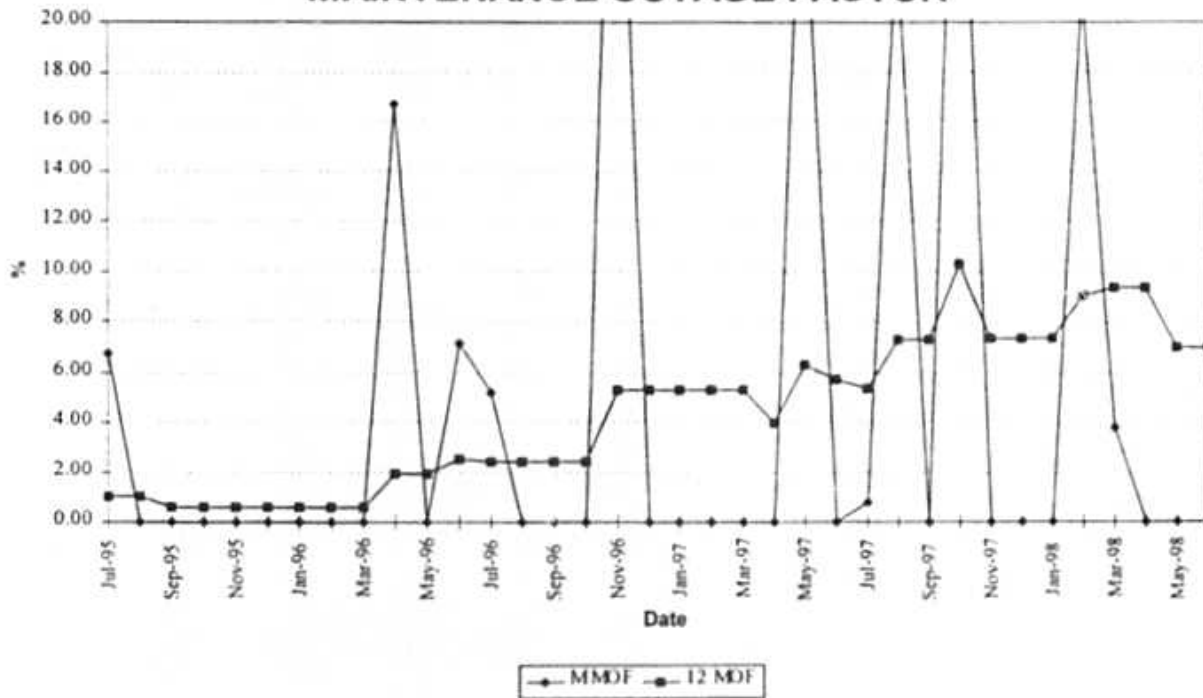
MAINTENANCE OUTAGE FACTOR



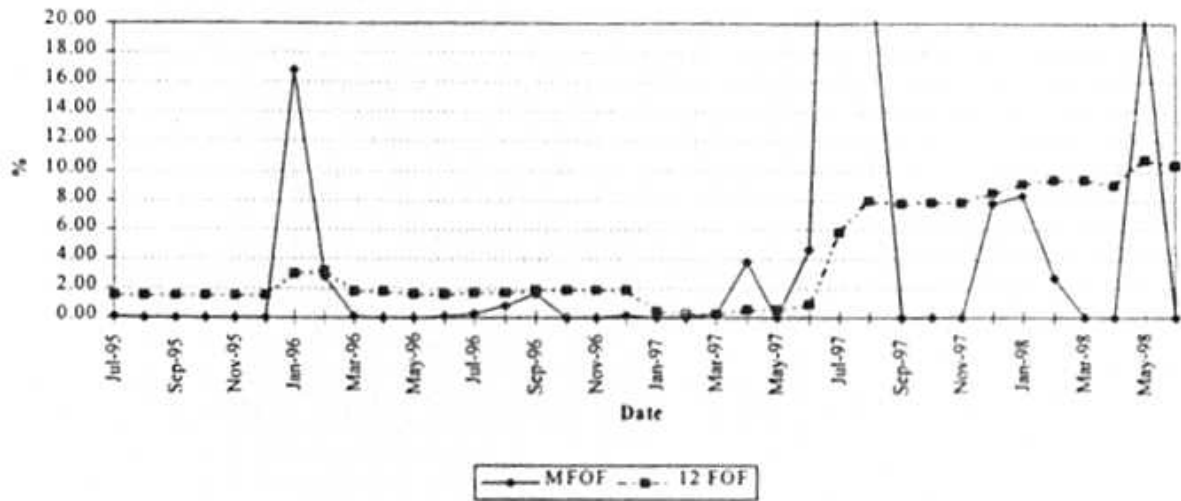
PSN 4 FORCED OUTAGE FACTOR



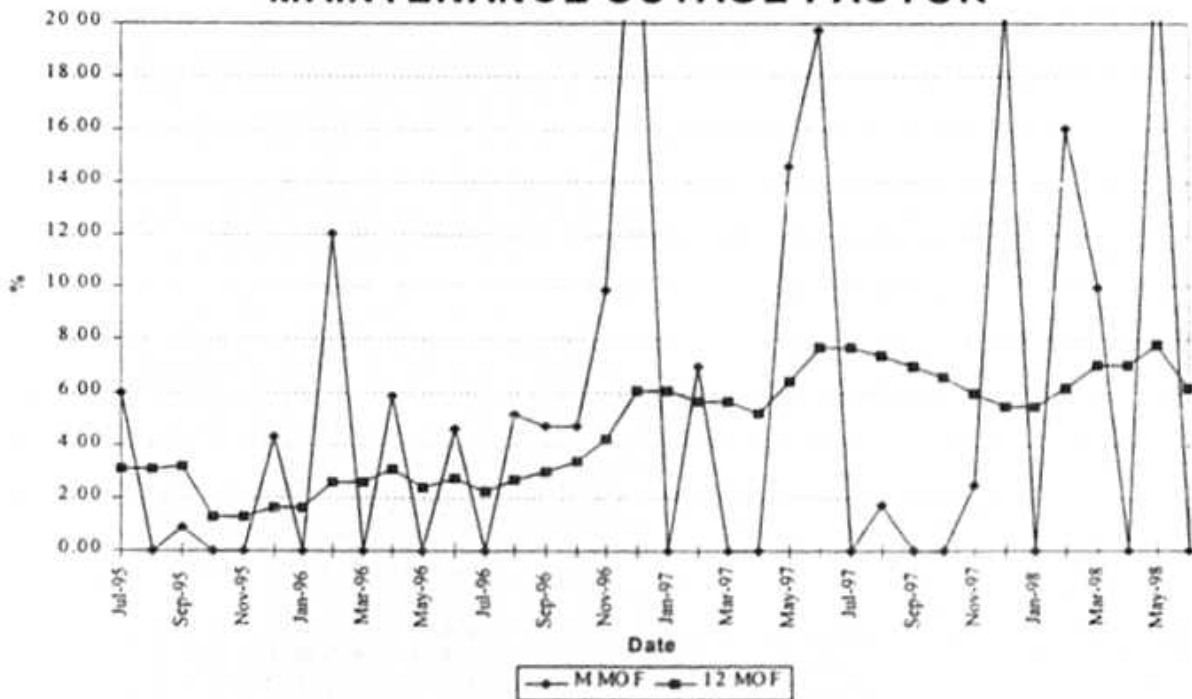
MAINTENANCE OUTAGE FACTOR



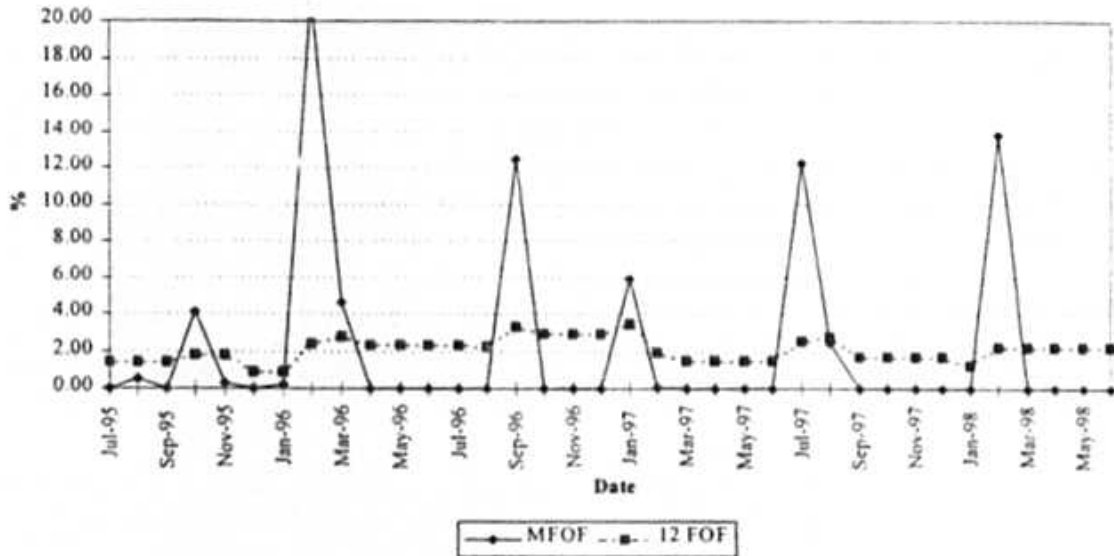
PSN 5 FORCED OUTAGE FACTOR



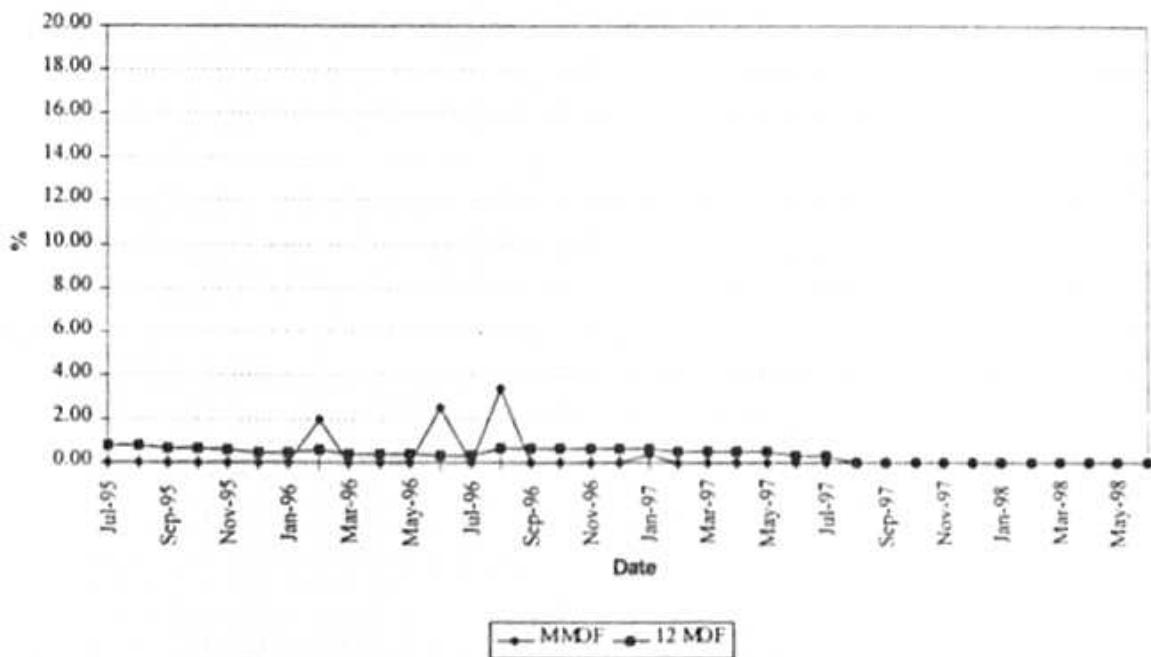
MAINTENANCE OUTAGE FACTOR



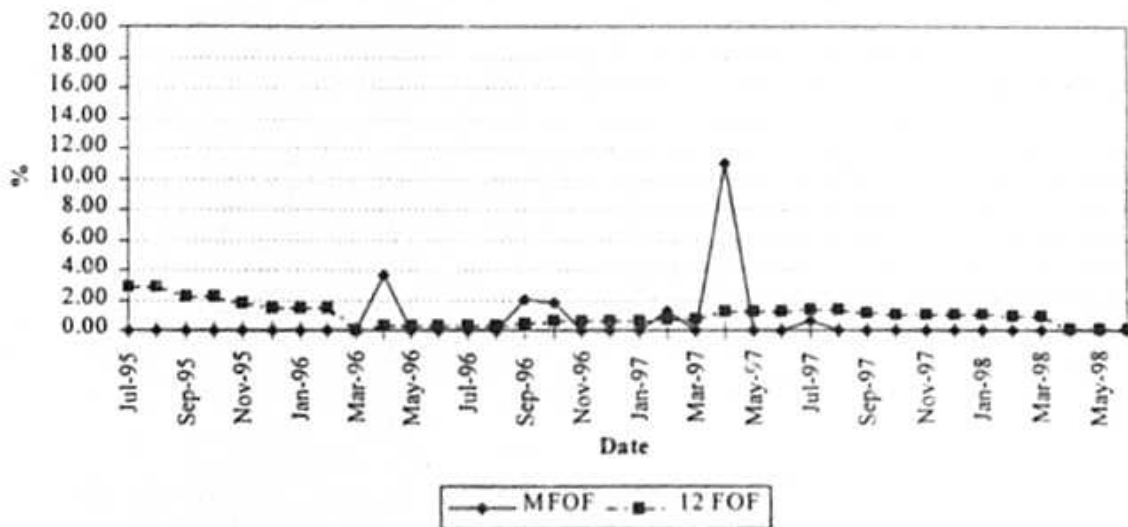
PTN 3 FORCED OUTAGE FACTOR



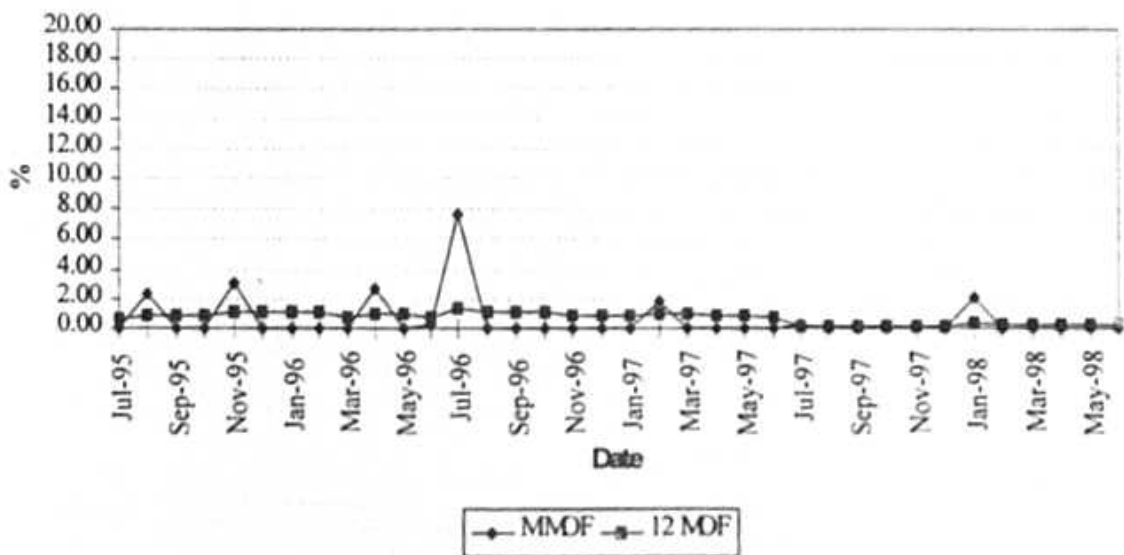
MAINTENANCE OUTAGE FACTOR



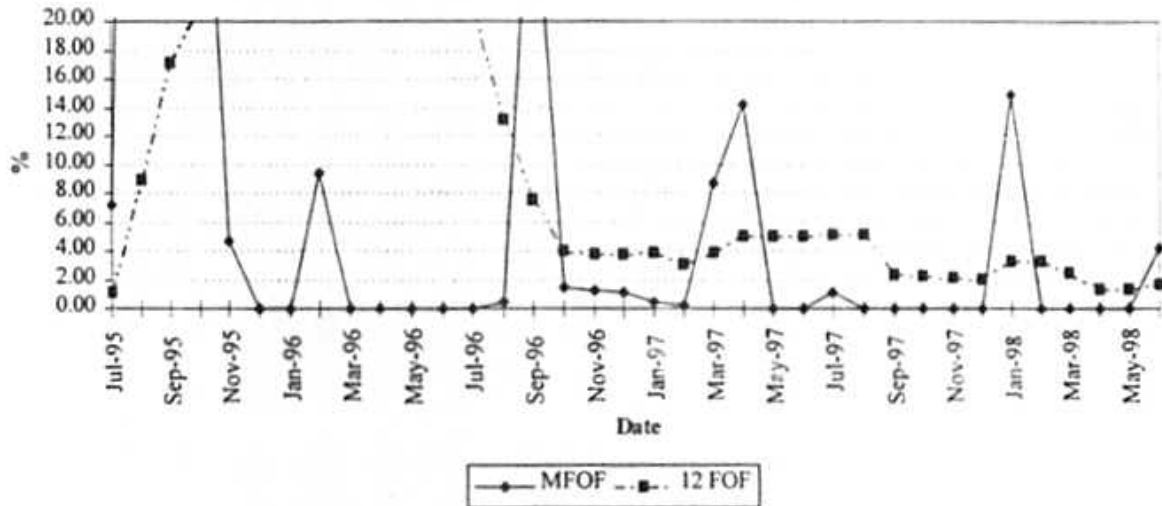
PTN 4 FORCED OUTAGE FACTOR



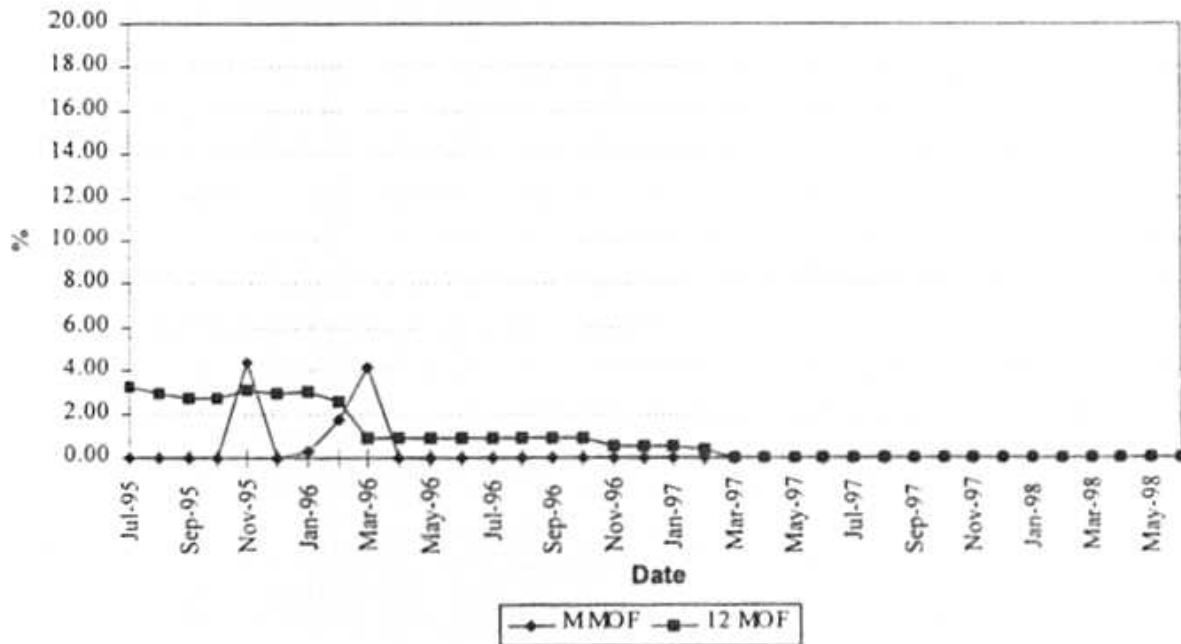
MAINTENANCE OUTAGE FACTOR



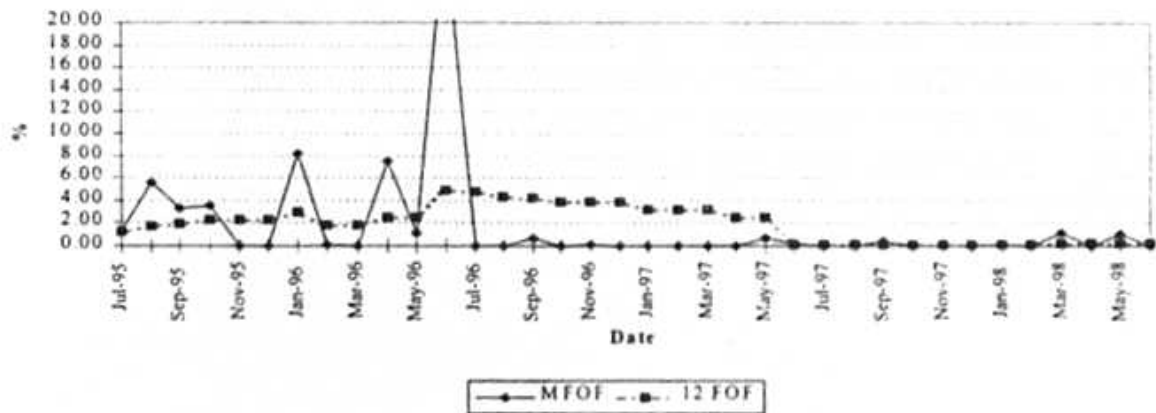
PSL 1 FORCED OUTAGE FACTOR



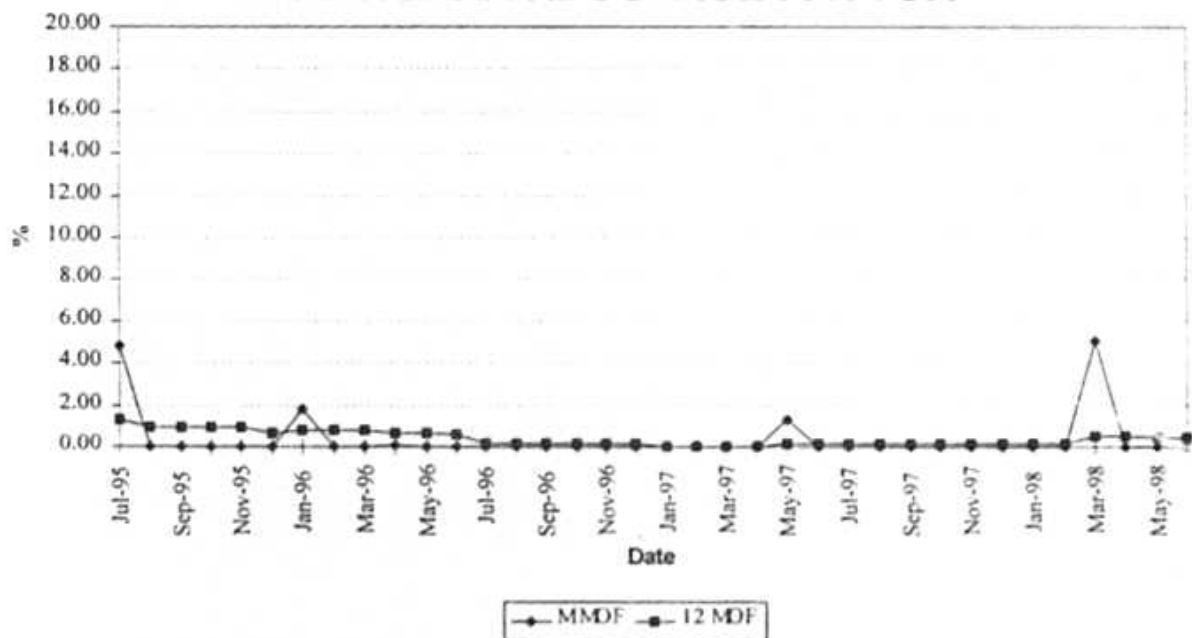
MAINTENANCE OUTAGE FACTOR



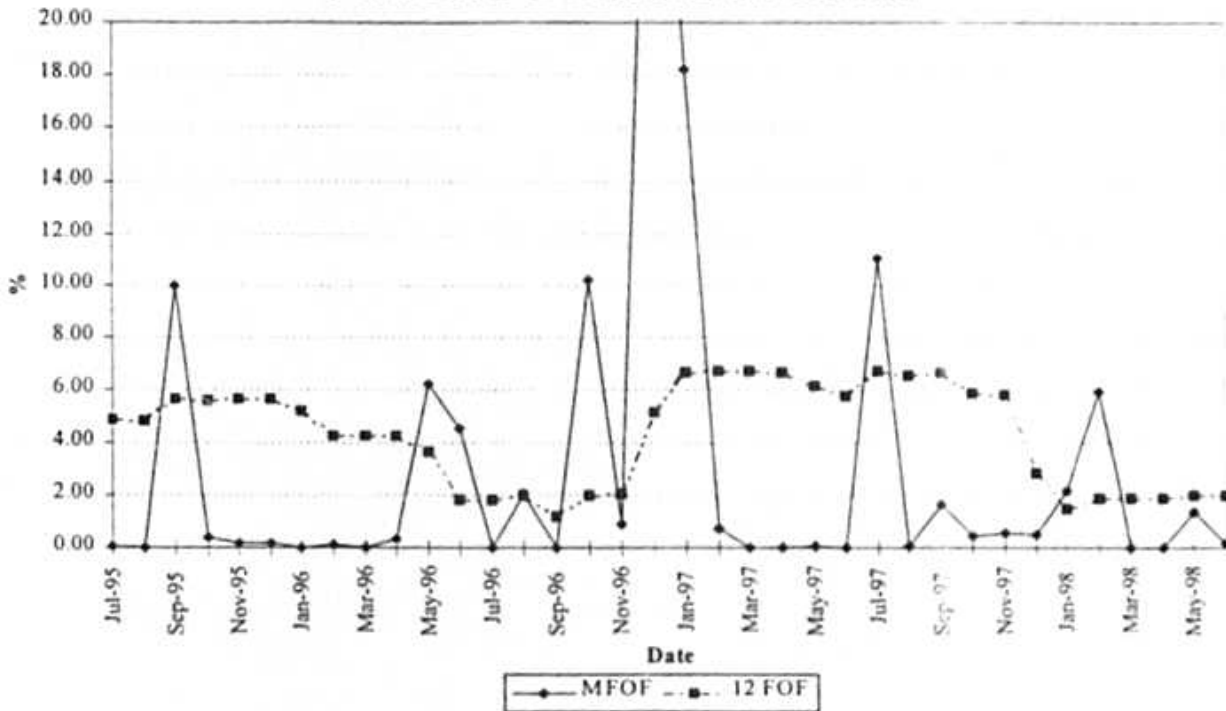
PSL 2 FORCED OUTAGE FACTOR



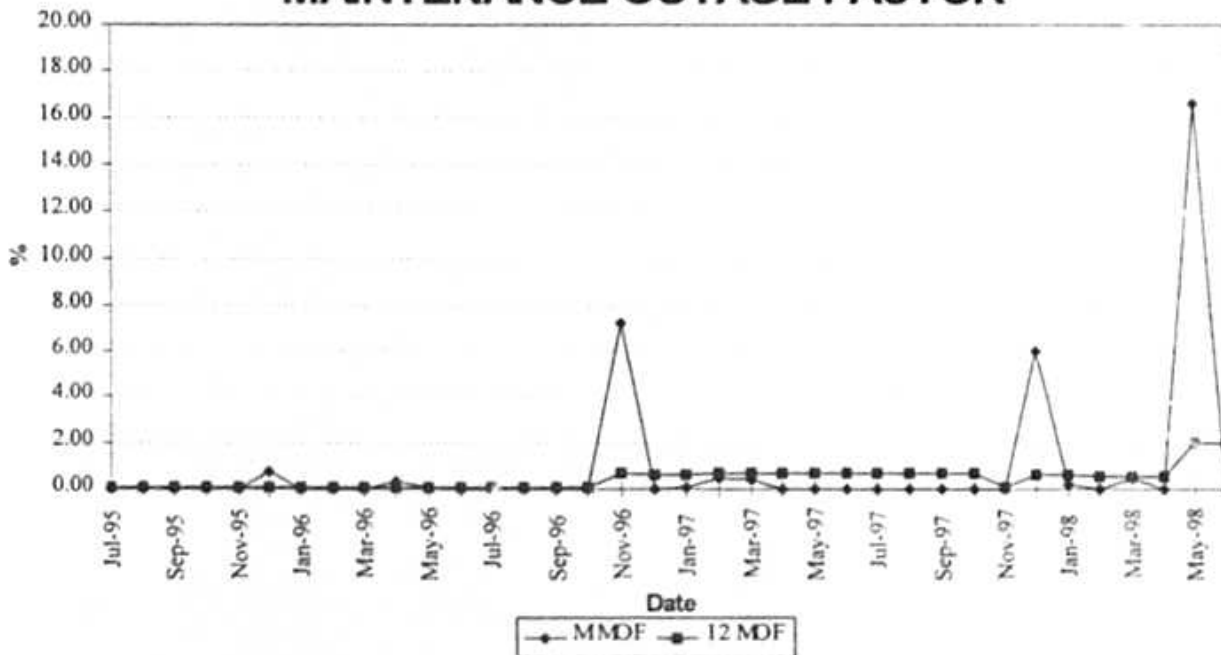
MAINTENANCE OUTAGE FACTOR



PSG 4 FORCED OUTAGE FACTOR



MAINTENANCE OUTAGE FACTOR



PLANNED OUTAGE SCHEDULE (ESTIMATED)

FLORIDA POWER & LIGHT COMPANY

Period Of: January 1999 through December 1999

<u>PLANT/UNIT</u>		<u>PLAN OUTAGE</u>	<u>REASON FOR OUTAGE</u>	<u>LR MW</u>
CAPE CANAVERAL	2	NONE		
LAUDERDALE	4	03/06/99- 03/16/99	Combustion Turbine Overhaul	452
LAUDERDALE	5	09/25/99- 10/05/99	Combustion Turbine Overhaul	430
FORT MYERS	2	03/06/99- 03/20/99	Boiler Overhaul	400
MARTIN	3	04/03/99- 04/24/99	Combustion Turbine Overhaul	215
MARTIN	4	02/27/99- 03/05/99	Combustion Turbine Overhaul	226
		09/11/99- 09/22/99	Combustion Turbine Overhaul	215
PORT EVERGLADES	3	03/06/99- 05/03/99	Turbine/Gen. Overhaul	403
PORT EVERGLADES	4	NONE		
RIVIERA	3	NONE		
RIVIERA	4	10/02/99- 11/08/99	Turbine Overhaul	290
SANFORD	4	NONE		
SANFORD	5	NONE		
TURKEY POINT	3	NONE		
TURKEY POINT	4	03/15/99- 04/19/99	Refueling Overhaul	693
ST. LUCIE	1	09/06/99- 10/11/99	Refueling Overhaul	839
ST. LUCIE	2	NONE		
SCHERER	4	10/23/99- 11/22/99	Turbine/Gen Overhaul	844