

**BEFORE THE FLORIDA
PUBLIC SERVICE COMMISSION**

**DOCKET NO. 11 0809-EI
FLORIDA POWER & LIGHT COMPANY**

**IN RE: FLORIDA POWER & LIGHT COMPANY'S
PETITION TO DETERMINE NEED FOR
MODERNIZATION OF PORT EVERGLADES PLANT**

DIRECT TESTIMONY & EXHIBIT OF:

HEATHER C. STUBBLEFIELD

COM 5
APA _____
ECR 7
GCL 2
RAD _____
SRC _____
ADM _____
OPC _____
CLK CRP

DOCUMENT NUMBER / DATE

08535 NOV 21 =

FPSC-COMMISSION CLERK

1 **BEFORE THE FLORIDA PUBLIC SERVICE COMMISSION**

2 **FLORIDA POWER & LIGHT COMPANY**

3 **DIRECT TESTIMONY OF HEATHER C. STUBBLEFIELD**

4 **DOCKET NO. 11 _____-EI**

5 **NOVEMBER 21, 2011**

6

7 **Q. Please state your name and business address.**

8 A. My name is Heather C. Stubblefield. My business address is 700 Universe
9 Boulevard, Juno Beach, Florida, 33408.

10 **Q. By whom are you employed and what position do you hold?**

11 A. I am employed by Florida Power & Light Company ("FPL") as Manager of
12 Project Development in the Energy Marketing and Trading division.

13 **Q. Please describe your duties and responsibilities in that position.**

14 A. I am responsible for evaluating gas transportation alternatives for FPL's gas-
15 fired generation expansions. This includes evaluating proposals from pipeline
16 companies, negotiating terms and conditions, and executing transportation
17 agreements which are in the best interest of FPL's customers.

18 **Q. Please describe your educational background and professional experience.**

19 A. I graduated from Auburn University with a Bachelor of Arts degree in Business
20 Administration in 1986. I joined El Paso Corporation (formerly Sonat
21 Corporation) in 1988, where I held various positions in Human Resources,
22 Internal Auditing, and the Sonat Marketing Company. In 2003, I joined FPL
23 Group Resources as the Director of Marketing for liquefied natural gas

1 initiatives. In 2005, I transferred to the Energy Marketing and Trading division
2 of FPL where my duties include evaluating gas transportation alternatives for
3 FPL's gas-fired generation expansions. This includes evaluating proposals from
4 pipeline companies, negotiating terms and conditions, and executing gas
5 transportation agreements that are in the best interest of FPL's customers.

6 **Q. Are you sponsoring any exhibits in this case?**

7 A. Yes. I am sponsoring Exhibit HCS-1, FPL's Fuel Price Forecast, which is
8 attached to my direct testimony.

9 **Q. What is the purpose of your testimony?**

10 A. The purpose of my testimony is to present and explain: (1) the fossil fuel price
11 forecast used in the evaluation of FPL's Port Everglades Next Generation Clean
12 Energy Center ("PEEC"); and (2) the proposed fuel and fuel transportation plan
13 for PEEC.

14 **Q. Please summarize your testimony.**

15 A. FPL's fossil fuel price forecast reflects the projected commodity and
16 transportation costs for fuel oil, natural gas, and coal. FPL's long-term fossil
17 fuel price forecast is reasonable for the evaluation of PEEC.

18
19 PEEC will burn natural gas as its primary fuel. PEEC currently has access to gas
20 transportation pipeline infrastructure and will require minimal infrastructure
21 upgrades, primarily associated with adding the compression necessary to meet
22 the delivery pressure requirements of the plant. Regardless of the addition of
23 PEEC, FPL will need additional natural gas supply and transportation to meet its

1 overall system requirements. FPL is currently preparing a Request for Proposals
2 (“RFP”) to meet these future gas transportation needs.

3
4 Finally, PEEC will utilize a form of light fuel oil known as ultra-low-sulfur
5 distillate as a backup fuel source in the event of a natural gas supply disruption.
6 Light fuel oil will be stored in sufficient quantities to allow PEEC to operate at
7 full capacity for seventy-two (72) hours of continuous operation and can be re-
8 supplied with both waterborne and truck deliveries.

9
10 **I. FUEL FORECAST**

11 **Q. Have you provided FPL’s forecasts for the price of fuel oil, natural gas and**
12 **coal?**

13 A. Yes. FPL’s forecasts for the price of fuel oil, natural gas and coal are provided
14 in Exhibit HCS-1.

15 **Q. What fossil fuel price forecast was used in the evaluation of FPL’s proposed**
16 **Project?**

17 A. FPL’s August 1, 2011 long-term fossil fuel price forecast was used in the
18 evaluation of PEEC.

19 **Q. What was FPL’s methodology for developing the forecast for fuel oil,**
20 **natural gas, and coal?**

21 A. For fuel oil and natural gas commodity prices, FPL’s forecast applied the
22 following methodology: (1) for 2011 through 2013, FPL used the August 1,
23 2011 forward curve for New York Harbor 1% sulfur heavy oil, U. S. Gulf Coast

1 1% sulfur heavy oil, light fuel oil, and Henry Hub natural gas commodity prices;
2 (2) for the following two years (2014 and 2015), FPL used a 50/50 blend of the
3 August 1, 2011 forward curve and projections from The PIRA Energy Group;
4 (3) for the 2016 through 2025 period, FPL used the annual projections from The
5 PIRA Energy Group; and (4) for the period beyond 2025, FPL used the rate of
6 escalation from the Energy Information Administration. In addition to the
7 development of commodity prices, price forecasts were also prepared for fuel oil
8 and natural gas transportation costs. These transportation costs, when added to
9 the projected commodity prices, resulted in the delivered price forecasts used to
10 evaluate the cost-effectiveness of PEEC. Coal prices were based on mine-mouth
11 and transportation costs provided by JD Energy, Inc. This methodology is
12 consistent with the approach to fuel forecasting used in previous filings,
13 including FPL's 2011 Ten Year Site Plan.

14 **Q. Please identify the key drivers that affect the future price of fossil fuels.**

15 A. Future fuel oil and natural gas prices, and to a much lesser extent coal prices, are
16 inherently uncertain due to a significant number of unpredictable and
17 uncontrollable drivers that influence the short and long-term prices. These
18 drivers include worldwide demand, production capacity, economic growth,
19 environmental legislation, and politics.

20 **Q. Is FPL's long-term fossil fuel price forecast reasonable for the evaluation of**
21 **capacity options such as PEEC?**

22 A. Yes. FPL's long-term fossil fuel price forecast is reasonable for the evaluation
23 of PEEC. FPL's fuel price forecasts reflect the projected supply, demand and

1 price for fuel oil, natural gas, and coal, as well as the transportation of these fuels
2 to the existing and proposed sites.

3
4 **II. FUEL TYPE AND FUEL TRANSPORTATION**

5
6 **Q. What is the primary fuel type that will be utilized in PEEC?**

7 A. PEEC will burn natural gas as the primary fuel source.

8 **Q. Does FPL currently have natural gas delivery capability to the Port
9 Everglades site?**

10 A. Yes. Under FPL's current gas transportation contracts with Florida Gas
11 Transmission Company ("FGT"), FPL has the ability to deliver natural gas to the
12 Port Everglades site via FGT's existing pipeline system; however, incremental
13 compression will have to be added to provide the necessary delivery pressure
14 that will be required for PEEC. As presented in the direct testimony of FPL
15 witness Gnecco, the cost of the infrastructure upgrades associated with the
16 addition of compression are significantly lower than the cost of building new
17 pipeline infrastructure (which would also include compression) into other
18 locations in Broward County. As previously stated, regardless of the addition of
19 PEEC, FPL's overall system requirements will necessitate the addition of gas
20 supply and transportation capacity. FPL is currently preparing an RFP to meet
21 these future system gas transportation requirements and to ensure the reliability
22 and diversity of FPL's gas transportation portfolio.

23

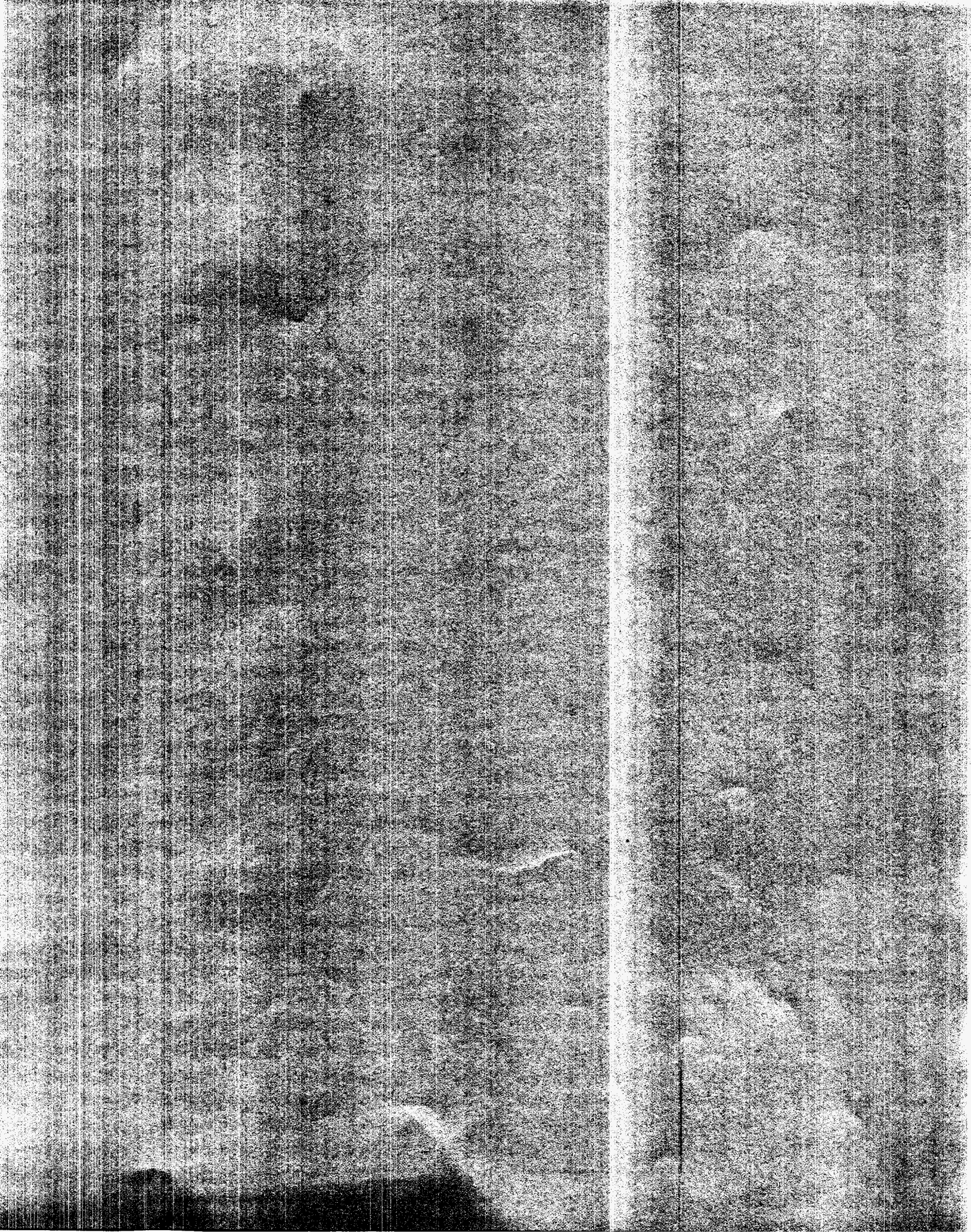
1 **Q. Will PEEC have a backup fuel source in the event of a natural gas supply**
2 **disruption?**

3 A. Yes. PEEC will be capable of burning light fuel oil in the event of a natural gas
4 supply disruption. PEEC will be able to receive light fuel oil from waterborne
5 deliveries, which is a significant advantage over inland plants. In addition, light
6 fuel oil can be trucked to the site and stored on-site. There will be sufficient
7 storage to allow the site to operate at full capacity for seventy-two (72) hours of
8 continuous operation, and the two delivery alternatives will allow for rapid and
9 flexible re-supply of light fuel oil to PEEC.

10 **Q. Does this conclude your testimony?**

11 A. Yes.

12



FPL'S NATURAL GAS PRICE FORECAST

MONTH	ZONE 1 FGT FIRM \$/MMBTU	ZONE 2 FGT FIRM \$/MMBTU	ZONE 3 FGT FIRM \$/MMBTU	ZONE 3 MOBILE BAY/DESTIN FGT FIRM \$/MMBTU	PHASE VIII ZONE 3 MOBILE BAY/DESTIN FGT FIRM \$/MMBTU	PHASE VIII TRANSCO 4A FGT FIRM \$/MMBTU	FUTURE GAS PIPELINE \$/MMBTU	FGT NON-FIRM \$/MMBTU	GULFSTREAM FIRM SESH DISPATCH PRICE \$/MMBTU	GULFSTREAM FIRM CONTRACTUAL DISPATCH PRICE \$/MMBTU	GULFSTREAM NON-FIRM \$/MMBTU	GULFSTREAM NON-FIRM BACKHAUL \$/MMBTU	HENRY HUB \$/MMBTU
2011	\$4.36	\$4.44	\$4.53	\$4.57	\$4.63	\$4.54		\$4.93	\$4.37	\$4.50	\$5.09	\$5.48	\$4.27
2012	\$4.77	\$4.85	\$4.94	\$4.98	\$4.97	\$4.88		\$5.34	\$4.79	\$4.90	\$5.49	\$5.88	\$4.66
2013	\$5.23	\$5.31	\$5.39	\$5.44	\$5.43	\$5.34		\$5.80	\$5.24	\$5.35	\$5.95	\$6.33	\$5.10
2014	\$5.47	\$5.55	\$5.63	\$5.67	\$5.66	\$5.58		\$6.03	\$5.47	\$5.58	\$6.18	\$6.56	\$5.32
2015	\$5.89	\$5.96	\$6.05	\$6.09	\$6.08	\$6.00		\$6.45	\$5.88	\$6.00	\$6.59	\$6.98	\$5.73
2016	\$6.47	\$6.55	\$6.63	\$6.67	\$6.66	\$6.71	\$6.56	\$7.03	\$6.46	\$6.57	\$7.16	\$7.55	\$6.29
2017	\$7.02	\$7.10	\$7.18	\$7.22	\$7.21		\$7.11	\$7.58	\$7.00	\$7.11	\$7.71	\$8.10	\$6.82
2018	\$7.58	\$7.66	\$7.74	\$7.79	\$7.78		\$7.68	\$8.15	\$7.55	\$7.67	\$8.26	\$8.65	\$7.36
2019	\$8.04	\$8.12	\$8.21	\$8.25	\$8.24		\$8.14	\$8.61	\$8.01	\$8.12	\$8.72	\$9.11	\$7.81
2020	\$8.52	\$8.60	\$8.68	\$8.72	\$8.71		\$8.62	\$9.08	\$8.48	\$8.59	\$9.18	\$9.58	\$8.26
2021	\$9.15	\$9.23	\$9.31	\$9.36	\$9.34		\$9.25	\$9.72	\$9.10	\$9.21	\$9.81	\$10.20	\$8.87
2022	\$9.82	\$9.89	\$9.98	\$10.02	\$10.01		\$9.92	\$10.38	\$9.76	\$9.87	\$10.46	\$10.86	\$9.51
2023	\$10.49	\$10.57	\$10.65	\$10.69	\$10.68		\$10.60	\$11.05	\$10.42	\$10.53	\$11.12	\$11.52	\$10.16
2024	\$11.44	\$11.52	\$11.60	\$11.65	\$11.63		\$11.55	\$12.01	\$11.36	\$11.47	\$12.06	\$12.46	\$11.08
2025	\$12.23	\$12.31	\$12.39	\$12.43	\$12.42		\$12.34	\$12.79	\$12.13	\$12.24	\$12.84	\$13.24	\$11.84
2026	\$12.50	\$12.57	\$12.66	\$12.70	\$12.69		\$12.61	\$13.06	\$12.39	\$12.51	\$13.10	\$13.51	\$12.09
2027	\$12.72	\$12.80	\$12.88	\$12.92	\$12.91		\$12.83	\$13.28	\$12.62	\$12.73	\$13.32	\$13.73	\$12.31
2028	\$12.95	\$13.03	\$13.11	\$13.15	\$13.14		\$13.06	\$13.51	\$12.84	\$12.95	\$13.55	\$13.95	\$12.53
2029	\$13.18	\$13.26	\$13.34	\$13.39	\$13.38		\$13.30	\$13.75	\$13.07	\$13.18	\$13.78	\$14.18	\$12.75
2030	\$13.42	\$13.50	\$13.58	\$13.62	\$13.61		\$13.54	\$13.98	\$13.30	\$13.42	\$14.01	\$14.42	\$12.98
2031	\$13.66	\$13.74	\$13.82	\$13.87	\$13.85		\$13.78	\$14.23	\$13.54	\$13.66	\$14.25	\$14.66	\$13.22
2032	\$13.91	\$13.98	\$14.07	\$14.11	\$14.10		\$14.02	\$14.47	\$13.79	\$13.90	\$14.49	\$14.90	\$13.45
2033	\$14.16	\$14.23	\$14.32	\$14.36	\$14.35		\$14.28	\$14.72	\$14.03	\$14.14	\$14.74	\$15.15	\$13.69
2034	\$14.41	\$14.49	\$14.57	\$14.62	\$14.61		\$14.53	\$14.98	\$14.28	\$14.40	\$14.99	\$15.40	\$13.94
2035	\$14.67	\$14.75	\$14.83	\$14.88	\$14.86		\$14.79	\$15.24	\$14.54	\$14.65	\$15.25	\$15.66	\$14.19
2036	\$14.94	\$15.01	\$15.10	\$15.14	\$15.13		\$15.06	\$15.50	\$14.80	\$14.91	\$15.51	\$15.92	\$14.44
2037	\$15.21	\$15.28	\$15.37	\$15.41	\$15.40		\$15.33	\$15.77	\$15.06	\$15.18	\$15.77	\$16.18	\$14.70
2038	\$15.48	\$15.56	\$15.64	\$15.68	\$15.67		\$15.60	\$16.04	\$15.33	\$15.45	\$16.04	\$16.45	\$14.97
2039	\$15.76	\$15.83	\$15.92	\$15.96	\$15.95		\$15.88	\$16.32	\$15.61	\$15.72	\$16.31	\$16.73	\$15.23
2040	\$16.04	\$16.12	\$16.20	\$16.24	\$16.23		\$16.16	\$16.60	\$15.89	\$16.00	\$16.59	\$17.01	\$15.51
2041	\$16.33	\$16.41	\$16.49	\$16.53	\$16.52		\$16.45	\$16.89	\$16.17	\$16.28	\$16.88	\$17.29	\$15.78
2042	\$16.62	\$16.70	\$16.78	\$16.83	\$16.82		\$16.75	\$17.19	\$16.46	\$16.57	\$17.17	\$17.58	\$16.07
2043	\$16.92	\$17.00	\$17.08	\$17.13	\$17.11		\$17.05	\$17.49	\$16.76	\$16.87	\$17.46	\$17.88	\$16.36
2044	\$17.23	\$17.30	\$17.39	\$17.43	\$17.42		\$17.35	\$17.79	\$17.06	\$17.17	\$17.76	\$18.18	\$16.65
2045	\$17.54	\$17.61	\$17.70	\$17.74	\$17.73		\$17.66	\$18.10	\$17.36	\$17.47	\$18.07	\$18.48	\$16.95
2046	\$17.85	\$17.93	\$18.01	\$18.06	\$18.04		\$17.98	\$18.42	\$17.67	\$17.78	\$18.38	\$18.80	\$17.25
2047	\$18.17	\$18.25	\$18.33	\$18.38	\$18.37		\$18.30	\$18.74	\$17.99	\$18.10	\$18.69	\$19.11	\$17.56

FPL'S SOLID FUEL PRICE FORECAST				
	PLANT SCHERER	ST. JOHNS RIVER POWER PARK	ICL	CEDAR BAY
	DISPATCH PRICE WITHOUT SO2 & NOx	DISPATCH PRICE WITHOUT SO2 & NOx	DISPATCH PRICE WITHOUT SO2 & NOx	DISPATCH PRICE WITHOUT SO2 & NOx
YEAR	<u>\$/MMBTU</u>	<u>\$/MMBTU</u>	<u>\$/MMBTU</u>	<u>\$/MMBTU</u>
2011	\$2.32	\$3.51	\$4.11	\$4.12
2012	\$2.39	\$3.51	\$3.86	\$4.07
2013	\$2.45	\$3.51	\$3.86	\$3.95
2014	\$2.47	\$3.52	\$3.94	\$3.53
2015	\$2.50	\$3.53	\$4.01	\$3.55
2016	\$2.54	\$3.56	\$4.09	\$3.61
2017	\$2.58	\$3.58	\$4.18	\$3.65
2018	\$2.62	\$3.61	\$4.27	\$3.70
2019	\$3.34	\$3.65	\$4.37	\$3.73
2020	\$3.41	\$3.73	\$4.46	\$3.77
2021	\$3.47	\$3.78	\$4.54	\$3.82
2022	\$3.55	\$3.86	\$4.64	\$3.89
2023	\$3.61	\$3.92	\$4.73	\$3.95
2024	\$3.69	\$4.00	\$4.83	\$4.02
2025	\$3.76	\$4.07	\$4.92	\$4.08
2026	\$3.83	\$4.12	\$5.01	\$4.13
2027	\$3.91	\$4.19	\$5.12	\$4.20
2028	\$3.97	\$4.25	\$5.21	\$4.25
2029	\$4.06	\$4.32	\$5.33	\$4.32
2030	\$4.15	\$4.41	\$5.46	\$4.41
2031	\$4.23	\$4.48	\$5.58	\$4.47
2032	\$4.31	\$4.54	\$5.68	\$4.53
2033	\$4.40	\$4.63	\$5.80	\$4.61
2034	\$4.48	\$4.69	\$5.91	\$4.67
2035	\$4.57	\$4.77	\$6.03	\$4.74
2036	\$4.66	\$4.85	\$6.18	\$4.82
2037	\$4.75	\$4.92	\$6.29	\$4.90
2038	\$4.85	\$5.00	\$6.43	\$4.97
2039	\$4.94	\$5.09	\$6.56	\$5.05
2040	\$5.04	\$5.17	\$6.70	\$5.12
2041	\$5.14	\$5.25	\$6.85	\$5.20
2042	\$5.24	\$5.34	\$6.99	\$5.28
2043	\$5.35	\$5.43	\$7.14	\$5.36
2044	\$5.45	\$5.52	\$7.29	\$5.45
2045	\$5.56	\$5.61	\$7.45	\$5.53
2046	\$5.67	\$5.70	\$7.61	\$5.61
2047	\$5.78	\$5.79	\$7.77	\$5.70

FPL'S HEAVY OIL PRICE FORECAST

YEAR	MARTIN 0.7%	MARTIN 1%	PORT	MANATEE 1%	TURKEY POINT 0.7%	TURKEY POINT	CANAVERAL	SANFORD 1%	RIVIERA 1%
	\$/MMBTU	\$/MMBTU	EVERGLADES 1%	\$/MMBTU	\$/MMBTU	1%	1%	\$/MMBTU	\$/MMBTU
2011	\$17.15	\$16.28	\$16.27	\$16.27	\$17.15	\$16.22	\$16.28	\$16.28	\$16.28
2012	\$17.53	\$16.63	\$16.63	\$16.63	\$17.53	\$16.57	\$16.63	\$16.63	\$16.63
2013	\$17.90	\$16.50	\$16.49	\$16.49	\$17.90	\$16.44	\$16.50	\$16.50	\$16.50
2014	\$18.31	\$16.88	\$16.88	\$16.88	\$18.31	\$16.82	\$16.88	\$16.88	\$16.88
2015	\$18.75	\$17.29	\$17.29	\$17.29	\$18.75	\$17.23	\$17.29	\$17.29	\$17.29
2016	\$22.39	\$21.99	\$21.98	\$21.98	\$22.39	\$21.93	\$21.99	\$21.99	\$21.99
2017	\$23.25	\$22.80	\$22.80	\$22.80	\$23.25	\$22.74	\$22.80	\$22.80	\$22.80
2018	\$24.03	\$23.56	\$23.56	\$23.56	\$24.03	\$23.50	\$23.56	\$23.56	\$23.56
2019	\$24.69	\$24.21	\$24.20	\$24.20	\$24.69	\$24.14	\$24.20	\$24.20	\$24.21
2020	\$25.34	\$24.67	\$24.66	\$24.66	\$25.34	\$24.61	\$24.67	\$24.67	\$24.67
2021	\$25.76	\$25.03	\$25.02	\$25.02	\$25.76	\$24.97	\$25.03	\$25.03	\$25.03
2022	\$26.17	\$25.42	\$25.41	\$25.41	\$26.17	\$25.36	\$25.41	\$25.41	\$25.42
2023	\$26.66	\$25.88	\$25.87	\$25.87	\$26.66	\$25.82	\$25.88	\$25.88	\$25.88
2024	\$27.23	\$26.44	\$26.43	\$26.43	\$27.23	\$26.37	\$26.43	\$26.43	\$26.44
2025	\$27.62	\$26.82	\$26.81	\$26.81	\$27.62	\$26.75	\$26.81	\$26.81	\$26.82
2026	\$27.80	\$26.99	\$26.98	\$26.98	\$27.80	\$26.93	\$26.99	\$26.99	\$26.99
2027	\$27.88	\$27.06	\$27.06	\$27.06	\$27.88	\$27.00	\$27.06	\$27.06	\$27.06
2028	\$27.95	\$27.14	\$27.13	\$27.13	\$27.95	\$27.08	\$27.14	\$27.14	\$27.14
2029	\$28.03	\$27.21	\$27.20	\$27.20	\$28.03	\$27.15	\$27.21	\$27.21	\$27.21
2030	\$28.11	\$27.29	\$27.28	\$27.28	\$28.11	\$27.23	\$27.29	\$27.29	\$27.29
2031	\$28.18	\$27.36	\$27.35	\$27.35	\$28.18	\$27.30	\$27.36	\$27.36	\$27.36
2032	\$28.26	\$27.44	\$27.43	\$27.43	\$28.26	\$27.38	\$27.44	\$27.44	\$27.44
2033	\$28.34	\$27.51	\$27.51	\$27.51	\$28.34	\$27.45	\$27.51	\$27.51	\$27.51
2034	\$28.42	\$27.59	\$27.58	\$27.58	\$28.42	\$27.53	\$27.59	\$27.59	\$27.59
2035	\$28.49	\$27.67	\$27.66	\$27.66	\$28.49	\$27.60	\$27.66	\$27.66	\$27.67
2036	\$28.57	\$27.74	\$27.73	\$27.73	\$28.57	\$27.68	\$27.74	\$27.74	\$27.74
2037	\$28.65	\$27.82	\$27.81	\$27.81	\$28.65	\$27.76	\$27.82	\$27.82	\$27.82
2038	\$28.73	\$27.89	\$27.89	\$27.89	\$28.73	\$27.83	\$27.89	\$27.89	\$27.89
2039	\$28.81	\$27.97	\$27.96	\$27.96	\$28.81	\$27.91	\$27.97	\$27.97	\$27.97
2040	\$28.89	\$28.05	\$28.04	\$28.04	\$28.89	\$27.99	\$28.05	\$28.05	\$28.05
2041	\$28.97	\$28.13	\$28.12	\$28.12	\$28.97	\$28.07	\$28.12	\$28.12	\$28.13
2042	\$29.05	\$28.20	\$28.20	\$28.20	\$29.05	\$28.14	\$28.20	\$28.20	\$28.20
2043	\$29.13	\$28.28	\$28.27	\$28.27	\$29.13	\$28.22	\$28.28	\$28.28	\$28.28
2044	\$29.21	\$28.36	\$28.35	\$28.35	\$29.21	\$28.30	\$28.36	\$28.36	\$28.36
2045	\$29.29	\$28.44	\$28.43	\$28.43	\$29.29	\$28.38	\$28.44	\$28.44	\$28.44
2046	\$29.37	\$28.52	\$28.51	\$28.51	\$29.37	\$28.46	\$28.51	\$28.51	\$28.52
2047	\$29.45	\$28.59	\$28.59	\$28.59	\$29.45	\$28.53	\$28.59	\$28.59	\$28.59

FPL'S LIGHT OIL PRICE FORECAST

YEAR	TURKEY POINT \$/MMBTU	WCEC \$/MMBTU	OLEANDER \$/MMBTU	PORT EVERGLADES \$/MMBTU	LAUDERDALE \$/MMBTU	FT MYERS \$/MMBTU	PUTNAM \$/MMBTU	MARTIN \$/MMBTU	CANAVERAL \$/MMBTU	RIVIERA \$/MMBTU
2011	\$23.33	\$23.08	\$23.07	\$22.46	\$22.46	\$22.97	\$23.17	\$23.08	\$23.17	\$23.08
2012	\$24.17	\$23.92	\$23.92	\$23.31	\$23.31	\$23.81	\$24.03	\$23.92	\$24.03	\$23.92
2013	\$24.40	\$24.15		\$23.54	\$23.54	\$24.04	\$24.26	\$24.14	\$24.26	\$24.15
2014	\$25.17	\$24.92		\$24.30	\$24.30	\$24.81	\$25.03	\$24.91	\$25.03	\$24.92
2015	\$25.76	\$25.51		\$24.89	\$24.89	\$25.40	\$25.62	\$25.50	\$25.62	\$25.51
2016	\$30.22	\$29.97		\$29.35	\$29.35	\$29.86	\$30.08	\$29.96	\$30.08	\$29.97
2017	\$31.23	\$30.98		\$30.36	\$30.36	\$30.87	\$31.08	\$30.97	\$31.08	\$30.98
2018	\$32.20	\$31.95		\$31.34	\$31.34	\$31.84	\$32.06	\$31.95	\$32.06	\$31.95
2019	\$33.12	\$32.87		\$32.26	\$32.26	\$32.76	\$32.98	\$32.87	\$32.98	\$32.87
2020	\$34.04	\$33.79		\$33.17	\$33.17	\$33.68	\$33.90	\$33.78	\$33.90	\$33.79
2021	\$35.24	\$34.99		\$34.37	\$34.37	\$34.88	\$35.09	\$34.98	\$35.09	\$34.99
2022	\$36.29	\$36.04		\$35.43	\$35.43	\$35.93	\$36.15	\$36.04	\$36.15	\$36.04
2023	\$37.35	\$37.10		\$36.48	\$36.48	\$36.99	\$37.21	\$37.09	\$37.21	\$37.10
2024	\$38.45	\$38.20		\$37.59	\$37.59	\$38.09	\$38.31	\$38.20	\$38.31	\$38.20
2025	\$39.48	\$39.23		\$38.61	\$38.61	\$39.12	\$39.34	\$39.22	\$39.34	\$39.23
2026	\$39.90	\$39.66		\$39.04	\$39.04	\$39.54	\$39.76	\$39.65	\$39.76	\$39.66
2027	\$40.20	\$39.95		\$39.33	\$39.33	\$39.84	\$40.06	\$39.94	\$40.06	\$39.95
2028	\$40.49	\$40.25		\$39.63	\$39.63	\$40.13	\$40.35	\$40.24	\$40.35	\$40.25
2029	\$40.79	\$40.54		\$39.93	\$39.93	\$40.43	\$40.65	\$40.54	\$40.65	\$40.54
2030	\$41.09	\$40.84		\$40.23	\$40.23	\$40.73	\$40.95	\$40.84	\$40.95	\$40.84
2031	\$41.40	\$41.15		\$40.53	\$40.53	\$41.04	\$41.25	\$41.14	\$41.25	\$41.15
2032	\$41.70	\$41.45		\$40.84	\$40.84	\$41.34	\$41.56	\$41.45	\$41.56	\$41.45
2033	\$42.01	\$41.76		\$41.14	\$41.14	\$41.65	\$41.87	\$41.75	\$41.87	\$41.76
2034	\$42.32	\$42.07		\$41.46	\$41.46	\$41.96	\$42.18	\$42.06	\$42.18	\$42.07
2035	\$42.63	\$42.38		\$41.77	\$41.77	\$42.27	\$42.49	\$42.38	\$42.49	\$42.38
2036	\$42.95	\$42.70		\$42.08	\$42.08	\$42.59	\$42.81	\$42.69	\$42.81	\$42.70
2037	\$43.26	\$43.02		\$42.40	\$42.40	\$42.90	\$43.12	\$43.01	\$43.12	\$43.02
2038	\$43.58	\$43.34		\$42.72	\$42.72	\$43.22	\$43.44	\$43.33	\$43.44	\$43.34
2039	\$43.91	\$43.66		\$43.04	\$43.04	\$43.55	\$43.76	\$43.65	\$43.76	\$43.66
2040	\$44.23	\$43.98		\$43.37	\$43.37	\$43.87	\$44.09	\$43.98	\$44.09	\$43.98
2041	\$44.56	\$44.31		\$43.69	\$43.69	\$44.20	\$44.42	\$44.30	\$44.42	\$44.31
2042	\$44.89	\$44.64		\$44.02	\$44.02	\$44.53	\$44.75	\$44.63	\$44.75	\$44.64
2043	\$45.22	\$44.97		\$44.36	\$44.36	\$44.86	\$45.08	\$44.97	\$45.08	\$44.97
2044	\$45.56	\$45.31		\$44.69	\$44.69	\$45.19	\$45.41	\$45.30	\$45.41	\$45.31
2045	\$45.89	\$45.64		\$45.03	\$45.03	\$45.53	\$45.75	\$45.64	\$45.75	\$45.64
2046	\$46.23	\$45.98		\$45.37	\$45.37	\$45.87	\$46.09	\$45.98	\$46.09	\$45.98
2047	\$46.58	\$46.33		\$45.71	\$45.71	\$46.21	\$46.43	\$46.32	\$46.43	\$46.33