

State of Florida



Public Service Commission

CAPITAL CIRCLE OFFICE CENTER • 2540 SHUMARD OAK BOULEVARD
TALLAHASSEE, FLORIDA 32399-0850

-M-E-M-O-R-A-N-D-U-M-

DATE: March 24, 2014
TO: Carlotta S. Stauffer, Commission Clerk, Office of Commission Clerk
FROM: Laura V. King, Economic Analyst, Division of Economics *LK*
RE: Docket No. 140054-EU: Joint petition for approval of second amendment to territorial agreement in Polk County between Tampa Electric Company and the City of Lakeland.

Please place the attached documents in the docket file for Docket No. 140054-EU.

RECEIVED-FPSC
14 MAR 24 AM 10:17
COMMISSION
CLERK

Laura King

From: Stiles II, Billy J. <wjstiles@tecoenergy.com>
Sent: Monday, March 24, 2014 9:11 AM
To: Laura King
Subject: Lakeland-TEC drawings
Attachments: Lakeland-TEC Second Amendment and Joint PSC petition-Drawings.pdf

Laura, here is a map that shows the details of the areas being transferred more clearly.

Please let me know if you have any questions.

Billy

Wilbur J. "Billy" Stiles, II
Manager Regulatory Affairs
Tampa Electric Company, Inc.
106 E. College Avenue
Suite 630
Tallahassee, Florida 32301
Office: 850-681-6785
Cell: 850-294-6589
Email: wjstiles@tecoenergy.com



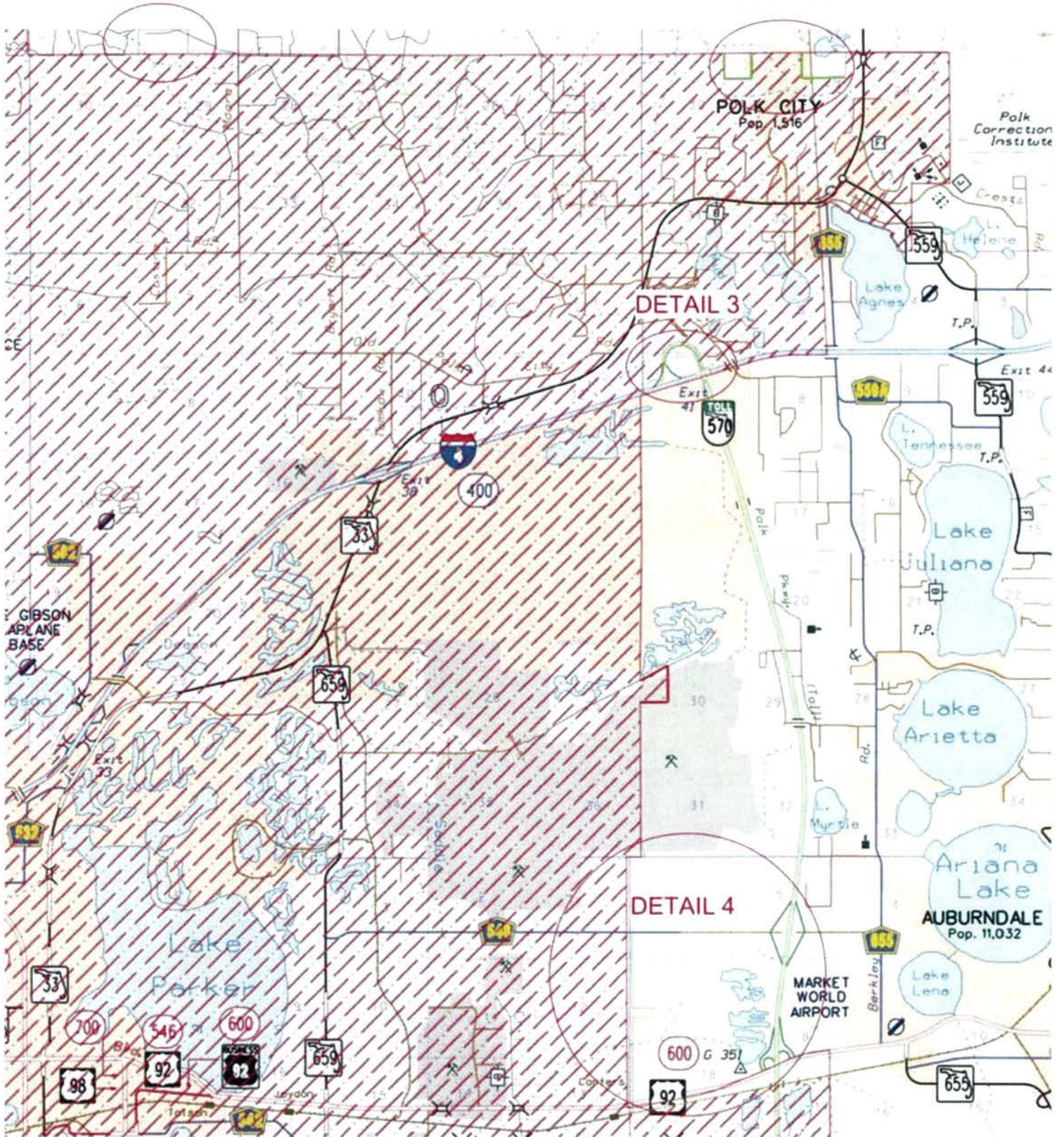
NOTICE: This email is intended only for the individual(s) to whom it is addressed and may contain confidential information. If you have received this email by mistake, please notify the sender immediately, delete this email from your system and do not copy or disclose it to anyone else. Although we take precautions to protect against viruses, we advise you to take your own precautions to protect against viruses as we accept no liability for any which remain.



Lakeland Service Territory

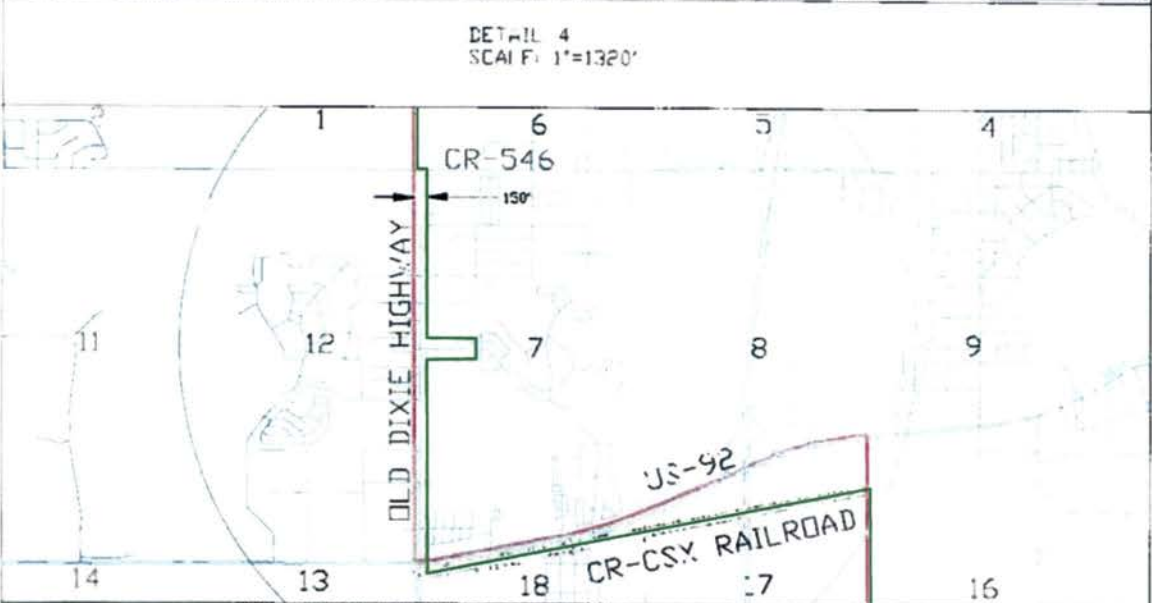
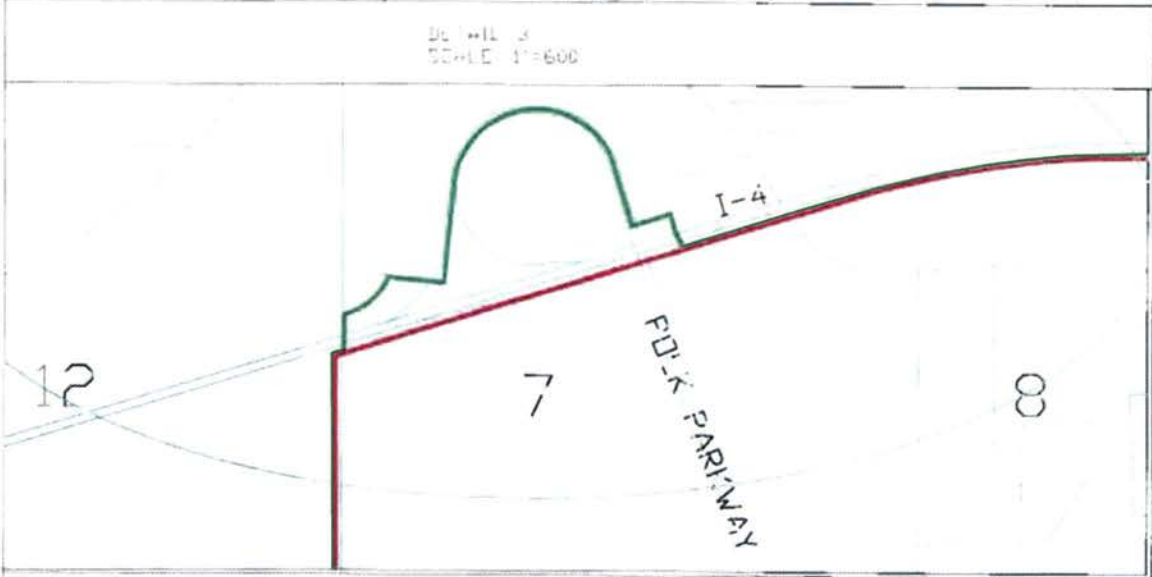
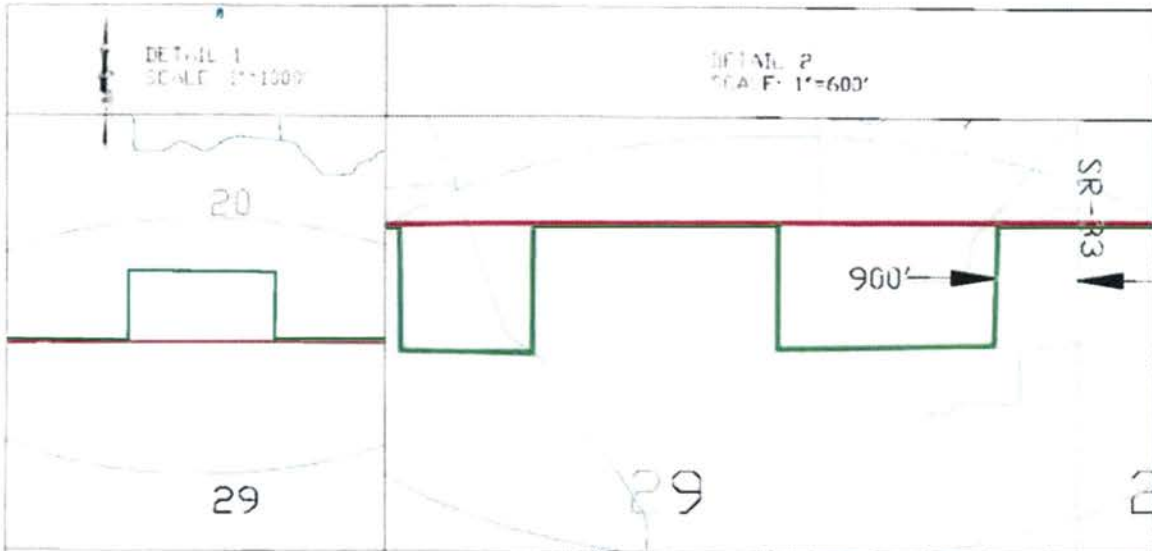
DETAIL 1

DETAIL 2



Cropped image of the cs_polk.dgn and the Lakeland Service Territory with proposed modifications.

— Proposed Boundary
 — Existing Boundary



TRANSMISSION ENGINEERING DEPARTMENT
 SCALE: PLAN ELE: N/A
 DRAWN: TEC
 ENGR: N/A
 DATE: 10/10/2013

Lakeland/TEC Boundary Changes
 DETAIL SHEET

N/A
 2 OF 2