



Writer's Direct Dial Number: (850) 521-1706
Writer's E-Mail Address: bkeating@gunster.com

May 22, 2014

Ms. Carlotta Stauffer, Clerk
Florida Public Service Commission
2540 Shumard Oak Boulevard
Tallahassee, FL 32399-0850

RECEIVED-FPSC
14 MAY 22 PM 4:08
COMMISSION
CLERK

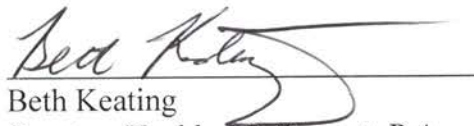
**Re: Docket No. 140001-EI: Fuel and Purchased Power Cost Recovery Clause with
Generating Performance Incentive Factor**

Dear Ms. Stauffer:

Attached for filing, please find the original and seven copies of Florida Public Utilities Company's Request for Confidential Classification for portions of staff auditor workpapers associated with Audit Control Number 14-027-4-2. Included with this filing are one highlighted and two redacted copies of the subject information, as required by Rule 25-22.006, F.A.C.

Thank you for your assistance with this filing. As always, please don't hesitate to let me know if you have any questions whatsoever.

Sincerely,


Beth Keating
Gunster, Yoakley & Stewart, P.A.
215 South Monroe St., Suite 601
Tallahassee, FL 32301
(850) 521-1706

MEK

COM _____
AFD 2+ *Redacted Subject Info.*
APA |
ECO |
ENG |
GCL |
IDM |
TEL |
CLK |

BEFORE THE FLORIDA PUBLIC SERVICE COMMISSION

In re: Fuel and purchased power cost recovery clause with generating performance incentive factor. | DOCKET NO. 140001-EI
| DATED: May 22, 2014

REQUEST FOR CONFIDENTIAL CLASSIFICATION

Florida Public Utilities Company (“FPU” or “Company”), by and through its undersigned counsel, pursuant to Section 366.093, Florida Statutes, and consistent with Rule 25-22.006, Florida Administrative Code, hereby submits its Request for Confidential Classification to protect certain information contained in the Commission Staff auditor workpapers associated with Audit Control No. 14-027-4-2. Specifically, FPU seeks confidential treatment of information contained in certain portions of workpapers numbered 41-2/4, 41-2/5, 41-2/5-1, 43-1/1-1, 43-1/1-2, 43-1/1-2-1, 43-1/1-3, 43-1/1-4, 43-1/1-5, 43-1/3-1, 43-1/3-2, 43-1/3-3, 43-1/3-4, 43-1/3-5, 43-1/3-6, 43-1/3-7, 44-2/1, and 44-4. In support of this Request, FPU states that:

1. The information contained in the referenced workpapers includes details from bills, including specific dollar amounts, quantities, requirements, and account numbers, which, if disclosed, could enable a third party to discern confidential terms in contracts between FPU and its vendors/suppliers.
2. Information included in these workpapers also includes account information, including quantities and requirements for the FPU electric system at various points in the year, and the billing/payment information associated with those requirements.
3. Information also includes specific information contained in existing contracts, which both FPU and its vendor/suppliers treat as highly confidential. With regard to information contained in Workpaper 44-2, certain information contained therein has

already been afforded confidential classification by the Commission by Order No. PSC-12-0180-CFO-EQ, issued April 5, 2012, in Docket No. 120058-EQ.

4. In addition, certain workpapers include correspondence between FPU and its vendor/suppliers addressing changes to contractual terms or billed amounts, which FPU and its vendor/suppliers likewise treat as confidential.
5. Other information included in the workpapers includes specific bills to FPU customers, including specific amounts, volumes, and customer account information. FPU treats the account information of its customers as highly confidential, the disclosure of which could harm FPU's customers, as well as FPU's ability to continue to serve such customers.
6. The information at issue is, as noted, considered proprietary confidential business information by the parties and has not otherwise been disclosed publicly. Disclosure of this information could not only impair FPU's ability to effectively negotiate for good and services with other vendors, it could also impair FPU's ability to negotiate with its existing vendor/suppliers due to contractual obligations to maintain confidentiality. Ultimately, the Company's customers will be harmed if there is any impairment to FPU's ability to negotiate advantageous terms and pricing for goods and services.
6. The information for which FPU seeks confidential classification is information that the Company treats as confidential, and that meets the definition of "proprietary confidential business information" as set forth in Section 366.093(3), Florida Statutes, which provides:

(3) Proprietary confidential business information means information, regardless of form or characteristics, which is owned or controlled by the

person or company, is intended to be and is treated by the person or company as private in that the disclosure of the information would cause harm to the ratepayers or the person's or company's business operations, and has not been disclosed unless disclosed pursuant to a statutory provision, an order of a court or administrative body, or private agreement that provides that the information will not be released to the public. Proprietary confidential business information includes, but is not limited to:

- (a) Trade secrets.
- (b) Internal auditing controls and reports of internal auditors.
- (c) Security measures, systems, or procedures.
- (d) Information concerning bids or other contractual data, the disclosure of which would impair the efforts of the public utility or its affiliates to contract for goods or services on favorable terms.
- (e) Information relating to competitive interests, the disclosure of which would impair the competitive business of the provider of the information.
- (f) Employee personnel information unrelated to compensation, duties, qualifications, or responsibilities.

7. Specifically, FPUC seeks confidential classification for the highlighted information in the following (lines/pages) in the referenced workpapers:

Document/Workpaper	Page/Line/Location	Description	Rationale
41-2/4	Pages 1 and 2/All Highlighted Information on Bill, including auditor notes	Customer Specific Account/Billing Information	Disclosure of the information would harm FPU and its customers, because it would reveal specific customer's account information, including billed amounts, rates, and volumes
41-2/5	Pages 1 and 2/All Highlighted Information on Bill, including auditor notes	Customer Specific Account/Billing Information	Disclosure of the information would harm FPU and its customers, because it would reveal specific customer's account information, including billed

Document/Workpaper	Page/Line/Location	Description	Rationale
			amounts, rates, and volumes
41-2/5-1	Page 3/All Highlighted Information on Bill, including auditor notes	Customer Specific Account/Billing Information	Disclosure of the information would harm FPU and its customers, because it would reveal specific customer's account information, including billed amounts, rates, and volumes
43-1/1-1	Pages 1 and 2/Highlighted information in the last four lines of paragraph 2 and the first two lines of paragraph 3 of page 1, as well as redacted information in the Columns "Revenues Collected," "True-Up Revenues," "True-Up," "Interest," and "Total True Up", as well as "FPUC Totals."	FPU specific billing information in correspondence with vendor	Disclosure of this information would reveal information regarding amounts charged to FPU based upon usage the disclosure of which could harm FPU's ability to negotiate with an existing contract vendor
43-1/1-2	Highlighted information on Bill to FPU	FPU Specific Account/Billing Information	Disclosure of this information would reveal information regarding amounts charged to FPU based upon usage the disclosure of which could harm FPU's ability to negotiate with an existing contract vendor
43-1/1-2/1	Information in Capacity Rate column for the Years 2012 - 2017	Contractual Terms with FPU's purchased power supplier	Disclosure of this information would reveal information regarding amounts charged to FPU pursuant to contract terms,

Document/Workpaper	Page/Line/Location	Description	Rationale
			disclosure of which could harm FPU's ability to negotiate with an existing contract vendor
43-1/1-3	Highlighted information on Bill to FPU	FPU Specific Account/Billing Information	Disclosure of this information would reveal information regarding amounts charged to FPU based upon usage the disclosure of which could harm FPU's ability to negotiate with an existing contract vendor
43-1/1-4	Highlighted information on Bill to FPU	FPU Specific Account/Billing Information	Disclosure of this information would reveal information regarding amounts charged to FPU based upon usage the disclosure of which could harm FPU's ability to negotiate with an existing contract vendor
43-1/1-5	Highlighted information on Bill to FPU	FPU Specific Account/Billing Information	Disclosure of this information would reveal information regarding amounts charged to FPU based upon usage the disclosure of which could harm FPU's ability to negotiate with an existing contract vendor
43-1/3-1 (pages 1 and 2)	Highlighted information on Bill to FPU	FPU Specific Account/Billing Information	Disclosure of this information would reveal information regarding amounts charged to FPU based upon usage

Document/Workpaper	Page/Line/Location	Description	Rationale
			the disclosure of which could harm FPU's ability to negotiate with an existing contract vendor
43-1/3-1	<p>Pages 3 – 6/ -</p> <p>p. 3 - Highlighted amounts in all lines for the Columns "Amount," "Cost/Unit" and "Total", as well as highlighted amount in last line for "fuel credit"</p> <p>p. 4 – Highlighted amounts for "Rate" and "Amount" Columns, as well as notations reflecting rate changes to the immediate right of such columns</p> <p>pgs. 5 and 6 – Highlighted account specific information, as well as all highlighted numbers in the Columns "Channel 1", "Channel 2", "Channel 3" and "Channel 4"</p>	Billing Calculation	Information regarding calculation of FPU's bill from its purchased power supplier, the disclosure of which could enable a third party to discern contract terms, which in turn could impair FPU's ability to contract for goods and services with that vendor, as well as other similarly situated vendor/suppliers
43-1/3-2	Highlighted information on Bill to FPU	FPU Specific Account/Billing Information	Disclosure of this information would reveal information regarding amounts charged to FPU based upon usage the disclosure of which could harm FPU's ability to negotiate with an existing contract vendor
43-1/3-3	Highlighted information on Bill to	FPU Specific Account/Billing	Disclosure of this information would

Document/Workpaper	Page/Line/Location	Description	Rationale
	FPU	Information	reveal information regarding amounts charged to FPU based upon usage the disclosure of which could harm FPU's ability to negotiate with an existing contract vendor
43-1/3-4	Highlighted amounts in all lines for the Columns "Amount," "Cost/Unit" and "Total", as well as highlighted amount in last line for "fuel credit", "Demand" and "energy charge"	Billing Calculation	Information regarding calculation of FPU's bill from its purchased power supplier, the disclosure of which could enable a third party to discern contract terms, which in turn could impair FPU's ability to contract for goods and services with that vendor, as well as other similarly situated vendor/suppliers
43-1/3-5	Highlighted information on Bill to FPU	FPU Specific Account/Billing Information	Disclosure of this information would reveal information regarding amounts charged to FPU based upon usage the disclosure of which could harm FPU's ability to negotiate with an existing contract vendor
43-1/3-6	Highlighted information on Bill to FPU	FPU Specific Account/Billing Information	Disclosure of this information would reveal information regarding amounts charged to FPU based upon usage

Document/Workpaper	Page/Line/Location	Description	Rationale
			the disclosure of which could harm FPU's ability to negotiate with an existing contract vendor
43-1/3-7	Highlighted information on pages 1 (last two paragraphs) and 2 (first line, first paragraph)	Information in correspondence with vendor/supplier regarding billing and credits to FPU	Disclosure of this information would reveal information regarding amounts charged to FPU based upon usage the disclosure of which could harm FPU's ability to negotiate with an existing contract vendor
43-1/3-7 (Pages 3 and 4)	Highlighted information on Bill to FPU	FPU Specific Account/Billing Information	Disclosure of this information would reveal information regarding amounts charged to FPU based upon usage the disclosure of which could harm FPU's ability to negotiate with an existing contract vendor
44-2/1 (Pages 3 – 8)	Page 3, highlighted information regarding calculations of "Energy Price", "Capacity Price" (Non-Peak and Peak); page 4, all lines/all columns of chart titled "Week Day Purchase Prices (\$/MWh), all highlighted amounts for columns "Winter", "Summer" and "November" for "Weekend Day Purchase Prices" chart, as well as auditor notes on same	Power Purchase calculations and examples from contract with Rayonier	Disclosure of this information would reveal contractual information that is treated as confidential by the parties to the contract, the disclosure of which would harm FPU's ability to contract for goods and services with other vendors and would be contrary to existing contract terms

Document/Workpaper	Page/Line/Location	Description	Rationale
	<p>page; page 5, all highlighted amounts in section "Context", as well as amounts in chart for columns "Peak Hours", "Seasonal Prob", "Energy Price (\$/MWH), "Price Forward", "Demand Charges", "Nominal", and "Effective." Also, the highlighted information in the calculations for "Prices for Power Purchase," "For Week Day Non-Peak and Weekend", "For Week Day Peak Hours"; page 6, calculations for C.Charge and Capacity Price, all lines, all columns for Chart "Week Day Purchase Price (\$/MWh), and amounts in Chart "Weekend Day Purchase Prices (\$/MWh); amounts in chart on page 7 for "Winter Late Probability", "November Early Probability", amounts/information in "Various" and "Price Forward" columns, amounts under "Demand Charges" and "Nominal" and "Effective" columns, and calculations for "Prices for Power Purchase" and "For Week Day Non-Peak and Weekend"; and on</p>		

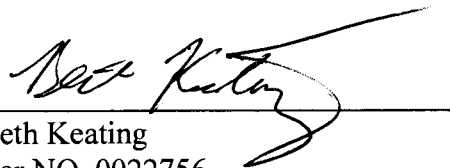
Document/Workpaper	Page/Line/Location	Description	Rationale
	page 8, all highlighted calculations, as well as all lines all columns for chart "Week Day Purchase Prices (\$/MWh)		
44-4	Page 1 and 2, all highlighted amounts in Columns under "Rates and Charges", as well as "Estimated \$/MWh", in charts for both "Current Rate Information" and "Proposed Rate Information"	Information in correspondence with vendor/supplier regarding billing and credits to FPU	Disclosure of this information would reveal information regarding amounts charged to FPU based upon usage the disclosure of which could harm FPU's ability to negotiate with an existing contract vendor
44-4	Page 4, highlighted information in lines 1 and 2 of first paragraph	Information in correspondence with vendor/supplier regarding billing and credits to FPU	Disclosure of this information would reveal information regarding amounts charged to FPU based upon usage the disclosure of which could harm FPU's ability to negotiate with an existing contract vendor

8. The information at issue falls squarely under Section 366.093(3)(d) and (e), Florida Statutes. Release of the referenced information as a public record would harm FPU's business operations and ratepayers by impairing the Company's ability to effectively negotiate for goods and services. As such, FPU requests that the Commission deem afford this information confidential treatment and exempt from Section 119.07, Florida Statutes. Included with this Request is a highlighted copy of the referenced documents. Also enclosed are two redacted copies of the information.

9. FPU asks that confidential classification be granted for a period of at least 18 months. Should the Commission find that it needs to retain the information, FPU respectfully requests that the confidential information be returned to the Company.

WHEREFORE, FPU respectfully requests that the highlighted information contained in the identified audit workpapers associated with Audit Control Number 14-027-4-2 be classified as “proprietary confidential business information,” and thus, exempt from Section 119.07, Florida Statutes.

RESPECTFULLY SUBMITTED this 22nd day of May, 2014.



Beth Keating
Bar NO. 0022756
Gunster, Yoakley & Stewart, P.A.
215 South Monroe St., Suite 618
Tallahassee, FL 32301
(850) 521-1706

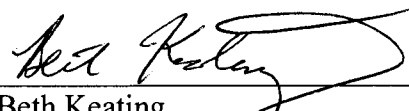
CERTIFICATE OF SERVICE

I HEREBY CERTIFY that a true and correct copy of the foregoing has been furnished by Electronic Mail (redacted only) to the following parties of record this 22nd day of May, 2014:

<p>Martha Barrera Florida Public Service Commission 2540 Shumard Oak Boulevard Tallahassee, FL 32399-0850 Mbarrera@PSC.STATE.FL.US</p>	<p>James D. Beasley/J. Jeffry Wahlen/Ashley Daniels Ausley Law Firm Post Office Box 391 Tallahassee, FL 32302 jbeasley@ausley.com jwahlen@ausley.com adaniels@ausley.com</p>
<p>Jeffrey Stone/Russell Badders/Steven Griffin Beggs & Lane P.O. Box 12950 Pensacola, FL 32591-2950 jas@beggslane.com</p>	<p>James W. Brew/F. Alvin Taylor Brickfield Law Firm Eighth Floor, West Tower 1025 Thomas Jefferson Street, NW Washington, DC 20007 jbrew@bbrslaw.com</p>
<p>John T. Butler Florida Power & Light Company 700 Universe Boulevard Juno Beach, FL 33408-0420 John.Butler@fpl.com</p>	<p>Kenneth Hoffman Florida Power & Light Company 215 South Monroe Street, Suite 810 Tallahassee, FL 32301 Ken.Hoffman@fpl.com</p>
<p>Captain Samuel Miller USAF/AFLOA/JACL/ULFSC Federal Executive Agencies 139 Barnes Drive, Suite 1 Tyndall AFB, FL 32403-5319 Samuel.Miller@Tyndall.af.mil</p>	<p>Florida Industrial Users Power Group Jon C. Moyle, Jr. Moyle Law Firm 118 North Gadsden Street Tallahassee, FL 32301 jmoyle@moylelaw.com</p>
<p>Cheryl Martin Florida Public Utilities Company 1641 Worthington Road, Suite 220 West Palm Beach, FL 33409 Cheryl_Martin@fpuc.com</p>	<p>Florida Retail Federation Robert Scheffel Wright/John T. LaVia Gardner Law Firm 1300 Thomaswood Drive Tallahassee, FL 32308 schef@gbwlegal.com</p>

<p>Robert L. McGee, Jr. Gulf Power Company One Energy Place Pensacola, FL 32520 rlmcgee@southernco.com</p>	<p>J.R. Kelly/P. Christensen/C. Rehwinkel/ Office of Public Counsel c/o The Florida Legislature 111 W. Madison Street, Room 812 Tallahassee, FL 32399-1400 Christensen.patty@leg.state.fl.us</p>
<p>Matthew Bernier/Paul Lewis, Jr. Duke Energy 106 East College Avenue, Suite 800 Tallahassee, FL 32301 Paul.lewisjr@duke-energy.com Matthew.Bernier@duke-energy.com</p>	<p>John T. Burnett/Dianne M. Triplett Duke Energy 299 First Avenue North St. Petersburg, FL 33701 John.burnett@duke-energy.com Dianne.Triplett@duke-energy.com</p>
<p>Ms. Paula K. Brown Tampa Electric Company Regulatory Affairs P.O. Box 111 Tampa, FL 33601-0111 Regdept@tecoenergy.com</p>	<p>Randy B. Miller White Springs Agricultural Chemicals, Inc. Post Office Box 300 White Springs, FL 32096 Rmiller@pcsphosphate.com</p>

By: _____


Beth Keating
Gunster, Yoakley & Stewart, P.A.
215 South Monroe St., Suite 601
Tallahassee, FL 32301
(850) 521-1706

Florida Public Utilities Co.
Fuel Cost Recovery Clause
Dkt.# 140001-EI, ACN 14-027-4-2
TYE 2013

FLORIDA PUBLIC UTILITIES COMPANY
P. O. Box 418
Fernandina Beach, Florida 32034

REDACTED

CONFIDENTIAL

3/27/14
4/14/14

Title: Rayonier

RAYONIER
P.O. BOX 2002
Fernandina Beach, FL 32304

Date: 6/28/13
Due Date: 7/18/13
Account No.: [REDACTED]

Previous Reading	Current Reading	Consumption	Rate	Amount
------------------	-----------------	-------------	------	--------

5/31/13 6/28/13

Maximum Demand
Standby Contract Dem.
Average CP Demands (16):
Transm. Contract Dem.
JEA Concident Peak Demand
Excess Reactive Demand:

Base Rate:

Customer Facilities Charge:
Local Facilities Charge:

Total Base Rate Charges:

Purchased Electricity Charges (JEA):

Average CP Demand Charge:
Transmission Contract Demand Charge
Energy Charge:

Total Purchased Electricity Charges:

Energy Conservation Charge:

Energy Conservation Charge:

Total Energy Conservation Charges:

Total Standby Rate Charges:

Franchise Fee:

City Tax:

Gross Receipts Tax:

Total Current Month Charges:

Late Charge \$5 Minimum or 1.5% ***:

TOTAL AMOUNT DUE:

** A Late Payment Fee will apply if amount due is greater
[REDACTED] not paid by due date

Source: Reg #1

- COM _____
- AFD 1 copy
- APA _____
- ECO _____
- ENG _____
- GCL _____
- IDM _____
- TEL _____
- CLK 4/2

4 p/

FLORIDA PUBLIC UTILITIES COMPANY
P. O. Box 418
Fernandina Beach, Florida 32034

CONFIDENTIAL

41-4

RAYONIER
P.O. BOX 2002
Fernandina Beach, FL 32304

Date: 11/27/13
Due Date: 12/17/13
Account No.: [REDACTED]

Previous Reading	Current Reading	Consumption	Rate	Amount
10/31/13	11/27/13	[REDACTED]		
		Maximum Demand	on	[REDACTED]
		Standby Contract Dem.		[REDACTED]
		Average CP Demands (16):		[REDACTED]
		Transm. Contract Dem.		[REDACTED]
		JEA Concurrent Peak Demand	on	[REDACTED]
		Excess Reactive Demand:		[REDACTED]
Base Rate:				
		Customer Facilities Charge:		[REDACTED]
		Local Facilities Charge	@	[REDACTED]
Total Base Rate Charges:				
Purchased Electricity Charges (JEA):				
		Average CP Demand Charge:	@	[REDACTED]
		Transmission Contract Demand Charge	@	[REDACTED]
		Energy Charge:	@	[REDACTED]
Total Purchased Electricity Charges:				
Energy Conservation Charge:				
		Energy Conservation Charge:	@	[REDACTED]
Total Energy Conservation Charges:				
Total Standby Rate Charges:				
Franchise Fee:				
		City Tax:	@	[REDACTED]
		Gross Receipts Tax:	@	[REDACTED]
Total Current Month Charges:				
Late Charge \$5 Minimum or 1.5% **:				
TOTAL AMOUNT DUE:				

41-2 p4

** A Late Payment Fee will apply if amount due is greater than [REDACTED] and is not paid by due date

41-2
4 82

Florida Public Utilities Co.
Fuel Cost Recovery Clause
Dkt.# 140001-EI, ACN 14-027-4-2
TYE 2013

FLORIDA PUBLIC UTILITIES COMPANY
P. O. Box 418
Fernandina Beach, Florida 32034

CONFIDENTIAL

Title FPUC Bill to Rock-Tenn

Rock-Tenn Company
Mill Division
North 8th Street
Fernandina Beach, FL 32034

Date: 6/28/13
Due Date: 7/18/13
Account No.: [REDACTED]

BM
3/27/14
4/1/14

Previous Reading	Current Reading	Consumption	Rate	Amount
------------------	-----------------	-------------	------	--------

5/31/13 6/28/13

Maximum Demand: [REDACTED]
Coincident Peak Demand: [REDACTED]
Contract Demand [REDACTED]
JEA Coincident Peak Demand: [REDACTED]
Excess Reactive Demand: [REDACTED]

Base Rate:

Customer Charge: [REDACTED]
Transmission Demand Charge: [REDACTED]
Excess Reactive Demand Charge: [REDACTED]

Total Base Rate Charges: [REDACTED]

Purchased Electricity Charges:

CP Generation Demand Charge: [REDACTED]
Transmission Contract Demand Charge [REDACTED]
Energy Charge: [REDACTED]

Total Purchased Electricity Charges: [REDACTED]

Energy Conservation Charge:

Energy Conservation Charge: [REDACTED]

Total Energy Conservation Charges: [REDACTED]

Total GSLD1 Rate Charges: [REDACTED]

Franchise Fee: [REDACTED]

City Tax: [REDACTED]

Gross Receipts Tax: [REDACTED]

Total Current Month Charges: [REDACTED]

Late Charge: [REDACTED]

Correction for July 2012 Billing [REDACTED]

TOTAL AMOUNT DUE: [REDACTED]

* Minimum Transmission Demand is 5000 KW
** A Late Payment Fee will apply if amount due is greater
[REDACTED] by due date

✓ = Agreed to Ordered Rate

Source: Reg #1

412
5 pl

CONFIDENTIAL

FLORIDA PUBLIC UTILITIES COMPANY
P. O. Box 418
Fernandina Beach, Florida 32034

Rock-Tenn Company
M&E Division
North 8th Street
Fernandina Beach, FL 32034

Date: 11/27/13
Due Date: 12/17/13
Account No.: [REDACTED]

4149

Previous Reading	Current Reading	Consumption	Rate	Amount
10/31/13	11/27/13	[REDACTED]	[REDACTED]	[REDACTED]

Maximum Demand: [REDACTED]
 Coincident Peak Demand: [REDACTED]
 Contract Demand: [REDACTED]
 JEA Coincident Peak Demand: [REDACTED]
 Excess Reactive Demand: [REDACTED]

Base Rate:
 Customer Charge: [REDACTED]
 Transmission Demand Charge: [REDACTED]
 Excess Reactive Demand Charge: [REDACTED]

Total Base Rate Charges: [REDACTED]

Purchased Electricity Charges:
 CP Generation Demand Charge: [REDACTED]
 Transmission Contract Demand Charge: [REDACTED]
 Energy Charge: [REDACTED]

Total Purchased Electricity Charges: [REDACTED]

Energy Conservation Charge:
 Energy Conservation Charge: [REDACTED]

Total Energy Conservation Charges: [REDACTED]

Total GSLD1 Rate Charges: [REDACTED]

Franchise Fee: [REDACTED]
 City Tax: [REDACTED]
 Gross Receipts Tax: [REDACTED]

Total Current Month Charges: [REDACTED]

Late [REDACTED]: [REDACTED]

TOTAL AMOUNT DUE: [REDACTED]

** A Late Payment Fee will apply if amount due is greater than [REDACTED] due date

412
5 p2

FLORIDA PUBLIC UTILITIES COMPANY
P. O. Box 418
Fernandina Beach, Florida 32034

CONFIDENTIAL

Rock-Tenn Company
Mill Division
North 8th Street
Fernandina Beach, FL 32034

Date: 6/28/13
Due Date: 7/18/13
Account No.: [REDACTED]

4/14

Previous Reading	Current Reading	Consumption	Rate	Amount
------------------	-----------------	-------------	------	--------

5/31/13 6/28/13

[REDACTED]

Maximum Demand: [REDACTED]
Coincident Peak Demand: [REDACTED]
Contract Demand [REDACTED]
JEA Coincident Peak Demand: [REDACTED]
Excess Reactive Demand: [REDACTED]

[REDACTED]

Base Rate:

Customer Charge: [REDACTED]
Transmission Demand Charge: [REDACTED] @ [REDACTED]
Excess Reactive Demand Charge: [REDACTED]

Total Base Rate Charges: [REDACTED]

Purchased Electricity Charges:

CP Generation Demand Charge: [REDACTED]
Transmission Contract Demand Charge [REDACTED]
Energy Charge: [REDACTED]

Total Purchased Electricity Charges: [REDACTED]

Energy Conservation Charge:

Energy Conservation Charge: [REDACTED] @ [REDACTED]

Total Energy Conservation Charges: [REDACTED]

Total GSLD1 Rate Charges: [REDACTED]

Franchise Fee:
City Tax:
Gross Receipts Tax:

[REDACTED]

Recal of Bill on WP 41-2/5pl.

Total Current Month Charges: [REDACTED]

Late Charge: [REDACTED]

Correction for July 2012 Billing

TOTAL AMOUNT DUE: [REDACTED]

* [REDACTED]
** A Late Payment Fee will apply if amount due is greater [REDACTED] by due date

SOURCE



41-2
5-1P3

PPX

Merry Lou Brasfield
Supervisor,
Transmission Billing
Financial & Contract
Services

Southern Company Services, Inc.
800 North 18th Street/2S-8810
Post Office Box 2641
Birmingham, Alabama 35291-8810
Tel 205.257.5724
Fax 205.257.6204
mlbrasfi@southern.com



4/14/14

BM
3/25/14

June 21, 2013

Florida Public Utilities Co.
Fuel Cost Recovery Clause
Dkt.# 140001-EI, ACN 14-027-4-2
TYE 2013

Title OATT Refund

Mr. Buddy Shelley
Florida Public Utilities Company
401 South Dixie Highway
P O Box 3395
West Palm Beach, FL 33402

CONFIDENTIAL

Phone: 561-833-0151

Fax: 561-833-0151

Email: dshelley@fpuc.com, bcampbell@fpuc.com, kabaker@chpk.com, cyoung@fpuc.com

2012 True-Up under Southern Companies' Open Access Transmission Tariff

Dear Mr. Shelley:

The purpose of this letter is to inform you that on this date, Southern Company Services, Inc., acting as agent for Alabama Power Company, Georgia Power Company, Gulf Power Company, and Mississippi Power Company (collectively referred to as "Southern Companies"), made a refund by wire deposit to Florida Public Utilities Company, in accordance with Southern Companies' Open Access Transmission Tariff (FERC Electric Tariff, Fourth Revised Volume No. 5) ("OATT" or "Tariff").

Under the Tariff, charges for bulk transmission facilities and sub-transmission facilities are initially assessed on the basis of projected cost data for the applicable rate year, and then true-up on the basis of actual cost data in the year following the rate year (once the actual cost data becomes available). The Tariff also provides that on or before July 1 of each year, Southern Companies are to either pay a refund (if the true-up charges are lower than the initial charges) or assess a surcharge (if the true-up charges are higher than the initial charges) to customers that took Long-Term Firm Point-to-Point Transmission Service, Conditional Long-Term Firm Transmission Service and Network Integration Transmission Service during the rate year.

The enclosed report shows [redacted] the actual amounts for [redacted] the amount of applicable interest, and the total amount refunded.

If you have any questions, please give me a call at 205-257-5724 or Yvette James Maddox at 205-257-3914.

Sincerely,

Merry Lou Brasfield

Merry Lou Brasfield

Enclosure

Source: Key # 2

43-1
1-1 P1

SOURCE



CONFIDENTIAL

4/14/10

FPUC
Network Integration Transmission Service
True-Up Period January 01, 2012 - January 01, 2013

Southern Company OATT
True-Up Report

Service Month	Date Paid	Revenues Collected*	True-Up Revenues	True-Up	Interest	Total True-Up
January, 2012	02/08/2012	[REDACTED]	[REDACTED]	[REDACTED]	[REDACTED]	[REDACTED]
February, 2012	03/08/2012	[REDACTED]	[REDACTED]	[REDACTED]	[REDACTED]	[REDACTED]
March, 2012	04/16/2012	[REDACTED]	[REDACTED]	[REDACTED]	[REDACTED]	[REDACTED]
April, 2012	05/04/2012	[REDACTED]	[REDACTED]	[REDACTED]	[REDACTED]	[REDACTED]
May, 2012	06/12/2012	[REDACTED]	[REDACTED]	[REDACTED]	[REDACTED]	[REDACTED]
June, 2012	07/11/2012	[REDACTED]	[REDACTED]	[REDACTED]	[REDACTED]	[REDACTED]
July, 2012	08/10/2012	[REDACTED]	[REDACTED]	[REDACTED]	[REDACTED]	[REDACTED]
August, 2012	09/07/2012	[REDACTED]	[REDACTED]	[REDACTED]	[REDACTED]	[REDACTED]
September, 2012	10/10/2012	[REDACTED]	[REDACTED]	[REDACTED]	[REDACTED]	[REDACTED]
October, 2012	11/13/2012	[REDACTED]	[REDACTED]	[REDACTED]	[REDACTED]	[REDACTED]
November, 2012	12/11/2012	[REDACTED]	[REDACTED]	[REDACTED]	[REDACTED]	[REDACTED]
December, 2012	01/09/2013	[REDACTED]	[REDACTED]	[REDACTED]	[REDACTED]	[REDACTED]

FPUC Totals

[REDACTED]

43-1 ✓

Southern Company OATT True-Up Report

SOURCE PBC

43-1
1-1 PR



One Energy Place
Pensacola, FL 32520-0037

Please return this portion with payment.

CURRENT AMOUNT
DELINQUENT AFTER
07/15/13

Florida Public Utilities Co.
Fuel Cost Recovery Clause
Dkt.# 140001-EI, ACN 14-027-4-2
TYE 2013

PBC

Title Gulf Power Bill (Power)

BM
3/27/14

FL PUBLIC UTILITIES
P O BOX 610
MARIANNA FL 32447

Remit To: [Redacted] Electric Service
One Energy Place
Pensacola, FL
32520-0714

ACCOUNT NUMBER [Redacted]

TOTAL DUE [Redacted]

ACCOUNT ACCESS CODE [Redacted]
ACCOUNT NUMBER [Redacted]
CUSTOMER NAME FL PUBLIC UTILITIES
SERVICE ADDRESS 0 MARIANNA FL

GULF POWER COMPANY
1195 Jackson Ave
Chipley, FL 32428
For Customer Service, Please Call:
(850) 444-6755

CONFIDENTIAL

RATE	PERIOD	METER	READING	METER	READING	METER	READING	USAGE
NAME	FROM	TO	NUMBER	TYPE	PREVIOUS	PRESENT	CONSTANT	
MKT	06/01/13	06/30/13	[Redacted]					[Redacted]
BASED								

REVENUE MONTH June-13

EXPLANATION OF CHARGES

MKT BASED-FL PUBLIC UTILITIES 43-1/2/1 06/01-06/30

DETAILS

Tot kWh [Redacted] 4 p1

Capacity Charge [Redacted]
Energy Charge [Redacted]
Total Electric Svc Costs [Redacted]

43-1/1 p2

HISTORICAL DATA

Days	KWH	KWH/DAY
This Mth	30	[Redacted]
Last Mth	31	[Redacted]
1 Yr Ago	30	[Redacted]

CURRENT AMOUNT
DELINQUENT AFTER
7/18/2013

TOTAL DUE [Redacted]

43-1/1 p2
Source: Req # 2



SOURCE

43-1
1-2

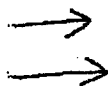
Florida Public Utilities Co.
Fuel Cost Recovery Clause
Dkt.# 140001-EI, ACN 14-027-4-2
TYE 2013

CONFIDENTIAL

Title Gulf Capacity Rate (Contract Excerpt)

4/14/14

CONFIDENTIAL



Year	Capacity Rate (\$/kW Mo.)
2008	\$7.80
2009	\$8.35
2010	\$8.45
2011	\$8.70
2012	[REDACTED]
2013	[REDACTED] (43-1/1-9) [REDACTED] (43-1/1-2)
2014	[REDACTED]
2015	[REDACTED]
2016	[REDACTED]
2017	[REDACTED]

"Monthly Energy Payment" shall have the meaning set forth in Section 4.2.

"Moody's" shall mean Moody's Investors Service or its successor, provided that, if Moody's ceases to exist or publish ratings, Moody's shall mean a nationally recognized rating agency mutually agreed upon by the Parties, which agreement will not be unreasonably withheld or delayed.

"Negotiation Period" shall have the meaning set forth in Section 16.1.2.

"NERC" shall mean the North American Electric Reliability Council, including the regional reliability organization(s) to which the Southern Operating Companies belong, and any successor organization(s).

"Non-Defaulting Party" shall have the meaning set forth in Section 12.1.

"Northwest Annual Peak Demand" shall mean the amount of the Adjusted Hourly Demand for the Northwest Division for the one Hour period during the Peak Season in which the Northwest Division experiences the highest Adjusted Hourly Demand.

"Northwest Division" shall have the meaning set forth in the preamble of this Agreement.

SOURCE



Source: Reg # 1

43-1
1-2
1

Invoice

Southern Company Services, Inc.
Financial & Contract Services

Florida Public Utilities Co.
Fuel Cost Recovery Clause
Dkt.# 140001-EI, ACN 14-027-4-2
TYE 2013

SOUTHERN COMPANY

600 North 18th Street
Bin 2S-8810 Corp Hdqtrs
Birmingham, AL 35203

FLORIDA PUBLIC UTILITIES COMPANY
ATTN: Buddy Shelley / Beverly Campbell
401 South Dixie Highway
P O Box 3395
West Palm Beach, FL 33402-3395

Title Southern Co Bill (Trans)

Date: Jul 01, 2013

dshelley@fpuc.com, bcampbell@fpuc.com, kabaker@chpk.com
FAX: (561) 833-0151 PHONE: (561) 838-1735

CONFIDENTIAL

BM
3/27/14

Southern Company Services, Inc., acting solely as agent for Alabama Power Company, Georgia Power Company, Gulf Power Company and Mississippi Power Company and in accordance with the agreement for Network Integration Transmission Service for FLORIDA PUBLIC UTILITIES COMPANY under the Southern Companies Open Access Transmission Tariff:

We charge your account with transmission service for June, 2013 as follows:

Transmission Service Charges

(Based on the 12 month rolling AVG transmission peak as of April, 2013)

Attachment K Costs for May, 2013

FERC Annual Charge for May, 2013

43-1
1-3
11

43-1
1-3
11

Charges

Ancillary Services

Scheduling, System Control and Dispatch

Reactive Supply and Voltage Control from Generation Sources

Reactive Supply and Voltage Control from Generation Sources

43-1/1-3/11

Rate \$/kW-mo

Charges

Other Charges

Distribution Facilities Charges

Meter Reading & Processing Charge (Altha)

Meter Reading & Processing Charge (Blountstown)

Meter Reading & Processing Charge (Caverns Road)

Meter Reading & Processing Charge (Chipola)

Meter Reading & Processing Charge (Marianna 1 & 2)

Charges

NET DUE SOUTHERN TRANSMISSION

Transmission payment due 20 days after receipt of invoice. Invoice date starts upon date faxed/e-mailed. Interest on late payments will be included on subsequent invoice.

Please remit via wire or ACH transfer (including invoice # [redacted])

[Large redacted area]

If remittance is made by check, payments should be mailed to: Southern Company Services, Inc.; Attention: Genie Brown; Bin 2S-8810; 600 North 18th Street; Birmingham, Alabama 35203.

For questions regarding this invoice, please contact Genie Brown at 205-257-6828.

SCS Federal Tax ID No. - 63-0274273

Source Reg # 2

43-1
1-3



SOURCE

Florida Public Utilities Co.
 Fuel Cost Recovery Clause
 Dkt.# 140001-EI, ACN 14-027-4-2
 TYE 2013

B3M 3/27/14 Page 2 of 2 4/1/14



Title Gulf Power Bill (Nov)

Customer Name
 FL PUBLIC UTILITIES

Account Number

Current Amount
 Delinquent After

Dec 16, 2013

Total Due

Electric Service

Electric Service

Usage Information

Tot kWh
 Pk kW

Rate Name	Service Period	Meter #
MKT Based	Nov 1 - Nov 30	

Historical Data

	Days	KWH	KWH/DAY
This Mth	31		
Last Mth	30		
1 Yr Ago	30		

REVENUE MONTH September-13

EXPLANATION OF CHARGES

Mkt Based - FL Public Utilities	10/01- 10/31
Capacity Charge	43-1/1-2/14
Energy Charge	
Total Electric Svc Costs	43-1/1pc ✓

CONFIDENTIAL

Source: Reg # 2

43-1
 1-4

SOURCE



Invoice

Southern Company Services, Inc.
Financial & Contract Services

600 North 18th Street
Bin 2S-8810 Corp Hdgtrs
Birmingham, AL 35203

Florida Public Utilities Co.
Fuel Cost Recovery Clause
Dkt.# 140001-EI, ACN 14-027-4-2
TYE 2013



Title So. Co. Bill (New)

Date: Dec 02, 2013

FLORIDA PUBLIC UTILITIES COMPANY
ATTN: Buddy Shelley / Tiffany Palmer
401 South Dixie Highway
P O Box 3395
West Palm Beach, FL 33402-3395

dshelley@fpuc.com, tpalmer@fpuc.com, kcraig@ckpk.com
kabaker@ckpk.com, rromeo@ckpk.com
FAX: (561) 833-0151 PHONE: (561) 838-1735

CONFIDENTIAL

BM
3/27/14

Southern Company Services, Inc., acting solely as agent for Alabama Power Company, Georgia Power Company, Gulf Power Company and Mississippi Power Company and in accordance with the agreement for Network Integration Transmission Service for FLORIDA PUBLIC UTILITIES COMPANY under the Southern Companies Open Access Transmission Tariff.

We charge your account with transmission service for November, 2013 as follows:

Transmission Service Charges

(Based on the 12 month rolling AVG transmission peak as of September, 2013)

Attachment K Costs for October, 2013

FERC Annual Charge for October, 2013

	Charges
[Redacted]	[Redacted]
[Redacted]	[Redacted]
[Redacted]	[Redacted]
Rate \$/KW-mo	Charges
[Redacted]	[Redacted]
[Redacted]	[Redacted]
[Redacted]	[Redacted]

Ancillary Services

Scheduling, System Control and Dispatch

Reactive Supply and Voltage Control from Generation Sources

Reactive Supply and Voltage Control from Generation Sources

Other Charges

Distribution Facilities Charges

Meter Reading & Processing Charge (Altha)

Meter Reading & Processing Charge (Blountstown)

Meter Reading & Processing Charge (Caverns Road)

Meter Reading & Processing Charge (Chipola)

Meter Reading & Processing Charge (Marianna 1 & 2)

Charges
[Redacted]
[Redacted]
[Redacted]
[Redacted]
[Redacted]
[Redacted]
[Redacted]
[Redacted]
[Redacted]
[Redacted]
[Redacted]
[Redacted]

NET DUE SOUTHERN TRANSMISSION

Transmission payment due 20 days after receipt of invoice. Invoice date starts upon date faxed/e-mailed. Interest on late payments will be included on subsequent invoice.

Please remit via wire or ACH transfer (including invoice # [Redacted])



If remittance is made by check, payments should be mailed to: Southern Company Services, Inc.; Attention: Genie Brown; Bin 2S-8810; 600 North 18th Street; Birmingham, Alabama 35203.

For questions regarding this invoice, please contact Genie Brown at 205-257-6828.

SCS Federal Tax ID No. - 63-0274273

Source: Reg # 2

43-1
1-5

SOURCE



PBC



21 West Church Street, Jacksonville, FL 32202-3139
Phone: 904.655.6000 • Fax: 904.655.7990 • Internet: jea.com

CONFIDENTIAL

BM
3/25/14
Page 1 of 2
4/13

Customer Name: FLA PUBLIC UTIL CO

Account # [REDACTED]

Cycle: 12 Bill Date: 07/12/13

Florida Public Utilities Co.
Fuel Cost Recovery Clause
Dkt.# 140001-EI, ACN 14-027-4-2
TYE 2013

Title JEA Bill

TOTAL SUMMARY OF CHARGES

Electric [REDACTED]

(A complete breakdown of charges can be found on the following pages.)

Total New Charges: [REDACTED]

43-1/303 X

Please pay [REDACTED] 08/05/13 to avoid [REDACTED] payment fee.

Benchmark your facility's energy use relative to its past performance. Set goals then track performance.

DUPLICATE COPY

Invoice Received By JR on 7-16-13
(initials) (Date)

STINV: YES | NO | NA STPR: YES | NO | NA

Received By: [REDACTED]

Scanned Dated: 7-16-13 PR# [REDACTED]

1 of 2

A LATE PAYMENT FEE WILL BE ASSESSED TO ALL UNPAID BALANCES

Previous Balance	Payments Received	Balance Before New Charges	New Charges	Total Due
[REDACTED]	[REDACTED]	[REDACTED]	[REDACTED]	[REDACTED]

WE APPRECIATE YOUR BUSINESS

PLEASE DETACH AND RETURN PAYMENT STUB BELOW WITH TOTAL DUE IN ENVELOPE PROVIDED.

Additional information on reverse side. →



Add \$ _____ to my monthly bill; \$ _____ for Neighbor to Neighbor and/or \$ _____ for the Prosperity Scholarship Fund. I will notify JEA when I no longer wish to contribute.

Check here for telephone/mail address correction and fill in on reverse side.

Previous Balance	Payments Received	Balance Before New Charges	New Charges	Total Due
[REDACTED]	[REDACTED]	[REDACTED]	[REDACTED]	[REDACTED]



FLA PUBLIC UTIL CO
PO BOX 418
FERNANDINA BEACH FL 32035

** JEA **
PO BOX 45047
JACKSONVILLE FL 32232-5047

2

Source Reg # 2

43-1
3-1 p1

3

1203304805420000000000004276013932010100000001200018

SOURCE





21 West Church Street, Jacksonville, FL 32202-3139
Phone: 904.665.6000 • Fax: 904.665.7990 • Internet: jea.com

CONFIDENTIAL

4/15/13

Customer Name: FLA PUBLIC UTIL CO

Account # [REDACTED]

Cycle: 12

Bill Date: 07/12/13

ELECTRIC SERVICE

Billing Rate: Energy Service FPU

Service Address: 582 WILSON NECK DR

Service Period: 05/31/13-06/28/13 Reading Date: 06/28/13

Service Point: Industrial - Electric

Meter Number	Days Billed	Current Reading	Reading Type	Meter Constant	Consumption
111315767	28		Regular	[REDACTED]	[REDACTED]
111315767	28		Regular	[REDACTED]	[REDACTED]
111315767	28		Regular	[REDACTED]	[REDACTED]
111315767	28	OFF	Regular	[REDACTED]	[REDACTED]
111315767	28	OFF	Regular	[REDACTED]	[REDACTED]
111315767	28	OFF	Regular	[REDACTED]	[REDACTED]

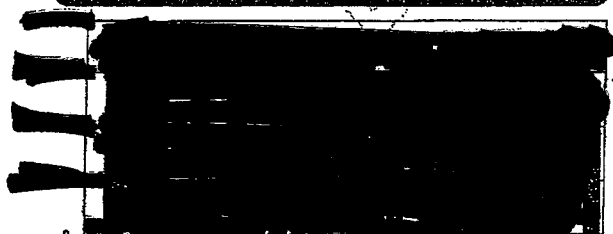
41-4811

- Demand Charge \$ [REDACTED]
- Energy Charge [REDACTED]
- Environmental Charge [REDACTED]
- Fuel Charge [REDACTED]
- Transmission Charge [REDACTED]
- Ancillary Charge [REDACTED]
- Reactive Supply and Voltage Control [REDACTED]

Calculation on p3. ✓

TOTAL CURRENT ELECTRIC CHARGES

CONSUMPTION HISTORY



Jul Aug Sep Oct Nov Dec Jan Feb Mar Apr May Jun Jul 2012 2013

Water 00s Gal Electric Kwh

	1 year ago	Last Month	This Month	Average Daily
Total Kwh used	[REDACTED]	[REDACTED]	[REDACTED]	[REDACTED]
Total Gallons used	[REDACTED]	[REDACTED]	[REDACTED]	[REDACTED]

Invoice Received By JR on 7-16-13
(Initials) (Date)

STINV: YES | NO | NA STPR: YES | NO | NA

Received By: _____ 431

Scanned Date: 7-16-13 PR# [REDACTED] 3-1P



SOURCE

CONFIDENTIAL

4/13/13

JEA Monthly Bill Calculation

	June 2013	Cost/Unit	Total
Generation Demand Charge (KW)	Amount p4	p4	p2
Energy Charge (KWH) **	[REDACTED]	[REDACTED]	[REDACTED]
Environmental Charge (KWH)	[REDACTED]	[REDACTED]	[REDACTED]
Fuel Charge (KWH) *	[REDACTED]	43.14 3.3	[REDACTED]
May Fuel Charge Credit (KWH)	[REDACTED]	[REDACTED]	[REDACTED]
Transmission Charge (KW)	[REDACTED]	[REDACTED]	[REDACTED]
Ancillary Charge (KW)	[REDACTED]	[REDACTED]	[REDACTED]
Reactive Supply & Voltage Control (KW)	[REDACTED]	[REDACTED]	[REDACTED]
	Total		[REDACTED]

April includes a fuel credit [REDACTED] reduction in natural gas prices

43-1
3-1P3

SOURCE 

Florida Public Utilities Company
 Northeast Florida Electric
 June 2013 Purchased Power Bill Calculation

CONFIDENTIAL

Chris Snyder:
 CHANGED EFFECTIVE
 10/1/10 FROM

4/13/13

BILLING FACTORS		
Charge	Units	Rate
Demand	kw	\$ [REDACTED] P3
Energy Charge	kwh	\$ [REDACTED]
Fuel Charge	kwh	\$ [REDACTED]
Environmental Charge	kwh	\$ [REDACTED]
Transmission Charge	kw	\$ [REDACTED]
Reactive Supply and Voltage Control	kw	\$ [REDACTED]
Transmission Loss	%	[REDACTED]

Curtis D. Young:
 CHANGED EFFECTIVE
 10/1/12 FROM

Curtis D. Young:
 FUEL RATE CHANGE
 EFFECTIVE 7/1/12 FROM

Chris Snyder:
 ADDED EFFECTIVE 5/1/09

BILLING DETERMINANTS		
Charge	Units	Amount
Demand	kw	[REDACTED] P2
Energy Charge	kwh	[REDACTED]
Fuel Charge	kwh	[REDACTED]
Environmental Charge	kwh	[REDACTED]
Transmission Charge	kw	[REDACTED]
Reactive Supply and Voltage Control	kw	[REDACTED]

✓ = Agreed to Prior Audit
 WP 44-2/1-1 p 2.

TRANSMISSION CHARGE DETERMINANTS CALCULATION		
Determinant	Units	Amount
Nassau Peak KW	kw	[REDACTED]
Smurfit Contract Obligation	kw	[REDACTED]
Smurfit Received	kw	[REDACTED] P5
Smurfit Delivered	kw	[REDACTED]
Rayonier Contract Obligation	kw	[REDACTED] P6
Rayonier Received	kw	[REDACTED]
Rayonier Delivered	kw	[REDACTED]
NETWORK LOAD BEFORE LINE LOSS	kw	[REDACTED]
LINE LOSS FACTOR	factor	[REDACTED]
NETWORK LOAD	kw	[REDACTED] A

NETWORK LOAD BEFORE LINE LOSS EQUALS
Nassau Peak KW
PLUS: Smurfit Contract Obligation
LESS: Minimum (Smurfit CO, Smurfit Received)
PLUS: Smurfit Delivered
PLUS: Rayonier Contract Obligation
LESS: Minimum (Rayonier CO, Rayonier Received)
PLUS: Rayonier Delivered

Note: The rates are revised and effective every Oct 1.
 June was tested and agreed to the prior
 audit documentation.

43-1
 3-1 p4

SOURCE 

Customer Load Profile Report

6/28/2013 2:18:39PM

Sea Peak Rockton

(In Demand Units)

Account Number
 Account Name
 Meter ID
 Meter Type
 Interval Size 15
 Report Interval 1
 Rolling Demand Interval 1

[REDACTED]

Address
 No 8th St

Report Start Date 5/31/2013 9:30:00 AM
 Report Stop Date 6/28/2013 9:30:00 AM

Fernandina bch
 FL

CONFIDENTIAL

Read Date/Time	Channel 1		Channel 2		Channel 3		Channel 4	
	Ch1/KW Del	Status	Ch2/KW Rcvd	Status	Ch3/Kvar Del	Status	Ch4/Kvar Rcv	Status
6/12/2013 1:30PM	[REDACTED]	DST	[REDACTED]	DST	[REDACTED]	DST	[REDACTED]	DST
6/12/2013 1:45PM	[REDACTED]	DST	[REDACTED]	DST	[REDACTED]	DST	[REDACTED]	DST
6/12/2013 2:00PM	[REDACTED]	DST	[REDACTED]	DST	[REDACTED]	DST	[REDACTED]	DST
6/12/2013 2:15PM	[REDACTED]	DST	[REDACTED]	DST	[REDACTED]	DST	[REDACTED]	DST
6/12/2013 2:30PM	[REDACTED]	DST	[REDACTED]	DST	[REDACTED]	DST	[REDACTED]	DST
6/12/2013 2:45PM	[REDACTED]	DST	[REDACTED]	DST	[REDACTED]	DST	[REDACTED]	DST
6/12/2013 3:00PM	[REDACTED]	DST	[REDACTED]	DST	[REDACTED]	DST	[REDACTED]	DST
6/12/2013 3:15PM	[REDACTED]	DST	[REDACTED]	DST	[REDACTED]	DST	[REDACTED]	DST
6/12/2013 3:30PM	[REDACTED]	DST	[REDACTED]	DST	[REDACTED]	DST	[REDACTED]	DST
6/12/2013 3:45PM	[REDACTED]	DST	[REDACTED]	DST	[REDACTED]	DST	[REDACTED]	DST
6/12/2013 4:00PM	[REDACTED]	DST	[REDACTED]	DST	[REDACTED]	DST	[REDACTED]	DST
6/12/2013 4:15PM	[REDACTED]	DST	[REDACTED]	DST	[REDACTED]	DST	[REDACTED]	DST
6/12/2013 4:30PM	[REDACTED]	DST	[REDACTED]	DST	[REDACTED]	DST	[REDACTED]	DST
6/12/2013 4:45PM	[REDACTED]	DST	[REDACTED]	DST	[REDACTED]	DST	[REDACTED]	DST
6/12/2013 5:00PM	[REDACTED]	DST	[REDACTED]	DST	[REDACTED]	DST	[REDACTED]	DST
6/12/2013 5:15PM	[REDACTED]	DST	[REDACTED]	DST	[REDACTED]	DST	[REDACTED]	DST
6/12/2013 5:30PM	[REDACTED]	DST	[REDACTED]	DST	[REDACTED]	DST	[REDACTED]	DST
6/12/2013 5:45PM	[REDACTED]	DST	[REDACTED]	DST	[REDACTED]	DST	[REDACTED]	DST
6/12/2013 6:00PM	[REDACTED]	DST	[REDACTED]	DST	[REDACTED]	DST	[REDACTED]	DST
6/12/2013 6:15PM	[REDACTED]	DST	[REDACTED]	DST	[REDACTED]	DST	[REDACTED]	DST
6/12/2013 6:30PM	[REDACTED]	DST	[REDACTED]	DST	[REDACTED]	DST	[REDACTED]	DST

p4 *#9* *995* *p4*

Ch1 kW Total Del Only F+H
 Ch5 Apparent KVA Total

Ch2 kW Total Rcvd Only F+H

Ch3 kvar Total Lag Only F+H IEEE

Ch4 kvar Total Lead Only F+H IEEE

43-1
3-1-13

SOURCE



Handwritten signature/initials

Customer Load Profile Report

6/28/2013 2:22:09PM

Tea Peak - Raymer

(In Demand Units)

Account Number [REDACTED]
 Account Name [REDACTED]
 Meter ID [REDACTED]
 Meter Type [REDACTED]
 Interval Size 15
 Report Interval 1
 Rolling Demand Interval 1

Address
 Gum St.
 Fernandina
 FL

Report Start Date 5/31/2013 9:30:00 AM
 Report Stop Date 6/28/2013 9:30:00 AM

CONFIDENTIAL

Read Date/Time	Channel 1		Channel 2		Channel 3		Channel 4	
	Ch1/KW Del	Status	Ch2/KW Rcv	Status	Ch3/Kvar Del	Status	Ch4/Kvar Rcv	Status
6/12/2013 1:30PM	[REDACTED]	DST	[REDACTED]	DST	[REDACTED]	DST	[REDACTED]	DST
6/12/2013 1:45PM	[REDACTED]	DST	[REDACTED]	DST	[REDACTED]	DST	[REDACTED]	DST
6/12/2013 2:00PM	[REDACTED]	DST	[REDACTED]	DST	[REDACTED]	DST	[REDACTED]	DST
6/12/2013 2:15PM	[REDACTED]	DST	[REDACTED]	DST	[REDACTED]	DST	[REDACTED]	DST
6/12/2013 2:30PM	[REDACTED]	DST	[REDACTED]	DST	[REDACTED]	DST	[REDACTED]	DST
6/12/2013 2:45PM	[REDACTED]	DST	[REDACTED]	DST	[REDACTED]	DST	[REDACTED]	DST
6/12/2013 3:00PM	[REDACTED]	DST	[REDACTED]	DST	[REDACTED]	DST	[REDACTED]	DST
6/12/2013 3:15PM	[REDACTED]	DST	[REDACTED]	DST	[REDACTED]	DST	[REDACTED]	DST
6/12/2013 3:30PM	[REDACTED]	DST	[REDACTED]	DST	[REDACTED]	DST	[REDACTED]	DST
6/12/2013 3:45PM	[REDACTED]	DST	[REDACTED]	DST	[REDACTED]	DST	[REDACTED]	DST
6/12/2013 4:00PM	[REDACTED]	DST	[REDACTED]	DST	[REDACTED]	DST	[REDACTED]	DST
6/12/2013 4:15PM	[REDACTED]	DST	[REDACTED]	DST	[REDACTED]	DST	[REDACTED]	DST
6/12/2013 4:30PM	[REDACTED]	DST	[REDACTED]	DST	[REDACTED]	DST	[REDACTED]	DST
6/12/2013 4:45PM	[REDACTED]	DST	[REDACTED]	DST	[REDACTED]	DST	[REDACTED]	DST
6/12/2013 5:00PM	[REDACTED]	DST	[REDACTED]	DST	[REDACTED]	DST	[REDACTED]	DST
6/12/2013 5:15PM	[REDACTED]	DST	[REDACTED]	DST	[REDACTED]	DST	[REDACTED]	DST
6/12/2013 5:30PM	[REDACTED]	DST	[REDACTED]	DST	[REDACTED]	DST	[REDACTED]	DST
6/12/2013 5:45PM	[REDACTED]	DST	[REDACTED]	DST	[REDACTED]	DST	[REDACTED]	DST
6/12/2013 6:00PM	[REDACTED]	DST	[REDACTED]	DST	[REDACTED]	DST	[REDACTED]	DST
6/12/2013 6:15PM	[REDACTED]	DST	[REDACTED]	DST	[REDACTED]	DST	[REDACTED]	DST
6/12/2013 6:30PM	[REDACTED]	DST	[REDACTED]	DST	[REDACTED]	DST	[REDACTED]	DST

(P4) #9

(P4)

Ch1 kW Total Del Only F+H
 Ch5 Apparent kVA Total

Ch2 kW Total Rcvd Only F+H

Ch3 kvar Total Lag Only F+H IEEE

Ch4 kvar Total Lead Only F+H IEEE

$\frac{431}{3-1} P_{PO}$

SOURCE

23

[Handwritten signature]

CONFIDENTIAL

PBC

Florida Public Utilities Co.
Fuel Cost Recovery Clause
Dkt.# 140001-EI, ACN 14-027-4-2
TYE 2013

BM 4/14/13
3/25/14

Title Rock-Tenn Bill

ROCK-TENN COMPANY
MILL DIVISION
FERNANDINA BEACH, FLORIDA 32034

June 28, 2013

FLORIDA PUBLIC UTILITIES COMPANY
P O DRAWER C
WEST PALM BEACH, FLORIDA 33042

VENDOR [REDACTED]
DUE BY 7/20/13

6/28/2013 5/31/2013 CONSUMPTION (METER READ X METER MULTIPLIER)

[REDACTED] 4-4 ✓

ENERGY CHARGE (JEAN [REDACTED] 42 1/2 - 1p3 ✓)

ADJUSTED ENERGY CHARGE FOR VOIDED TRANSMISSION LOSSES:

[REDACTED] 44 3/4 ✓

COGENERATED POWER CHARGE [REDACTED] -1/3 p4 ✓

LESS CUSTOMER CHARGE [REDACTED]

TOTAL [REDACTED]

* = Recal. for accuracy

Source: Reg #1

PO # [REDACTED]



SOURCE

43-1
3-2

PBC

CONFIDENTIAL

Rayonier Performance Fibers, LLC
P. O. Box 2002
Fernandina Beach, Florida 32034

4/14/12
B7M
3/25/14

Florida Public Utilities Company
P. O. Box 418
Fernandina Beach, FL 32305

Date: 6/28/12
Due Date: 7/18/12
Vendor No.: [REDACTED]

Previous Reading	Current Reading	Consumption	Rate	Amount
------------------	-----------------	-------------	------	--------

5/31/12 6/28/12
9:30 AM 9:30 AM

Month: June
Season: Summer

41-4 v
PI

On Peak Purchases (kwh)
Off Peak Purchases (kwh)
Total Purchases (kwh)

[REDACTED] was met so
[REDACTED] capacity

Committed Capacity (KW)

44-2p2

44-2 p6 h

On Peak Hours
Planned On-Peak Outage Hou
Off Peak Hours
Planned Off-Peak Outage Hou

Factor
Factor

Minimum Requirement (kwh)
Minimum Requirement (kwh)

On Peak Minimum Energy Supply Met
Off Peak Minimum Energy Supply Met

Yes
Yes

On Peak Price
Off Peak Price
Energy Only Price

[REDACTED] use Base
[REDACTED]

Total On Peak Energy Purchases

Total Off Peak Energy Purchases

[REDACTED] @ [REDACTED]
[REDACTED] @ [REDACTED]

Total: [REDACTED]
43-1/3 P3

Less Customer Charge: [REDACTED]

Total Energy Purchases Less Customer Charge: [REDACTED]

X = Tied to metering input sheet

X = Agreed to Seasonal Energy Capacity Rate schedule

(C) = [REDACTED] ✓

(D) = [REDACTED] ✓

Source: Reg # 1

43-1
3-3

Rayonier Bill



6/28/2013

(Cogeneration TOU Payments 06-13)

SOURCE

PBC

JEA Monthly Bill Calculation

Title JEA Bill Calculation (Nov)

CONFIDENTIAL

	November		
	Amount	Cost/Unit	Total
Generation Demand Charge (KW)	[REDACTED]	[REDACTED]	[REDACTED]
Energy Charge (KWH) **	[REDACTED]	[REDACTED]	[REDACTED]
Environmental Charge (KWH)	[REDACTED]	[REDACTED]	[REDACTED]
Fuel Charge (KWH) *	[REDACTED]	[REDACTED]	[REDACTED]
April Fuel Charge Credit (KWH)	[REDACTED]	[REDACTED]	[REDACTED]
Transmission Charge (KW)	[REDACTED]	[REDACTED]	[REDACTED]
Ancillary Charge (KW)	[REDACTED]	[REDACTED]	[REDACTED]
Reactive Supply & Voltage Control (KW)	[REDACTED]	[REDACTED]	[REDACTED]
Total			[REDACTED]

44.4

BM [REDACTED]

43-1/3 p3

** April includes a fuel credit of [REDACTED] due to reduction in natural gas prices
 *** October 1, 2013 - Increase in Demand [REDACTED] and decrease in other energy charge from [REDACTED]

Source: JEA email to FPUC (Req #2)



SOURCE _____

43-1
3-4

CONFIDENTIAL

4-1-11
BDM
3/27/11

Florida Public Utilities Co.
Fuel Cost Recovery Clause
Dkt.# 140001-EI, ACN 14-027-4-2
TYE 2013

PBC

Title Rock-Tenn Bill (Nov)

ROCK-TENN COMPANY
MILL DIVISION
FERNANDINA BEACH, FLORIDA 32034

November 27, 2013

FLORIDA PUBLIC UTILITES COMPANY
P.O. DRAWER C
WEST PALM BEACH, FLORIDA 33042

VENDOR [REDACTED]

DUE BY: 12/20/2013

11/27/2013 10/31/2013 CONSUMPTION (METER READ X METER MULTIPLIER)

ENERGY CHARGE (JEA)

[REDACTED] [REDACTED] [REDACTED] (44-4)

ADJUSTED ENERGY CHARGE FOR VOIDED TRANSMISSION LOSSES:

@ [REDACTED] [REDACTED] = [REDACTED] (44-3p2)

COGENERATED POWER CHARGE

[REDACTED] @ [REDACTED] [REDACTED] (3-1/3p4)

LESS CUSTOMER CHARGE

\$ [REDACTED]

TOTAL

\$ [REDACTED]

PO # [REDACTED]

Source: log # 1



SOURCE

43-1
3-5

PBC

Rayonier Performance Fibers, LLC
P. O. Box 2002
Fernandina Beach, Florida 32034

Florida Public Utilities Co.
Fuel Cost Recovery Clause
Dkt.# 140001-EI, ACN 14-027-4-2
TYE 2013

Title Rayonier Bill (November)

Florida Public Utilities Company
P. O. Box 418
Fernandina Beach, FL 32305

CONFIDENTIAL

Date: 11/27/13
Due Date: 12/17/13
Vendor No.: [REDACTED]

4/1/14
3727117

Previous Reading	Current Reading	Consumption	Rate	Amount
------------------	-----------------	-------------	------	--------

10/31/13 11/27/13
9:30 AM 9:30 AM

Month: November
Season: November

On Peak Purchases (kwh)
Off Peak Purchases (kwh)
Total Purchases (kwh)

Committed Capacity (KW)

On Peak Hours [REDACTED] hours
Planned On-Peak Outage Hour [REDACTED]s
Off Peak Hours [REDACTED]
Planned Off-Peak Outage Hour [REDACTED]

Factor [REDACTED] Minimum Requirement (kwh) [REDACTED]
Factor [REDACTED] Minimum Requirement (kwh) [REDACTED]

On Peak Minimum Energy Supply Met Yes
Off Peak Minimum Energy Supply Met Yes

On Peak Price [REDACTED]
Off Peak Price [REDACTED]
Energy Only Price [REDACTED]

Total On Peak Energy Purchases

Total Off Peak Energy Purchases

E [REDACTED] @ A [REDACTED]
F [REDACTED] @ B [REDACTED]

Total: [REDACTED] 43-1/3 p34

Less Customer Charge: [REDACTED]

Total Energy Purchases Less Customer Charge: [REDACTED]

Source: Reg # 1

43-1
3-4

Rayonier Bill
SOURCE



11/27/2013

Cogeneration TOU Payments (Effec. Oct. 2013) 11-13

Young Curtis

Florida Public Utilities Co.
Fuel Cost Recovery Clause
Dkt.# 140001-EI, ACN 14-027-4-2
TYE 2013

From: Roye, Janine
Sent: Friday, May 24, 2013 4:47 PM
To: Cutshaw, Mark
Cc: Grant, William; Puentes, Jorge; Baker, Kahli; Moyer, Leslie; Young Curtis; Martin, Cheryl; Cassel, Michael
Subject: RE: Your JEA eBill is ready: FLA PUBLIC UTIL CO

Title JEA Fuel Credit

4/14

Mark

Sarah was able to have the payment process stopped, and will regenerate a new payment.

Have a great weekend
Janine

BM
4/9/14

CONFIDENTIAL

From: Roye, Janine
Sent: Friday, May 24, 2013 2:07 PM
To: Cutshaw, Mark
Cc: Grant, William; Puentes, Jorge; Baker, Kahli; Moyer, Leslie; Young Curtis; Martin, Cheryl; Cassel, Michael; Bittle Sarah
Subject: RE: Your JEA eBill is ready: FLA PUBLIC UTIL CO

Mark

Spoke to Sarah regarding the first JEA bill for April. The bill was due today 5/24 and the wire was sent at 2:09. Will be checking with Matt Dewey to see how this needs to be handled.

Thanks
Janine

From: Cutshaw, Mark
Sent: Friday, May 24, 2013 1:16 PM
To: Roye, Janine
Cc: Grant, William; Puentes, Jorge; Baker, Kahli; Moyer, Leslie; Young Curtis; Martin, Cheryl; Cassel, Michael
Subject: FW: Your JEA eBill is ready: FLA PUBLIC UTIL CO

Janine,

Below is a link to a revised JEA bill for April that we received today. This bill includes a fuel credit [redacted] described below. We have already processed the original April JEA bill which may have already been paid. Please check into how this revised bill should be handled since there is a significant credit included. I have attached an updated bill calculation form for April which reflects the credit.

PA

Great News for our Customers! The Fuel Credit was approved by the Board.

JEA's Board approved fuel credit refunded at today's board meeting. Beginning with your April bill, you should see a full credit [redacted] consumed in March 2013. You will see a line item on your bill reflecting this credit. (This applies to your residential bill as well). Natural gas prices have been lowered than expected because of JEA's savings on fuel costs.

SOURCE



Rec# 2

43-1
3-7

PI

This is a one-time credit.

The refund will appear in the April bill and will be calculated with the following formula: [REDACTED]
Please let me know if you have any questions or comments. Thanks!

CONFIDENTIAL

4/14/13



Printed on Recycled Paper

Check Out the Fuel Credit on Your Bill This Month!

Fuel Credit Enclosed

Check the electric detail portion of your enclosed bill to see your fuel credit. This one-time credit came from JEA's savings on fuel costs because the price of natural gas was lower than expected. Now we're passing along those savings to you.

Information Changes on You

In order to help you better understand charges, we've broken down some of the detail section of your bill and explained charges on the back of the first page. There has not been a pricing change. more detailed explanation of your charges.

P. Mark Cutshaw, General Manager
Florida Public Utilities Company
911 South 8th Street
Fernandina Beach, Florida 32034
(904)277-1957 office
(904)753-1272 cell

From: ebill@jea.com [mailto:ebill@jea.com]
Sent: Friday, May 24, 2013 8:51 AM
To: Cutshaw, Mark
Subject: Your JEA eBill is ready: FLA PUBLIC UTIL CO

To help ensure delivery of the email communication(s), please add the following address to your email address book: jea@jea.com



<input type="checkbox"/>	<input type="checkbox"/>
--------------------------	--------------------------



2

SOURCE

43-1
3-7

P2



21 West Church Street, Jacksonville, FL 32202-3139
Phone: 904.683.8000 • Fax: 904.685.7990 • Internet: jea.com

4/14

Customer Name: FLA PUBLIC UTIL CO

Account: [REDACTED]

Cycle: 12 Bill Date: 05/21/13

CONFIDENTIAL

TOTAL SUMMARY OF CHARGES

Electricity [REDACTED]

(A complete breakdown of charges can be found on the following pages.)

Total New Charges: [REDACTED]

Please pay \$1,151,798.02 by 06/12/13 to avoid 1.5% late payment fee.

JEA is expanding its ENERGY STAR appliance program to commercial customers. If you're making a bulk purchase of refrigerators and/or clothes washers for your business, you can receive a \$25.00 rebate per appliance. CFLs may also be purchased in bulk. Visit jea.com/rebates for details.

ADDED AN 'A' - VND SENT
REVISED INV.
SJB 5/24/13

PR# [REDACTED]

MAY 24 2013

REC'D BY: SB

DUPLICATE COPY

A LATE PAYMENT FEE WILL BE ASSESSED TO ALL UNPAID BALANCES



WE APPRECIATE YOUR BUSINESS

PLEASE DETACH AND RETURN PAYMENT STUB BELOW WITH TOTAL DUE IN ENVELOPE PROVIDED.

Additional information on reverse side. →



Add \$_____ to my monthly bill: \$_____ for Neighbor to Neighbor and/or \$_____ for the Prosperity Scholarship Fund. I will notify JEA when I no longer wish to contribute.

Check here for telephone/mail address correction and fill in on reverse side.

Account: [REDACTED]	Bill Date: 05/21/13	Please pay by 06/12/13 to avoid 1.5% late payment fee.
[REDACTED]	[REDACTED]	[REDACTED]

43-1/3p3

FLA PUBLIC UTIL CO
PO BOX 418
FERNANDINA BEACH FL 32035

** JEA **
PO BOX 46047
JACKSONVILLE FL 32232-5047

2

3

122330480542000000000000004115179302010100000001200010



SOURCE

43-1
3-7

P3

CONFIDENTIAL

4/14/13



21 West Church Street, Jacksonville, FL 32202-3199
Phone: 904.665.8000 • Fax: 904.665.7990 • Internet: jea.com

Customer Name: FLA PUBLIC UTIL CO

Account: [REDACTED]

Cycle: 12

BN Date: 05/21/13

ELECTRIC SERVICE

Billing Rate: Energy Service FPU

Service Address: 582 WILSON NECK DR

Service Period: 03/29/13-04/30/13 Reading Date: 04/30/13

Service Point: Industrial - Electric

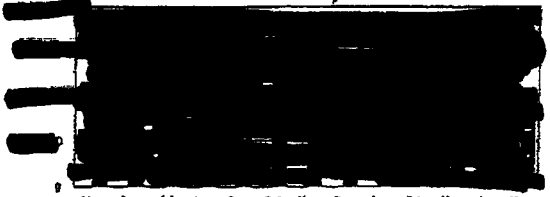
Meter Number	Days Billed	Current Reading	Reading Type	Meter Constant	Consumption
111315787	32		Regular	1	[REDACTED]
111315767	32		Regular	1	[REDACTED]
111315767	32		Regular	1	[REDACTED]
111315767	32	[REDACTED]	Regular	1	[REDACTED]
111315767	32	[REDACTED]	Regular	1	[REDACTED]
111315767	32	[REDACTED]	Regular	1	[REDACTED]

Demand Charge [REDACTED]
 Energy Charge [REDACTED]
 Environmental Charge [REDACTED]
 Fuel Charge [REDACTED]
 Fuel Credit (43-1/2 p3) [REDACTED]
 Transmission Charge [REDACTED]
 Ancillary Charge [REDACTED]
 Reactive Supply and Voltage Control [REDACTED]

PR# 264491
 MAY 24 2013
 REC'D BY: SLB

TOTAL CURRENT ELECTRIC CHARGES

CONSUMPTION HISTORY



May 2012	Jun	Jul	Aug	Sep	Oct	Nov	Dec	Jan	Feb	Mar	Apr	May 2013
<input type="checkbox"/> Water Use Gal <input type="checkbox"/> Electric: Kwh												
		1 year ago	Last Month	This Month	Average Daily							
Total Kwh used		[REDACTED]										
Total Gallons used		[REDACTED]										

2

3



SOURCE

43-1
3-7 PH

EXAMPLE A: COSTS OF CURRENT SUPPLY DETERMINE GOING-IN PRICES

4/14

CONTEXT: The costs (input prices) and parameters shown in the equations below reflect the generation and transmission resources of Florida Public Utilities Company. In view of these resources, the prices and input parameters are relevant for a load change significantly greater than that which is envisioned under the Agreement.

Energy Price for Week Day and Weekend Hours

Energy Charge = [REDACTED]

Energy Price = [REDACTED]

CONFIDENTIAL

Capacity Price For Week Day Non-Peak and Weekend Hours

C.Charge^G_{Energy} = [REDACTED]

Capacity Price^{Non-PkHrs} = [REDACTED]

Capacity Price^{Non-PkHrs} = [REDACTED]

Capacity Price For Week Day Peak Hours (shown for winter months)

C.Charge^G_{Demand} = [REDACTED] * [REDACTED]

C.Charge^G_{Demand} = [REDACTED]

C.Charge^G_{Energy} = [REDACTED]

C.Charge^G_{Energy} = [REDACTED]

C.Charge^T = [REDACTED]

C.Charge^T = [REDACTED] / month

Capacity Price^{PkHrs} = [REDACTED]

Capacity Price^{PkHrs} = [REDACTED]



SOURCE _____

44-2
1 P3

EXAMPLE B: CHANGE IN COSTS OF CURRENT SUPPLY, NO CHANGE IN STRUCTURE OF WHOLESALE MARKETS

4/14/99

CONTEXT: Costs paid by FPU for fuel rise to [REDACTED], energy-related charges for generation capacity rise to [REDACTED], and demand-related charges for capacity rise to [REDACTED]. Costs (Input Prices) and related parameters are as follows:

CONFIDENTIAL

HOURS				
Season	Peak Hours		Peak Hours	Seasonal Prob (p)
	Early	Late	Count	
Winter	6-12	13-19	14	[REDACTED]
Summer	11-12	13-21	11	[REDACTED]
November	9-12	13-23	15	[REDACTED]
Total:				[REDACTED]
Winter Late Probability		[REDACTED]		
November Early Probably		[REDACTED]		
PRICES FOR GENERATION AND TRANSMISSION*				
Energy Price (\$/MWh)				
	Fuel	[REDACTED]	Δ Price Forward	
	Generation Capacity	[REDACTED]	[REDACTED]	
	Environmental	[REDACTED]	[REDACTED]	
	Total	[REDACTED]	[REDACTED]	
Demand Charges (\$/kW-month)				
	Generation Capacity	[REDACTED]	[REDACTED]	
	Transmission Capacity	[REDACTED]	[REDACTED]	
	Total	[REDACTED]	[REDACTED]	
LOSS %, LOSS FACTORS, RESERVES, BILLING INTERVAL				
	Generation	[REDACTED]	Nominal	Effective
	Transmission	[REDACTED]	[REDACTED]	[REDACTED]
	Distribution	[REDACTED]	[REDACTED]	[REDACTED]
	Implicit Capacity Reserves	[REDACTED]	[REDACTED]	[REDACTED]
	Implicit Operating Reserves	[REDACTED]	[REDACTED]	[REDACTED]
	15-Minute Billing Interval Deration	[REDACTED]	[REDACTED]	[REDACTED]

Prices for Power Purchase (Week Day and Weekend Hours)

Energy Charge = [REDACTED]

Energy Price = [REDACTED]

For Week Day Non-Peak and Weekend Hours

$C.Charge_{Energy}^G = [REDACTED] \times [REDACTED] \times [REDACTED]$

Capacity Price^{Non-PkHrs} = [REDACTED]

Capacity Price^{Non-PkHrs} = [REDACTED]

For Week Day Peak Hours (shown for winter months)

$C.Charge_{Demand}^G = [REDACTED] \times [REDACTED] \times [REDACTED]$

$C.Charge_{Demand}^G = [REDACTED]$

$C.Charge_{Energy}^G = [REDACTED] \times [REDACTED] \times [REDACTED]$

44-2
1/PS

C.Charge^{Energy} = [Redacted]

4/14

C.Charge^T = [Redacted]

C.Charge^T = [Redacted]

Capacity Price^{PKHrs} = [Redacted]

CONFIDENTIAL

Capacity Price^{PKHrs} = [Redacted]

Week Day Purchase Prices (\$/MWh)							
Hour	Energy Price (\$/MWh)	Capacity Price (\$/MWh)			All-In Price (\$/MWh)		
		Winter	Summer	November	Winter	Summer	November

Winter: December - March
Summer: April - October

Capacity Prices Relevant to Week Days Only
Peak Period Hours in Bold

Weekend Day Purchase Prices (\$/MWh)			
Weekend Days	Winter	Summer	November
		[Redacted]	[Redacted]

Winter: December - March
Summer: April - October



SOURCE _____

44-2
1 pb

**EXAMPLE C: CHANGE IN SUPPLY (FPU ACQUIRES GENERATION);
RESTRUCTURED WHOLESALE MARKETS**

4/14/97

CONTEXT: Unbundled wholesale markets under an Southwest Power Pool-style RTO with hourly pricing are implemented in the Southeast, including Florida. FPU acquires generation with maximum capability of 70MW. FPU's supply is a combination of short-term hourly purchases for energy reserves (for load balancing) from the regional RTO coupled with its recently acquired internal supply.

CONFIDENTIAL

Market rules require FPU to carry, under contract, 20% capacity reserves during peak hours, or approximately 14MW. Buyer and Seller may agree to hourly prices (real-time or day-ahead) or fixed forward prices, the latter of which would involve an assessment of wholesale price risks and, in the case of Buyer, price hedging. Costs (Input Prices) and related parameters are as follows:

HOURS				
Season	Peak Hours		Peak Hours Count	Seasonal Prob (p)
	Early	Late		
Winter	6-12	13-19	14	N/A
Summer	11-12	13-21	11	N/A
November	9-12	13-23	15	N/A
				Total:
Winter Late Probability		[REDACTED]		
November Early Probably		[REDACTED]		
PRICES FOR GENERATION AND TRANSMISSION*				
Energy Price (\$/MWh)				
	Fuel	Various	Δ Price Forward	
Market Price of Operating Reserves		[REDACTED]		
Environmental		[REDACTED]		
Total		[REDACTED]		
Demand Charges (\$/kW-month)				
Generation Capacity		[REDACTED]		
Transmission Capacity		[REDACTED]		
Total		[REDACTED]		
LOSS %, LOSS FACTORS, RESERVES, BILLING INTERVAL				
		Nominal	Effective	
Generation		[REDACTED]		
Transmission		[REDACTED]		
Distribution		[REDACTED]		
Capacity Reserves		[REDACTED]		
Operating Reserves		[REDACTED]		
15-Minute Billing Interval Deration		[REDACTED]		

Prices for Power Purchase (Week Day and Weekend Hours)

Energy Charge = Various [REDACTED] (factor for distribution losses)

Energy Price = Various [REDACTED]

For Week Day Non-Peak and Weekend Hours

Operating Reserve Charge = [REDACTED]

Operating Reserve Price^{Non-Peak} [REDACTED] (factor for distribution losses)



44-2
1 p7

4/14

Capacity Price ^{Non-PkHrs} = [REDACTED]

For Week Day Peak Hours (shown for winter months)

Capacity Reserve Charge ^G_{Demand} = [REDACTED] (factor for interval deration)

Capacity Reserve Charge ^G_{Demand} = [REDACTED]

Operating Reserve Charge = [REDACTED]

CONFIDENTIAL

C. Charge ^T = [REDACTED] (factor for transmission losses)

C. Charge ^T = [REDACTED]

Charges for Reserves _{Gen} + Capacity _{Trans} = [REDACTED]

Reserve and Capacity Price ^{PkHrs} = [REDACTED]

Hour	Energy Price (\$/MWh)	Capacity Price (\$/MWh)			All-In Price (\$/MWh)		
		Winter	Summer	November	Winter	Summer	November
[REDACTED]	[REDACTED]	[REDACTED]	[REDACTED]	[REDACTED]	[REDACTED]	[REDACTED]	[REDACTED]
[REDACTED]	[REDACTED]	[REDACTED]	[REDACTED]	[REDACTED]	[REDACTED]	[REDACTED]	[REDACTED]
[REDACTED]	[REDACTED]	[REDACTED]	[REDACTED]	[REDACTED]	[REDACTED]	[REDACTED]	[REDACTED]
[REDACTED]	[REDACTED]	[REDACTED]	[REDACTED]	[REDACTED]	[REDACTED]	[REDACTED]	[REDACTED]
[REDACTED]	[REDACTED]	[REDACTED]	[REDACTED]	[REDACTED]	[REDACTED]	[REDACTED]	[REDACTED]
[REDACTED]	[REDACTED]	[REDACTED]	[REDACTED]	[REDACTED]	[REDACTED]	[REDACTED]	[REDACTED]
[REDACTED]	[REDACTED]	[REDACTED]	[REDACTED]	[REDACTED]	[REDACTED]	[REDACTED]	[REDACTED]
[REDACTED]	[REDACTED]	[REDACTED]	[REDACTED]	[REDACTED]	[REDACTED]	[REDACTED]	[REDACTED]
[REDACTED]	[REDACTED]	[REDACTED]	[REDACTED]	[REDACTED]	[REDACTED]	[REDACTED]	[REDACTED]
[REDACTED]	[REDACTED]	[REDACTED]	[REDACTED]	[REDACTED]	[REDACTED]	[REDACTED]	[REDACTED]
[REDACTED]	[REDACTED]	[REDACTED]	[REDACTED]	[REDACTED]	[REDACTED]	[REDACTED]	[REDACTED]
[REDACTED]	[REDACTED]	[REDACTED]	[REDACTED]	[REDACTED]	[REDACTED]	[REDACTED]	[REDACTED]
[REDACTED]	[REDACTED]	[REDACTED]	[REDACTED]	[REDACTED]	[REDACTED]	[REDACTED]	[REDACTED]
[REDACTED]	[REDACTED]	[REDACTED]	[REDACTED]	[REDACTED]	[REDACTED]	[REDACTED]	[REDACTED]
[REDACTED]	[REDACTED]	[REDACTED]	[REDACTED]	[REDACTED]	[REDACTED]	[REDACTED]	[REDACTED]
[REDACTED]	[REDACTED]	[REDACTED]	[REDACTED]	[REDACTED]	[REDACTED]	[REDACTED]	[REDACTED]
[REDACTED]	[REDACTED]	[REDACTED]	[REDACTED]	[REDACTED]	[REDACTED]	[REDACTED]	[REDACTED]
[REDACTED]	[REDACTED]	[REDACTED]	[REDACTED]	[REDACTED]	[REDACTED]	[REDACTED]	[REDACTED]
[REDACTED]	[REDACTED]	[REDACTED]	[REDACTED]	[REDACTED]	[REDACTED]	[REDACTED]	[REDACTED]
[REDACTED]	[REDACTED]	[REDACTED]	[REDACTED]	[REDACTED]	[REDACTED]	[REDACTED]	[REDACTED]
[REDACTED]	[REDACTED]	[REDACTED]	[REDACTED]	[REDACTED]	[REDACTED]	[REDACTED]	[REDACTED]
[REDACTED]	[REDACTED]	[REDACTED]	[REDACTED]	[REDACTED]	[REDACTED]	[REDACTED]	[REDACTED]
[REDACTED]	[REDACTED]	[REDACTED]	[REDACTED]	[REDACTED]	[REDACTED]	[REDACTED]	[REDACTED]
[REDACTED]	[REDACTED]	[REDACTED]	[REDACTED]	[REDACTED]	[REDACTED]	[REDACTED]	[REDACTED]
[REDACTED]	[REDACTED]	[REDACTED]	[REDACTED]	[REDACTED]	[REDACTED]	[REDACTED]	[REDACTED]
[REDACTED]	[REDACTED]	[REDACTED]	[REDACTED]	[REDACTED]	[REDACTED]	[REDACTED]	[REDACTED]
[REDACTED]	[REDACTED]	[REDACTED]	[REDACTED]	[REDACTED]	[REDACTED]	[REDACTED]	[REDACTED]
[REDACTED]	[REDACTED]	[REDACTED]	[REDACTED]	[REDACTED]	[REDACTED]	[REDACTED]	[REDACTED]

Winter: December - March
Summer: April - October

Capacity Prices Relevant to Week Days Only
Peak Period Hours in Bold

	Winter	Summer	November
Weekend Days	[REDACTED]	[REDACTED]	[REDACTED]

Winter: December - March
Summer: April - October

44-2
1 P8



SOURCE

CONFIDENTIAL

Cutshaw, Mark

From: Tull, Ray E. - Manager, Financial Planning & Rates [TullRE@jea.com]
Sent: Friday, August 02, 2013 5:39 PM
To: Householder, Jeff, Cutshaw, Mark
Subject: FW: FPU Cost of Service FY2013
Attachments: FPU Notice 2013.pdf

Florida Public Utilities Co.
Fuel Cost Recovery Clause
Dkt.# 140001-EI, ACN 14-027-4-2
TYE 2013

4/11/13

Title Email verifying Revised Rates

BTM
3/26/14

Gentlemen:

This is just to reconfirm that the new rates were approved by the JEA Board on June 13, 2013 to be effective October 1, 2013.

When I wrote the e-mail to Mark back in July I thought there was a subsequent notice requirement in addition to the attached earlier notice but the contract does not seem to contain such additional requirement. Maybe it was in one of the earlier contracts. However, I just wanted to reconfirm that the JEA Board did approve the rate schedule below to be effective October 1, 2013.

I hope you both are doing well.

Thanks,

Ray

Current Rate Information

Billing Period		Rates and Charges				
From:	To:	Demand (per kW/Month)	Other Energy (per kWh)	Fuel Rate (per kWh)*	Environmental Charge (per kWh)	Estimated \$/kWh
Current	9/30/2013					

Proposed Rate Information

Billing Period		Rates and Charges				
From:	To:	Demand (per kW/Month)	Other Energy (per kWh)	Fuel Rate (per kWh)*	Environmental Charge (per kWh)	Estimated \$/kWh
10/1/2013	9/30/2014					
10/1/2014						

43-1/3-5

43-1/34

*The Fuel Rate shall be the Retail Tariff Fuel Rate, as set by the Authority from time to time, where the amount listed is for illustrative purposes only.

SOURCE Req # 1

44-4. pl

Current Rate Information

CONFIDENTIAL

Billing Period		Rates and Charges				
From:	To:	Demand (per kW/Month)	Other Energy (per kWh)	Fuel Rate (per kWh)*	Environmental Charge (per kWh)	Estimated \$/kWh
Current	9/30/2013					

440

Proposed Rate Information

Billing Period		Rates and Charges				
From:	To:	Demand (per kW/Month)	Other Energy (per kWh)	Fuel Rate (per kWh)*	Environmental Charge (per kWh)	Estimated \$/kWh
10/1/2013	9/30/2014					
10/1/2014	Until Changed					

*The Fuel Rate shall be the Retail Tariff Fuel Rate, as set by the Authority from time to time, where the amount listed is for illustrative purposes only.

From: Cutshaw, Mark [mailto:mcutshaw@fpuc.com]
Sent: Wednesday, July 03, 2013 10:30 AM
To: Tull, Ray E. - Manager, Financial Planning & Rates
Cc: Crawford, Juli E. - Financial Analyst Financial Planning & Rates
Subject: RE: FPU Cost of Service FY2013

That is correct. Thanks for all you help in getting this completed. Have a good holiday.

P. Mark Cutshaw, General Manager
 Florida Public Utilities Company
 911 South 8th Street
 Fernandina Beach, Florida 32034
 (904)277-1957 office
 (904)753-1272 cell

From: Tull, Ray E. - Manager, Financial Planning & Rates [mailto:TullRE@fea.com]
Sent: Wednesday, July 03, 2013 10:14 AM
To: Cutshaw, Mark
Cc: Crawford, Juli E. - Financial Analyst Financial Planning & Rates
Subject: RE: FPU Cost of Service FY2013

Mark, I hope things are going well for you these days.
 Yes, the board id approve the rates as shown below to be effective October 1, 2013. I am planning to send the official notice in the next day or so. I believe that is a requirement in the contract. Right?

Ray

44-tp2

21 West Church Street
Jacksonville, Florida 32202-7139

CONFIDENTIAL

4/14/13

May 2, 2013



CERTIFIED MAIL, RETURN RECEIPT REQUESTED

Mr. Jeff Householder
President
Florida Public Utilities Company
P.O. Box 3395
West Palm Beach, FL 33402-3395

RE: NOTICE IN ACCORDANCE WITH JEA-FPUC
Amended and Restated Contract dated November 6, 2008

Dear Mr. Householder:

NOTICE IS HEREBY GIVEN THAT the JEA Board of Directors will [REDACTED] amended and Restated Contract dated November 6, 2008 (hereinafter "Contract") at the board meeting on June 18, 2013 starting at 9:30 am, or as soon thereafter as the matter will be heard. This notice is in accordance with Section 16 of the Contract. JEA Board will be acting to set updated rates to be effective October 1, 2013.

If any person with a disability requires reasonable accommodations to participate in the above hearing, please call (904) 665-6243 no later than three (3) days before the meeting.

If a person decides to appeal any decisions made by JEA with respect to any matter considered at the proceedings, for the purpose of such appeal, that person will need a record of the proceedings and for such purpose, that person may need to ensure that a verbatim record of the proceedings is made, which record includes the testimony and evidence upon which the appeal is to be based.

Sincerely,

Raymond E. Tull
JEA, Manager Financial Planning and Rates
21 West Church Street
Jacksonville FL 32202

cc: P. Mark Curshaw
Florida Public Utilities Company
911 South 8th Street
Fernandina Beach, Florida 32034

44-4 p4