

Vital Statistics - Tampa Electric



Tampa Electric has supplied the Tampa Bay area with electricity since 1899. Its West Central Florida service area covers 2,000 square miles, including all of Hillsborough County and parts of Polk, Pasco and Pinellas counties.

The company has 4,700 megawatts of generating capacity and over 725,000 residential, commercial and industrial customers that depend on Tampa Electric for reliable power and value-added energy services.

Service Area

Tampa Electric serves about 2,000 square miles in West Central Florida, including Hillsborough County and part of Polk, Pasco and Pinellas Counties, with an estimated population of over one million.

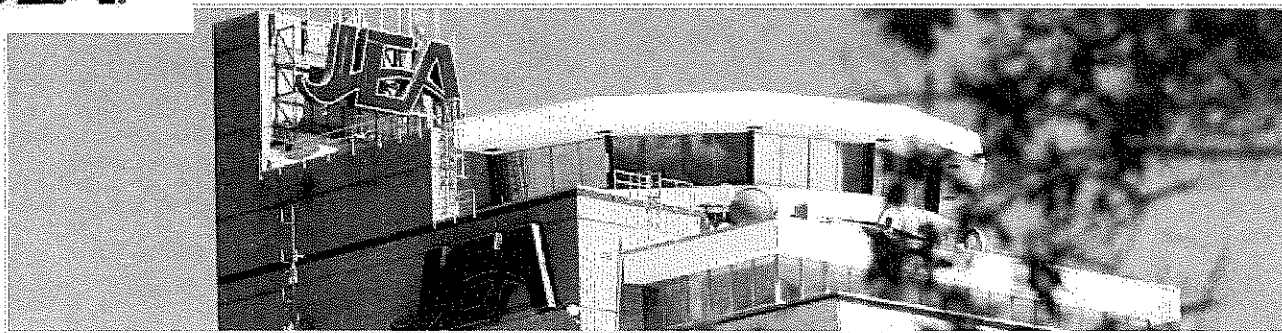
Power Stations

Tampa Electric has four electric generating plants in service, with December 2012 net generating capability of 4,668 MW. These plants, the fuel they use and their generating capabilities are listed below:

	<u>MW</u>
Bayside (natural gas)	2,083
Big Bend (coal)	1,572
Big Bend CT (natural gas/oil)	61
Polk Unit 1 (coal)	220
Polk Unit 2 - 5 (natural gas/oil)	732
System total	4,668

Demand

Tampa Electric's Peak demands occur in the winter because of electric heating. An all-time winter instantaneous peak load record of 4,760 MW was set on January 11, 2010. Summer peaks are brought on by air conditioning. An all-time summer instantaneous peak load record of 4,352 MW was set on



Company Info

Home ▶ About ▶ Company Info

JEA is located in Jacksonville, Florida, where we proudly serve an estimated 447,000 electric, 329,000 water and 254,000 sewer customers.

Northeast Florida's Not-For-Profit, Community-Owned Utility

JEA is not owned by investors. It was created by the City of Jacksonville to serve those who live here and in the surrounding communities. The sole purpose of our business is to ensure the electric, water and sewer demands of our customers are met, both today and for generations to come. Our goal is to provide reliable services at the best value to our customers while ensuring our areas' precious natural resources are protected.

Approximately 47 percent of JEA's electric revenues come from our 450,000 residential customers, 50 percent from 48,000 commercial and industrial customers and three percent from one wholesale customer. The commercial and industrial market segments also account for about one-third of the water and wastewater revenue.

Further details can be found by reading: Jacksonville City Charter, Article 21.

Corporate Citizenship Report

As a community-owned not-for-profit utility, our roots go deep in this community. As a company and as individuals, this is our home. Our customers are as essential to us as the services we provide are to them. Read about our commitment to our customers in our Corporate Citizenship Report.



Electric System

JEA owns and operates an Electric System with five generating plants, and all transmission and distribution facilities, including over 745 miles of transmission lines and more than 6,500 miles of distribution lines.

JEA is also a joint owner with Florid Power & Light Company (FPL) of a sixth power plant, the St. Johns River Power Park (SJRPP), which is operated by JEA. We also receive 9.6 megawatts of methane-generated power from Trail Ridge Landfill and 12.6-megawatts of energy from a 100-acre solar project on the Westside that contains 200,000 solar panels. In 2013, JEA generated 12.5 million megawatt hours of energy.

Water and Sewer Systems

JEA's Water System consists of 134 artesian wells that tap into the Floridan aquifer. Water is distributed through 37 water treatment plants and over 4,300 miles of water lines. In fiscal year 2015 JEA counted 329,000 water customers.

Related Links

- [Budget Process ▶](#)
- [By the Numbers ▶](#)
- [Ethics ▶](#)
- [Facility Safety ▶](#)
- [History ▶](#)
- [Master Plans ▶](#)
- [Mission ▶](#)
- [Water and Wastewater Facilities ▶](#)



Overview

Where We've Come From, Where We're Going

We're an investor-owned utility company spanning Northwest Florida and serving more than 447,000 customers. As the largest single taxpayer in the region, we take our community involvement seriously, donating to numerous charities and constantly working to improve our stewardship of the environment.

Who We Are

Gulf Power Company is an investor-owned electric utility, with all of its common stock owned by Atlanta-based **Southern Company** (<http://www.southerncompany.com/>).

How We Put Customers First

Our top priority is taking care of our customers. Warmth, hospitality, comfort, convenience and cost efficiency are things we want for our energy customers. High quality at a lower price is how we define value — and we're committed to keeping our prices low and our quality high — ensuring that you receive the best value for your money.

Where We Serve

Gulf Power's service territory spans the area from the Alabama border on the west to the Apalachicola River on the east; from the Alabama border on the north to the Gulf of Mexico on the south. Gulf Power serves approximately 447,000 customers in 71 towns and communities throughout Northwest Florida.

Environmental Stewardship

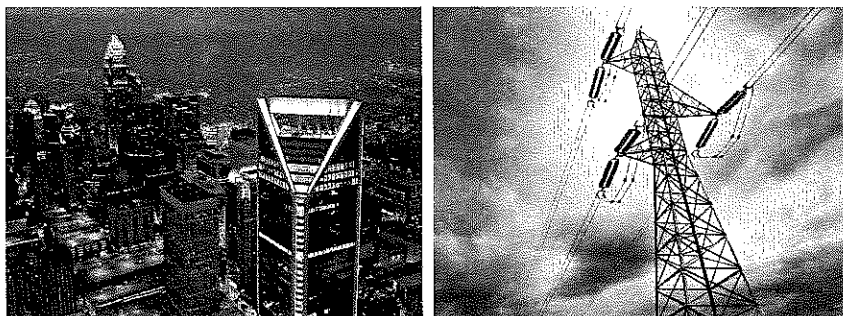
Gulf Power has a responsibility to provide reliable and affordable energy while minimizing any impact on the environment. To learn more about our efforts in this area, we encourage you to explore our comprehensive report regarding our commitment to **stewardship**.

Energy Conservation

Our employees work with customers to help them improve efficiency in

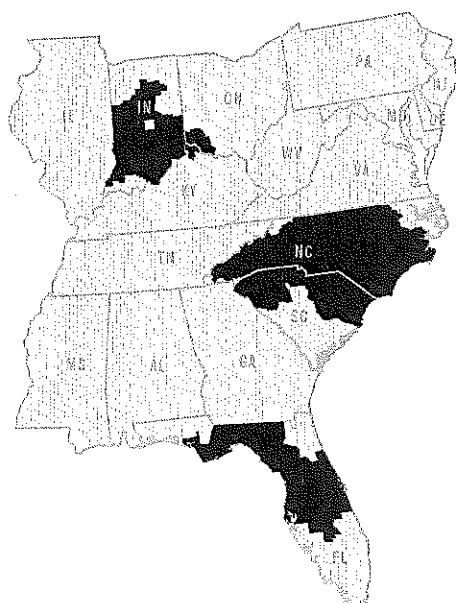
Fast Facts

Duke Energy Corporation



Duke Energy Corporation is an energy company headquartered in Charlotte, N.C. Its Regulated Utilities business unit serves 7.4 million retail electric customers in six states in the Southeast and Midwest regions of the United States, representing a population of approximately 24 million people. Duke Energy is a Fortune 125 company traded on the New York Stock Exchange under the symbol DUK. More information about the company is available at duke-energy.com.

Duke Energy Service Area – Regulated Utilities



Corporation*	
Market Cap (as of 2/16/16)	\$52.1 billion
2015 Operating Revenues	\$23.5 billion
Total Assets (as of 12/31/15)	\$121 billion
Employees (as of 12/31/15)	29,188
Total U.S. Generating Capacity (owned capacity)	52,697 megawatts (MW)
Regulated Utilities*	
States Served	NC, SC, IN, OH, KY, FL
Size of Service Area	95,000 square miles
Total Generation Capacity (owned capacity)	50,200 MW
Total Transmission Lines	32,300 miles
Total Distribution Lines	263,900 miles
Total Natural Gas Mains	7,200 miles
Total Natural Gas Service Lines	5,800 miles
Total Electric Retail Customers	7.4 million
North Carolina	3.3 million
South Carolina	730,000
Ohio/Kentucky	840,000
Indiana	810,000
Florida	1.7 million
Total Natural Gas Customers	525,000
Ohio	427,000
Kentucky	98,000

Duke Energy Regulated Utilities conducts operations primarily through Duke Energy Carolinas, Duke Energy Progress, Duke Energy Florida, Duke Energy Indiana, and the regulated transmission and distribution operations of Duke Energy Ohio.