

# BTC QUICK CHARGER SPECIFICATIONS



## EV Fast Charger - 50kW



BTCPower's DC Fast Charger can be configured as single charger, with either a CHAdeMO or SAE Combo connector, or a dual charger with both connectors integrated into a single unit, capable of charging a wide variety of EV's.

BTCPower offers one of the very few DC Fast Chargers that can operate via a 208/240VAC, 3-Phase as well as 480VAC, 3-Phase input for flexibility in implementation where modification of power requirements is costly.

### Key Features & Advantages

- o Commercial Grade
- o Built-in security and safety measures
- o Robust IGBT power technology
- o Outdoor-rated enclosure
- o Point-of-Sale (POS)\*
- o Wired and Wireless communication
- o Complete customization service available\*
- o Can be used as Parking Payment Terminal

\*Some items are optional

Model	EVFC-50-208	EVFC-50-480
Power Rating	50kW	50kW
Input Power	208VAC, 3-Phase	480VAC, 3-Phase
Input Power Breaker	200A	100A
Input Current	160A	70A
Required Power Capacity	58kVa	58kVa
Max. Output DC Current	112A	112A
Max. Output DC Voltage	50-500V	50-500V
Frequency	50/60Hz.	50/60Hz.
Efficiency Rating	>90%	>90%
Connectors	CHAdeMO, SAE Combo	
Network	Credit Cards, OCPP	
Ambient Condition	-20C to +50C, 95% Humidity, 6000ft. Altitude	
Dimensions	43"w, 72.75"h, 32.25"d	
Safety Compliance	ETL Listed for US and Canada; Complies with UL 2594, UL 2231-1, UL 2231-2, NEC Article 625, FCC Part 15, Class A, ADA Compliant	

All specifications are subject to change.



Model	EVFC-50-208	EVFC-50-480
Power Rating	50kW	50kW
Input Power	208VAC, 3-Phase	480VAC, 3-Phase
Input Power Breaker	200A	100A
Input Current	160A	70A
Required Power Capacity	58kVa	58kVa
Max. Output DC Current	112A	112A
Max. Output DC Voltage	50-500V	50-500V
Frequency	50/60Hz.	50/60Hz.
Efficiency Rating	>90%	>90%
Connectors	CHAdeMO, SAE Combo	
Network	Credit Cards, OCPP	
Ambient Condition	-20C to +50C, 95% Humidity, 6000ft. Altitude	
Dimensions	43"w, 72.75"h, 32.25"d	
Safety Compliance	ETL Listed for US and Canada; Complies with UL 2594, UL 2231-1, UL 2231-2, NEC Article 625, FCC Part 15, Class A, ADA Compliant	

**BTCPOWER™**  
www.btcpower.com

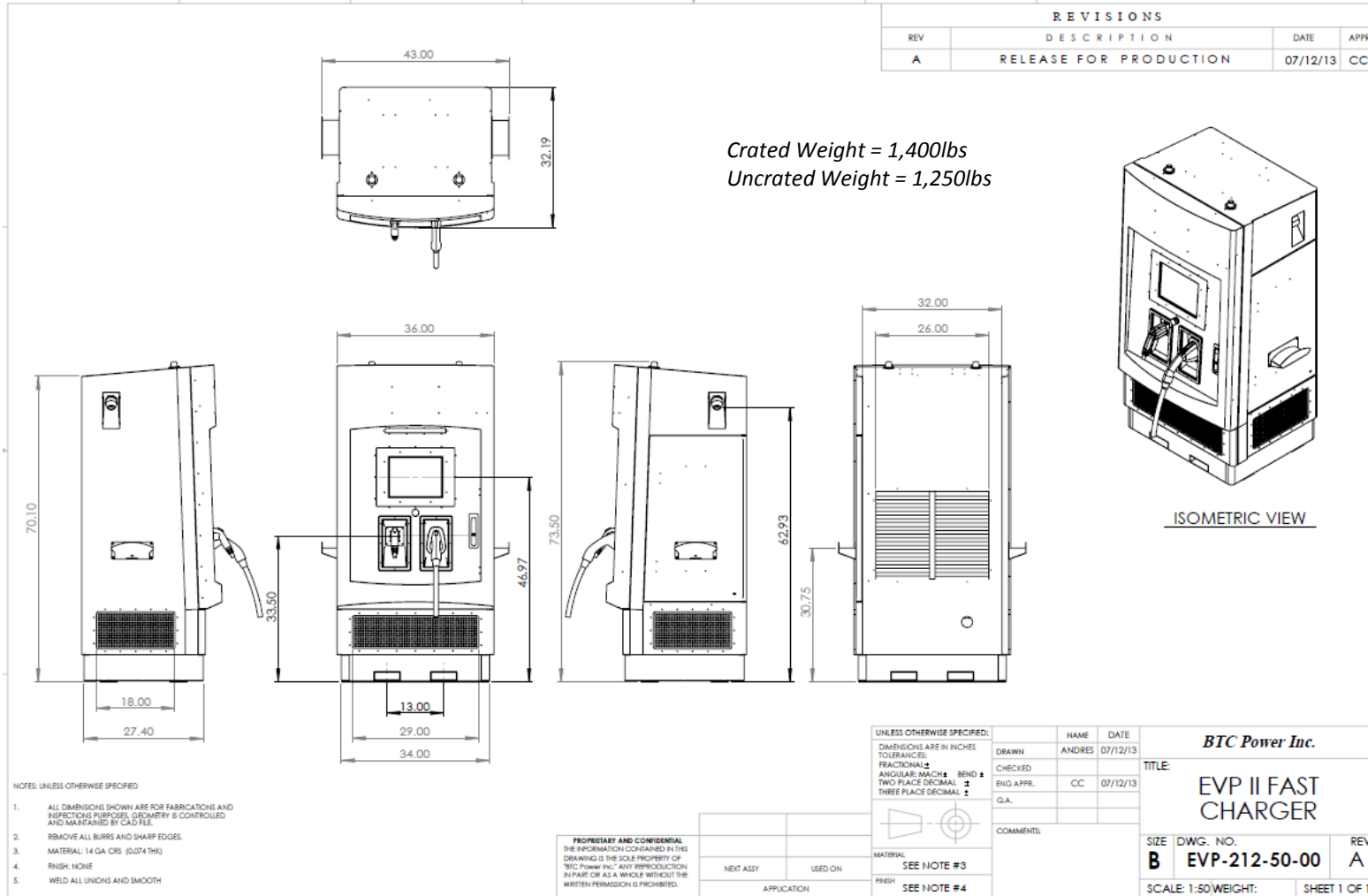
REFERENCE BTCPower 50KW\_208\_480\_7\_2015

1719 S Grand Ave. Santa Ana, CA 92705 Tel. 714.259.4888 Fax. 714.259.0840

# BTC QUICK CHARGER SPECIFICATIONS DIMENSIONS & WEIGHTS



Innovation  
that excites

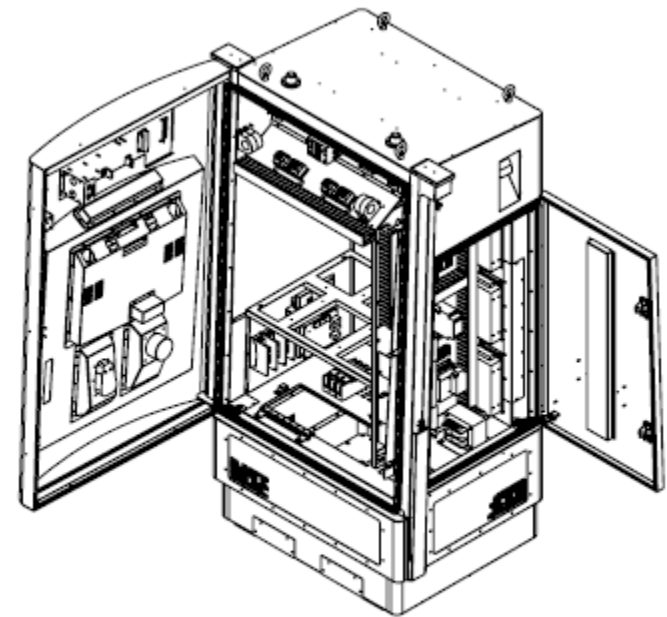
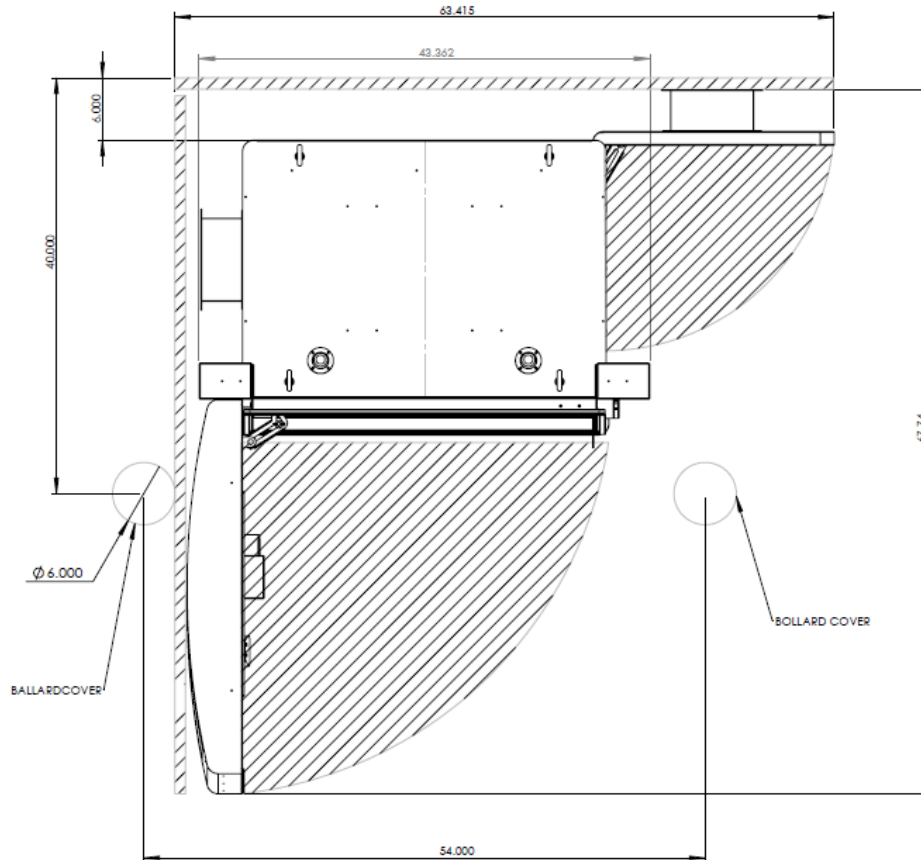


# BTC QUICK CHARGER SPECIFICATIONS BOLLARD PLACEMENT & SERVICE AREA



Innovation  
that excites

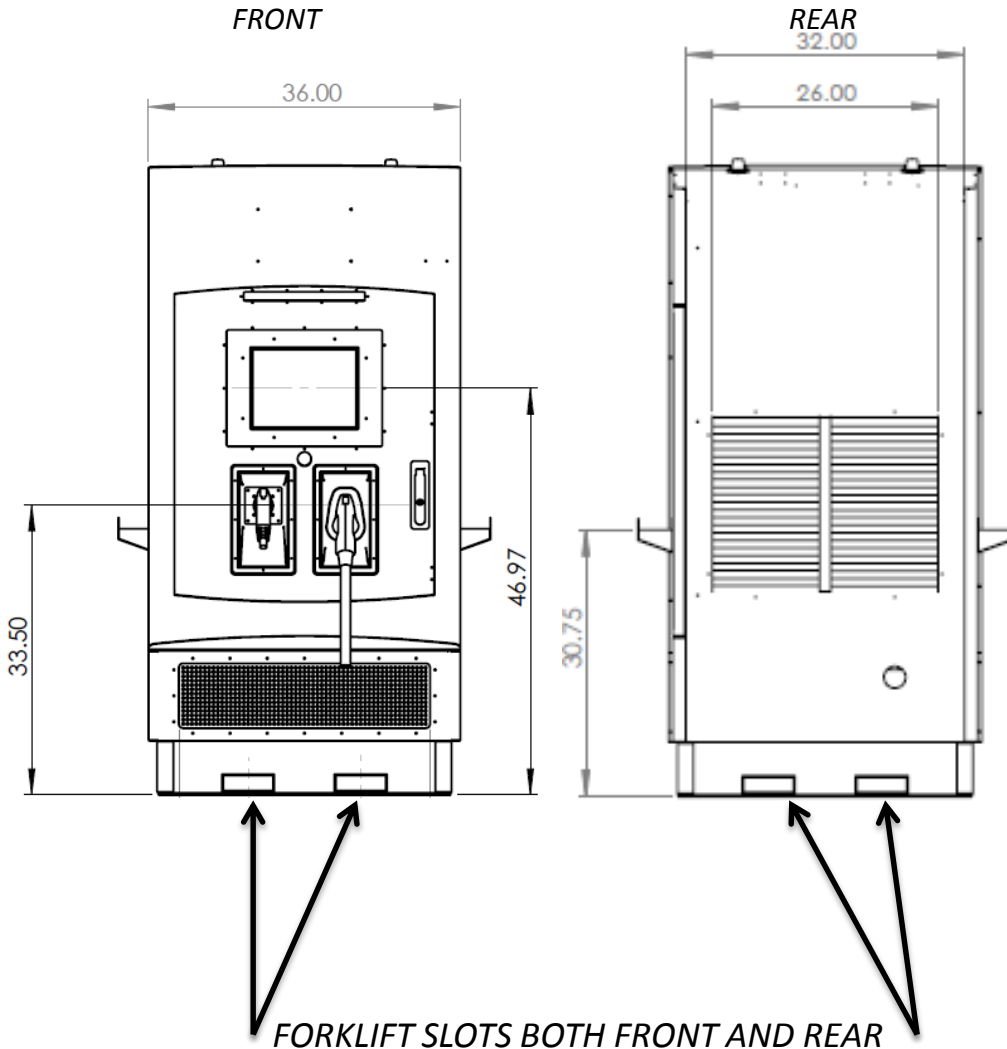
PLAN VIEW WITH OPEN DOOR'S



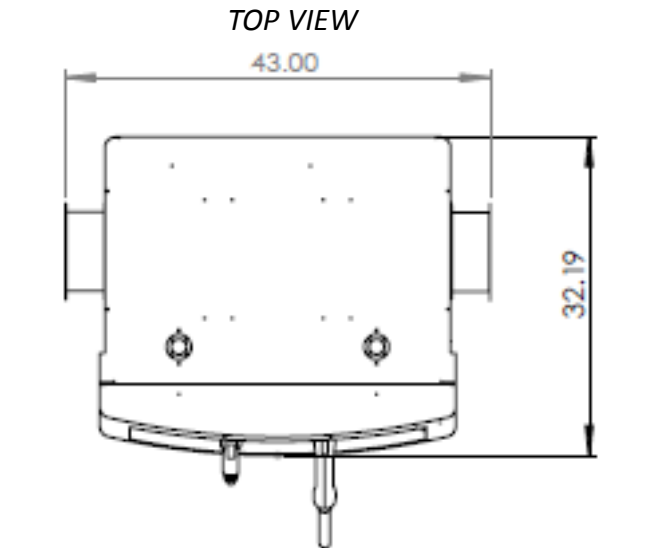
ISOMETRIC VEIV

# BTC QUICK CHARGER SPECIFICATIONS

## LIFTING POINTS

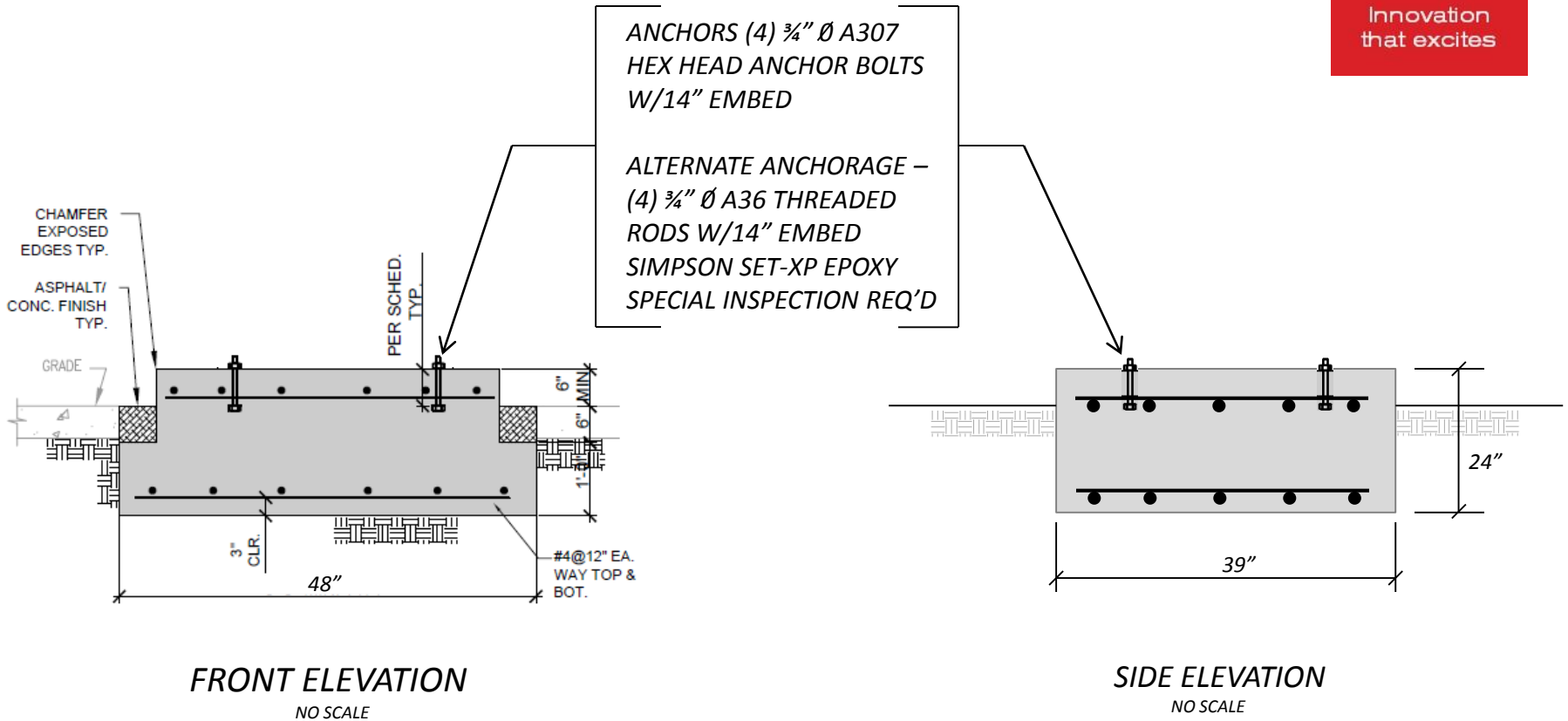


*BTC Quick Charger Weight = 1,250lbs*  
*BTC Crated weight = 1,400lbs*



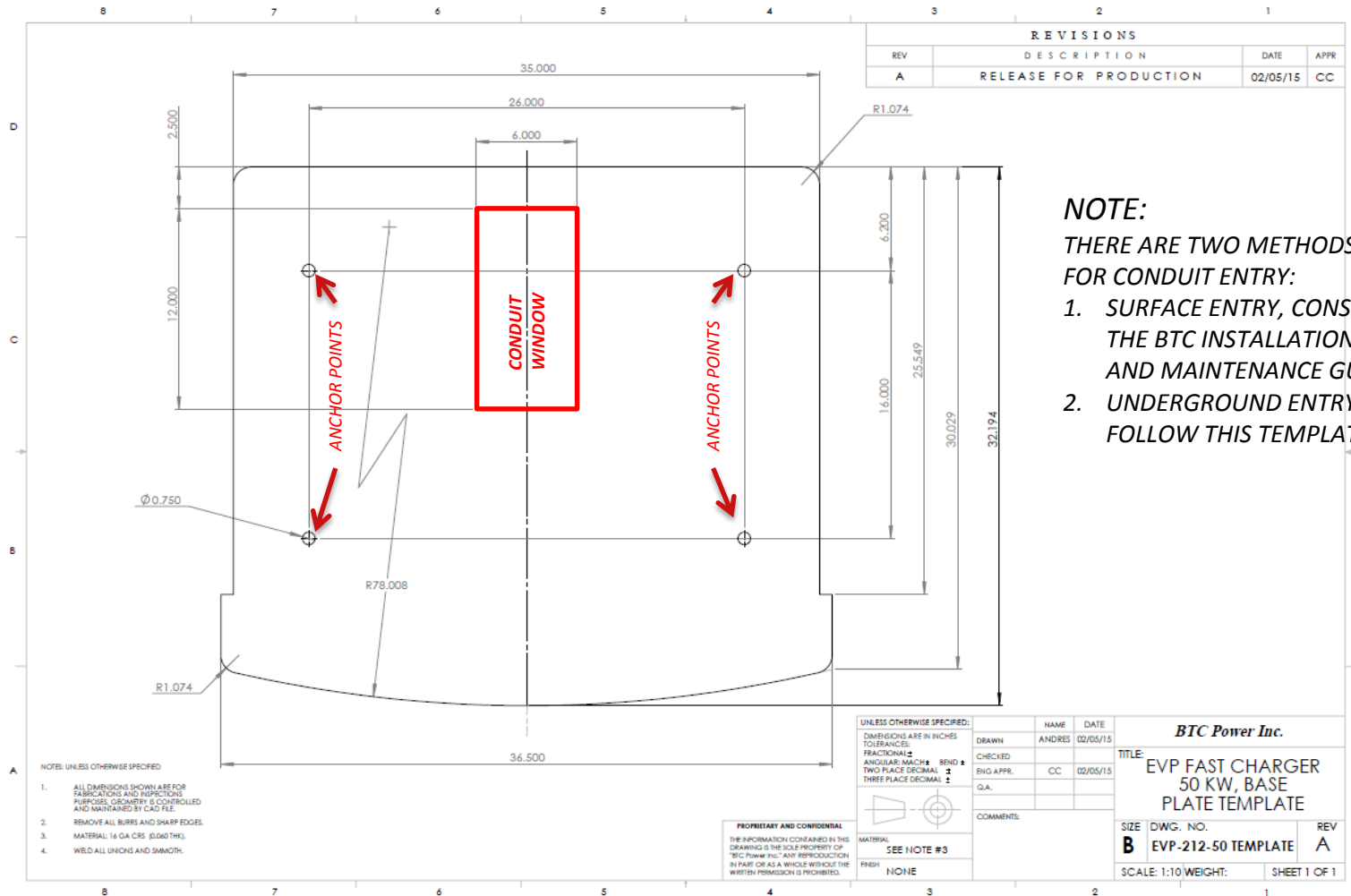
*LIFTING EYES*  
*THE QUICK CHARGER HAS PROVISIONS AT*  
*ALL 4 CONERS BY ADDING LIFTING EYES*  
*(FBO)*  
*MC MASTER PN 48443T150*

# CONCRETE FOUNDATION STRUCTURAL DETAIL



*For reference only, consult with local Structural Engineer for exact requirements*

# BTC QUICK CHARGER DIMENSIONED CONDUIT ENTRY AND ANCHORING POINTS



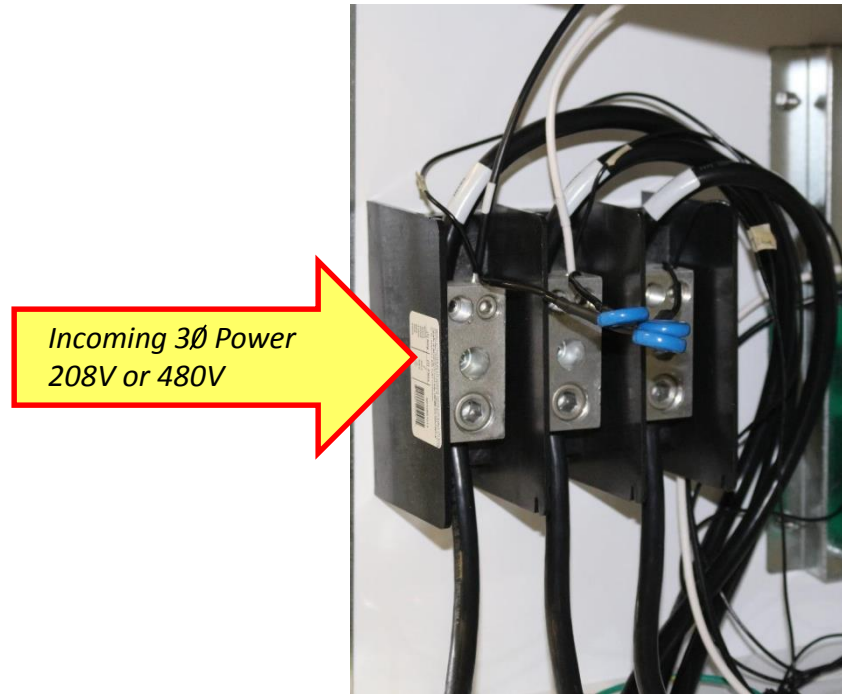
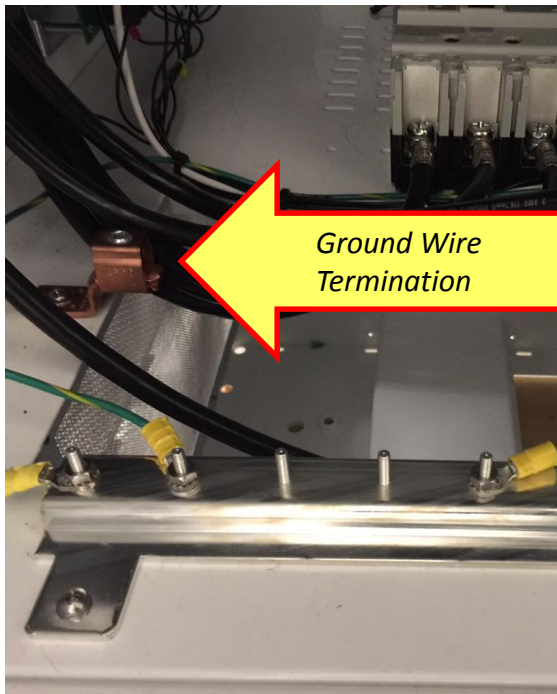
REFERENCE EVP-212-50 TEMPLATE



# BTC QUICK CHARGER WIRING TERMINATION



Innovation  
that excites



## Notes:

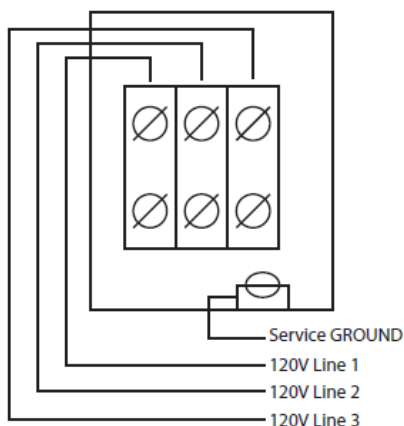
1. *The unit is not sensitive to Phase Rotation*
2. *Ensure Feeder Circuits comply with NEC voltage drop calculations*
3. *Prior to energizing always confirm the voltage rating of the unit provided matches the voltage rating of the unit requested*

# BTC QUICK CHARGER WIRING DIAGRAMS



## CONFIGURATION

Wiring Diagram



Terminal	Torq in-lbs
Ferraz 67013	275
Service Ground Lug	40

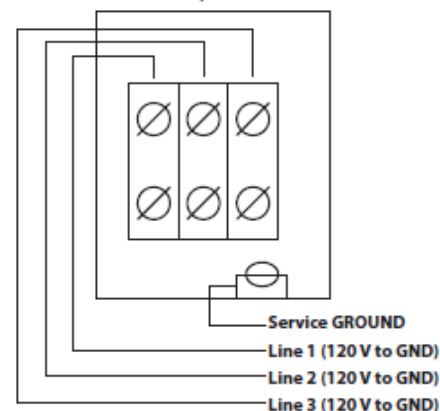
DO NOT connect to 3 phase 480VAC  
Use Copper Conductors Only

**208 VOLT, 3 PHASE, 3 WIRE**

## CONFIGURATION

Wiring Diagram

3 Phase, 480 VAC



Terminal	Torq in-lbs
Ferraz 67013	275
Service Ground Lug	40

Use Copper Conductors Only

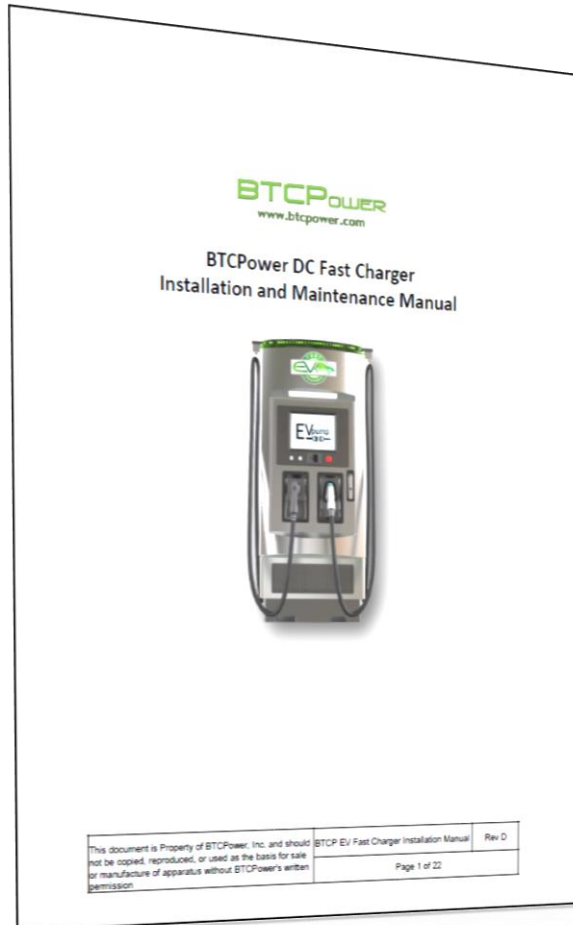
**480 VOLT, 3 PHASE, 3 WIRE**



# BTC QUICK CHARGER INSTALLATION AND MAINTENANCE MANUAL



Innovation  
that excites




This document is Property of BTCPower, Inc. and should not be copied, reproduced, or used as the basis for sale or manufacture of apparatus without BTCPower's written permission.	BTCP EV Fast Charger Installation Manual	Rev D
	Page 1 of 22	



*For equipment installation and maintenance procedures, please see charger installation and maintenance manual. For additional assistance please contact:*

**John Richardson**  
**Manager, EVSE Installations**  
**615-734-9024**  
[John.Richardson@nissan-usa.com](mailto:John.Richardson@nissan-usa.com)

# BTC QUICK CHARGER SPECIFICATIONS COMMISSIONING FORM



		DOCUMENT TITLE	
		BTCPower DC FC 50 KW Charger and Payment System Commissioning	
Start up and assistance support	1888-505-3171 Option 5		
Required parts	PART DESCRIPTION:		
Required tools	NA		
	Multi meter		
	RFID Card		
Document purpose	The site acceptance document is used to determine if there are any defects in the equipment to be installed due to transportation. It is also used to ensure proper electrical installation.		

Page 1 of 11

*For equipment commissioning procedures please see charger commissioning form. For additional assistance please contact:*

**Scott Moretz**  
**Construction Lead Evgo**  
**678-936-5065**  
[scott.moretz@nrg.com](mailto:scott.moretz@nrg.com)