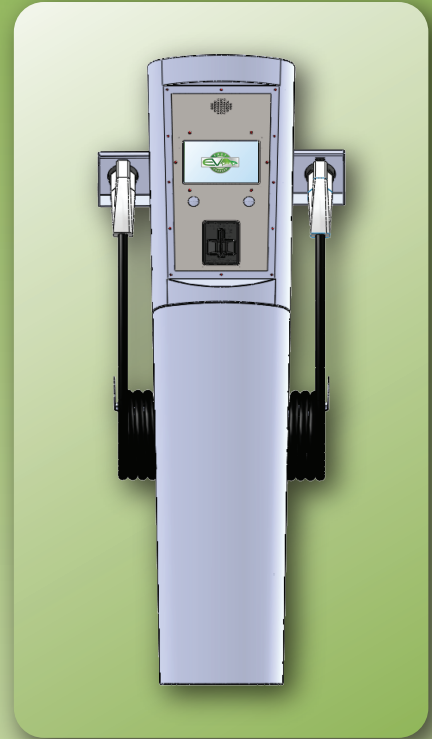




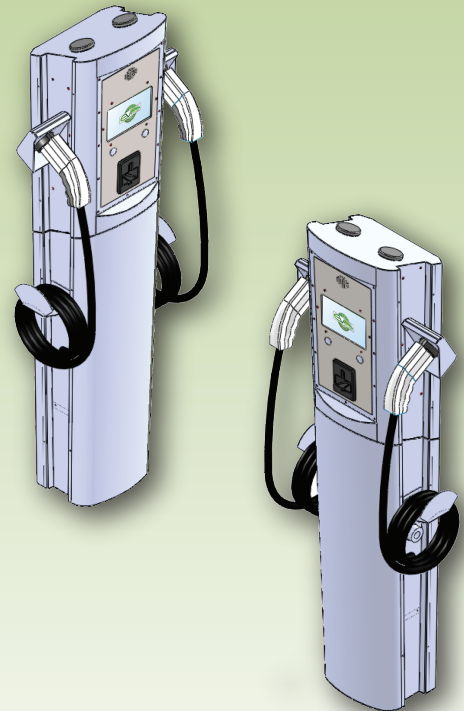
LEVEL 2 Dual Port Commercial EV Charging Station

Key Features and Advantages

- **Level 2 AC Dual Port.**
- **Easy Installation.**
- **Easy remote networked management featuring point and click graphical user interface.**
- **Data collection and reporting online for easy management and fleet tracking.**
- **SSL data protection encrypts all sensitive payment card information.**
- **Demand response control with integrated Zigbee, SEP 1.X and SEP 2.0 capable.**
- **LAN and Cellular communication.**
- **Revenue grade Energy Meter [optional].**
- **Payment options: All major credit cards, loyalty.**
- **Open ChargePoint Protocol Compliant (Version 1.5)**
- **Pay per time, per kWh, or any custom combinations.**
- **Display options: touch screen, full color, VF display.**
- **Gateway optional - communicate upto 15 non-gateway chargers.**
- **Complete customization services available including software and hardware.**



Also available in Wall-Mounts



Technical Specifications	
Input Voltage	208/240 VAC
Input Current	30A per side
Input Power Connections	Line1, Line2, Earth
Required Service Panel Breaker	2, 40A [one per side]
Electrical Output	30A per side
Output Charging Power	7.2 kW per side
Output Voltage	208/240 VAC
Output Charging Connector	SAE J1772, 18ft [coiled cable optional]
User Interface and Convenience	Optional displays and payment processing
Card Reader	NEMA 3 Magstrip Card Reader and/or Contactless Card Reader
Ground Fault Detection	20mA CCID with automatic retry at 15-min. intervals, totaling 3 tries.
Plug-Out Detection	Power terminated per SAE J1772 specifications
Power Measurement	Optional revenue grade energy metering available
Local Area Network	CAT 5/6, Wi-Fi b/g/n
Wide Area Network	TCP/IP, WiFi b/g/n, Zigbee, ICP IP/Internet, GPRS
Safety Compliance	ETL Listed for US and Canada; Complies with UL 2594, UL 2231-1, UL 2231-2
Surge Protection	6kV at 3000 VAC
EMC Compliance	FCC Part 15 Class A
Operating Temperature	-30°C to +55°C
Operating Humidity	90% RH, non-condensing
Terminal Block Temperature Rating	+100°C
Enclosure	NEMA 3R
Smart Grid	Utility Automated Demand Response, SEP 1.X and SEP 2.0