

**CLASS "A" OR "B"**

**WATER AND/OR WASTEWATER UTILITIES**  
(Gross Revenue of More Than \$200,000 Each)

**ANNUAL REPORT**

OF

SU615-19-AR  
Robert Hillman  
North Peninsula Utilities Corporation  
P.O. Box 2803  
Ormond Beach, FL 32175-2803

**OFFICIAL COPY**  
**Public Service Commission**  
**Do Not Remove From This Office**

---

Exact Legal Name of Respondent

249 S  
Certificate Number(s)

Submitted To The

**STATE OF FLORIDA**



2020 JUN - 1 AM 7:24

**PUBLIC SERVICE COMMISSION**

FOR THE

YEAR ENDED DECEMBER 31, 2019

## GENERAL INSTRUCTIONS

1. Prepare this report in conformity with the 1996 National Association of Regulatory Utility Commissioners Uniform System of Accounts for Water and/or Wastewater Utilities (USOA).
2. Interpret all accounting words and phrases in accordance with the USOA.
3. Complete each question fully and accurately, even if it has been answered in a previous annual report. Enter the word "None" where it truly and completely states the fact.
4. For any question, section, or page which is not applicable to the respondent, enter the words "Not Applicable." Do not omit any pages.
5. Where dates are called for, the month and day should be stated as well as the year.
6. All schedules requiring dollar entries should be rounded to the nearest dollar unless otherwise specifically indicated.
7. Complete this report by means which result in a permanent record, such as by computer or typewriter.
8. If there is not enough room on any schedule, an additional page or pages may be added, provided the format of the added schedule matches the format of the schedule with not enough room. Such a schedule should reference the appropriate schedules, state the name of the utility, and state the year of the report.
9. If it is necessary or desirable to insert additional statements for the purpose of further explanation of schedules, such statement should be made at the bottom of the page or an additional page inserted. Any additional pages should state the name of the utility, the year of the report, and reference the appropriate schedule.
10. For water and wastewater utilities with more than one rate group and/or system, water and wastewater pages should be completed for each rate group and/or system group. These pages should be grouped together and tabbed by rate group and/or system.
11. All other water and wastewater operations not regulated by the Commission and other regulated industries should be reported as "Other than Reporting Systems."
12. Financial information for multiple systems charging rates which are covered under the same tariff should be reported as one system. However, the engineering data must be reported by individual system.
13. For water and wastewater utilities with more than one system, one (1) copy of workpapers showing the consolidation of systems for the operating sections, should be filed with the annual report.
14. The report should be filled out in quadruplicate and the original and two copies returned by March 31, of the year following the date of the report. The report should be returned to:

**Florida Public Service Commission  
Division of Economic Regulation  
2540 Shumard Oak Boulevard  
Tallahassee, Florida 32399-0850**

The fourth copy should be retained by the utility.

## TABLE OF CONTENTS

SCHEDULE	PAGE	SCHEDULE	PAGE
<b>EXECUTIVE SUMMARY</b>			
Certification	E-1	Business Contracts with Officers, Directors and Affiliates	E-7
General Information	E-2	Affiliation of Officers and Directors	E-8
Directory of Personnel Who Contact the FPSC	E-3	Businesses which are a Byproduct, Coproduct or Joint Product Result of Providing Service	E-9
Company Profile	E-4	Business Transactions with Related Parties. Part I and II	E-10
Parent / Affiliate Organization Chart	E-5		
Compensation of Officers & Directors	E-6		
<b>FINANCIAL SECTION</b>			
Comparative Balance Sheet - Assets and Other Debits	F-1	Unamortized Debt Discount / Expense / Premium	F-13
Comparative Balance Sheet - Equity Capital and Liabilities	F-2	Extraordinary Property Losses	F-13
Comparative Operating Statement	F-3	Miscellaneous Deferred Debits	F-14
Year End Rate Base	F-4	Capital Stock	F-15
Year End Capital Structure	F-5	Bonds	F-15
Capital Structure Adjustments	F-6	Statement of Retained Earnings	F-16
Utility Plant	F-7	Advances from Associated Companies	F-17
Utility Plant Acquisition Adjustments	F-7	Other Long Term Debt	F-17
Accumulated Depreciation	F-8	Notes Payable	F-18
Accumulated Amortization	F-8	Accounts Payable to Associated Companies	F-18
Regulatory Commission Expense - Amortization of Rate Case Expense	F-9	Accrued Interest and Expense	F-19
Nonutility Property	F-9	Miscellaneous Current & Accrued Liabilities	F-20
Special Deposits	F-9	Advances for Construction	F-20
Investments and Special Funds	F-10	Other Deferred Credits	F-21
Accounts and Notes Receivable - Net	F-11	Contributions In Aid of Construction	F-22
Accounts Receivable from Associated Companies	F-12	Accumulated Amortization of CIAC	F-22
Notes Receivable from Associated Companies	F-12	Reconciliation of Reported Net Income with Taxable Income for Federal Income Taxes	F-23
Miscellaneous Current & Accrued Assets	F-12		

## TABLE OF CONTENTS

SCHEDULE	PAGE	SCHEDULE	PAGE
<b>WATER OPERATION SECTION</b>			
Water Listing of System Groups	W-1	CIAC Additions / Amortization	W-8
Year End Water Rate Base	W-2	Water Operating Revenue	W-9
Water Operating Statement	W-3	Water Utility Expense Accounts	W-10
Water Utility Plant Accounts	W-4	Pumping and Purchased Water Statistics, Source Supply	W-11
Basis for Water Depreciation Charges	W-5	Water Treatment Plant Information	W-12
Analysis of Entries in Water Depreciation Reserve	W-6	Calculation of ERCs	W-13
Contributions In Aid of Construction	W-7	Other Water System Information	W-14
<b>WASTEWATER OPERATION SECTION</b>			
Wastewater Listing of System Groups	S-1	Contributions In Aid of Construction	S-7
Year End Wastewater Rate Base	S-2	CIAC Additions / Amortization	S-8
Wastewater Operating Statement	S-3	Wastewater Operating Revenue	S-9
Wastewater Utility Plant Accounts	S-4	Wastewater Utility Expense Accounts	S-10
Basis for Wastewater Depreciation Charges	S-5	Calculation of ERCs	S-11
Analysis of Entries in Wastewater Depreciation Reserve	S-6	Wastewater Treatment Plant Information	S-12
		Other Wastewater System Information	S-13

# **EXECUTIVE SUMMARY**

UTILITY NAME: North Peninsula Utilities Corporation

**YEAR OF REPORT**  
December 31, 2019

**CERTIFICATION OF ANNUAL REPORT**

I HEREBY CERTIFY, to the best of my knowledge and belief:

YES NO

1. The utility is in substantial compliance with the Uniform System of Accounts prescribed by the Florida Public Service Commission.

YES NO

2. The utility is in substantial compliance with all applicable rules and orders of the Florida Public Service Commission.

YES NO

3. There have been no communications from regulatory agencies concerning noncompliance with, or deficiencies in, financial reporting practices that could have a material effect on the the financial statement of the utility.

YES NO

4. The annual report fairly represents the financial condition and results of operations of the respondent for the period presented and other information and statements presented in the the report as to the business affairs of the respondent are true, correct and complete for the period for which it represents.

Items Certified

1.	2.	3.	4.
X	X	X	X

  
\_\_\_\_\_  
(Signature of Chief Executive Officer of the utility) \*

1.	2.	3.	4.

\_\_\_\_\_  
(Signature of Chief Financial Officer of the utility) \*

\* Each of the four items must be certified YES or NO. Each item need not be certified by both officers. The items being certified by the officer should be indicated in the appropriate area to the left of the signature.

**NOTICE:** Section 837.06, Florida Statutes, provides that any person who knowingly makes a false statement in writing with the intent to mislead a public servant in the performance of his duty shall be guilty of a misdemeanor of the second degree.

ANNUAL REPORT OF

YEAR OF REPORT  
December 31, 2019

North Peninsula Utilities Corporation  
(Exact Name of Utility)

County: Volusia

List below the exact mailing address of the utility for which normal correspondence should be sent:

P.O. Box 2803  
Ormond Beach, FL 32175

Telephone: 386-677-7847

E Mail Address: developershw@gmail.com

WEB Site: None

Sunshine State One-Call of Florida, Inc. Member Number NP2138

Name and address of person to whom correspondence concerning this report should be addressed:

Robert Hillman  
P.O. Box 2803, Ormond Beach, FL 32175

Telephone: 386-677-7847

List below the address of where the utility's books and records are located:

115 E. Granada Blvd Suite #12  
Ormond Beach, FL 32176

Telephone: 386-677-5702

List below any groups auditing or reviewing the records and operations:

\_\_\_\_\_  
\_\_\_\_\_

Date of original organization of the utility: 1989

Check the appropriate business entity of the utility as filed with the Internal Revenue Service

Individual  Partnership  Sub S Corporation  1120 Corporation

List below every corporation or person owning or holding directly or indirectly 5% or more of the voting securities of the utility:

Name	Percent Ownership
1. <u>Robert Hillman</u>	<u>50%</u>
2. <u>Tyree Willson</u>	<u>50%</u>
3. _____	_____
4. _____	_____
5. _____	_____
6. _____	_____
7. _____	_____
8. _____	_____
9. _____	_____
10. _____	_____

**DIRECTORY OF PERSONNEL WHO CONTACT  
THE FLORIDA PUBLIC SERVICE COMMISSION**

NAME OF COMPANY REPRESENTATIVE (1)	TITLE OR POSITION (2)	ORGANIZATIONAL UNIT TITLE (3)	USUAL PURPOSE FOR CONTACT WITH FPSC
Bob Hillman	President	President	Inquiry
Tyree F. Wilson	Vice President	Vice President	Inquiry
Tara Hollis, CPA, MBA Willdan Financial Services	Consultant Regulatory	Contract Accountant	Forms and Filings
Mark Cadenhead, PE, MBA Cadenhead Envmtl EngServices, Inc.	Consultant Engineering	Utility Engineer	Plant Operations And Regulations

(1) Also list appropriate legal counsel, accountants and others who may not be on general payroll.  
 (2) Provide individual telephone numbers if the person is not normally reached at the company.  
 (3) Name of company employed by, if not on general payroll.



**COMPANY PROFILE**

Provide a brief narrative company profile which covers the following areas:

- A. Brief company history.
- B. Public services rendered.
- C. Major goals and objectives.
- D. Major operating divisions and functions.
- E. Current and projected growth patterns.
- F. Major transactions having a material effect on operations.

NPUC was formed in 1989 to purchase the assets of Seabridge Utilities in order to provide wastewater service to condo units in Ormond Beach, developed by Hillman/Wilson. The goal was to provide good compliant wastewater service at reasonable rates and expand service to others in need. Current growth patterns are slow to stable with continued work to meet the standards and regulations of the FLA. DEP.

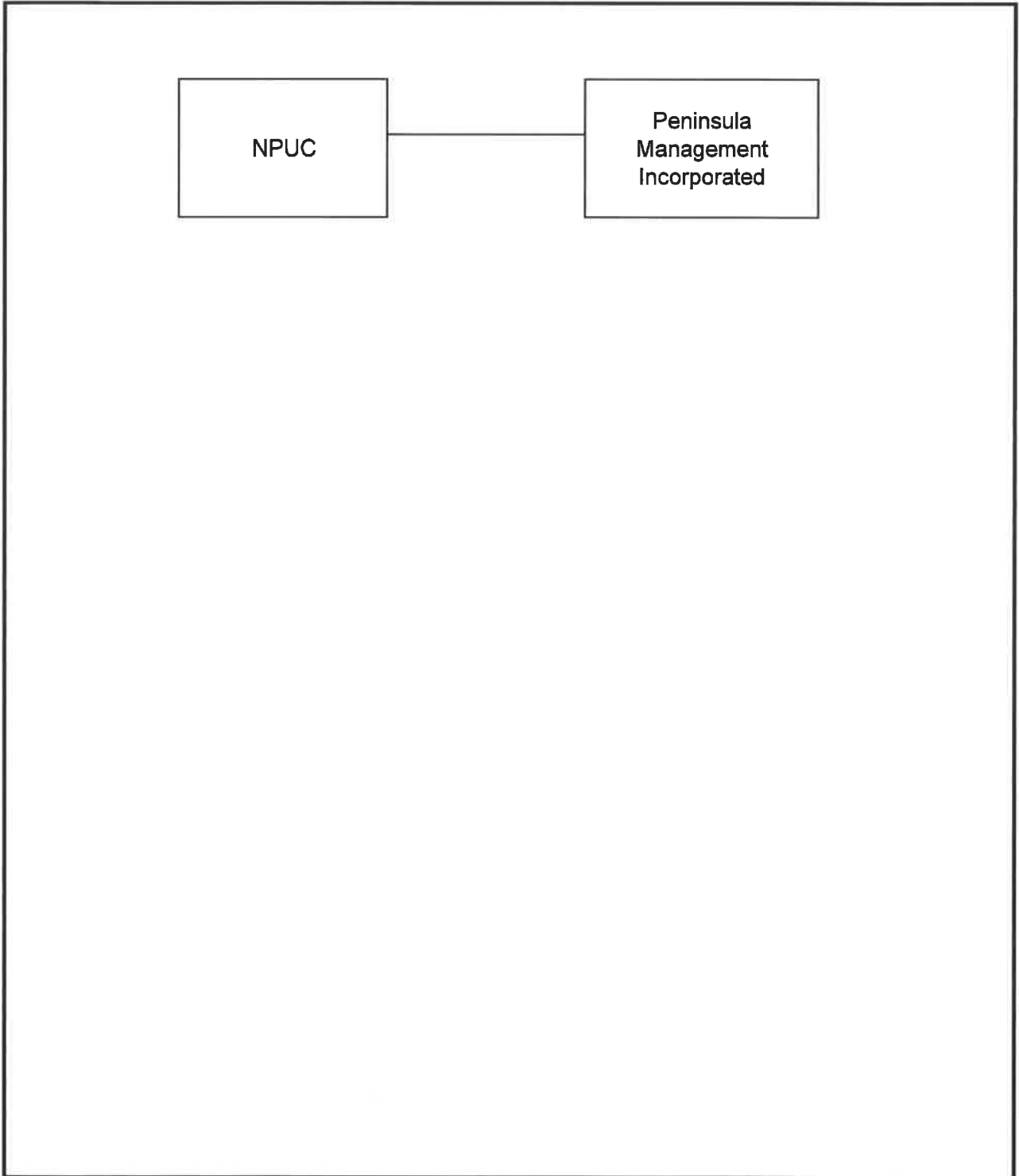
UTILITY NAME: North Peninsula Utilities Corporation

**YEAR OF REPORT**  
December 31, 2019

**PARENT / AFFILIATE ORGANIZATION CHART**

Current as of 12/31/19

Complete below an organizational chart that shows all parents, subsidiaries and affiliates of the utility.  
The chart must also show the relationship between the utility and affiliates listed on E-7, E-10(a) and E-10(b).



UTILITY NAME: North Peninsula Utilities Corporation

<b>YEAR OF REPORT</b> December 31, 2019
--

**COMPENSATION OF OFFICERS**

For each officer, list the time spent on respondent as an officer compared to time spent on total business activities and the compensation received as an officer from the respondent.			
NAME (a)	TITLE (b)	% OF TIME SPENT AS OFFICER OF THE UTILITY (c)	OFFICERS' COMPENSATION (d)
Bob Hillman	President	75-90	Direct Charge
Tyree Wilson	VP Operations	As needed	Direct Charge

**COMPENSATION OF DIRECTORS**

For each director, list the number of directors' meetings attended by each director and the compensation received as a director from the respondent.			
NAME (a)	TITLE (b)	NUMBER OF DIRECTORS' MEETINGS ATTENDED (c)	DIRECTORS' COMPENSATION (d)
Tyree Wilson	Dir	All	0
Bob Hillman	Dir	All	0



UTILITY NAME: North Peninsula Utilities Corporation

**YEAR OF REPORT**

December 31, 2019

**AFFILIATION OF OFFICERS AND DIRECTORS**

For each of the officials listed on page E-6, list the principal occupation or business affiliations or connections with any other business or financial organizations, firms, or partnerships. For purposes of this part, an official will be considered to have an affiliation with any business or financial organization, firm or partnership in which he is an officer, director, trustee, partner, or a person exercising similar functions.

NAME (a)	PRINCIPAL OCCUPATION OR BUSINESS AFFILIATION (b)	AFFILIATION OR CONNECTION (c)	NAME AND ADDRESS OF AFFILIATION OR CONNECTION (d)
None			









# **FINANCIAL SECTION**

**UTILITY NAME:** North Peninsula Utilities Corporation

**COMPARATIVE BALANCE SHEET  
ASSETS AND OTHER DEBITS**

ACCT. NO. (a)	ACCOUNT NAME (b)	REF. PAGE (c)	PREVIOUS YEAR (d)	CURRENT YEAR (e)
<b>UTILITY PLANT</b>				
101-106	Utility Plant	F-7	\$ 1,016,291	\$ 942,885
108-110	Less: Accumulated Depreciation and Amortization	F-8	928,432	744,555
Net Plant			\$ 87,859	\$ 198,330
114-115	Utility Plant Acquisition adjustment (Net)	F-7		
116 *	Other Utility Plant Adjustments			
Total Net Utility Plant			\$ 87,859	\$ 198,330
<b>OTHER PROPERTY AND INVESTMENTS</b>				
121	Nonutility Property	F-9	\$ 0	\$ 0
122	Less: Accumulated Depreciation and Amortization			
Net Nonutility Property			\$ 0	\$ 0
123	Investment in Associated Companies	F-10		
124	Utility Investments	F-10		
125	Other Investments	F-10		
126-127	Special Funds	F-10		
Total Other Property & Investments			\$ 0	\$ 0
<b>CURRENT AND ACCRUED ASSETS</b>				
131	Cash		\$ 3,874	\$ 5,056
132	Special Deposits	F-9	0	85
133	Other Special Deposits	F-9	0	0
134	Working Funds			
135	Temporary Cash Investments			
141-144	Accounts and Notes Receivable, Less Accumulated Provision for Uncollectible Accounts	F-11	29,587	27,906
145	Accounts Receivable from Associated Companies	F-12		
146	Notes Receivable from Associated Companies	F-12		
151-153	Material and Supplies			
161	Stores Expense			
162	Prepayments			
171	Accrued Interest and Dividends Receivable			
172 *	Rents Receivable			
173 *	Accrued Utility Revenues			
174	Miscellaneous Current and Accrued Assets	F-12		
Total Current and Accrued Assets			\$ 33,461	\$ 33,047

\* Not Applicable for Class B Utilities

UTILITY NAME: North Peninsula Utilities Corporation

<b>YEAR OF REPORT</b> December 31, 2019
--

**COMPARATIVE BALANCE SHEET  
ASSETS AND OTHER DEBITS**

ACCT. NO. (a)	ACCOUNT NAME (b)	REF. PAGE (c)	PREVIOUS YEAR (d)	CURRENT YEAR (e)
	DEFERRED DEBITS			
181	Unamortized Debt Discount & Expense	F-13	\$ _____	\$ _____
182	Extraordinary Property Losses	F-13	_____	_____
183	Preliminary Survey & Investigation Charges		_____	_____
184	Clearing Accounts		_____	_____
185 *	Temporary Facilities		_____	_____
186	Miscellaneous Deferred Debits	F-14	143,862	92,666
187 *	Research & Development Expenditures		_____	_____
190	Accumulated Deferred Income Taxes		_____	_____
	Total Deferred Debits		\$ 143,862	\$ 92,666
	TOTAL ASSETS AND OTHER DEBITS		\$ 265,182	\$ 324,043

\* Not Applicable for Class B Utilities

<p><b>NOTES TO THE BALANCE SHEET</b> The space below is provided for important notes regarding the balance sheet</p>
--

UTILITY NAME: North Peninsula Utilities Corporation

<b>YEAR OF REPORT</b> December 31, 2019
--

**COMPARATIVE BALANCE SHEET  
EQUITY CAPITAL AND LIABILITIES**

ACCT. NO. (a)	ACCOUNT NAME (b)	REF. PAGE (c)	PREVIOUS YEAR (d)	CURRENT YEAR (e)
<b>EQUITY CAPITAL</b>				
201	Common Stock Issued	F-15	\$ 100	\$ 100
204	Preferred Stock Issued	F-15	0	
202,205 *	Capital Stock Subscribed			
203,206 *	Capital Stock Liability for Conversion			
207 *	Premium on Capital Stock			
209 *	Reduction in Par or Stated Value of Capital Stock			
210 *	Gain on Resale or Cancellation of Reacquired Capital Stock			
211	Other Paid - In Capital		400	400
212	Discount On Capital Stock			
213	Capital Stock Expense			
214-215	Retained Earnings	F-16	(940,660)	(951,926)
216	Reacquired Capital Stock			
218	Proprietary Capital (Proprietorship and Partnership Only)			
Total Equity Capital			\$ (940,160)	\$ (951,426)
<b>LONG TERM DEBT</b>				
221	Bonds	F-15		0
222 *	Reacquired Bonds			
223	Advances from Associated Companies	F-17		0
224	Other Long Term Debt	F-17	1,021,458	1,001,825
Total Long Term Debt			\$ 1,021,458	\$ 1,001,825
<b>CURRENT AND ACCRUED LIABILITIES</b>				
231	Accounts Payable		32,051	39,949
232	Notes Payable	F-18	28,000	28,000
233	Accounts Payable to Associated Companies	F-18	109,219	194,487
234	Notes Payable to Associated Companies	F-18	0	0
235	Customer Deposits			
236	Accrued Taxes	W/S-3	13,877	10,492
237	Accrued Interest	F-19		
238	Accrued Dividends			
239	Matured Long Term Debt			
240	Matured Interest			
241	Miscellaneous Current & Accrued Liabilities	F-20	0	
Total Current & Accrued Liabilities			\$ 183,147	\$ 272,928

\* Not Applicable for Class B Utilities

UTILITY NAME: North Peninsula Utilities Corporation

<b>YEAR OF REPORT</b> December 31, 2019
--

**COMPARATIVE BALANCE SHEET  
EQUITY CAPITAL AND LIABILITIES**

ACCT. NO. (a)	ACCOUNT NAME (b)	REF. PAGE (c)	PREVIOUS YEAR (d)	CURRENT YEAR (e)
<b>DEFERRED CREDITS</b>				
251	Unamortized Premium On Debt	F-13	\$ _____	\$ _____
252	Advances For Construction	F-20	_____	_____
253	Other Deferred Credits	F-21	_____	_____
255	Accumulated Deferred Investment Tax Credits		_____	_____
Total Deferred Credits			\$ <u>0</u>	\$ <u>0</u>
<b>OPERATING RESERVES</b>				
261	Property Insurance Reserve		\$ _____	\$ _____
262	Injuries & Damages Reserve		_____	_____
263	Pensions and Benefits Reserve		_____	_____
265	Miscellaneous Operating Reserves		_____	_____
Total Operating Reserves			\$ <u>0</u>	\$ <u>0</u>
<b>CONTRIBUTIONS IN AID OF CONSTRUCTION</b>				
271	Contributions in Aid of Construction	F-22	\$ 641,756	\$ 641,756
272	Accumulated Amortization of Contributions in Aid of Construction	F-22	(641,019)	(641,040)
Total Net CIAC			\$ <u>737</u>	\$ <u>716</u>
<b>ACCUMULATED DEFERRED INCOME TAXES</b>				
281	Accumulated Deferred Income Taxes - Accelerated Depreciation		\$ _____	\$ _____
282	Accumulated Deferred Income Taxes - Liberalized Depreciation		_____	_____
283	Accumulated Deferred Income Taxes - Other		_____	_____
Total Accumulated Deferred Income Tax			\$ <u>0</u>	\$ <u>0</u>
<b>TOTAL EQUITY CAPITAL AND LIABILITIES</b>			\$ <u>265,182</u>	\$ <u>324,043</u>

UTILITY NAME: North Peninsula Utilities Corporation

**YEAR OF REPORT**

December 31, 2019

**COMPARATIVE OPERATING STATEMENT**

ACCT. NO. (a)	ACCOUNT NAME (b)	REF. PAGE (c)	PREVIOUS YEAR (d)	CURRENT YEAR * (e)
<b>UTILITY OPERATING INCOME</b>				
400	Operating Revenues	F-3(b)	\$ 246,160	\$ 246,345
469, 530	Less: Guaranteed Revenue and AFPI	F-3(b)	0	0
Net Operating Revenues			\$ 246,160	\$ 246,345
401	Operating Expenses	F-3(b)	\$ 238,554	\$ 224,859
403	Depreciation Expense:	F-3(b)	\$ 3,396	\$ 8,373
	Less: Amortization of CIAC	F-22	25	21
Net Depreciation Expense			\$ 3,371	\$ 8,352
406	Amortization of Utility Plant Acquisition Adjustment	F-3(b)		0
407	Amortization Expense (Other than CIAC)	F-3(b)		0
408	Taxes Other Than Income	W/S-3	19,410	15,969
409	Current Income Taxes	W/S-3		0
410.1	Deferred Federal Income Taxes	W/S-3		0
410.11	Deferred State Income Taxes	W/S-3		0
411.1	Provision for Deferred Income Taxes - Credit	W/S-3		0
412.1	Investment Tax Credits Deferred to Future Periods	W/S-3		0
412.11	Investment Tax Credits Restored to Operating Income	W/S-3		0
Utility Operating Expenses			\$ 261,335	\$ 249,180
Net Utility Operating Income			\$ (15,175)	\$ (2,835)
469, 530	Add Back: Guaranteed Revenue and AFPI	F-3(b)		0
413	Income From Utility Plant Leased to Others			0
414	Gains (losses) From Disposition of Utility Property			0
420	Allowance for Funds Used During Construction			0
Total Utility Operating Income [Enter here and on Page F-3(c)]			\$ (15,175)	\$ (2,835)

\* For each account, Column e should agree with Columns f, g and h on F-3(b)

UTILITY NAME: North Peninsula Utilities Corporation

<b>YEAR OF REPORT</b> December 31, 2019
--

**COMPARATIVE OPERATING STATEMENT (Cont'd)**

WATER SCHEDULE W-3 * (f)	WASTEWATER SCHEDULE S-3 * (g)	OTHER THAN REPORTING SYSTEMS (h)
\$ <u>0</u> <u>0</u>	\$ <u>246,345</u> <u>0</u>	\$ _____
\$ <u>0</u>	\$ <u>246,345</u>	\$ <u>0</u>
\$ <u>0</u>	\$ <u>224,859</u>	\$ _____
<u>0</u> <u>0</u>	<u>8,373</u> <u>21</u>	_____
\$ <u>0</u>	\$ <u>8,352</u>	\$ <u>0</u>
<u>0</u> <u>0</u> <u>0</u> <u>0</u> <u>0</u> <u>0</u> <u>0</u> <u>0</u> <u>0</u> <u>0</u>	<u>0</u> <u>0</u> <u>15,969</u> <u>0</u> <u>0</u> <u>0</u> <u>0</u> <u>0</u> <u>0</u> <u>0</u>	_____ _____ _____ _____ _____ _____ _____ _____ _____ _____
\$ <u>0</u>	\$ <u>249,180</u>	\$ <u>0</u>
\$ <u>0</u>	\$ <u>(2,835)</u>	\$ <u>0</u>
<u>0</u> <u>0</u> <u>0</u> <u>0</u>	<u>0</u> <u>0</u> <u>0</u> <u>0</u>	_____ _____ _____ _____
\$ <u>0</u>	\$ <u>(2,835)</u>	\$ <u>0</u>

\* Total of Schedules W-3 / S-3 for all rate groups.

UTILITY NAME: North Peninsula Utilities Corporation

<b>YEAR OF REPORT</b> December 31, 2019
--

**COMPARATIVE OPERATING STATEMENT (Cont'd)**

ACCT. NO. (a)	ACCOUNT NAME (b)	REF. PAGE (c)	PREVIOUS YEAR (d)	CURRENT YEAR (e)
Total Utility Operating Income [from page F-3(a)]			\$ <u>(15,175)</u>	\$ <u>(2,835)</u>
<b>OTHER INCOME AND DEDUCTIONS</b>				
415	Revenues-Merchandising, Jobbing, and Contract Deductions		\$ <u>0</u>	\$ _____
416	Costs & Expenses of Merchandising Jobbing, and Contract Work		_____	_____
419	Interest and Dividend Income		_____	_____
421	Nonutility Income		_____	_____
426	Miscellaneous Nonutility Expenses		_____	_____
Total Other Income and Deductions			\$ <u>0</u>	\$ <u>0</u>
<b>TAXES APPLICABLE TO OTHER INCOME</b>				
408.2	Taxes Other Than Income		\$ _____	\$ _____
409.2	Income Taxes		_____	_____
410.2	Provision for Deferred Income Taxes		_____	_____
411.2	Provision for Deferred Income Taxes - Credit		_____	_____
412.2	Investment Tax Credits - Net		_____	_____
412.3	Investment Tax Credits Restored to Operating Income		_____	_____
Total Taxes Applicable To Other Income			\$ <u>0</u>	\$ <u>0</u>
<b>INTEREST EXPENSE</b>				
427	Interest Expense	F-19	\$ <u>61,376</u>	\$ <u>69,311</u>
428	Amortization of Debt Discount & Expense	F-13	_____	_____
429	Amortization of Premium on Debt	F-13	_____	_____
Total Interest Expense			\$ <u>61,376</u>	\$ <u>69,311</u>
<b>EXTRAORDINARY ITEMS</b>				
433	Extraordinary Income		\$ _____	\$ _____
434	Extraordinary Deductions		_____	_____
409.3	Income Taxes, Extraordinary Items		_____	_____
Total Extraordinary Items			\$ <u>0</u>	\$ <u>0</u>
<b>NET INCOME</b>			<b>\$ <u>(76,551)</u></b>	<b>\$ <u>(72,146)</u></b>

Explain Extraordinary Income:

---



---



---



---



---



UTILITY NAME: North Peninsula Utilities Corporation

<b>YEAR OF REPORT</b> December 31, 2019
--

**SCHEDULE OF YEAR END RATE BASE**

ACCT. NO. (a)	ACCOUNT NAME (b)	REF. PAGE (c)	WATER UTILITY (d)	WASTEWATER UTILITY (e)
101	Utility Plant In Service	F-7	\$ 0	\$ 942,885
	Less:			
	Nonused and Useful Plant (1)			
108	Accumulated Depreciation	F-8	0	744,555
110	Accumulated Amortization	F-8	0	0
271	Contributions in Aid of Construction	F-22	0	641,756
252	Advances for Construction	F-20		
Subtotal			\$ 0	\$ (443,426)
272	Add: Accumulated Amortization of Contributions in Aid of Construction	F-22	0	641,040
Subtotal			\$ 0	\$ 197,614
114	Plus or Minus: Acquisition Adjustments (2)	F-7	0	0
115	Accumulated Amortization of Acquisition Adjustments (2)	F-7	0	0
	Working Capital Allowance (3)		0	28,107
	Other (Specify): _____ _____ _____			
RATE BASE			\$ 0	\$ 225,721
NET UTILITY OPERATING INCOME			\$ 0	\$ (2,835)
ACHIEVED RATE OF RETURN (Operating Income / Rate Base)			0.00%	-1.26%

**NOTES :**

- (1) Estimate based on the methodology used in the last rate proceeding.
- (2) Include only those Acquisition Adjustments that have been approved by the Commission.
- (3) Calculation consistent with last rate proceeding.  
In absence of a rate proceeding, Class A utilities will use the Balance Sheet Method and Class B Utilities will use the One-eighth Operating and Maintenance Expense Method.

**SCHEDULE OF CURRENT COST OF CAPITAL  
CONSISTENT WITH THE METHODOLOGY USED IN THE LAST RATE PROCEEDING (1)**

<b>CLASS OF CAPITAL (a)</b>	<b>DOLLAR AMOUNT (2) (b)</b>	<b>PERCENTAGE OF CAPITAL (c)</b>	<b>ACTUAL COST RATES (3) (d)</b>	<b>WEIGHTED COST (c x d) (e)</b>
	DETAIL NOT AVAILABLE			
Common Equity	\$ _____	0.00%	_____	0.00%
Preferred Stock	0	0.00%	_____	0.00%
Long Term Debt	_____	0.00%	_____	0.00%
Customer Deposits	_____	0.00%	_____	0.00%
Tax Credits - Zero Cost	0	0.00%	_____	0.00%
Tax Credits - Weighted Cost	0	0.00%	_____	0.00%
Deferred Income Taxes	0	0.00%	_____	0.00%
Other (Explain)	0	0.00%	_____	0.00%
	0	0.00%	_____	0.00%
<b>Total</b>	<b>\$ 0</b>	<b>0.00%</b>		<b>0.00%</b>

(1) If the utility's capital structure is not used, explain which capital structure is used.

\_\_\_\_\_

\_\_\_\_\_

(2) Should equal amounts on Schedule F-6, Column (g).

(3) Mid-point of the last authorized Return On Equity or current leverage formula if none has been established.

Must be calculated using the same methodology used in the last rate proceeding using current annual report year end amounts and cost rates.

**APPROVED RETURN ON EQUITY**

Current Commission Return on Equity:	<u>10.55%</u>
Commission order approving Return on Equity:	<u>ORDER NO. PSC-2019-0461-PAA-SU</u>

**APPROVED AFUDC RATE**

COMPLETION ONLY REQUIRED IF AFUDC WAS CHARGED DURING YEAR

Current Commission Approved AFUDC rate:	<u>N/A</u>
Commission order approving AFUDC rate:	<u>N/A</u>

If any utility capitalized any charge in lieu of AFUDC (such as interest only), state the basis of the charge, an explanation as to why AFUDC was not charged and the percentage capitalized.

**UTILITY NAME:** North Peninsula Utilities Corporation

**SCHEDULE OF CAPITAL STRUCTURE ADJUSTMENTS  
CONSISTENT WITH THE METHODOLOGY USED IN THE LAST RATE PROCEEDING**

<b>CLASS OF CAPITAL (a)</b>	<b>PER BOOK BALANCE (b)</b>	<b>NON-UTILITY ADJUSTMENTS (c)</b>	<b>NON-JURISDICTIONAL ADJUSTMENTS (d)</b>	<b>OTHER (1) ADJUSTMENTS SPECIFIC (e)</b>	<b>OTHER (1) ADJUSTMENTS PRO RATA (f)</b>	<b>CAPITAL STRUCTURE (g)</b>
Common Equity	\$ _____	_____	_____	_____	_____	\$ _____
Preferred Stock	_____	_____	_____	_____	_____	_____
Long Term Debt	_____	_____	_____	_____	_____	_____
Customer Deposits	_____	_____	_____	_____	_____	_____
Tax Credits - Zero Cost	_____	_____	_____	_____	_____	_____
Tax Credits - Weighted Cost	_____	_____	_____	_____	_____	_____
Deferred Inc. Taxes	_____	_____	_____	_____	_____	_____
Other (Explain)	_____	_____	_____	_____	_____	_____
<b>Total</b>	\$ _____	\$ _____	\$ _____	\$ _____	\$ _____	\$ _____

(1) Explain below all adjustments made in Columns (e) and (f):

NONE

\_\_\_\_\_

\_\_\_\_\_

\_\_\_\_\_

\_\_\_\_\_

\_\_\_\_\_

\_\_\_\_\_

\_\_\_\_\_

\_\_\_\_\_

\_\_\_\_\_

\_\_\_\_\_

UTILITY NAME: North Peninsula Utilities Corporation

**UTILITY PLANT  
ACCOUNTS 101 - 106**

ACCT. NO. (a)	DESCRIPTION (b)	WATER (c)	WASTEWATER (d)	OTHER THAN REPORTING SYSTEMS (e)	TOTAL (f)
101	Plant Accounts: Utility Plant In Service	\$ 0	\$ 942,885	\$	\$ 942,885
102	Utility Plant Leased to Other				0
103	Property Held for Future Use				0
104	Utility Plant Purchased or Sold				0
105	Construction Work in Progress				0
106	Completed Construction Not Classified				0
	<b>Total Utility Plant</b>	<b>\$ 0</b>	<b>\$ 942,885</b>	<b>\$ 0</b>	<b>\$ 942,885</b>

**UTILITY PLANT ACQUISITION ADJUSTMENTS  
ACCOUNTS 114 AND 115**

Report each acquisition adjustment and related accumulated amortization separately.  
For any acquisition adjustments approved by the Commission, include the Order Number.

ACCT. NO. (a)	DESCRIPTION (b)	WATER (c)	WASTEWATER (d)	OTHER THAN REPORTING SYSTEMS (e)	TOTAL (f)
114	Acquisition Adjustment	\$	\$	\$	\$ 0
					0
					0
					0
					0
	<b>Total Plant Acquisition Adjustments</b>	<b>\$ 0</b>	<b>\$ 0</b>	<b>\$ 0</b>	<b>\$ 0</b>
115	Accumulated Amortization	\$	\$	\$	\$ 0
					0
					0
					0
					0
	<b>Total Accumulated Amortization</b>	<b>\$ 0</b>	<b>\$ 0</b>	<b>\$ 0</b>	<b>\$ 0</b>
	<b>Net Acquisition Adjustments</b>	<b>\$ 0</b>	<b>\$ 0</b>	<b>\$ 0</b>	<b>\$ 0</b>

UTILITY NAME: North Peninsula Utilities Corporation

<b>YEAR OF REPORT</b> December 31, 2019
--

**ACCUMULATED DEPRECIATION ( ACCT. 108 ) AND AMORTIZATION (ACCT. 110)**

DESCRIPTION (a)	WATER (b)	WASTEWATER (c)	OTHER THAN REPORTING SYSTEMS (d)	TOTAL (e)
<b>ACCUMULATED DEPRECIATION</b>				
<b>Account 108</b>				
Balance first of year	\$ 0	\$ 928,432	\$	\$ 928,432
Credit during year:				
Accruals charged to:				
Account 108.1 (1)	\$ 0	\$ 8,373	\$	\$ 8,373
Account 108.2 (2)				0
Account 108.3 (2)				0
Other Accounts (specify):				0
				0
				0
Salvage				0
Other Credits (Specify):				0
				0
<b>Total Credits</b>	\$ 0	\$ 8,373	\$ 0	\$ 8,373
Debits during year:				
Book cost of plant retired		192,250		192,250
Cost of Removal		0		0
Other Debits (specify):				0
				0
<b>Total Debits</b>	\$ 0	\$ 192,250	\$ 0	\$ 192,250
<b>Balance end of year</b>	\$ 0	\$ 744,555	\$ 0	\$ 744,555
<b>ACCUMULATED AMORTIZATION</b>				
<b>Account 110</b>				
Balance first of year	\$	\$	\$	\$ 0
Credit during year:				
Accruals charged to:				
Account 110.2 (3)	\$	\$	\$	\$ 0
Other Accounts (specify):				0
				0
<b>Total credits</b>	\$ 0	\$ 0	\$ 0	\$ 0
Debits during year:				
Book cost of plant retired				0
Other debits (specify):				0
				0
<b>Total Debits</b>	\$ 0	\$ 0	\$ 0	\$ 0
<b>Balance end of year</b>	\$ 0	\$ 0	\$ 0	\$ 0

- (1) Account 108 for Class B utilities.
- (2) Not applicable for Class B utilities.
- (3) Account 110 for Class B utilities.

UTILITY NAME: North Peninsula Utilities Corporation

<b>YEAR OF REPORT</b> December 31, 2019
--

**REGULATORY COMMISSION EXPENSE  
AMORTIZATION OF RATE CASE EXPENSE (ACCOUNTS 666 AND 766)**

DESCRIPTION OF CASE (DOCKET NO.) (a)	EXPENSE INCURRED DURING YEAR (b)	CHARGED OFF DURING YEAR	
		ACCT. (d)	AMOUNT (e)
N/A	\$ _____	_____	\$ _____
_____	_____	_____	_____
_____	_____	_____	_____
Total	\$ <u>0</u>		\$ <u>0</u>

**NONUTILITY PROPERTY (ACCOUNT 121)**

Report separately each item of property with a book cost of \$25,000 or more included in Account 121.

Other Items may be grouped by classes of property.

DESCRIPTION (a)	BEGINNING YEAR (b)	ADDITIONS (c)	REDUCTIONS (d)	ENDING YEAR BALANCE (e)
N/A	\$ _____	\$ _____	\$ _____	\$ _____ 0
_____	_____	_____	_____	_____ 0
_____	_____	_____	_____	_____ 0
_____	_____	_____	_____	_____ 0
Total Nonutility Property	\$ <u>0</u>	\$ <u>0</u>	\$ <u>0</u>	\$ <u>0</u>

**SPECIAL DEPOSITS ( ACCOUNTS 132 AND 133)**

Report hereunder all special deposits carried in Accounts 132 and 133.

DESCRIPTION OF SPECIAL DEPOSITS (a)	YEAR END BOOK COST (b)
SPECIAL DEPOSITS (Account 132): N/A	\$ _____
_____	_____
_____	_____
Total Special Deposits	\$ <u>0</u>
OTHER SPECIAL DEPOSITS (Account 133):	\$ _____
_____	_____
_____	_____
Total Other Special Deposits	\$ <u>0</u>

UTILITY NAME: North Peninsula Utilities Corporation

<b>YEAR OF REPORT</b> December 31, 2019
--

**INVESTMENTS AND SPECIAL FUNDS**  
**ACCOUNTS 123 - 127**

Report hereunder all investments and special funds carried in Accounts 123 through 127.

DESCRIPTION OF SECURITY OR SPECIAL FUND (a)	FACE OR PAR VALUE (b)	YEAR END BOOK COST (c)
INVESTMENT IN ASSOCIATED COMPANIES (Account 123): N/A _____ _____ _____ _____ _____	\$ _____ _____ _____ _____ _____	\$ _____ _____ _____ _____ _____
Total Investment in Associated Companies		\$ <u>0</u>
UTILITY INVESTMENTS (Account 124): N/A _____ _____ _____ _____ _____	\$ _____ _____ _____ _____ _____	\$ _____ _____ _____ _____ _____
Total Utility Investment		\$ <u>0</u>
OTHER INVESTMENTS (Account 125): N/A _____ _____ _____ _____ _____	\$ _____ _____ _____ _____ _____	\$ _____ _____ _____ _____ _____
Total Other Investment		\$ <u>0</u>
SPECIAL FUNDS (Class A Utilities: Accounts 126 and 127; Class B Utilities: Account 127): N/A _____ _____ _____ _____ _____	\$ _____ _____ _____ _____ _____	\$ _____ _____ _____ _____ _____
Total Special Funds		\$ <u>0</u>

UTILITY NAME: North Peninsula Utilities Corporation

<b>YEAR OF REPORT</b> December 31, 2019
--

**ACCOUNTS AND NOTES RECEIVABLE - NET**  
**ACCOUNTS 141 - 144**

Report hereunder all accounts and notes receivable included in Accounts 141, 142, and 144. Amounts included in  
Amounts included in Accounts 142 and 144 should be listed individually.

DESCRIPTION (a)		TOTAL (b)
CUSTOMER ACCOUNTS RECEIVABLE (Account 141):		
Manual A/R Balance	\$ 27,906	
_____	_____	
_____	_____	
Total Customer Accounts Receivable		\$ 27,906
OTHER ACCOUNTS RECEIVABLE (Account 142):		
_____	\$ _____	
_____	_____	
_____	_____	
Total Other Accounts Receivable		\$ 0
NOTES RECEIVABLE (Account 144):		
_____	\$ _____	
_____	_____	
_____	_____	
Total Notes Receivable		\$ 0
Total Accounts and Notes Receivable		\$ 27,906
ACCUMULATED PROVISION FOR UNCOLLECTIBLE ACCOUNTS (Account 143)		
Balance first of year	\$ _____	
Add: Provision for uncollectibles for current year	\$ _____	
Collection of accounts previously written off	_____	
Utility Accounts	_____	
Others	_____	
_____	_____	
Total Additions		\$ 0
Deduct accounts written off during year:		
Utility Accounts	_____	
Others	_____	
_____	_____	
Total accounts written off		\$ 0
Balance end of year		\$ 0
<b>TOTAL ACCOUNTS AND NOTES RECEIVABLE - NET</b>		<b>\$ 27,906</b>



UTILITY NAME: North Peninsula Utilities Corporation

<b>YEAR OF REPORT</b> December 31, 2019
--

**ACCOUNTS RECEIVABLE FROM ASSOCIATED COMPANIES**  
**ACCOUNT 145**

Report each account receivable from associated companies separately.

DESCRIPTION (a)	TOTAL (b)
NONE	\$ _____
_____	_____
_____	_____
_____	_____
_____	_____
_____	_____
_____	_____
_____	_____
_____	_____
_____	_____
Total	\$ <u>0</u>

**NOTES RECEIVABLE FROM ASSOCIATED COMPANIES**  
**ACCOUNT 146**

Report each note receivable from associated companies separately.

DESCRIPTION (a)	INTEREST RATE (b)	TOTAL (c)
_____	%	\$ _____
_____	%	_____
_____	%	_____
_____	%	_____
_____	%	_____
_____	%	_____
_____	%	_____
_____	%	_____
_____	%	_____
Total		\$ <u>0</u>

**MISCELLANEOUS CURRENT AND ACCRUED ASSETS**  
**ACCOUNT 174**

DESCRIPTION - Provide itemized listing (a)	BALANCE END OF YEAR (b)
NONE	\$ _____
_____	_____
_____	_____
_____	_____
Total Miscellaneous Current and Accrued Liabilities	\$ <u>0</u>

UTILITY NAME: North Peninsula Utilities Corporation

<b>YEAR OF REPORT</b> December 31, 2019
--

**UNAMORTIZED DEBT DISCOUNT AND EXPENSE AND PREMIUM ON DEBT  
ACCOUNTS 181 AND 251**

Report the net discount and expense or premium separately for each security issue.

DESCRIPTION (a)	AMOUNT WRITTEN OFF DURING YEAR (b)	YEAR END BALANCE (c)
UNAMORTIZED DEBT DISCOUNT AND EXPENSE (Account 181): NONE	\$ _____	\$ _____
_____	_____	_____
_____	_____	_____
_____	_____	_____
Total Unamortized Debt Discount and Expense	\$ <u>0</u>	\$ <u>0</u>
UNAMORTIZED PREMIUM ON DEBT (Account 251): NONE	\$ _____	\$ _____
_____	_____	_____
_____	_____	_____
_____	_____	_____
Total Unamortized Premium on Debt	\$ <u>0</u>	\$ <u>0</u>

**EXTRAORDINARY PROPERTY LOSSES  
ACCOUNT 182**

Report each item separately.

DESCRIPTION (a)	TOTAL (b)
NONE	\$ _____
_____	_____
_____	_____
Total Extraordinary Property Losses	\$ <u>0</u>

UTILITY NAME: North Peninsula Utilities Corporation

**MISCELLANEOUS DEFERRED DEBITS  
ACCOUNT 186**

DESCRIPTION - Provide itemized listing (a)	AMOUNT WRITTEN OFF DURING YEAR (b)	YEAR END BALANCE (c)
DEFERRED RATE CASE EXPENSE (Class A Utilities: Account 186.1)		
2018/19 Rate Case	\$ 884	\$ 2,651
_____	_____	_____
_____	_____	_____
_____	_____	_____
Total Deferred Rate Case Expense	\$ 884	\$ 2,651
OTHER DEFERRED DEBITS (Class A Utilities: Account 186.2):		
Cur DEP STP Permit	\$ 0	\$ 0
Rehab Plant #3 Blower	_____	0
Current Complete STP Upgrade	_____	0
Service Territory Expansion	30,005	90,015
_____	_____	_____
_____	_____	_____
_____	_____	_____
Total Other Deferred Debits	\$ 30,005	\$ 90,015
REGULATORY ASSETS (Class A Utilities: Account. 186.3):		
NONE	\$ _____	\$ _____
_____	_____	_____
_____	_____	_____
_____	_____	_____
_____	_____	_____
_____	_____	_____
Total Regulatory Assets	\$ 0	\$ 0
<b>TOTAL MISCELLANEOUS DEFERRED DEBITS</b>	\$ 30,889	\$ 92,666

UTILITY NAME: North Peninsula Utilities Corporation

<b>YEAR OF REPORT</b> December 31, 2019
--

**CAPITAL STOCK  
ACCOUNTS 201 AND 204\***

DESCRIPTION (a)	RATE (b)	TOTAL (c)
<b>COMMON STOCK</b>		
Par or stated value per share	%	\$ 1
Shares authorized		100
Shares issued and outstanding		100
Total par value of stock issued	%	\$ 100
Dividends declared per share for year	%	\$ 0
<b>PREFERRED STOCK</b>		
Par or stated value per share	%	\$
Shares authorized		
Shares issued and outstanding		
Total par value of stock issued	%	\$
Dividends declared per share for year	%	\$

\* Account 204 not applicable for Class B utilities.

**BONDS  
ACCOUNT 221**

DESCRIPTION OF OBLIGATION (INCLUDING DATE OF ISSUE AND DATE OF MATURITY) (a)	INTEREST		PRINCIPAL AMOUNT PER BALANCE SHEET (d)
	ANNUAL RATE (b)	FIXED OR VARIABLE * (c)	
	%		\$
	%		
	%		
	%		
	%		
	%		
	%		
	%		
	%		
	%		
<b>Total</b>			\$ <u>0</u>

\* For variable rate obligations, provide the basis for the rate. (i.e.. prime + 2%, etc.)

UTILITY NAME: North Peninsula Utilities Corporation

<b>YEAR OF REPORT</b> December 31, 2019
--

**STATEMENT OF RETAINED EARNINGS**

1. Dividends should be shown for each class and series of capital stock. Show amounts as dividends per share.
2. Show separately the state and federal income tax effect of items shown in Account No. 439.

ACCT. NO. (a)	DESCRIPTION (b)	AMOUNTS (c)
215	Unappropriated Retained Earnings: Balance Beginning of Year	\$ (940,660)
439	Changes to Account: Adjustments to Retained Earnings ( requires Commission approval prior to use): Credits:	\$
	<u>Prior Period Adjustments to Accumulated Depreciation and Depreciation Expense</u> Per ORDER NO. PSC-2019-0461-PAA-SU	<u>74,309</u>
	Total Credits:	\$ 74,309
	Debits:	\$
	<u>Prior Period adjustment to remove deferred debits</u>	<u>13,430</u>
	Total Debits:	\$ 13,430
435	Balance Transferred from Income	\$ (72,146)
436	Appropriations of Retained Earnings:	
	_____	_____
	_____	_____
	Total Appropriations of Retained Earnings	\$ 0
	Dividends Declared:	
437	Preferred Stock Dividends Declared _____	_____
438	Common Stock Dividends Declared _____	_____
	_____	_____
	Total Dividends Declared	\$ 0
215	Year end Balance	\$ <u>(951,926)</u>
214	Appropriated Retained Earnings (state balance and purpose of each appropriated amount at year end):	
	_____	_____
	_____	_____
	_____	_____
214	Total Appropriated Retained Earnings	\$ 0
Total Retained Earnings		\$ <u>(951,926)</u>
Notes to Statement of Retained Earnings:		

UTILITY NAME: North Peninsula Utilities Corporation

<b>YEAR OF REPORT</b> December 31, 2019
--

**ADVANCES FROM ASSOCIATED COMPANIES  
ACCOUNT 223**

Report each advance separately.

DESCRIPTION (a)	TOTAL (b)
NONE	\$ _____
_____	_____
_____	_____
_____	_____
_____	_____
_____	_____
_____	_____
_____	_____
_____	_____
Total	\$ <u>0</u>

**OTHER LONG-TERM DEBT  
ACCOUNT 224**

DESCRIPTION OF OBLIGATION (INCLUDING DATE OF ISSUE AND DATE OF MATURITY) (a)	INTEREST		PRINCIPAL AMOUNT PER BALANCE SHEET (d)
	ANNUAL RATE (b)	FIXED OR VARIABLE * (c)	
Intercoastal 0447	6.70 %	Fixed	\$ 676,573
PNC 4608	11.00 %	Fixed	15,375
PNC 5718	15.49 %	Fixed	9,877
Seacoast/Floridian 7000	6.00 %	Fixed	75,000
Intercoastal 4301	6.50 %	Fixed	225,000
_____	%		_____
_____	%		_____
_____	%		_____
_____	%		_____
_____	%		_____
_____	%		_____
_____	%		_____
_____	%		_____
_____	%		_____
_____	%		_____
_____	%		_____
_____	%		_____
_____	%		_____
_____	%		_____
_____	%		_____
_____	%		_____
_____	%		_____
_____	%		_____
Total			\$ <u>1,001,825</u>

\* For variable rate obligations, provide the basis for the rate. (i.e.. prime + 2%, etc.)

UTILITY NAME: North Peninsula Utilities Corporation

<b>YEAR OF REPORT</b> December 31, 2019
--

**NOTES PAYABLE  
ACCOUNTS 232 AND 234**

DESCRIPTION OF OBLIGATION (INCLUDING DATE OF ISSUE AND DATE OF MATURITY) (a)	INTEREST		PRINCIPAL AMOUNT PER BALANCE SHEET (d)
	ANNUAL RATE (b)	FIXED OR VARIABLE * (c)	
NOTES PAYABLE ( Account 232):			
Notes Payable	%	Demand	\$ 28,000
	%		
	%		
	%		
	%		
	%		
	%		
	%		
	%		
	%		
<b>Total Account 232</b>			<b>\$ 28,000</b>
NOTES PAYABLE TO ASSOC. COMPANIES (Account 234):			
NONE	%		\$
	%		
	%		
	%		
	%		
	%		
	%		
	%		
	%		
<b>Total Account 234</b>			<b>\$ 0</b>

\* For variable rate obligations, provide the basis for the rate. (i.e.. prime + 2%, etc.)

**ACCOUNTS PAYABLE TO ASSOCIATED COMPANIES  
ACCOUNT 233**

Report each account payable separately.

DESCRIPTION (a)	TOTAL (b)
A/P Balance At this time	\$ 194,487
Net of various small accounts	
<b>Total</b>	<b>\$ 194,487</b>

**UTILITY NAME:** North Peninsula Utilities Corporation

**ACCRUED INTEREST AND EXPENSE  
ACCOUNTS 237 AND 427**

DESCRIPTION OF DEBIT (a)	BALANCE BEGINNING OF YEAR (b)	INTEREST ACCRUED DURING YEAR		INTEREST PAID DURING YEAR (e)	BALANCE END OF YEAR (f)
		ACCT. DEBIT (c)	AMOUNT (d)		
ACCOUNT NO. 237.1 - Accrued Interest on Long Term Debt					
Intercoastal 0447	\$ _____		\$ 47,044	\$ 47,044	\$ _____
Floridian 7000	_____		4,514	4,514	_____
PNC 4608/PNC 5718	_____		3,385	3,385	_____
Intercoastal 4301	_____		14,368	14,368	_____
Total Account 237.1	\$ _____		\$ 69,311	\$ 69,311	\$ _____
ACCOUNT NO. 237.2 - Accrued Interest on Other Liabilities					
_____	\$ _____	427			\$ _____
_____	_____				_____
_____	_____				_____
Total Account 237.2	\$ _____			\$ 0	\$ 0
Total Account 237 (1)	\$ _____			\$ 69,311	\$ 0
INTEREST EXPENSED:					
Total accrual Account 237		237	\$ 69,311		
Less Capitalized Interest Portion of AFUDC:					
_____					
_____					
Net Interest Expensed to Account No. 427 (2)			\$ 69,311		\$ 0

(1) Must agree to F-2 (a), Beginning and Ending Balance of Accrued Interest.  
(2) Must agree to F-3 (c), Current Year Interest Expense



**YEAR OF REPORT**  
December 31, 2019

**UTILITY NAME:** North Peninsula Utilities Corporation

**MISCELLANEOUS CURRENT AND ACCRUED LIABILITIES  
ACCOUNT 241**

DESCRIPTION - Provide itemized listing (a)	BALANCE END OF YEAR (b)
NONE _____ _____ _____	\$ _____ _____ _____
Total Miscellaneous Current and Accrued Liabilities	\$ _____ _____ 0

**ADVANCES FOR CONSTRUCTION  
ACCOUNT 252**

NAME OF PAYOR * (a)	BALANCE BEGINNING OF YEAR (b)	DEBITS		CREDITS (e)	BALANCE END OF YEAR (f)
		ACCT. DEBIT (c)	AMOUNT (d)		
NONE _____ _____ _____ _____ _____ _____ _____	\$ _____ _____ _____ _____ _____ _____ _____		\$ _____ _____ _____ _____ _____ _____ _____		\$ _____ _____ _____ _____ _____ _____ _____
Total	\$ _____ _____ 0		\$ _____ _____ 0		\$ _____ _____ 0

\* Report advances separately by reporting group, designating water or wastewater in column (a).

UTILITY NAME: North Peninsula Utilities Corporation

<b>YEAR OF REPORT</b> December 31, 2019
--

**OTHER DEFERRED CREDITS  
ACCOUNT 253**

DESCRIPTION - Provide itemized listing (a)	AMOUNT WRITTEN OFF DURING YEAR (b)	YEAR END BALANCE (c)
REGULATORY LIABILITIES (Class A Utilities: Account 253.1):		
NONE	\$ _____	\$ _____
_____	_____	_____
_____	_____	_____
_____	_____	_____
<b>Total Regulatory Liabilities</b>	\$ _____	\$ _____
OTHER DEFERRED LIABILITIES (Class A Utilities: Account 253.2):		
NONE	\$ _____	\$ _____
_____	_____	_____
_____	_____	_____
_____	_____	_____
_____	_____	_____
_____	_____	_____
<b>Total Other Deferred Liabilities</b>	\$ _____	\$ _____
<b>TOTAL OTHER DEFERRED CREDITS</b>	\$ _____	\$ _____

UTILITY NAME: North Peninsula Utilities Corporation

<b>YEAR OF REPORT</b> December 31, 2019
--

**CONTRIBUTIONS IN AID OF CONSTRUCTION  
ACCOUNT 271**

<b>DESCRIPTION (a)</b>	<b>WATER (W-7) (b)</b>	<b>WASTEWATER (S-7) (c)</b>	<b>W &amp; WW OTHER THAN SYSTEM REPORTING (d)</b>	<b>TOTAL (e)</b>
Balance first of year	\$ <u>0</u>	\$ <u>641,756</u>	\$ _____	\$ <u>641,756</u>
Add credits during year:	\$ <u>0</u>	\$ <u>0</u>	\$ _____	\$ <u>0</u>
Less debit charged during the year	\$ <u>0</u>	\$ <u>0</u>	\$ _____	\$ <u>0</u>
Total Contribution In Aid of Construction	\$ <u>0</u>	\$ <u>641,756</u>	\$ <u>0</u>	\$ <u>641,756</u>

**ACCUMULATED AMORTIZATION OF CONTRIBUTIONS IN AID OF CONSTRUCTION  
ACCOUNT 272**

<b>DESCRIPTION (a)</b>	<b>WATER (W-8(a)) (b)</b>	<b>WASTEWATER (S-8(a)) (c)</b>	<b>W &amp; WW OTHER THAN SYSTEM REPORTING (d)</b>	<b>TOTAL (e)</b>
Balance first of year	\$ <u>0</u>	\$ <u>641,019</u>	\$ _____	\$ <u>641,019</u>
Debits during the year:	\$ <u>0</u>	\$ <u>21</u>	\$ _____	\$ <u>21</u>
Credits during the year	\$ <u>0</u>	\$ <u>0</u>	\$ _____	\$ <u>0</u>
Total Accumulated Amortization of Contributions In Aid of Construction	\$ <u>0</u>	\$ <u>641,040</u>	\$ <u>0</u>	\$ <u>641,040</u>

**UTILITY NAME:** North Peninsula Utilities Corporation

**RECONCILIATION OF REPORTED NET INCOME WITH TAXABLE INCOME FOR FEDERAL INCOME TAXES (UTILITY OPERATIONS)**

1. The reconciliation should include the same detail as furnished on Schedule M-1 of the federal tax return for the year. The reconciliation shall be submitted even though there is no taxable income for the year. Descriptions should clearly indicate the nature of each reconciling amount and show the computations of all tax accruals.
2. If the utility is a member of a group which files a consolidated federal tax return, reconcile reported net income with taxable net income as if a separate return were to be filed, indicating intercompany amounts to be eliminated in such consolidated return. State names of group members, tax assigned to each group member, and basis of allocation, assignments or sharing of the consolidated tax among the group members.

DESCRIPTION (a)	REF. NO. (b)	AMOUNT (c)
Net income for the year	F-3(c)	\$ (72,146)
Reconciling items for the year:		
Taxable income not reported on books:		
NONE		
_____		_____
_____		_____
_____		_____
Deductions recorded on books not deducted for return:		
NONE		
_____		_____
_____		_____
_____		_____
Income recorded on books not included in return:		
NONE		
_____		_____
_____		_____
_____		_____
Deduction on return not charged against book income:		
NONE		
_____		_____
_____		_____
_____		_____
Federal tax net income		\$ (72,146)

Computation of tax :

# **WATER OPERATION SECTION**

**North Peninsula Utilities Corporation is a Wastewater Only  
Utility and all Water Schedules are omitted.**

**WASTEWATER  
OPERATION  
SECTION**



UTILITY NAME: North Peninsula Utilities Corporation

<b>YEAR OF REPORT</b> December 31, 2019
--

SYSTEM NAME / COUNTY : Volusia

**SCHEDULE OF YEAR END WASTEWATER RATE BASE**

ACCT. NO. (a)	ACCOUNT NAME (b)	REFERENCE PAGE (c)	WASTEWATER UTILITY (d)
101	Utility Plant In Service	S-4(a)	\$ 942,885
	Less:		
	Nonused and Useful Plant (1)		
108	Accumulated Depreciation	S-6(b)	744,555
110	Accumulated Amortization	F-8	0
271	Contributions in Aid of Construction	S-7	641,756
252	Advances for Construction	F-20	
Subtotal			\$ (443,426)
	Add:		
272	Accumulated Amortization of Contributions in Aid of Construction	S-8(a)	\$ 641,040
Subtotal			\$ 197,614
	Plus or Minus:		
114	Acquisition Adjustments (2)	F-7	
115	Accumulated Amortization of Acquisition Adjustments (2)	F-7	
	Working Capital Allowance (3)		28,107
	Other (Specify):		
WASTEWATER RATE BASE			\$ 225,721
WASTEWATER OPERATING INCOME		S-3	\$ (2,835)
ACHIEVED RATE OF RETURN (Wastewater Operating Income / Wastewater Rate Base)			-1.26%

NOTES : (1) Estimate based on the methodology used in the last rate proceeding.

(2) Include only those Acquisition Adjustments that have been approved by the Commission.

(3) Calculation consistent with last rate proceeding.

In absence of a rate proceeding, Class A utilities will use the Balance Sheet Method and Class B Utilities will use the One-eighth Operating and Maintenance Expense Method.



UTILITY NAME: North Peninsula Utilities Corporation

<b>YEAR OF REPORT</b> December 31, 2019
--

SYSTEM NAME / COUNTY : Volusia

**WASTEWATER OPERATING STATEMENT**

ACCT. NO. (a)	ACCOUNT NAME (b)	REFERENCE PAGE (c)	WASTEWATER UTILITY (d)
UTILITY OPERATING INCOME			
400	Operating Revenues	S-9(a)	\$ 246,345
530	Less: Guaranteed Revenue (and AFPI)	S-9(a)	0
Net Operating Revenues			\$ 246,345
401	Operating Expenses	S-10(a)	\$ 224,859
403	Depreciation Expense	S-6(a)	8,373
	Less: Amortization of CIAC	S-8(a)	21
Net Depreciation Expense			\$ 8,352
406	Amortization of Utility Plant Acquisition Adjustment	F-7	
407	Amortization Expense (Other than CLAC)	F-8	0
408.10	Taxes Other Than Income Utility Regulatory Assessment Fee		11,086
408.11	Property Taxes		4,883
408.12	Payroll Taxes		
408.13	Other Taxes and Licenses		
408	Total Taxes Other Than Income		\$ 15,969
409.1	Income Taxes		
410.10	Deferred Federal Income Taxes		
410.11	Deferred State Income Taxes		
411.10	Provision for Deferred Income Taxes - Credit		
412.10	Investment Tax Credits Deferred to Future Periods		
412.11	Investment Tax Credits Restored to Operating Income		
Utility Operating Expenses			\$ 249,180
Utility Operating Income			\$ (2,835)
530	Add Back: Guaranteed Revenue (and AFPI)	S-9(a)	\$ 0
413	Income From Utility Plant Leased to Others		
414	Gains (losses) From Disposition of Utility Property		
420	Allowance for Funds Used During Construction		
Total Utility Operating Income			\$ (2,835)

**YEAR OF REPORT**  
December 31, 2019

**UTILITY NAME:** North Peninsula Utilities Corporation

**SYSTEM NAME / COUNTY :** Volusia

**WASTEWATER UTILITY PLANT ACCOUNTS**

ACCT. NO. (a)	ACCOUNT NAME (b)	PREVIOUS YEAR (c)	ADDITIONS (d)	RETIREMENTS (e)	CURRENT YEAR (f)
		\$	\$	\$	\$
351	Organization	0			0
352	Franchises	6,310			6,310
353	Land and Land Rights	46,800			46,800
354	Structures and Improvements	167,990		15,612	152,378
355	Power Generation Equipment	0			0
360	Collection Sewers - Force	325,828		28,963	296,865
361	Collection Sewers - Gravity	5,410		31	5,379
362	Special Collecting Structures	0			0
363	Services to Customers	29,139	1,462	165	30,436
364	Flow Measuring Devices	0	2,500		2,500
365	Flow Measuring Installations	0			0
366	Reuse Services	0			0
367	Reuse Meters and Meter Installations	0			0
370	Receiving Wells	14,124		80	14,044
371	Pumping Equipment	36,714	16,046	10,217	42,543
374	Reuse Distribution Reservoirs	0			0
375	Reuse Transmission and Distribution System	0			0
380	Treatment and Disposal Equipment	370,601	30,647	55,618	345,630
381	Plant Sewers	0			0
382	Outfall Sewer Lines	0			0
389	Other Plant Miscellaneous Equipment	0			0
390	Office Furniture and Equipment	0			0
391	Transportation Equipment	0			0
392	Stores Equipment	0			0
393	Tools, Shop and Garage Equipment	0			0
394	Laboratory Equipment	0			0
395	Power Operated Equipment	0			0
396	Communication Equipment	0			0
397	Miscellaneous Equipment	0			0
398	Other Tangible Plant	0			0
<b>Total Wastewater Plant</b>		<b>\$ 1,002,916</b>	<b>\$ 50,655</b>	<b>\$ 110,686</b>	<b>\$ 942,885</b>

**NOTE:** Any adjustments made to reclassify property from one account to another must be footnoted. Accounts Adjusted to account for FPSC ORDER NO. PSC-2019-0461-PAA-SU.

UTILITY NAME: North Peninsula Utilities Corporation

SYSTEM NAME / COUNTY : Volusia

**WASTEWATER UTILITY PLANT MATRIX**

ACCT. NO. (a)	ACCOUNT NAME (b)	.1 INTANGIBLE PLANT (g)	.2 COLLECTION PLANT (h)	.3 SYSTEM PUMPING PLANT (i)	.4 TREATMENT AND DISPOSAL (j)	.5 RECLAIMED WASTEWATER TREATMENT PLANT (i)	.6 RECLAIMED WASTEWATER DISTRIBUTION PLANT (j)	.7 GENERAL PLANT (k)
351	Organization	\$						
352	Franchises	6,310						
353	Land and Land Rights				46,800			
354	Structures and Improvements				152,378			
355	Power Generation Equipment							
360	Collection Sewers - Force	296,865						
361	Collection Sewers - Gravity	5,379						
362	Special Collecting Structures							
363	Services to Customers	30,436						
364	Flow Measuring Devices	2,500						
365	Flow Measuring Installations							
366	Reuse Services							
367	Reuse Meters and Meter Installations							
370	Receiving Wells			14,044				
371	Pumping Equipment			42,543				
374	Reuse Distribution Reservoirs							
375	Reuse Transmission and Distribution System							
380	Treatment and Disposal Equipment				345,630			
381	Plant Sewers							
382	Outfall Sewer Lines							
389	Other Plant Miscellaneous Equipment							
390	Office Furniture and Equipment							
391	Transportation Equipment							
392	Stores Equipment							
393	Tools, Shop and Garage Equipment							
394	Laboratory Equipment							
395	Power Operated Equipment							
396	Communication Equipment							
397	Miscellaneous Equipment							
398	Other Tangible Plant							
	Total Wastewater Plant	\$ 6,310	\$ 335,180	\$ 56,587	\$ 544,808	\$ 0	\$ 0	\$

NOTE: Any adjustments made to reclassify property from one account to another must be footnoted.

UTILITY NAME: North Peninsula Utilities Corporation

<b>YEAR OF REPORT</b> December 31, 2019
--

SYSTEM NAME / COUNTY : Volusia

**BASIS FOR WASTEWATER DEPRECIATION CHARGES**

ACCT. NO. (a)	ACCOUNT NAME (b)	AVERAGE SERVICE LIFE IN YEARS (c)	AVERAGE NET SALVAGE IN PERCENT (d)	DEPRECIATION RATE APPLIED IN PERCENT (100% - D) / C (e)
354	Structures and Improvements	32		3.13%
355	Power Generation Equipment			
360	Collection Sewers - Force	30		3.33%
361	Collection Sewers - Gravity	45		2.22%
362	Special Collecting Structures			
363	Services to Customers	38		2.63%
364	Flow Measuring Devices	5		20.00%
365	Flow Measuring Installations			
366	Reuse Services			
367	Reuse Meters and Meter Installations			
370	Receiving Wells	30		3.33%
371	Pumping Equipment	18		5.56%
374	Reuse Distribution Reservoirs			
375	Reuse Transmission/Distribution Sys.			
380	Treatment and Disposal Equipment	18		5.56%
381	Plant Sewers			
382	Outfall Sewer Lines			
389	Other Plant Miscellaneous Equipment			
390	Office Furniture and Equipment			
391	Transportation Equipment			
392	Stores Equipment			
393	Tools, Shop and Garage Equipment			
394	Laboratory Equipment			
395	Power Operated Equipment			
396	Communication Equipment			
397	Miscellaneous Equipment			
352	Franchises	40		2.50%
Wastewater Plant Composite Depreciation Rate *				

\* If depreciation rates prescribed by this Commission are on a total composite basis, entries should be made on this line only.

**YEAR OF REPORT**  
December 31, 2019

**UTILITY NAME:** North Peninsula Utilities Corporation

**SYSTEM NAME / COUNTY :** Volusia

**ANALYSIS OF ENTRIES IN WASTEWATER ACCUMULATED DEPRECIATION**

ACCT. NO. (a)	ACCOUNT NAME (b)	BALANCE AT BEGINNING OF YEAR (c)	ACCRUALS (d)	OTHER CREDITS * (e)	TOTAL CREDITS (d + e) (f)
354	Structures and Improvements	\$ 163,621	\$ 4,762		\$ 4,762
355	Power Generation Equipment	0			0
360	Collection Sewers - Force	321,528			0
361	Collection Sewers - Gravity	3,313	120		120
362	Special Collecting Structures	0			0
363	Services to Customers	29,139			0
364	Flow Measuring Devices	0	250		250
365	Flow Measuring Installations	0			0
366	Reuse Services	0			0
367	Reuse Meters and Meter Installations	0			0
370	Receiving Wells	2,491	468		468
371	Pumping Equipment	9,845	1,918		1,918
374	Reuse Distribution Reservoirs	0			0
375	Reuse Transmission/Distribution Sys.	0			0
380	Treatment and Disposal Equipment	392,189	851		851
381	Plant Sewers	0			0
382	Outfall Sewer Lines	0			0
389	Other Plant Miscellaneous Equipment	0			0
390	Office Furniture and Equipment	0			0
391	Transportation Equipment	0			0
392	Stores Equipment	0			0
393	Tools, Shop and Garage Equipment	0			0
394	Laboratory Equipment	0			0
395	Power Operated Equipment	0			0
396	Communication Equipment	0			0
397	Miscellaneous Equipment	0			0
352	Franchises	6,306	4		4
Total Depreciable Wastewater Plant in Service		\$ 928,432	\$ 8,373	\$ 0	\$ 8,373

\* Specify nature of transaction.  
Use ( ) to denote reversal entries.

S-c(a)  
GROUP \_\_\_\_\_

**YEAR OF REPORT**  
December 31, 2019

**UTILITY NAME:** North Peninsula Utilities Corporation

**SYSTEM NAME / COUNTY :** Volusia

**ANALYSIS OF ENTRIES IN WASTEWATER ACCUMULATED DEPRECIATION**

ACCT. NO. (a)	ACCOUNT NAME (b)	PLANT RETIRED (g)	SALVAGE AND INSURANCE (h)	COST OF REMOVAL AND OTHER CHARGES (i)	TOTAL CHARGES (g-h+i) (j)	BALANCE AT END OF YEAR (e+f-j) (k)
354	Structures and Improvements	\$ 30,644			\$ 30,644	\$ 137,739
355	Power Generation Equipment				0	0
360	Collection Sewers - Force	58,215			58,215	263,313
361	Collection Sewers - Gravity				0	3,433
362	Special Collecting Structures				0	0
363	Services to Customers	8			8	29,131
364	Flow Measuring Devices				0	250
365	Flow Measuring Installations				0	0
366	Reuse Services				0	0
367	Reuse Meters and Meter Installations				0	0
370	Receiving Wells	1			1	2,958
371	Pumping Equipment	10,011			10,011	1,752
374	Reuse Distribution Reservoirs				0	0
375	Reuse Transmission/Distribution Sys.				0	0
380	Treatment and Disposal Equipment	93,371			93,371	299,669
381	Plant Sewers				0	0
382	Outfall Sewer Lines				0	0
389	Other Plant Miscellaneous Equipment				0	0
390	Office Furniture and Equipment				0	0
391	Transportation Equipment				0	0
392	Stores Equipment				0	0
393	Tools, Shop and Garage Equipment				0	0
394	Laboratory Equipment				0	0
395	Power Operated Equipment				0	0
396	Communication Equipment				0	0
397	Miscellaneous Equipment				0	0
352	Franchises				0	6,310
Total Depreciable Wastewater Plant in Service		\$ 192,250	\$ 0	\$ 0	\$ 192,250	\$ 744,555

\* Specify nature of transaction.  
Use ( ) to denote reversal entries.



UTILITY NAME: North Peninsula Utilities Corporation

<b>YEAR OF REPORT</b> December 31, 2019
--

SYSTEM NAME / COUNTY : Volusia

**WASTEWATER CIAC SCHEDULE "A"**

ADDITIONS TO CONTRIBUTIONS IN AID OF CONSTRUCTION RECEIVED FROM CAPACITY,  
MAIN EXTENSION AND CUSTOMER CONNECTION CHARGES RECEIVED DURING THE YEAR

DESCRIPTION OF CHARGE (a)	NUMBER OF CONNECTIONS (b)	CHARGE PER CONNECTION (c)	AMOUNT (d)
_____	_____	\$ _____	\$ _____ 0
_____	_____	_____	_____ 0
_____	_____	_____	_____ 0
_____	_____	_____	_____ 0
_____	_____	_____	_____ 0
_____	_____	_____	_____ 0
_____	_____	_____	_____ 0
_____	_____	_____	_____ 0
_____	_____	_____	_____ 0
Total Credits			\$ _____ 0

**ACCUMULATED AMORTIZATION OF WASTEWATER CONTRIBUTIONS IN AID OF CONSTRUCTION**

DESCRIPTION (a)	WASTEWATER (b)
Balance first of year	\$ _____ 641,019
Debits during the year:	
Accruals charged to Account 272	\$ _____ 21
Other debits (specify) :	
_____	_____
_____	_____
Total debits	\$ _____ 21
Credits during the year (specify) :	
_____	\$ _____
_____	_____
Total credits	\$ _____ 0
Balance end of year	\$ _____ 641,040



UTILITY NAME: North Peninsula Utilities Corporation

**YEAR OF REPORT**

December 31, 2019

SYSTEM NAME / COUNTY : Volusia

**WASTEWATER CIAC SCHEDULE "B"**

ADDITIONS TO CONTRIBUTIONS IN AID OF CONSTRUCTION  
RECEIVED FROM ALL DEVELOPERS OR CONTRACTORS AGREEMENTS  
WHICH CASH OR PROPERTY WAS RECEIVED DURING THE YEAR

<b>DESCRIPTION</b> (a)	<b>INDICATE CASH OR PROPERTY</b> (b)	<b>AMOUNT</b> (c)
None		\$ _____
_____	_____	_____
_____	_____	_____
_____	_____	_____
_____	_____	_____
_____	_____	_____
_____	_____	_____
_____	_____	_____
_____	_____	_____
_____	_____	_____
_____	_____	_____
_____	_____	_____
_____	_____	_____
_____	_____	_____
_____	_____	_____
_____	_____	_____
_____	_____	_____
_____	_____	_____
_____	_____	_____
Total Credits		\$ _____ 0

UTILITY NAME: North Peninsula Utilities Corporation

<b>YEAR OF REPORT</b> December 31, 2019
--

SYSTEM NAME / COUNTY : Volusia

**WASTEWATER OPERATING REVENUE**

ACCT. NO. (a)	DESCRIPTION (b)	BEGINNING YEAR NO. CUSTOMERS * (c)	YEAR END NUMBER OF CUSTOMERS * (d)	AMOUNTS (e)
<b>WASTEWATER SALES</b>				
Flat Rate Revenues:				
521.1	Residential Revenues	600	602	\$ 238,481
521.2	Commercial Revenues	1	1	5,640
521.3	Industrial Revenues			
521.4	Revenues From Public Authorities			
521.5	Multiple Family Dwelling Revenues			
521.6	Other Revenues			
521	Total Flat Rate Revenues	601	603	\$ 244,121
Measured Revenues:				
522.1	Residential Revenues	None		
522.2	Commercial Revenues			
522.3	Industrial Revenues			
522.4	Revenues From Public Authorities			
522.5	Multiple Family Dwelling Revenues			
522	Total Measured Revenues	0	0	\$ 0
523	Revenues From Public Authorities			
524	Revenues From Other Systems			
525	Interdepartmental Revenues			
Total Wastewater Sales		601	603	\$ 244,121
<b>OTHER WASTEWATER REVENUES</b>				
530	Guaranteed Revenues (Including Allowance for Funds Prudently Invested or AFPI)			\$
531	Sale of Sludge			
532	Forfeited Discounts			
534	Rents From Wastewater Property			
535	Interdepartmental Rents			
536	Other Wastewater Revenues			2,224
Total Other Wastewater Revenues				\$ 2,224

\* Customer is defined by Rule 25-30.210(1), Florida Administrative Code.

UTILITY NAME: North Peninsula Utilities Corporation

<b>YEAR OF REPORT</b> December 31, 2019
--

SYSTEM NAME / COUNTY : Volusia

**WASTEWATER OPERATING REVENUE**

ACCT. NO. (a)	DESCRIPTION (b)	BEGINNING YEAR NO. CUSTOMERS * (c)	YEAR END NUMBER OF CUSTOMERS * (d)	AMOUNTS (e)
RECLAIMED WATER SALES				
540.1	Flat Rate Reuse Revenues: Residential Reuse Revenues	_____	_____	\$ _____
540.2	Commercial Reuse Revenues	_____	_____	_____
540.3	Industrial Reuse Revenues	_____	_____	_____
540.4	Reuse Revenues From Public Authorities	_____	_____	_____
540.5	Other Revenues	_____	_____	_____
540	Total Flat Rate Reuse Revenues	0	0	\$ _____ 0
541.1	Measured Reuse Revenues: Residential Reuse Revenues	_____	_____	_____
541.2	Commercial Reuse Revenues	_____	_____	_____
541.3	Industrial Reuse Revenues	_____	_____	_____
541.4	Reuse Revenues From Public Authorities	_____	_____	_____
541	Total Measured Reuse Revenues	0	0	\$ _____ 0
544	Reuse Revenues From Other Systems	_____	_____	_____
Total Reclaimed Water Sales				\$ _____ 0
Total Wastewater Operating Revenues				\$ <u>246,345</u>

\* Customer is defined by Rule 25-30.210(1), Florida Administrative Code.

**UTILITY NAME:** North Peninsula Utilities Corporation

**SYSTEM NAME / COUNTY :** Volusia

**WASTEWATER UTILITY EXPENSE ACCOUNT MATRIX**

ACCT. NO. (a)	ACCOUNT NAME (b)	CURRENT YEAR (c)	.1 COLLECTION EXPENSES- OPERATIONS (d)	.2 COLLECTION EXPENSES- MAINTENANCE (e)	.3 PUMPING EXPENSES - OPERATIONS (f)	.4 PUMPING EXPENSES - MAINTENANCE (g)	.5 TREATMENT & DISPOSAL EXPENSES - OPERATIONS (h)	.6 TREATMENT & DISPOSAL EXPENSES - MAINTENANCE (i)
701	Salaries and Wages - Employees	\$ 0	\$					
703	Salaries and Wages - Officers, Directors and Majority Stockholders	0						
704	Employee Pensions and Benefits	0						
710	Purchased Sewage Treatment	0						
711	Sludge Removal Expense	26,820					26,820	
715	Purchased Power	12,835			1,284		11,552	
716	Fuel for Power Production	0						
718	Chemicals	4,974					4,974	
720	Materials and Supplies	3,434	500	500			2,434	
731	Contractual Services-Engineering	2,205						
732	Contractual Services - Accounting	6,900						
733	Contractual Services - Legal	590						
734	Contractual Services - Mgt. Fees	92,085						
735	Contractual Services - Testing	11,538					11,538	
736	Contractual Services - Other	23,900					17,925	5,975
741	Rental of Building/Real Property	0						
742	Rental of Equipment	0						
750	Transportation Expenses	883						
756	Insurance - Vehicle	0						
757	Insurance - General Liability	911						
758	Insurance - Workman's Comp.	0						
759	Insurance - Other	116						
760	Advertising Expense	0						
766	Regulatory Commission Expenses							
	- Amortization of Rate Case Expense	884						
767	Regulatory Commission Exp -Other	30,005						
770	Bad Debt Expense	0						
775	Miscellaneous Expenses	6,779						
Total Wastewater Utility Expenses		\$ 224,859	\$ 500	\$ 500	\$ 1,284	\$ 0	\$ 75,243	\$ 5,975

**UTILITY NAME:** North Peninsula Utilities Corporation

**SYSTEM NAME / COUNTY :** Volusia

**WASTEWATER UTILITY EXPENSE ACCOUNT MATRIX**

ACCT. NO. (a)	ACCOUNT NAME (b)	.7 CUSTOMER ACCOUNTS EXPENSE (j)	.8 ADMIN. & GENERAL EXPENSES (k)	.9 RECLAIMED WATER TREATMENT EXPENSES- OPERATIONS (l)	.10 RECLAIMED WATER TREATMENT EXPENSES- MAINTENANCE (m)	.11 RECLAIMED WATER DISTRIBUTION EXPENSES- OPERATIONS (n)	.12 RECLAIMED WATER DISTRIBUTION EXPENSES- MAINTENANCE (o)
701	Salaries and Wages - Employees	\$					
703	Salaries and Wages - Officers, Directors and Majority Stockholders						
704	Employee Pensions and Benefits						
710	Purchased Sewage Treatment						
711	Sludge Removal Expense						
715	Purchased Power						
716	Fuel for Power Purchased						
718	Chemicals						
720	Materials and Supplies						
731	Contractual Services-Engineering		2,205				
732	Contractual Services - Accounting		6,900				
733	Contractual Services - Legal		590				
734	Contractual Services - Mgt. Fees		92,085				
735	Contractual Services - Testing						
736	Contractual Services - Other						
741	Rental of Building/Real Property						
742	Rental of Equipment						
750	Transportation Expenses		883				
756	Insurance - Vehicle						
757	Insurance - General Liability		911				
758	Insurance - Workman's Comp.						
759	Insurance - Other		116				
760	Advertising Expense						
766	Regulatory Commission Expenses		884				
767	- Amortization of Rate Case Expense		30,005				
770	Regulatory Commission Exp.-Other						
770	Bad Debt Expense						
775	Miscellaneous Expenses		6,779				
Total Wastewater Utility Expenses		\$ 0	\$ 141,358	\$ 0	\$ 0	\$ 0	\$ 0

UTILITY NAME: North Peninsula Utilities Corporation

<b>YEAR OF REPORT</b> December 31, 2019
--

SYSTEM NAME / COUNTY : Volusia

**CALCULATION OF THE WASTEWATER SYSTEM METER EQUIVALENTS**

WATER METER SIZE (a)	TYPE OF WATER METER (b)	EQUIVALENT FACTOR (c)	NUMBER OF WATER METERS (d)	TOTAL NUMBER OF METER EQUIVALENTS (c x d) (e)
All Residential		1.0		0
5/8"	Displacement	1.0	592	592
3/4"	Displacement	1.5		0
1"	Displacement	2.5		0
1 1/2"	Displacement or Turbine	5.0		0
2"	Displacement, Compound or Turbine	8.0		0
3"	Displacement	15.0	1	14
3"	Compound	16.0		0
3"	Turbine	17.5		0
4"	Displacement or Compound	25.0		0
4"	Turbine	30.0		0
6"	Displacement or Compound	50.0		0
6"	Turbine	62.5		0
8"	Compound	80.0		0
8"	Turbine	90.0		0
10"	Compound	115.0		0
10"	Turbine	145.0		0
12"	Turbine	215.0		0
Total Wastewater System Meter Equivalents				<u>606</u>

**CALCULATION OF THE WASTEWATER SYSTEM EQUIVALENT RESIDENTIAL CONNECTIONS**

Provide a calculation used to determine the value of one wastewater equivalent residential connection (ERC).

Use one of the following methods:

(a) If actual flow data are available from the preceding 12 months, divide the total annual single family residence (SFR) gallons sold by the average number of single family residence customers for the same period and divide the result by 365 days.

(b) If no historical flow data are available, use:

$$ERC = ( \text{Total SFR gallons treated (Omit 000)} / 365 \text{ days} / 280 \text{ gallons per day} )$$

For wastewater only utilities:

Subtract all general use and other non residential customer gallons from the total gallons treated.

Divide the remainder (SFR customers) by 365 days to reveal single family residence customer gallons per day.

**NOTE:** Total gallons treated includes both treated and purchased treatment.

ERC Calculation:
------------------

UTILITY NAME: North Peninsula Utilities Corporation

SYSTEM NAME / COUNTY : Volusia

**WASTEWATER TREATMENT PLANT INFORMATION**

Provide a separate sheet for each wastewater treatment facility

Permitted Capacity	181,000	GPD(k)	
Basis of Permit Capacity (1)			
Manufacturer	McNeil		
Type (2)	Contact Stabilization		
Hydraulic Capacity	210,000	GPD	
Average Daily Flow	0.04698		
Total Gallons of Wastewater Treated	17,150,000		
Method of Effluent Disposal	RIB		

(1) Basis of permitted capacity as stated on the Florida DEP WWTP Operating Permit  
(i.e. average annual daily flow, etc.)

(2) Contact stabilization, advanced treatment, etc.

**UTILITY NAME:** North Peninsula Utilities Corporation

**SYSTEM NAME / COUNTY :** Volusia

**OTHER WASTEWATER SYSTEM INFORMATION**

Furnish information below for each system. A separate page should be supplied where necessary.

1. Present number of ERCs\* now being served 606
2. Maximum number of ERCs\* which can be served 699
3. Present system connection capacity (in ERCs\*) using existing lines 699
4. Future connection capacity (in ERCs\*) upon service area buildout 699
5. Estimated annual increase in ERCs\* Stable 0-2
6. Describe any plans and estimated completion dates for any enlargements or improvements of this system  
System in constant need of repair  
S'IP needs complete overhaul
7. If the utility uses reuse as a means of effluent disposal, attach a list of the reuse end users and the amount of reuse provided to each, if known. N/A
8. If the utility does not engage in reuse, has a reuse feasibility study been completed?No  
 If so, when? N/A
9. Has the utility been required by the DEP or water management district to implement reuse? No  
 If so, what are the utility's plans to comply with this requirement? N/A
10. When did the company last file a capacity analysis report with the DEP? Unknown
11. If the present system does not meet the requirements of DEP rules:
  - a. Attach a description of the plant upgrade necessary to meet the DEP rules.
  - b. Have these plans been approved by DEP? N/A
  - c. When will construction begin? N/A
  - d. Attach plans for funding the required upgrading.
  - e. Is this system under any Consent Order with DEP? No
12. Department of Environmental Protection ID # FLA011188

\* An ERC is determined based on the calculation on S-11.



**Reconciliation of Revenue to  
Regulatory Assessment Fee Revenue  
Wastewater Operations  
Class A & B**

**Company: North Peninsula Utilities Company  
For the Year Ended December 31, 2019**

(a)	(b)	(c)	(d)
Accounts	Gross Wastewater Revenues Per Sch. S-9	Gross Wastewater Revenues Per RAF Return	Difference (b) - (c)
Gross Revenue:			
Total Flat-Rate Revenues (521.1 - 521.6)	\$ 244,121.00	\$ 246,345.00	\$ (2,224.00)
Total Measured Revenues (522.1 - 522.5)			
Revenues from Public Authorities (523)			
Revenues from Other Systems (524)			
Interdepartmental Revenues (525)			
Total Other Wastewater Revenues (530 - 536)	\$ 2,224.00		\$ 2,224.00
Reclaimed Water Sales (540.1 - 544)			
<b>Total Wastewater Operating Revenue</b>	<b>\$ 246,345.00</b>	<b>\$ 246,345.00</b>	<b>\$ -</b>
<b>LESS: Expense for Purchased Wastewater from FPSC-Regulated Utility</b>			
<b>Net Wastewater Operating Revenues</b>	<b>\$ 246,345.00</b>	<b>\$ 246,345.00</b>	<b>\$ -</b>

**Explanations:**

Late fees were included in the total flat rate revenues on the Regulatory Assessment Fee return instead of shown separately.

**Instructions:**

For the current year, reconcile the gross wastewater revenues reported on Schedule S-9 with the gross wastewater revenues reported on the company's regulatory assessment fee return. Explain any differences reported in column (d).