

CLASS "A" OR "B"

WATER AND/OR WASTEWATER UTILITIES
(Gross Revenue of More Than \$200,000 Each)

ANNUAL REPORT

OF
SU915-20-AR
WU920-20-AR
Ni Florida, Inc.

OFFICIAL COPY
Public Service Commission
Do Not Remove From This Office

Exact Legal Name of Respondent

104S & 388W

Certificate Number(s)

Submitted To The

STATE OF FLORIDA



PUBLIC SERVICE COMMISSION

FOR THE

YEAR ENDED DECEMBER 31, 2020

RECEIVED
FLORIDA PUBLIC SERVICE
COMMISSION
2021 APR 13 AM 6:12
DIVISION OF
ACCOUNTING & FINANCE

THIS PAGE LEFT

BLANK INTENTIONALLY

GENERAL INSTRUCTIONS

1. Prepare this report in conformity with the 1996 National Association of Regulatory Utility Commissioners Uniform System of Accounts for Water and/or Wastewater Utilities (USOA).
2. Interpret all accounting words and phrases in accordance with the USOA.
3. Complete each question fully and accurately, even if it has been answered in a previous annual report. Enter the word "None" where it truly and completely states the fact.
4. For any question, section, or page which is not applicable to the respondent, enter the words "Not Applicable." Do not omit any pages.
5. Where dates are called for, the month and day should be stated as well as the year.
6. All schedules requiring dollar entries should be rounded to the nearest dollar unless otherwise specifically indicated.
7. Complete this report by means which result in a permanent record, such as by computer or typewriter.
8. If there is not enough room on any schedule, an additional page or pages may be added, provided the format of the added schedule matches the format of the schedule with not enough room. Such a schedule should reference the appropriate schedules, state the name of the utility, and state the year of the report.
9. If it is necessary or desirable to insert additional statements for the purpose of further explanation of schedules, such statement should be made at the bottom of the page or an additional page inserted. Any additional pages should state the name of the utility, the year of the report, and reference the appropriate schedule.
10. For water and wastewater utilities with more than one rate group and/or system, water and wastewater pages should be completed for each rate group and/or system group. These pages should be grouped together and tabbed by rate group and/or system.
11. All other water and wastewater operations not regulated by the Commission and other regulated industries should be reported as "Other than Reporting Systems."
12. Financial information for multiple systems charging rates which are covered under the same tariff should be reported as one system. However, the engineering data must be reported by individual system.
13. For water and wastewater utilities with more than one system, one (1) copy of workpapers showing the consolidation of systems for the operating sections, should be filed with the annual report.
14. The report should be filled out in quadruplicate and the original and two copies returned by March 31, of the year following the date of the report. The report should be returned to:

**Florida Public Service Commission
Division of Economic Regulation
2540 Shumard Oak Boulevard
Tallahassee, Florida 32399-0850**

The fourth copy should be retained by the utility.

TABLE OF CONTENTS

SCHEDULE	PAGE	SCHEDULE	PAGE
EXECUTIVE SUMMARY			
Certification	E-1	Business Contracts with Officers, Directors and Affiliates	E-7
General Information	E-2	Affiliation of Officers and Directors	E-8
Directory of Personnel Who Contact the FPSC	E-3	Businesses which are a Byproduct, Coproduct or Joint Product Result of Providing Service	E-9
Company Profile	E-4	Business Transactions with Related Parties. Part I and II	E-10
Parent / Affiliate Organization Chart	E-5		
Compensation of Officers & Directors	E-6		
FINANCIAL SECTION			
Comparative Balance Sheet - Assets and Other Debits	F-1	Unamortized Debt Discount / Expense / Premium	F-13
Comparative Balance Sheet - Equity Capital and Liabilities	F-2	Extraordinary Property Losses	F-13
Comparative Operating Statement	F-3	Miscellaneous Deferred Debits	F-14
Year End Rate Base	F-4	Capital Stock	F-15
Year End Capital Structure	F-5	Bonds	F-15
Capital Structure Adjustments	F-6	Statement of Retained Earnings	F-16
Utility Plant	F-7	Advances from Associated Companies	F-17
Utility Plant Acquisition Adjustments	F-7	Other Long Term Debt	F-17
Accumulated Depreciation	F-8	Notes Payable	F-18
Accumulated Amortization	F-8	Accounts Payable to Associated Companies	F-18
Regulatory Commission Expense - Amortization of Rate Case Expense	F-9	Accrued Interest and Expense	F-19
Nonutility Property	F-9	Miscellaneous Current & Accrued Liabilities	F-20
Special Deposits	F-9	Advances for Construction	F-20
Investments and Special Funds	F-10	Other Deferred Credits	F-21
Accounts and Notes Receivable - Net	F-11	Contributions In Aid of Construction	F-22
Accounts Receivable from Associated Companies	F-12	Accumulated Amortization of CIAC	F-22
Notes Receivable from Associated Companies	F-12	Reconciliation of Reported Net Income with Taxable Income for Federal Income Taxes	F-23
Miscellaneous Current & Accrued Assets	F-12		

TABLE OF CONTENTS

SCHEDULE	PAGE	SCHEDULE	PAGE
WATER OPERATION SECTION			
Water Listing of System Groups	W-1	CIAC Additions / Amortization	W-8
Year End Water Rate Base	W-2	Water Operating Revenue	W-9
Water Operating Statement	W-3	Water Utility Expense Accounts	W-10
Water Utility Plant Accounts	W-4	Pumping and Purchased Water Statistics, Source Supply	W-11
Basis for Water Depreciation Charges	W-5	Water Treatment Plant Information	W-12
Analysis of Entries in Water Depreciation Reserve	W-6	Calculation of ERCs	W-13
Contributions In Aid of Construction	W-7	Other Water System Information	W-14
WASTEWATER OPERATION SECTION			
Wastewater Listing of System Groups	S-1	Contributions In Aid of Construction	S-7
Year End Wastewater Rate Base	S-2	CIAC Additions / Amortization	S-8
Wastewater Operating Statement	S-3	Wastewater Operating Revenue	S-9
Wastewater Utility Plant Accounts	S-4	Wastewater Utility Expense Accounts	S-10
Basis for Wastewater Depreciation Charges	S-5	Calculation of ERCs	S-11
Analysis of Entries in Wastewater Depreciation Reserve	S-6	Wastewater Treatment Plant Information	S-12
		Other Wastewater System Information	S-13

THIS PAGE LEFT

BLANK INTENTIONALLY

**EXECUTIVE
SUMMARY**

THIS PAGE LEFT
BLANK INTENTIONALLY

UTILITY NAME: Ni Florida, Inc.

YEAR OF REPORT
December 31, 2020

CERTIFICATION OF ANNUAL REPORT

I HEREBY CERTIFY, to the best of my knowledge and belief:

YES	NO
<input checked="" type="checkbox"/>	<input type="checkbox"/>

1. The utility is in substantial compliance with the Uniform System of Accounts prescribed by the Florida Public Service Commission.

YES	NO
<input checked="" type="checkbox"/>	<input type="checkbox"/>

2. The utility is in substantial compliance with all applicable rules and orders of the Florida Public Service Commission.

YES	NO
<input checked="" type="checkbox"/>	<input type="checkbox"/>

3. There have been no communications from regulatory agencies concerning noncompliance with, or deficiencies in, financial reporting practices that could have a material effect on the the financial statement of the utility.

YES	NO
<input checked="" type="checkbox"/>	<input type="checkbox"/>

4. The annual report fairly represents the financial condition and results of operations of the respondent for the period presented and other information and statements presented in the the report as to the business affairs of the respondent are true, correct and complete for the period for which it represents.

Items Certified			
1.	2.	3.	4.
<input type="checkbox"/>	<input type="checkbox"/>	<input type="checkbox"/>	<input type="checkbox"/>

(Signature of Chief Executive Officer of the utility) *

1.	2.	3.	4.
<input checked="" type="checkbox"/>	<input checked="" type="checkbox"/>	<input checked="" type="checkbox"/>	<input checked="" type="checkbox"/>

W B Michael

(Signature of Chief Financial Officer of the utility) *

* Each of the four items must be certified YES or NO. Each item need not be certified by both officers. The items being certified by the officer should be indicated in the appropriate area to the left of the signature.

NOTICE: Section 837.06, Florida Statutes, provides that any person who knowingly makes a false statement in writing with the intent to mislead a public servant in the performance of his duty shall be guilty of a misdemeanor of the second degree.

ANNUAL REPORT OF

YEAR OF REPORT
December 31, 2020

Ni Florida, Inc.
(Exact Name of Utility)

County: Pasco & Lee

List below the exact mailing address of the utility for which normal correspondence should be sent:

1710 Woodcreek Farms Rd
Elgin, SC 29045

Telephone: (803) 995-5072

E Mail Address: csorensen@swwc.com

WEB Site: www.swwc.com

Sunshine State One-Call of Florida, Inc. Member Number HUI891 & TV1036

Name and address of person to whom correspondence concerning this report should be addressed:

Craig Sorensen, President
1710 Woodcreek Farms Rd
Elgin, SC 29045

Telephone: (803) 995-5072

List below the address of where the utility's books and records are located:

1710 Woodcreek Farms Rd
Elgin, SC 29045

Telephone: (803) 995-5068

List below any groups auditing or reviewing the records and operations:

Pricewaterhouse Cooper LLP
1000 Louisiana, Suite 5800
Houston, TX 77002

Date of original organization of the utility: 11/16/07

Check the appropriate business entity of the utility as filed with the Internal Revenue Service

Individual Partnership Sub S Corporation 1120 Corporation

List below every corporation or person owning or holding directly or indirectly 5% or more of the voting securities of the utility:

	Name	Percent Ownership
1.	<u>Florida Utility Systems, Inc.</u>	<u>100%</u>
2.	<u></u>	<u></u>
3.	<u></u>	<u></u>
4.	<u></u>	<u></u>
5.	<u></u>	<u></u>
6.	<u></u>	<u></u>
7.	<u></u>	<u></u>
8.	<u></u>	<u></u>
9.	<u></u>	<u></u>
10.	<u></u>	<u></u>

COMPANY PROFILE

Provide a brief narrative company profile which covers the following areas:

- A. Brief company history.
- B. Public services rendered.
- C. Major goals and objectives.
- D. Major operating divisions and functions.
- E. Current and projected growth patterns.
- F. Major transactions having a material effect on operations.

A. Ni Florida, LLC, a Delaware Corporation, was incorporated in 2007. The Company purchased the assets of Hudson Utilities, Inc. on May 5, 2008 and Tamiami Village Water Company on September 5, 2008. Ni Pacolet Milliken Utilities, LLC purchased Ni Florida, LLC on August 8, 2015. The ownership of the utility was transferred from Ni Pacolet Milliken, LLC to Florida Utility Systems, Inc. by Commission Order No. PSC-2021-0073-FOF-WS, issued February 8, 2021 in Docket No. 20200221-WS. Ni Florida, LLC was converted to a corporation on 3/2/2021, and the name changed to Ni Florida, Inc. The company provides sewage collection services in Pasco County and water distribution service in Lee County.

B. Water distribution (Tamiami Village Water Company) - water is purchased from Lee County. Sewage collection (Hudson Utilities) - Sewage treatment is purchased from Pasco County.

C. To provide water distribution and wastewater collection throughout the company's service areas and to earn a fair rate of return for the Company's owners.

D. Tamiami Village Water Company -- Water distribution
Hudson Utilities -- Sewage collection

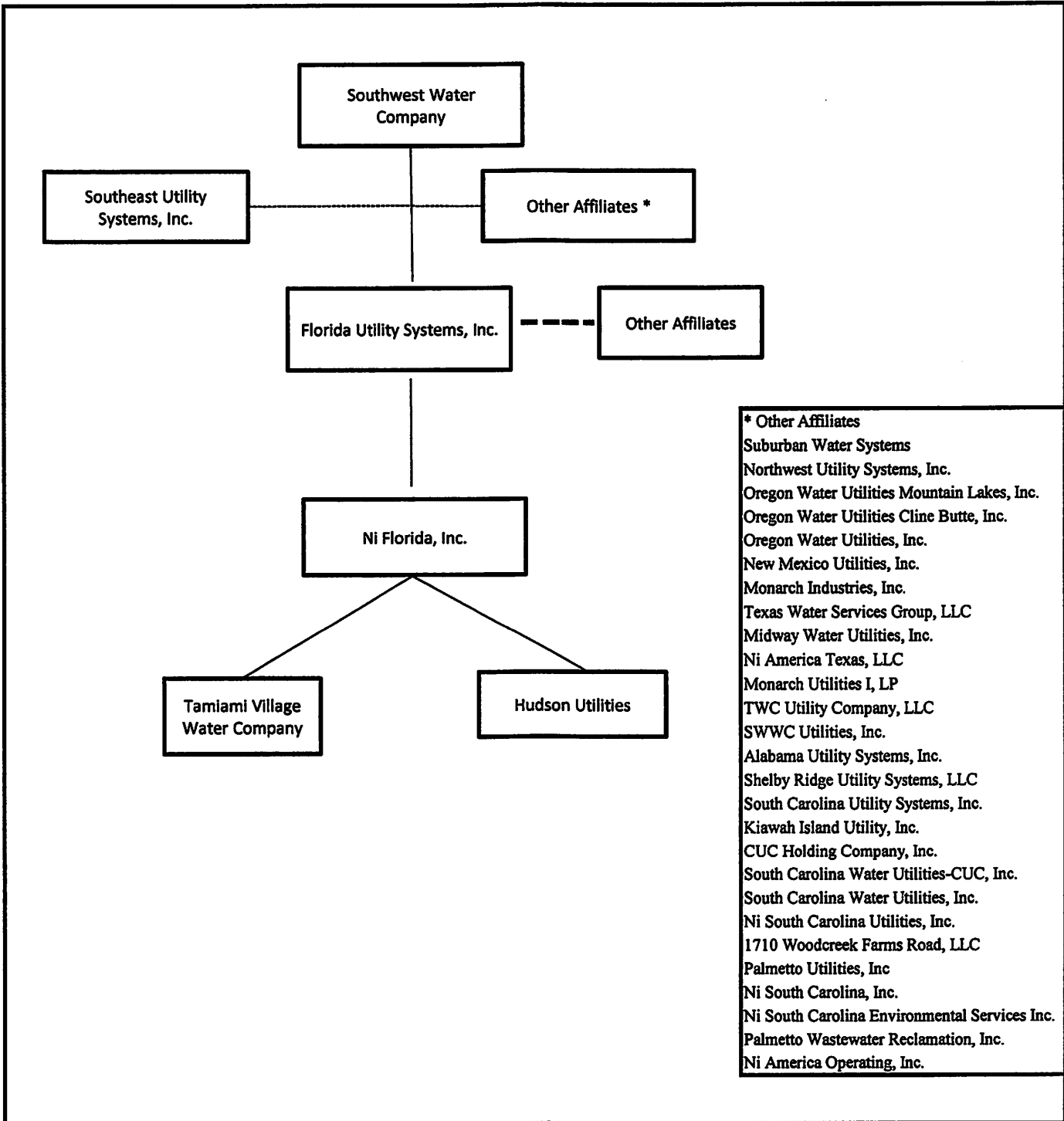
E. The Company expects to add less than 50 new connections annually.

F. None

PARENT / AFFILIATE ORGANIZATION CHART

Current as of December 31, 2020

Complete below an organizational chart that shows all parents, subsidiaries and affiliates of the utility.
 The chart must also show the relationship between the utility and affiliates listed on E-7, E-10(a) and E-10(b).



UTILITY NAME: Ni Florida, Inc.

YEAR OF REPORT December 31, 2020
--

COMPENSATION OF OFFICERS

For each officer, list the time spent on respondent as an officer compared to time spent on total business activities and the compensation received as an officer from the respondent.			
NAME (a)	TITLE (b)	% OF TIME SPENT AS OFFICER OF THE UTILITY (c)	OFFICERS' COMPENSATION (d)
Craig Sorensen	President	0.00%	\$ 0
Kirk Michael	Treasurer/CFO	0.00%	\$ 0
Joseph Park	Secretary	0.00%	\$ 0
Joshua Abbotoy	Asst. Secretary	0.00%	\$ 0

*Note: The officers listed assumed officer status in 2021 upon ownership transfer of Ni Florida, LLC to Florida Utility Systems, Inc.; they were not officers for Ni Florida, LLC in 2020 and thus received no compensation in 2020 related to Ni Florida, LLC.

COMPENSATION OF DIRECTORS

For each director, list the number of directors' meetings attended by each director and the compensation received as a director from the respondent.			
NAME (a)	TITLE (b)	NUMBER OF DIRECTORS' MEETINGS ATTENDED (c)	DIRECTORS' COMPENSATION (d)
None			\$

AFFILIATION OF OFFICERS AND DIRECTORS

For each of the officials listed on page E-6, list the principal occupation or business affiliations or connections with any other business or financial organizations, firms, or partnerships. For purposes of this part, an official will be considered to have an affiliation with any business or financial organization, firm or partnership in which he is an officer, director, trustee, partner, or a person exercising similar functions.

NAME (a)	PRINCIPAL OCCUPATION OR BUSINESS AFFILIATION (b)	AFFILIATION OR CONNECTION (c)	NAME AND ADDRESS OF AFFILIATION OR CONNECTION (d)
Craig Sorensen	Operations & Engineering	Officer	1710 Woodcreek Farms Rd. Elgin, SC 29045
Kirk Michael	Accounting/Finance	Officer	12535 Reed Road Sugar Land, TX 77478
Joseph Park	General Counsel	Officer	1325 N. Grand Avenue, Suite 100 Covina, CA 91724
Joshua Abbotoy	General Counsel	Officer	12535 Reed Road Sugar Land, TX 77478
<p>*All of the above mentioned Officers are affiliated with the following entities:</p>			<p>* Other Affiliates Suburban Water Systems Northwest Utility Systems, Inc. Oregon Water Utilities Mountain Lakes, Inc. Oregon Water Utilities Cline Butte, Inc. Oregon Water Utilities, Inc. New Mexico Utilities, Inc. Monarch Industries, Inc. Texas Water Services Group, LLC Midway Water Utilities, Inc. Ni America Texas, LLC Monarch Utilities I, LP TWC Utility Company, LLC SWWC Utilities, Inc. Alabama Utility Systems, Inc. Shelby Ridge Utility Systems, LLC South Carolina Utility Systems, Inc. Kiawah Island Utility, Inc. CUC Holding Company, Inc. South Carolina Water Utilities-CUC, Inc. South Carolina Water Utilities, Inc. Ni South Carolina Utilities, Inc. 1710 Woodcreek Farms Road, LLC Palmetto Utilities, Inc Ni South Carolina, Inc. Ni South Carolina Environmental Services Inc. Palmetto Wastewater Reclamation, Inc. Ni America Operating, Inc.</p>

THIS PAGE LEFT

BLANK INTENTIONALLY

**FINANCIAL
SECTION**

UTILITY NAME: Ni Florida, Inc.

YEAR OF REPORT December 31, 2020
--

**COMPARATIVE BALANCE SHEET
ASSETS AND OTHER DEBITS**

ACCT. NO. (a)	ACCOUNT NAME (b)	REF. PAGE (c)	PREVIOUS YEAR (d)	CURRENT YEAR (e)
UTILITY PLANT				
101-106	Utility Plant	F-7	\$ 12,195,485	\$ 12,569,171
108-110	Less: Accumulated Depreciation and Amortization	F-8	6,266,544	6,575,319
Net Plant			\$ 5,928,941	\$ 5,993,852
114-115	Utility Plant Acquisition adjustment (Net)	F-7	10,611,940	10,611,940
116 *	Other Utility Plant Adjustments			
Total Net Utility Plant			\$ 16,540,881	\$ 16,605,792
OTHER PROPERTY AND INVESTMENTS				
121	Nonutility Property	F-9	\$	\$
122	Less: Accumulated Depreciation and Amortization			
Net Nonutility Property			\$	\$
123	Investment in Associated Companies	F-10		
124	Utility Investments	F-10		
125	Other Investments	F-10	0	0
126-127	Special Funds	F-10	9,050	9,050
Total Other Property & Investments			\$ 9,050	\$ 9,050
CURRENT AND ACCRUED ASSETS				
131	Cash		\$ 57,691	\$ 596,157
132	Special Deposits	F-9		
133	Other Special Deposits	F-9		
134	Working Funds			
135	Temporary Cash Investments			
141-144	Accounts and Notes Receivable, Less Accumulated Provision for Uncollectible Accounts	F-11	230,331	180,247
145	Accounts Receivable from Associated Companies	F-12	8,857,778	(4,956)
146	Notes Receivable from Associated Companies	F-12	0	0
151-153	Material and Supplies			
161	Stores Expense			
162	Prepayments		18,547	15,371
171	Accrued Interest and Dividends Receivable			
172 *	Rents Receivable			
173 *	Accrued Utility Revenues		60,012	54,304
174	Miscellaneous Current and Accrued Assets	F-12	0	0
Total Current and Accrued Assets			\$ 9,224,359	\$ 841,123

* Not Applicable for Class B Utilities

UTILITY NAME: Ni Florida, Inc.

YEAR OF REPORT December 31, 2020
--

**COMPARATIVE BALANCE SHEET
ASSETS AND OTHER DEBITS**

ACCT. NO. (a)	ACCOUNT NAME (b)	REF. PAGE (c)	PREVIOUS YEAR (d)	CURRENT YEAR (e)
DEFERRED DEBITS				
181	Unamortized Debt Discount & Expense	F-13	\$ 5,462	\$ 0
182	Extraordinary Property Losses	F-13		
183	Preliminary Survey & Investigation Charges		0	0
184	Clearing Accounts			
185 *	Temporary Facilities			
186	Miscellaneous Deferred Debits	F-14	61,808	30,795
187 *	Research & Development Expenditures			
190	Accumulated Deferred Income Taxes			
Total Deferred Debits			\$ 67,270	\$ 30,795
TOTAL ASSETS AND OTHER DEBITS			\$ 25,841,560	\$ 17,486,760

* Not Applicable for Class B Utilities

<p>NOTES TO THE BALANCE SHEET</p> <p>The space below is provided for important notes regarding the balance sheet</p>

UTILITY NAME: Ni Florida, Inc.

YEAR OF REPORT
December 31, 2020

**COMPARATIVE BALANCE SHEET
EQUITY CAPITAL AND LIABILITIES**

ACCT. NO. (a)	ACCOUNT NAME (b)	REF. PAGE (c)	PREVIOUS YEAR (d)	CURRENT YEAR (e)
EQUITY CAPITAL				
201	Common Stock Issued	F-15	\$ _____	\$ _____
204	Preferred Stock Issued	F-15	_____	_____
202,205 *	Capital Stock Subscribed		_____	_____
203,206 *	Capital Stock Liability for Conversion		_____	_____
207 *	Premium on Capital Stock		_____	_____
209 *	Reduction in Par or Stated Value of Capital Stock		_____	_____
210 *	Gain on Resale or Cancellation of Reacquired Capital Stock		_____	_____
211	Other Paid - In Capital		9,344,688	9,344,688
212	Discount On Capital Stock		_____	_____
213	Capital Stock Expense		_____	_____
214-215	Retained Earnings	F-16	399,438	529,838
216	Reacquired Capital Stock		_____	_____
218	Proprietary Capital		_____	_____
219	Accumulated Other Comprehensive Income-SWAP		(571)	0
Total Equity Capital			\$ 9,743,555	\$ 9,874,526
LONG TERM DEBT				
221	Bonds	F-15	_____	_____
222 *	Reacquired Bonds		_____	_____
223	Advances from Associated Companies	F-17	2,985,216	621,317
224	Other Long Term Debt	F-17	2,534,531	0
Total Long Term Debt			\$ 5,519,747	\$ 621,317
CURRENT AND ACCRUED LIABILITIES				
231	Accounts Payable		179,599	105,304
232	Notes Payable	F-18	374,999	0
233	Accounts Payable to Associated Companies	F-18	7,835,764	4,704,046
234	Notes Payable to Associated Companies	F-18	_____	_____
235	Customer Deposits		176,598	197,949
236	Accrued Taxes	W/S-3	184,631	211,554
237	Accrued Interest	F-19	12,391	14,556
238	Accrued Dividends		_____	_____
239	Matured Long Term Debt		_____	_____
240	Matured Interest		_____	_____
241	Miscellaneous Current & Accrued Liabilities	F-20	211,920	189,258
Total Current & Accrued Liabilities			\$ 8,975,902	\$ 5,422,667

* Not Applicable for Class B Utilities

UTILITY NAME: Ni Florida, Inc.

YEAR OF REPORT December 31, 2020
--

**COMPARATIVE BALANCE SHEET
EQUITY CAPITAL AND LIABILITIES**

ACCT. NO. (a)	ACCOUNT NAME (b)	REF. PAGE (c)	PREVIOUS YEAR (d)	CURRENT YEAR (e)
DEFERRED CREDITS				
251	Unamortized Premium On Debt	F-13	\$ _____	\$ _____
252	Advances For Construction	F-20	_____	_____
253	Other Deferred Credits	F-21	_____	_____
255	Accumulated Deferred Investment Tax Credits		_____	_____
Total Deferred Credits			\$ _____	\$ _____
OPERATING RESERVES				
261	Property Insurance Reserve		\$ _____	\$ _____
262	Injuries & Damages Reserve		_____	_____
263	Pensions and Benefits Reserve		_____	_____
265	Miscellaneous Operating Reserves		_____	_____
Total Operating Reserves			\$ _____	\$ _____
CONTRIBUTIONS IN AID OF CONSTRUCTION				
271	Contributions in Aid of Construction	F-22	\$ 4,148,069	\$ 4,232,620
272	Accumulated Amortization of Contributions in Aid of Construction	F-22	(2,545,713)	(2,664,370)
Total Net CIAC			\$ 1,602,356	\$ 1,568,250
ACCUMULATED DEFERRED INCOME TAXES				
281	Accumulated Deferred Income Taxes - Accelerated Depreciation		\$ _____	\$ _____
282	Accumulated Deferred Income Taxes - Liberalized Depreciation		0	0
283	Accumulated Deferred Income Taxes - Other		_____	_____
Total Accumulated Deferred Income Tax			\$ 0	\$ 0
TOTAL EQUITY CAPITAL AND LIABILITIES			\$ 25,841,560	\$ 17,486,760

UTILITY NAME: Ni Florida, Inc.

YEAR OF REPORT
December 31, 2020

COMPARATIVE OPERATING STATEMENT

ACCT. NO. (a)	ACCOUNT NAME (b)	REF. PAGE (c)	PREVIOUS YEAR (d)	CURRENT YEAR * (e)
UTILITY OPERATING INCOME				
400	Operating Revenues	F-3(b)	\$ 2,693,947	\$ 2,654,594
469, 530	Less: Guaranteed Revenue and AFPI	F-3(b)	0	0
Net Operating Revenues			\$ 2,693,947	\$ 2,654,594
401	Operating Expenses	F-3(b)	\$ 2,107,627	\$ 1,913,109
403	Depreciation Expense:	F-3(b)	\$ 323,745	\$ 308,775
	Less: Amortization of CIAC	F-22	111,527	118,657
Net Depreciation Expense			\$ 212,218	\$ 190,118
406	Amortization of Utility Plant Acquisition Adjustment	F-3(b)	0	0
407	Amortization Expense (Other than CIAC)	F-3(b)	0	0
408	Taxes Other Than Income	W/S-3	198,791	195,601
409	Current Income Taxes	W/S-3	(32,051)	44,259
410.1	Deferred Federal Income Taxes	W/S-3	0	0
410.11	Deferred State Income Taxes	W/S-3	0	0
411.1	Provision for Deferred Income Taxes - Credit	W/S-3	0	0
412.1	Investment Tax Credits Deferred to Future Periods	W/S-3	0	0
412.11	Investment Tax Credits Restored to Operating Income	W/S-3	0	0
Utility Operating Expenses			\$ 2,486,585	\$ 2,343,087
Net Utility Operating Income			\$ 207,362	\$ 311,507
469, 530	Add Back: Guaranteed Revenue and AFPI	F-3(b)	0	0
413	Income From Utility Plant Leased to Others		0	0
414	Gains (losses) From Disposition of Utility Property		0	0
420	Allowance for Funds Used During Construction		0	0
Total Utility Operating Income [Enter here and on Page F-3(c)]			\$ 207,362	\$ 311,507

* For each account, Column e should agree with Columns f, g and h on F-3(b)

UTILITY NAME: Ni Florida, Inc.

YEAR OF REPORT December 31, 2020
--

COMPARATIVE OPERATING STATEMENT (Cont'd)

WATER SCHEDULE W-3 * (f)	WASTEWATER SCHEDULE S-3 * (g)	OTHER THAN REPORTING SYSTEMS (h)
\$ <u>273,369</u> 0	\$ <u>2,381,225</u> 0	\$ <u>0</u>
\$ <u>273,369</u>	\$ <u>2,381,225</u>	\$ <u>0</u>
\$ 214,982	\$ 1,637,634	\$ 60,493
<u>20,549</u> 0	<u>288,226</u> 118,657	_____
\$ <u>20,549</u>	\$ <u>169,569</u>	\$ <u>0</u>
0 0 12,302 6,364 0 0 0 0 0	0 0 183,299 98,158 0 0 0 0 0	_____ _____ 0 (60,263) _____ _____ _____ _____ _____
\$ <u>254,197</u>	\$ <u>2,088,660</u>	\$ <u>230</u>
\$ <u>19,172</u>	\$ <u>292,565</u>	\$ <u>(230)</u>
0 0 0 0	0 0 0 0	_____ _____ 0 _____
\$ <u>19,172</u>	\$ <u>292,565</u>	\$ <u>(230)</u>

* Total of Schedules W-3 / S-3 for all rate groups.

UTILITY NAME: Ni Florida, Inc.

YEAR OF REPORT
December 31, 2020

COMPARATIVE OPERATING STATEMENT (Cont'd)

ACCT. NO. (a)	ACCOUNT NAME (b)	REF. PAGE (c)	PREVIOUS YEAR (d)	CURRENT YEAR (e)
Total Utility Operating Income [from page F-3(a)]			\$ 207,362	\$ 311,507
OTHER INCOME AND DEDUCTIONS				
415	Revenues-Merchandising, Jobbing, and Contract Deductions		\$	\$
416	Costs & Expenses of Merchandising Jobbing, and Contract Work			
419	Interest and Dividend Income		2,836	1,825
421	Nonutility Income			
426	Miscellaneous Nonutility Expenses		0	0
Total Other Income and Deductions			\$ 2,836	\$ 1,825
TAXES APPLICABLE TO OTHER INCOME				
408.2	Taxes Other Than Income		\$	\$
409.2	Income Taxes			
410.2	Provision for Deferred Income Taxes			
411.2	Provision for Deferred Income Taxes - Credit		439,357	0
412.2	Investment Tax Credits - Net			
412.3	Investment Tax Credits Restored to Operating Income			
Total Taxes Applicable To Other Income			\$ 439,357	\$ 0
INTEREST EXPENSE				
427	Interest Expense	F-19	\$ 293,991	\$ 172,012
428	Amortization of Debt Discount & Expense	F-13	10,641	10,920
429	Amortization of Premium on Debt	F-13	0	0
Total Interest Expense			\$ 304,632	\$ 182,932
EXTRAORDINARY ITEMS				
433	Extraordinary Income		\$	\$
434	Extraordinary Deductions			
409.3	Income Taxes, Extraordinary Items			
Total Extraordinary Items			\$ 0	\$ 0
NET INCOME			\$ 344,923	\$ 130,400

Explain Extraordinary Income:

UTILITY NAME: Ni Florida, Inc.

YEAR OF REPORT
December 31, 2020

SCHEDULE OF YEAR END RATE BASE

ACCT. NO. (a)	ACCOUNT NAME (b)	REF. PAGE (c)	WATER UTILITY (d)	WASTEWATER UTILITY (e)
101	Utility Plant In Service	F-7	\$ 650,790	\$ 11,918,381
	Less:			
	Nonused and Useful Plant (1)			
108	Accumulated Depreciation	F-8	415,930	6,159,389
110	Accumulated Amortization	F-8		
271	Contributions in Aid of Construction	F-22	110,815	4,121,805
252	Advances for Construction	F-20		
Subtotal			\$ 124,045	\$ 1,637,187
272	Add: Accumulated Amortization of Contributions in Aid of Construction	F-22	110,815	2,553,555
Subtotal			\$ 234,860	\$ 4,190,742
114	Plus or Minus: Acquisition Adjustments (2)	F-7	1,530,758	8,947,690
115	Accumulated Amortization of Acquisition Adjustments (2)	F-7	0	0
	Working Capital Allowance (3)		96,669	228,738
	Other (Specify):			
	Acquisition Adjustment not approved by the commission.		(1,530,758)	(8,947,690)
RATE BASE			\$ 331,529	\$ 4,419,480
NET UTILITY OPERATING INCOME			\$ 19,172	\$ 292,565
ACHIEVED RATE OF RETURN (Operating Income / Rate Base)			5.78%	6.62%

NOTES :

- (1) Estimate based on the methodology used in the last rate proceeding.
- (2) Include only those Acquisition Adjustments that have been approved by the Commission.
- (3) Calculation consistent with last rate proceeding.
In absence of a rate proceeding, Class A utilities will use the Balance Sheet Method and Class B Utilities will use the One-eighth Operating and Maintenance Expense Method.

UTILITY NAME: Ni Florida, Inc.

YEAR OF REPORT December 31, 2020
--

**SCHEDULE OF CURRENT COST OF CAPITAL
CONSISTENT WITH THE METHODOLOGY USED IN THE LAST RATE PROCEEDING (1)**

CLASS OF CAPITAL (a)	DOLLAR AMOUNT (2) (b)	PERCENTAGE OF CAPITAL (c)	ACTUAL COST RATES (3) (d)	WEIGHTED COST (c x d) (e)
Common Equity	\$ 9,874,526	92.34%	9.22%	8.51%
Preferred Stock	0	0.00%		0.00%
Long Term Debt	621,317	5.81%	4.50%	0.26%
Customer Deposits	197,949	1.85%	2.00%	0.04%
Tax Credits - Zero Cost	0	0.00%		0.00%
Tax Credits - Weighted Cost	0	0.00%		0.00%
Deferred Income Taxes	0	0.00%		0.00%
Other (Explain)	0	0.00%		0.00%
	0	0.00%		0.00%
Total	\$ 10,693,792	100.00%		8.81%

(1) If the utility's capital structure is not used, explain which capital structure is used.

(2) Should equal amounts on Schedule F-6, Column (g).

(3) Mid-point of the last authorized Return On Equity or current leverage formula if none has been established.

Must be calculated using the same methodology used in the last rate proceeding using current annual report year end amounts and cost rates.

APPROVED RETURN ON EQUITY

Current Commission Return on Equity:	<u>9.22%</u>
Commission order approving Return on Equity:	<u>Order No. PSC-16-0525-PAA-WS</u>

APPROVED AFUDC RATE

COMPLETION ONLY REQUIRED IF AFUDC WAS CHARGED DURING YEAR

Current Commission Approved AFUDC rate:	<u>N/A</u>
Commission order approving AFUDC rate:	<u>_____</u>

If any utility capitalized any charge in lieu of AFUDC (such as interest only), state the basis of the charge, an explanation as to why AFUDC was not charged and the percentage capitalized.

UTILITY NAME:

Ni Florida, Inc

YEAR OF REPORT December 31, 2020
--

**SCHEDULE OF CAPITAL STRUCTURE ADJUSTMENTS
CONSISTENT WITH THE METHODOLOGY USED IN THE LAST RATE PROCEEDING**

CLASS OF CAPITAL (a)	PER BOOK BALANCE (b)	NON-UTILITY ADJUSTMENTS (c)	NON-JURISDICTIONAL ADJUSTMENTS (d)	OTHER (1) ADJUSTMENTS SPECIFIC (e)	OTHER (1) ADJUSTMENTS PRO RATA (f)	CAPITAL STRUCTURE (g)
Common Equity	\$ 9,874,526	\$ _____	\$ _____	\$ _____	\$ _____	\$ 9,874,526
Preferred Stock	_____	_____	_____	_____	_____	0
Long Term Debt	621,317	_____	_____	_____	_____	621,317
Customer Deposits	197,949	_____	_____	_____	_____	197,949
Tax Credits - Zero Cost	_____	_____	_____	_____	_____	0
Tax Credits - Weighted Cost	_____	_____	_____	_____	_____	0
Deferred Inc. Taxes	_____	_____	_____	_____	_____	0
Other (Explain)	_____	_____	_____	_____	_____	0
Total	\$ <u>10,693,792</u>	\$ <u>0</u>	\$ <u>0</u>	\$ <u>0</u>	\$ <u>0</u>	\$ <u>10,693,792</u>

(1) Explain below all adjustments made in Columns (e) and (f):

UTILITY NAME: Ni Florida, Inc.

YEAR OF REPORT December 31, 2020
--

**UTILITY PLANT
ACCOUNTS 101 - 106**

ACCT. NO. (a)	DESCRIPTION (b)	WATER (c)	WASTEWATER (d)	OTHER THAN REPORTING SYSTEMS (e)	TOTAL (f)
101	Plant Accounts: Utility Plant In Service	\$ 650,790	\$ 11,918,381	\$	\$ 12,569,171
102	Utility Plant Leased to Other	_____	_____	_____	0
103	Property Held for Future Use	_____	_____	_____	0
104	Utility Plant Purchased or Sold	_____	_____	_____	0
105	Construction Work in Progress	0	0	_____	0
106	Completed Construction Not Classified	_____	_____	_____	0
	Total Utility Plant	\$ <u>650,790</u>	\$ <u>11,918,381</u>	\$ <u>0</u>	\$ <u>12,569,171</u>

**UTILITY PLANT ACQUISITION ADJUSTMENTS
ACCOUNTS 114 AND 115**

Report each acquisition adjustment and related accumulated amortization separately.
For any acquisition adjustments approved by the Commission, include the Order Number.

ACCT. NO. (a)	DESCRIPTION (b)	WATER (c)	WASTEWATER (d)	OTHER THAN REPORTING SYSTEMS (e)	TOTAL (f)
114	Acquisition Adjustment	\$ 1,530,758	\$ 8,947,690	\$ 133,492	\$ 10,611,940
		_____	_____	_____	0
		_____	_____	_____	0
		_____	_____	_____	0
	Total Plant Acquisition Adjustments	\$ <u>1,530,758</u>	\$ <u>8,947,690</u>	\$ <u>133,492</u>	\$ <u>10,611,940</u>
115	Accumulated Amortization	\$	\$	\$	\$ 0
		_____	_____	_____	0
		_____	_____	_____	0
		_____	_____	_____	0
	Total Accumulated Amortization	\$ <u>0</u>	\$ <u>0</u>	\$ <u>0</u>	\$ <u>0</u>
	Net Acquisition Adjustments	\$ <u>1,530,758</u>	\$ <u>8,947,690</u>	\$ <u>133,492</u>	\$ <u>10,611,940</u>

UTILITY NAME: NI Florida, Inc.

YEAR OF REPORT December 31, 2020
--

ACCUMULATED DEPRECIATION (ACCT. 108) AND AMORTIZATION (ACCT. 110)

DESCRIPTION (a)	WATER (b)	WASTEWATER (c)	OTHER THAN REPORTING SYSTEMS (d)	TOTAL (e)
ACCUMULATED DEPRECIATION				
Account 108				
Balance first of year	\$ 395,381	\$ 5,871,163	\$	\$ 6,266,544
Credit during year:				
Accruals charged to:				
Account 108.1 (1)	\$ 20,549	\$ 288,226	\$	\$ 308,775
Account 108.2 (2)	_____	_____	_____	0
Account 108.3 (2)	_____	_____	_____	0
Other Accounts (specify):	_____	_____	_____	0
_____	_____	_____	_____	0
Salvage	_____	_____	_____	0
Other Credits (Specify):	_____	_____	_____	0
Audit Adjustment	0	0	_____	0
Total Credits	\$ 20,549	\$ 288,226	\$ 0	\$ 308,775
Debits during year:				
Book cost of plant retired	_____	_____	_____	0
Cost of Removal	_____	_____	_____	0
Other Debits (specify):	_____	_____	_____	0
Audit Adjustment	_____	_____	_____	0
Total Debits	\$ 0	\$ 0	\$ 0	\$ 0
Balance end of year	<u>\$ 415,930</u>	<u>\$ 6,159,389</u>	\$ 0	<u>\$ 6,575,319</u>
ACCUMULATED AMORTIZATION				
Account 110				
Balance first of year	\$ 0	\$	\$	\$ 0
Credit during year:				
Accruals charged to:				
Account 110.2 (3)	\$ _____	\$ _____	\$ _____	\$ 0
Other Accounts (specify):	_____	_____	_____	0
_____	_____	_____	_____	0
Total credits	\$ 0	\$ 0	\$ 0	\$ 0
Debits during year:				
Book cost of plant retired	_____	_____	_____	0
Other debits (specify):	_____	_____	_____	0
_____	_____	_____	_____	0
Total Debits	\$ 0	\$ 0	\$ 0	\$ 0
Balance end of year	<u>\$ 0</u>	<u>\$ 0</u>	<u>\$ 0</u>	<u>\$ 0</u>

- (1) Account 108 for Class B utilities.
- (2) Not applicable for Class B utilities.
- (3) Account 110 for Class B utilities.

UTILITY NAME: Ni Florida, Inc.

YEAR OF REPORT December 31, 2020
--

**REGULATORY COMMISSION EXPENSE
AMORTIZATION OF RATE CASE EXPENSE (ACCOUNTS 666 AND 766)**

DESCRIPTION OF CASE (DOCKET NO.) (a)	EXPENSE INCURRED DURING YEAR (b)	CHARGED OFF DURING YEAR	
		ACCT. (d)	AMOUNT (e)
Hudson - rate case	\$ 18,779		\$
Tamiami - rate case	4,992		
Total	\$ <u>23,771</u>		\$ <u>0</u>

NONUTILITY PROPERTY (ACCOUNT 121)

Report separately each item of property with a book cost of \$25,000 or more included in Account 121.

Other Items may be grouped by classes of property.

DESCRIPTION (a)	BEGINNING YEAR (b)	ADDITIONS (c)	REDUCTIONS (d)	ENDING YEAR BALANCE (e)
N/A	\$	\$	\$	\$ 0
				0
				0
				0
Total Nonutility Property	\$ <u>0</u>	\$ <u>0</u>	\$ <u>0</u>	\$ <u>0</u>

SPECIAL DEPOSITS (ACCOUNTS 132 AND 133)

Report hereunder all special deposits carried in Accounts 132 and 133.

DESCRIPTION OF SPECIAL DEPOSITS (a)	YEAR END BOOK COST (b)
SPECIAL DEPOSITS (Account 132):	
	\$
Total Special Deposits	\$ <u>0</u>
OTHER SPECIAL DEPOSITS (Account 133):	
	\$
Total Other Special Deposits	\$ <u>0</u>

UTILITY NAME: Ni Florida, Inc.

YEAR OF REPORT December 31, 2020
--

INVESTMENTS AND SPECIAL FUNDS
ACCOUNTS 123 - 127

Report hereunder all investments and special funds carried in Accounts 123 through 127.

DESCRIPTION OF SECURITY OR SPECIAL FUND (a)	FACE OR PAR VALUE (b)	YEAR END BOOK COST (c)
INVESTMENT IN ASSOCIATED COMPANIES (Account 123): <u>N/A</u> _____ _____ _____ _____	\$ _____ _____ _____ _____ _____	\$ _____ _____ _____ _____ _____
Total Investment in Associated Companies		\$ <u>0</u>
UTILITY INVESTMENTS (Account 124): <u>N/A</u> _____ _____ _____ _____	\$ _____ _____ _____ _____ _____	\$ _____ _____ _____ _____ _____
Total Utility Investment		\$ <u>0</u>
OTHER INVESTMENTS (Account 125): <u>N/A</u> _____ _____ _____ _____	\$ _____ _____ _____ _____ _____	\$ <u>0</u> _____ _____ _____ _____
Total Other Investment		\$ <u>0</u>
SPECIAL FUNDS (Class A Utilities: Accounts 126 and 127; Class B Utilities: Account 127): <u>Wastewater - Other Special Funds -- Security Deposits</u> _____ _____ _____ _____	_____ _____ _____ _____	\$ <u>9,050</u> _____ _____ _____ _____
Total Special Funds		\$ <u>9,050</u>

UTILITY NAME: Ni Florida, Inc.

YEAR OF REPORT December 31, 2020
--

ACCOUNTS AND NOTES RECEIVABLE - NET
ACCOUNTS 141 - 144

Report hereunder all accounts and notes receivable included in Accounts 141, 142, and 144. Amounts included in
 Amounts included in Accounts 142 and 144 should be listed individually.

DESCRIPTION (a)		TOTAL (b)
CUSTOMER ACCOUNTS RECEIVABLE (Account 141):		
Water	\$ 23,551	
Wastewater	491,677	
Total Customer Accounts Receivable		\$ 515,228
OTHER ACCOUNTS RECEIVABLE (Account 142):		
PASCO County Commissioner - Performance Guarantee Fee Refund	\$ 0	
Total Other Accounts Receivable		\$ 0
NOTES RECEIVABLE (Account 144):		
_____	\$ _____	
_____	_____	
_____	_____	
Total Notes Receivable		\$ 0
Total Accounts and Notes Receivable		\$ 515,228
ACCUMULATED PROVISION FOR UNCOLLECTIBLE ACCOUNTS (Account 143)		
Balance first of year	\$ 298,383	
Add: Provision for uncollectibles for current year	\$ 36,598	
Total Additions		\$ 36,598
Deduct accounts written off during year:		
Utility Accounts	0	
Others	_____	
Total accounts written off		\$ 0
Balance end of year		\$ 334,981
TOTAL ACCOUNTS AND NOTES RECEIVABLE - NET		\$ 180,247

UTILITY NAME: Ni Florida, Inc.

YEAR OF REPORT
December 31, 2020

**UNAMORTIZED DEBT DISCOUNT AND EXPENSE AND PREMIUM ON DEBT
ACCOUNTS 181 AND 251**

Report the net discount and expense or premium separately for each security issue.

DESCRIPTION (a)	AMOUNT WRITTEN OFF DURING YEAR (b)	YEAR END BALANCE (c)
UNAMORTIZED DEBT DISCOUNT AND EXPENSE (Account 181):		
Bank of America Loan	\$ (5,462)	\$ 0
_____	_____	_____
_____	_____	_____
_____	_____	_____
Total Unamortized Debt Discount and Expense	\$ (5,462)	\$ 0
UNAMORTIZED PREMIUM ON DEBT (Account 251):		
N/A	\$ _____	\$ _____
_____	_____	_____
_____	_____	_____
_____	_____	_____
Total Unamortized Premium on Debt	\$ 0	\$ 0

**EXTRAORDINARY PROPERTY LOSSES
ACCOUNT 182**

Report each item separately.

DESCRIPTION (a)	TOTAL (b)
N/A	\$ _____
_____	_____
_____	_____
Total Extraordinary Property Losses	\$ 0

UTILITY NAME: Ni Florida, Inc.

YEAR OF REPORT December 31, 2020
--

**MISCELLANEOUS DEFERRED DEBITS
ACCOUNT 186**

DESCRIPTION - Provide itemized listing (a)	AMOUNT WRITTEN OFF DURING YEAR (b)	YEAR END BALANCE (c)
DEFERRED RATE CASE EXPENSE (Class A Utilities: Account 186.1)		
Hudson - Deferred Rate Case Expense	\$ (18,779)	\$ 4,676
Tamiami - Deferred Rate Case Expense	(4,991)	1,169
Ni Florida - Deferred Rate Case Expense	4,950	24,950
Total Deferred Rate Case Expense	\$ (18,820)	\$ 30,795
OTHER DEFERRED DEBITS (Class A Utilities: Account 186.2):		
Ni Florida - CoBank Membership	\$ (12,193)	\$ 0
Total Other Deferred Debits	\$ (12,193)	\$ 0
REGULATORY ASSETS (Class A Utilities: Account 186.3):		
N/A	\$	
Total Regulatory Assets	\$ 0	\$ 0
TOTAL MISCELLANEOUS DEFERRED DEBITS	\$ (31,013)	\$ 30,795

UTILITY NAME: Ni Florida, Inc.

YEAR OF REPORT December 31, 2020
--

**CAPITAL STOCK
ACCOUNTS 201 AND 204***

DESCRIPTION (a)	RATE (b)	TOTAL (c)
COMMON STOCK		
Par or stated value per share	None	\$ 0
Shares authorized		
Shares issued and outstanding		
Total par value of stock issued	%	\$
Dividends declared per share for year	%	\$
PREFERRED STOCK		
Par or stated value per share	None	\$ 0
Shares authorized		
Shares issued and outstanding		
Total par value of stock issued	%	\$
Dividends declared per share for year	%	\$

* Account 204 not applicable for Class B utilities.

**BONDS
ACCOUNT 221**

DESCRIPTION OF OBLIGATION (INCLUDING DATE OF ISSUE AND DATE OF MATURITY) (a)	INTEREST		PRINCIPAL AMOUNT PER BALANCE SHEET (d)
	ANNUAL RATE (b)	FIXED OR VARIABLE * (c)	
N/A	%		\$
	%		
	%		
	%		
	%		
	%		
	%		
	%		
	%		
	%		
	%		
Total			\$ 0

* For variable rate obligations, provide the basis for the rate. (i.e. prime + 2%, etc.)

UTILITY NAME: Ni Florida, Inc.

YEAR OF REPORT December 31, 2020
--

STATEMENT OF RETAINED EARNINGS

1. Dividends should be shown for each class and series of capital stock. Show amounts as dividends per share.
2. Show separately the state and federal income tax effect of items shown in Account No. 439.

ACCT. NO. (a)	DESCRIPTION (b)	AMOUNTS (c)
215	Unappropriated Retained Earnings: Balance Beginning of Year	\$ 399,438
439	Changes to Account: Adjustments to Retained Earnings (requires Commission approval prior to use): Credits: _____ _____	\$ _____ _____
	Total Credits:	\$ 0
	Debits: Accumulated Retained Earnings at date of purchase by Ni Pacolet Milliken Utilities, LLC _____	\$ _____ _____
	Total Debits:	\$ 0
435	Balance Transferred from Income	\$ 130,400
436	Appropriations of Retained Earnings: _____ _____	_____ _____
	Total Appropriations of Retained Earnings	\$ 0
437	Dividends Declared: Preferred Stock Dividends Declared _____	_____ _____
438	Common Stock Dividends Declared _____	_____ _____
	Total Dividends Declared	\$ 0
215	Year end Balance	\$ 529,838
214	Appropriated Retained Earnings (state balance and purpose of each appropriated amount at year end): _____ _____ _____	_____ _____ _____
214	Total Appropriated Retained Earnings	\$ 0
Total Retained Earnings		\$ 529,838
Notes to Statement of Retained Earnings:		

UTILITY NAME: Ni Florida, Inc.

YEAR OF REPORT December 31, 2020
--

**ADVANCES FROM ASSOCIATED COMPANIES
ACCOUNT 223**

Report each advance separately.

DESCRIPTION (a)	TOTAL (b)
Advances from Associated Co - Ni Pacolet Milliken	\$ 621,317
Total	\$ 621,317

**OTHER LONG-TERM DEBT
ACCOUNT 224**

DESCRIPTION OF OBLIGATION (INCLUDING DATE OF ISSUE AND DATE OF MATURITY) (a)	INTEREST		PRINCIPAL AMOUNT PER BALANCE SHEET (d)
	ANNUAL RATE (b)	FIXED OR VARIABLE * (c)	
Bank of America Loan	* %	Variable *	\$ 0
	%		
	%		
	%		
	%		
	%		
	%		
	%		
	%		
	%		
	%		
	%		
	%		
	%		
	%		
	%		
	%		
	%		
	%		
	%		
Total			\$ 0

* For variable rate obligations, provide the basis for the rate. (i.e.. prime + 2%, etc.)

UTILITY NAME: Ni Florida, Inc.

YEAR OF REPORT December 31, 2020
--

**NOTES PAYABLE
ACCOUNTS 232 AND 234**

DESCRIPTION OF OBLIGATION (INCLUDING DATE OF ISSUE AND DATE OF MATURITY) (a)	INTEREST		PRINCIPAL AMOUNT PER BALANCE SHEET (d)
	ANNUAL RATE (b)	FIXED OR VARIABLE * (c)	
NOTES PAYABLE (Account 232): N/A	%		\$ 0
	%		
	%		
	%		
	%		
	%		
	%		
	%		
	%		
	%		
Total Account 232			\$ <u>0</u>
NOTES PAYABLE TO ASSOC. COMPANIES (Account 234): N/A	%		\$ 0
	%		
	%		
	%		
	%		
	%		
	%		
	%		
	%		
Total Account 234			\$ <u>0</u>

* For variable rate obligations, provide the basis for the rate. (i.e.. prime + 2%, etc.)

**ACCOUNTS PAYABLE TO ASSOCIATED COMPANIES
ACCOUNT 233**

Report each account payable separately.

DESCRIPTION (a)	TOTAL (b)
Ni Florida, Tamiami, and Hudson Utilities to Ni America Operating, LLC	\$ 4,522,512
Ni Florida to Ni Pacolet Milliken Utilities, LLC	181,534
Total	\$ <u>4,704,046</u>

UTILITY NAME: Ni Florida, Inc.

YEAR OF REPORT
December 31, 2020

**ACCRUED INTEREST AND EXPENSE
ACCOUNTS 237 AND 427**

DESCRIPTION OF DEBIT (a)	BALANCE BEGINNING OF YEAR (b)	INTEREST ACCRUED DURING YEAR		INTEREST PAID DURING YEAR (e)	BALANCE END OF YEAR (f)
		ACCT. DEBIT (c)	AMOUNT (d)		
ACCOUNT NO. 237.1 - Accrued Interest on Long Term Debt					
Interest Expense - Ni Florida, LLC	\$ 0	427	\$ 168,230	\$ 168,230	\$ 0
Customer Tap Fee Deposits - Hudson	0	427	0	0	0
			0	0	0
Total Account 237.1	\$ 0		\$ 168,230	\$ 168,230	\$ 0
ACCOUNT NO. 237.2 - Accrued Interest on Other Liabilities					
Customer Deposits - Hudson	\$ 9,895	427	\$ 3,358	\$ 1,452	\$ 11,801
Customers Deposits - Tamiami	2,496	427	423	164	2,755
	0				0
Total Account 237.2	\$ 12,391		\$ 3,782	\$ 1,617	\$ 14,556
Total Account 237 (1)	\$ 12,391		\$ 172,012	\$ 169,847	\$ 14,556
INTEREST EXPENSED:					
Total accrual Account 237		237	\$ 172,012		
Less Capitalized Interest Portion of AFUDC:					
Net Interest Expensed to Account No. 427 (2)			\$ 172,012		

(1) Must agree to F-2 (a), Beginning and Ending Balance of Accrued Interest.

(2) Must agree to F-3 (c), Current Year Interest Expense

UTILITY NAME: Ni Florida, Inc.

YEAR OF REPORT December 31, 2020
--

**MISCELLANEOUS CURRENT AND ACCRUED LIABILITIES
ACCOUNT 241**

DESCRIPTION - Provide itemized listing (a)	BALANCE END OF YEAR (b)
Hudson: Misc Liabilities - Deferred Revenue	\$ 92,987
Hudson: Misc Liabilities - Accrued Expenses	86,684
Hudson: Escheatment	3,983
Tamiami: Misc Liabilities - Accrued Expenses	4,308
Tamiami: Escheatment	1,052
Ni Florida: Escheatment	245
Total Miscellaneous Current and Accrued Liabilities	\$ <u>189,258</u>

**ADVANCES FOR CONSTRUCTION
ACCOUNT 252**

NAME OF PAYOR * (a)	BALANCE BEGINNING OF YEAR (b)	DEBITS		CREDITS (e)	BALANCE END OF YEAR (f)
		ACCT. DEBIT (c)	AMOUNT (d)		
None	\$		\$	\$	\$ 0
					0
					0
					0
					0
					0
					0
					0
					0
Total	\$ <u>0</u>		\$ <u>0</u>	\$ <u>0</u>	\$ <u>0</u>

* Report advances separately by reporting group, designating water or wastewater in column (a).

UTILITY NAME: Ni Florida, Inc.

YEAR OF REPORT December 31, 2020
--

**OTHER DEFERRED CREDITS
ACCOUNT 253**

DESCRIPTION - Provide itemized listing (a)	AMOUNT WRITTEN OFF DURING YEAR (b)	YEAR END BALANCE (c)
REGULATORY LIABILITIES (Class A Utilities: Account 253.1):		
N/A	\$ _____	\$ _____
_____	_____	_____
_____	_____	_____
Total Regulatory Liabilities	\$ <u>_____</u>	\$ <u>_____</u>
OTHER DEFERRED LIABILITIES (Class A Utilities: Account 253.2):		
N/A	\$ _____	\$ _____
_____	_____	_____
_____	_____	_____
_____	_____	_____
_____	_____	_____
_____	_____	_____
Total Other Deferred Liabilities	\$ <u>_____</u>	\$ <u>_____</u>
TOTAL OTHER DEFERRED CREDITS	\$ <u>_____</u>	\$ <u>_____</u>

UTILITY NAME: Ni Florida, Inc.

YEAR OF REPORT December 31, 2020
--

**CONTRIBUTIONS IN AID OF CONSTRUCTION
ACCOUNT 271**

DESCRIPTION (a)	WATER (W-7) (b)	WASTEWATER (S-7) (c)	W & WW OTHER THAN SYSTEM REPORTING (d)	TOTAL (e)
Balance first of year	\$ <u>110,815</u>	\$ <u>4,037,254</u>	\$ _____	\$ <u>4,148,069</u>
Add credits during year:	\$ <u>0</u>	\$ <u>84,551</u>	\$ _____	\$ <u>84,551</u>
Less debit charged during the year	\$ <u>0</u>	\$ <u>0</u>	\$ _____	\$ <u>0</u>
Total Contribution In Aid of Construction	\$ <u>110,815</u>	\$ <u>4,121,805</u>	\$ <u>0</u>	\$ <u>4,232,620</u>

**ACCUMULATED AMORTIZATION OF CONTRIBUTIONS IN AID OF CONSTRUCTION
ACCOUNT 272**

DESCRIPTION (a)	WATER (W-8(a)) (b)	WASTEWATER (S-8(a)) (c)	W & WW OTHER THAN SYSTEM REPORTING (d)	TOTAL (e)
Balance first of year	\$ <u>110,815</u>	\$ <u>2,434,898</u>	\$ _____	\$ <u>2,545,713</u>
Debits during the year:	\$ <u>0</u>	\$ <u>118,657</u>	\$ _____	\$ <u>118,657</u>
Credits during the year	\$ <u>0</u>	\$ _____	\$ _____	\$ <u>0</u>
Total Accumulated Amortization of Contributions In Aid of Construction	\$ <u>110,815</u>	\$ <u>2,553,555</u>	\$ <u>0</u>	\$ <u>2,664,370</u>

UTILITY NAME: Ni Florida, Inc.

YEAR OF REPORT December 31, 2020
--

RECONCILIATION OF REPORTED NET INCOME WITH TAXABLE INCOME FOR FEDERAL INCOME TAXES (UTILITY OPERATIONS)

- The reconciliation should include the same detail as furnished on Schedule M-1 of the federal tax return for the year. The reconciliation shall be submitted even though there is no taxable income for the year. Descriptions should clearly indicate the nature of each reconciling amount and show the computations of all tax accruals.
- If the utility is a member of a group which files a consolidated federal tax return, reconcile reported net income with taxable net income as if a separate return were to be filed, indicating intercompany amounts to be eliminated in such consolidated return. State names of group members, tax assigned to each group member, and basis of allocation, assignments or sharing of the consolidated tax among the group members.

DESCRIPTION (a)	REF. NO. (b)	AMOUNT (c)
Net income for the year	F-3(c)	\$ 130,400
Reconciling items for the year:		
Taxable income not reported on books:		
_____		_____
_____		_____
_____		_____
Deductions recorded on books not deducted for return:		
_____		_____
_____		_____
_____		_____
Income recorded on books not included in return:		
_____		_____
_____		_____
_____		_____
Deduction on return not charged against book income:		
_____		_____
_____		_____
_____		_____
Federal tax net income		\$ <u>130,400</u>

Computation of tax :

* Data related to taxable income is unavailable due to change in ownership.

**WATER
OPERATION
SECTION**

UTILITY NAME: Ni Florida, Inc.

YEAR OF REPORT
December 31, 2020

SYSTEM NAME / COUNTY : Tamiami / Lee County

SCHEDULE OF YEAR END WATER RATE BASE

ACCT. NO. (a)	ACCOUNT NAME (b)	REFERENCE PAGE (c)	WATER UTILITY (d)
101	Utility Plant In Service	W-4(b)	\$ 650,790
	Less:		
	Nonused and Useful Plant (1)		
108	Accumulated Depreciation	W-6(b)	415,930
110	Accumulated Amortization	F-8	
271	Contributions in Aid of Construction	W-7	110,815
252	Advances for Construction	F-20	
Subtotal			\$ 124,045
272	Add: Accumulated Amortization of Contributions in Aid of Construction	W-8(a)	\$ 110,815
Subtotal			\$ 234,860
114	Plus or Minus: Acquisition Adjustments (2)	F-7	1,530,758
115	Accumulated Amortization of Acquisition Adjustments (2)	F-7	
	Working Capital Allowance (1)		96,669
	Other (Specify):		
	Excludes Acquisition Adjustment not approved by the PSC		(1,530,758)
WATER RATE BASE			\$ 331,529
WATER OPERATING INCOME		W-3	\$ 19,172
ACHIEVED RATE OF RETURN (Water Operating Income / Water Rate Base)			5.78%

- NOTES : (1) Estimate based on the methodology used in the last rate proceeding.
- (2) Include only those Acquisition Adjustments that have been approved by the Commission.
- (3) Calculation consistent with last rate proceeding.
In absence of a rate proceeding, Class A utilities will use the Balance Sheet Method and Class B Utilities will use the One-eighth Operating and Maintenance Expense Method.

UTILITY NAME:

Ni Florida, Inc.

YEAR OF REPORT December 31, 2020
--

SYSTEM NAME / COUNTY :

Tamiami / Lee County

WATER OPERATING STATEMENT

ACCT. NO. (a)	ACCOUNT NAME (b)	REFERENCE PAGE (c)	CURRENT YEAR (d)
	UTILITY OPERATING INCOME		
400	Operating Revenues	W-9	\$ 273,369
469	Less: Guaranteed Revenue and AFPI	W-9	0
	Net Operating Revenues		\$ 273,369
401	Operating Expenses	W-10(a)	\$ 214,982
403	Depreciation Expense	W-6(a)	20,549
	Less: Amortization of CIAC	W-8(a)	0
	Net Depreciation Expense		\$ 20,549
406	Amortization of Utility Plant Acquisition Adjustment	F-7	
407	Amortization Expense (Other than CIAC)	F-8	0
408.10	Taxes Other Than Income Utility Regulatory Assessment Fee		12,302
408.11	Property Taxes		
408.12	Payroll Taxes		0
408.13	Other Taxes and Licenses		
408	Total Taxes Other Than Income		\$ 12,302
409.1	Income Taxes		6,364
410.10	Deferred Federal Income Taxes		
410.11	Deferred State Income Taxes		
411.10	Provision for Deferred Income Taxes - Credit		
412.10	Investment Tax Credits Deferred to Future Periods		
412.11	Investment Tax Credits Restored to Operating Income		
	Utility Operating Expenses		\$ 254,197
	Utility Operating Income		\$ 19,172
469	Add Back: Guaranteed Revenue (and AFPI)	W-9	\$ 0
413	Income From Utility Plant Leased to Others		
414	Gains (losses) From Disposition of Utility Property		0
420	Allowance for Funds Used During Construction		
	Total Utility Operating Income		\$ 19,172

UTILITY NAME:

Ni Florida, Inc.

YEAR OF REPORT

December 31, 2020

SYSTEM NAME / COUNTY :

Tamiami / Lee County

WATER UTILITY PLANT ACCOUNTS

ACCT. NO. (a)	ACCOUNT NAME (b)	PREVIOUS YEAR (c)	ADDITIONS (d)	RETIREMENTS (e)	CURRENT YEAR (f)
301	Organization	\$	\$	\$	\$ 0
302	Franchises				0
303	Land and Land Rights				0
304	Structures and Improvements				0
305	Collecting and Impounding Reservoirs				0
306	Lake, River and Other Intakes				0
307	Wells and Springs				0
308	Infiltration Galleries and Tunnels				0
309	Supply Mains				0
310	Power Generation Equipment				0
311	Pumping Equipment				0
320	Water Treatment Equipment				0
330	Distribution Reservoirs and Standpipes				0
331	Transmission and Distribution Mains	297,083			297,083
333	Services	63,874	18,454		82,328
334	Meters and Meter Installations	232,057			232,057
335	Hydrants	0			0
336	Backflow Prevention Devices	6,672			6,672
339	Other Plant Miscellaneous Equipment	0			0
340	Office Furniture and Equipment	13,451			13,451
341	Transportation Equipment	0			0
342	Stores Equipment	0			0
343	Tools, Shop and Garage Equipment	0			0
344	Laboratory Equipment	0			0
345	Power Operated Equipment	0			0
346	Communication Equipment	0			0
347	Miscellaneous Equipment	0			0
348	Other Tangible Plant	19,198			19,198
TOTAL WATER PLANT		\$ 632,335	\$ 18,454	\$ 0	\$ 650,790

NOTE: Any adjustments made to reclassify property from one account to another must be footnoted.

W-4(a)
GROUP _____

UTILITY NAME: Ni Florida, Inc.

YEAR OF REPORT December 31, 2020

SYSTEM NAME / COUNTY : Tamiami / Lee County

WATER UTILITY PLANT MATRIX

ACCT. NO. (a)	ACCOUNT NAME (b)	CURRENT YEAR (c)	.1 INTANGIBLE PLANT (d)	.2 SOURCE OF SUPPLY AND PUMPING PLANT (e)	.3 WATER TREATMENT PLANT (f)	.4 TRANSMISSION AND DISTRIBUTION PLANT (g)	.5 GENERAL PLANT (h)
301	Organization	\$ 0	\$	\$	\$	\$	\$
302	Franchises	0					
303	Land and Land Rights	0					
304	Structures and Improvements	0					
305	Collecting and Impounding Reservoirs	0					
306	Lake, River and Other Intakes	0					
307	Wells and Springs	0					
308	Infiltration Galleries and Tunnels	0					
309	Supply Mains	0					
310	Power Generation Equipment	0					
311	Pumping Equipment	0					
320	Water Treatment Equipment	0					
330	Distribution Reservoirs and Standpipes	0					
331	Transmission and Distribution Mains	297,083				297,083	
333	Services	82,328				82,328	
334	Meters and Meter Installations	232,057				232,057	
335	Hydrants	0					
336	Backflow Prevention Devices	6,672				6,672	
339	Other Plant Miscellaneous Equipment	0					
340	Office Furniture and Equipment	13,451					13,451
341	Transportation Equipment	0					
342	Stores Equipment	0					
343	Tools, Shop and Garage Equipment	0					
344	Laboratory Equipment	0					
345	Power Operated Equipment	0					
346	Communication Equipment	0					
347	Miscellaneous Equipment	0					
348	Other Tangible Plant	19,198					19,198
TOTAL WATER PLANT		\$ 650,790	\$ 0	\$ 0	\$ 0	\$ 618,140	\$ 32,649

YEAR OF REPORT December 31, 2020

UTILITY NAME: Ni Florida, Inc.

SYSTEM NAME / COUNTY : Tamiami / Lee County

BASIS FOR WATER DEPRECIATION CHARGES

ACCT. NO. (a)	ACCOUNT NAME (b)	AVERAGE SERVICE LIFE IN YEARS (c)	AVERAGE NET SALVAGE IN PERCENT (d)	DEPRECIATION RATE APPLIED IN PERCENT (100% - d) / c (e)
304	Structures and Improvements			
305	Collecting and Impounding Reservoirs			
306	Lake, River and Other Intakes			
307	Wells and Springs			
308	Infiltration Galleries and Tunnels			
309	Supply Mains			
310	Power Generation Equipment			
311	Pumping Equipment			
320	Water Treatment Equipment			
330	Distribution Reservoirs and Standpipes			
331	Transmission and Distribution Mains	43		2.33%
333	Services	40		2.50%
334	Meters and Meter Installations	20		5.00%
335	Hydrants			
336	Backflow Prevention Devices	15		6.67%
339	Other Plant Miscellaneous Equipment			
340	Office Furniture and Equipment			
341	Transportation Equipment			
342	Stores Equipment			
343	Tools, Shop and Garage Equipment			
344	Laboratory Equipment			
345	Power Operated Equipment			
346	Communication Equipment			
347	Miscellaneous Equipment			
348	Other Tangible Plant	10		10.00%
Water Plant Composite Depreciation Rate *				

* If depreciation rates prescribed by this Commission are on a total composite basis, entries should be made on this line only.

UTILITY NAME: Ni Florida, Inc.

YEAR OF REPORT
December 31, 2020

SYSTEM NAME / COUNTY : Tamiami / Lee County

ANALYSIS OF ENTRIES IN WATER ACCUMULATED DEPRECIATION

ACCT. NO. (a)	ACCOUNT NAME (b)	BALANCE AT BEGINNING OF YEAR (c)	ACCRUALS (d)	OTHER CREDITS * (e)	TOTAL CREDITS (d + e) (f)
304	Structures and Improvements	\$ _____	\$ _____	\$ _____	\$ _____ 0
305	Collecting and Impounding Reservoirs	_____	_____	_____	_____ 0
306	Lake, River and Other Intakes	_____	_____	_____	_____ 0
307	Wells and Springs	_____	_____	_____	_____ 0
308	Infiltration Galleries and Tunnels	_____	_____	_____	_____ 0
309	Supply Mains	_____	_____	_____	_____ 0
310	Power Generation Equipment	_____	_____	_____	_____ 0
311	Pumping Equipment	_____	_____	_____	_____ 0
320	Water Treatment Equipment	_____	_____	_____	_____ 0
330	Distribution Reservoirs and Standpipes	_____	_____	_____	_____ 0
331	Transmission and Distribution Mains	171,743	6,935	_____	6,935
333	Services	51,028	491	_____	491
334	Meters and Meter Installations	141,139	11,603	_____	11,603
335	Hydrants	0	_____	_____	0
336	Backflow Prevention Devices	2,673	445	_____	445
339	Other Plant Miscellaneous Equipment	0	_____	_____	0
340	Office Furniture and Equipment	13,451	_____	_____	0
341	Transportation Equipment	0	_____	_____	0
342	Stores Equipment	0	_____	_____	0
343	Tools, Shop and Garage Equipment	0	_____	_____	0
344	Laboratory Equipment	0	_____	_____	0
345	Power Operated Equipment	0	_____	_____	0
346	Communication Equipment	0	_____	_____	0
347	Miscellaneous Equipment	0	_____	_____	0
348	Other Tangible Plant	15,347	1,075	_____	1,075
TOTAL WATER ACCUMULATED DEPRECIATION		\$ 395,381	20,549	0	20,549

*
Use () to denote reversal entries.

W-6(a)
GROUP _____

UTILITY NAME:

Ni Florida, Inc.

YEAR OF REPORT December 31, 2020
--

SYSTEM NAME / COUNTY :

Tamiami / Lee County

ANALYSIS OF ENTRIES IN WATER ACCUMULATED DEPRECIATION (CONT'D)

ACCT. NO. (a)	ACCOUNT NAME (b)	PLANT RETIRED (g)	SALVAGE AND INSURANCE (h)	COST OF REMOVAL AND OTHER CHARGES (i)	TOTAL CHARGES (g-h+i) (j)	BALANCE AT END OF YEAR (c+f-j) (k)
304	Structures and Improvements	\$ _____	\$ _____	\$ _____	\$ 0	\$ 0
305	Collecting and Impounding Reservoirs	_____	_____	_____	0	0
306	Lake, River and Other Intakes	_____	_____	_____	0	0
307	Wells and Springs	_____	_____	_____	0	0
308	Infiltration Galleries and Tunnels	_____	_____	_____	0	0
309	Supply Mains	_____	_____	_____	0	0
310	Power Generation Equipment	_____	_____	_____	0	0
311	Pumping Equipment	_____	_____	_____	0	0
320	Water Treatment Equipment	_____	_____	_____	0	0
330	Distribution Reservoirs and Standpipes	_____	_____	_____	0	0
331	Transmission and Distribution Mains	_____	_____	_____	0	178,678
333	Services	_____	_____	_____	0	51,519
334	Meters and Meter Installations	_____	_____	_____	0	152,742
335	Hydrants	_____	_____	_____	0	0
336	Backflow Prevention Devices	_____	_____	_____	0	3,118
339	Other Plant Miscellaneous Equipment	_____	_____	_____	0	0
340	Office Furniture and Equipment	_____	_____	_____	0	13,451
341	Transportation Equipment	_____	_____	_____	0	0
342	Stores Equipment	_____	_____	_____	0	0
343	Tools, Shop and Garage Equipment	_____	_____	_____	0	0
344	Laboratory Equipment	_____	_____	_____	0	0
345	Power Operated Equipment	_____	_____	_____	0	0
346	Communication Equipment	_____	_____	_____	0	0
347	Miscellaneous Equipment	_____	_____	_____	0	0
348	Other Tangible Plant	_____	_____	_____	0	16,422
TOTAL WATER ACCUMULATED DEPRECIATION		\$ <u>0</u>	\$ <u>0</u>	\$ <u>0</u>	\$ <u>0</u>	\$ <u>415,930</u>

YEAR OF REPORT December 31, 2020
--

UTILITY NAME: Ni Florida, Inc.
 SYSTEM NAME / COUNTY : Tamiami / Lee County

WATER CIAC SCHEDULE "A"
 ADDITIONS TO CONTRIBUTIONS IN AID OF CONSTRUCTION RECEIVED FROM CAPACITY,
 MAIN EXTENSION AND CUSTOMER CONNECTION CHARGES RECEIVED DURING THE YEAR

DESCRIPTION OF CHARGE (a)	NUMBER OF CONNECTIONS (b)	CHARGE PER CONNECTION (c)	AMOUNT (d)
Contributions in Aid of Construction None	_____	\$ _____	\$ _____ 0
_____	_____	_____	_____
_____	_____	_____	_____
_____	_____	_____	_____
_____	_____	_____	_____
_____	_____	_____	_____
_____	_____	_____	_____
Total Credits			\$ _____ 0

ACCUMULATED AMORTIZATION OF WATER CONTRIBUTIONS IN AID OF CONSTRUCTION

DESCRIPTION (a)	WATER (b)
Balance first of year	\$ _____ 110,815
Debits during the year:	
Accruals charged to Account 272	\$ _____ 0
Other debits (specify):	
Rate Base Audit & other adjustments	_____
_____	_____
Total debits	\$ _____ 0
Credits during the year (specify):	
_____	\$ _____
_____	_____
Total credits	\$ _____ 0
Balance end of year	\$ _____ 110,815

UTILITY NAME: Ni Florida, Inc.

YEAR OF REPORT
December 31, 2020

SYSTEM NAME / COUNTY : Tamiami / Lee County

WATER CIAC SCHEDULE "B"
ADDITIONS TO CONTRIBUTIONS IN AID OF CONSTRUCTION
RECEIVED FROM ALL DEVELOPERS OR CONTRACTORS AGREEMENTS
WHICH CASH OR PROPERTY WAS RECEIVED DURING THE YEAR

DESCRIPTION (a)	INDICATE CASH OR PROPERTY (b)	AMOUNT (c)
NONE		\$ 0
Total Credits		\$ 0

UTILITY NAME:

Ni Florida, Inc.

YEAR OF REPORT December 31, 2020
--

SYSTEM NAME / COUNTY :

Tamiami / Lee County

WATER OPERATING REVENUE

ACCT. NO. (a)	DESCRIPTION (b)	BEGINNING YEAR NO. CUSTOMERS * (c)	YEAR END NUMBER OF CUSTOMERS (d)	AMOUNT (e)
460	Water Sales: Unmetered Water Revenue			\$
461.1	Metered Water Revenue: Sales to Residential Customers	720	720	208,529
461.2	Sales to Commercial Customers	25	25	34,901
461.3	Sales to Industrial Customers	1	1	25,887
461.4	Sales to Public Authorities			
461.5	Sales Multiple Family Dwellings			
Total Metered Sales		746	746	\$ 269,317
462.1	Fire Protection Revenue: Public Fire Protection			
462.2	Private Fire Protection			
Total Fire Protection Revenue		0	0	\$ 0
464	Other Sales To Public Authorities			
465	Sales To Irrigation Customers			
466	Sales For Resale			
467	Interdepartmental Sales			
Total Water Sales		746	746	\$ 269,317
469	Other Water Revenues: Guaranteed Revenues (Including Allowance for Funds Prudently Invested or AFPI)			\$
470	Forfeited Discounts			
471	Miscellaneous Service Revenues			
472	Rents From Water Property			
473	Interdepartmental Rents			
474	Other Water Revenues			4,052
Total Other Water Revenues				\$ 4,052
Total Water Operating Revenues				\$ 273,369

* Customer is defined by Rule 25-30.210(1), Florida Administrative Code.

UTILITY NAME:

Ni Florida, Inc.

YEAR OF REPORT

December 31, 2020

SYSTEM NAME / COUNTY :

Tamiami / Lee County

WATER UTILITY EXPENSE ACCOUNT MATRIX

ACCT. NO. (a)	ACCOUNT NAME (b)	CURRENT YEAR (c)	.1 SOURCE OF SUPPLY AND EXPENSES - OPERATIONS (d)	.2 SOURCE OF SUPPLY AND EXPENSES - MAINTENANCE (e)
601	Salaries and Wages - Employees	\$ 0	\$	\$
603	Salaries and Wages - Officers, Directors and Majority Stockholders	0		
604	Employee Pensions and Benefits	0		
610	Purchased Water	78,060	78,060	
615	Purchased Power	0		
616	Fuel for Power Production	0		
618	Chemicals	0		
620	Materials and Supplies	0		
631	Contractual Services-Engineering	0		
632	Contractual Services - Accounting	0		
633	Contractual Services - Legal	538		
634	Contractual Services - Mgt. Fees	81,299		
635	Contractual Services - Testing	3,786		
636	Contractual Services - Other	9,989		
641	Rental of Building/Real Property	0		
642	Rental of Equipment	0		
650	Transportation Expenses	0		
656	Insurance - Vehicle	0		
657	Insurance - General Liability	3,743		
658	Insurance - Workman's Comp.	0		
659	Insurance - Other	594		
660	Advertising Expense	0		
666	Regulatory Commission Expenses - Amortization of Rate Case Expense	4,992		
667	Regulatory Commission Exp.-Other	0		
668	Water Resource Conservation Exp.	0		
670	Bad Debt Expense	1,367		
675	Miscellaneous Expenses	30,614		
Total Water Utility Expenses		\$ 214,982	\$ 78,060	\$ 0

UTILITY NAME:

Ni Florida, Inc.

YEAR OF REPORT

December 31, 2020

SYSTEM NAME / COUNTY :

Tamiami / Lee County

PUMPING AND PURCHASED WATER STATISTICS

MONTH (a)	WATER PURCHASED FOR RESALE (Omit 000's) (b)	FINISHED WATER PUMPED FROM WELLS (Omit 000's) (c)	WATER USED FOR LINE FLUSHING, FIGHTING FIRES, ETC. (d)	TOTAL WATER PUMPED AND PURCHASED (Omit 000's) [(b)+(c)-(d)] (e)	WATER SOLD TO CUSTOMERS (Omit 000's) (f)
January	2,317		125	2,192	1,986
February	2,527		125	2,402	2,322
March	2,571		125	2,446	2,137
April	2,193		125	2,068	1,672
May	1,629		125	1,504	1,190
June	1,575		125	1,450	1,225
July	1,363		125	1,238	948
August	1,416		125	1,291	1,020
September	1,168		125	1,043	968
October	1,135		125	1,010	882
November	1,328		125	1,203	1,039
December	1,561		125	1,436	1,151
Total for Year	20,783	0	1,500	19,283	16,541

If water is purchased for resale, indicate the following:

Vendor Lee County Utilities

Point of delivery Meter

If water is sold to other water utilities for redistribution, list names of such utilities below:

SOURCE OF SUPPLY

List for each source of supply:	CAPACITY OF WELL	GALLONS PER DAY FROM SOURCE	TYPE OF SOURCE
All water is purchased from Lee County	N/A		

W-11

GROUP _____

SYSTEM _____

YEAR OF REPORT
December 31, 2020

UTILITY NAME: Ni Florida, Inc.

SYSTEM NAME / COUNTY : Tamiami / Lee County

WATER TREATMENT PLANT INFORMATION

Provide a separate sheet for each water treatment facility

Permitted Capacity of Plant (GPD):	<u>N/A</u>		
Location of measurement of capacity (i.e. Wellhead, Storage Tank):	<u>N/A</u>		
Type of treatment (reverse osmosis, (sedimentation, chemical, aerated, etc.):	<u>N/A - All water is purchased from Lee County</u>		
LIME TREATMENT			
Unit rating (i.e., GPM, pounds per gallon):	<u>N/A</u>	Manufacturer:	<u>N/A</u>
FILTRATION			
Type and size of area:			
Pressure (in square feet):	<u>N/A</u>	Manufacturer:	<u>N/A</u>
Gravity (in GPM/square feet):	<u>N/A</u>	Manufacturer:	<u>N/A</u>

UTILITY NAME:

Ni Florida, Inc.

YEAR OF REPORT

December 31, 2020

SYSTEM NAME / COUNTY :

Tamiami / Lee County

CALCULATION OF THE WATER SYSTEM METER EQUIVALENTS

METER SIZE (a)	TYPE OF METER (b)	EQUIVALENT FACTOR (c)	NUMBER OF METERS (d)	TOTAL NUMBER OF METER EQUIVALENTS (c x d) (e)
All Residential		1.0	720	720.0
5/8"	Displacement	1.0	18	18.0
3/4"	Displacement	1.5		-
1"	Displacement	2.5	1	2.5
1 1/2"	Displacement or Turbine	5.0	6	30.0
2"	Displacement, Compound or Turbine	8.0		
3"	Displacement	15.0	1	15.0
3"	Compound	16.0		
3"	Turbine	17.5		
4"	Displacement or Compound	25.0		
4"	Turbine	30.0		
6"	Displacement or Compound	50.0		
6"	Turbine	62.5		
8"	Compound	80.0		
8"	Turbine	90.0		
10"	Compound	115.0		
10"	Turbine	145.0		
12"	Turbine	215.0		
Total Water System Meter Equivalents				<u>785.5</u>

CALCULATION OF THE WATER SYSTEM EQUIVALENT RESIDENTIAL CONNECTIONS

Provide a calculation used to determine the value of one water equivalent residential connection (ERC).

Use one of the following methods:

- (a) If actual flow data are available from the preceding 12 months, divide the total annual single family residence (SFR) gallons sold by the average number of single family residence customers for the same period and divide the result by 365 days.
- (b) If no historical flow data are available, use:
 $ERC = (\text{Total SFR gallons sold (Omit 000)} / 365 \text{ days} / 350 \text{ gallons per day})$

ERC Calculation:

$$ERC = (16,540.6 \text{ thousand gallons sold} / 365 \text{ days} / 350 \text{ gallons per day}) = 129.5 \text{ ERCs}$$

W-13

GROUP _____

SYSTEM _____

UTILITY NAME: Ni Florida, Inc.
SYSTEM NAME / COUNTY : Tamiami / Lee County

OTHER WATER SYSTEM INFORMATION

Furnish information below for each system. A separate page should be supplied where necessary.

- 1. Present ERCs * the system can efficiently serve. Water is purchased
- 2. Maximum number of ERCs * which can be served. Water is purchased
- 3. Present system connection capacity (in ERCs *) using existing lines. Water is purchased
- 4. Future connection capacity (in ERCs *) upon service area buildout. Water is purchased
- 5. Estimated annual increase in ERCs *. 5 or less
- 6. Is the utility required to have fire flow capacity?
If so, how much capacity is required? No
N/A
- 7. Attach a description of the fire fighting facilities.
- 8. Describe any plans and estimated completion dates for any enlargements or improvements of this system:
N/A
- 9. When did the company last file a capacity analysis report with the DEP? N/A
- 10. If the present system does not meet the requirements of DEP rules:
 - a. Attach a description of the plant upgrade necessary to meet the DEP rules.
 - b. Have these plans been approved by DEP? N/A
 - c. When will construction begin? N/A
 - d. Attach plans for funding the required upgrading.
 - e. Is this system under any Consent Order with DEP? No
- 11. Department of Environmental Protection ID # 5364151
- 12. Water Management District Consumptive Use Permit # N/A
 - a. Is the system in compliance with the requirements of the CUP? N/A
 - b. If not, what are the utility's plans to gain compliance? N/A

* An ERC is determined based on the calculation on the bottom of Page W-13.

**THIS PAGE LEFT
BLANK INTENTIONALLY**

**WASTEWATER
OPERATION
SECTION**

UTILITY NAME:

Ni Florida, Inc.

YEAR OF REPORT December 31, 2020
--

SYSTEM NAME / COUNTY :

Hudson / Pasco County

SCHEDULE OF YEAR END WASTEWATER RATE BASE

ACCT. NO. (a)	ACCOUNT NAME (b)	REFERENCE PAGE (c)	WASTEWATER UTILITY (d)
101	Utility Plant In Service	S-4(a)	\$ 11,918,381
	Less:		
	Nonused and Useful Plant (1)		
108	Accumulated Depreciation	S-6(b)	<u>6,159,389</u>
110	Accumulated Amortization	F-8	<u>0</u>
271	Contributions in Aid of Construction	S-7	<u>4,121,805</u>
252	Advances for Construction	F-20	
Subtotal			\$ <u>1,637,187</u>
	Add:		
272	Accumulated Amortization of Contributions in Aid of Construction	S-8(a)	\$ 2,553,555
Subtotal			\$ <u>4,190,742</u>
	Plus or Minus:		
114	Acquisition Adjustments (2)	F-7	<u>8,947,690</u>
115	Accumulated Amortization of Acquisition Adjustments (2)	F-7	
	Working Capital Allowance (1)		<u>228,738</u>
	Other (Specify):		
	Excludes Acquisition Adjustment not approved by the PSC		<u>(8,947,690)</u>
WASTEWATER RATE BASE			\$ <u>4,419,480</u>
WASTEWATER OPERATING INCOME		S-3	\$ <u>292,565</u>
ACHIEVED RATE OF RETURN (Wastewater Operating Income / Wastewater Rate Base)			<u>6.62%</u>

NOTES : (1) Estimate based on the methodology used in the last rate proceeding.

(2) Include only those Acquisition Adjustments that have been approved by the Commission.

(3) Calculation consistent with last rate proceeding.

In absence of a rate proceeding, Class A utilities will use the Balance Sheet Method and Class B Utilities will use the One-eighth Operating and Maintenance Expense Method.

UTILITY NAME: Ni Florida, Inc.

YEAR OF REPORT
December 31, 2020

SYSTEM NAME / COUNTY : Hudson / Pasco County

WASTEWATER OPERATING STATEMENT

ACCT. NO. (a)	ACCOUNT NAME (b)	REFERENCE PAGE (c)	WASTEWATER UTILITY (d)
UTILITY OPERATING INCOME			
400	Operating Revenues	S-9(a)	\$ 2,381,225
530	Less: Guaranteed Revenue (and AFPI)	S-9(a)	0
Net Operating Revenues			\$ 2,381,225
401	Operating Expenses	S-10(a)	\$ 1,637,634
403	Depreciation Expense	S-6(a)	288,226
	Less: Amortization of CIAC	S-8(a)	118,657
Net Depreciation Expense			\$ 169,569
406	Amortization of Utility Plant Acquisition Adjustment	F-7	
407	Amortization Expense (Other than CIAC)	F-8	0
408.10	Taxes Other Than Income Utility Regulatory Assessment Fee		107,155
408.11	Property Taxes		76,144
408.12	Payroll Taxes		0
408.13	Other Taxes and Licenses		0
408	Total Taxes Other Than Income		\$ 183,299
409.1	Income Taxes		98,158
410.10	Deferred Federal Income Taxes		
410.11	Deferred State Income Taxes		
411.10	Provision for Deferred Income Taxes - Credit		
412.10	Investment Tax Credits Deferred to Future Periods		
412.11	Investment Tax Credits Restored to Operating Income		
Utility Operating Expenses			\$ 2,088,660
Utility Operating Income			\$ 292,565
530	Add Back: Guaranteed Revenue (and AFPI)	S-9(a)	\$ 0
413	Income From Utility Plant Leased to Others		
414	Gains (losses) From Disposition of Utility Property		0
420	Allowance for Funds Used During Construction		
Total Utility Operating Income			\$ 292,565

UTILITY NAME:

Ni Florida, Inc.

YEAR OF REPORT

December 31, 2020

SYSTEM NAME / COUNTY :

Hudson / Pasco County

WASTEWATER UTILITY PLANT ACCOUNTS

ACCT. NO. (a)	ACCOUNT NAME (b)	PREVIOUS YEAR (c)	ADDITIONS (d)	RETIREMENTS (e)	CURRENT YEAR (f)
351	Organization	\$ 6,247	\$	\$	\$ 6,247
352	Franchises				
353	Land and Land Rights	34,513	500		35,013
354	Structures and Improvements	7,957	7,500		15,457
355	Power Generation Equipment				
360	Collection Sewers - Force	1,370,874	408,749		1,779,623
361	Collection Sewers - Gravity	4,747,851	66,054		4,813,905
362	Special Collecting Structures	418,723	0		418,723
363	Services to Customers	1,201,890	2,509		1,204,399
364	Flow Measuring Devices	172,390			172,390
365	Flow Measuring Installations				
366	Reuse Services				
367	Reuse Meters and Meter Installations				
370	Receiving Wells	784,361	114,191		898,552
371	Pumping Equipment	1,970,852	272,137		2,242,989
374	Reuse Distribution Reservoirs				
375	Reuse Transmission and Distribution System				
380	Treatment and Disposal Equipment				
381	Plant Sewers				
382	Outfall Sewer Lines				
389	Other Plant Miscellaneous Equipment	110,640			110,640
390	Office Furniture and Equipment	38,831			38,831
391	Transportation Equipment	146,609			146,609
392	Stores Equipment				
393	Tools, Shop and Garage Equipment	10,829			10,829
394	Laboratory Equipment				
395	Power Operated Equipment	15,484			15,484
396	Communication Equipment				0
397	Miscellaneous Equipment	2,814	828		3,642
398	Other Tangible Plant	5,048			5,048
Total Wastewater Plant		\$ 11,045,913	\$ 872,468	\$ 0	\$ 11,918,381

NOTE: Any adjustments made to reclassify property from one account to another must be footnoted.

UTILITY NAME: Ni Florida, Inc.

SYSTEM NAME / COUNTY : Hudson / Pasco County

WASTEWATER UTILITY PLANT MATRIX

ACCT. NO. (a)	ACCOUNT NAME (b)	.1 INTANGIBLE PLANT (g)	.2 COLLECTION PLANT (h)	.3 SYSTEM PUMPING PLANT (i)	.4 TREATMENT AND DISPOSAL (j)	.5 RECLAIMED WASTEWATER TREATMENT PLANT (i)	.6 RECLAIMED WASTEWATER DISTRIBUTION PLANT (j)	.7 GENERAL PLANT (k)
351	Organization	\$ 6,247						
352	Franchises							
353	Land and Land Rights				35,013			
354	Structures and Improvements				15,457			
355	Power Generation Equipment							
360	Collection Sewers - Force		1,779,623					
361	Collection Sewers - Gravity		4,813,905					
362	Special Collecting Structures		418,723					
363	Services to Customers		1,204,399					
364	Flow Measuring Devices		172,390					
365	Flow Measuring Installations							
366	Reuse Services							
367	Reuse Meters and Meter Installations							
370	Receiving Wells			898,552				
371	Pumping Equipment			2,242,989				
374	Reuse Distribution Reservoirs							
375	Reuse Transmission and Distribution System							
380	Treatment and Disposal Equipment							
381	Plant Sewers							
382	Outfall Sewer Lines							
389	Other Plant Miscellaneous Equipment				110,640			
390	Office Furniture and Equipment							38,831
391	Transportation Equipment							146,609
392	Stores Equipment							
393	Tools, Shop and Garage Equipment							10,829
394	Laboratory Equipment							
395	Power Operated Equipment							15,484
396	Communication Equipment							0
397	Miscellaneous Equipment							3,642
398	Other Tangible Plant							5,048
Total Wastewater Plant		\$ 6,247	\$ 8,389,040	\$ 3,141,541	\$ 161,110	\$ 0	\$ 0	\$ 220,443

NOTE: Any adjustments made to reclassify property from one account to another must be footnoted.

YEAR OF REPORT December 31, 2020
--

UTILITY NAME: Ni Florida, Inc.

SYSTEM NAME / COUNTY : Hudson / Pasco County

BASIS FOR WASTEWATER DEPRECIATION CHARGES

ACCT. NO. (a)	ACCOUNT NAME (b)	AVERAGE SERVICE LIFE IN YEARS (c)	AVERAGE NET SALVAGE IN PERCENT (d)	DEPRECIATION RATE APPLIED IN PERCENT (100% - D) / C (e)
354	Structures and Improvements	32		3.13%
355	Power Generation Equipment			
360	Collection Sewers - Force	30		3.33%
361	Collection Sewers - Gravity	45		2.22%
362	Special Collecting Structures	40		2.50%
363	Services to Customers	38		2.63%
364	Flow Measuring Devices			
365	Flow Measuring Installations			
366	Reuse Services			
367	Reuse Meters and Meter Installations			
370	Receiving Wells	30		3.33%
371	Pumping Equipment	18		5.56%
374	Reuse Distribution Reservoirs			
375	Reuse Transmission/Distribution Sys.			
380	Treatment and Disposal Equipment			
381	Plant Sewers			
382	Outfall Sewer Lines			
389	Other Plant Miscellaneous Equipment	15		6.67%
390	Office Furniture and Equipment			
391	Transportation Equipment			
392	Stores Equipment			
393	Tools, Shop and Garage Equipment			
394	Laboratory Equipment			
395	Power Operated Equipment	10		10.00%
396	Communication Equipment			
397	Miscellaneous Equipment	10		10.00%
398	Other Tangible Plant			
Wastewater Plant Composite Depreciation Rate *				

* If depreciation rates prescribed by this Commission are on a total composite basis, entries should be made on this line only.

UTILITY NAME: Ni Florida, Inc.

YEAR OF REPORT
December 31, 2020

SYSTEM NAME / COUNTY : Hudson / Pasco County

ANALYSIS OF ENTRIES IN WASTEWATER ACCUMULATED DEPRECIATION

ACCT. NO. (a)	ACCOUNT NAME (b)	BALANCE AT BEGINNING OF YEAR (c)	ACCRUALS (d)	OTHER CREDITS * (e)	TOTAL CREDITS (d + e) (f)
351	Organization Costs	\$ 6,247	\$	\$	\$ 0
354	Structures and Improvements	2,763	307		307
355	Power Generation Equipment	0			0
360	Collection Sewers - Force	1,059,567	30,539		30,539
361	Collection Sewers - Gravity	1,908,422	106,642		106,642
362	Special Collecting Structures	351,937	10,468		10,468
363	Services to Customers	576,774	31,671		31,671
364	Flow Measuring Devices	172,390	0		0
365	Flow Measuring Installations	0			0
366	Reuse Services	0			0
367	Reuse Meters and Meter Installations	0			0
370	Receiving Wells	509,335	27,088		27,088
371	Pumping Equipment	1,012,618	72,503		72,503
374	Reuse Distribution Reservoirs	0			0
375	Reuse Transmission/Distribution Sys.	0			0
380	Treatment and Disposal Equipment	0			0
381	Plant Sewers	0			0
382	Outfall Sewer Lines	0			0
389	Other Plant Miscellaneous Equipment	55,237	7,376		7,376
390	Office Furniture and Equipment	38,831			0
391	Transportation Equipment	146,609			0
392	Stores Equipment	0			0
393	Tools, Shop and Garage Equipment	10,829			0
394	Laboratory Equipment	0			0
395	Power Operated Equipment	11,742	1,549		1,549
396	Communication Equipment	0			0
397	Miscellaneous Equipment	2,814	83		83
398	Other Tangible Plant	5,048	0		0
Total Depreciable Wastewater Plant in Service		\$ 5,871,163	\$ 288,226	\$ 0	\$ 288,226

* Specify nature of transaction.
Use () to denote reversal entries.

S-6(a)
GROUP _____

YEAR OF REPORT
December 31, 2020

NI Florida, Inc.

Hudson / Pasco County

UTILITY NAME:

SYSTEM NAME / COUNTY :

ANALYSIS OF ENTRIES IN WASTEWATER ACCUMULATED DEPRECIATION

ACCT. NO.	ACCOUNT NAME	PLANT RETIRED	SALVAGE AND INSURANCE	COST OF REMOVAL AND OTHER CHARGES	TOTAL CHARGES	BALANCE AT END OF YEAR
(a)	(b)	(g)	(h)	(i)	(j)	(k)
351	Organization Costs				0	6,247
354	Structures and Improvements				0	3,070
355	Power Generation Equipment				0	0
360	Collection Sewers - Force				0	1,090,106
361	Collection Sewers - Gravity				0	2,015,064
362	Special Collecting Structures				0	362,405
363	Services to Customers				0	608,445
364	Flow Measuring Devices				0	172,390
365	Flow Measuring Installations				0	0
366	Reuse Services				0	0
367	Reuse Meters and Meter Installations				0	0
370	Receiving Wells				0	536,423
371	Pumping Equipment				0	1,085,121
374	Reuse Distribution Reservoirs				0	0
375	Reuse Transmission/Distribution Sys.				0	0
380	Treatment and Disposal Equipment				0	0
381	Plant Sewers				0	0
382	Outfall Sewer Lines				0	0
389	Other Plant Miscellaneous Equipment				0	62,613
390	Office Furniture and Equipment				0	38,831
391	Transportation Equipment				0	146,609
392	Stores Equipment				0	0
393	Tools, Shop and Garage Equipment				0	10,829
394	Laboratory Equipment				0	0
395	Power Operated Equipment				0	13,291
396	Communication Equipment				0	0
397	Miscellaneous Equipment				0	2,897
398	Other Tangible Plant				0	5,048
Total Depreciable Wastewater Plant in Service		\$ 0	\$ 0	\$ 0	\$ 0	\$ 6,159,389

Use () to denote reversal entries.

S-6(b)
GROUP

UTILITY NAME:

Ni Florida, Inc.

YEAR OF REPORT December 31, 2020
--

SYSTEM NAME / COUNTY :

Hudson / Pasco County

WASTEWATER OPERATING REVENUE

ACCT. NO. (a)	DESCRIPTION (b)	BEGINNING YEAR NO. CUSTOMERS * (c)	YEAR END NUMBER OF CUSTOMERS * (d)	AMOUNTS (e)
WASTEWATER SALES				
	Flat Rate Revenues:			
521.1	Residential Revenues	_____	_____	\$ _____
521.2	Commercial Revenues	_____	_____	_____
521.3	Industrial Revenues	_____	_____	_____
521.4	Revenues From Public Authorities	_____	_____	_____
521.5	Multiple Family Dwelling Revenues	_____	_____	_____
521.6	Other Revenues	_____	_____	_____
521	Total Flat Rate Revenues	0	0	\$ 0
	Measured Revenues:			
522.1	Residential Revenues	2,631	2,654	1,398,872
522.2	Commercial Revenues	158	157	485,927
522.3	Industrial Revenues	1	1	454,585
522.4	Revenues From Public Authorities	_____	_____	_____
522.5	Multiple Family Dwelling Revenues	_____	_____	_____
522	Total Measured Revenues	2,790	2,812	\$ 2,339,383
523	Revenues From Public Authorities	_____	_____	_____
524	Revenues From Other Systems	_____	_____	_____
525	Interdepartmental Revenues	_____	_____	_____
Total Wastewater Sales		2,790	2,812	\$ 2,339,383
OTHER WASTEWATER REVENUES				
530	Guaranteed Revenues (Including Allowance for Funds Prudently Invested or AFPI)			\$ _____
531	Sale of Sludge			_____
532	Forfeited Discounts			_____
534	Rents From Wastewater Property			_____
535	Interdepartmental Rents			_____
536	Other Wastewater Revenues			41,842
Total Other Wastewater Revenues				\$ 41,842

* Customer is defined by Rule 25-30.210(1), Florida Administrative Code.

UTILITY NAME: Ni Florida, Inc.

YEAR OF REPORT December 31, 2020
--

SYSTEM NAME / COUNTY : Hudson / Pasco County

WASTEWATER OPERATING REVENUE

ACCT. NO. (a)	DESCRIPTION (b)	BEGINNING YEAR NO. CUSTOMERS *	YEAR END NUMBER OF CUSTOMERS *	AMOUNTS (e)
RECLAIMED WATER SALES				
540.1	Flat Rate Reuse Revenues: Residential Reuse Revenues	_____	_____	\$ _____
540.2	Commercial Reuse Revenues	_____	_____	_____
540.3	Industrial Reuse Revenues	_____	_____	_____
540.4	Reuse Revenues From Public Authorities	_____	_____	_____
540.5	Other Revenues	_____	_____	_____
540	Total Flat Rate Reuse Revenues	_____ 0	_____ 0	\$ _____ 0
541.1	Measured Reuse Revenues: Residential Reuse Revenues	_____	_____	_____
541.2	Commercial Reuse Revenues	_____	_____	_____
541.3	Industrial Reuse Revenues	_____	_____	_____
541.4	Reuse Revenues From Public Authorities	_____	_____	_____
541	Total Measured Reuse Revenues	_____ 0	_____ 0	\$ _____ 0
544	Reuse Revenues From Other Systems	_____	_____	_____
Total Reclaimed Water Sales				\$ _____ 0
Total Wastewater Operating Revenues				\$ <u>2,381,225</u>

* Customer is defined by Rule 25-30.210(1), Florida Administrative Code.

UTILITY NAME: Ni Florida, Inc.

SYSTEM NAME / COUNTY : Hudson / Pasco County

WASTEWATER UTILITY EXPENSE ACCOUNT MATRIX

ACCT. NO. (a)	ACCOUNT NAME (b)	CURRENT YEAR (c)	.1	.2	.3	.4	.5	.6
			COLLECTION EXPENSES- OPERATIONS (d)	COLLECTION EXPENSES- MAINTENANCE (e)	PUMPING EXPENSES - OPERATIONS (f)	PUMPING EXPENSES - MAINTENANCE (g)	TREATMENT & DISPOSAL EXPENSES - OPERATIONS (h)	TREATMENT & DISPOSAL EXPENSES - MAINTENANCE (i)
701	Salaries and Wages - Employees	\$ 0	\$	\$	\$	\$	\$	\$
703	Salaries and Wages - Officers, Directors and Majority Stockholders	0						
704	Employee Pensions and Benefits	0						
710	Purchased Sewage Treatment	920,831					920,831	
711	Sludge Removal Expense	0						
715	Purchased Power	34,182					34,182	
716	Fuel for Power Production	0						
718	Chemicals	0						
720	Materials and Supplies	2,899						
731	Contractual Services-Engineering	0						
732	Contractual Services - Accounting	0						
733	Contractual Services - Legal	3,852					3,852	
734	Contractual Services - Mgt. Fees	316,151					316,151	
735	Contractual Services - Testing	2,138					2,138	
736	Contractual Services - Other	122,216					122,216	
741	Rental of Building/Real Property	0						
742	Rental of Equipment	0						
750	Transportation Expenses	0						
756	Insurance - Vehicle	0						
757	Insurance - General Liability	15,477					15,477	
758	Insurance - Workman's Comp.	0						
759	Insurance - Other	2,430					2,430	
760	Advertising Expense	0						
766	Regulatory Commission Expenses - Amortization of Rate Case Expense	18,779						
767	Regulatory Commission Exp.-Other	0						
770	Bad Debt Expense	35,718						
775	Miscellaneous Expenses	162,961						
Total Wastewater Utility Expenses		\$ 1,637,634	\$ 0	\$ 0	\$ 0	\$ 0	\$ 1,417,277	\$ 0

UTILITY NAME: Ni Florida, Inc.

SYSTEM NAME / COUNTY : Hudson / Pasco County

WASTEWATER UTILITY EXPENSE ACCOUNT MATRIX

ACCT. NO. (a)	ACCOUNT NAME (b)	.7 CUSTOMER ACCOUNTS EXPENSE (j)	.8 ADMIN. & GENERAL EXPENSES (k)	.9 RECLAIMED WATER TREATMENT EXPENSES- OPERATIONS (l)	.10 RECLAIMED WATER TREATMENT EXPENSES- MAINTENANCE (m)	.11 RECLAIMED WATER DISTRIBUTION EXPENSES- OPERATIONS (n)	.12 RECLAIMED WATER DISTRIBUTION EXPENSES- MAINTENANCE (o)
701	Salaries and Wages - Employees	\$ _____	\$ _____	\$ _____	\$ _____	\$ _____	\$ _____
703	Salaries and Wages - Officers, Directors and Majority Stockholders	_____	_____	_____	_____	_____	_____
704	Employee Pensions and Benefits	_____	_____	_____	_____	_____	_____
710	Purchased Sewage Treatment	_____	_____	_____	_____	_____	_____
711	Sludge Removal Expense	_____	_____	_____	_____	_____	_____
715	Purchased Power	_____	_____	_____	_____	_____	_____
716	Fuel for Power Purchased	_____	_____	_____	_____	_____	_____
718	Chemicals	_____	_____	_____	_____	_____	_____
720	Materials and Supplies	_____	2,899	_____	_____	_____	_____
731	Contractual Services-Engineering	_____	0	_____	_____	_____	_____
732	Contractual Services - Accounting	_____	_____	_____	_____	_____	_____
733	Contractual Services - Legal	_____	_____	_____	_____	_____	_____
734	Contractual Services - Mgt. Fees	_____	_____	_____	_____	_____	_____
735	Contractual Services - Testing	_____	_____	_____	_____	_____	_____
736	Contractual Services - Other	_____	_____	_____	_____	_____	_____
741	Rental of Building/Real Property	_____	_____	_____	_____	_____	_____
742	Rental of Equipment	_____	_____	_____	_____	_____	_____
750	Transportation Expenses	_____	_____	_____	_____	_____	_____
756	Insurance - Vehicle	_____	_____	_____	_____	_____	_____
757	Insurance - General Liability	_____	_____	_____	_____	_____	_____
758	Insurance - Workman's Comp.	_____	_____	_____	_____	_____	_____
759	Insurance - Other	_____	_____	_____	_____	_____	_____
760	Advertising Expense	_____	_____	_____	_____	_____	_____
766	Regulatory Commission Expenses - Amortization of Rate Case Expense	_____	18,779	_____	_____	_____	_____
767	Regulatory Commission Exp.-Other	_____	0	_____	_____	_____	_____
770	Bad Debt Expense	35,718	_____	_____	_____	_____	_____
775	Miscellaneous Expenses	_____	162,961	_____	_____	_____	_____
Total Wastewater Utility Expenses		\$ 35,718	\$ 184,639	\$ 0	\$ 0	\$ 0	\$ 0

YEAR OF REPORT
December 31, 2020

UTILITY NAME: Ni Florida, Inc.

SYSTEM NAME / COUNTY : Hudson / Pasco County

CALCULATION OF THE WASTEWATER SYSTEM METER EQUIVALENTS

WATER METER SIZE (a)	TYPE OF WATER METER (b)	EQUIVALENT FACTOR (c)	NUMBER OF WATER METERS (d)	TOTAL NUMBER OF METER EQUIVALENTS (c x d) (e)
All Residential		1.0	2,654	2,654.0
5/8"	Displacement	1.0		0.0
3/4"	Displacement	1.5	124	186.0
1"	Displacement	2.5	13	32.5
1 1/2"	Displacement or Turbine	5.0	9	45.0
2"	Displacement, Compound or Turbine	8.0	8	64.0
3"	Displacement	15.0	2	30.0
3"	Compound	16.0		
3"	Turbine	17.5		
4"	Displacement or Compound	25.0	1	25.0
4"	Turbine	30.0		
6"	Displacement or Compound	50.0	1	50.0
6"	Turbine	62.5		
8"	Compound	80.0		
8"	Turbine	90.0		
10"	Compound	115.0		
10"	Turbine	145.0		
12"	Turbine	215.0		
Total Wastewater System Meter Equivalents				<u>3,086.5</u>

CALCULATION OF THE WASTEWATER SYSTEM EQUIVALENT RESIDENTIAL CONNECTIONS

Provide a calculation used to determine the value of one wastewater equivalent residential connection (ERC).

Use one of the following methods:

- (a) If actual flow data are available from the preceding 12 months, divide the total annual single family residence (SFR) gallons sold by the average number of single family residence customers for the same period and divide the result by 365 days.
- (b) If no historical flow data are available, use:

$$ERC = (\text{Total SFR gallons treated (Omit 000)} / 365 \text{ days} / 280 \text{ gallons per day})$$

For wastewater only utilities:

Subtract all general use and other non residential customer gallons from the total gallons treated.

Divide the remainder (SFR customers) by 365 days to reveal single family residence customer gallons per day.

NOTE: Total gallons treated includes both treated and purchased treatment.

ERC Calculation:

$$ERC = (158208 \text{ thousand gallons sold} / 365 \text{ days} / 173 \text{ gallons per day}) = 2,505.5 \text{ ERCs}$$

YEAR OF REPORT December 31, 2020
--

UTILITY NAME: Ni Florida, Inc.
SYSTEM NAME / COUNTY : Hudson / Pasco County

WASTEWATER TREATMENT PLANT INFORMATION
 Provide a separate sheet for each wastewater treatment facility

Permitted Capacity	N/A (3)		
Basis of Permit Capacity (1)	N/A (3)		
Manufacturer	N/A (3)		
Type (2)	N/A (3)		
Hydraulic Capacity	N/A (3)		
Average Daily Flow	0		
Total Gallons of Wastewater Treated	0		
Method of Effluent Disposal	Purchased Sewage Pasco County		

- (1) Basis of permitted capacity as stated on the Florida DEP WWTP Operating Permit (i.e. average annual daily flow, etc.)
- (2) Contact stabilization, advanced treatment, etc.
- (3) All sewage is transmitted for treatment to the Pasco County sub-regional wastewater plant; therefore permitted capacity, basis, manufacturer, type and hydraulic capacity questions are not applicable.

UTILITY NAME: Ni Florida, Inc.
SYSTEM NAME / COUNTY : Hudson / Pasco County

OTHER WASTEWATER SYSTEM INFORMATION

Furnish information below for each system. A separate page should be supplied where necessary.

1. Present number of ERCs* now being served 3,086.5
2. Maximum number of ERCs* which can be served 4,300
3. Present system connection capacity (in ERCs*) using existing lines 4,300
4. Future connection capacity (in ERCs*) upon service area buildout 7,500
5. Estimated annual increase in ERCs* 50
6. Describe any plans and estimated completion dates for any enlargements or improvements of this system
N/A
7. If the utility uses reuse as a means of effluent disposal, attach a list of the reuse end users and the amount of reuse provided to each, if known. N/A
8. If the utility does not engage in reuse, has a reuse feasibility study been completed? No
If so, when? N/A
9. Has the utility been required by the DEP or water management district to implement reuse? No
If so, what are the utility's plans to comply with this requirement? N/A
10. When did the company last file a capacity analysis report with the DEP? Ni Florida, LLC - Hudson has never filed a DEP Report, as it pays Pasco County to treat wastewater from its Hudson area collection system.
11. If the present system does not meet the requirements of DEP rules:
 - a. Attach a description of the plant upgrade necessary to meet the DEP rules.
 - b. Have these plans been approved by DEP? N/A
 - c. When will construction begin? N/A
 - d. Attach plans for funding the required upgrading.
 - e. Is this system under any Consent Order with DEP? N/A
12. Department of Environmental Protection ID # N/A - All treatment is purchased from Pasco County

* An ERC is determined based on the calculation on S-11.

*The ERCs above treat the 4" and 6" meter bulk customers as 25 ERCs and 50 ERCs based on the S-11 meter equivalent calculation. In November 21, 2016 Order PSC-16-0525-PAA-WS, the Florida PSC found that these customers represented 380 and 201 ERCs, respectively. These 506 additional ERCs are excluded from line 1 above.

THIS PAGE LEFT

BLANK INTENTIONALLY

**Reconciliation of Revenue to
Regulatory Assessment Fee Revenue
Water Operations
Class A & B**

**Company: Ni Florida (Tamiami)
For the Year Ended December 31, 2020**

(a)	(b)	(c)	(d)
Accounts	Gross Water Revenues Per Sch. W-9	Gross Water Revenues Per RAF Return	Difference (b) - (c)
Gross Revenue:			
Unmetered Water Revenues (460)	\$ _____	\$ _____	\$ _____
Total Metered Sales (461.1 - 461.5)	\$ 269,317	\$ 269,317	\$ 0
Total Fire Protection Revenue (462.1 - 462.2)	_____	_____	_____
Other Sales to Public Authorities (464)	_____	_____	_____
Sales to Irrigation Customers (465)	_____	_____	_____
Sales for Resale (466)	_____	_____	_____
Interdepartmental Sales (467)	_____	_____	_____
Total Other Water Revenues (469 - 474)	\$ 4,052	\$ 4,052	\$ -
Total Water Operating Revenue	\$ 273,369	\$ 273,369	\$ 0
LESS: Expense for Purchased Water from FPSC-Regulated Utility	\$ -	\$ -	\$ -
Net Water Operating Revenues	\$ 273,369	\$ 273,369	\$ 0

Explanations:

Instructions:

For the current year, reconcile the gross water revenues reported on Schedule W-9 with the gross water revenues reported on the company's regulatory assessment fee return. Explain any differences reported in column (d).

