

CLASS "B"

WATER and/or SEWER UTILITIES

(Gross Revenue of \$150,000 or More but Less Than \$750,000 Each)

ANNUAL REPORT

OF

WS709
Lake Placid Utilities, Inc.
Utilities, Inc.
200 Weathersfield Avenue
Altamonte Springs, FL 32714-4099

WS28

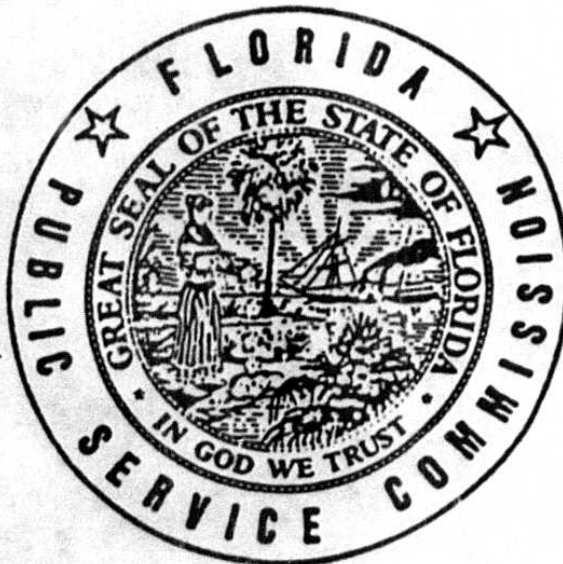
RECEIVED

MAY 03 1996

Florida Public Service Commission
Division of Water and Wastewater

414 W + 3475
Certificate Number(s)

OFFICIAL COPY
DIVISION OF
WATER AND SEWER
Do Not Remove from this Office



FOR THE
YEAR ENDED DECEMBER 31, 19 95

General Instructions

1. Prepare this report in conformity with the 1984 National Association of Regulatory Utility Commissioners Uniform System of Accounts for Water and/or Sewer Utilities.
2. Interpret all accounting words and phrases in accordance with the USOA.
3. Complete each question fully and accurately, even if it has been answered in a previous annual report. Enter the word "None" where it trebly and completely states the fact.
4. For any question, section, or page which is not applicable to the respondent enter the words "Not Applicable". Do not omit any pages.
5. Where dates are called for, the month and day should be stated as well as the year.
6. All schedules requiring dollar entries should be rounded to the nearest dollar unless otherwise specifically indicated.
7. Complete this report by means which result in a permanent record, such as by typewriter.
8. If there is not enough room on any schedule, an additional page or pages may be added provided the format of the added schedule matches the format of the schedule with not enough room. Such a schedule should reference the appropriate schedules, state the name of the utility, and state the year of the report.
9. If it is necessary or desirable to insert additional statements for the purpose of further explanation of schedules, such statement should be made at the bottom of the page or an additional page inserted. Any additional pages should state the name of the utility, the year of the report, and reference the appropriate schedule.
10. The report should be filled out in quadruplicate and the original and and two copies returned by March 31 of the year following the date of the report. The report should be returned to:

Florida Public Service Commission
Division of Water and Sewer
101 East Gaines Street
Tallahassee, Florida 32399-0873

TABLE OF CONTENTS

| Schedule | Page | Schedule | Page |
|--|------|--|------|
| ----- Executive Summary ----- | | | |
| Certification | E-1 | Directors and Affiliates | E-7 |
| General Information | E-2 | Affiliation of Officers & Directors | E-8 |
| Directory of Personnel Who Contact The Fla. Public Service Commission | E-3 | Businesses Which Are A Byproduct, Coproduct or Joint Product Result of Providing Service | E-9 |
| Company Profile | E-4 | Business Transactions With Related Parties - Part I and II | E-10 |
| Parent/Affiliate Organization Chart | E-5 | Composite of Statistics | E-11 |
| Compensation of Officers & Directors | E-6 | | |
| Business Contracts With Officers, | | | |
| ----- Financial Section ----- | | | |
| Comparative Balance Sheet - Assets and Other Debits | F-1 | Companies | F-13 |
| Comparative Balance Sheet - Equity Capital and Liabilities | F-2 | Capital Stock | F-14 |
| Comparative Operating Statement | F-3 | Long Term Debt | F-14 |
| Schedule of Year End Rate Base | F-4 | Statement of Retained Earnings | F-15 |
| Utility Plant | F-5 | Bonds | F-16 |
| Utility Plant Acquisition Adjustments | F-5 | Advances from Associated Companies | F-16 |
| Accumulated Depreciation | F-6 | Accrued Taxes | F-17 |
| Accumulated Amortization | F-6 | Accrued Interest | F-18 |
| Nonutility Property | F-7 | Regulatory Commission Expense - Amortization of Rate Case Expense | F-18 |
| Special Deposits | F-7 | Misc. Current & Accrued Liabilities | F-19 |
| Investments and Special Funds | F-8 | Advances For Construction | F-19 |
| Accounts and Notes Receivable - Net | F-9 | Contributions In Aid Of Construction | F-20 |
| Accounts Receivable from Associated Companies | F-10 | Additions to CIAC Received from Capacity, Main Extension and Customer Connection Charges | F-21 |
| Notes Receivable from Associated Companies | F-10 | Accum. Amortization of C.I.A.C. | F-21 |
| Prepayments | F-11 | Additions to CIAC Received from All Developers or Contractors | |
| Miscellaneous Deferred Debits | F-11 | Agreements | F-22 |
| Unamortized Debt Discount and Expense and Premium on Debt | F-12 | Reconciliation of Reported Net Income With Taxable Income For | |
| Extraordinary Property Losses | F-12 | Federal Income Taxes | F-23 |
| Notes Payable | F-13 | AFUDC Calculation | F-24 |
| Accounts Payable to Associated | | AFUDC Capital Structure Adjustments | F-25 |
| ----- Water Operation Section ----- | | | |
| Water Utility Plant Accounts | W-1 | Statistics | W-6 |
| Water Utility Expense Accounts | W-2 | Water Treatment Plant, Mains, Services and Meters | W-7 |
| Water Operating Revenue | W-3 | Wells and Well Pumps, Reservoirs, and High Service Pumping | W-8 |
| Basis for Water Depreciation Charges | W-4 | Other Water System Information | W-9 |
| Analysis of Entries in Water Depreciation Reserve | W-5 | Calculation of ERC's | W-10 |
| Pumping and Purchased Water | | | |
| ----- Sewer Operation Section ----- | | | |
| Sewer Utility Plant Accounts | S-1 | Pumping Equipment and Service Connections | S-6 |
| Sewer Utility Expense Accounts | S-2 | Collecting and Force Mains | S-7 |
| Sewer Operating Revenue | S-3 | Other Sewer System Information | S-8 |
| Basis for Sewer Depreciation Charges | S-4 | Calculation of ERC's | S-9 |
| Analysis of Entries in Sewer Depreciation Reserve | S-5 | | |

EXECUTIVE

SUMMARY

CERTIFICATION OF ANNUAL REPORT

YEAR OF REPORT
DECEMBER 31, 1995

UTILITY NAME: LAKE PLACID UTILITIES INC.

I HEREBY CERTIFY, to the best of my knowledge and belief:

YES NO
(X) () 1. The utility is in substantial compliance with the Uniform System of Accounts prescribed by the Florida Public Service Commission.

YES NO
(X) () 2. The utility is in substantial compliance with all applicable rules and orders of the Florida Public Service Commission.

YES NO
(X) () 3. There have been no communications from regulatory agencies concerning noncompliance with, or deficiencies in, financial reporting practices that could have a material effect on the financial statement of the utility.

YES NO
(X) () 4. The annual report fairly represents the financial condition and results of operations of the respondent for the period presented and other information and statements presented in the report as to the business affairs of the respondent are true, correct and complete for the period for which it represents.

Items Certified

1. 2. 3. 4.
() () () () _____ *
(signature of chief executive officer of the utility)

1. 2. 3. 4.
(X) (X) (X) (X) _____ *
(signature of chief financial officer of the utility)

* Each of the four items must be certified YES or NO. Each item need not be certified by both officers. The items being certified by the officer should be indicated in the appropriate area to the left of the signature.

NOTICE: Section 837.06, Florida Statutes, provides that any person who knowingly makes a false statement in writing with the intent to mislead a public servant in the performance of his duty shall be guilty of a misdemeanor of the second degree.

ANNUAL REPORT OF

LAKE PLACID UTILITIES INC.
(Exact Name of Utility)

List below the exact mailing address of the utility for which normal correspondence should be sent:

2335 SANDERS ROAD
NORTHBROOK, IL 60062

Telephone: (847) 498-6440

Name and address of person to whom correspondence concerning this report should be addressed:

DOUGLAS P. TROY
2335 SANDERS ROAD
NORTHBROOK, IL 60062

Telephone: (847) 498-6440

List below the address of where the utility's books and records are located:

LAKE PLACID UTILITIES INC.
2335 SANDERS ROAD
NORTHBROOK, IL 60062

Telephone: (847) 498-6440

List below any groups auditing or reviewing the records and operations:

ARTHUR ANDERSEN LLP

Date of original organization of the utility: 1969

Check the appropriate business entity of the utility as filed with the Internal Revenue Service

Individual Partnership Sub S Corp 1120 Corporation

List below every corporation or person owning or holding directly or indirectly 5 percent or more of the voting securities of the utility.:

| Name | Percent Ownership |
|----------------|-------------------|
| Utilities Inc. | 100% |

UTILITY NAME: LAKE PLACID UTILITIES INC.

YEAR OR REPORT
DECEMBER 31, 1955

DIRECTORY OF PERSONNEL WHO CONTACT THE FLORIDA PUBLIC SERVICE COMMISSION

| NAME OF COMPANY REPRESENTATIVE (1) (2) | TITLE OR POSITION | ORGANIZATIONAL UNIT TITLE (3) | USUAL PURPOSE FOR CONTACT WITH FPSC |
|--|-------------------------|-------------------------------------|---|
| PATRICK J. O'BRIEN | TREASURER | | RATE CASE |
| DAVID H. DEMAREE | SECRETARY | | RATE CASE |
| ARTHUR ANDERSEN | AUDITORS | | |

- (1) Also list appropriate legal counsel, accountants and others who may not be on general payroll.
- (2) Provide individual telephone numbers if the person is not normally reached at the company.
- (3) Name of company employed by if not on general payroll.

YEAR OF REPORT
DECEMBER 31, 1995

UTILITY NAME: LAKE PLACID UTILITIES INC.

COMPANY PROFILE

Provide a brief narrative company profile which covers the following areas:

- A. Brief company history.
- B. Public services rendered.
- C. Major goals and objectives.
- D. Major operating divisions and functions.
- E. Current and projected growth patterns.
- F. Major transactions having a material effect on operations.

- A. Formed in 1969, Lake Placid Utilities, Inc. was acquired by Utilities Inc. in October of 1993.
- B. Lake Placid Utilities, Inc. performs water and wastewater services
- C. Maintain a high quality of service and earn a fair return.
- D. Only one subdivision is served
- E. We expect modest growth currently with anticipated higher growth in the future
- F. The system was purchased at the end of 1993 and is currently being brought up to Utilities Inc. standards of quality.

UTILITY NAME: LAKE PLACID UTILITIES INC.

YEAR OF REPORT
DECEMBER 31, 1995

PARENT/AFFILIATE ORGANIZATION CHART
Current as of 12/31/95

Complete below an organization chart that shows all parents and subsidiaries of the utility. The chart must also show the relationship between the utility and the affiliates listed on E-7, E-10 (a) and E-10(b).

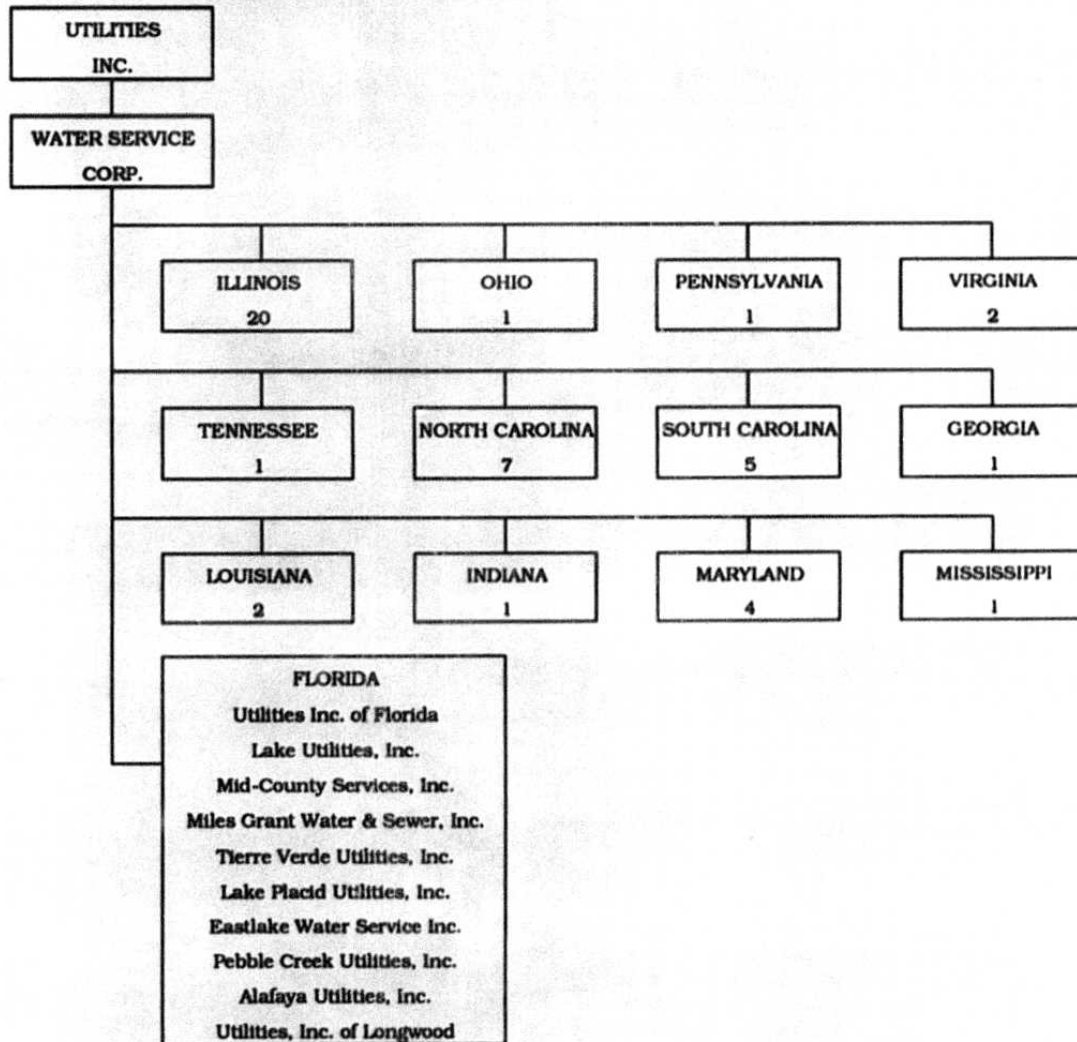
UTILITIES, INC. -- PARENT COMPANY

WATER SERVICE CORP. -- SERVICE COMPANY SUPPLYING MOST
SERVICES REQUIRED BY UTILITY.

UTILITIES INC. of FLORIDA -- provides office personnel and administrative
staff.

SEE ATTACHED

Parent And Affiliate Organizational Chart



UTILITIES, INC. - Parent Company

WATER SERVICE CORP. - Service organization providing administrative and other service functions for the utility.

NOTE: Within each state except Florida is the number of companies owned.

UTILITY NAME: LAKE PLACID UTILITIES INC.

YEAR OF REPORT
DECEMBER 31, 1995

COMPENSATION OF OFFICERS

For each officer, list the time spent on respondent as an officer compared to time spent on total business activities and the compensation received as an officer from the respondent.

| NAME (a) | TITLE (b) | % OF TIME SPENT AS OFFICER OF UTILITY (c) | OFFICERS COMPENSATION (d) |
|------------------------|----------------|---|---------------------------------|
| PERRY B. OWENS | CHAIRMAN & CEO | | % \$ NONE |
| PATRICK J. O'BRIEN | TREASURER | | % \$ |
| DAVID H. DEMAREE | SECRETARY | | % \$ NONE |
| LAWRENCE N. SCHUMACHER | PRESIDENT | | % \$ |
| | | | % \$ |
| | | | % \$ |
| | | | % \$ |
| | | | % \$ |

COMPENSATION OF DIRECTORS

For each director, list the number of director meetings attended by each director and the compensation received as a director from the respondent.

| NAME (a) | TITLE (b) | NUMBER OF DIRECTORS MEETINGS ATTENDED (c) | DIRECTORS COMPENSATION (d) |
|-------------|--------------|---|----------------------------------|
| | | | \$ NONE |
| | | | \$ NONE |
| | | | \$ NONE |
| | | | \$ NONE |
| | | | \$ NONE |
| | | | \$ NONE |
| | | | \$ NONE |
| | | | \$ NONE |
| | | | \$ NONE |
| | | | \$ NONE |

UTILITY NAME: LAKE PLACID UTILITIES INC.

YEAR OF REPORT
DECEMBER 31, 1995

BUSINESS CONTRACTS WITH OFFICERS, DIRECTORS AND AFFILIATES

List all contracts, agreements, or other business arrangements* entered into during the calendar year (other than compensation related to position with Respondents) between the Respondent and officer and director listed on page E-6. In addition, provide the same information with respect to professional services for each firm, partnership, or organization with which the officer or director is affiliated.

| NAME OF OFFICER, DIRECTOR OR AFFILIATE (a) | IDENTIFICATION OF SERVICE OR PRODUCT (b) | AMOUNT (c) | NAME AND ADDRESS OF AFFILIATED ENTITY (d) |
|--|--|---------------|---|
| NO BUSINESS CONTRACTS, AGREEMENTS OR OTHER ARRANGEMENTS WERE ENTERED INTO DURING THE CURRENT YEAR BY THE OFFICERS LISTED ON PAGE E6, THE DIRECTORS OR AFFILIATES. | | \$ | |

*Business Agreement, for this schedule, shall mean any oral or written business deal which binds the concerned parties for products or services during the reporting year or future years. Although the Respondent and/or other companies will benefit from the arrangement, the officer or director is, however, acting on his behalf or for the benefit of other companies or persons.

UTILITY NAME: LAKE PLACID UTILITIES INC.

YEAR OF REPORT
DECEMBER 31, 1995

AFFILIATION OF OFFICERS AND DIRECTORS

For each of the officials listed on page E-6, list the principle occupation or business affiliation and all affiliations or connections with any other business or financial organizations, firms, or partnerships. For purposes of this part, an official will be considered to have an affiliation with any business or financial organization, firm or partnership in which he is an officer, director, trustee, partner, or a person exercising similar functions.

| NAME (a) | PRINCIPLE OCCUPATION OR BUSINESS AFFILIATION (b) | AFFILIATION OR CONNECTION (c) | NAME AND ADDRESS OF AFFILIATION OR CONNECTION (d) |
|---|--|--|--|
| <p>THE OFFICIALS LISTED ON PAGE E6 HAVE NO OTHER PRINCIPLE OCCUPATION OR BUSINESS AFFILIATION OR CONNECTIONS WITH ANY OTHER BUSINESS OR FINANCIAL ORGANIZATIONS, FIRMS, OR PARTNERSHIPS DURING THE REPORTED YEAR.</p> | | | |

UTILITY NAME: LAKE PLACID UTILITIES INC.

| |
|-------------------------------------|
| YEAR OF REPORT DECEMBER 31, 1995 |
|-------------------------------------|

BUSINESSES WHICH ARE A BYPRODUCT, COPRODUCT OR JOINT PRODUCT RESULT
OF PROVIDING WATER OR SEWER SERVICE

Complete the following for any business which is conducted as a byproduct, coproduct or joint product as a result of providing water and/or sewer service. This would include any business which requires the use of utility land and facilities. Examples of these types of businesses would be orange groves, nurseries, tree farms, fertilizer manufacturing, etc. This would not include any business for which the assets are properly included in Account 121 - Nonutility Property along with the associated revenues and expenses segregated out as nonutility also.

| BUSINESS OR SERVICE CONDUCTED (a) | ASSETS | | REVENUES | | EXPENSES | |
|--|----------------------------|------------------|---------------------------|------------------|--------------------------|------------------|
| | BOOK COST OF ASSETS (b) | ACCT. NO. (c) | REVENUES GENERATED (d) | ACCT. NO. (e) | EXPENSES INCURRED (f) | ACCT. NO. (g) |
| NO BUSINESS WHICH ARE A BYPRODUCT, COPRODUCT OR JOINT PRODUCT RESULTING FROM PROVIDING WATER AND/OR SEWER SERVICE. | \$ | | \$ | | \$ | |

UTILITY NAME: LAKE PLACID UTILITIES INC.

| |
|-------------------------------------|
| YEAR OF REPORT DECEMBER 31, 1995 |
|-------------------------------------|

BUSINESS TRANSACTIONS WITH RELATED PARTIES

List each contract, agreement, or other business transaction exceeding a cumulative amount of \$500 in any one year, entered into between the Respondent and a business or financial organization, firm, or partnership named on pages E-2 and E-6 identifying the parties, amounts, dates and product, asset, or service involved.

Part I. Specific Instructions: Services and Products Received or Provided

1. Enter in this part all transactions involving services and products received or provided.
2. Below are some types of transactions to include:
 - management, legal and accounting services
 - computer services
 - engineering & construction services
 - repairing and servicing of equipment
 - material and supplies furnished
 - leasing of structures, land and equipment
 - rental transactions
 - sale, purchase or transfer of various products

| NAME OF COMPANY OR RELATED PARTY (a) | DESCRIPTION SERVICE AND/OR NAME OF PRODUCT (b) | CONTRACT OR AGREEMENT EFFECTIVE DATES (c) | ANNUAL CHARGES | |
|--|---|---|-------------------------------------|------------------|
| | | | (P)urchased/ or (S)old (d) | /AMOUNT / (e) |
| WATER SEVICE CORP | Operators Salaries & Benefits | Continuous | P | \$ 6,391 |
| | Insurance | Continuous | P | 881 |
| | Computer Operations | Continuous | P | 1,102 |
| | Supplies & Postage | Continuous | P | 1,331 |
| | Outside Services | Continuous | P | 998 |
| | Management Services | Continuous | P | 6,660 |

BUSINESS TRANSACTIONS WITH RELATED PARTIES (Cont'd)

Part II. Specific Instructions: Sale, Purchase and Transfer of Assets

1. Enter in this part all transactions r&l The columnar instructions follow:
to the purchase, sale or transfer of assets.
2. Below are examples of some types of transactions to include:
- purchase, sale or transfer of equipmer
 - purchase, sale or transfer of land and structures.
 - purchase, sale or transfer of securiti
 - noncash transfers of assets.
 - noncash dividends other than stock dividends.
 - writeoff of bad debts or loans.
- (a) Enter name of related party or company.
 (b) Describe briefly the type of assets purchased, sold or transferred.
 (c) Enter the total received or paid. Indicate purchase with "P" and sale with "S".
 (d) Enter the net book value for each item reported.
 (e) Enter the net profit or loss for each item (column (c) - column (d)).
 (f) Enter the fair market value for each item reported. In space below or in a supplemental schedule, describe the basis used to calculate fair market value.

| NAME OF COMPANY OR RELATED PARTY (a) | DESCRIPTION OF ITEMS (b) | SALE OR PURCHASE PRICE (c) | NET BOOK VALUE (d) | GAIN OR LOSS (e) | FAIR MARKET VALUE (f) |
|---|-----------------------------|-------------------------------|-----------------------|---------------------|--------------------------|
| NO ASSETS WERE SOLD, PURCHASED OR TRANSFERRED WITH A RELATED PARTY DURING THE FISCAL YEAR ENDED DECEMBER 31, 1995 | | \$ | \$ | \$ | \$ |

YEAR OF REPORT
DECEMBER 31, 1995

UTILITY NAME: LAKE PLACID UTILITIES INC.

COMPOSITE STATISTICS FOR ALL
PRIVATELY OWNED WATER AND SEWER UTILITIES UNDER AGENCY JURISDICTION

| DESCRIPTION (a) | WATER (b) | SEWER (c) |
|--|--------------|--------------|
| PLANT (Intrastate Only) (000's Omitted): | | |
| Plant in Service | \$ 196 | \$ 362 |
| Construction Work In Progress | | - |
| Plant Acquisition Adjustment | | |
| Plant Held For Future Use | | |
| Materials and Supplies | | |
| Less: | | |
| Accumulated Depreciation and Accumulated Amortization | 29 | 207 |
| Contributions In Aid Of Construction (NET) | 52 | 63 |
| Net Book Cost | \$ 115 | \$ 92 |
| REVENUES AND EXPENSES (Intrastate Only) (000's Omitted): | | |
| Operating Revenues | \$ 18 | \$ 23 |
| Depreciation and Amortization Expense | \$ 3 | \$ 6 |
| Income Tax Expense | (3) | (9) |
| Taxes Other Than Income | 3 | 3 |
| Other Operating Expenses | 17 | 31 |
| Total Operating Expenses | \$ 20 | \$ 32 |
| Net Operating Income | \$ (2) | \$ (9) |
| Other Income | \$ 1 | \$ 2 |
| Other Income Deductions | 4 | 5 |
| Net Income | \$ (5) | \$ (13) |
| CUSTOMERS (Intrastate Only): | | |
| Residential - Yearly Average | 121 | 187 |
| Commercial - Yearly Average | 48 | 48 |
| Industrial - Yearly Average | | |
| Others - Yearly Average | | |
| Total | 169 | 235 |
| OTHER STATISTICS (Intrastate Only): | | |
| Average Annual Residential Use Per 1,000 Gallons | | |
| Average Annual Residential Cost Per 1,000 Gallons | \$ | \$ |
| Average Residential Monthly Bill | \$ | \$ |
| Gross Plant Investment Per Customer | \$ 1,160 | \$ 1,541 |

FINANCIAL

SUMMARY

UTILITY NAME: LAKE PLACID UTILITIES INC.

YEAR OF REPORT
DECEMBER 31, 1995

COMPARATIVE BALANCE SHEET - ASSETS AND OTHER DEBITS

| ACCT. NO. (a) | ACCOUNT NAME (b) | REF. PAGE (c) | CURRENT YEAR (d) | PREVIOUS YEAR (e) |
|--------------------------------|--|---------------|-------------------|-------------------|
| UTILITY PLANT | | | | |
| 101-105 | Utility Plant | F-5 | \$ 558,317 | \$ 489,216 |
| 108-110 | Less: Accumulated Depreciation and Amortization | F-6 | <u>236,249</u> | <u>218,744</u> |
| | Net Plant | | \$ <u>322,068</u> | \$ <u>270,472</u> |
| 114-115 | Utility Plant Acquisition Adjustments (Net) | F-5 | (26,737) | (27,306) |
| | Other Plant Adj. (Specify) | | | \$ |
| | Total Net Utility Plant | | \$ <u>295,331</u> | \$ <u>243,166</u> |
| OTHER PROPERTY AND INVESTMENTS | | | | |
| 121 | Nonutility Property | F-7 | \$ | \$ |
| 122 | Less: Accumulated Depreciation and Amortization | | | |
| | Net Nonutility Property | | \$ | \$ |
| 123 | Investment In Associated Companies | F-8 | | |
| 124 | Utility Investments | F-8 | | |
| 125 | Other Investments | F-8 | | |
| 127 | Other Special Funds | F-8 | | |
| | Total Other Property & Investments | | \$ | \$ |
| CURRENT AND ACCRUED ASSETS | | | | |
| 131 | Cash | | \$ 0 | \$ 0 |
| 132 | Special Deposits | F-7 | 1,265 | 1,265 |
| 134 | Working Funds | | | |
| 135 | Temporary Cash Investments | | | |
| 141-144 | Accounts and Notes Receivable, Less Accumulated Provision for Uncollectible Accounts | F-9 | 8,024 | 2,729 |
| 145 | Accounts Receivable from Associated Companies | F-10 | | |
| 146 | Notes Receivable from Associated Companies | F-10 | | |
| 151 | Material and Supplies | | | |
| 162 | Prepayments | F-11 | 0 | 28 |
| 171 | Accrued Interest and Dividends Receivable | | 0 | 0 |
| 174 | Misc. Current and Accrued Assets | | <u>0</u> | <u>0</u> |
| | Total Current and Accrued Assets | | \$ <u>9,289</u> | \$ <u>4,022</u> |

UTILITY NAME: LAKE PLACID UTILITIES INC.

| |
|-------------------------------------|
| YEAR OF REPORT DECEMBER 31, 1995 |
|-------------------------------------|

COMPARATIVE BALANCE SHEET - ASSETS AND OTHER DEBITS

| ACCT. NO. (a) | ACCOUNT NAME (b) | REF. PAGE (c) | CURRENT YEAR (d) | PREVIOUS YEAR (e) |
|-----------------|-------------------------------------|---------------|------------------|-------------------|
| DEFERRED DEBITS | | | | |
| 181 | Unamortized Debt Discount & Expense | F-12 | \$ | \$ |
| 182 | Extraordinary Property Losses | F-12 | | |
| 186 | Misc. Deferred Debits | F-11 | 21,722 | 2,748 |
| 190 | Accumulated Deferred Income Taxes | | 7,316 | 5,434 |
| | Total Deferred Debits | | \$ 29,038 | \$ 8,182 |
| | TOTAL ASSETS AND OTHER DEBITS | | \$ 333,658 | \$ 255,370 |

NOTES TO THE BALANCE SHEET

The space below is provided for important notes regarding the balance sheet.

UTILITY NAME: LAKE PLACID UTILITIES INC.

YEAR OF REPORT
DECEMBER 31, 1995

COMPARATIVE BALANCE SHEET - EQUITY CAPITAL AND LIABILITIES

| ACCT. NO. (a) | ACCOUNT NAME (b) | REF. PAGE (c) | CURRENT YEAR (d) | PREVIOUS YEAR (e) |
|---------------------------------|---|------------------|---------------------|----------------------|
| EQUITY CAPITAL | | | | |
| 201 | Common Stock Issued | F-14 | \$ 1,000 | \$ 1,000 |
| 204 | Preferred Stock Issued | F-14 | | |
| 211 | Other Paid-In Capital | | 222,974 | 55,000 |
| 212 | Discount on Capital Stock | | | |
| 213 | Capital Stock Expense | | | |
| 214-215 | Retained Earnings | F-15 | (46,023) | (28,712) |
| 216 | Reacquired Capital Stock | | | |
| 218 | Proprietary Capital (Proprietorship and Partnership Only) | | | |
| | Total Equity Capital | | \$ 177,951 | \$ 27,288 |
| LONG TERM DEBT | | | | |
| 221 | Bonds | F-16 | \$ | \$ |
| 223 | Advances from Associated Companies | F-16 | | |
| 224 | Other Long Term Debt | F-14 | | |
| | Total Long Term Debt | | \$ | \$ |
| CURRENT AND ACCRUED LIABILITIES | | | | |
| 231 | Accounts Payable | | \$ 170 | \$ (1,216) |
| 232 | Notes Payable | F-13 | | |
| 233 | Accounts Payable to Associated Co. | F-13 | 27,889 | 109,966 |
| 234 | Notes Payable to Associated Co. | F-13 | | |
| 235 | Customer Deposits | | 708 | 300 |
| 236 | Accrued Taxes | F-17 | (4,280) | (1,372) |
| 237 | Accrued Interest | F-18 | 43 | 12 |
| 238 | Accrued Dividends | | | |
| 239 | Matured Long Term Debt | | | |
| 240 | Matured Interest | | | |
| 241 | Miscellaneous Current and Accrued Liabilities | F-19 | | |
| | Total Current and Accrued Liabilities | | \$ 24,530 | \$ 107,689 |

UTILITY NAME: LAKE PLACID UTILITIES INC.

YEAR OF REPORT
DECEMBER 31, 1995

COMPARATIVE BALANCE SHEET - EQUITY CAPITAL AND LIABILITIES

| ACCT. NO. (a) | ACCOUNT NAME (b) | REF. PAGE (c) | CURRENT YEAR (d) | PREVIOUS YEAR (e) |
|--------------------------------------|---|---------------------|------------------------|-------------------------|
| DEFERRED CREDITS | | | | |
| 251 | Unamortized Premium on Debt | F-12 | \$ | \$ |
| 252 | Advances for Construction | F-19 | | |
| 253 | Other Deferred Credits | | | |
| 255 | Accumulated Deferred Investment Tax Credits | | | |
| | Total Deferred Credits | | \$ 0 | \$ 0 |
| OPERATING RESERVES | | | | |
| 261 | Property Insurance Reserve | | \$ | \$ |
| 262 | Injuries and Damages Reserve | | | |
| 263 | Pensions and Benefits Reserve | | | |
| 265 | Miscellaneous Operating Reserves | | | |
| | Total Operating Reserves | | \$ | \$ |
| CONTRIBUTIONS IN AID OF CONSTRUCTION | | | | |
| 271 | Contributions In Aid of Construction | F-20 | \$ 185,203 | \$ 178,667 |
| 272 | Accumulated Amortization of Contri- butions In Aid of Construction | F-21 | 70,850 | 64,945 |
| | Total Net C.I.A.C. | | \$ 114,353 | \$ 113,722 |
| ACCUMULATED DEFERRED INCOME TAXES | | | | |
| 281 | Accumulated Deferred Income Taxes - Accelerated Depreciation | | \$ 576 | \$ 814 |
| 282 | Accumulated Deferred Income Taxes - Liberalized Depreciation | | | |
| 283 | Accumulated Deferred Income Taxes - Other | | 16,248 | 5,856 |
| | Total Accum. Deferred Income Taxes | | \$ 16,824 | \$ 6,670 |
| | TOTAL EQUITY CAPITAL AND LIABILITIES | | \$ 333,658 | \$ 255,370 |

UTILITY NAME: LAKE PLACID UTILITIES INC.

YEAR OF REPORT
DECEMBER 31, 1995

COMPARATIVE OPERATING STATEMENT

| ACCT. NO. (a) | ACCOUNT NAME (b) | PREVIOUS YEAR (c) | REF. PAGE (d) | CURRENT YEAR (e) |
|--------------------------|---|-------------------------|---------------------|------------------------|
| ----- | | | | |
| UTILITY OPERATING INCOME | | | | |
| 400 | Operating Revenues | \$ 33,303 | F-3 (b) | \$ 41,023 |
| 401 | Operating Expenses | \$ 66,817 | F-3 (b) | \$ 48,406 |
| 403 | Depreciation Expense | 7,599 | F-6 | 15,018 |
| 406 | Amortization of Utility Plant | | | |
| | Acquisition Adjustment | (1,171) | | (569) |
| 407 | Amortization Expense - of CIA | (5,731) | | (5,905) |
| 408.1 | Taxes Other Than Income | 8,711 | F-17 | 6,134 |
| 409.1 | Income Taxes | (19,116) | F-17 | (19,916) |
| 410.10 | Deferred Income Taxes | 233 | F-17 | 8,292 |
| 411.10 | Provision for Deferred Income Taxes Credit | | F-17 | |
| 412.10 | Investment Tax Credits Deferred to Future Periods | | F-17 | |
| 412.11 | Investment Tax Credits Restored to Operating Income | 0 | F-17 | 0 |
| | Utility Operating Expenses | \$ 57,342 | | \$ 51,460 |
| | Utility Operating Income | \$ (24,040) | | \$ (10,437) |
| 413 | Income From Utility Plant Leased to Others | | | |
| 414 | Gains (Losses) From Disposition of Utility Property | | | |
| | Total Utility Operating Income [Enter here and on Page F-3(c)] | \$ (24,040) | | \$ (10,437) |

COMPARATIVE OPERATING STATEMENT (Cont'd)

| REF. PAGE (f) | WATER (g) | REF. PAGE (h) | SEWER (i) | OTHER (j) |
|---------------------|--------------|---------------------|--------------|--------------|
| W-3 | \$ 18,155 | S-3 | \$ 22,868 | \$ |
| W-2 | \$ 17,116 | S-2 | \$ 31,290 | \$ |
| F-6 | 5,126 | F-6 | 9,892 | |
| F-5 | (285) | F-5 | (284) | |
| F-21 | (2,063) | F-21 | (3,842) | |
| F-17 | 2,712 | F-17 | 3,422 | |
| F-17 | (4,740) | F-17 | (15,176) | |
| | 1,974 | | 6,318 | |
| | - | | - | |
| | \$ 19,840 | | \$ 31,620 | \$ - |
| | \$ (1,685) | | \$ (8,752) | \$ - |
| | \$ (1,685) | | \$ (8,752) | \$ - |

UTILITY NAME: LAKE PLACID UTILITIES INC.

YEAR OF REPORT
DECEMBER 31, 1995

COMPARATIVE OPERATING STATEMENT (Cont'd)

| ACCT. NO. (a) | ACCOUNT NAME (b) | PREVIOUS YEAR (c) | REF. PAGE (d) | CURRENT YEAR (e) |
|---------------------|---|-------------------------|---------------------|------------------------|
| | Total Utility Operating Income [From Page F-3(a)] | \$ (24,040) | | \$ (10,437) |
| | OTHER INCOME AND DEDUCTIONS | | | |
| 415 | Revenues From Merchandising, Jobbing and Contract Deductions | \$ | | \$ |
| 416 | Costs and Expenses of Merchandising, Jobbing and Contract Work | | | |
| 419 | Interest and Dividend Income | | | 97 |
| 420 | Allowance for Funds Used During Construction | | | 2,695 |
| 421 | Nonutility Income | - | | |
| 426 | Miscellaneous Nonutility Expenses | | | |
| | Total Other Income and Deductions | \$ - | | \$ 2,792 |
| | TAXES APPLICABLE TO OTHER INCOME | | | |
| 408.20 | Taxes Other Than Income | \$ | F-17 | \$ |
| 409.20 | Income Taxes | | F-17 | |
| 410.20 | Provision for Deferred Income Taxes | | F-17 | |
| 411.20 | Provision for Deferred Income Taxes - Credit | | F-17 | |
| 412.20 | Investment Tax Credits - Net | | F-17 | |
| 412.30 | Investment Tax Credits Restored to Operating Income | | F-17 | |
| | Total Taxes Applicable To Other Income | \$ | | \$ |
| | INTEREST EXPENSE | | | |
| 427 | Interest Expense | \$ | F-18 | \$ 9,666 |
| 428 | Amortization of Debt Discount & Expense | | F-12 | |
| 429 | Amortization of Premium on Debt | | F-12 | |
| | Total Interest Expense | \$ - | | \$ 9,666 |
| | EXTRAORDINARY ITEMS | | | |
| 433 | Extraordinary Income | \$ | | \$ |
| 434 | Extraordinary Deductions | | | |
| 409.30 | Income Taxes, Extraordinary Items | | | |
| | Total Extraordinary Items | \$ | | \$ |
| | NET INCOME | \$ (24,040) | | \$ (17,311) |

UTILITY NAME: LAKE PLACID UTILITIES INC.

YEAR OF REPORT
DECEMBER 31, 1995

SCHEDULE OF YEAR END RATE BASE

| ACCT. NO. (a) | ACCOUNT NAME (b) | REF. PAGE (c) | WATER UTILITY (d) | SEWER UTILITY (e) |
|---------------|--|---------------|-------------------|-------------------|
| 101 | Utility Plant In Service | F-5 | \$ 196,068 | 362,249 |
| | Less: | | | |
| | Nonused and Useful Plant (1) | | | |
| 108 | Accumulated Depreciation | F-6 | 25,528 | 188,576 |
| 110 | Accumulated Amortization | F-6 | 3,327 | 18,818 |
| 271 | Contributions In Aid of Construction | F-20 | 64,685 | 120,518 |
| 252 | Advances for Construction | F-19 | | |
| | Subtotal | | \$ 102,528 | 34,337 |
| | Additions: | | | |
| 272 | Accumulated Amortization of Contributions In Aid of Construction | F-21 | 12,964 | 57,886 |
| | Subtotal | | \$ 115,492 | 92,223 |
| | Plus or Minus: | | | |
| 114 | Acquisition Adjustments (2) | F-5 | | |
| 115 | Accumulated Amortization of Acquisition Adjustments (2) | F-5 | | |
| | Working Capital Allowance (3) | | 2,140 | 3,911 |
| | Other (Specify): | | | |
| | RATE BASE | | \$ 117,631 | 96,134 |
| | UTILITY OPERATING INCOME | | \$ (1,685) | (8,752) |
| | ACHIEVED RATE OF RETURN | | -1.43% | -9.10% |

NOTES :

- (1) Estimated if not known.
- (2) Include only those Acquisition Adjustments that have been approved by the Commission.
- (3) Calculate using the Balance Sheet Method, beginning-year end average.

UTILITY NAME: LAKE PLACID UTILITIES INC.

YEAR OF REPORT
DECEMBER 31, 1995

UTILITY PLANT (ACCTS. 101 - 106)

| ACCT. NO. (a) | DESCRIPTION (b) | WATER (c) | SEWER (d) | OTHER THAN REPORTING SYSTEMS (e) | TOTAL (f) |
|-----------------|---------------------------------|------------|------------|----------------------------------|------------|
| Plant Accounts: | | | | | |
| 101 | Utility Plant In Service | \$ 196,068 | \$ 362,249 | \$ | \$ 558,317 |
| 102 | Utility Plant Leased to Others | 0 | 0 | 0 | 0 |
| 103 | Property Held for Future Use | 0 | 0 | 0 | 0 |
| 104 | Utility Plant Purchased or Sold | 0 | 0 | 0 | 0 |
| 105 | Construction Work In Progress | 0 | 0 | 0 | 0 |
| | Total Utility Plant | \$ 196,068 | \$ 362,249 | \$ | \$ 558,317 |

UTILITY PLANT ACQUISITION ADJUSTMENTS (ACCTS. 114 - 115)

Report each acquisition adjustment and related accumulated amortization separately.
For any acquisition adjustment approved by the Commission, include the Order Number

| DESCRIPTION (a) | WATER (b) | SEWER (c) | OTHER THAN REPORTING SYSTEMS (d) | TOTAL (e) |
|---------------------------------|-------------|-----------|----------------------------------|-------------|
| ACQUISITION ADJUSTMENTS (114): | | | | |
| Beginning of year | \$ (13,593) | (13,713) | \$ 0 | \$ (27,306) |
| Recording of Acquisition | 0 | 0 | 0 | 0 |
| Total Plant Acquisition Adjs. | \$ (13,593) | (13,713) | \$ 0 | \$ (27,306) |
| ACCUMULATED AMORTIZATION (115): | | | | |
| Accruals charged during year | \$ 285 | 284 | \$ | \$ 569 |
| Total Accumulated Amortization | \$ 285 | 284 | \$ 0 | \$ 569 |
| Net Acquisition Adjustments | \$ (13,308) | (13,429) | \$ | \$ (26,737) |

UTILITY NAME: LAKE PLACID UTILITIES INC.

YEAR OF REPORT
DECEMBER 31, 1995

ACCUMULATED DEPRECIATION (ACCT. 108)

| DESCRIPTION (a) | WATER (b) | SEWER (c) | OTHER THAN REPORTING SYSTEMS (d) | TOTAL (e) |
|---|--------------|--------------|---|--------------|
| Balance first of year | \$ 20,977 | \$ 197,768 | \$ | \$ 218,745 |
| Credit during year: | | | | |
| Accruals charged to Account 108 | \$ 4,604 | \$ 9,187 | \$ | \$ 13,791 |
| Accruals charged other accounts (specify) | | | | |
| Correction from prior yr. | 479 | (18,113) | | (17,634) |
| Adj per commission PSC-95-0574-FOF-WS (offset Accum/Depr) | | | | |
| Salvage | | | | |
| Other credits (specify) | | | | |
| Total credits | \$ 5,083 | \$ (8,926) | \$ 0 | \$ (3,843) |
| Debits during year: | | | | |
| Book cost of plant retired | \$ 532 | \$ 266 | \$ | \$ 798 |
| Cost of removal | 0 | 0 | | 0 |
| Other debits (specify) | 0 | | | 0 |
| Allocated from UIF | | 0 | | 0 |
| Total debits | \$ 532 | \$ 266 | \$ 0 | \$ 798 |
| Balance end of year | \$ 25,528 | \$ 188,576 | \$ 0 | \$ 214,104 |

ACCUMULATED AMORTIZATION (ACCT. 110)

| DESCRIPTION (a) | WATER (b) | SEWER (c) | OTHER THAN REPORTING SYSTEMS (d) | TOTAL (e) |
|---|--------------|--------------|---|--------------|
| Balance first of year | \$ 0 | \$ 0 | \$ 0 | \$ 0 |
| Credit during year: | | | | |
| Accruals charged to Account 110 | \$ 522 | \$ 705 | \$ 0 | \$ 1,227 |
| Other credits (specify) | | | | |
| Change in asset status | 2,805 | 18,113 | 0 | 20,918 |
| Adj per commission PSC-95-0574-FOF-WS (offset Accum/Depr) | | | | |
| Total credits | \$ 3,327 | \$ 18,818 | \$ | \$ 22,145 |
| Debits during year: | | | | |
| Book cost of plant retired | \$ 0 | \$ 0 | \$ 0 | \$ 0 |
| Other debits (specify) | | | | |
| Total debits | \$ 0 | \$ 0 | \$ 0 | \$ 0 |
| Balance end of year | \$ 3,327 | \$ 18,818 | \$ | \$ 22,145 |

UTILITY NAME: LAKE PLACID UTILITIES INC.

| |
|-------------------------------------|
| YEAR OF REPORT DECEMBER 31, 1995 |
|-------------------------------------|

NONUTILITY PROPERTY (ACCT. 121)

Report separately each item of property with a book cost of \$25,000 or more included in Account 121. Other items may be grouped by classes of property.

| DESCRIPTION (a) | BEGINNING YEAR BALANCE (b) | ADDITIONS (c) | REDUCTIONS (d) | ENDING YEAR BALANCE (e) |
|------------------------------|-------------------------------------|------------------|-------------------|----------------------------------|
| NONE | \$ | \$ | \$ | \$ |
| | | | | |
| | | | | |
| | | | | |
| | | | | |
| | | | | |
| | | | | |
| | | | | |
| | | | | |
| | | | | |
| Total Nonutility Property_ _ | \$ | \$ | \$ | \$ |

SPECIAL DEPOSITS (ACCT. 132)

Report hereunder all special deposits carried in Accounts 132.

| DESCRIPTION OF SPECIAL DEPOSITS (a) | ENDING YEAR END BOOK COST (b) |
|--|--|
| Electric Deposit - Florida Power. | \$ 1,265 |
| | |
| | |
| | |
| | |
| | |
| | |
| | |
| | |
| | |
| Total Special Deposits_ _ | \$ 1,265 |

UTILITY NAME: LAKE PLACID UTILITIES INC.

| |
|-------------------------------------|
| YEAR OF REPORT DECEMBER 31, 1995 |
|-------------------------------------|

INVESTMENTS AND SPECIAL FUNDS (ACCTS. 123 - 127)

Report hereunder all investments and special funds carried in: Accounts 123 thru 127.

| DESCRIPTION OF SECURITY OR SPECIAL FUND (a) | FACE OR PAR VALUE (b) | YEAR END BOOK COST (c) |
|--|-----------------------------|------------------------------|
| INVESTMENT IN ASSOCIATED COMPANIES (ACCT. 123): NONE | \$ - - - - - | \$ - - - - - |
| _____ | \$ - - - - - | _____ |
| _____ | \$ - - - - - | _____ |
| _____ | \$ - - - - - | _____ |
| _____ | \$ - - - - - | _____ |
| Total Investment In Associated Companies | | \$ _____ |
| ----- | | |
| UTILITY INVESTMENTS (ACCT. 124): NONE | \$ - - - - - | \$ - - - - - |
| _____ | \$ - - - - - | _____ |
| _____ | \$ - - - - - | _____ |
| _____ | \$ - - - - - | _____ |
| _____ | \$ - - - - - | _____ |
| Total Utility Investments | | \$ _____ |
| ----- | | |
| OTHER INVESTMENTS (ACCT. 125): NONE | \$ - - - - - | \$ - - - - - |
| _____ | \$ - - - - - | _____ |
| _____ | \$ - - - - - | _____ |
| _____ | \$ - - - - - | _____ |
| _____ | \$ - - - - - | _____ |
| Total Other Investments | | \$ _____ |
| ----- | | |
| SPECIAL FUNDS (ACCT. 127): NONE | \$ - - - - - | \$ - - - - - |
| _____ | \$ - - - - - | _____ |
| _____ | \$ - - - - - | _____ |
| _____ | \$ - - - - - | _____ |
| _____ | \$ - - - - - | _____ |
| _____ | \$ - - - - - | _____ |
| | | \$ _____ |

UTILITY NAME: LAKE PLACID UTILITIES INC.

| |
|-------------------------------------|
| YEAR OF REPORT DECEMBER 31, 1995 |
|-------------------------------------|

ACCOUNTS AND NOTES RECEIVABLE - NET (ACCTS. 141 - 144)

Report hereunder all accounts and notes receivable included in Accounts 141, 142 and 144. Amounts included in Accounts 142 and 144 should be listed individually.

| DESCRIPTION (a) | TOTAL (b) |
|--|--------------|
| ACCOUNTS RECEIVABLE: | |
| Customer Accounts Receivable (Acct. 141): | |
| Water | \$ 3,356 |
| Sewer | 4,668 |
| Other | |
| Total Customer Accounts Receivable | \$ 8,024 |
| OTHER ACCOUNTS RECEIVABLE (Acct. 142): | |
| | \$ |
| | |
| | |
| Total Other Accounts Receivable | 0 |
| NOTES RECEIVABLE (Acct. 144): | |
| | \$ |
| | |
| | |
| Total Notes Receivable | 0 |
| Total Accounts and Notes Receivable | \$ 8,024 |
| ACCUMULATED PROVISION FOR UNCOLLECTIBLE ACCOUNTS (Acct. 143): | |
| Balance first of year | \$ |
| Add: Provision for uncollectibles for current year | \$ |
| Collections of accounts previously written off | |
| Utility accounts | |
| Others | |
| Total Additions | \$ |
| Deduct accounts written off during year: | |
| Utility Accounts | \$ |
| Others | |
| Total accounts written off | \$ |
| Balance end of year | \$ 0 |
| Total Accounts and Notes Receivable - Net | \$ 8,024 |

UTILITY NAME: LAKE PLACID UTILITIES INC.

YEAR OF REPORT
DECEMBER 31, 1995

ACCOUNTS RECEIVABLE FROM ASSOCIATED COMPANIES (ACCT. 145)

Report each account receivable from associated companies separately.

| DESCRIPTION (a) | TOTAL (b) |
|--------------------|--------------|
| ----- | ----- |
| NONE | \$ |
| ----- | ----- |
| ----- | ----- |
| ----- | ----- |
| ----- | ----- |
| ----- | ----- |
| Total | \$ |

NOTES RECEIVABLE FROM ASSOCIATED COMPANIES (ACCT. 146)

Report each note receivable from associated companies separately.

| DESCRIPTION | INTEREST RATE (b) | TOTAL (c) |
|-------------|-------------------------|--------------|
| ----- | ----- | ----- |
| NONE | \$ | \$ |
| ----- | \$ | |
| ----- | \$ | |
| ----- | \$ | |
| ----- | \$ | |
| ----- | \$ | |
| ----- | \$ | |
| Total | \$ | \$ |

UTILITY NAME: LAKE PLACID UTILITIES INC.

YEAR OF REPORT
DECEMBER 31, 1995

PREPAYMENTS (ACCT. 162)

| DESCRIPTION (a) | TOTAL (b) |
|------------------------------------|--------------|
| Prepaid Insurance ----- NONE ----- | \$ |
| Prepaid Rents ----- | |
| Prepaid Interest ----- | |
| Prepaid Taxes ----- | |
| Other Prepayments (Specify): | |
| Misc ----- | 0 |
| ----- | |
| ----- | |
| Total Prepayments ----- | \$ 0 |

MISCELLANEOUS DEFERRED DEBITS (ACCT. 186)

| DESCRIPTION (a) | TOTAL (b) |
|--|---|
| MISCELLANEOUS DEFERRED DEBITS (Acct. 186): | |
| Deferred Rate Case Expense (Acct. 186.1) ----- | \$ 21,313 |
| Other Deferred Debits (Acct. 186.2) ----- | 409 |
| | <hr style="width: 50%; margin-left: auto; margin-right: 0;"/> |
| Total Miscellaneous Deferred Debits ----- | \$ 21,722 |

UTILITY NAME: LAKE PLACID UTILITIES INC.

YEAR OF REPORT
DECEMBER 31, 1995

UNAMORTIZED DEBT DISCOUNT AND EXPENSE AND PREMIUM ON DEBT (ACCTS. 181 and 251)

Report the net discount and expense or premium separately for each security issue.

| DESCRIPTION (a) | AMOUNT WRITTEN OFF DURING YEAR (b) | YEAR END BALANCE (c) |
|--|---|----------------------------|
| UNAMORTIZED DEBT DISCOUNT AND EXPENSE (Acct. 181): | | |
| NONE | \$ ----- | \$ ----- |
| | \$ ----- | \$ ----- |
| | \$ ----- | \$ ----- |
| Total Unamortized Debt Discount and Expense | \$ ----- | \$ ----- |
| UNAMORTIZED PREMIUM ON DEBT (Acct. 251): | | |
| | \$ ----- | \$ ----- |
| | \$ ----- | \$ ----- |
| | \$ ----- | \$ ----- |
| Total Unamortized Premium on Debt | \$ ----- | \$ ----- |

EXTRAORDINARY PROPERTY LOSSES (ACCT. 182)

Report each item separately.

| DESCRIPTION (a) | TOTAL (b) |
|--|--------------|
| EXTRAORDINARY PROPERTY LOSSES (Acct. 182): | |
| NONE | \$ ----- |
| | \$ ----- |
| | \$ ----- |
| | \$ ----- |
| Total Extraordinary Property Losses | \$ ----- |

UTILITY NAME: LAKE PLACID UTILITIES INC.

YEAR OF REPORT
DECEMBER 31, 1995

NOTES PAYABLE (ACCTS. 232 and 234)

| DESCRIPTION (a) | NOMINAL DATE OF ISSUE (b) | DATE OF MATURITY (c) | INTEREST | | PRINCIPAL AMOUNT PER BALANCE \$ (f) |
|--|---------------------------------------|-------------------------------|-------------|--------------------------------|--|
| | | | RATE (d) | FREQUENCY OF PAYMENT (e) | |
| ACCOUNT 232 - NOTES PAYABLE: | | | | | |
| NONE | --- | --- | --- | % | \$ |
| _____ | --- | --- | --- | % | |
| _____ | --- | --- | --- | % | |
| _____ | --- | --- | --- | % | |
| Total Account 232 | | | | | \$ _____ |
| ACCOUNT 234 - NOTES PAYABLE TO ASSOCIATED COMPANIES: | | | | | |
| _____ | --- | --- | --- | % | \$ |
| _____ | --- | --- | --- | % | |
| _____ | --- | --- | --- | % | |
| _____ | --- | --- | --- | % | |
| Total Account 234 | | | | | \$ _____ |

ACCOUNTS PAYABLE TO ASSOCIATED COMPANIES (ACCT. 233)

Report each account payable separately.

| DESCRIPTION (a) | TOTAL (b) |
|---------------------|--------------|
| WATER SERVICE CORP. | \$ 27,889 |
| _____ | |
| _____ | |
| _____ | |
| _____ | |
| _____ | |
| Total | \$ 27,889 |

UTILITY NAME: LAKE PLACID UTILITIES INC.

YEAR OF REPORT
DECEMBER 31, 1995

CAPITAL STOCK (ACCTS. 201 and 204)

| DESCRIPTION (a) | COMMON STOCK (b) | PREFERRED STOCK (c) |
|---|------------------------|---------------------------|
| Par or stated value per share _____ | \$ 1.00 | \$ _____ |
| Shares authorized _____ | _____ | _____ |
| Shares issued and outstanding _____ | 1,000 | _____ |
| Total par value of stock issued _____ | \$ 1,000 | \$ _____ |
| Dividends declared per share for year _____ | \$ _____ | \$ _____ |

LONG TERM DEBT (ACCT. 224)

| DESCRIPTION OF OBLIGATION (INCLUDING NOMINAL DATE OF ISSUE AND DATE OF MATURITY) (a) | INTEREST | | PRINCIPAL AMOUNT PER BALANCE SHEET (d) |
|--|-------------|--------------------------------|---|
| | RATE (b) | FREQUENCY OF PAYMENT (c) | |
| NONE | % | _____ | \$ _____ |
| _____ | % | _____ | _____ |
| _____ | % | _____ | _____ |
| _____ | % | _____ | _____ |
| _____ | % | _____ | _____ |
| _____ | % | _____ | _____ |
| _____ | % | _____ | _____ |
| _____ | % | _____ | _____ |
| _____ | % | _____ | _____ |
| _____ | % | _____ | _____ |
| _____ | % | _____ | _____ |
| _____ | % | _____ | _____ |
| _____ | % | _____ | _____ |
| _____ | % | _____ | _____ |
| _____ | % | _____ | _____ |
| _____ | % | _____ | _____ |
| _____ | % | _____ | _____ |
| _____ | % | _____ | _____ |
| _____ | % | _____ | _____ |
| _____ | % | _____ | _____ |
| Total _____ | | | \$ _____ |

UTILITY NAME: LAKE PLACID UTILITIES INC.

YEAR OF REPORT
DECEMBER 31, 1995

STATEMENT OF RETAINED EARNINGS

1. Dividends should be shown for each class and series of capital stock.
Show amounts of dividends per share.
2. Show separately the state and federal income tax effect of items shown in Account No. 439.

| ACCT. NO. (a) | DESCRIPTION (b) | AMOUNTS (c) |
|---------------------|---|----------------|
| 215 | Unappropriated Retained Earnings: | |
| | Balance beginning of year | \$ (28,712) |
| | Changes to account: | |
| 439 | Adjustments to Retained Earnings (requires Commission approval prior to use): | |
| | Credits: | \$ |
| | Total Credits | \$ |
| | Debits: | \$ |
| | Total Debits | \$ <u>0</u> |
| 435 | Balance Transferred from Income | \$ (17,311) |
| 436 | Appropriations of Retained Earnings: | \$ |
| | Total Appropriations of Retained Earnings | \$ <u>0</u> |
| | Dividends Declared: | |
| 437 | Preferred Stock Dividends Declared | \$ |
| 438 | Common Stock Dividends Declared | \$ |
| | Total Dividends Declared | \$ <u>0</u> |
| | Balance end of year | \$ (46,023) |
| 214 | Appropriated Retained Earnings (state balance and purpose of each appropriated amount at year end): | \$ |
| | Total Appropriated Retained Earnings | \$ <u>0</u> |
| | Total Retained Earnings | \$ (46,023) |

Notes to Statement of Retained Earnings:

UTILITY NAME: LAKE PLACID UTILITIES INC.

YEAR OF REPORT
DECEMBER 31, 1995

BONDS (ACCT. 221)

| DESCRIPTION OF OBLIGATION (INCLUDING NOMINAL DATE OF ISSUE AND DATE OF MATURITY) (a) | INTEREST | | PRINCIPAL AMOUNT PER BALANCE SHEET (d) |
|--|-------------|--------------------------------|---|
| | RATE (b) | FREQUENCY OF PAYMENT (c) | |
| NONE | | | \$ |
| | | | |
| | | | |
| | | | |
| | | | |
| | | | |
| | | | |
| | | | |
| | | | |
| Total | | | \$ |

ADVANCES FROM ASSOCIATED COMPANIES (ACCT. 223)

Report each advance seperately.

| DESCRIPTION (a) | TOTAL (b) |
|--------------------|--------------|
| NONE | \$ |
| | |
| | |
| | |
| | |
| | |
| | |
| | |
| Total | \$ |

UTILITY NAME: LAKE PLACID UTILITIES INC.

YEAR OF REPORT
DECEMBER 31, 1995

ACCRUED TAXES (ACCT. 236)

| ACCT. NO. (a) | DESCRIPTION (b) | WATER (c) | SEWER (d) | OTHER (e) | TOTAL (f) |
|---------------------|---|-----------------|-------------------|--------------|-------------------|
| | Balance First of Year | \$ (601) | \$ (771) | \$ | \$ (1,372) |
| 408.10 | Accruals Charged: | | | | |
| | Utility Regulatory | | | | |
| 408.11 | Assessment Fees | \$ 751 | \$ 948 | \$ | \$ 1,699 |
| 408.12 | Property Taxes | 1,628 | 2,056 | | 3,684 |
| 408.13 | Payroll Taxes | 333 | 418 | | 751 |
| 409.10 | Other Taxes & Licenses | | | | 0 |
| 409.11 | Federal Income Taxes | (4,048) | (12,960) | | (17,008) |
| 410.10 | State Income Taxes | (692) | (2,216) | | (2,908) |
| | Deferred FIT | 1,791 | 5,733 | | 7,524 |
| | Deferred SIT | 183 | 585 | | 768 |
| | ITC Restored | 0 | 0 | | 0 |
| 410.11 | Taxes Applicable To Other Income (Accts. 408.2, 409.2, 409.3, 410.2) | \$ | \$ | \$ | \$ 0 |
| | Total Taxes Accrued | \$ (54) | \$ (5,436) | \$ - | \$ (5,490) |
| | Taxes Paid During Year: | | | | |
| 408.10 | Utility Regulatory | | | | |
| | Assessment Fees | \$ 745 | \$ 954 | \$ | \$ 1,699 |
| 408.11 | Property Taxes | 1,628 | 2,056 | | 3,684 |
| 408.12 | Payroll Taxes | 333 | 418 | | 751 |
| 408.13 | Other Taxes & Licenses | 0 | 0 | | 0 |
| 409.10 | Federal Income Taxes | (4,048) | (12,960) | | (17,008) |
| 409.11 | State Income Taxes | (574) | 574 | | (0) |
| | Deferred FIT | 1,791 | 5,733 | | 7,524 |
| | Deferred SIT | 183 | 585 | | 768 |
| | ITC Restored | 0 | 0 | | 0 |
| | Taxes Applicable To Other Income (Accts. 408.2, 409.2, 409.3, 410.2) | 0 | 0 | | 0 |
| | Total Taxes Paid | \$ 58 | \$ (2,640) | \$ - | \$ (2,582) |
| | Balance End of Year | \$ (713) | \$ (3,567) | \$ 0 | \$ (4,280) |

UTILITY NAME: LAKE PLACID UTILITIES INC.

YEAR OF REPORT
DECEMBER 31, 1995

ACCRUED INTEREST (ACCT. 237)

| DESCRIPTION OF DEBT (a) | INTEREST ACCRUED DURING YEAR | | INTEREST PAID DURING YEAR (d) | BALANCE END OF YEAR (f) |
|--|----------------------------------|--------------------|----------------------------------|----------------------------|
| | BALANCE BEGINNING OF YEAR (b) | ACCT. DEBIT (c) | | |
| ACCOUNT NO. 237.1 - ACCRUED INTEREST ON LONG TERM DEBT: | \$ 0 | | \$ 0 | 0 |
| | 0 | | | 0 |
| UTILITIES, INC. | 0 | | | 0 |
| INTERCOMPANY INTEREST | 0 | | 9,666 | 0 |
| | 0 | | | 0 |
| | 0 | | | 0 |
| Total Account No. 237.1 | \$ 0 | | \$ 9,666 | 0 |
| ACCOUNT NO. 237.2 - ACCRUED INTEREST ON OTHER LIABILITIES: | \$ 0 | | \$ 0 | 0 |
| Misc Items | 12 | | 31 | 43 |
| | 0 | | | 0 |
| | 0 | | | 0 |
| | 0 | | | 0 |
| | 0 | | | 0 |
| Total Account No. 237.2 | \$ 12 | | \$ 0 | 43 |
| Total Account No. 237_ _ | \$ 12 | \$ 9,697 | \$ 9,666 | 43 |

REGULATORY COMMISSION EXPENSE - AMORTIZATION
OF RATE CASE EXPENSE (ACCTS. 666 and 766)

| DESCRIPTION OF CASE (DOCKET NO.) (a) | EXPENSE INCURRED DURING YEAR (b) | AMOUNT TRANSFERRED TO ACCT. NO. 186.1 (c) | CHARGED OFF DURING YEAR | |
|---|-------------------------------------|--|-------------------------|---------------|
| | | | ACCT. (d) | AMOUNT (e) |
| NONE | \$ | | | |
| | | | | |
| | | | | |
| | | | | |
| | | | | |
| | | | | |
| | | | | |
| | | | | |
| Total | \$ | | | - |

UTILITY NAME: LAKE PLACID UTILITIES INC.

| |
|---|
| <p>YEAR OF REPORT DECEMBER 31, 1995</p> |
|---|

MISCELLANEOUS CURRENT AND ACCRUED LIABILITIES (ACCT. 241)

| DESCRIPTION (a) | BALANCE END OF YEAR (b) |
|---|-------------------------------|
| NONE | \$ |
| | |
| | |
| | |
| | |
| | |
| | |
| | |
| | |
| | |
| | |
| | |
| | |
| | |
| | |
| | |
| | |
| | |
| Total Miscellaneous Current And Accrued Liabilities | \$ |

ADVANCES FOR CONSTRUCTION (ACCT. 252)

| NAME OF PAYOR (a) | BALANCE BEGINNING OF YEAR (b) | DEBITS | | CREDITS (e) | BALANCE END OF YEAR (f) |
|----------------------|--|-----------------------|---------------|----------------|----------------------------------|
| | | ACCT. DEBIT (c) | AMOUNT (d) | | |
| NONE | \$ | | \$ | \$ | \$ |
| | | | | | |
| | | | | | |
| | | | | | |
| | | | | | |
| | | | | | |
| | | | | | |
| | | | | | |
| | | | | | |
| | | | | | |
| | | | | | |
| | | | | | |
| | | | | | |
| | | | | | |
| | | | | | |
| | | | | | |
| | | | | | |
| | | | | | |
| | | | | | |
| | | | | | |
| Total | \$ | | \$ | \$ | \$ |

UTILITY NAME: LAKE PLACID UTILITIES INC.

| |
|-------------------------------------|
| YEAR OF REPORT DECEMBER 31, 1995 |
|-------------------------------------|

CONTRIBUTIONS IN AID OF CONSTRUCTION (ACCT. 271)

| DESCRIPTION (a) | WATER (b) | SEWER (c) | W & S OTHER THAN SYSTEM REPORTING (d) | TOTAL (e) |
|---|--------------|--------------|--|--------------|
| Balance first of year_ _ _ _ | \$ 63,517 | 115,150 | - | 178,667 |
| Add credits during year: | | | | |
| Contributions received from Capacity, Main Extension and Customer Connection Charges (Schedule "A")_ _ _ | \$ 1,168 | 5,368 | - | 6,536 |
| Contributions received from Developer or Contractor Agreements in cash or property (Schedule "B")_ _ | - | - | - | - |
| Acquisition of Utility | - | - | - | - |
| Total Credits_ _ _ _ _ | \$ 1,168 | 5,368 | - | 6,536 |
| Less debits charged during the year (All debits charged during the year must be explained below) | \$ - | - | - | - |
| Total Contributions In Aid of Construction_ _ _ _ _ | \$ 64,685 | 120,518 | - | 185,203 |

Explain all debits charged to Account 271 below:

UTILITY NAME: LAKE PLACID UTILITIES INC.

| |
|---|
| <p>YEAR OF REPORT DECEMBER 31, 1995</p> |
|---|

SCHEDULE "A"
 ADDITIONS TO CONTRIBUTIONS IN AID OF CONSTRUCTION RECEIVED
 EXTENSION AND CUSTOMER CONNECTION CHARGES RECEIVED

| DESCRIPTION OF CHARGES (a) | NUMBER OF CONNECTIONS (b) | CHARGE PER CONNECTION (c) | WATER (d) | SEWER (e) |
|-------------------------------|---------------------------------|---------------------------------|--------------|--------------|
| Sewer Connection Fees | 4 | \$ 817 | \$ | \$ 3,268 |
| | 4 | 525 | | 2,100 |
| Water Connection Fees | 4 | 292 | 1,168 | - |
| | | | | - |
| | | | | - |
| | | | | - |
| | | | | - |
| | | | | - |
| | | | | - |
| | | | | - |
| | | | | - |
| Total Credits | | \$ | 1,168 | \$ 5,368 |

ACCUMULATED AMORTIZATION OF CONTRIBUTIONS IN AID OF CONSTRUCTION (ACCT. 272)

| DESCRIPTION (a) | WATER (b) | SEWER (c) | W & S OTHER THAN SYSTEM REPORTING (d) | TOTAL (e) |
|-------------------------------|--------------|--------------|--|--------------|
| Balance first of year | \$ 10,901 | 54,044 | 0 | 64,945 |
| Dedits during year: | | | | |
| Accruals charged to Account | \$ 2,063 | 3,842 | 0 | 5,905 |
| Other debits (specify): | 0 | 0 | 0 | 0 |
| Total debits | \$ 2,063 | 3,842 | 0 | 5,905 |
| Credits during year (specify) | \$ | | | |
| Total Credits | \$ 0 | 0 | 0 | 0 |
| Balance end of year | \$ 12,964 | 57,886 | 0 | 70,850 |

UTILITY NAME: LAKE PLACID UTILITIES INC.

YEAR OF REPORT
DECEMBER 31, 1995

RECONCILIATION OF REPORTED NET INCOME WITH TAXABLE INCOME FOR FEDERAL INCOME TAXES
(UTILITY OPERATIONS)

1. The reconciliation should include the same detail as furnished on Schedule M-1 of the federal tax return for the year. The reconciliation shall be submitted even though there is no taxable income for the year. Descriptions should clearly indicate the nature of each reconciling amount and show the computation of all tax accruals.

2. If the utility is a member of a group which files a consolidated federal tax return, reconcile reported net income with taxable net income as if a separate return were to be filed, indicating intercompany amounts to be eliminated in such consolidated return. State names of group members, tax assigned to each group member, and basis of allocation, assignment, or sharing of the consolidated tax among the group members.

| DESCRIPTION (a) | REF (b) | AMOUNT (c) |
|---|------------|---------------|
| Net income for the year | | \$ (17,311) |
| Reconciling items for the year: | | |
| Taxable income not reported on books: | | |
| TAP FEES | | 6,536 |
| | | |
| | | |
| | | |
| Deductions recorded on books not deducted for return: | | |
| Net Change - Deferred Maintenance | | 105 |
| Net Change - Rate Case | | (19,079) |
| Excess Tax Depreciation over Book Depreciation | | (785) |
| Current FIT | | (17,008) |
| Deferred FIT | | 7,524 |
| Deferred SIT | | 768 |
| Income recorded on books not included in return: | | |
| Turnaround of Prior Year's - Deferred Maintenance | | 0 |
| Interest During Construction | | (1,147) |
| Turnaround of Prior Year's - Rate Case | | |
| | | |
| Deduction on return not charged against book income: | | |
| Organization Exp | | (9,567) |
| | | |
| | | |
| Federal tax net income | | \$ (49,964) |
| Computation of tax: | | |
| (49,964) | | |
| <u>34</u> | | |
| (16,988) | | |

** COMPLETION OF SCHEDULE ONLY REQUIRED IF AFUDC WAS CHARGED DURING YEAR **

UTILITY NAME: LAKE PLACID UTILITIES INC.

YEAR OF REPORT
DECEMBER 31, 1995

SCHEDULE "A"

SCHEDULE OF COST OF CAPITAL USED FOR AFUDC CALCULATION (2)

| CLASS OF CAPITAL (a) | DOLLAR AMOUNT (1) (b) | PERCENTAGE OF CAPITAL (c) | ACTUAL COST RATES (d) | WEIGHTED COST (c x d) (e) |
|---------------------------|-----------------------------|------------------------------------|--------------------------------|------------------------------------|
| Common Equity | \$ 34,311 | 49.67 % | 11.29 % | 5.61 % |
| Preferred Stock | 0 | 0.00 % | 0.00 % | 0.00 % |
| Long Term Debt | 33,557 | 48.58 % | 9.52 % | 4.62 % |
| Customer Deposits | 192 | 0.28 % | 6.50 % | 0.02 % |
| Tax Credits - Zero Cost | 0 | 0.00 % | 0.00 % | 0.00 % |
| Tax Credits - Weighted Co | 0 | 0.00 % | 0.00 % | 0.00 % |
| Deferred Income Taxes | 1,022 | 1.48 % | 0.00 % | 0.00 % |
| Other (Explain) | 0 | 0.00 % | 0.00 % | 0.00 % |
| Total | \$ 69,082 | 100.00 % | | 10.25 % |

(1) Should equal amounts on Schedule B, Column (f), Page F-25.

(2) Must be calculated using the same methodology used to calculate AFUDC rate approved by the Commission.

APPROVED AFUDC RATE

Current Commission approved AFUDC rate: 10.25 %

Commission order approving AFUDC rate: PSC-95-1490-FOF-WS

** COMPLETION OF SCHEDULE ONLY REQUIRED IF AFUDC WAS CHARGED DURING YEAR **

UTILITY NAME: LAKE PLACID UTILITIES INC.

| |
|-------------------------------------|
| YEAR OF REPORT DECEMBER 31, 1995 |
|-------------------------------------|

SCHEDULE "B"

SCHEDULE OF CAPITAL STRUCTURE ADJUSTMENTS

| CLASS OF CAPITAL (a) | PER BOOK BALANCE (b) | NON-UTILITY ADJUSTMENTS (c) | NON-JURIS. ADJUSTMENTS (d) | OTHER (1) ADJUSTMENTS (e) | CAPITAL STRUCTURE USED FOR AFUDC CALCULATION (f) |
|---|-------------------------------|-----------------------------------|----------------------------------|---------------------------------|---|
| Common Equity | \$ 34,311 | \$ 0 | \$ 0 | \$ 0 | \$ 34,311 |
| Preferred Stock | 0 | 0 | 0 | 0 | 0 |
| Long Term Debt | 33,557 | 0 | 0 | 0 | 33,557 |
| Customer Deposits | 192 | 0 | 0 | 0 | 192 |
| Tax Credits - Zero Cost | 0 | 0 | 0 | 0 | 0 |
| Tax Credits - Weighted Cost of Capital | 0 | 0 | 0 | 0 | 0 |
| Deferred Income Taxes | 1,022 | 0 | 0 | 0 | 1,022 |
| Other (Explain) | 0 | 0 | 0 | 0 | 0 |
| Total | \$ 69,082 | \$ 0 | \$ 0 | \$ 0 | \$ 69,082 |

(1) Explain below all adjustments made in Column (e):

NOT APPLICABLE

**WATER
OPERATION
SECTION**

UTILITY NAME: LAKE PLACID UTILITIES INC.

YEAR OF REPORT
DECEMBER 31, 1995

WATER UTILITY PLANT ACCOUNTS

| ACCT. NO. (a) | ACCOUNT NAME (b) | PREVIOUS YEAR (c) | ADDITIONS (d) | RETIREMENTS (e) |
|---------------------|--|-------------------------|------------------|--------------------|
| 301 | Organization | \$ 20,881 | \$ 0 | \$ |
| 302 | Franchises | 0 | 0 | |
| 303 | Land and Land Rights | 1,250 | 0 | |
| 304 | Structures and Improvements | 13,687 | 13,603 | 532 |
| 305 | Collecting and Impounding Reservoirs | 0 | 0 | |
| 306 | Lake, River and Other Intakes | 0 | 0 | |
| 307 | Wells and Springs | 19,279 | 417 | |
| 308 | Infiltration Galleries and Tunnels | 0 | 0 | |
| 309 | Supply Mains | 0 | 0 | |
| 310 | Power Generation Equipment | 0 | 0 | |
| 311 | Pumping Equipment | 15,315 | 1,015 | |
| 320 | Water Treatment Equipment | 7,525 | 817 | |
| 330 | Distribution Reservoirs and Standpipes | 0 | 0 | |
| 331 | Transmission and Distribution Mains | 10,750 | 15,834 | |
| 333 | Services | 34,105 | 3,182 | |
| 334 | Meters and Meter Installations | 19,195 | 931 | |
| 335 | Hydrants | 10,562 | 299 | |
| 339 | Hydrants | 1,200 | 0 | |
| 339 | Other Plant and Miscellaneous Equipment | 0 | 0 | |
| 340 | Office Furniture and Equip. | 0 | 0 | |
| 341 | Transportation Equipment | 0 | 0 | |
| 342 | Stores Equipment | 0 | 0 | |
| 343 | Tools, Shop and Garage Equip. | 1,270 | 0 | |
| 344 | Laboratory Equipment | 0 | 361 | |
| 345 | Power Operated Equipment | 0 | 0 | |
| 346 | Communication Equipment | 0 | 0 | |
| 347 | Miscellaneous Equipment | 0 | 0 | |
| 348 | Other Tangible Plant (from UIF) | 0 | 5,122 | |
| | Total Water Plant | \$ 155,019 | \$ 41,581 | \$ 532 |

NOTE: Any adjustments made to reclassify property from one account to another must be footnoted.

WATER UTILITY PLANT MATRIX

| CURRENT YEAR (f) | .1 INTANGIBLE PLANT (g) | .2 SOURCE OF SUPPLY AND PUMPING PLANT (h) | .3 WATER TREATMENT PLANT (i) | .4 TRANSMISSION AND DISTRIBUTION PLANT (j) | .5 GENERAL PLANT (k) |
|------------------------|----------------------------------|--|--|---|-------------------------------|
| \$ 20,881 | \$ 20,881 | XXXXXXXXXXXXXX | XXXXXXXXXXXXXX | XXXXXXXXXXXXXX | \$ XXXXXXXXXXXXXX |
| 0 | 0 | XXXXXXXXXXXXXX | XXXXXXXXXXXXXX | XXXXXXXXXXXXXX | XXXXXXXXXXXXXX |
| 1,250 | XXXXXXXXXXXXXX | 1,250 | 0 | 0 | 0 |
| 26,758 | XXXXXXXXXXXXXX | 26,758 | 0 | 0 | 0 |
| 0 | XXXXXXXXXXXXXX | 0 | XXXXXXXXXXXXXX | XXXXXXXXXXXXXX | XXXXXXXXXXXXXX |
| 0 | XXXXXXXXXXXXXX | 0 | XXXXXXXXXXXXXX | XXXXXXXXXXXXXX | XXXXXXXXXXXXXX |
| 0 | XXXXXXXXXXXXXX | 0 | XXXXXXXXXXXXXX | XXXXXXXXXXXXXX | XXXXXXXXXXXXXX |
| 19,696 | XXXXXXXXXXXXXX | 19,696 | XXXXXXXXXXXXXX | XXXXXXXXXXXXXX | XXXXXXXXXXXXXX |
| 0 | XXXXXXXXXXXXXX | 0 | XXXXXXXXXXXXXX | XXXXXXXXXXXXXX | XXXXXXXXXXXXXX |
| 0 | XXXXXXXXXXXXXX | 0 | XXXXXXXXXXXXXX | XXXXXXXXXXXXXX | XXXXXXXXXXXXXX |
| 0 | XXXXXXXXXXXXXX | 0 | XXXXXXXXXXXXXX | XXXXXXXXXXXXXX | XXXXXXXXXXXXXX |
| 0 | XXXXXXXXXXXXXX | 0 | XXXXXXXXXXXXXX | XXXXXXXXXXXXXX | XXXXXXXXXXXXXX |
| 16,330 | XXXXXXXXXXXXXX | 16,330 | XXXXXXXXXXXXXX | XXXXXXXXXXXXXX | XXXXXXXXXXXXXX |
| 8,342 | XXXXXXXXXXXXXX | XXXXXXXXXXXXXX | 8,342 | XXXXXXXXXXXXXX | XXXXXXXXXXXXXX |
| 0 | XXXXXXXXXXXXXX | XXXXXXXXXXXXXX | XXXXXXXXXXXXXX | 0 | XXXXXXXXXXXXXX |
| 26,584 | XXXXXXXXXXXXXX | XXXXXXXXXXXXXX | XXXXXXXXXXXXXX | 26,584 | XXXXXXXXXXXXXX |
| 0 | XXXXXXXXXXXXXX | XXXXXXXXXXXXXX | XXXXXXXXXXXXXX | 0 | XXXXXXXXXXXXXX |
| 37,287 | XXXXXXXXXXXXXX | XXXXXXXXXXXXXX | XXXXXXXXXXXXXX | 37,287 | XXXXXXXXXXXXXX |
| 20,126 | XXXXXXXXXXXXXX | XXXXXXXXXXXXXX | XXXXXXXXXXXXXX | 20,126 | XXXXXXXXXXXXXX |
| 10,861 | XXXXXXXXXXXXXX | XXXXXXXXXXXXXX | XXXXXXXXXXXXXX | 10,861 | XXXXXXXXXXXXXX |
| 1,200 | XXXXXXXXXXXXXX | XXXXXXXXXXXXXX | XXXXXXXXXXXXXX | 1,200 | XXXXXXXXXXXXXX |
| 0 | 0 | 0 | 0 | 0 | XXXXXXXXXXXXXX |
| 0 | 0 | 0 | 0 | 0 | XXXXXXXXXXXXXX |
| 0 | XXXXXXXXXXXXXX | XXXXXXXXXXXXXX | XXXXXXXXXXXXXX | XXXXXXXXXXXXXX | 0 |
| 0 | XXXXXXXXXXXXXX | XXXXXXXXXXXXXX | XXXXXXXXXXXXXX | XXXXXXXXXXXXXX | 0 |
| 0 | XXXXXXXXXXXXXX | XXXXXXXXXXXXXX | XXXXXXXXXXXXXX | XXXXXXXXXXXXXX | 0 |
| 1,270 | XXXXXXXXXXXXXX | XXXXXXXXXXXXXX | XXXXXXXXXXXXXX | XXXXXXXXXXXXXX | 1,270 |
| 361 | XXXXXXXXXXXXXX | XXXXXXXXXXXXXX | XXXXXXXXXXXXXX | XXXXXXXXXXXXXX | 361 |
| 0 | XXXXXXXXXXXXXX | XXXXXXXXXXXXXX | XXXXXXXXXXXXXX | XXXXXXXXXXXXXX | 0 |
| 0 | XXXXXXXXXXXXXX | XXXXXXXXXXXXXX | XXXXXXXXXXXXXX | XXXXXXXXXXXXXX | 0 |
| 0 | XXXXXXXXXXXXXX | XXXXXXXXXXXXXX | XXXXXXXXXXXXXX | XXXXXXXXXXXXXX | 0 |
| 5,122 | XXXXXXXXXXXXXX | XXXXXXXXXXXXXX | XXXXXXXXXXXXXX | XXXXXXXXXXXXXX | 5,122 |
| <hr/> | <hr/> | <hr/> | <hr/> | <hr/> | <hr/> |
| \$ 196,068 | \$ 20,881 | 64,034 | 8,342 | 96,058 | 6,753 |
| ----- | ----- | ----- | ----- | ----- | ----- |

UTILITY NAME: LAKE PLACID UTILITIES INC.

YEAR OF REPORT
DECEMBER 31, 1995

WATER UTILITY EXPENSE ACCOUNTS

| ACCT. NO. (a) | ACCOUNT NAME (b) | CURRENT YEAR (c) | .1 SOURCE OF SUPPLY AND EXPENSES - OPERATIONS (d) | .2 SOURCE OF SUPPLY AND EXPENSES - MAINTENANCE (e) |
|------------------|--|---------------------|---|--|
| 601 | Salaries and Wages - Employees | \$ 1,545 | 340 | 93 |
| 603 | Salaries and Wages - Officers, Directors and Majority Stockholders | | | |
| 604 | Employee Pensions and Benefits | 706 | 155 | 42 |
| 610 | Purchased Water | | | XXXXXXXXXXXX |
| 615 | Purchased Power | 1,972 | 1,972 | XXXXXXXXXXXX |
| 616 | Fuel for Power Purchased | | | XXXXXXXXXXXX |
| 618 | Chemicals | 1,484 | | |
| 620 | Materials and Supplies | 6,979 | 2,792 | 698 |
| 631 | Contractual Services - Eng. | 3 | | |
| 632 | Contractual Services - Acct. | 129 | | |
| 633 | Contractual Services - Legal | 35 | | |
| 634 | Contractual Services - Management Fees | 286 | | |
| 635 | Contractual Services - Other | 571 | | |
| 641 | Rental of Building/Real Property | | | |
| 642 | Rental of Equipment | | | |
| 650 | Transportation Expenses | 1,021 | 225 | 61 |
| 656 | Insurance - Vehicle | | | |
| 657 | Insurance - General Liability | | | |
| 658 | Insurance - Workman's Compensation | | | |
| 659 | Insurance - Other | 389 | 86 | 23 |
| 660 | Advertising Expense | | XXXXXXXXXXXX | XXXXXXXXXXXX |
| 666 | Regulatory Commission Expenses - Amortization of Rate Case Expense | - | XXXXXXXXXXXX | XXXXXXXXXXXX |
| 667 | Regulatory Commission Expenses - Other | - | XXXXXXXXXXXX | XXXXXXXXXXXX |
| 670 | Bad Debt Expense | 5 | XXXXXXXXXXXX | XXXXXXXXXXXX |
| 675 | Miscellaneous Expenses | 1,991 | | |
| | Total Water Utility Expenses | \$ 17,116 | \$ 5,570 | \$ 917 |

WATER EXPENSE ACCOUNT MATRIX

| | .3 WATER TREATMENT EXPENSES - OPERATIONS (f) | .4 WATER TREATMENT EXPENSES - MAINTENANCE (g) | .5 TRANSMISSION & DISTRIBUTION EXPENSES - OPERATIONS (h) | .6 TRANSMISSION & DISTRIBUTION EXPENSES - MAINTENANCE (i) | .7 CUSTOMER ACCOUNTS EXPENSE (j) | .8 ADMINISTRATIVE & GENERAL EXPENSES (k) |
|-----|---|--|---|--|--|--|
| 601 | \$ 340 | 93 | 541 | 138 | | |
| 603 | | | | | | |
| 604 | 155 | 42 | 247 | 65 | | |
| 610 | XXXXXXXXXXXX | XXXXXXXXXXXX | XXXXXXXXXXXX | XXXXXXXXXXXX | XXXXXXXXXXXX | XXXXXXXXXXXX |
| 615 | | XXXXXXXXXXXX | | XXXXXXXXXXXX | | |
| 616 | | XXXXXXXXXXXX | | XXXXXXXXXXXX | | |
| 618 | 1,484 | | | | XXXXXXXXXXXX | XXXXXXXXXXXX |
| 620 | | | 2,931 | 558 | | |
| 631 | | | 3 | | | |
| 632 | | | | | | 129 |
| 633 | | | | | | 35 |
| 634 | | | | | | |
| 635 | | | | | 286 | |
| 641 | | | | | 286 | 285 |
| 642 | | | | | | |
| 650 | 225 | 61 | 357 | 92 | | |
| 656 | | | | | | |
| 657 | | | | | | |
| 658 | | | | | | |
| 659 | 86 | 23 | 136 | 35 | | |
| 660 | XXXXXXXXXXXX | XXXXXXXXXXXX | XXXXXXXXXXXX | XXXXXXXXXXXX | XXXXXXXXXXXX | |
| 666 | XXXXXXXXXXXX | XXXXXXXXXXXX | XXXXXXXXXXXX | XXXXXXXXXXXX | XXXXXXXXXXXX | |
| | XXXXXXXXXXXX | XXXXXXXXXXXX | XXXXXXXXXXXX | XXXXXXXXXXXX | XXXXXXXXXXXX | |
| | XXXXXXXXXXXX | XXXXXXXXXXXX | XXXXXXXXXXXX | XXXXXXXXXXXX | XXXXXXXXXXXX | 0 |
| 667 | | | | | | 0 |
| 670 | XXXXXXXXXXXX | XXXXXXXXXXXX | XXXXXXXXXXXX | XXXXXXXXXXXX | 5 | XXXXXXXXXXXX |
| 675 | | | | | 995 | 996 |
| | \$ 2,290 | \$ 219 | \$ 4,215 | \$ 888 | \$ 1,572 | \$ 1,445 |

UTILITY NAME: LAKE PLACID UTILITIES INC.

YEAR OF REPORT
DECEMBER 31, 1995

WATER OPERATING REVENUE

| ACCT. NO. (a) | DESCRIPTION (b) | BEGINNING YEAR NO. CUSTOMERS (c) | YEAR END NUMBER CUSTOMERS (d) | AMOUNTS (e) |
|---------------|--|----------------------------------|-------------------------------|-------------|
| | Operating Revenues: | | | |
| 460 | Unmetered Water Revenue | | | \$ |
| | Metered Water Revenue: | | | |
| 461.1 | Metered Sales to Residential Customers | 150 | 169 | \$ 17,967 |
| 461.2 | Metered Sales to Commercial Customers | | | |
| 461.3 | Metered Sales to Industrial Customers | | | |
| 461.4 | Metered Sales to Public Authorities | | | |
| 461.5 | Metered Sales to Multiple Family Dwellings | | | |
| | Total Metered Sales | 150 | 169 | \$ 17,967 |
| | Fire Protection Revenue: | | | |
| 462.1 | Public Fire Protection | | | \$ |
| 462.2 | Private Fire Protection | | | |
| | Total Fire Protection Revenue | | | \$ |
| 464 | Other Sales To Public Authorities | | | \$ |
| 465 | Sales To Irrigation Customers | | | |
| 466 | Sales For Resale | | | |
| 467 | Interdepartmental Sales | | | |
| | Totals | 150 | 169 | \$ 17,967 |
| | Other Water Revenues: | | | |
| 469 | Guaranteed Revenues | | | \$ |
| 470 | Forfeited Discounts | | | 0 |
| 471 | Miscellaneous Service Revenues | | | 188 |
| 472 | Rents From Water Property | | | |
| 473 | Interdepartmental Rents | | | |
| 474 | Other Water Revenues | | | |
| | Total Other Water Revenues | | | \$ 188 |
| | Total Water Operating Revenues | | | \$ 18,155 |

UTILITY NAME: LAKE PLACID UTILITIES INC.

YEAR OF REPORT
DECEMBER 31, 1995

BASIS FOR WATER DEPRECIATION CHARGES

| ACCT. NO. (a) | ACCOUNT NAME (b) | AVERAGE SERVICE LIFE IN YEARS (c) | AVERAGE NET SALVAGE IN PERCENT (d) | DEPRECIATION RATE APPLIED IN PERCENT (100% - d) / c (e) |
|---------------|---|-----------------------------------|------------------------------------|---|
| 304 | Structures and Improvements | | | 3.03% |
| 305 | Collecting and Impounding Reservoirs | | | |
| 306 | Lake, River and Other Intakes | | | |
| 307 | Wells and Springs | | | 3.33% |
| 308 | Infiltration Galleries and Tunnels | | | |
| 309 | Supply Mains | | | |
| 310 | Power Generation Equipment | | | |
| 311 | Pumping Equipment | | | 5.00% |
| 320 | Water Treatment Equipment | | | 4.55% |
| 330 | Distribution Reservoirs and Standpipes | | | 2.70% |
| 331 | Transmission and Distribution Mains | | | 2.33% |
| 333 | Services | | | 2.50% |
| 334 | Meters and Meter Installations | | | 5.00% |
| 335 | Hydrants | | | 2.22% |
| 339 | Other Plant and Miscellaneous Equipment | | | |
| 340 | Office Furniture and Equip. | | | |
| 341 | Transportation Equipment | | | |
| 342 | Stores Equipment | | | |
| 343 | Tools, Shop and Garage Equip. | | | 6.25% |
| 344 | Laboratory Equipment | | | 6.67% |
| 345 | Power Operated Equipment | | | |
| 346 | Communication Equipment | | | |
| 347 | Miscellaneous Equipment | | | |
| 348 | Other Tangible Plant | | | |
| | Water Plant Composite Depreciation Rate * | | | |

* If depreciation rates prescribed by this Commission are on a total composite basis, entries should be made on this line only.

UTILITY NAME: LAKE PLACID UTILITIES INC.

YEAR OF REPORT
DECEMBER 31, 1995

ANALYSIS OF ENTRIES IN WATER ACCUMULATED DEPRECIATION

| ACCT. NO. (a) | ACCOUNT NAME (b) | BALANCE AT BEGINNING OF YEAR (c) | ACCRUALS (d) | OTHER CREDITS * (e) | TOTAL CREDITS (d+e) (f) |
|------------------|---|-------------------------------------|-----------------|------------------------|----------------------------|
| 304 | Structures and Improvements | \$ 2,381 | \$ 398 | \$ (541) | \$ (143) |
| 305 | Collecting and Impounding Reservoirs | 0 | 0 | 0 | 0 |
| 306 | Lake, River and Other Intakes | 0 | 0 | 0 | 0 |
| 307 | Wells and Springs | 3,549 | 642 | (959) | (317) |
| 308 | Infiltration Galleries and Tunnels | 0 | 0 | 0 | 0 |
| 309 | Supply Mains | 0 | 0 | 0 | 0 |
| 310 | Power Generation Equipment | 0 | 0 | 0 | 0 |
| 311 | Pumping Equipment | 3,106 | 766 | (912) | (146) |
| 320 | Water Treatment Equipment | 1,441 | 369 | (351) | 18 |
| 330 | Distribution Reservoirs and Standpipes | 768 | 290 | 676 | 966 |
| 331 | Transmission and Distribution Mains | 4,435 | 797 | 161 | 958 |
| 333 | Services | 2,174 | 480 | 405 | 885 |
| 334 | Meters and Meter Installations | 2,548 | 543 | (1,089) | (546) |
| 335 | Hydrants | 156 | 27 | 5 | 32 |
| 339 | Other Plant and Miscellaneous Equipment | 0 | 0 | 0 | 0 |
| 340 | Office Furniture and Equip. | 0 | 9 | (9) | 0 |
| 341 | Transportation Equipment | 0 | 0 | 0 | 0 |
| 342 | Stores Equipment | 0 | 0 | 0 | 0 |
| 343 | Tools, Shop and Garage Equip. | 419 | 215 | (384) | (169) |
| 344 | Laboratory Equipment | 0 | 26 | 46 | 72 |
| 345 | Power Operated Equipment | 0 | 0 | 0 | 0 |
| 346 | Communication Equipment | 0 | 42 | (42) | 0 |
| 347 | Miscellaneous Equipment | 0 | 0 | 0 | 0 |
| 348 | Other Tangible Plant | 0 | 0 | 3,473 | 3,473 |
| | Adj per commission PSC-95-0574-POF-WS (offset Accum/amort of CIA) | 0 | | | |
| | Total Depreciable Water Plant In Service | \$ 20,977 | \$ 4,604 | \$ 479 | \$ 5,083 |

* Specify nature of transaction.
Use () to denote reversal entries.

The "Other Credits (e)" in 1995 are the result of a change in the policy of recording depreciation expense by specific asset account per Docket # 940917-WS. The balance in "Other Credits (e)" is offset by the change in Accumulated Amortization on Pg F-6.

ANALYSIS OF ENTRIES IN WATER ACCUMULATED DEPRECIATION (Cont'd)

| PLANT RETIRED (g) | ASSOCIATED SALVAGE AND INSURANCE (h) | ASSOCIATED COST OF REMOVAL (i) | OTHER CHARGES (j) | TOTAL CHARGES (g-h+i+j) (k) | BALANCE AT END OF YEAR (c+f-k) (l) |
|-------------------------|--|--|-------------------------|--------------------------------------|--|
| \$ 532 | \$ | \$ | \$ | \$ 532 | \$ 1,706 |
| 0 | | | | 0 | 0 |
| 0 | | | | 0 | 0 |
| 0 | | | | 0 | 0 |
| 0 | | | | 0 | 3,232 |
| 0 | | | | 0 | 0 |
| 0 | | | | 0 | 0 |
| 0 | | | | 0 | 0 |
| 0 | | | | 0 | 0 |
| 0 | | | | 0 | 2,960 |
| 0 | | | | 0 | 1,459 |
| 0 | | | | 0 | 0 |
| 0 | | | | 0 | 1,734 |
| 0 | | | | 0 | 0 |
| 0 | | | | 0 | 5,393 |
| 0 | | | | 0 | 3,059 |
| 0 | | | | 0 | 2,002 |
| 0 | | | | 0 | 188 |
| 0 | | | | 0 | 0 |
| 0 | | | | 0 | 0 |
| 0 | | | | 0 | 0 |
| 0 | | | | 0 | 0 |
| 0 | | | | 0 | 0 |
| 0 | | | | 0 | 0 |
| 0 | | | | 0 | 250 |
| 0 | | | | 0 | 72 |
| 0 | | | | 0 | 0 |
| 0 | | | | 0 | 0 |
| 0 | | | | 0 | 0 |
| 0 | | | | 0 | 3,473 |
| 0 | | | | 0 | 0 |
| <u>\$ 532</u> | <u>\$ 0</u> | <u>\$ 0</u> | <u>\$ 0</u> | <u>\$ 532</u> | <u>\$ 25,528</u> |

UTILITY NAME: LAKE PLACID UTILITIES, INC.

YEAR OF REPORT
DECEMBER 31, 1995

SYSTEM NAME:

PUMPING AND PURCHASED WATER STATISTICS

| MONTH (a) | WATER PURCHASED FOR RESALE (Omit 000's) (b) | FINISHED WATER PUMPED FROM WELLS (Omit 000's) (c) | WATER USED FOR LINE FLUSHING, FIGHTING FIRES, ETC. (d) | TOTAL WATER PUMPED AND PURCHASED (Omit 000's) (b)+(c)-(d) (e) | WATER SOLD TO CUSTOMERS (Omit 000's) (f) |
|--------------|---|---|---|--|--|
| January | | 1.348 | | | |
| February | | 1.482 | | | |
| March | | 1.547 | | | |
| April | | 1.342 | | | |
| May | | 1.164 | | | |
| June | | 1.037 | | | |
| July | | 1.119 | | | |
| August | | 1.06 | | | |
| September | | 0.847 | | | |
| October | | 1.049 | | | |
| November | | 1.276 | | | |
| December | | 1.361 | | | |
| Total for | | 14.632 | | 14.632 | 0 |

If water is purchased for resale, indicate the following:

Vendor None

Point of delivery _____

If water is sold to other water utilities for redistribution, list names of such utilities below:

N/A

UTILITY NAME: LAKE PLACID UTILITIES, INC.

YEAR OF REPORT
DECEMBER 31, 1995

SYSTEM NAME: _____

WATER TREATMENT PLANT INFORMATION

Type of treatment (reverse osmosis, etc.): _____
 Methods used (sedimentation, chemical, aerated, etc.): _____

LIME TREATMENT

Unit rating (GPM): _____ Manufacturer: _____

FILTRATION

Type and area: Pressure ---> Square Feet: _____
 Gravity ---> GPM/Square Feet: _____

MAINS

| TYPE OF PIPE (Galvanized, Cast Iron, PVC, Etc.) | DIAMETER OF PIPE (in inches) | MAINS BEGINNING OF YEAR (in feet) | ADDITIONS | RETIREMENTS | MAINS END OF YEAR (in feet) |
|---|---------------------------------------|--|-----------|-------------|-----------------------------------|
| PVC | 4" | 2250 | --- | --- | 2250 |
| PVC | 6" | 3090 | --- | --- | 3090 |
| - | - | - | --- | --- | --- |
| --- | --- | --- | --- | --- | --- |
| --- | --- | --- | --- | --- | --- |
| --- | --- | --- | --- | --- | --- |
| --- | --- | --- | --- | --- | --- |
| Total feet of mains | ----- | ----- | ----- | ----- | ----- |

SERVICES AND METERS

| METERS IN SERVICE | METERS BEGINNING OF YEAR | ADDITIONS | RETIREMENTS | METERS END OF YEAR |
|---------------------------|--------------------------------|-----------|-------------|-----------------------|
| 5/8" - 3/4" | --- | --- | --- | --- |
| 1" | --- | --- | --- | --- |
| 2" | --- | --- | --- | --- |
| 3" | --- | --- | --- | --- |
| 4" | --- | --- | --- | --- |
| 6" | --- | --- | --- | --- |
| 8" | --- | --- | --- | --- |
| Other (Specify): _____ | --- | --- | --- | --- |
| Total meters in service | ----- | ----- | ----- | ----- |
| Total meters in stock | ----- | ----- | ----- | ----- |
| Number of services in use | ----- | ----- | ----- | ----- |

UTILITY NAME: LAKE PLACID UTILITIES, INC.

SYSTEM NAME: _____

YEAR OF REPORT
DECEMBER 31, 1995

WELLS AND WELL PUMPS

| (a) | (b) | (c) | (d) | (e) |
|---|------------------|------------------|-----|-----|
| Year Constructed _____ | 1969 | 1969 | | |
| Types of Well Construction and Casing _____ | GALVANIZED STEEL | GALVANIZED STEEL | | |
| Depth of Wells _____ | 423 | 1255 | | |
| Diameters of Wells _____ | 6" | 6' 4 5" | | |
| Pump - GPM _____ | 200 GPM | 200 GPM | | |
| Motor - HP _____ | | | | |
| Yields of Wells in GPD _____ | 576,000 | | | |
| Auxiliary Power _____ | | | | |

RESERVOIRS

| (a) | (b) | (c) | (d) | (e) |
|--|--------|-----|-----|-----|
| Description (steel, concrete or pneumatic) _____ | STEEL | | | |
| Capacity of Tank _____ | 5000 | | | |
| Ground or Elevated _____ | GROUND | | | |

HIGH SERVICE PUMPING

| MOTORS (a) | (b) | (c) | (d) | (e) |
|--|-----|-----|-----|-----|
| Manufacturer _____ | N/A | | | |
| Type _____ | | | | |
| Rated Horsepower _____ | | | | |
| PUMPS | | | | |
| Manufacturer _____ | | | | |
| Type _____ | | | | |
| Capacity in GPM _____ | | | | |
| Average Number Of Hours Operated Per Day _____ | | | | |
| Auxiliary Power _____ | | | | |

UTILITY NAME: LAKE PLACID UTILITIES, INC.

YEAR REPORT
DECEMBER 31, 1995

SYSTEM NAME: _____

SOURCE OF SUPPLY

| | | | | | |
|---------------------------------|---------|-------|-------|-------|-------|
| List for each source of supply: | | | | | |
| Gals. per day of source | 576,000 | ----- | ----- | ----- | ----- |
| Type of source | 2 WELLS | ----- | ----- | ----- | ----- |

WATER TREATMENT FACILITIES

| | | | | | |
|---|------------|-------|-------|-------|-------|
| List for each water treatment facility: | | | | | |
| Type | HLORINATIO | ----- | ----- | ----- | ----- |
| Make | | ----- | ----- | ----- | ----- |
| Gals. per day capacity | 576,000 | ----- | ----- | ----- | ----- |
| Method of measurement | FLOW METER | ----- | ----- | ----- | ----- |

OTHER WATER SYSTEM INFORMATION

Furnish information below for each system not physically connected with another facility. A separate page should be supplied where necessary.

- Present ERC's * that system can efficiently serve. 1129
- Estimated annual increase in ERC's * . 0/5
- List fire fighting facilities and capacities. NONE
- List percent of certificated area where service connections are installed (total for each county). 10%
- What is the current need for system upgrading and/or expansion?
- What are plans for future system upgrading and/or expansion? NONE
- Have questions 6 and 7 been discussed with an engineer (if so, state name and address)? NONE
- Have questions 6 and 7 been discussed with appropriate state sanitary engineering office? NO

* ERC = (Total Gallons Sold / 365 days) / 350 Gallons Per Day

UTILITY NAME: LAKE PLACID UTILITIES, INC.

YEAR OF REPORT
DECEMBER 31, 1995

SYSTEM NAME: _____

CALCULATION OF THE WATER SYSTEMS EQUIVALENT RESIDENTIAL UNITS

| METER SIZE (a) | TYPE OF METER (b) | EQUIVALENT FACTOR (c) | NUMBER OF METERS (d) | TOTAL NUMBER OF METER EQUIVALENTS (c x d) (e) |
|--|--------------------------------------|--------------------------|-------------------------|---|
| 5/8" | Displacement | 1.0 | ----- | |
| 3/4" | Displacement | 1.5 | ----- | |
| 1" | Displacement | 2.5 | ----- | |
| 1 1/2" | Displacement or Turbine | 5.0 | ----- | |
| 2" | Displacement, Compound or Turbine | 8.0 | ----- | |
| 3" | Displacement | 15.0 | ----- | |
| 3" | Compound | 16.0 | ----- | |
| 3" | Turbine | 17.5 | ----- | |
| 4" | Displacement or Compound | 25.0 | ----- | |
| 4" | Turbine | 30.0 | ----- | |
| 6" | Displacement or Compound | 50.0 | ----- | |
| 6" | Turbine | 62.5 | ----- | |
| 8" | Compound | 80.0 | ----- | |
| 8" | Turbine | 90.0 | ----- | |
| 10" | Compound | 115.0 | ----- | |
| 10" | Turbine | 145.0 | ----- | |
| 12" | Turbine | 215.0 | ----- | |
| Total Water System Meter Equivalents ----- | | | | ----- |

CALCULATION OF THE WATER SYSTEMS EQUIVALENT RESIDENTIAL CONNECTIONS

(_____ / 365 days) / 350 gpd = _____
(total gallons sold)

**SEWER
OPERATION
SECTION**

UTILITY NAME: LAKE PLACID UTILITIES INC.

YEAR OF REPORT
DECEMBER 31, 1995

SEWER UTILITY PLANT ACCOUNTS

| ACCT. NO. (a) | ACCOUNT NAME (b) | PREVIOUS YEAR (c) | ADDITIONS (d) | RETIREMENTS (e) |
|---------------|---|-------------------|---------------|-----------------|
| 351 | Organization | \$ 26,952 | \$ 0 | \$ |
| 352 | Franchises | 1,250 | 0 | |
| 353 | Land and Land Rights | 17,769 | 0 | |
| 354 | Structures and Improvements | 39,581 | 0 | |
| 360 | Collection Sewers - Force | 41,690 | 100 | |
| 361 | Collection Sewers - Gravity | 34,905 | 0 | |
| 362 | Special Collecting Structures | 0 | 0 | |
| 363 | Services to Customers | 11,755 | 2,947 | |
| 364 | Flow Measuring Devices | 0 | 0 | |
| 365 | Flow Measuring Installations | 0 | 0 | |
| 370 | Receiving Wells | 0 | 3,168 | |
| 371 | Pumping Equipment | 97,197 | 15,738 | |
| 380 | Treatment and Disposal Equip. | 0 | 0 | |
| 381 | Plant Sewers | 40,393 | 26,279 | 266 |
| 382 | Outfall Sewer Lines | 1,940 | 0 | |
| 389 | Other Plant and Miscellaneous Equipment | 0 | 0 | |
| 390 | Office Furniture and Equip. | 0 | 0 | |
| 391 | Transportation Equipment | 0 | 0 | |
| 392 | Stores Equipment | 0 | 0 | |
| 393 | Tools, Shop and Garage Equip. | 851 | 0 | |
| 394 | Laboratory Equipment | 0 | 0 | |
| 395 | Power Operated Equipment | 0 | 0 | |
| 396 | Communication Equipment | 0 | 0 | |
| 397 | Miscellaneous Equipment | 0 | 0 | |
| 398 | Other Tangible Plant | 0 | 0 | |
| | Total Sewer Plant | \$ 314,283 | \$ 48,232 | \$ 266 |

NOTE: Any adjustments made to reclassify property from one account to another must be footnoted.

SEWER UTILITY PLANT MATRIX

| CURRENT YEAR (f) | .1 INTANGIBLE PLANT (g) | .2 COLLECTION PLANT (h) | .3 SYSTEM PUMPING PLANT (j) | .4 TREATMENT AND DISPOSAL PLANT (i) | .5 GENERAL PLANT (k) |
|-------------------|----------------------------|----------------------------|--------------------------------|--|-------------------------|
| \$ 26,952 | \$ 26,952 | \$ XXXXXXXXXXXX | \$ XXXXXXXXXXXX | \$ XXXXXXXXXXXX | \$ XXXXXXXXXXXX |
| 1,250 | 1,250 | XXXXXXXXXXXX | XXXXXXXXXXXX | XXXXXXXXXXXX | XXXXXXXXXXXX |
| 17,769 | XXXXXXXXXXXX | 17,769 | 0 | 0 | 0 |
| 39,581 | XXXXXXXXXXXX | 39,581 | 0 | 0 | 0 |
| 41,790 | XXXXXXXXXXXX | 41,790 | XXXXXXXXXXXX | XXXXXXXXXXXX | XXXXXXXXXXXX |
| 34,905 | XXXXXXXXXXXX | 34,905 | XXXXXXXXXXXX | XXXXXXXXXXXX | XXXXXXXXXXXX |
| 0 | XXXXXXXXXXXX | 0 | XXXXXXXXXXXX | XXXXXXXXXXXX | XXXXXXXXXXXX |
| 14,702 | XXXXXXXXXXXX | 14,702 | XXXXXXXXXXXX | XXXXXXXXXXXX | XXXXXXXXXXXX |
| 0 | XXXXXXXXXXXX | 0 | XXXXXXXXXXXX | XXXXXXXXXXXX | XXXXXXXXXXXX |
| 0 | XXXXXXXXXXXX | 0 | XXXXXXXXXXXX | XXXXXXXXXXXX | XXXXXXXXXXXX |
| 3,168 | XXXXXXXXXXXX | XXXXXXXXXXXX | 3,168 | XXXXXXXXXXXX | XXXXXXXXXXXX |
| 112,935 | XXXXXXXXXXXX | XXXXXXXXXXXX | 112,935 | XXXXXXXXXXXX | XXXXXXXXXXXX |
| 0 | XXXXXXXXXXXX | XXXXXXXXXXXX | XXXXXXXXXXXX | 0 | XXXXXXXXXXXX |
| 66,406 | XXXXXXXXXXXX | XXXXXXXXXXXX | XXXXXXXXXXXX | 66,406 | XXXXXXXXXXXX |
| 1,940 | XXXXXXXXXXXX | XXXXXXXXXXXX | XXXXXXXXXXXX | 1,940 | XXXXXXXXXXXX |
| 0 | 0 | 0 | 0 | 0 | XXXXXXXXXXXX |
| 0 | 0 | 0 | 0 | 0 | XXXXXXXXXXXX |
| 0 | XXXXXXXXXXXX | XXXXXXXXXXXX | XXXXXXXXXXXX | XXXXXXXXXXXX | 0 |
| 0 | XXXXXXXXXXXX | XXXXXXXXXXXX | XXXXXXXXXXXX | XXXXXXXXXXXX | 0 |
| 0 | XXXXXXXXXXXX | XXXXXXXXXXXX | XXXXXXXXXXXX | XXXXXXXXXXXX | 0 |
| 851 | XXXXXXXXXXXX | XXXXXXXXXXXX | XXXXXXXXXXXX | XXXXXXXXXXXX | 851 |
| 0 | XXXXXXXXXXXX | XXXXXXXXXXXX | XXXXXXXXXXXX | XXXXXXXXXXXX | 0 |
| 0 | XXXXXXXXXXXX | XXXXXXXXXXXX | XXXXXXXXXXXX | XXXXXXXXXXXX | 0 |
| 0 | XXXXXXXXXXXX | XXXXXXXXXXXX | XXXXXXXXXXXX | XXXXXXXXXXXX | 0 |
| 0 | XXXXXXXXXXXX | XXXXXXXXXXXX | XXXXXXXXXXXX | XXXXXXXXXXXX | 0 |
| 0 | XXXXXXXXXXXX | XXXXXXXXXXXX | XXXXXXXXXXXX | XXXXXXXXXXXX | 0 |
| 0 | XXXXXXXXXXXX | XXXXXXXXXXXX | XXXXXXXXXXXX | XXXXXXXXXXXX | 0 |
| 0 | XXXXXXXXXXXX | XXXXXXXXXXXX | XXXXXXXXXXXX | XXXXXXXXXXXX | 0 |
| 0 | XXXXXXXXXXXX | XXXXXXXXXXXX | XXXXXXXXXXXX | XXXXXXXXXXXX | 0 |
| <u>\$ 362,249</u> | <u>\$ 28,202</u> | <u>\$ 148,747</u> | <u>\$ 116,103</u> | <u>\$ 68,346</u> | <u>\$ 851</u> |

UTILITY NAME: LAKE PLACID UTILITIES INC.

| |
|-------------------------------------|
| YEAR OF REPORT DECEMBER 31, 1995 |
|-------------------------------------|

SEWER UTILITY EXPENSE ACCOUNTS

| ACCT. NO. (a) | ACCOUNT NAME (b) | CURRENT YEAR (c) | .1 SOURCE OF SUPPLY AND EXPENSES - OPERATIONS (d) | .2 SOURCE OF SUPPLY AND EXPENSES - MAINTENANCE (e) |
|---------------------|--|------------------------|--|---|
| 701 | Salaries and Wages - Employees | \$ 2,484 | \$ 75 | \$ 298 |
| 703 | Salaries and Wages - Officers, Directors and Majority Stockholders | | | |
| 704 | Employee Pensions and Benefits | 890 | 27 | 62 |
| 710 | Purchased Sewage Treatment | | | XXXXXXXXXXXX |
| 711 | Sludge Removal Expense | 620 | | XXXXXXXXXXXX |
| 715 | Purchased Power | 6,241 | | XXXXXXXXXXXX |
| 716 | Fuel for Power Purchased | | | |
| 718 | Chemicals | 1,874 | | |
| 720 | Materials and Supplies | 13,585 | 543 | 2,174 |
| 731 | Contractual Services - Eng. | 4 | | |
| 732 | Contractual Services - Acct. | 163 | | |
| 733 | Contractual Services - Legal | 44 | | |
| 734 | Contractual Services - Management Fees | 361 | | |
| 735 | Contractual Services - Other | 722 | | |
| 742 | Rental of Equipment Property | | | |
| 750 | Transportation Expenses | 1,289 | 39 | 155 |
| 756 | Insurance - Vehicle | | | |
| 757 | Insurance - General Liability | | | |
| 758 | Insurance - Workman's Compensation | | | |
| 759 | Insurance - Other | 492 | | |
| 760 | Advertising Expense | | XXXXXXXXXXXX | XXXXXXXXXXXX |
| 766 | Regulatory Commission Expenses - Amortization of Rate Case Expense | 0 | XXXXXXXXXXXX | XXXXXXXXXXXX |
| 767 | Regulatory Commission Expenses - Other | 0 | | |
| 770 | Bad Debt Expense | 6 | XXXXXXXXXXXX | XXXXXXXXXXXX |
| 775 | Miscellaneous Expenses | 2,515 | | |
| | Total Sewer Utility Expenses | \$ 31,290 | \$ 684 | \$ 2,689 |

SEWER EXPENSE ACCOUNT MATRIX

| .3 | .4 | .5 | .6 | .7 | .8 |
|-----------------------------------|------------------------------------|--|---|-------------------------------|---------------------------------------|
| PUMPING EXPENSES - OPERATIONS (f) | PUMPING EXPENSES - MAINTENANCE (g) | TREATMENT & DISPOSAL EXPENSES - OPERATIONS (h) | TREATMENT DISPOSAL EXPENSES - MAINTENANCE (i) | CUSTOMER ACCOUNTS EXPENSE (j) | ADMINISTRATIVE & GENERAL EXPENSES (k) |
| \$ 497 | \$ 124 | \$ 1,192 | \$ 298 | \$ | \$ |
| 107 | \$ 45 | \$ 267 | \$ 107 | 275 | |
| XXXXXXXXXXXXX | XXXXXXXXXXXXX | XXXXXXXXXXXXX | XXXXXXXXXXXXX | XXXXXXXXXXXXX | XXXXXXXXXXXXX |
| 1,560 | XXXXXXXXXXXXX | 620 | XXXXXXXXXXXXX | | |
| | XXXXXXXXXXXXX | 4,681 | XXXXXXXXXXXXX | XXXXXXXXXXXXX | XXXXXXXXXXXXX |
| 3,260 | 815 | 1,874 | | | |
| | | 5,434 | 1,359 | | |
| | | 4 | | | 163 |
| | | | | | 44 |
| | | | | 361 | |
| | | | | 361 | 361 |
| 258 | 64 | 619 | 154 | | |
| | | | | | 492 |
| XXXXXXXXXXXXX | XXXXXXXXXXXXX | XXXXXXXXXXXXX | XXXXXXXXXXXXX | XXXXXXXXXXXXX | - |
| XXXXXXXXXXXXX | XXXXXXXXXXXXX | XXXXXXXXXXXXX | XXXXXXXXXXXXX | XXXXXXXXXXXXX | - |
| XXXXXXXXXXXXX | XXXXXXXXXXXXX | XXXXXXXXXXXXX | XXXXXXXXXXXXX | XXXXXXXXXXXXX | - |
| XXXXXXXXXXXXX | XXXXXXXXXXXXX | XXXXXXXXXXXXX | XXXXXXXXXXXXX | XXXXXXXXXXXXX | - |
| | | | | | - |
| XXXXXXXXXXXXX | XXXXXXXXXXXXX | XXXXXXXXXXXXX | XXXXXXXXXXXXX | 6 | XXXXXXXXXXXXX |
| | | | | 1,258 | 1,257 |
| \$ 5,682 | \$ 1,048 | \$ 14,691 | \$ 1,918 | \$ 2,261 | \$ 2,317 |

UTILITY NAME: LAKE PLACID UTILITIES INC.

YEAR OF REPORT
DECEMBER 31, 1995

SEWER OPERATING REVENUE

| ACCT. NO. (a) | DESCRIPTION (b) | BEGINNING YEAR NO. CUSTOMERS (c) | YEAR END NUMBER CUSTOMERS (d) | AMOUNTS (e) |
|---------------|-----------------------------------|----------------------------------|-------------------------------|-------------|
| | Operating Revenues: | | | |
| | Flat Rate Revenues | | | \$ |
| 521.1 | Residential Revenues | 214 | 235 | \$ 22,681 |
| 521.2 | Commercial Revenues | | | |
| 521.3 | Industrial Revenues | | | |
| 521.4 | Revenues From Public Authorities | | | |
| 521.5 | Multiple Family Dwelling Revenues | | | |
| 521.6 | Other Revenues | | | |
| | Total Flat Rate Revenues | 214 | 235 | \$ 22,681 |
| 522.1 | Residential Revenues | | | \$ |
| 522.2 | Commercial Revenues | | | |
| 522.3 | Industrial Revenues | | | |
| 522.4 | Revenues From Public Authorities | | | \$ |
| 522.5 | Multiple Family Dwelling Revenues | | | |
| | Total Measured Revenues | | | \$ |
| 523 | Revenues From Public Authorities | | | |
| 524 | Revenues From Other Systems | | | |
| 525 | Interdepartmental Revenues | | | |
| | Totals | 214 | 235 | \$ 22,681 |
| | Other Sewer Revenues: | | | |
| 530 | Guaranteed Revenues | | | \$ |
| 531 | Sale Of Sludge | | | |
| 532 | Forfeited Discounts | | | |
| 534 | Rents From Sewer Property | | | |
| 535 | Interdepartmental Rents | | | |
| 536 | Other Sewer Revenues | | | 187 |
| | Total Other Sewer Revenues | | | \$ 187 |
| | Total Sewer Operating Revenues | | | \$ 22,868 |

UTILITY NAME: LAKE PLACID UTILITIES INC.

YEAR OF REPORT
DECEMBER 31, 1995

ANALYSIS OF ENTRIES IN SEWER ACCUMULATED DEPRECIATION

| ACCT. NO. (a) | ACCOUNT NAME (b) | BALANCE AT BEGINNING OF YEAR (c) | ACCRUALS (d) | OTHER CREDITS * (e) | TOTAL CREDITS (d+e) (f) |
|------------------|--|-------------------------------------|-----------------|------------------------|----------------------------|
| 354 | Structures and Improvements | \$ 28,025 | \$ 1,239 | \$ (2,604) | \$ (1,365) |
| 360 | Collection Sewers - Force | 30,415 | * 1,392 | (3,575) | (2,183) |
| 361 | Collection Sewers - Gravity | 18,946 | 775 | 3,472 | 4,247 |
| 362 | Special collecting Structures | 0 | 0 | 0 | 0 |
| 363 | Services to Customers | 5,628 | 359 | 3,154 | 3,513 |
| 364 | Flow Measuring Devices | 0 | 0 | 0 | 0 |
| 365 | Flow Measuring Installations | 0 | 0 | 0 | 0 |
| 370 | Receiving Wells | 0 | 91 | 2,034 | 2,125 |
| 371 | Pumping Equipment | 76,576 | * 3,888 | (14,151) | (10,263) |
| 380 | Treatment and Disposal Equip. | 0 | 0 | 0 | 0 |
| 381 | Plant Sewers | 36,321 | 1,326 | (6,380) | (5,054) |
| 382 | Outfall Sewer Lines | 1,271 | 64 | (24) | 40 |
| 389 | Other Plant and Miscellaneous | 0 | 0 | 0 | 0 |
| 331 | Equipment | 0 | 0 | 0 | 0 |
| 390 | Office Equipment and Equip. | 0 | 0 | 0 | 0 |
| 391 | Transportation Equipment | 0 | 0 | 0 | 0 |
| 392 | Stores Equipment | 0 | 0 | 0 | 0 |
| 393 | Tools, Shop and Garage Equip. | 586 | 53 | (39) | 14 |
| 394 | Laboratory Equipment | 0 | 0 | 0 | 0 |
| 395 | Power Operated Equipment | 0 | 0 | 0 | 0 |
| 396 | Communication Equipment | 0 | 0 | 0 | 0 |
| 397 | Miscellaneous Equipment | 0 | 0 | 0 | 0 |
| 398 | Other Tangible Plant | 0 | 0 | 0 | 0 |
| | Adj per commission PSC-95-0574-POF-WS (offset Accum/amort of CIA) | 0 | 0 | 0 | 0 |
| | Total Depreciable Sewer Plant In Service | \$ 197,768 | \$ 9,187 | \$ (18,113) | \$ (8,926) |

* Specify nature of transaction.
Use () to denote reversal entries.

The "Other Credits (e)" in 1995 are the result of a change in the policy of recording depreciation expense by specific asset account per Docket # 940917-WS. The balance in "Other Credits (e)" is offset by the change in Accumulated Amortization on Pg F-6.

UTILITY NAME: LAKE PLACID UTILITIES, INC.

YEAR OF REPORT
DECEMBER 31, 1995

UTILITY SYSTEM: _____

PUMPING EQUIPMENT

| | 1 | 2 | 3 | | | |
|---|-------|--------|-------|--|--|--|
| Lift station number | | | | | | |
| Make or type and nameplate data of pump | | | | | | |
| Year installed | | | | | | |
| Rated capacity | | | | | | |
| Size | 7 1/2 | 7 1/2 | 7 1/2 | | | |
| Power: | BOTH | BOTH | BOTH | | | |
| Electric | X | X | X | | | |
| Mechanical | | | | | | |
| Nameplate data of motor | | GOULDS | | | | |

| | | | | | | |
|---|--|--|--|--|--|--|
| Lift station number | | | | | | |
| Make or type and nameplate data of pump | | | | | | |
| Year installed | | | | | | |
| Rated capacity | | | | | | |
| Size | | | | | | |
| Power: | | | | | | |
| Electric | | | | | | |
| Mechanical | | | | | | |
| Nameplate data of motor | | | | | | |

SERVICE CONNECTIONS

| | | | | | | |
|---|-----|--|--|--|--|--|
| Size (inches) | 4" | | | | | |
| Type (PVC, VCP, etc.) | | | | | | |
| Average length | | | | | | |
| Number of active service connections | | | | | | |
| *Beginning of year | 126 | | | | | |
| Added during year | 31 | | | | | |
| Retired during year | | | | | | |
| End of year | 157 | | | | | |
| Give full particulars concerning inactive connections | | | | | | |

* FIGURE ON 1994 ANNUAL REPORT WAS AN ESTIMATE.

UTILITY NAME: LAKE PLACID UTILITIES, INC.

YEAR OF REPORT
DECEMBER 31, 1995

UTILITY SYSTEM: _

COLLECTING MAINS

| COLLECTING MAINS: | | | | | | | |
|--------------------------------|-----|---------|-----|-----|-----|-----|-----|
| Size (inches) | --- | 8" | --- | --- | --- | --- | --- |
| Type of main | --- | GRAVITY | --- | --- | --- | --- | --- |
| Length of main (nearest foot): | | | | | | | |
| Beginning of year | --- | 2,398 | --- | --- | --- | --- | --- |
| Added during year | --- | - | --- | --- | --- | --- | --- |
| Retired during year | --- | - | --- | --- | --- | --- | --- |
| End of year | --- | 2,398 | --- | --- | --- | --- | --- |
| MANHOLES: | | | | | | | |
| Size | --- | --- | --- | --- | --- | --- | --- |
| Type | --- | --- | --- | --- | --- | --- | --- |
| Number: | | | | | | | |
| Beginning of year | --- | --- | --- | --- | --- | --- | --- |
| Added during year | --- | --- | --- | --- | --- | --- | --- |
| Retired during year | --- | --- | --- | --- | --- | --- | --- |
| End of year | --- | --- | --- | --- | --- | --- | --- |

FORCE MAINS

| FORCE MAINS: | | | | | | | |
|--------------------------------|-----|-------|-------|-----|-----|-----|-----|
| Size (inches) | --- | 4" | 8" | --- | --- | --- | --- |
| Type of main | --- | --- | --- | --- | --- | --- | --- |
| Length of main (nearest foot): | | | | | | | |
| Beginning of year | --- | 3,920 | 3,320 | --- | --- | --- | --- |
| Added during year | --- | - | - | --- | --- | --- | --- |
| Retired during year | --- | - | - | --- | --- | --- | --- |
| End of year | --- | 3,920 | 3,320 | --- | --- | --- | --- |

UTILITY NAME: LAKE PLACID UTILITIES, INC.

YEAR OF REPORT
DECEMBER 31, 1995

UTILITY SYSTEM: _

TREATMENT PLANT

| | | | |
|---------------------------------|-------------------|---|---|
| Manufacturer | MAROLF | - | - |
| Type | EXTENDED AERATION | - | - |
| "Steel" or "Concrete" | CONCRETE | - | - |
| Total Capacity | 100,000 GP | - | - |
| Average Daily Flow | 0.023 | - | - |
| Effluent Disposal | | - | - |
| Total Gallons of Sewage Treated | 8.462 | - | - |

MASTER LIFT STATION PUMPS

| | | | | | |
|--------------------------------|--|--|--|--|--|
| Manufacturer | | | | | |
| Capacity | | | | | |
| Motor : Mfr. | | | | | |
| Horsepower | | | | | |
| Power (Electric or Mechanical) | | | | | |

OTHER SEWER SYSTEM INFORMATION

1. Maximum number of ERC's * which can be served. _ 84 _
 2. Estimated annual increase in ERC's *. _ 327 _
 3. List permit numbers required by Chapter 17-4, Rules of the Department of Environmental Regulation (DER) for systems in operation. _ 10 _
 4. State any plans and estimated completion dates for any enlargements of this system. _ NONE _
 5. If present systems do not meet the requirements of Chapter 17-4, Rules of the DER, submit the following:
 - a. Evaluation of the present plant or plants in regard to meeting the DER rules.
 - b. Plans for funding and construction of the required upgrading.
 - c. Have these plans been coordinated with the DER? _ _
 - d. Do they concur? _ _
 - e. When will construction begin? _ _
 6. In what percent of your certificated area have service connections been installed? _ 26% _
- * ERC = (Total Gallons Treated / 365 days) / 275 Gallons Per Day
- Note: Total Gallons Treated includes both sewage treated and purchased sewage treatment

UTILITY NAME: LAKE PLACID UTILITIES, INC.

YEAR OF REPORT
DECEMBER 31, 1995

UTILITY SYSTEM:

CALCULATION OF THE SEWER SYSTEMS EQUIVALENT RESIDENTIAL UNITS

| METER SIZE* (a) | TYPE OF METER* (b) | EQUIVALENT FACTOR (c) | NUMBER OF METERS (d) | TOTAL NUMBER OF METER EQUIVALENTS (c x d) (e) |
|--|--------------------------------------|--------------------------|-------------------------|---|
| 5/8" | Displacement | 1.0 | ----- | ----- |
| 3/4" | Displacement | 1.5 | ----- | ----- |
| 1" | Displacement | 2.5 | ----- | ----- |
| 1 1/2" | Displacement or Turbine | 5.0 | ----- | ----- |
| 2" | Displacement, Compound or Turbine | 8.0 | ----- | ----- |
| 3" | Displacement | 15.0 | ----- | ----- |
| 3" | Compound | 16.0 | ----- | ----- |
| 3" | Turbine | 17.5 | ----- | ----- |
| 4" | Displacement or Compound | 25.0 | ----- | ----- |
| 4" | Turbine | 30.0 | ----- | ----- |
| 6" | Displacement or Compound | 50.0 | ----- | ----- |
| 6" | Turbine | 62.5 | ----- | ----- |
| 8" | Compound | 80.0 | ----- | ----- |
| 8" | Turbine | 90.0 | ----- | ----- |
| 10" | Compound | 115.0 | ----- | ----- |
| 10" | Turbine | 145.0 | ----- | ----- |
| 12" | Turbine | 215.0 | ----- | ----- |
| Total Sewer System Meter Equivalents ----- | | | | 0 |

CALCULATION OF THE SEWER SYSTEMS EQUIVALENT RESIDENTIAL CONNECTIONS

(/ 365 days) / 350 gpd =
(total gallons sold)