

FPSC Staff Workshop- Smart Meters

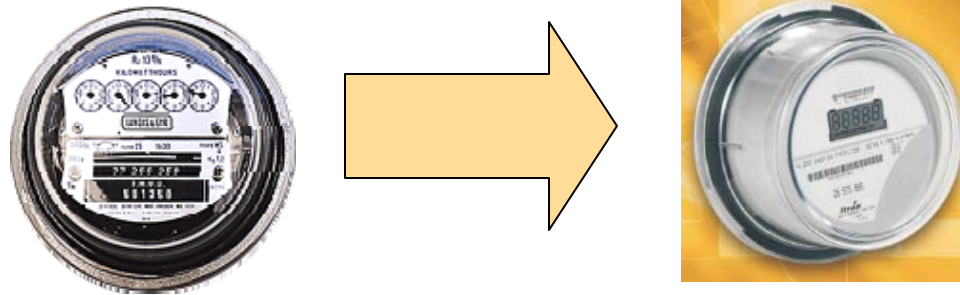
Progress Energy Florida

Daniel Woodall- Grid Modernization
Planning & Regulatory Support Leader



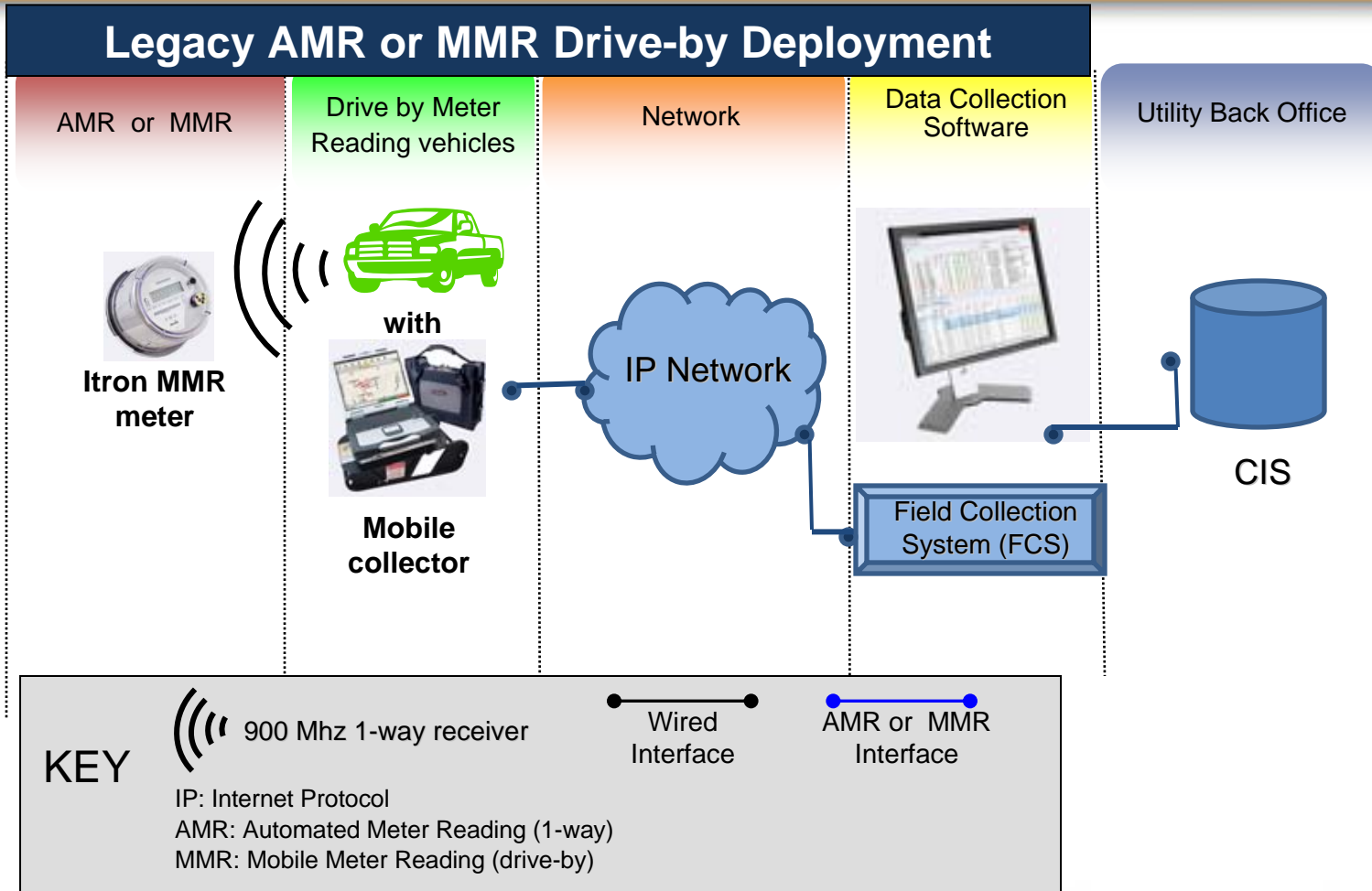
Metering Technologies at PEF

Progressive Trend Toward Automation:

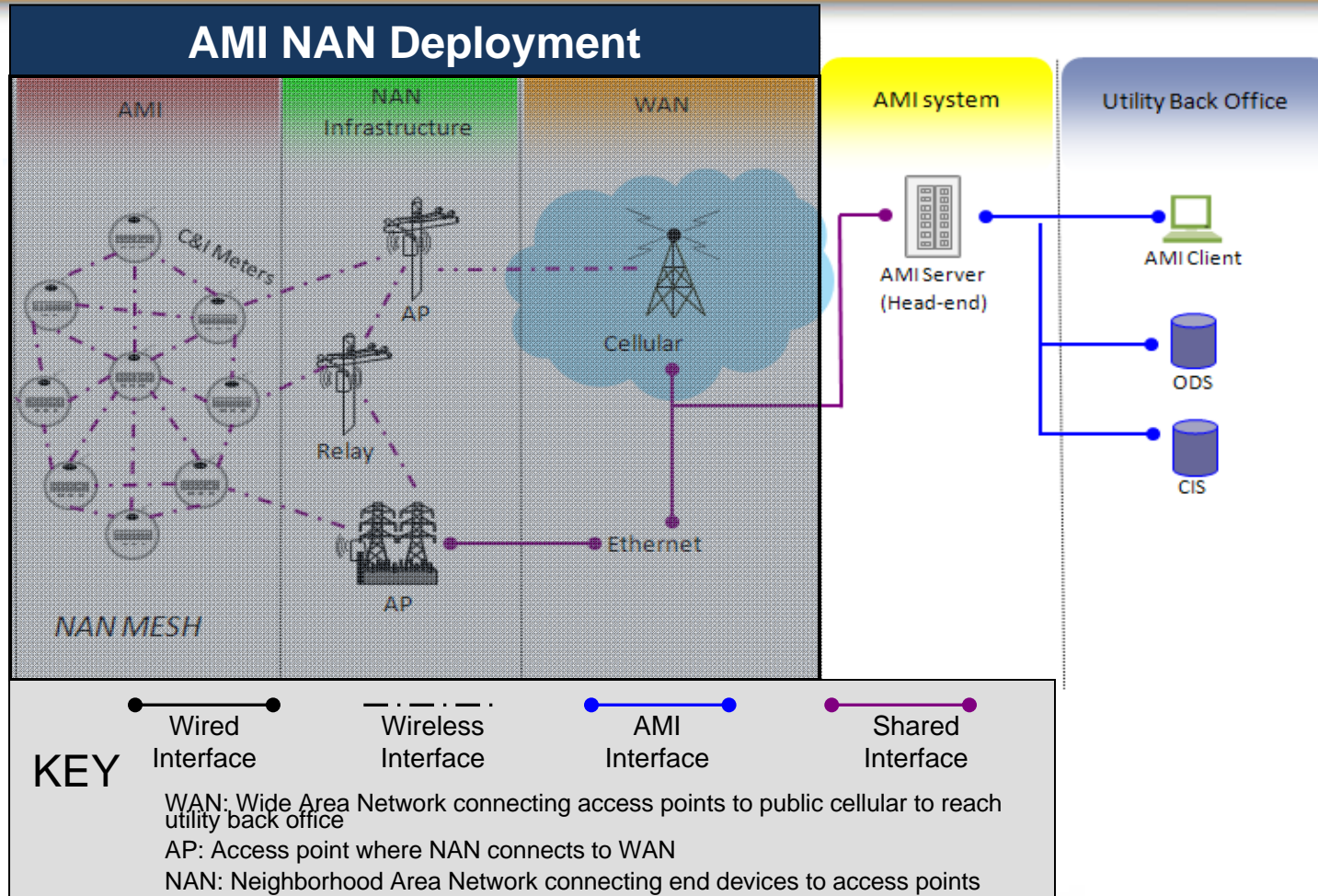


Customer Type	Technology	Numbers	Transition Timeframe
Large Commercial/Industrial (over 1MW)	Public Cellular AMR	1646	Completed in 90s
Residential & Small Commercial	Drive-by MMR 1-way	1.6M	2005-06
Mid-size Commercial	MESH AMI- 2 way	83K	Oct. 2012- Oct. 2013

Legacy MMR Technology Platform

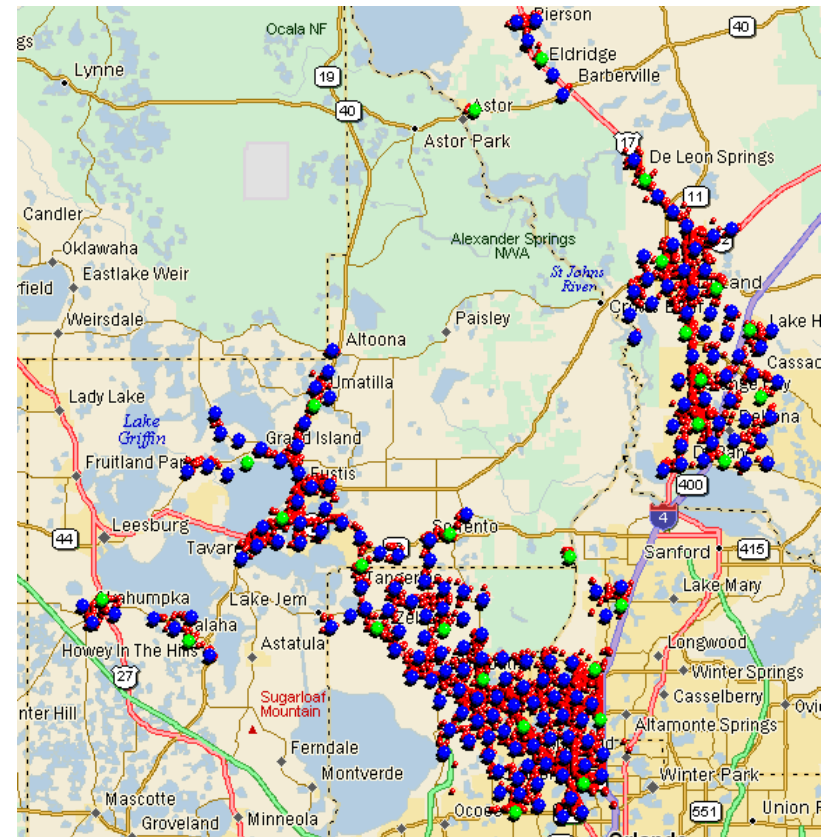


AMI Technology Platform



Sectors for Commercial AMI Deployment

Progress Energy Florida	
Sector 1	Walsingham, St. Petersburg
Sector 2	Clearwater, Zephyrhills, Seven Springs
Sector 3	Highlands, Lake Wales
Sector 4	Buena Vista
Sector 5	Jamestown
Sector 6	Apopka, Deland
Sector 7	Inverness, Ocala
Sector 8	Monticello



Example: Sector 6 Apopka/Deland

Communications Plans

- Integrating lessons learned and best practices from across industry
 - Value of multiple touches
 - Access to information via web
 - Leveraging account representative organization
- Some commercial accounts require special appointments & coordination
 - Experience and best practices learned from Duke Ohio value add
 - Extra care and touches have yielded positive results
- Any alternatives to standard AMI smart meter will have operational impacts and costs
 - All related impacts should be recovered from customers who benefit