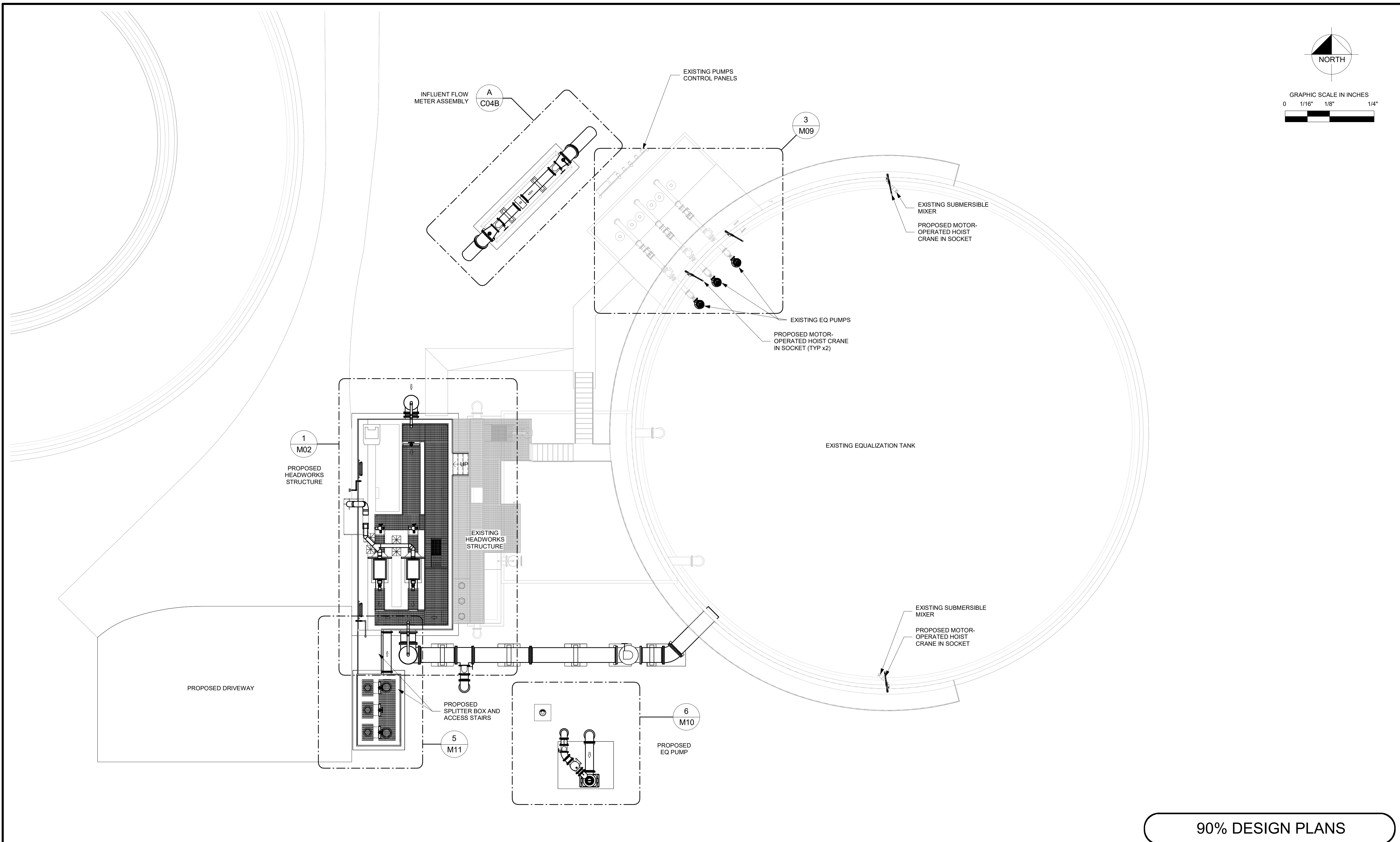


GRAPHIC SCALE IN INCHES
 0 1/16" 1/8" 1/4"



90% DESIGN PLANS

B:\149685026-Wekiva-Headworks\Proposed-Headworks.rvt

No.	Revisions	By	Date
A	60% DESIGN	RLI	5/8/20

Kimley»Horn
 © 2020 KIMLEY-HORN AND ASSOCIATES, INC.
 189 S. ORANGE AVENUE, SUITE 1000, ORLANDO, FL 32801
 PHONE: 407-898-1511
 WWW.KIMLEY-HORN.COM CA 00000696

KHA PROJECT
 149685026
 DATE
 5/8/20
 SCALE: AS SHOWN
 DESIGNED BY: ATH
 DRAWN BY: RLL
 CHECKED BY: SNR

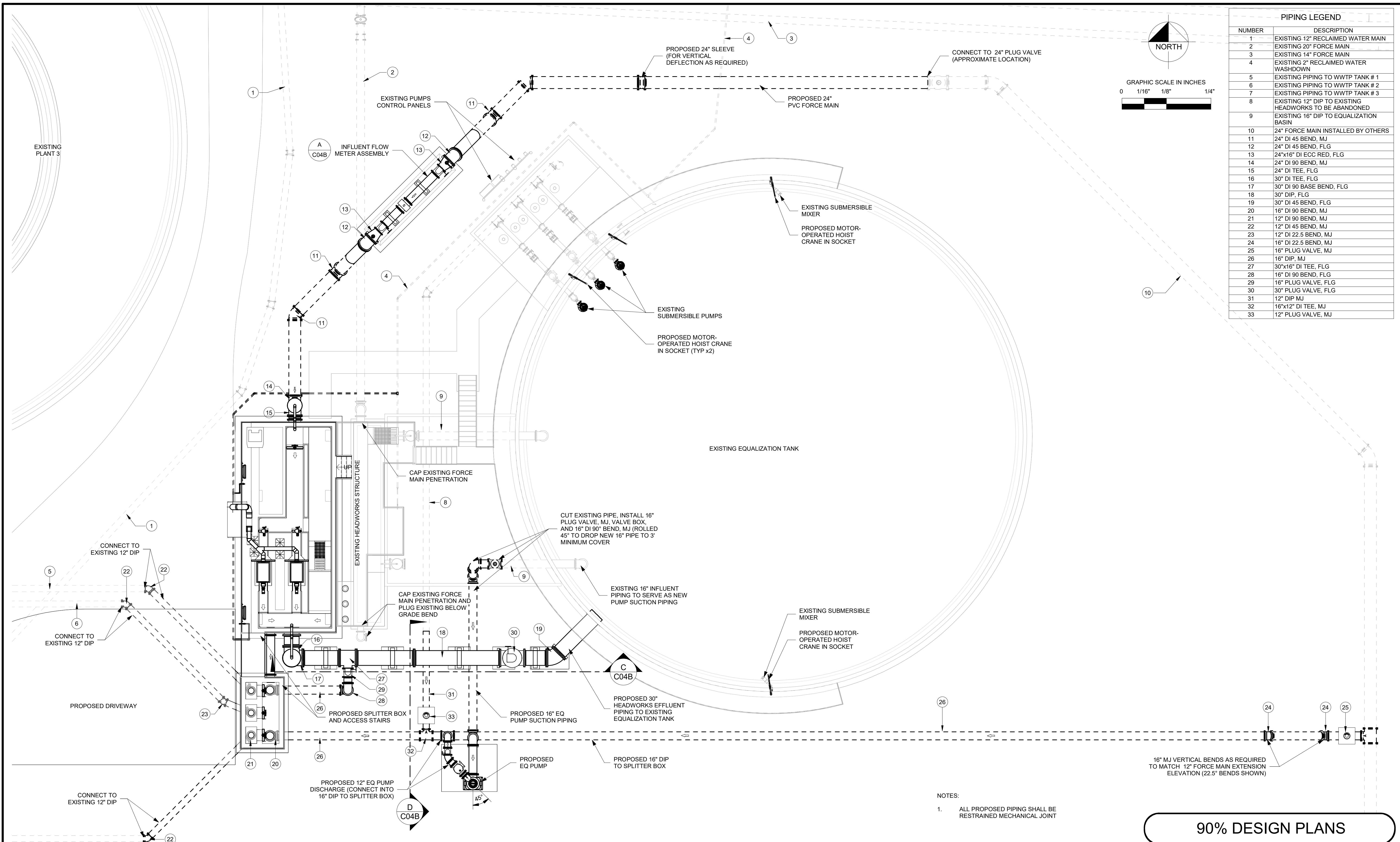
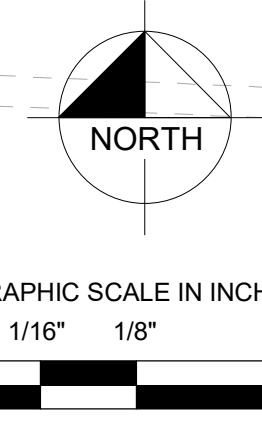
UTILITIES, INC. OF FLORIDA
 WEKIVA HEADWORKS IMPROVEMENTS

LICENSED PROFESSIONAL:
 NICOLE E. McCONNELL, P.E.
 FL LICENSE NUMBER
 79789
 DATE:

PROPOSED SITE PLAN

SHEET NUMBER
 C03

PIPING LEGEND	
NUMBER	DESCRIPTION
1	EXISTING 12" RECLAIMED WATER MAIN
2	EXISTING 20" FORCE MAIN
3	EXISTING 14" FORCE MAIN
4	EXISTING 2" RECLAIMED WATER WASHDOWN
5	EXISTING PIPING TO WWTP TANK # 1
6	EXISTING PIPING TO WWTP TANK # 2
7	EXISTING PIPING TO WWTP TANK # 3
8	EXISTING 12" DIP TO EXISTING HEADWORKS TO BE ABANDONED
9	EXISTING 16" DIP TO EQUALIZATION BASIN
10	24" FORCE MAIN INSTALLED BY OTHERS
11	24" DI 45 BEND, MJ
12	24" DI 45 BEND, FLG
13	24"x16" DI ECC RED, FLG
14	24" DI 90 BEND, MJ
15	24" DI TEE, FLG
16	30" DI TEE, FLG
17	30" DI 90 BASE BEND, FLG
18	30" DIP, FLG
19	30" DI 45 BEND, FLG
20	16" DI 90 BEND, MJ
21	12" DI 90 BEND, MJ
22	12" DI 45 BEND, MJ
23	12" DI 22.5 BEND, MJ
24	16" DI 22.5 BEND, MJ
25	16" PLUG VALVE, MJ
26	16" DIP, MJ
27	30"x16" DI TEE, FLG
28	16" DI 90 BEND, FLG
29	16" PLUG VALVE, FLG
30	30" PLUG VALVE, FLG
31	12" DIP, MJ
32	16"x12" DI TEE, MJ
33	12" PLUG VALVE, MJ



NOTES:
1. ALL PROPOSED PIPING SHALL BE RESTRAINED MECHANICAL JOINT

90% DESIGN PLANS

B:\149685026-Wekiva-Headworks\Proposed-Headworks.rvt

No.	Revisions	By	Date
A	60% DESIGN	RLI	5/8/20

Kimley >> Horn

© 2020 KIMLEY-HORN AND ASSOCIATES, INC.
189 S. ORANGE AVENUE, SUITE 1000, ORLANDO, FL 32801
PHONE: 407-898-1511
WWW.KIMLEY-HORN.COM CA 00000696

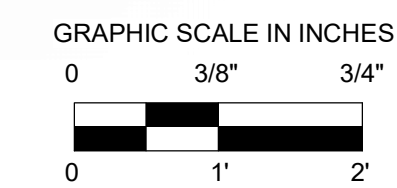
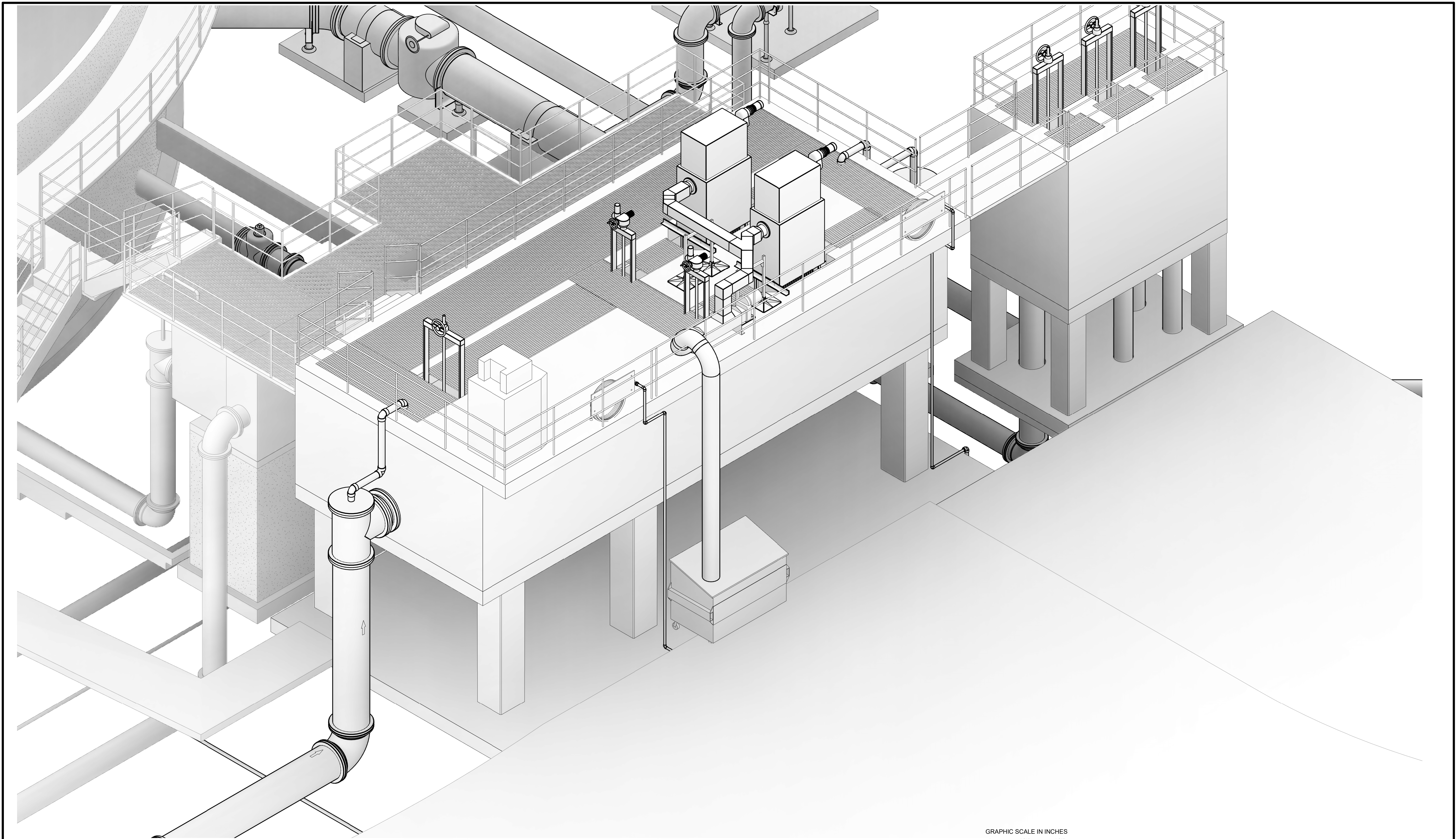
KHA PROJECT
149685026
DATE
5/8/20
SCALE: AS SHOWN
DESIGNED BY: ATH
DRAWN BY: RLI
CHECKED BY: SNR

UTILITIES, INC. OF FLORIDA
WEKIVA HEADWORKS IMPROVEMENTS

LICENSED PROFESSIONAL:
NICOLE E. McCONNELL, P.E.
FL LICENSE NUMBER
79789
DATE:

PROPOSED SITE PIPING PLAN

SHEET NUMBER
C04A



90% DESIGN PLANS

B:\149685026-Wekiva-Headworks\Proposed-Headworks.rvt

No.	Revisions	By	Date
A	60% DESIGN	RLL	5/8/20

Kimley»Horn

© 2020 KIMLEY-HORN AND ASSOCIATES, INC.
 189 S. ORANGE AVENUE, SUITE 1000, ORLANDO, FL 32801
 PHONE: 407-898-1511
 WWW.KIMLEY-HORN.COM CA 00000696

KHA PROJECT
 149685026
 DATE
 5/8/20
 SCALE: AS SHOWN
 DESIGNED BY: ATH
 DRAWN BY: RLL
 CHECKED BY: SNR

UTILITIES, INC. OF FLORIDA
 WEKIVA HEADWORKS IMPROVEMENTS

LICENSED PROFESSIONAL:
 NICOLE E. McCONNELL, P.E.
 FL LICENSE NUMBER
 79789
 DATE:

HEADWORKS ISOMETRIC DETAIL

SHEET NUMBER
 M12