



- LEGEND**
- Project Boundary
  - Mile Post
  - Soils




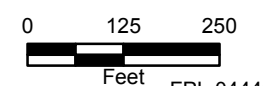
**FIGURE 1  
SOILS MAP**

SHEET 221 of 298      COUNTY: LEON  
 SCALE: 1 in = 250 feet      FILE NAME: NFRC\_Soils\_20200731  
 DRAWN BY: unash      DATE: 9/1/2020 8:05:18 AM


Sources: USDA, 2019; FDOT, 2018, 2019; ECT, 2019; ESRI, 2018

NORTH FLORIDA RESILIENCY CONNECTION





0    125    250  
Feet



N

FPL 044431  
20210015-EI

NAD 1983 StatePlane Florida North FIPS 0903 Feet





- LEGEND**
- Project Boundary
  - Mile Post
  - Soils




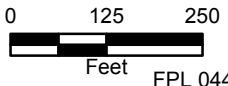
**FIGURE 1  
SOILS MAP**

SHEET 222 of 298      COUNTY: LEON  
 SCALE: 1 in = 250 feet      FILE NAME: NFRC\_Soils\_20200731  
 DRAWN BY: unash      DATE: 9/1/2020 8:05:18 AM


Sources: USDA, 2019; FDOT, 2018, 2019; ECT, 2019; ESRI, 2018

NORTH FLORIDA RESILIENCY CONNECTION





0    125    250  
Feet



N

FPL 044432  
20210015-EI

NAD 1983 StatePlane Florida North FIPS 0903 Feet





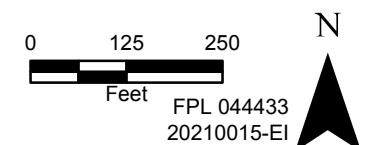
- LEGEND**
- Project Boundary
  - Mile Post
  - Soils



**FIGURE 1  
SOILS MAP**

SHEET 223 of 298 COUNTY: LEON  
 SCALE: 1 in = 250 feet FILE NAME: NFRC\_Soils\_20200731  
 DRAWN BY: unash DATE: 9/1/2020 8:05:18 AM

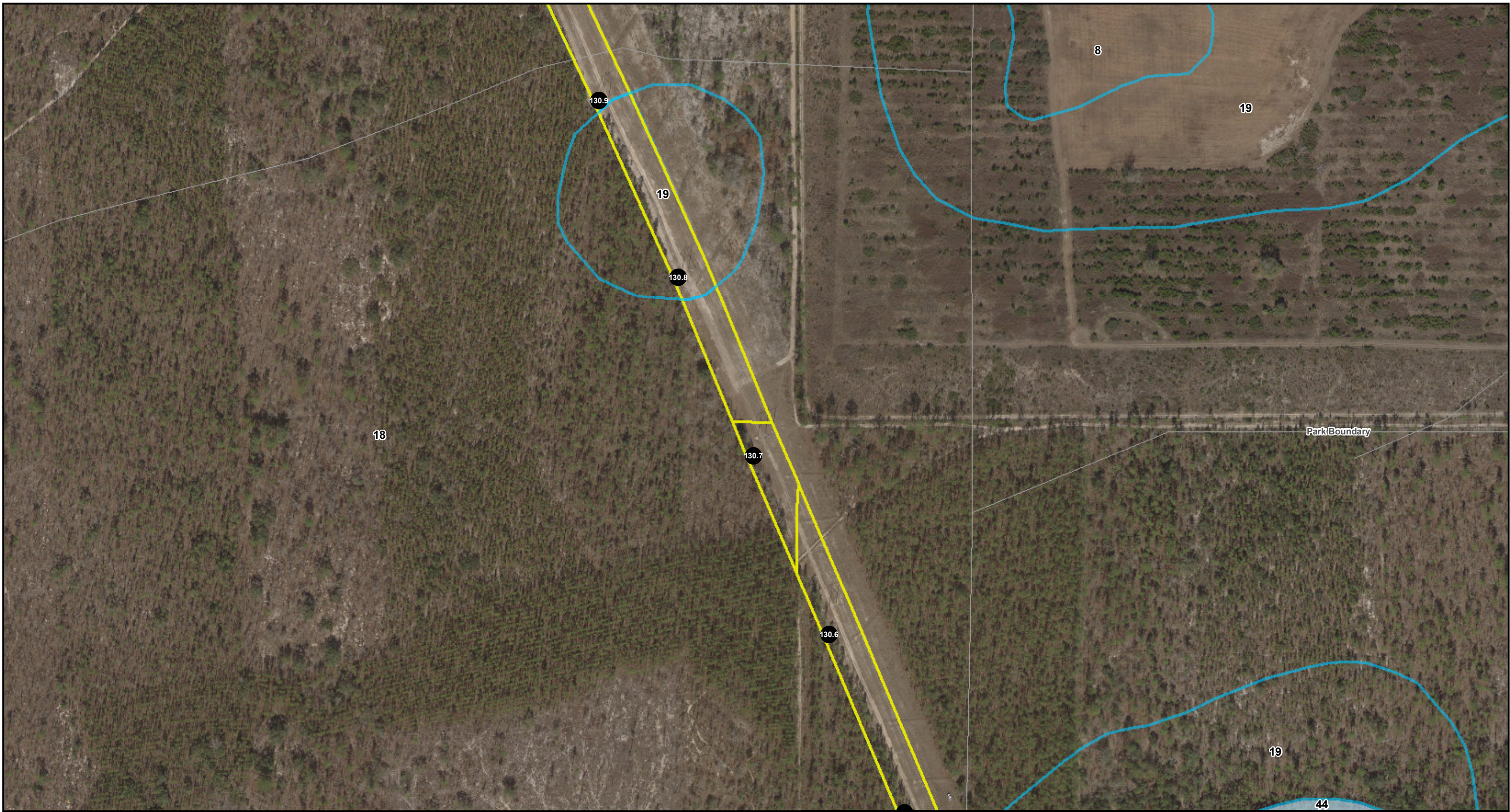
NORTH FLORIDA RESILIENCY CONNECTION



Sources: USDA, 2019; FDOT, 2018, 2019; ECT, 2019; ESRI, 2018

NAD 1983 StatePlane Florida North FIPS 0903 Feet





- LEGEND**
- Project Boundary
  - Mile Post
  - Soils



**FIGURE 1  
SOILS MAP**

SHEET 224 of 298 COUNTY: LEON  
 SCALE: 1 in = 250 feet FILE NAME: NFRC\_Soils\_20200731  
 DRAWN BY: unash DATE: 9/1/2020 8:05:18 AM

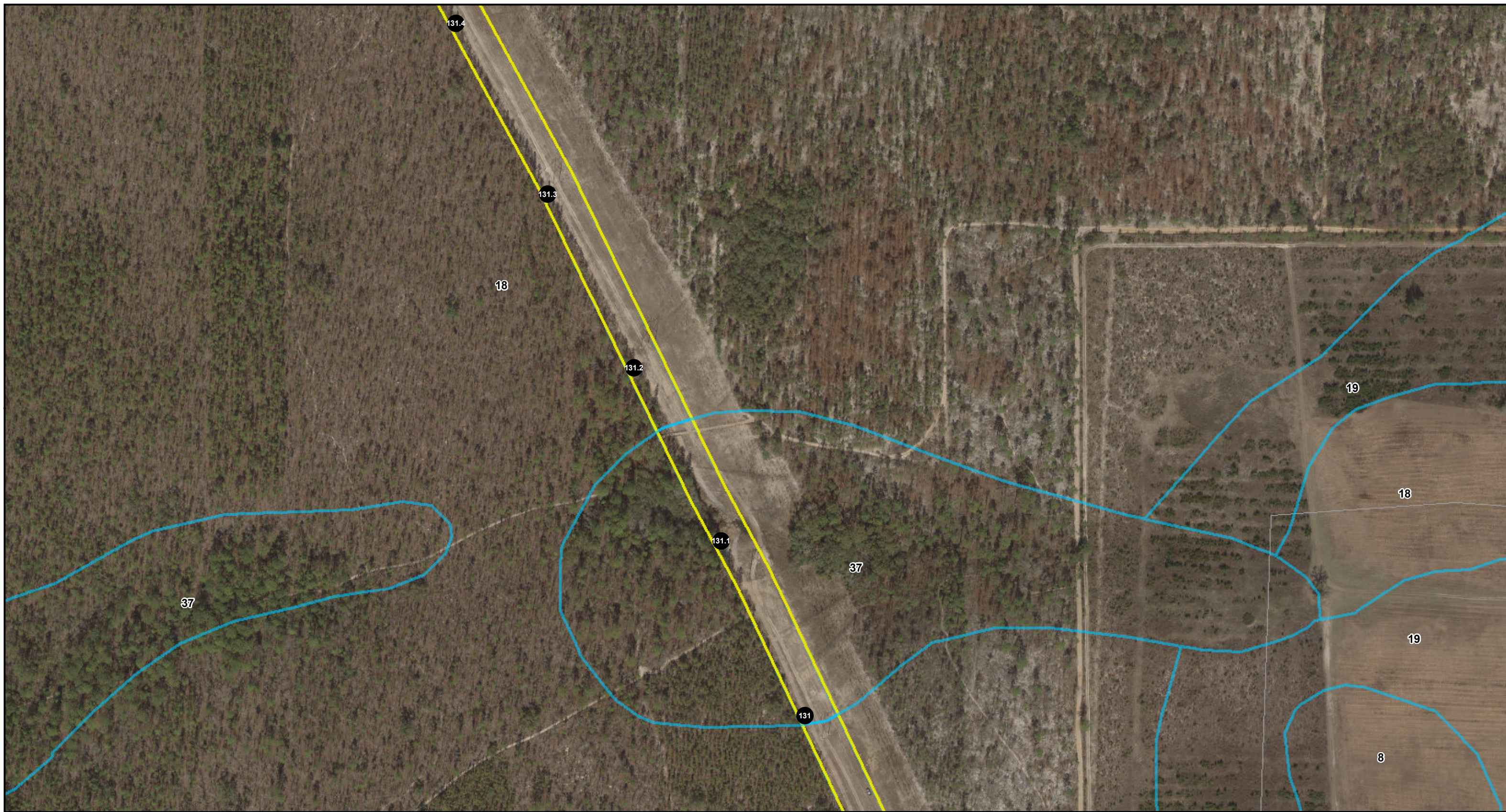
NORTH FLORIDA RESILIENCY CONNECTION



Sources: USDA, 2019; FDOT, 2018, 2019; ECT, 2019; ESRI, 2018

NAD 1983 StatePlane Florida North FIPS 0903 Feet





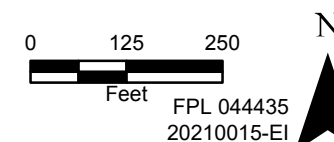
- LEGEND**
- Project Boundary
  - Mile Post
  - Soils



**FIGURE 1  
SOILS MAP**

SHEET 225 of 298      COUNTY: LEON  
 SCALE: 1 in = 250 feet      FILE NAME: NFRC\_Soils\_20200731  
 DRAWN BY: unash      DATE: 9/1/2020 8:05:18 AM

NORTH FLORIDA RESILIENCY CONNECTION






Sources: USDA, 2019; FDOT, 2018, 2019; ECT, 2019; ESRI, 2018

NAD 1983 StatePlane Florida North FIPS 0903 Feet





- LEGEND**
-  Project Boundary
  -  Mile Post
  -  Soils



**FIGURE 1  
SOILS MAP**

SHEET 226 of 298 COUNTY: LEON  
 SCALE: 1 in = 250 feet FILE NAME: NFRC\_Soils\_20200731  
 DRAWN BY: unash DATE: 9/1/2020 8:05:18 AM

NORTH FLORIDA RESILIENCY CONNECTION



FPL 044436  
20210015-EI

Sources: USDA, 2019; FDOT, 2018, 2019; ECT, 2019; ESRI, 2018

NAD 1983 StatePlane Florida North FIPS 0903 Feet





- LEGEND**
- Project Boundary
  - Mile Post
  - Soils




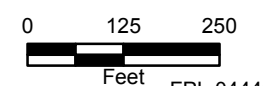
**FIGURE 1  
SOILS MAP**

SHEET 227 of 298      COUNTY: LEON  
 SCALE: 1 in = 250 feet      FILE NAME: NFRC\_Soils\_20200731  
 DRAWN BY: unash      DATE: 9/1/2020 8:05:18 AM


Sources: USDA, 2019; FDOT, 2018, 2019; ECT, 2019; ESRI, 2018

**NORTH FLORIDA RESILIENCY CONNECTION**





0    125    250  
Feet



N

FPL 044437  
20210015-EI

NAD 1983 StatePlane Florida North FIPS 0903 Feet





**LEGEND**

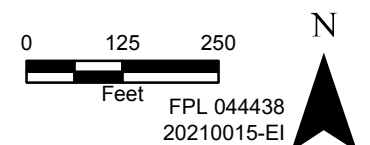
- Project Boundary
- Mile Post
- Soils



**FIGURE 1  
SOILS MAP**

SHEET 228 of 298      COUNTY: LEON  
 SCALE: 1 in = 250 feet      FILE NAME: NFRC\_Soils\_20200731  
 DRAWN BY: unash      DATE: 9/1/2020 8:05:18 AM

NORTH FLORIDA RESILIENCY CONNECTION




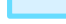


Sources: USDA, 2019; FDOT, 2018, 2019; ECT, 2019; ESRI, 2018

NAD 1983 StatePlane Florida North FIPS 0903 Feet





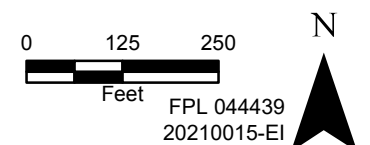
- LEGEND**
-  Project Boundary
  -  Mile Post
  -  Soils
  -  Hydric Soils



**FIGURE 1  
SOILS MAP**

SHEET 229 of 298 COUNTY: LEON  
 SCALE: 1 in = 250 feet FILE NAME: NFRC\_Soils\_20200731  
 DRAWN BY: unash DATE: 9/1/2020 8:05:18 AM

NORTH FLORIDA RESILIENCY CONNECTION




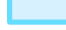


Sources: USDA, 2019; FDOT, 2018, 2019; ECT, 2019; ESRI, 2018

NAD 1983 StatePlane Florida North FIPS 0903 Feet





- LEGEND**
-  Project Boundary
  -  Mile Post
  -  Soils
  -  Hydric Soils




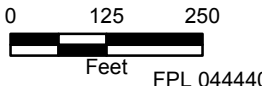
**FIGURE 1  
SOILS MAP**

SHEET 230 of 298      COUNTY: LEON  
 SCALE: 1 in = 250 feet      FILE NAME: NFRC\_Soils\_20200731  
 DRAWN BY: unash      DATE: 9/1/2020 8:05:18 AM


Sources: USDA, 2019; FDOT, 2018, 2019; ECT, 2019; ESRI, 2018

NORTH FLORIDA RESILIENCY CONNECTION





0    125    250  
Feet






N

FPL 044440  
20210015-EI

NAD 1983 StatePlane Florida North FIPS 0903 Feet





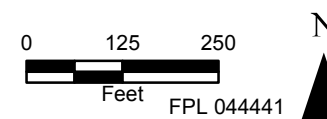
- LEGEND**
-  Project Boundary
  -  Mile Post
  -  Soils



**FIGURE 1  
SOILS MAP**

SHEET 231 of 298 COUNTY: LEON  
 SCALE: 1 in = 250 feet FILE NAME: NFRC\_Soils\_20200731  
 DRAWN BY: unash DATE: 9/1/2020 8:05:18 AM

NORTH FLORIDA RESILIENCY CONNECTION

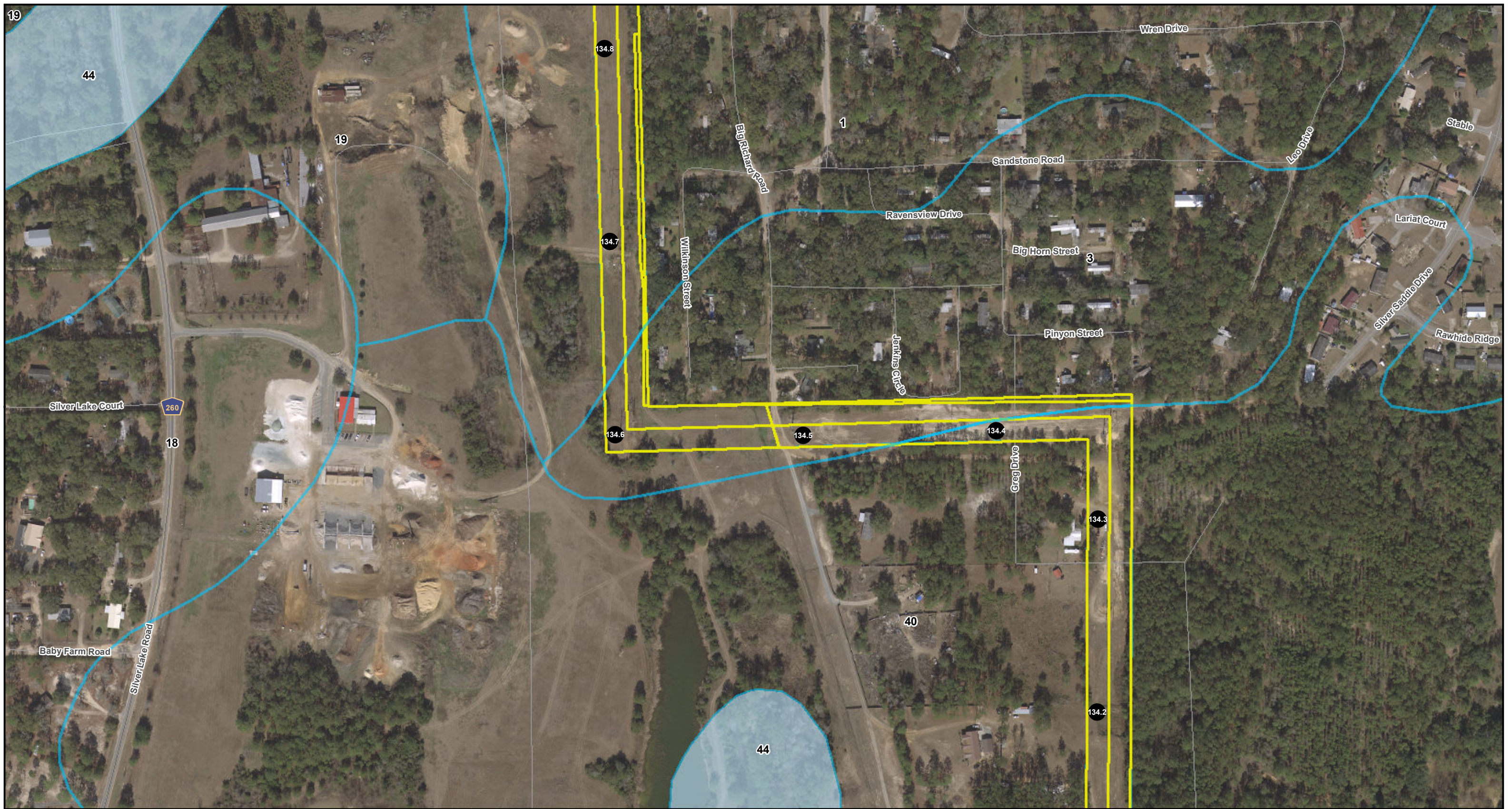


FPL 044441  
20210015-EI

Sources: USDA, 2019; FDOT, 2018, 2019; ECT, 2019; ESRI, 2018

NAD 1983 StatePlane Florida North FIPS 0903 Feet





- LEGEND**
- Project Boundary
  - Mile Post
  - Soils




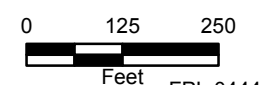
**FIGURE 1  
SOILS MAP**

SHEET 232 of 298      COUNTY: LEON  
 SCALE: 1 in = 250 feet      FILE NAME: NFRC\_Soils\_20200731  
 DRAWN BY: unash      DATE: 9/1/2020 8:05:18 AM


Sources: USDA, 2019; FDOT, 2018, 2019; ECT, 2019; ESRI, 2018

NORTH FLORIDA RESILIENCY CONNECTION





0    125    250  
Feet

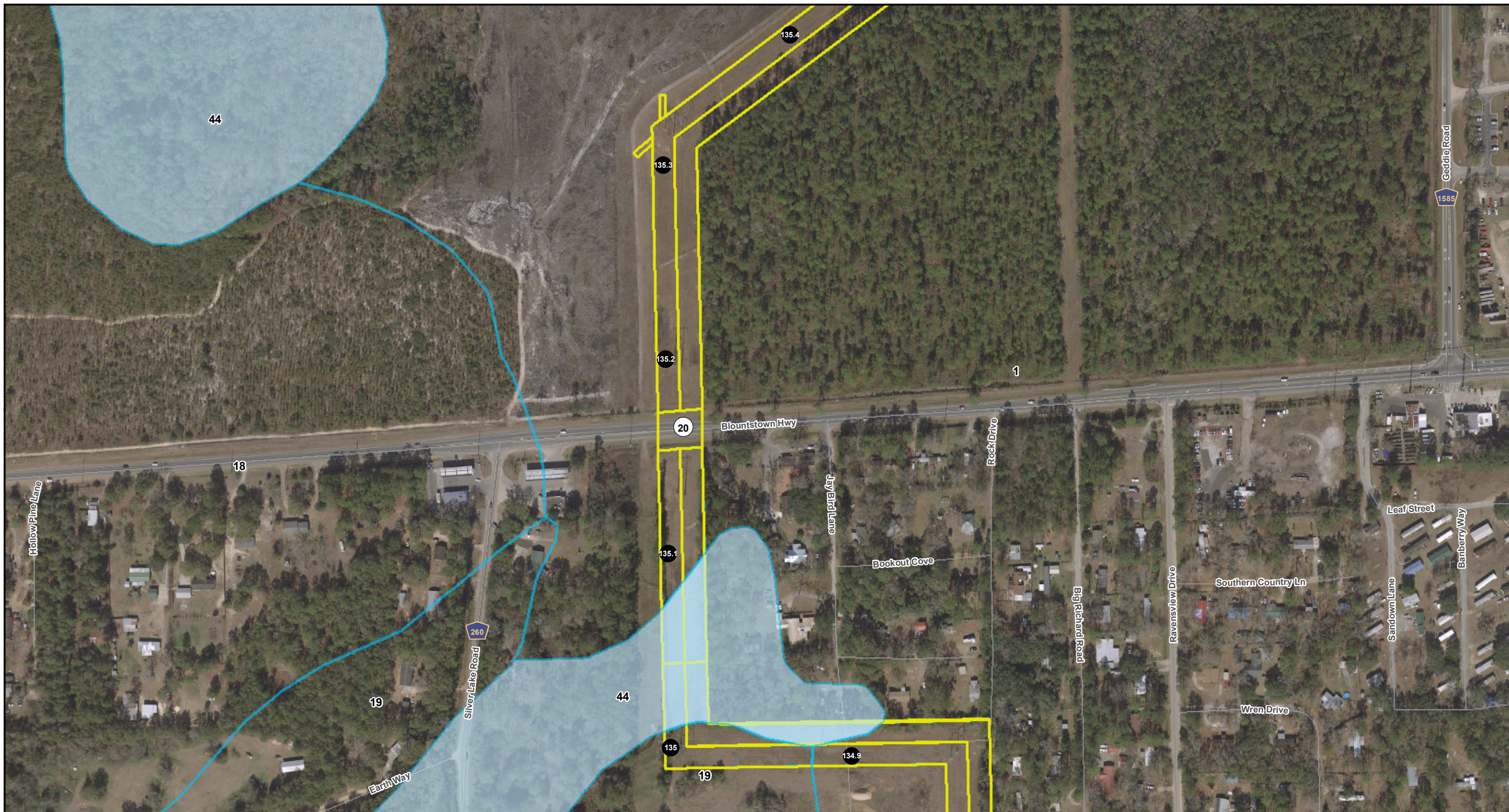


N

FPL 044442  
20210015-EI

NAD 1983 StatePlane Florida North FIPS 0903 Feet





- LEGEND**
- Project Boundary
  - Mile Post
  - Soils
  - Hydric Soils




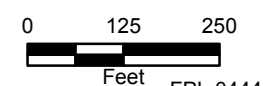
**FIGURE 1  
SOILS MAP**

SHEET 233 of 298      COUNTY: LEON  
 SCALE: 1 in = 250 feet      FILE NAME: NFRC\_Soils\_20200731  
 DRAWN BY: unash      DATE: 9/1/2020 8:05:18 AM


Sources: USDA, 2019; FDOT, 2018, 2019; ECT, 2019; ESRI, 2018

**NORTH FLORIDA RESILIENCY CONNECTION**





0    125    250  
Feet

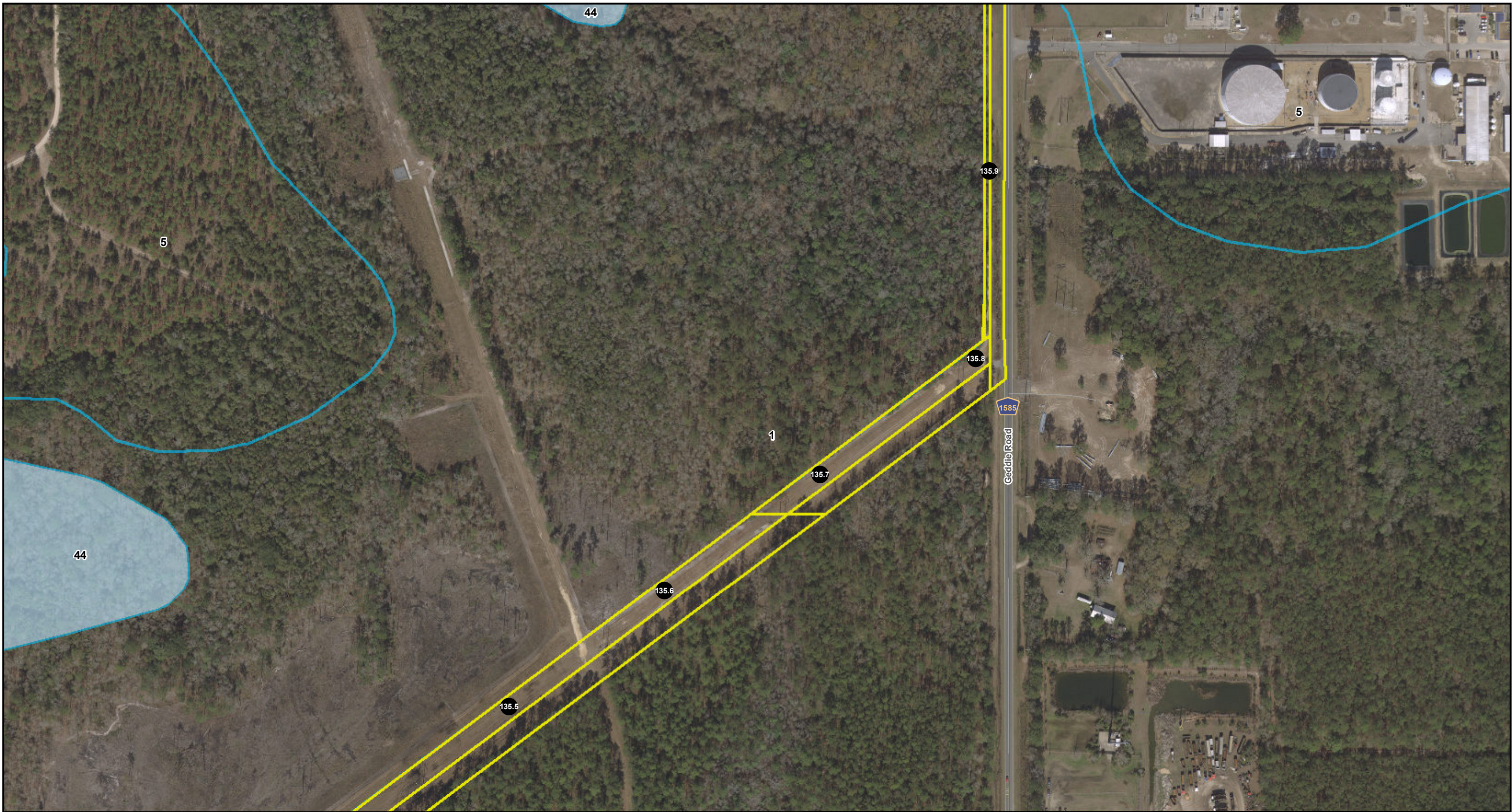


N

FPL 044443  
20210015-EI

NAD 1983 StatePlane Florida North FIPS 0903 Feet





**LEGEND**

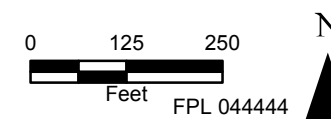
- Project Boundary
- Mile Post
- Soils



**FIGURE 1  
SOILS MAP**

SHEET 234 of 298 COUNTY: LEON  
 SCALE: 1 in = 250 feet FILE NAME: NFRC\_Soils\_20200731  
 DRAWN BY: unash DATE: 9/1/2020 8:05:18 AM

NORTH FLORIDA RESILIENCY CONNECTION

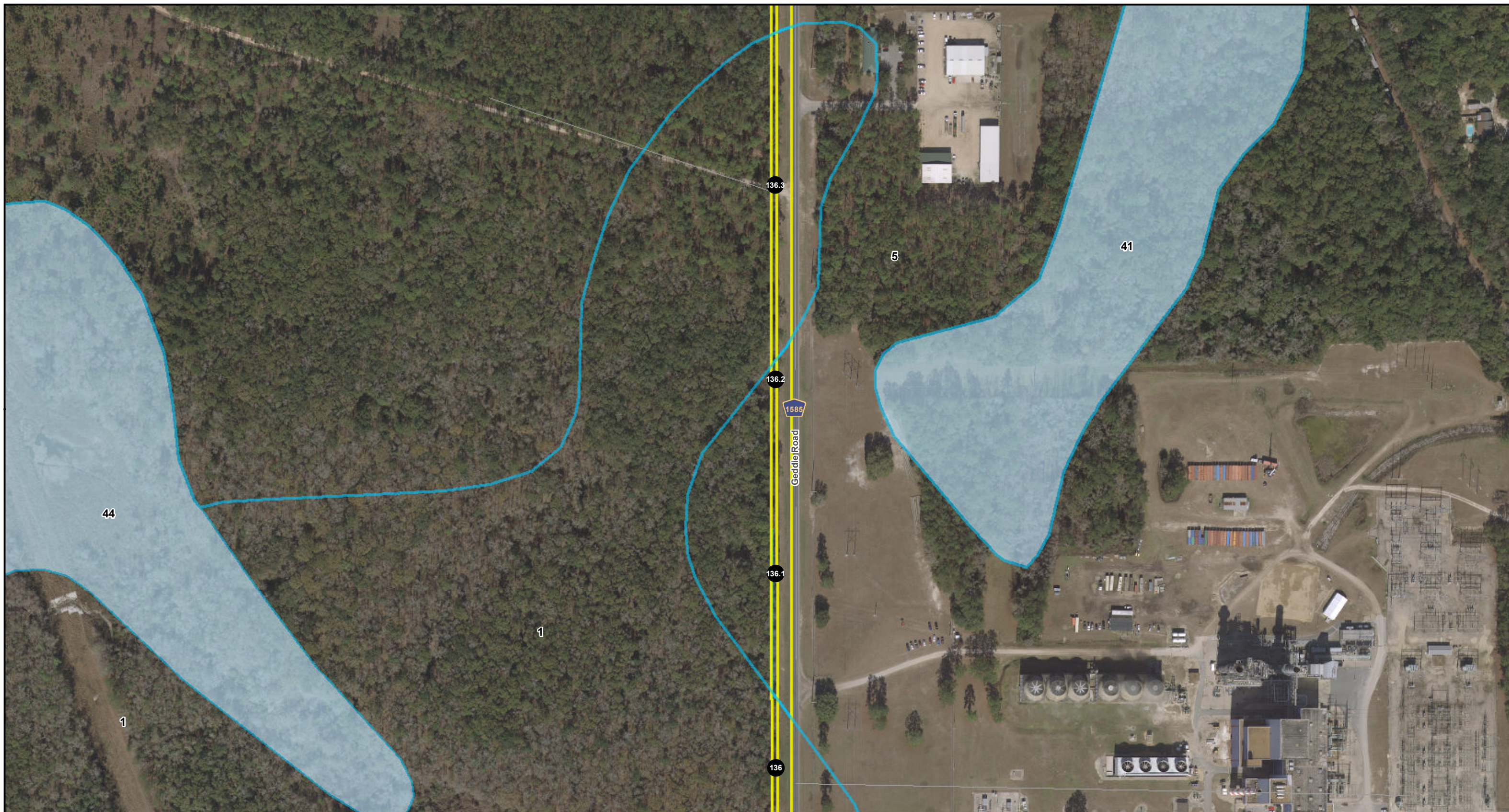





FPL 044444  
20210015-EI

Sources: USDA, 2019; FDOT, 2018, 2019; ECT, 2019; ESRI, 2018

NAD 1983 StatePlane Florida North FIPS 0903 Feet





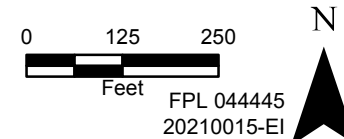
- LEGEND**
-  Project Boundary
  -  Mile Post
  -  Soils



**FIGURE 1  
SOILS MAP**

SHEET 235 of 298 COUNTY: LEON  
 SCALE: 1 in = 250 feet FILE NAME: NFRC\_Soils\_20200731  
 DRAWN BY: unash DATE: 9/1/2020 8:05:18 AM

**NORTH FLORIDA RESILIENCY CONNECTION**




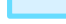


Sources: USDA, 2019; FDOT, 2018, 2019; ECT, 2019; ESRI, 2018

NAD 1983 StatePlane Florida North FIPS 0903 Feet





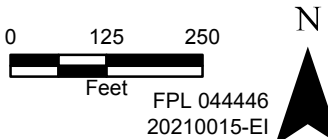
- LEGEND**
-  Project Boundary
  -  Mile Post
  -  Soils
  -  Hydric Soils



**FIGURE 1  
SOILS MAP**

SHEET 236 of 298 COUNTY: LEON  
 SCALE: 1 in = 250 feet FILE NAME: NFRC\_Soils\_20200731  
 DRAWN BY: unash DATE: 9/1/2020 8:05:18 AM

**NORTH FLORIDA RESILIENCY CONNECTION**

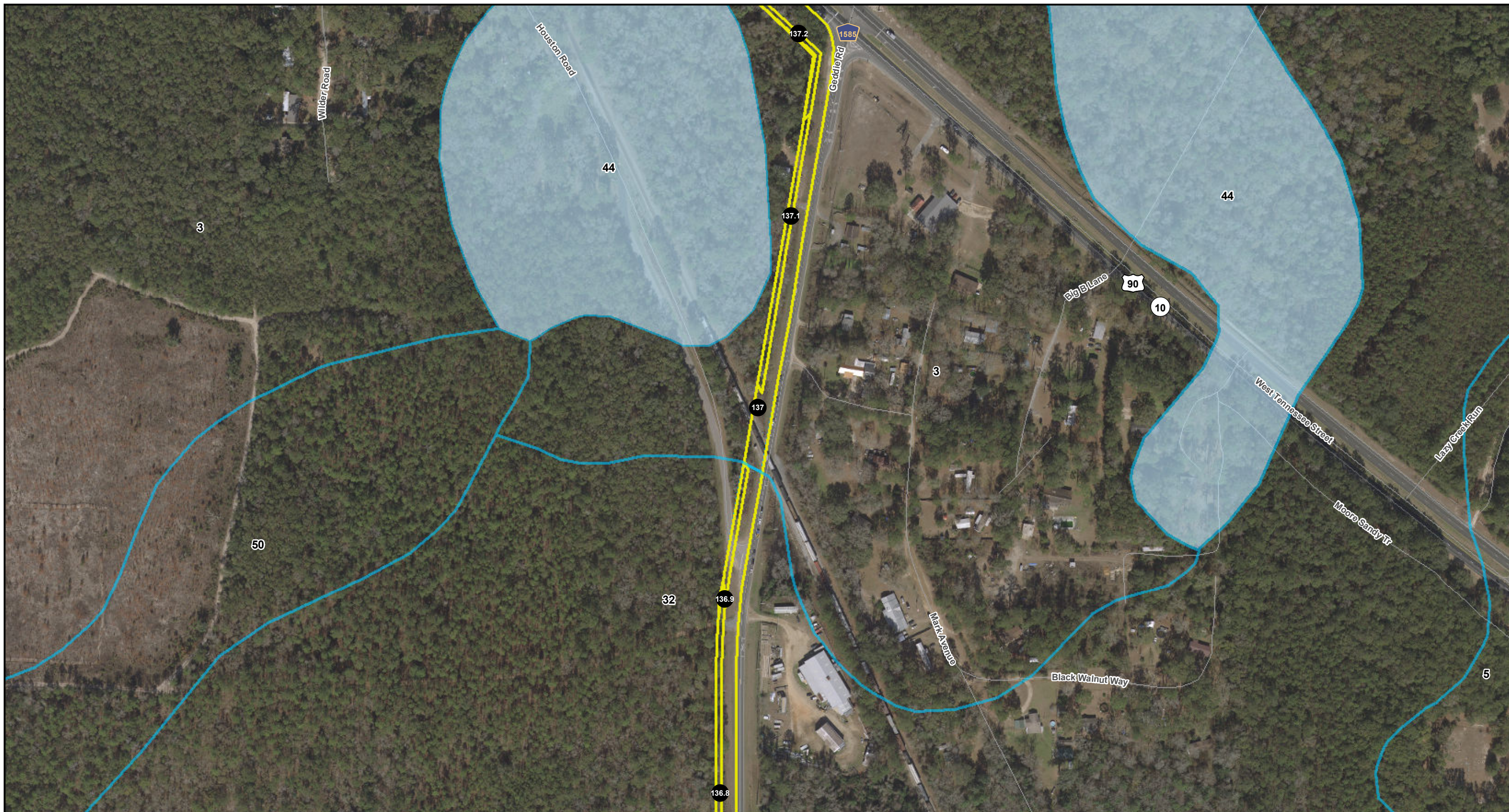


FPL 044446  
20210015-EI

Sources: USDA, 2019; FDOT, 2018, 2019; ECT, 2019; ESRI, 2018

NAD 1983 StatePlane Florida North FIPS 0903 Feet





- LEGEND**
- Project Boundary
  - Mile Post
  - Soils




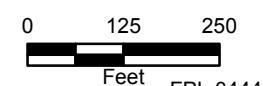
**FIGURE 1  
SOILS MAP**

SHEET 237 of 298      COUNTY: LEON  
 SCALE: 1 in = 250 feet      FILE NAME: NFRC\_Soils\_20200731  
 DRAWN BY: unash      DATE: 9/1/2020 8:05:18 AM


Sources: USDA, 2019; FDOT, 2018, 2019; ECT, 2019; ESRI, 2018

**NORTH FLORIDA RESILIENCY CONNECTION**





0    125    250  
Feet



N

FPL 044447  
20210015-EI

NAD 1983 StatePlane Florida North FIPS 0903 Feet





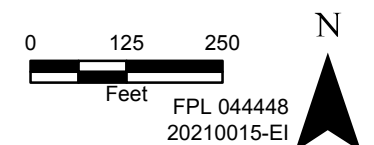
- LEGEND**
- Project Boundary
  - Mile Post
  - Soils
  - Hydric Soils



**FIGURE 1  
SOILS MAP**

SHEET 238 of 298      COUNTY: LEON  
 SCALE: 1 in = 250 feet      FILE NAME: NFRC\_Soils\_20200731  
 DRAWN BY: unash      DATE: 9/1/2020 8:05:18 AM

NORTH FLORIDA RESILIENCY CONNECTION



Sources: USDA, 2019; FDOT, 2018, 2019; ECT, 2019; ESRI, 2018

NAD 1983 StatePlane Florida North FIPS 0903 Feet





- LEGEND**
- Project Boundary
  - Mile Post
  - Soils
  - Hydric Soils



**FIGURE 1  
SOILS MAP**

SHEET 239 of 298      COUNTY: GADSDEN  
 SCALE: 1 in = 250 feet      FILE NAME: NFRC\_Soils\_20200731  
 DRAWN BY: unash      DATE: 9/1/2020 8:05:18 AM

**NORTH FLORIDA RESILIENCY CONNECTION**



Sources: USDA, 2019; FDOT, 2018, 2019; ECT, 2019; ESRI, 2018

NAD 1983 StatePlane Florida North FIPS 0903 Feet





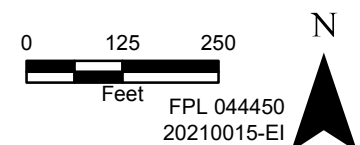
- LEGEND**
- Project Boundary
  - Mile Post
  - Soils



**FIGURE 1  
SOILS MAP**

SHEET 240 of 298 COUNTY: GADSDEN  
 SCALE: 1 in = 250 feet FILE NAME: NFRC\_Soils\_20200731  
 DRAWN BY: unash DATE: 9/1/2020 8:05:18 AM

NORTH FLORIDA RESILIENCY CONNECTION



Sources: USDA, 2019; FDOT, 2018, 2019; ECT, 2019; ESRI, 2018

NAD 1983 StatePlane Florida North FIPS 0903 Feet