



Dean, Mead, Egerton, Bloodworth, Capouano & Bozarth, P.A.
420 South Orange Avenue, Suite 700
P.O. Box 2346
Orlando, FL 32801

(407) 841-1200
(407) 423-1831 Fax
www.deanmead.com

Attorneys and Counselors at Law
Orlando
Fort Pierce
Naples
Viera/Melbourne
Vero Beach

MARTIN FRIEDMAN
407-310-2077
mfriedman@deanmead.com

September 8, 2025
via efilng

Adam Teitzman, Commission Clerk
Office of Commission Clerk
Florida Public Service Commission
2540 Shumard Oak Blvd.
Tallahassee, FL 32399-0850

Re: Docket No. 20250084-SU – Application for staff-assisted rate case in Orange County by Gulfstream Utility LLC

Dear Mr. Teitzman:

On behalf of Gulfstream Utility LLC (“Gulfstream” or “Utility”) this letter is the response to Staff’s Second Data Request dated August 25, 2025

1. For each month of the test year, please provide the water gallons sold and wastewater gallons billed to customers who have their wastewater treated by the Utility.

RESPONSE: This information will be filed as soon as possible as a supplemental response to this data request.

2. For each month of the test year, please provide the water gallons sold and wastewater gallons billed to customers who have their wastewater treated by the County.

RESPONSE: This information will be filed as soon as possible as a supplemental response to this data request.

3. Please provide a detailed system map as required by Rule 25-30.035(14), Florida Administrative Code.

RESPONSE: At this time, a detailed system map as required under Florida Administrative Code Rule 25-30.035(14) is not available. The utility does not currently possess historical

September 8, 2025

Page 2

documentation or engineering drawings that would satisfy the mapping requirements outlined in the rule. Many of the original system installations were completed prior to current regulatory standards, and as a result, records were not created, retained, or transferred in a format that meets the level of detail required. The maps previously provided are the only system maps the utility has.

4. Are any of the collection lines or lift stations located within Gulfstream's service territory owned by Orange County? If so, please identify the location.

*RESPONSE: Lift stations that are owned by the county are lift stations 1, 2 and 4. Gulf Stream Harbor is responsible for the maintenance of all lift stations including the three owned by the County. Please see the attached document: **Gulf Stream Harbor Lift station locations**.*

5. As is Commission practice, at least three bids should be provided for each requested pro forma project. As such, please provide any additional bids for each pro forma project listed below. If three bids cannot be provided, please explain in detail why.

- a. Discharge pipe repair on No.1 pump and float replacement.

RESPONSE: Due to the urgent nature of the repair, there was not sufficient time to solicit and evaluate three competitive bids. The work required immediate action in order to protect the property and ensure the safety and well-being of customers. For this reason, the Utility selected a trusted, qualified vendor with proven experience in handling similar situations and the ability to respond without delay. While the Utility's standard practice is to obtain multiple bids, in this case the emergency circumstances necessitated a direct selection in order to prevent further damage, minimize disruption, and address the issue as quickly as possible.

- b. Trolley Cable System, Pull Clean Diffusers, Welding Digester, and Trolley Wheel replacement.

RESPONSE: In this instance, three competitive bids were not obtained due to the exigent nature of the repair. The situation required immediate action to prevent further property damage and to ensure the continued safety and well-being of customers. The timeframe necessary to solicit, receive, and review multiple bids would have introduced unacceptable delays and increased risk. Accordingly, a preferred vendor was selected based on their proven qualifications, reliability, and ability to mobilize resources without delay. While it is the Utility's standard policy to obtain a minimum of three bids for non-emergency work, this exception was made under emergency conditions to protect both the property and the community. Documentation of this decision has been retained to support the necessity of the expedited procurement.

- c. Installation of LED lights under soffits.

RESPONSE: Three competitive bids were not obtained for this repair due to the need for an expedited timeline. The situation required work to be completed quickly to avoid further risk to the

September 8, 2025
Page 3

property and customers. Given the urgency, the Utility engaged a preferred vendor with a proven track record, established relationship, and demonstrated ability to respond immediately. While the Utility's standard practice is to obtain multiple bids, in this case timeliness and reliability were prioritized to ensure the repair was completed without delay.

d. Blowers PM and Starter for Blower #1.

RESPONSE: Due to the urgent nature of the repair, there was not sufficient time to solicit and evaluate three competitive bids. The work required immediate action in order to protect the property and ensure the safety and well-being of residents. For this reason, we selected a trusted, qualified vendor with proven experience in handling similar situations and the capacity to respond without delay. While it is the Utility's standard practice to obtain multiple bids, in this case the emergency circumstances necessitated a direct selection in order to prevent further damage, minimize disruption, and address the issue as quickly as possible.

Should you or Staff have any questions regarding this response please do not hesitate to contact me.

Very truly yours,



/s/ Martin S. Friedman
Martin Friedman

MSF:

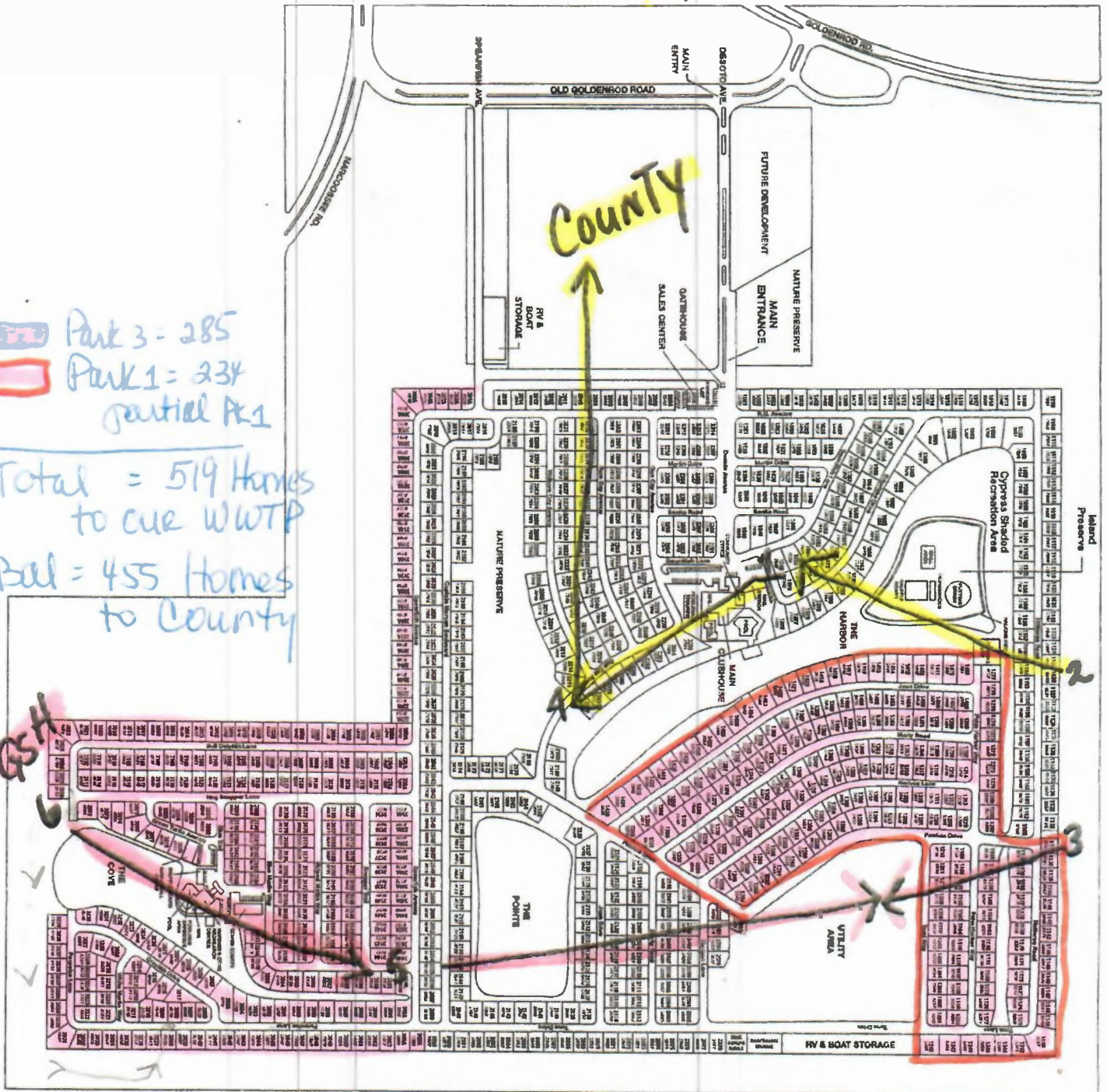
Cc: Sebastian Olivieri (via email)

5/29/2020
GSH

Lift Stations
3 County / 3 GSH

 Park 3 = 285
 Park 1 = 234
partial Park 1

Total = 519 Homes
to our WWTP
Bal = 455 Homes
to County



Note: We maintain ALL!