



Stephanie A. Cuello
SENIOR COUNSEL

April 14, 2026

VIA ELECTRONIC FILING

Adam J. Teitzman, Commission Clerk
Florida Public Service Commission
2540 Shumard Oak Boulevard
Tallahassee, Florida 32399-0850

Re: *Petition by Duke Energy Florida, LLC, to Approve Transaction with Accelerated Decommissioning Partners, LLC, for Accelerated Decommissioning Services at the CR3 Facility, etc.*; Dkt. No. 20190140-EI

Dear Mr. Teitzman:

Enclosed for filing on behalf of Duke Energy Florida, LLC ("DEF") in the above-referenced docket, please find the Materials for Annual Meeting received from Accelerated Decommissioning Partners ("ADP"). The information is responsive to items identified in the DSA [Decommission Services Agreement], Attachment 9, Section 6.12.1.

Thank you for your assistance in this matter. Please feel free to call me at (850) 521-1425 should you have any questions concerning this filing.

Respectfully,

/s/ Stephanie A. Cuello

Stephanie A. Cuello

SAC/clg
Enclosure

CERTIFICATE OF SERVICE

Docket No. 20190140-EI

I HEREBY CERTIFY that a true and correct copy of the foregoing has been furnished via electronic mail to the following this 14th day of April, 2026.

/s/ Stephanie A. Cuello

Attorney

Suzanne Brownless
Florida Public Service Commission
2540 Shumard Oak Blvd.
Tallahassee, FL 32399-0850
sbrownle@psc.state.fl.us

Jon C. Moyle, Jr. / Karen A. Putnal
Moyle Law Firm, P.A.
118 North Gadsden Street
Tallahassee, FL 32301
jmoyle@moylelaw.com
kputnal@moylelaw.com
mqualls@moylelaw.com

Charles J. Rehwinkel
Office of Public Counsel
c/o The Florida Legislature
111 West Madison Street, Room 812
Tallahassee, FL 32399
rehwinkel.charles@leg.state.fl.us

James W. Brew / Laura Wynn Baker
Stone Mattheis Xenopoulos & Brew, PC
1025 Thomas Jefferson St., N.W.
Suite 800 West
Washington, DC 20007-5201
jbrew@smxblaw.com
lwb@smxblaw.com



Billy E. Reid, Decommissioning Program Manager

c.865.384.6789

BReid@NorthStar.com

ADP26-0006

March 31, 2026

Gene Flavors (via electronic mail)
DEF General Manager
Site Administration Building
Crystal River Energy Complex (CREC)

Subject: Materials for Annual Meeting

Dear Mr. Flavors,

In accordance with the Decommissioning Services Agreement (DSA) section 6.12.1 and Attachment 9, attached you will find the materials prepared by ADP CR3, LLC (ADP) for the upcoming Annual meeting scheduled for April 22, 2026.

Should you have any questions or comments, contact me at your convenience at either bereid@northstar.com or 865-384-6789.

Sincerely,

A handwritten signature in blue ink that reads "Billy E. Reid".

Billy E. Reid
Decommissioning Program Manager

Cc: Nelson Langub (ADP / NS)
Luke Self (ADP/NS)
David Pearson (ADP/NS)
James Seals (ADP / Orano)



Decommissioning 2025 Annual Report

Contents

1.0	EXECUTIVE SUMMARY	3
2.0	SUMMARY OF REGULATORY EVENTS AND REPORTS	3
3.0	PAY ITEM DISPUTE SUMMARY	4
4.0	ADP CR3 NON-COMPLIANCE ITEMS.....	4
5.0	CONCERNS NEEDING MANAGEMENT ATTENTION	4
6.0	SUBMITTED AND PENDING REGULATORY SUBMITTALS.....	4
7.0	COMPLETED AND NEAR-TERM SCHEDULE MILESTONES	8
8.0	PROJECT SCHEDULE PERFORMANCE AND FORECAST ASSESSMENT	12
9.0	PAY ITEM SCHEDULE PERFORMANCE AND FORECAST ASSESSMENT.....	12

1.0 EXECUTIVE SUMMARY

This is the ADP CR3 annual report on the decommissioning of the Crystal River Unit 3 nuclear plant in accordance with the requirements of the First Amendment to the Decommissioning Services Agreement (DSA), Attachment 9, *Reporting and Notification Requirements*, reflecting performance for year ending December 31, 2025.

Safety and Environmental Performance

- ADP Total Hours 2025 – 247,968MH, ADP Project to Date – 1,685,601MH
- First Aid – 2, OSHA Recordable – 0, Lost Time Cases – 0
 - 04/02/2025 Employee was performing a survey on the Station Drain Tank when the embankment gave way causing him to fall against a fence post tab, resulting in a minor abrasion to his right inner forearm.
 - 12/17/2025 Employee was performing a walkdown of the 95' Auxiliary Building. As he was stepping out of a trench approximately 10" deep, he felt a "pop" in his right calf.
- ALARA Actual exposure to date for 2025 = 1950 mrem vs budget 2080 mrem
- Personnel Contamination 2025 = No PCEs
- No NRC violations for 2025

This year commenced with the continued progress on the interior building demolition within the Reactor Building and continued decon work within the Auxiliary Building. BWST decon started at the end of Q1 and demolition of this tank was completed in Q2. Completion of this structure allowed for the demolition of the remaining Auxiliary Building structures in the Seawater Room and Decay Heat Vault. Seawater Room demolition was completed in Q3 and the start of Decay Heat Vault roof demolition. Completion of these structures allows for the completion of decontamination activities in the Auxiliary Building. Decon of the Auxiliary Building below grade structure to Final Status Survey standards in the Phase I area was completed in Q4 in preparation for ORISE in early 2026. Receiving Warehouse demolition was completed in 25Q4 as part of ongoing site restoration efforts. Reactor building systems removal is ongoing with only HVAC ducting, Building spray and the RB sump remaining. Decon of the interior of the RB to FSS standards is ongoing and scheduled to complete in April 2026. No spent nuclear fuel related violations, environmental non-compliance, or significant industrial safety events occurred or were reported.

2.0 SUMMARY OF REGULATORY EVENTS AND REPORTS

1. Reportable events to Governmental Authority (e.g., NRC, OSHA, FDEP, EPA):

NONE

2. Receipt of any correspondence from any Governmental Authority of violation or finding:
None.
3. Any breach of debt covenants, default acceleration, insolvency, reorganization, bankruptcy or liquidation of NorthStar Group Services, Inc., and/or proposed organizational changes in equity ownership of NorthStar Group Holdings, LLC or ORANO SA:
NONE
4. Events that require Duke Energy Florida (DEF) to make a report to ANI:
NONE
5. Events that require Duke Energy Florida (DEF) to make a report to NEIL:
NONE

3.0 PAY ITEM DISPUTE SUMMARY

There are no pay items in dispute. DEF has communicated that the quality of the documentation of Pay Item completion has been very good, with progress of all Pay Items being validated.

4.0 ADP CR3 NON-COMPLIANCE ITEMS

NONE

5.0 CONCERNS NEEDING MANAGEMENT ATTENTION

NONE

6.0 SUBMITTED AND PENDING REGULATORY SUBMITTALS

ADP CR3 Decommissioning 2025 Annual Report

NRC

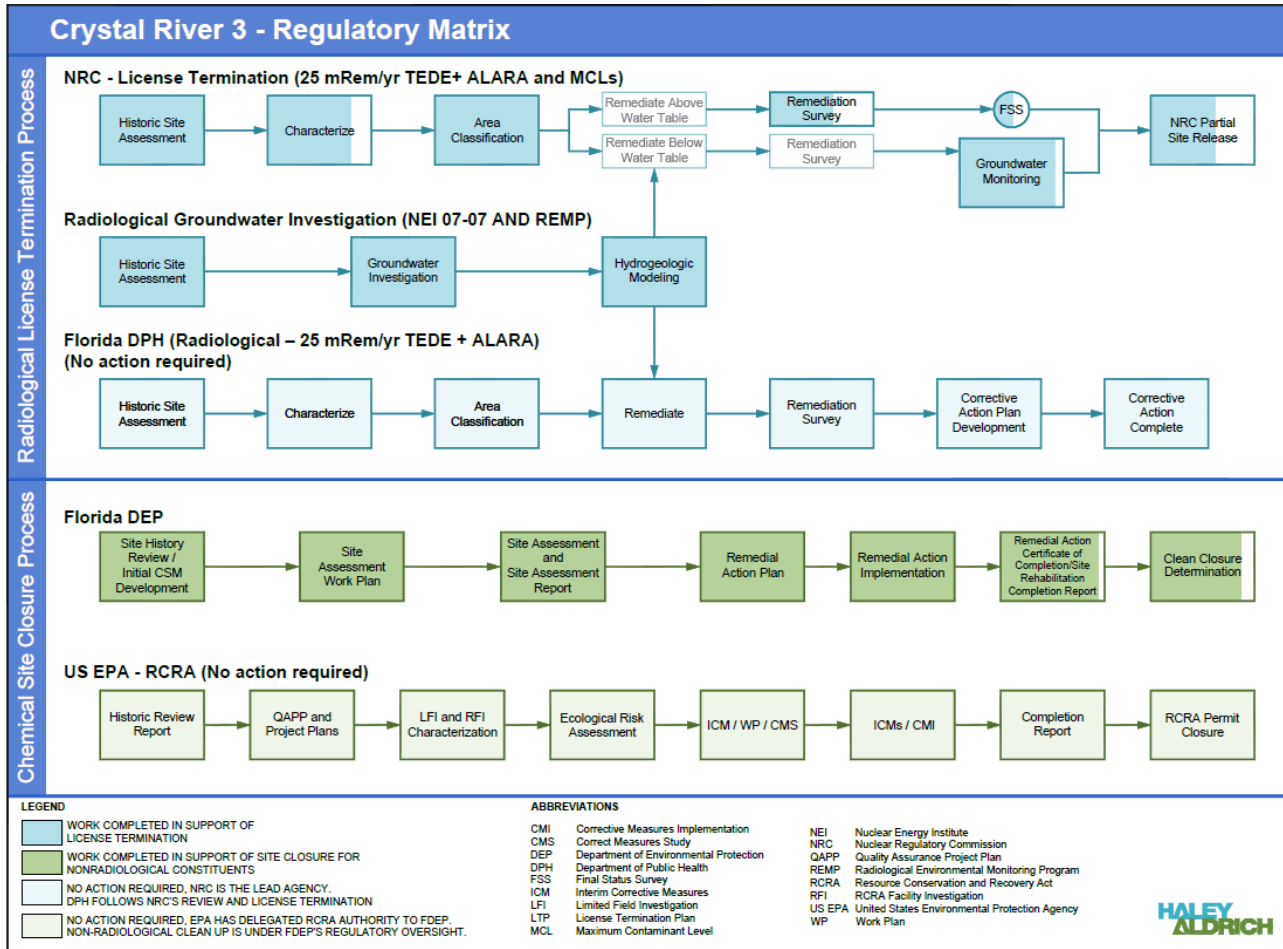
NUMBER	DATE	FROM ORG	FROM PERSON	SUBJECT	NRC ACCESSION #	Notes
3F0125-01	1/15/2025	CR3	Reid	Late Received Radiological Shipment	ML25015A098	Submitted to records
3F0125-02	1/23/2025	CR3	Reid	Proof of Financial Protection	ML25023A118	Submitted to records
3F0225-01	2/10/2025	CR3	Reid	Phase 2 Partial Site Release / License Amendment Request	ML25041A184 (Package ML)	Submitted to records ML25041A178 thru ML25041A191
3F0325-01	3/28/2025	CR3	State	CR3 Annual Decommissioning and Irradiated Fuel Management Financial Status Report for 2024	ML25087A183	Submitted to records
3F0325-02	3/6/2025	CR3	Reid	Crystal River 3 – Onsite Property Insurance Coverage	ML25065A066	Submitted to records
3F0425-01	4/15/2025	CR3	Reid	Late Received Radiological Shipment	ML25105A136	Submitted to records
3F0425-02	4/17/2025	CR3	Reid	Crystal River 3 - 2024 Annual Radioactive Effluent Release Report (ARERR)	ML25107A158	Submitted to records
3F0425-03	4/23/2025	CR3	Van Sicklen	Crystal River 3 – 2024 Individual Monitoring NRC Form 5 Report	ML25113A088	Submitted to records
3F0525-01	5/5/2025	CR3	Van Sicklen	Crystal River 3 - 2024 Annual Radioactive Environmental Operating Report (AREOR)	ML25127A372	Submitted to records
3F0525-02	5/29/2025	CR3	Adix	Annual Corporate Financial Report (Att1 and Att2/Confidential)	ML25148A304 ML25148A005 (Confidential)	Submitted to records
3F0625-01	6/19/2025	CR3	Reid	Phase 2 Partial Site Release Revision / License Amendment Request	ML25170A017 (Package) ML25170A018 (Cover Page), ML25170A019 (Att1), ML25170A020 (Att2), ML25170A021 (Att3), ML25170A023 (Att4), ML25170A024 (Att5), ML25170A026 (Att6), ML25170A027 (Att7), ML25170A028 (Att8), ML25170A029 (Att9), ML25170A030 (Att10), ML25170A031 (Att11), ML25170A032 (Att12), ML25170A033 (Att13).	Submitted to records
3F0825-01	8/4/2025	CR3	Reid	Late Received Radiological Shipment	ML25216A119	Submitted to records
3F0925-01	N/A	CR3	N/A	Not Used		
3F0925-02	9/30/2025	CR3	Van Sicklen	ENS Phone Change	ML25274A118	Submitted to records
3F1025-01	10/15/2025	CR3	Reid	LTP/LAR	ML25288A001 (Package) ML25288A002 (Cover), ML25288A003 (Enc1), ML25288A004 (Enc2), ML25288A005 (Enc3), ML25288A006 (Enc4), ML25288A007 (Enc5), ML25288A008 (Enc6), ML25288A014 (Enc7), ML25288A015 (Enc8), ML25288A016 (Enc9), ML25288A017 (Enc10), ML25288A018 (Enc11), ML25288A019 (Enc 12), ML25288A020 (Enc13), ML25288A021 (Enc14), ML25288A022 (Enc15), ML25288A023 (Enc16), ML25288A024 (Enc17), ML25288A025 (Enc18), and ML25288A026 (Enc19)	Submitted to records
3F1225-01	12/10/2025	CR3	Van Sicklen	ISFSI Performance Bond	ML25345A122	Submitted to records
3F1225-02	12/11/2025	CR3	Reid	LTP Revision 4	ML25345A212 (Package) ML25345A213 (Cover), ML25345A215 (LTP), ML25345A216 (Enc13), ML25345A217 (Enc14)	

ADP CR3 Decommissioning 2025 Annual Report

2025 Crystal River 3 – NRC Submittals		
Submittal	Submittal to be Signed	Comments
Proof of Financial Protection, Financial Liability Policy Renewal (ANI)	January 31, 2025	10 CFR 140.15, 140.11(a)(4) Exempted, 10 CFR 140.17(b)
Annual Decommissioning and Irradiated Fuel Management Financial Status Report	March 31, 2025	10 CFR 50.82(a)(8)(v), (vi) and (vii) and 10 CFR 50.75(f)(1) and (2)
Copy of Material Balance Report and Physical Inventory Listing Report (12-month frequency requirement from last submittal)	March 31, 2025	10 CFR 74.13(a) and 10 CFR 74.15, 10 CFR 70.55, 10 CFR 72.76, 10 CFR 72.78, (Within 60 days following the start of the annual physical inventory of special nuclear material and/or source material)
Onsite Property Insurance Coverage (NEIL)	April 1, 2025	10 CFR 50.54(w)(3)
Radiation Exposure Report To Employees (RPCM initiates)	April 30, 2025	10 CFR 19.13 and 10 CFR 20.2206(b)
Annual Radioactive Effluent Release Report and a copy of the ODCM	May 1, 2025	Submit report per 10 CFR 50.36a(a)(2) and ODCM; CP-500
Annual Radioactive Radiological Environmental Operating Report	May 15, 2025	10 CFR 50 Appendix I; Submit report per ODCM; CP-500
Annual Copy of Corporate Financial Report See 10 CFR 140.15 (a)	Annually (within 30 days of issuance of annual report)	10 CFR 50.71(b) 10 CFR 72.80(b)
Performance Bond - ISFSI Management Costs	December 31, 2025	Facility Operating License Condition 2.C(19) - Renew annually until settlement agreement with DOE is reached
Crystal River Unit 3 – Reporting Related to the National Pollutant Discharge Elimination System (NPDES) Permit ID# FL0A00004-001-IW1S	As needed	CP-500
Crystal River 3 – Report of Investigation Pursuant to 10 CFR 20, Appendix G.	As needed	10 CFR 20, Appendix G, as exempted

Submittals	NRC Accession/ TAC Number	NRC Approval Requested	Next Expected Action	Comments
Crystal River 3 – Report of Investigation Pursuant to 10 CFR 20, Appendix G	ML25015A098 ML25105A136 ML25216A119			
Partial Site Release 2	ML25041A177 (Package ML)			
Response to Partial Site Release 2 Regulatory Audit Questions	ML25170A017			
Emergency Notification System Change	ML25274A118			
License Termination Plan	ML25288A001 ML25345A212			

Environmental



7.0 COMPLETED AND NEAR-TERM SCHEDULE MILESTONES

	PAY ITEM/MILESTONE	PLANNED COMPLETE	STATUS
3.1.1.1	Planning & Site Preparation Utilities Reactivation		100% Complete
3.1.1.2	Planning & Site Preparation Containment Access, Waste Handling Areas		100% Complete
3.1.2	Planning & Site Preparation Site Characterization		100% Complete
3.1.3.1	Planning & Site Preparation LCR and RV/RVI Planning and Engineering General transition Planning/Engineering		100% Complete
3.1.3.2	Planning & Site Preparation LCR and RV/RVI Planning and Engineering Site/Plant infrastructure Planning and Engineering		100% Complete
3.1.3.3	Planning & Site Preparation LCR and RV/RVI Planning and Engineering RVI Planning and Engineering		100 % Complete
3.1.3.4	Planning & Site Preparation LCR and RV/RVI Planning and Engineering RV Planning and Engineering		100% Complete
3.1.3.5	Planning & Site Preparation LCR and RV/RVI Planning and Engineering LCR Planning and Engineering		100% Complete
3.1.4.1	Planning & Site Preparation Balance of Plant D&D Planning Temporary Utilities, Site Preparation Planning		100% Complete
3.1.4.2	Planning & Site Preparation Balance of Plant D&D Planning Turbine, Condenser, Steam Generator Removal Planning		100% Complete
3.1.4.3	Planning & Site Preparation Balance of Plant D&D Planning Systems Removal and Decon Work Planning		100% Complete
3.1.4.4	Planning & Site Preparation Balance of Plant D&D Planning Demolition Work Planning		100% Complete
4.A.1.1	Large Component Removal Reactor Internals Segmentation Reactor Internals Mobilization, Setup & Commissioning		100% Complete

ADP CR3 Decommissioning 2025 Annual Report

	PAY ITEM/MILESTONE	PLANNED COMPLETE	STATUS
4.A.1.2	Large Component Removal Reactor Internals Segmentation Reactor Internals Segmentation (Plenum Assembly)		100% Complete
4.A.1.3	Large Component Removal Reactor Internals Segmentation Reactor Internals Segmentation (Core Support Assembly/Remaining)		100% Complete
4.A.1.4	Large Component Removal Reactor Internals Segmentation Reactor Internals Waste Packaging, Transportation and Disposal		100% Complete
4.A.2.1	Large Component Removal Reactor Vessel Segmentation Reactor Vessel Mobilization		100% Complete
4.A.2.2	Large Component Removal Reactor Vessel Segmentation Reactor Vessel Segmentation		100% Complete
4.A.3	Large Component Removal Reactor Vessel Segmentation Reactor CRDMs, ICIs, Services Structure		100% Complete
4.A.4.1	Large Component Removal Reactor Coolant System Reactor Coolant Piping		100% Complete
4.A.4.2	Large Component Removal Reactor Coolant System Reactor Coolant System Pumps and Motors		100% Complete
4.A.5	Large Component Removal Reactor Coolant System Pressurizer and Relief Tank		100% Complete
4.A.6.5	Large Component Removal Steam Generators Steam Generator Package, Transportation and Disposal		100% Complete
4.A.7.1	Large Component Removal Main Turbine/Generator/Condensers Turbine and Generator Removal		100% Complete
4.A.7.1	Large Component Removal Condenser Removal		100% Complete
4.B.1.1	Site Decontamination Remove Plant Systems Reactor Building	1/31/2026	94% Complete
4.B.1.2	Site Decontamination Remove Plant Systems Auxiliary Building elev 95'		100% Complete
4.B.1.3	Site Decontamination Remove Plant Systems Auxiliary Building elev 119'		100% Complete

ADP CR3 Decommissioning 2025 Annual Report

	PAY ITEM/MILESTONE	PLANNED COMPLETE	STATUS
4.B.1.4	Site Decontamination Remove Plant Systems Intermediate Building		100% Complete
4.B.1.5	Site Decontamination Remove Plant Systems Turbine Building		100% Complete
4.B.2.1-3	Decontaminate Reactor Building	04/30/2026	70% Complete
4.B.2.4	Decontaminate Auxiliary Building		100% Complete
4.B.2.5	Decontaminate Intermediate Building		100% Complete
4.B.4	Site Decontamination Decontaminate Buildings License Termination Planning		100% Complete
4.B.5.1	Site Decontamination Decontaminate Buildings West Settling Pond Remediation		100% Complete
4.B.5.3	Site Decontamination Decontaminate Buildings Transfer Canal Sand Removal		100% Complete
4.F.1.1	License Termination License Termination Survey	12/31/2026	41% Complete
5.1.1	Site Restoration Demolish Turbine Building		100% Complete
5.1.2	Site Restoration Demolish Miscellaneous Site Structures Emergency Feed Water Building		100% Complete
5.1.2	Site Restoration Demolish Miscellaneous Site Structures Diesel Generator Building		100% Complete
5.1.2	Site Restoration Demolish Miscellaneous Site Structures Alternate AC Diesel Generator Bldg Demo		100% Complete
5.1.2	Site Restoration Demolish Miscellaneous Site Structures Fire Pump House Building		100% Complete
5.1.2	Site Restoration Demolish Miscellaneous Site Structures RB Maintenance Bldg Demo		100% Complete
5.1.2	Site Restoration Demolish Miscellaneous Site Structures RX Vessel Closure Head Storage Bldg Demo		100% Complete
5.1.2	Site Restoration Demolish Miscellaneous Site Structures Hot and Cold Shop Bldg Demo		100% Complete
5.1.2	Site Restoration Demolish Miscellaneous Site Structures		100% Complete

	PAY ITEM/MILESTONE	PLANNED COMPLETE	STATUS
	PAB Building Demo		
5.1.2	Site Restoration Demolish Miscellaneous Site Structures A/B Warehouse Complex Removal	A – Complete B - 4/30/26	50% Complete
5.1.2	Site Restoration Demolish Miscellaneous Site Structures BWST Building Demo		100% Complete
5.1.2	Site Restoration Demolish Miscellaneous Site Structures NAB Building Demo		100% Complete
5.1.3	Site Restoration Demolish Miscellaneous Site Structures Auxiliary Building Demo		100% Complete
5.1.5	Site Restoration Demolish Miscellaneous Site Structures Intermediate Building Demo		100% Complete
5.2.1	Site Restoration Firing Range Closure		100% Complete

The following is the ISFSI focused completed items for 2025.

- Successful completion of both the Operations and Security ISFSI triennial NRC inspections (no violations or findings)
- Restoration of facilities and systems from damage received in hurricane Helene and the severe lightning strike immediately preceding the hurricane (one activity remaining for SOC restoration, all lightning strike system restorations resolved)
- Incorporated licensing basis changes to address ISFSI operations during severe weather occurrences based on final NRC guidance
- Vendor H&M visit for improved PIDS performance and training on PSCS for better site-driven solutions
- Contracted with HVAC vendor for improved reliability of support system for PSCS
- Revisions to site explosion and fire calc
- Biennial internal audit completed with no findings or deficiencies
- Security new hire training developed and implemented on site’s first non-nuclear hires since ADP CR3 license transition
- Emergency preparedness and security event response improvements and expansion of ISSS ownership
- Conversion of hospital contract to an MOU
- Conversion to Lumen Specialty Lines for emergency comms (Adoption of RIS-2000-11)
- Site dose calc update for RWC addition to pad and for support of partial site release

- Implementation of integrated work management schedule and task tracking
- Addressed loss of MRO and Background services companies without issue
- Significant rewrite of CAP series procedures and reporting procedures
- HSM maintenance items (some items remain for 2026)
- LOTO program improvements
- Significant preparations and project planning for ISFSI power reroute scheduled for 2026
- Received excellence in reporting award from the Nuclear Materials Management and Safeguards System (NMMSS) for the quality of our material transaction and inventory report
- Renewed significant portion of contracts required for ISFSI operations and regulatory compliance
- 2026 staffing plan developed to account for increased responsibilities as demolition completes

8.0 PROJECT SCHEDULE PERFORMANCE AND FORECAST ASSESSMENT

Project Schedule is tracking to an August 2027 completion date. The project has accelerated in many areas of the project to build enough float to allow for LTP and FSS review times in the schedule. Currently Critical Path remains the same going thru the Reactor Building to License Termination.

Updated Schedule and Critical Path Schedule is attached.

9.0 PAY ITEM SCHEDULE PERFORMANCE AND FORECAST ASSESSMENT

Project is currently performing within budget of the original pay item schedule. Below is the current annual forecast for the project and percent complete by period.

- Period 3 – 100% Complete
- Period 4A – 99% Complete
- Period 4B – 81% Complete
- Period 4F – 43% Complete
- Period 5 – 60% Complete

2020	\$68,523
2021	\$100,546
2022	\$97,149
2023	\$81,156
2024	\$90,324
2025	\$38,185
2026	\$49,080
2027	\$15,037
Total	\$540,000

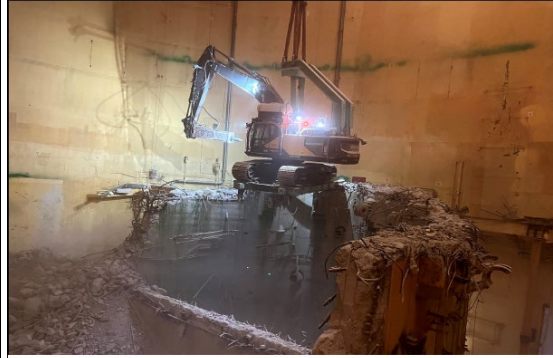
Progress Photos

Q1

Reactor Building System Removal, Decon and Interior Demo



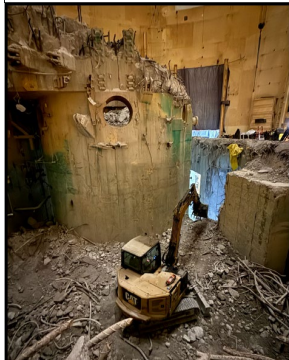
RB Phase 2 Internal Demo



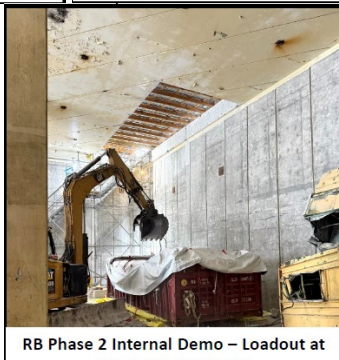
RB Phase 2 Internal Demo



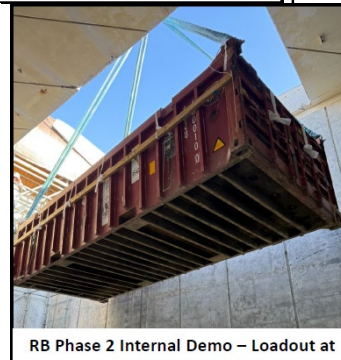
RB Phase 2 Internal Demo



RB Phase 2 Internal Demo



RB Phase 2 Internal Demo – Loadout at the Seawater Room



RB Phase 2 Internal Demo – Loadout at the Seawater Room

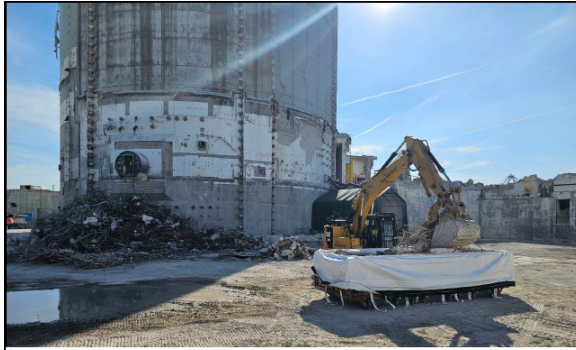


RB Phase 2 Internal Demo – Loadout at the Seawater Room



RB Phase 2 Internal Demo – Loadout

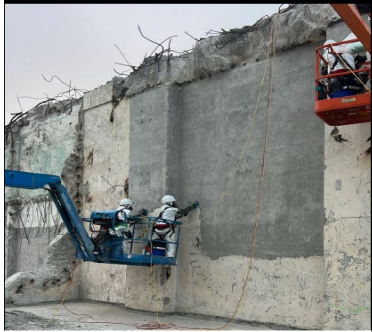
Power Block - Auxiliary, Turbine, Intermediate Building and Control Complex Decon and Demo



AB & TB – Loadout



Power Block – Decon Wall paint Removal & RP Survey



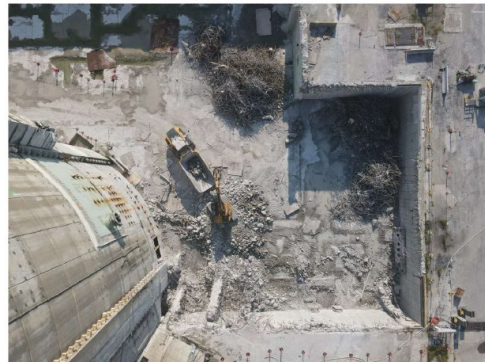
Power Block – Decon Wall paint Removal



Power Block Final Decon – Floor Epoxy Removal



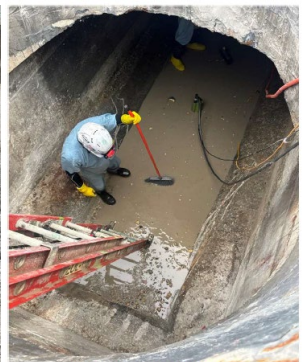
Seawater Room Roof Demo



Seawater Room Demo Complete Steel & Concrete Loadout



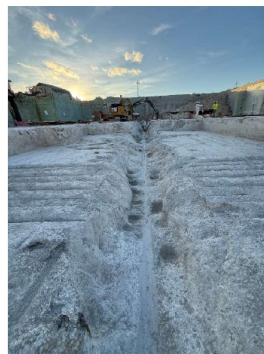
Decay Heat Vault Roof Demo



Cleaning out the Intakes



AB Decay Heat Vault Decon and Clean Out



Auxiliary Building Substructures Drain Removal and Surveys



Turbine Building Drain Removal

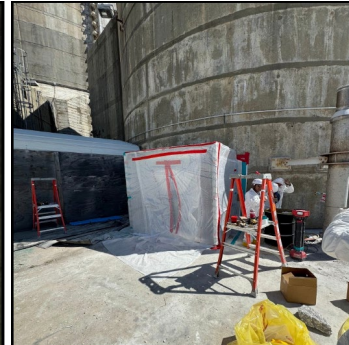
BWST Demolition



BWST- Creating a hole in preparation for RP Survey



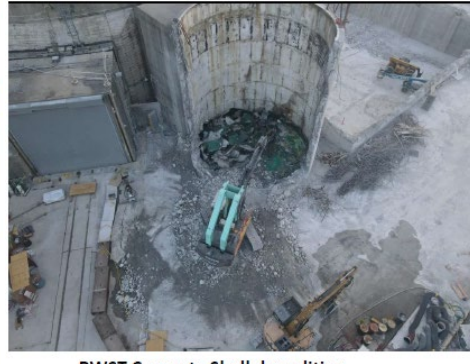
Initial Survey Inside BWST



BWST- Closed Area at the End of the Day



BWST- Concrete Removal



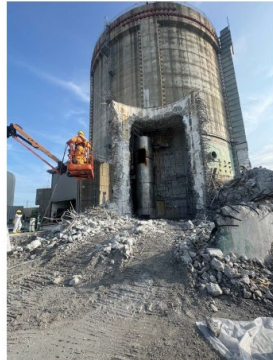
BWST Concrete Shell demolition



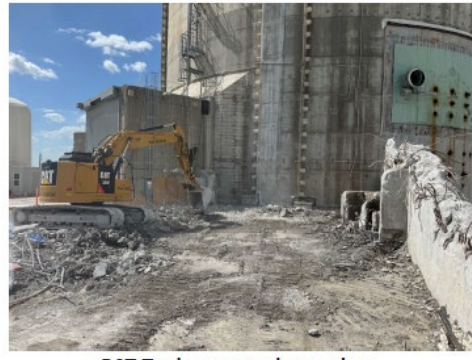
BWST- Steel Tank Demolition



Building spray tank demo

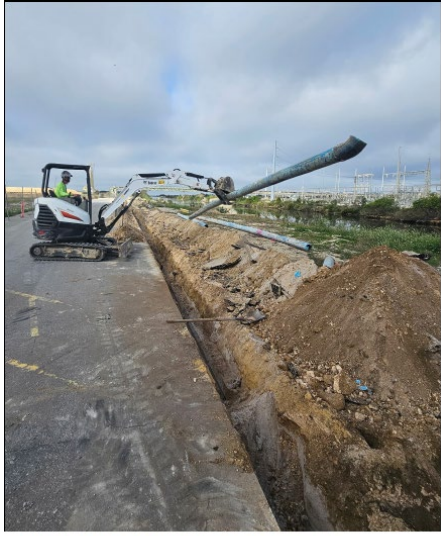


BST Tanks removal



BST Tanks removal complete

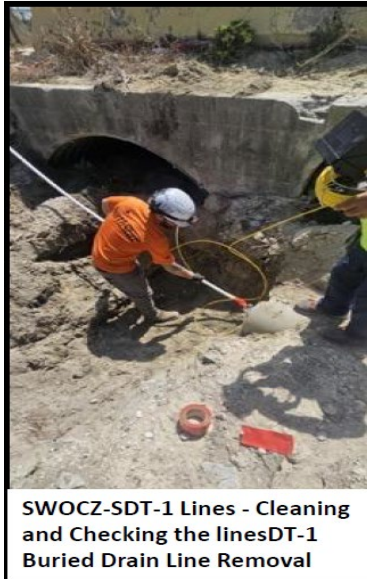
Station Drain Line Removal



SDT-1 Buried Drain Line Removal



SDT-1 Buried Drain Line Removal



SWOCZ-SDT-1 Lines - Cleaning and Checking the linesDT-1 Buried Drain Line Removal



WOCZ-SDT-1 Lines - Cleaning and Checking the lines

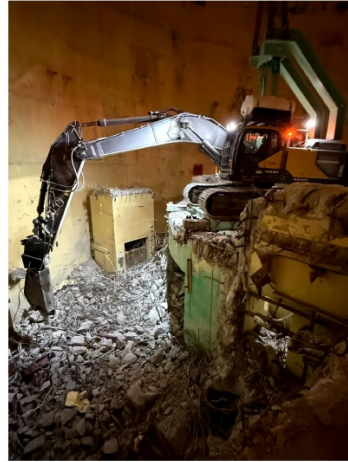
Reactor Building System Removal, Decon and Interior Demo



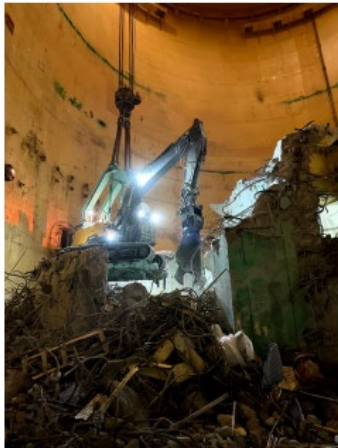
RB Phase 2 Internal Demo



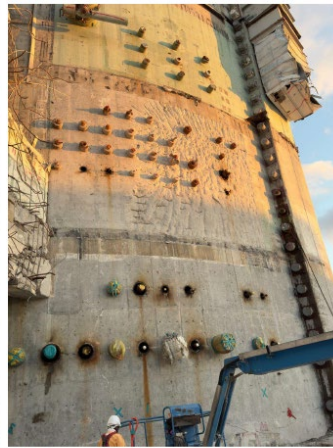
RB Phase 2 Internal Demo



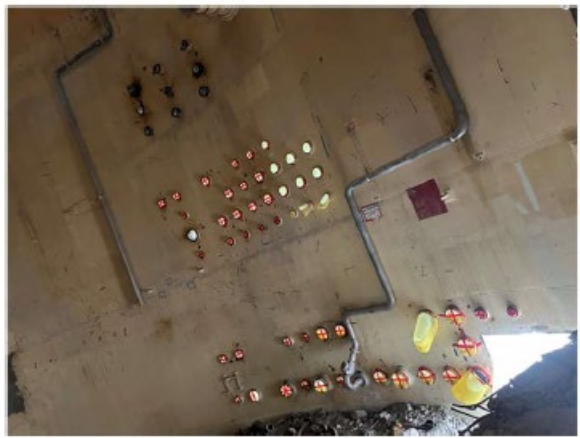
RB Phase 2 Internal Demo



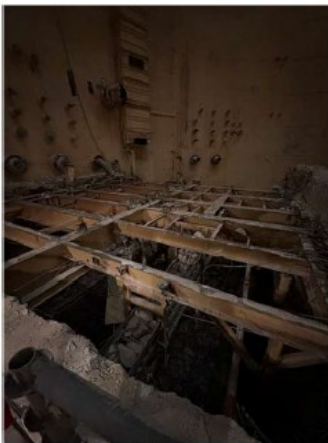
RB Phase 2 Internal Demo



RB Penetrations Removal and Abatement



RB Penetration Removal



RB 119' Floor Demo



RB Core Barrel Removal



RB Bravo D-Ring Demolition



RB Bio-Shield Segmentation

Final Status Surveys



TB North and East Walls



AB Floor Surveys



FSS Laundry and Shower Sump



CC East Wall



TB FSS Scanning



Scanning Auxiliary Building Wall

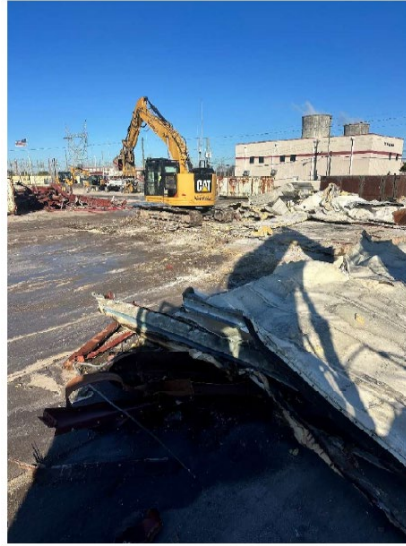


RB Exterior Wall Survey

Receiving Warehouse Demolition



Receiving Warehouse Demolition

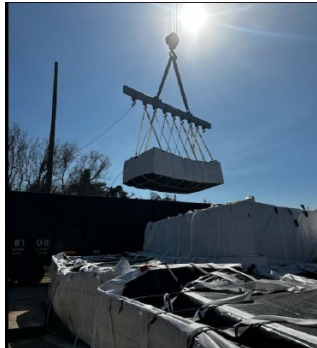


Receiving Warehouse Demolition

Site Loadout Operations



Loaded Rail Cars with Concrete Debris



Loadout Rail Cars



Loading Railcars



Waste Bag Staging



Railcar Live Loading



Loadout Rail Cars



Substructure Bag Loadout



Loadout Surveys

Activity ID	Activity Name	Original Duration	Remaining Duration	Start	Finish	2026								2027	
						Q3	Q4	Q1	Q2	Q3	Q4	Q1	Q2		
Crystal River #3 Decommissioning BL Dec 31, 2025 Schedule Update															
A2800	Complete Milestone #1 Partial License Termination	0.0d	0.0d	16-Jan-23 A	29-Jul-27*										
4 - Decommissioning															
4A - Large Component Removal															
Large Component Removal Additional Cost															
Asbestos Abatement															
4B - Site Decontamination															
Remove Plant Systems															
Reactor Building															
Decontaminate Buildings															
Reactor Building (95' Elev.)															
Reactor Building (119' Elev.)															
Reactor Building (160' Elev. and Above)															
Miscellaneous Site Structures															
License Termination Planning															
4F - License Termination															
License Termination Planning, Final Surveys, Reporting															
License Termination															
Confirmation & Verification Surveys															
Terminate License															
5 - Site Restoration															
Demolition, Backfill, Grading															
Reactor Building															

Activity ID	Activity Name	Original Duration	Remaining Duration	Start	Finish	25		2026				2027			
						Q3	Q4	Q1	Q2	Q3	Q4	Q1	Q2		
Crystal River #3 Decommissioning BL Dec 31, 2025 Schedule Update						1241.0d	411.0d	10-Aug-20 A	29-Jul-27						
A2800	Complete Milestone #1 Partial License Termination	0.0d	0.0d		29-Jul-27*										
4 - Decommissioning						1241.0d	411.0d	03-Jan-22 A	28-Jul-27						
4A - Large Component Removal						345.0d	75.0d	30-Sep-24 A	14-Apr-26						
Large Component Removal Additional Cost						345.0d	75.0d	30-Sep-24 A	14-Apr-26						
Asbestos Abatement						17.0d	17.0d	31-Dec-25	22-Jan-26						
Remove Contaminated Outdoor Piping						345.0d	75.0d	30-Sep-24 A	14-Apr-26						
4B - Site Decontamination						1025.0d	195.0d	03-Jan-22 A	29-Sep-26						
Remove Plant Systems						448.0d	63.0d	03-Jan-22 A	27-Mar-26						
Reactor Building						180.0d	63.0d	16-Jan-23 A	27-Mar-26						
Remove Plant Systems Waste P,T,&D						400.0d	63.0d	03-Jan-22 A	27-Mar-26						
Decontaminate Buildings						552.0d	62.9d	30-Oct-23 A	27-Mar-26						
Reactor Building (95' Elev.)						120.0d	62.8d	30-Oct-23 A	27-Mar-26						
Reactor Building (119' Elev.)						120.0d	43.1d	16-Sep-24 A	27-Mar-26						
Reactor Building (160' Elev. and Above)						129.0d	62.9d	05-Aug-24 A	27-Mar-26						
Miscellaneous Site Structures						100.0d	37.2d	10-Feb-25 A	20-Feb-26						
Decontaminate Buildings Waste P,T & D						685.0d	62.9d	02-Jan-23 A	27-Mar-26						
Reactor Building Waste P,T,&D						360.0d	62.3d	09-Sep-24 A	27-Mar-26						
Auxiliary, Intermediate, and Misc Building Waste P,T,&D						520.0d	23.0d	02-Jan-23 A	30-Jan-26						
License Termination Planning						153.0d	107.1d	30-Sep-25 A	29-May-26						
Decon Additional Costs						320.0d	195.0d	12-May-25 A	29-Sep-26						
Underground Services Excavation						120.0d	120.0d	15-Apr-26	29-Sep-26						
Remedial Action Surveys						25.0d	128.9d	12-May-25 A	29-Jun-26						
4F - License Termination						378.2d	348.1d	06-Jan-25 A	28-Jul-27						
License Termination Planning, Final Surveys, Reporting						378.2d	348.1d	06-Jan-25 A	28-Jul-27						
License Termination						169.0d	139.0d	06-Jan-25 A	08-Oct-26						
Confirmation & Verification Surveys						110.0d	110.0d	05-Jan-26 A	14-Dec-26						
Terminate License						162.0d	162.0d	15-Dec-26	28-Jul-27						
5 - Site Restoration						937.9d	285.9d	10-Aug-20 A	03-Feb-27						
Demolition, Backfill, Grading						937.9d	285.9d	10-Aug-20 A	03-Feb-27						
Turbine Building						130.0d	153.0d	03-Jul-23 A	31-Jul-26						
Miscellaneous Site Structures						250.0d	62.5d	10-Aug-20 A	28-Oct-26						
Auxiliary Building						50.0d	2.5d	24-Jun-24 A	05-Aug-26						
Reactor Building						548.9d	223.0d	21-Oct-24 A	03-Feb-27						
Intermediate Building						30.0d	153.0d	13-Jun-24 A	31-Jul-26						
Backfill and Grade						129.6d	129.6d	27-May-26	25-Nov-26						
Site Restoration Additional Costs						430.9d	99.0d	04-Nov-24 A	13-Oct-26						
Concrete Crushing & Security Barriers						430.9d	99.0d	04-Nov-24 A	13-Oct-26						