



April 20, 2026

**VIA ELECTRONIC FILING**

Mr. Adam J. Teitzman  
Commission Clerk  
Florida Public Service Commission  
2540 Shumard Oak Boulevard  
Tallahassee, FL 32399-0850

Re: Docket No. 20260032-WU  
Application for authority to transfer facilities and water Certificate No. 401-W  
from Placid Lakes Utilities, Inc. to Sunshine Water Services Company, in  
Highlands County.

Dear Mr. Teitzman:

On behalf of Sunshine Water Services Company, the following are the company's responses to the Commission's deficiency letter and data requests dated March 27, 2026:

**Deficiency:**

1. **Commitments and Obligations.** Rule 25-30.037(2)(j)(6), Florida Administrative Code (F.A.C.), requires a statement that the buyer will fulfill the commitments, obligations and representations of the seller with regard to utility matters. The applicant indicates that the Buyer does not intend to assume certain pre-closing debts, liabilities, or service-related obligations of the Seller. This does not satisfy the rule requirement, as the rule requires an affirmative statement that the Buyer will fulfill the Seller's commitments, obligations, and representations related to utility operations.

**Response:** Upon closing, Sunshine Water Services Company will fulfill the commitments, obligations, and representations of Placid Lakes with regard to water utility matters.

Data Requests:

1. **System Map.** Please provide a detailed system map showing the location of existing lines and treatment facilities throughout the Utility's distribution system. The map should be of sufficient scale and detail to enable correlation with the description of the territory.

**Response:** Please see Attachment 1.

2. **Territory Map.** Please provide an official county tax assessment map or other map showing township, range, and section, with a scale such as 1" = 200' or 1" = 500', with the transferred territory plotted thereon, consistent with Rule 25-30.029(2), F.A.C., and the legal description provided pursuant to Rule 25-30.037(2)(n), F.A.C. The territory map should be of sufficient size and scale to clearly show the perimeter of the entire territory being transferred.

**Response:** Please see Attachment 2.

3. **Number of Customers.** Please provide the number of customers, by customer class and meter size, being acquired by Sunshine in this transfer. Please include a description of the types of customers anticipated to be served, i.e., single family homes, mobile homes, duplexes, golf course clubhouse, or commercial.

**Response:** Please see the table below.

<b>Residential Water Customers</b>	
<b>Meter Size</b>	<b>Customer Count</b>
5/8" - 3/4" (Single family homes)	2310
1" (Single family homes)	27
5/8" - 3/4" (Park bathroom)	1
5/8" - 3/4" (Fire department bathroom)	2
<b>Commercial Water Customers</b>	
5/8"	18
1"	13
1 1/2"	1
2"	6
<b>Total Water Customer Count:</b>	<b>2378</b>

Thank you for your assistance in connection with this matter.

Sincerely,

A handwritten signature in blue ink that reads "Matthew Jones". The signature is written in a cursive style with a long horizontal stroke at the end.

Matthew J. Jones

MJJ/dk  
Attachment

cc: All parties of record (w/attachment)

## CERTIFICATE OF SERVICE

I HEREBY CERTIFY that a true and correct copy of the foregoing Response, filed on behalf of Sunshine Water Services Company, has been furnished by electronic mail on the 20th day of April 2026 to the following:

Major Thompson  
Suzanne Brownless  
Office of General Counsel  
Florida Public Service Commission  
Room 390L – Gerald L. Gunter Building  
2540 Shumard Oak Boulevard  
Tallahassee, FL 32399-0850  
[mthompson@psc.state.fl.us](mailto:mthompson@psc.state.fl.us)  
[sbrownless@psc.state.fl.us](mailto:sbrownless@psc.state.fl.us)  
[discovery-gcl@psc.state.fl.us](mailto:discovery-gcl@psc.state.fl.us)

Walt L. Trierweiler  
Charles Rehwinkel  
Patty Christensen  
Octavio Simoes-Ponce  
Austin Watrous  
Office of Public Counsel  
111 West Madison Street – Room 812  
Tallahassee, FL 32399-1400  
[trierweiler.walt@leg.state.fl.us](mailto:trierweiler.walt@leg.state.fl.us)  
[rehwinkel.charles@leg.state.fl.us](mailto:rehwinkel.charles@leg.state.fl.us)  
[christensen.patty@leg.state.fl.us](mailto:christensen.patty@leg.state.fl.us)  
[ponce.octavio@leg.state.fl.us](mailto:ponce.octavio@leg.state.fl.us)  
[watrous.austin@leg.state.fl.us](mailto:watrous.austin@leg.state.fl.us)

William E. Sundstrom  
Sundstrom Law Firm  
2548 Blairstone Pines Drive  
Tallahassee, FL 32301  
[wsundstrom@sflaw.com](mailto:wsundstrom@sflaw.com)

Laura Elowsky  
Placid Lakes Utilities, Inc.  
410 Washington Blvd., NW  
Lake Placid, FL 33852  
[lauralowsky@gmail.com](mailto:lauralowsky@gmail.com)



---

ATTORNEY

**Attachment 1**

**Water System Maps**



**BILL OF MATERIALS**

ITEM	QUANTITY	DESCRIPTION
1	1500'	3" CLASS 150 PIPE
2	1700'	4" CLASS 150 PIPE
3	2	3" GATE VALVE
4	2	4" GATE VALVE
5	100'	8" CLASS 150 PIPE

NOTE: MATERIALS LISTED ARE FOR PROPOSED LINES TO LAST LINE OF SECTION OR TO THE END OF WATER MAINS AS SHOWN.

WATER DISTRIBUTION SYSTEM  
 PLYMOUTH LAKE SUB, SEC. II  
 HIGHLAND COUNTY, FLORIDA

**TRIAD TECH., INC.**  
 6027 17TH STREET EAST  
 BRADENTON, FLA 33508  
 PHONE 756-6311

DATE: 10/24/04 SCALE: 1" = 40' DRAWN BY: [Signature]  
 APPROVED: [Signature] SHEET: 2 OF 2  
 FLORIDA REGISTERED ENGINEER NO. 40000

SECTION IV



**BILL OF MATERIALS**

ITEM	QUANTITY	DESCRIPTION
1	3500'	3" CLASS 150 P.C.
2	8100'	4" CLASS 150 P.C.
3	2400'	6" CLASS 150 P.C.
4	2	3" GATE VALVE
5	11	4" GATE VALVE
6	1	6" GATE VALVE

NOTE: MATERIALS LISTED ARE FOR PRESENT UNITS TO LAST SET LINE OF SECTION OR TO TEE OF WATER LINES AS SHOWN.

WATER DISTRIBUTION SYSTEM  
 PLACID LAKE SUBD., SEC II  
 HIGHLANDS COUNTY, FLORIDA



**TRIAD TECH., INC.**  
 6027 17TH STREET EAST  
 BRADENTON, FLA 33508  
 PHONE 756-6311

DATE 2 APR 79	SCALE 1" = 100'	DRAWN BY AVT	
APPROVED			SHEET OF 23
FLORIDA REGISTERED ENGINEER		NO. 00000	



**BILL OF MATERIALS**

ITEM	QUANTITY	DESCRIPTION
1	4150'	3" CLASS 160 P.V.C.
2	1250'	4" CLASS 160 P.V.C.
3	1050'	6" CLASS 160 P.V.C.
4	10	3" GATE VALVE
5	4	4" GATE VALVE
6	2	6" GATE VALVE

NOTE: MATERIALS LISTED ARE FOR PROPOSED LINES TO LIFT AT END OF SECTION ON TO THE OTHER WATER LINES AS SHOWN.

TRIAID TECH., INC.  
 WATER DISTRIBUTION SYSTEM  
 PLACID LAKES SUBD., SEC. III  
 HIGHLANDS COUNTY, FLORIDA

**TRIAID TECH., INC.**  
 6027 17TH STREET EAST  
 BRADENTON, FLA 33508  
 PHONE 756-6311

DATE: 03/24/74 SCALE: 1"=100' DRAWN BY: [Signature]  
 APPROVED: [Signature] SHEET: 4 OF 25  
 FLORIDA REGISTERED ENGINEER NO. 9590





WATER DISTRIBUTION SYSTEM			
PLACID LAKES SUBD., SEC. IV			
HIGHLANDS COUNTY, FLORIDA			
 <b>TRIAD TECH., INC.</b> 6027 17TH STREET EAST BRADENTON, FLA 33508 PHONE 756-6311			
DATE	SCALE	DRAWN BY	
20 MAR '79	1" = 100'	KST	
APPROVED			SHEET
FLORIDA REGISTERED ENGINEER	NO. 00000		16 OF 25

BILL OF MATERIALS

ITEM	DESCRIPTION	QUANTITY
1	6" PVC CLASS 160	7500 LINES FT
2	4" PVC CLASS 10	385 LINES FT
3	3" PVC CLASS 160	3200 LINES FT
4	5" GATE VALVES	5
5	4" GATE VALVES	5
6	3" GATE VALVES	4



638-  
A 2019  
755-483

WATER DISTRIBUTION SYSTEM  
 PLACIO LAKES UTILITIES, SECTION I  
 LAKE PLACID, FLORIDA

**TRIAD TECH., INC.**  
 6111-15TH STREET EAST  
 BRADENTON, FLA 33507  
 PHONE 756-6311

DATE: 7-1-75 SCALE: 1"=100' DRAWN BY: [Signature]  
 APPROVED: [Signature] SHEET: 8 OF 31  
 FLORIDA REGISTERED ENGINEER NO. 6700



NOTE: MATERIALS LISTED ARE FOR PROPOSED  
 UNITS TO LAST 400' LINE OF SECTION  
 OR TO THE OF WATER LINE AS SHOWN

**BILL OF MATERIALS**

ITEM	QUANTITY	DESCRIPTION
1	2,450'	3" CLASS 150 P.V.C.
2	1470'	4" CLASS 150 P.V.C.
3	3240'	6" CLASS 150 P.V.C.
4	14	2" GATE VALVE
5	4	4" GATE VALVE
6	4	6" GATE VALVE



WATER DISTRIBUTION SYSTEM  
 SECTION 1D  
 FLORIDA LARGES 3000

**TRIAD TECH., INC.**  
 6027 17TH STREET EAST  
 BRADENTON, FLA 33508  
 PHONE 756-6311

DATE: 1/27/71 SCALE: \_\_\_\_\_ DRAWN BY: MFC  
 APPROVED: \_\_\_\_\_  
 FLORIDA REGISTERED ENGINEER NO. \_\_\_\_\_

SHEET 10 OF 20



ITEM	QUANTITY	DESCRIPTION
1	1400'	3" CLASS HD P.V.C.
2	18750'	4" CLASS HD P.V.C.
3	1780'	6" CLASS HD P.V.C.
4	18	3" GATE VALVE
5	15	4" GATE VALVE

NOTE: MATERIALS LISTED ARE FOR PROPOSED UNITS AND LOTS. SEE PLAN OF SECTION OR TO USE OF WATER LINES AS SHOWN.

APPROVED SERIAL NO. WD 28-02062 DATE JUNE 14, 1976



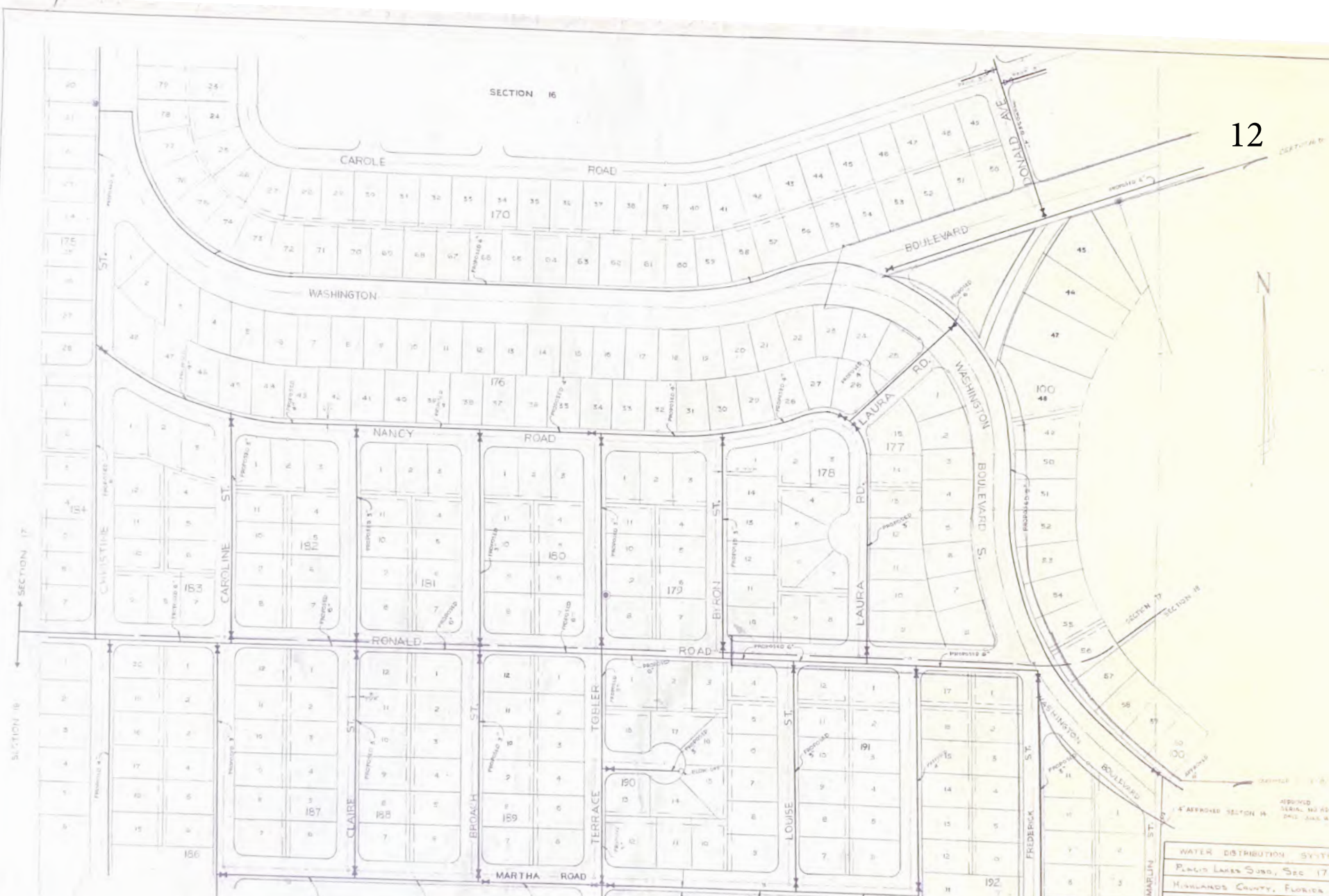
WATER DISTRIBUTION SYSTEM  
SECTION 15  
FLACID LAKES SUB.

**TRIAD TECH., INC.**  
6027 17TH STREET EAST  
BRADENTON, FLA 33508  
PHONE 756-6311

DATE	DRAWN BY	SCALE	1" = 100'	DRWN BY
APPROVED				
FLORIDA REGISTERED ENGINEER				NO. 10000

SHEET 10 OF 15

*Handwritten notes:*  
315' 0" 100' = 315'  
150'  
30'  
270' 0" 100' = 270'



APPROVED BILL OF MATERIALS

ITEM	QUANTITY	DESCRIPTION
1	7000'	3" CLASS 150 RVC
2	5960'	4" CLASS 150 RVC
3	8000'	6" CLASS 150 RVC
4	22	5" GATE VALVE
5	12	4" GATE VALVE
6	2	6" GATE VALVE

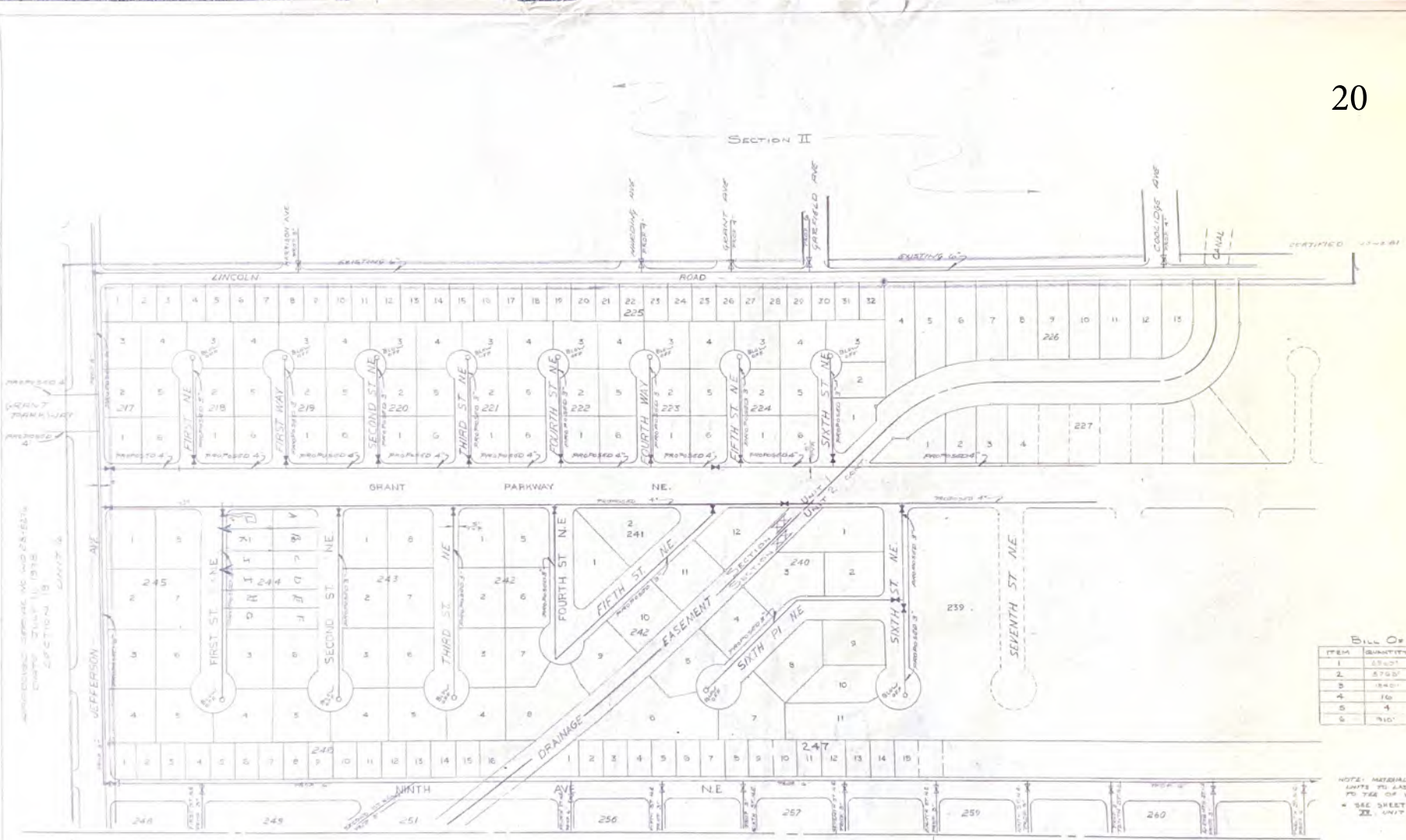
NOTE: MATERIALS LISTED ARE FOR PROPOSED UNITS TO EAST END LINE OF SECTION 16 TO THE END OF WATER LINES AS SHOWN.

WATER DISTRIBUTION SYSTEM  
 PALM LAKES SUBD, SEC 17 & 18  
 HIGHLANDS COUNTY, FLORIDA



**TRIAD TECH., INC.**  
 6027 17TH STREET EAST  
 BRADENTON, FLA 33508  
 PHONE 756-6311

DATE: 11-20-11 SCALE: 1"=100' DRAWN BY: [Signature]  
 APPROVED: [Signature] SHEET 12 OF 25  
 FLORIDA REGISTERED ENGINEER - NO. 11111



**BILL OF MATERIALS**

ITEM	QUANTITY	DESCRIPTION
1	2700'	8" CLASS 150 PVC
2	2700'	4" CLASS 150 PVC
3	240'	6" CLASS 150 PVC
4	16	8" GATE VALVE
5	4	4" GATE VALVE
6	710'	8" CLASS 150 PVC

NOTE: MATERIALS LISTED ARE FOR PROPOSED LAYOUT TO EAST END LINE OF SECTION XX, UNIT 2. SEE SHEET 21 OF 25 FOR SECTION XX, UNIT 2.

SECTION XX UNIT 3

SECTION XX UNIT 5

REV. 26 - JULY 20, 1987

WATER DISTRIBUTION SYSTEM  
 PACIFIC LAKES SUBD., SEC. 20 - UNITS 1-12  
 HIGHLANDS COUNTY, FLORIDA

**TRIAD TECH., INC.**  
 6027 17TH STREET EAST  
 BRADENTON, FLA 33508  
 PHONE 756-6311

DATE: JUNE 79 SCALE: AS SHOWN DRAWN BY: AWT  
 APPROVED: [Signature] SHEET 20 OF 25  
 FLORIDA REGISTERED ENGINEER NO. 10000

UNIT 2



Unit 6 6 8 1 1'

UNIT 4

TRACT B

**BILL OF MATERIALS**

ITEM	QUANTITY	DESCRIPTION
1	19,750'	3" CLASS 150 T.V.C.
2	8,080'	4" CLASS 150 T.V.C.
3	7520'	6" CLASS 150 T.V.C.
4	30	8" GATE VALVE
5	13	4" GATE VALVE
6	2	6" GATE VALVE

NOTE: MATERIALS LISTED ARE FOR MANHOLE UNITS TO LAST LOT LINE OF SECTION, OR TO THE SF WATER LINES AS SHOWN.

WATER DISTRIBUTION SYSTEM  
 PALM LAKE SUBD. SEC. 20 UNITS 315  
 HIGHLANDS COUNTY, FLORIDA

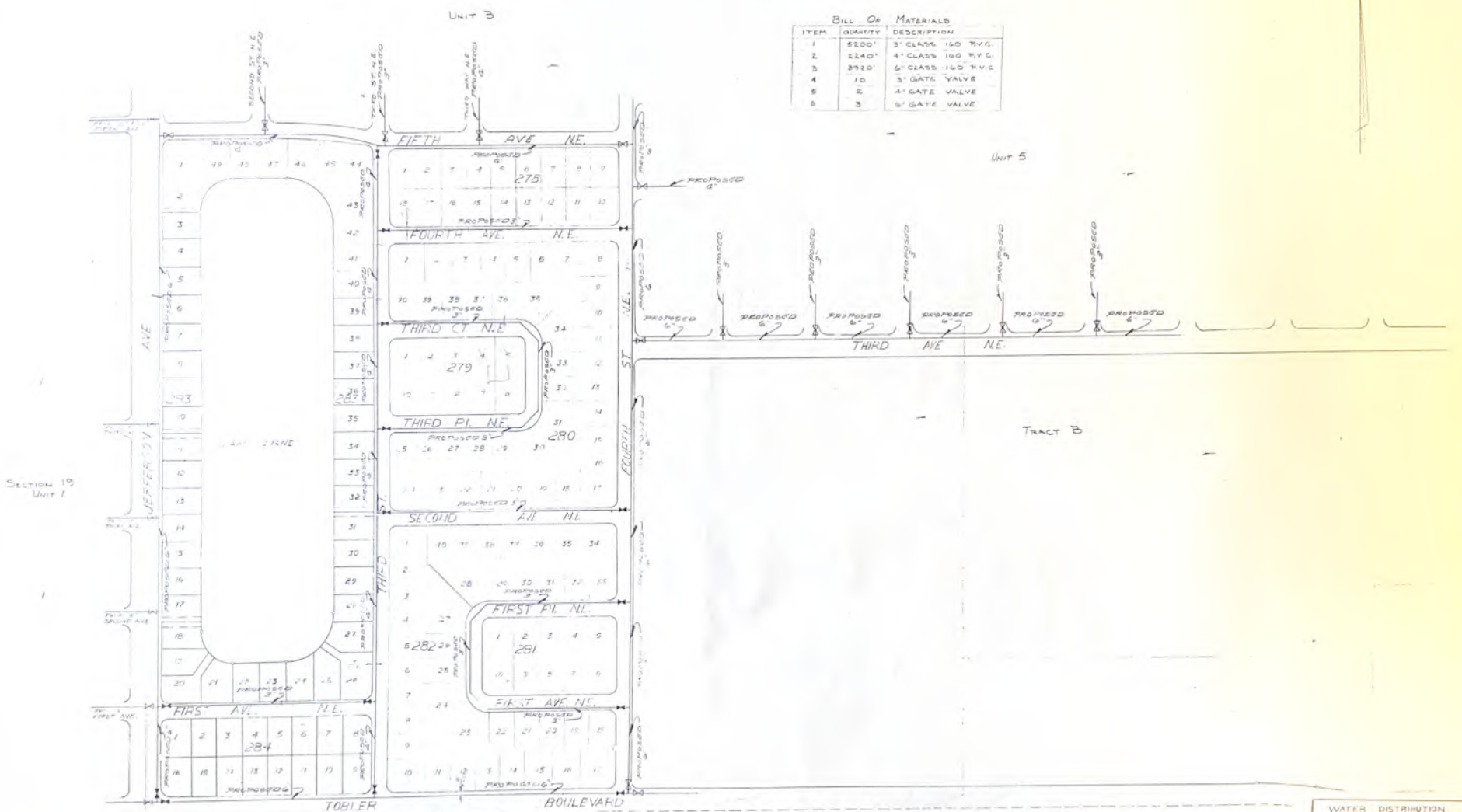
**TRIAD TECH., INC.**  
 6027 17TH STREET EAST  
 BRADENTON, FLA 33508  
 PHONE 756-6311

DATE: 10/20/76 SCALE: 1"=40' DRAWN BY: JTB  
 APPROVED: [Signature] SHEET: 27  
 FLORIDA REGISTERED ENGINEER NO. 10445

NOTE: MATERIALS LISTED ARE FOR PROPOSED UNITS TO LAST LOT LINE OF SECTION OR TO THE CENTER OF WATER LINES AS SHOWN.

Bill of Materials

ITEM	QUANTITY	DESCRIPTION
1	8200'	3" CLASS 150 P.V.C.
2	2240'	4" CLASS 150 P.V.C.
3	3920'	6" CLASS 150 P.V.C.
4	10	3" GATE VALVE
5	2	4" GATE VALVE
6	3	6" GATE VALVE



WATER DISTRIBUTION SYSTEM  
 FLUID LAKES SUBD, SEC 20 UNIT 4  
 HIGHLANDS COUNTY, FLORIDA

**TRIAD TECH, INC.**  
 6027 17TH STREET EAST  
 BRADENTON, FLA 33508  
 PHONE 756-6311

DATE: APR 75 SCALE: 1"=200' DRAWN BY: ADT  
 APPROVED: [Signature] SHEET 23  
 FLORIDA REGISTERED ENGINEER NO. 5000



NOTE: SCALE 1"=120'



NOV 2 1972

JEFFERSON AVE SEC 10  
 PALM BEACH LAKES DEVELOPMENT  
 LAKE PALM, PALM BEACH COUNTY, FLORIDA

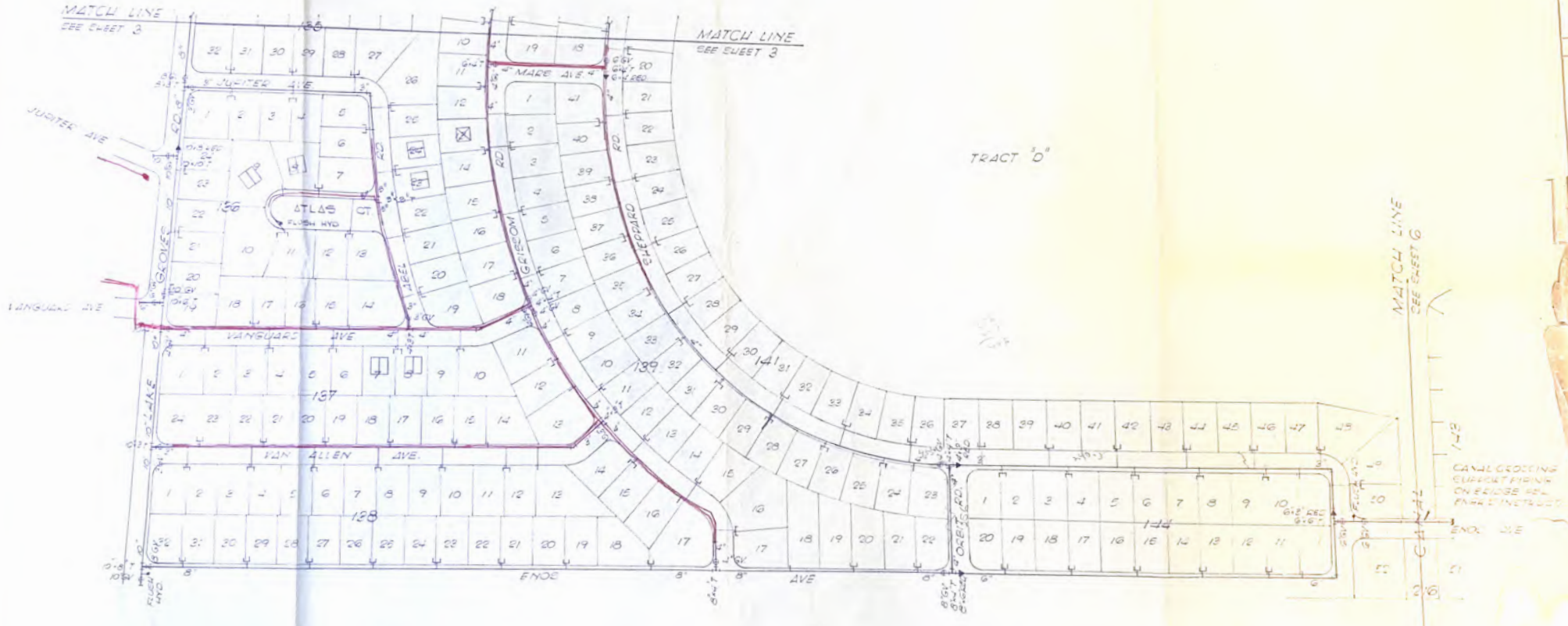
SCALE: NOTED	DATE: NOV 2 1972
DESIGNED BY: [Signature]	FILE # DRAWING # [Number]
DRAWN BY: [Signature]	SHEET [Number]
CHECKED BY: [Signature]	
NOTE BOOK NO. [Number]	

**HUTCHEON & O'NEAL**  
 CIVIL ENGINEERS & SURVEYORS  
 PALM BEACH, FLORIDA

NO.	REVISIONS	DATE	BY

SCALE 1"=120'

NOTE  
 □ = DUPLEX BUILDING  
 ⊠ = RESIDENTIAL BUILDING



SECTION II

SECTION 11

NOV 2 1972

PLACID LAKES DEVELOPMENT  
 LAKE PLACID, HIGHLAND COUNTY, FLORIDA

DESIGNED BY H.C.C.  
 DRAWN BY E.D.  
 CHECKED BY H.C.C.  
 NOTE BOOK NO. PALM BEACH

HUTCHEON & O'NEAL  
 CIVIL ENGINEERS & SURVEYORS  
 LAKE WILES

DATE 11/2/72  
 FILE & DRAWING NO. 100-100-100  
 SHEET 4 OF 7

NO.	REVISIONS	DATE	BY	SEAL





SIZE	QUANTITY	DESCRIPTION
1	7100'	1" DIA. ...
2	3400'	2" DIA. ...
3	2400'	3" DIA. ...
4	20'	4" DIA. ...
5	8'	8" DIA. ...
6	8'	12" DIA. ...

NOTE: MATERIALS LISTED ARE FOR PROPOSED UNIT TO LAST LOT LINE OF SECTION 19 TO TOP OF WATER LINE - AS SHOWN

UNIT 1, SECTION 19

DATE: 1/1/00				SCALE: 1/4" = 1'-0"		DRAWN BY: [Signature]	
APPROVED: [Signature]				SHEET: 4 OF 4		FLORIDA REGISTERED ENGINEER: NO. 12345	

**TRIAD TECH., INC.**  
 6027-17TH STREET EAST  
 BRADENTON, FLA 33507  
 PHONE 756-6311

Z



LOCATION MAP  
SCALE 1" = 100'

WATER DISTRIBUTION SYSTEM		
LAKE PLACID UTILITIES SECTION 1		
LAKE PLACID, FLORIDA		
 <b>TRIAD TECH., INC.</b> 6111-15TH STREET EAST BRADENTON, FLA. 33507 PHONE 756-6311		
DATE 1/28/76	SCALE 1" = 100'	DRAWN BY MGP
APPROVED	SHEET 11 OF 2	
FLORIDA REGISTERED ENGINEER		NO. 6500

**BILL OF MATERIALS**

ITEM	QUANTITY	DESCRIPTION
1	4700'	3" CLASS 150 PVC
2	4700'	4" CLASS 150 PVC
3	4700'	5" CLASS 150 PVC
4	8	3" GATE VALVE
5	73	4" GATE VALVE
6	2	6" GATE VALVE

NOTES: MATERIALS LISTED ARE THE STANDARD  
SIZES TO BE USED. LIST OF SECTIONS  
ON THE SET BY WATER LINES AS SHOWN



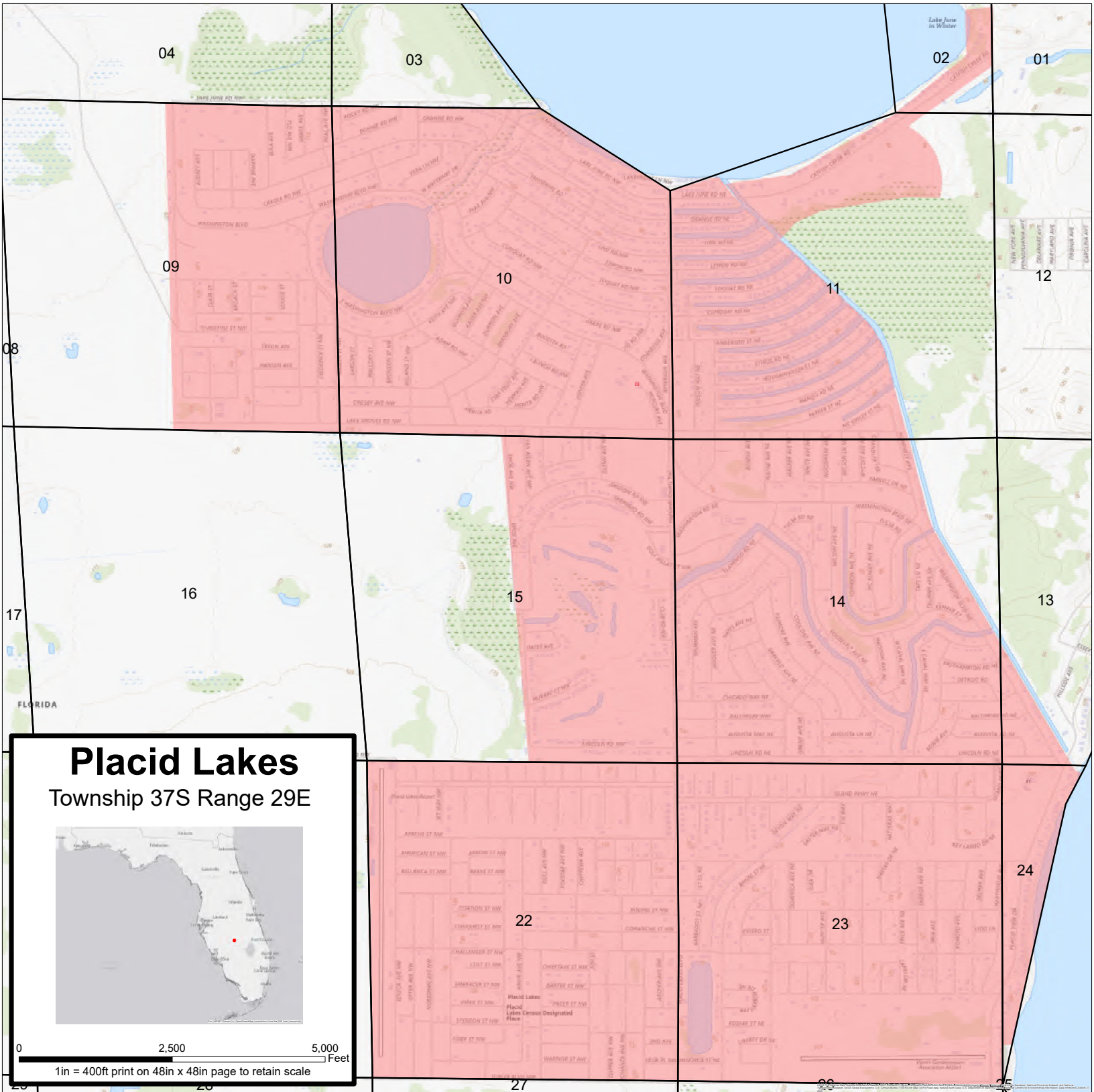
WATER DISTRIBUTION PLAN  
PLACID LAKES SUBD. SEC. IV  
HIGHLANDS COUNTY, FLORIDA

**TRIAD TECH., INC.**  
6027 17TH STREET EAST  
BRADENTON, FLA 3350  
PHONE 756-6311

DATE: \_\_\_\_\_ SCALE: \_\_\_\_\_ DRAWN BY: \_\_\_\_\_  
APPROVED: \_\_\_\_\_  
FLORIDA REGISTERED ENGINEER: \_\_\_\_\_

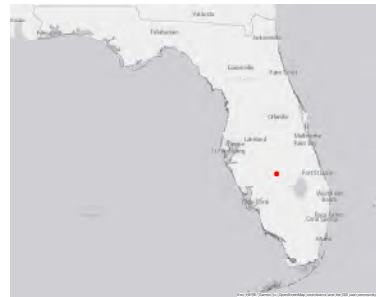
**Attachment 2**

**Water Territory Map**



# Placid Lakes

## Township 37S Range 29E



0 2,500 5,000  
 Feet

1 in = 400ft print on 48in x 48in page to retain scale