

GU618-19-AR

**ANNUAL REPORT OF
NATURAL GAS UTILITIES**

OFFICIAL COPY
Public Service Commission
Do Not Remove From This Office

Florida Public Utilities Company - Fort Meade Division

(EXACT NAME OF RESPONDENT)

1641 Worthington Road, Suite 220

West Palm Beach, FL 33409

(ADDRESS OF RESPONDENT)

TO THE

FLORIDA PUBLIC SERVICE COMMISSION

FOR THE

YEAR ENDED DECEMBER 31, 2019

Officer or other person to whom correspondence should be addressed concerning this report:

Name Michael Cassel Title Assistant Vice President, Regulatory & Governmental Affairs

Address 208 Wildlight Avenue, Yulee, FL 32097

Telephone No. (561) 252-0250

PSC/ECR 020-G (12/03)

INSTRUCTIONS FOR FILING THE ANNUAL REPORT OF NATURAL GAS UTILITIES

GENERAL INSTRUCTIONS

- I. Prepare this report in conformity with the Uniform System of Accounts (18 CFR 201) (U.S. of A.). Interpret all accounting words and phrases in accordance with the U.S. of A.
- II. Enter in whole numbers (dollars or Mcf) only, except where otherwise noted. (Enter cents for averages and figures per unit where cents are important.) The truncating of cents is allowed except on the four basic financial statements where rounding to dollars is required. The amounts shown on all supporting pages must agree with the amounts entered on the statements that they support. When applying thresholds to determine significance for reporting purposes, use for balance sheet accounts the balances at the end of the current reporting year, and use for statement of income accounts the current year's amounts.
- III. Complete each question fully and accurately, even if it has been answered in a previous annual report. Enter the word "None" where it truly and completely states the fact.
- IV. For any page that is not applicable to the respondent, enter the words "Not Applicable" on the particular page.
- V. Provide a supplemental statement further explaining accounts or pages as necessary. Attach the supplemental statement to the page being supplemented on 8 1/2 by 11 inch paper. Provide the appropriate identification information on the supplemental page, including the title of the page and the page number. Do not change the page numbers.
- VI. Do not make references to reports of previous years or to other reports in lieu of required entries, except as specifically authorized.
- VII. Wherever schedule pages refer to figures from a previous year, the figures reported must be based upon those shown by the annual report of the previous year, or an appropriate explanation given as to why different figures were used.
- VIII. Report all gas volumes on a pressure base of 14.73 psia and a temperature base of 60° F.

DEFINITIONS

- I. Btu per cubic foot - The total heating value expressed in Btu, produced by the combustion, at constant pressure, of the amount of the gas which would occupy a volume of 1 cubic foot at a temperature of 60° F if saturated with water vapor and under a pressure equivalent to that of 30 inches of mercury at 32° F, and under standard gravitational force (980.665 cm per sec. ²) with air of the same temperature and pressure as the gas, when the products of combustion are cooled to the initial temperature of gas and air when the water formed by combustion is condensed to the liquid state. (Sometimes called gross heating value or total heating value.)
- II. Respondent - The person, corporation, licensee, agency, authority, or other legal entity or instrumentality in whose behalf the report is made.

ANNUAL REPORT OF NATURAL GAS UTILITIES

IDENTIFICATION

01 Exact Legal Name of Respondent Florida Public Utilities Company - Fort Meade Division	02 Year of Report December 31, 2019
03 Previous Name and Date of Change (if name changed during year)	
04 Address of Principal Office at End of Year (Street, City, State, Zip Code) 1641 Worthington Road, Suite 220, West Palm Beach, FL 33409	
05 Name of Contact Person Michael Cassel	06 Title of Contact Person Assistant Vice President, Regulatory & Governmental Affairs
07 Address of Contact Person (Street, City, State, Zip Code) 208 Wildlight Avenue, Yulee, FL 32097	
08 Telephone of Contact Person, Including Area Code (561) 252-0250	09 Date of Report (Mo., Day, Yr) 4/30/2020

ATTESTATION

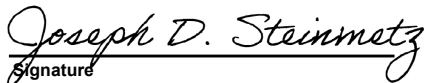
I certify that I am the responsible accounting officer of

Florida Public Utilities Company - Fort Meade Division
that I have examined the following report; that to the best of my knowledge, information, and belief, all statements of fact contained in the said report are true and the said report is a correct statement of the business and affairs of the above-named respondent in respect to each and every matter set forth therein during the period from January 1, 2019 to December 31, 2019, inclusive.

I also certify that all affiliated transfer prices and affiliated cost allocations were determined consistent with the methods reported to this Commission on the appropriate forms included in this report.

I am aware that Section 837.06, Florida Statutes, provides:

Whoever knowingly makes a false statement in writing with the intent to mislead a public servant in the performance of his or her official duty shall be guilty of a misdemeanor of the second degree, punishable as provided in S. 775.082 and S. 775.083.


Signature

4/30/2020

Date

Joseph D. Steinmetz
Name

Vice President, Controller
Title

TABLE OF CONTENTS

Title of Schedule (a)	Page No. (b)	Title of Schedule (a)	Page No. (b)
GENERAL CORPORATE INFORMATION AND FINANCIAL STATEMENTS		INCOME ACCOUNT SUPPORTING SCHEDULES	
Control Over Respondent	3	Gas Operating Revenues	26
Corporations Controlled By Respondent	3	Gas Operation and Maintenance Expenses	27-29
Officers	4	Number of Gas Department Employees	29
Directors	4	Gas Purchases	30
Security Holders and Voting Powers	5	Gas Used in Utility Operations - Credit	30
Important Changes During the Year	5	Regulatory Commission Expenses	31
Comparative Balance Sheet	6-7	Miscellaneous General Expenses - Gas	31
Statement of Income	8-9	Distribution of Salaries and Wages	32
Statement of Retained Earnings	10	Charges for Outside Prof. and Other Consultative Serv	33
Notes to Financial Statements	11	Particulars Concerning Certain Income Deduction and Interest Charges Accounts	33
BALANCE SHEET SUPPORTING SCHEDULES		REGULATORY ASSESSMENT FEE	
(Assets And Other Debits)		Reconciliation of Gross Operating Revenues - Annual Report versus Regulatory Assessment Fee Return	
Summary of Utility Plant and Accum. Prov. for Depreciation, Amortization, and Depletion	12		34
Gas Plant in Service	13-14	DIVERSIFICATION ACTIVITY	
Accumulated Depreciation & Amortization	15-16	Corporate Structure	
Construction Work in Progress - Gas	17		35
Construction Overheads - Gas	17	Summary of Affiliated Transfers and Cost Allocations	36
Prepayments	18	New or Amended Contracts with Affiliated Companies	37
Extraordinary Property Losses	18	Individual Affiliated Transactions in Excess of \$25,000	37
Unrecovered Plant and Regulatory Study Costs	18	Assets or Rights Purchased from or Sold to Affiliates	38
Other Regulatory Assets	19	Employee Transfers	38
Miscellaneous Deferred Debits	19		
(Liabilities and Other Credits)			
Securities Issued and Securities Refunded or Retired During the Year	20		
Unamortized Loss and Gain on Reacquired Debt	20		
Long-Term Debt	21		
Unamortized Debt Exp., Premium and Discount on Long-Term Debt	21		
Miscellaneous Current and Accrued Liabilities	22		
Other Deferred Credits	22		
Other Regulatory Liabilities	22		
Taxes Other Than Income Taxes	23		
Accumulated Deferred Investment Tax Credits	23		
Accumulated Deferred Income Taxes	24		
Reconciliation of Reported Net Income with Taxable Income for Federal Income Taxes	25		

Name of Respondent Florida Public Utilities Company - Fort Meade Division	For the Year Ended December 31, 2019
--	---

CONTROL OVER RESPONDENT

1. If any corporation, business trust, or similar organization or combination of such organizations jointly held control over the respondent at end of year, state name of controlling corporation or organization, manner in which control was held, and extent of control. If control was in a holding company organization, show the chain of ownership or control to the main parent company or organization. If control was held by a trustee(s), state name of trustee(s).

2. If the above required information is available from the SEC 10K Report Form filing, a specific reference to the report form (i.e. year and company title) may be listed provided the fiscal years for both the 10-K report and this report are compatible.

The Fort Meade Division of Florida Public Utilities Company is an operating division of Florida Public Utilities Company, which is a wholly-owned subsidiary of Chesapeake Utilities Corporation. The most recent annual report on Form 10-K filed with the Securities and Exchange Commission by Chesapeake Utilities Corporation contains the organization structure.

CORPORATIONS CONTROLLED BY RESPONDENT

1. Report below the names of all corporations, business trusts, and similar organizations, controlled directly or indirectly by respondent at any time during the year. If control ceased prior to end of year, give particulars (details) in a footnote.

2. If control was by other means than a direct holding of voting rights, state in a footnote the manner in which control was held, naming any intermediaries involved.

3. If control was held jointly with one or more other interests, state the fact in a footnote and name the other interests.

4. If the above required information is available from the SEC 10-K Report Form filing, a specific reference to the report form (i.e. year and company title) may be listed in column (a) provided the fiscal years for both the 10-K report and this report are compatible.

DEFINITIONS

1. See the Uniform System of Accounts for a definition of control.

2. Direct control is that which is exercised without interposition of an intermediary.

3. Indirect control is that which is exercised by the interposition of an intermediary which exercises direct control.

4. Joint control is that in which neither interest can effectively control or direct action without the consent of the other, as where the voting control is equally divided between two holders, or each party holds a veto power over the other. Joint control may exist by mutual agreement or understanding between two or more parties who together have control within the meaning of the definition of control in the Uniform System of Accounts, regardless of the relative voting rights of each party.

Name of Company Controlled (a)	Kind of Business (b)	Percent Voting Stock Owned (c)	Footnote Ref. (d)
THE FORT MEADE DIVISION OF FLORIDA PUBLIC UTILITIES COMPANY DOES NOT CONTROL ANY OTHER ORGANIZATIONS, BUSINESS TRUSTS, OR CORPORATIONS. HOWEVER, FLORIDA PUBLIC UTILITIES COMPANY OWNS, FLOGAS CORPORATION, A PROPANE DISTRIBUTION SUBSIDIARY. ALSO, OUR PARENT COMPANY, CHESAPEAKE UTILITIES CORPORATION DOES DIRECTLY OR INDIRECTLY CONTROL OTHER SUBSIDIARIES. THESE ORGANIZATIONS ARE LISTED IN CHESAPEAKE'S FORM 10-K.			

OFFICERS

1. Report below the name, title and salary for each executive officer whose salary is \$50,000 or more. An "executive officer" of a respondent includes its president, secretary, treasurer, and vice president in charge of a principal business unit, division or function (such as sales, administration or finance), and any other person who performs similar policymaking functions.

2. If a change was made during the year in the incumbent of any position, show name and total remuneration of the previous incumbent, and date the change in incumbency was made.

Title (a)	Name of Officer (b)	Salary for Year (c)
Director, Chairman (FPU), President & CEO (CUC)	Jeffrey M. Householder	\$ 600
Senior Vice President/Secretary/General Counsel/Chief Policy Risk Officer	James Moriarty	\$ 377
Senior Vice President/Chief Financial Officer/Assistant Secretary	Beth W. Cooper	\$ 379
Senior Vice President (CUC)	Jeffrey S. Sylvester (1)	\$ -
Vice President/Controller	Joseph D. Steinmetz	\$ 205
President (FPU); Senior Vice President (CUC)	Kevin J. Webber (2)	\$ 40
Vice President/Chief Accounting Officer	Michael D. Galtman	\$ 158
Chief Information Officer	Vikrant A. Gadgil	\$ 266
Vice President/Treasurer	Thomas E. Mahn	\$ 198
Vice President	Cheryl Martin	\$ 266
Chief Human Resources Officer	Lou J. Anatrella	\$ 281
Assistant Vice President	Devon S. Rudloff	\$ 195
Assistant Vice President	Nicole T. Carter (3)	\$ 407
Assistant Vice President	Michael D. Cassel	\$ 1,423
Assistant Vice President	Barry D. Kennedy	\$ 3,294
Assistant Vice President	Drane A. Shelley	\$ -
Assistant Vice President	Stacie L. Roberts	\$ 164

Note: The salaries above represent only that portion allocated to FPU- Fort Meade natural gas division

(1) Effective 12/6/2019 Senior Vice President of Pipeline Transmission and Regulated Gas and Electric Distribution (CUC)

(2) Effective January 2020 Senior Vice President, Unregulated Energy Delivery and Business Development (CUC)

(3) Effective 2/5/2020 no longer with the Company

DIRECTORS

1. Report below the information called for concerning each director of the respondent who held office at any time during the year. Include in column (a) abbreviated titles of the directors who are officers of the respondent.

2. Designate members of the Executive Committee by an asterisk and the Chairman of the Executive Committee by a double asterisk.

Name (and Title) of Director (a)	Principal Business Address (b)	No. of Directors Meetings During Yr. (c)	Fees During Year (d)
Jeffrey M. Householder, Director, Chairman **	909 Silver Lake Blvd., Dover Delaware 19904	5	\$ -
Eugene H. Bayard, Director	909 Silver Lake Blvd., Dover Delaware 19904	5	\$ -
Thomas J. Bresnan, Director	909 Silver Lake Blvd., Dover Delaware 19904	5	\$ -
Ronald G. Forsythe, Jr., Ph.D., Director	909 Silver Lake Blvd., Dover Delaware 19904	5	\$ -
Thomas P. Hill, Jr., Director	909 Silver Lake Blvd., Dover Delaware 19904	5	\$ -
Dennis S. Hudson, III, Director	909 Silver Lake Blvd., Dover Delaware 19904	5	\$ -
Paul L. Maddock, Jr., Director	909 Silver Lake Blvd., Dover Delaware 19904	5	\$ -
Calvert A. Morgan, Jr., Director	909 Silver Lake Blvd., Dover Delaware 19904	5	\$ -
Dianna F. Morgan, Director	909 Silver Lake Blvd., Dover Delaware 19904	5	\$ -
John R. Schimkaitis, Director	909 Silver Lake Blvd., Dover Delaware 19904	5	\$ -
Lila A. Jaber, Director (1)	909 Silver Lake Blvd., Dover Delaware 19904	0	\$ -
Michael P. McMasters, Director (2)	909 Silver Lake Blvd., Dover Delaware 19904	1	\$ -

(1) Appointed Director in 11/2019, effective 1/2020

(2) Effective May 2019 no longer Director

SECURITY HOLDERS AND VOTING POWERS

1. Give the names and addresses of the 10 security holders of the respondents who, at the date of the latest closing of the stock book or compilation of the list of stockholders of the respondent, prior to the end of the year, had the highest voting powers in the respondent, and state the number of votes which each would have had the right to cast on that date if a meeting were in order. If any such holder held in trust, give in a footnote the known particulars of the trust (whether voting trust, etc.) duration of the trust, and principal holders of beneficiary interests in the trust. If the stock book was not closed or a list of stockholders was not compiled within one year prior to the end of the year, or if since the previous compilation of a list of stockholders, some other class of security has become vested with voting rights, then show such 10 security holders as of the close of the year. Arrange the names of the security holders in the order of voting power, commencing with the highest. Show in column (a) the titles of officers and directors included in such list of 10 security holders.

2. If any security other than stock carries voting rights, explain in a supplemental statement of circumstances whereby such security became vested with voting rights and give others important particulars (details) concerning the voting rights of such security. State whether voting rights are actual or contingent if contingent, describe the contingency.

3. If any class or issue of security has any special privileges in the election of directors, trustees or managers, or in the determination of corporate action by any method, explain briefly in a footnote.

4. Furnish particulars (details) concerning any options, warrants, or rights outstanding at the end of the year for others to purchase securities of the respondent or any securities or other assets owned by the respondent, including prices, expiration dates, and other material information relating to exercise of the options, warrants, or rights. Specify the amount of such securities or assets so entitled to be purchased by any officer, director, associated company, or any of the ten largest security holders.

Name (Title) and Address of Security Holder (a)	VOTING SECURITIES			
	Number of votes as of (date):			
	Total Votes (b)	Common Stock (c)	Preferred Stock (d)	Other (e)
TOTAL votes of all voting securities				
TOTAL number of security holders				
TOTAL votes of security holders listed below				
<p>Chesapeake Utilities Corporation owns 100% of the shares of Florida Public Utilities Company.</p> <p>Beth W. Cooper Executive Vice President, CFO and Assistant Corporate Secretary 909 Silver Lake Boulevard Dover, Delaware 19904</p>				

IMPORTANT CHANGES DURING THE YEAR

Give particulars (details) concerning the matters indicated below. Make the statements explicit and precise, and number them in accordance with the inquires. Each inquiry should be answered. Enter "none" "not applicable," or "NA" where applicable. If information which answers an inquiry is given elsewhere in the report, make a reference to the schedule in which it appears.

1. Acquisition of ownership in other companies by reorganization, merger, or consolidation with other companies: Give name of companies involved, particulars concerning the transactions.

2. Purchase or sale of an operating unit or system: Give brief description of the property, and of the transactions relating thereto, and reference to Commission authorization, if any was required.

3. Important extension or reduction of transmission or distribution system: State territory added or relinquished and date operations began or ceased also the approximate number of customers added or lost and approximate annual revenues of each class of service.

4. State briefly the status of any materially important legal proceedings pending at the end of the year, and the results of any such proceedings culminated during the year.

5. State briefly the status of any materially important transactions of the respondent not disclosed elsewhere in this report in which an officer, director, security holder, voting trustee, associated company or known associate of any of these persons was a party or in which any such person had a material interest.

- 1 None
- 2 None
- 3 None
- 4 None
- 5 None

COMPARATIVE BALANCE SHEET (ASSETS AND OTHER DEBITS)

Line No.	Title of Account (a)	Ref. Page No. (b)	Balance at Beginning of Year (c)	Balance at End of Year (d)
1	UTILITY PLANT			
2	Utility Plant (101-106, 114)	12	\$ 1,122,382	\$ 1,167,029
3	Construction Work in Progress (107)	12	\$ 4,175	\$ 49,877
4	TOTAL Utility Plant Total of lines 2 and 3)		\$ 1,126,557	\$ 1,216,906
5	(Less) Accum. Prov. for Depr., Amort., Depl. & Acq. Adj. (108, 111, 115)	12	\$ (265,754)	\$ (180,131)
6	Net Utility Plant (Total of line 4 less 5)		\$ 860,803	\$ 1,036,775
7	Utility Plant Adjustments (116)	11	\$ -	\$ -
8	Gas Stored (117.1, 117.2, 117.3, 117.4)	-	\$ -	\$ -
9	OTHER PROPERTY AND INVESTMENTS			
10	Nonutility Property (121)		\$ -	\$ -
11	(Less) Accum. Prov. for Depr. and Amort. (122)	-	\$ -	\$ -
12	Investments in Associated Companies (123)	-	\$ -	\$ -
13	Investment in Subsidiary Companies (123.1)	-	\$ -	\$ -
14	Other Investments (124)	-	\$ -	\$ -
15	Special Funds (125, 126, 128)	-	\$ -	\$ -
16	TOTAL Other Property and Investments (Total of lines 10 through 15)		\$ -	\$ -
17	CURRENT AND ACCRUED ASSETS			
18	Cash (131)	-	\$ 950	\$ 7,208
19	Special Deposits (132-134)	-	\$ -	\$ -
20	Working Funds (135)	-	\$ -	\$ -
21	Temporary Cash Investments (136)	-	\$ -	\$ -
22	Notes Receivable (141)	-	\$ -	\$ -
23	Customer Accounts Receivable (142)	-	\$ 30,110	\$ 41,781
24	Other Accounts Receivable (143)	-	\$ 89	\$ 108
25	(Less) Accumulated Provision for Uncollectible Accounts-Credit (144)	-	\$ (875)	\$ (1,297)
26	Notes Receivable from Associated Companies (145)	-	\$ -	\$ -
27	Accounts Receivable from Associated Companies (146)	-	\$ -	\$ -
28	Fuel Stock (151)	-	\$ -	\$ -
29	Fuel Stock Expense Undistributed (152)	-	\$ -	\$ -
30	Residuals (Electric) and Extracted Products (Gas) (153)	-	\$ -	\$ -
31	Plant Material and Operating Supplies (154)	-	\$ 14,437	\$ 14,437
32	Merchandise (155)	-	\$ -	\$ -
33	Other Material and Supplies (156)	-	\$ -	\$ -
34	Stores Expenses Undistributed (163)	-	\$ -	\$ -
35	Gas Stored Underground & LNG Stored (164.1-164.3)	-	\$ -	\$ -
36	Prepayments (165)	18	\$ 1,335	\$ 3,515
37	Advances for Gas (166-167)	-	\$ -	\$ -
38	Interest and Dividends Receivable (171)	-	\$ -	\$ -
39	Rents Receivable (172)	-	\$ -	\$ -
40	Accrued Utility Revenues (173)	-	\$ 15,220	\$ 16,757
41	Miscellaneous Current and Accrued Assets (174)	-	\$ -	\$ -
42	TOTAL Current and Accrued Assets (Total of lines 18 through 41)		\$ 61,266	\$ 82,509
43	DEFERRED DEBITS			
44	Unamortized Debt Expense (181)	-	\$ -	\$ -
45	Extraordinary Property Losses (182.1)	18	\$ -	\$ -
46	Unrecovered Plant and Regulatory Study Costs (182.2)	18	\$ -	\$ -
47	Other Regulatory Assets (182.3)	19	\$ -	\$ -
48	Preliminary Survey and Investigation Charges (Gas) (183.1, 183.2)	-	\$ -	\$ -
49	Clearing Accounts (184)	-	\$ -	\$ 46
50	Temporary Facilities (185)	-	\$ -	\$ -
51	Miscellaneous Deferred Debits (186)	19	\$ 720,121	\$ 715,415
52	Deferred Losses from Disposition of Utility Plant. (187)	-	\$ -	\$ -
53	Research, Development and Demonstration Expenditures (188)	-	\$ -	\$ -
54	Unamortized Loss on Reacquired Debt (189)	20	\$ -	\$ -
55	Accumulated Deferred Income Taxes (190)	24	\$ 12,327	\$ 329
56	Unrecovered Purchased Gas Costs (191)	-	\$ -	\$ -
57	TOTAL Deferred Debits (Total of lines 44 through 56)		\$ 732,448	\$ 715,790
58	TOTAL Assets and other Debits (Total of lines 6, 7, 8, 16, 42, 57)		\$ 1,654,517	\$ 1,835,074

COMPARATIVE BALANCE SHEET (LIABILITIES AND OTHER CREDITS)

Line No.	Title of Account (a)	Ref. Page No. (b)	Balance at Beginning of Year (c)	Balance at End of Year (d)
1	PROPRIETARY CAPITAL			
2	Common Stock (201, 202, 203, 205, 206, 207)	-	\$ -	\$ -
3	Preferred Stock Issued (204)	-	\$ -	\$ -
4	Other Paid-In Capital (208-214)	-	\$ 6,194	\$ -
5	Retained Earnings (215, 216)	10	\$ (244,169)	\$ (331,810)
6	Unappropriated Undistributed Subsidiary Earnings (216.1)	10	\$ -	\$ -
7	(Less) Reacquired Capital Stock (217)	-	\$ -	\$ -
8	TOTAL Proprietary Capital (Total of lines 2 through 7)		\$ (237,975)	\$ (331,810)
9	LONG-TERM DEBT			
10	Bonds (221)	21	\$ -	\$ -
11	(Less) Reacquired Bonds (222)	21	\$ -	\$ -
12	Advances from Associated Companies (223)	21	\$ -	\$ -
13	Other Long-Term Debt (224)	21	\$ -	\$ -
14	Unamortized Premium on Long-Term Debt (225)	21	\$ -	\$ -
15	(Less) Unamortized Discount on Long-Term Debt-Debit (226)	21	\$ -	\$ -
16	TOTAL Long-Term Debt (Total of lines 10 through 15)		\$ -	\$ -
17	OTHER NONCURRENT LIABILITIES			
18	Obligations Under Capital Leases - Noncurrent (227)	-	\$ -	\$ 857
19	Accumulated Provision for Property Insurance (228.1)	-	\$ 12,087	\$ -
20	Accumulated Provision for Injuries and Damages (228.2)	-	\$ (4)	\$ -
21	Accumulated Provision for Pensions and Benefits (228.3)	-	\$ 465	\$ 310
22	Accumulated Miscellaneous Operating Provisions (228.4)	-	\$ -	\$ -
23	Accumulated Provision for Rate Refunds (229)	-	\$ -	\$ -
24	TOTAL Other Noncurrent Liabilities (Total of lines 18 through 23)		\$ 12,548	\$ 1,167
25	CURRENT AND ACCRUED LIABILITIES			
26	Notes Payable (231)	-	\$ -	\$ -
27	Accounts Payable (232)	-	\$ 7,876	\$ 7,521
28	Notes Payable to Associated Companies (233)	-	\$ -	\$ -
29	Accounts Payable to Associated Companies (234)	-	\$ 1,789,398	\$ 1,905,377
30	Customer Deposits (235)	-	\$ 15,149	\$ 23,762
31	Taxes Accrued (236)	-	\$ (227,054)	\$ (106,254)
32	Interest Accrued (237)	-	\$ 298	\$ 667
33	Dividends Declared (238)	-	\$ -	\$ -
34	Matured Long-Term Debt (239)	-	\$ -	\$ -
35	Matured Interest (240)	-	\$ -	\$ -
36	Tax Collections Payable (241)	-	\$ 23,364	\$ 28,075
37	Miscellaneous Current and Accrued Liabilities (242)	22	\$ 14,377	\$ 7,340
38	Obligations Under Capital Leases-Current (243)	-	\$ -	\$ 446
39			\$ -	\$ -
40	TOTAL Current and Accrued Liabilities (Total of lines 26 through 39)		\$ 1,623,408	\$ 1,866,934
41	DEFERRED CREDITS			
42	Customer Advances for Construction (252)	-	\$ -	\$ -
43	Other Deferred Credits (253)	22	\$ (14,087)	\$ 2,118
44	Other Regulatory Liabilities (254)	22	\$ 97,412	\$ 85,661
45	Accumulated Deferred Investment Tax Credits (255)	23	\$ -	\$ -
46	Deferred Gains from Disposition of Utility Plant (256)	-	\$ -	\$ -
47	Unamortized Gain on Reacquired Debt (257)	20	\$ -	\$ -
48	Accumulated Deferred Income Taxes (281-283)	24	\$ 173,211	\$ 211,004
49	TOTAL Deferred Credits (Total of lines 42 through 48)		\$ 256,536	\$ 298,783
50				
51	TOTAL Liabilities and Other Credits (Total of lines 8, 16, 24, 40 and 49)		\$ 1,654,517	\$ 1,835,074

STATEMENT OF INCOME

1. Use page 11 for important notes regarding the statement of income or any account thereof.
 2. Give concise explanations on page 11 concerning significant amounts of any refunds made or received during the year.
 3. Enter on page 11 a concise explanation of only those changes in accounting methods made during the year

which had an effect on net income, including the basis of allocations and apportionments from those used in the preceding year. Also give the approximate dollar effect of such changes.
 4. Explain in a footnote if the previous year's figures are different from that reported in prior reports.

Line No.	Account (a)	Ref. Page No. (b)	Total Gas Utility Current Year (c)	Total Gas Utility Previous Year (d)
1	UTILITY OPERATING INCOME			
2	Operating Revenues (400)	26	\$ 221,568	\$ 229,528
3	Operating Expenses			
4	Operation Expenses (401)	27-29	\$ 223,029	\$ 221,155
5	Maintenance Expenses (402)	27-29	\$ 3,038	\$ 2,710
6	Depreciation Expense (403)	-	\$ 22,076	\$ 31,172
7	Amortization & Depletion of Utility Plant (404-405)	-		
8	Amortization of Utility Plant Acquisition Adjustment (406)	-		
9	Amortization of Property Losses, Unrecovered Plant and Regulatory Study Costs (407.1)	-		
10	Amortization of Conversion Expenses (407.2)	-		
11	Regulatory Debits (407.3)	-		
12	(Less) Regulatory Credits (407.4)	-		
13	Taxes Other Than Income Taxes (408.1)	23	\$ 44,374	\$ 38,115
14	Income Taxes - Federal (409.1)	-	\$ (46,434)	\$ (62,802)
15	- Other (409.1)	-	\$ (10,698)	\$ (16,511)
16	Provision for Deferred Income Taxes (410.1)	24	\$ 46,356	\$ 66,695
17	(Less) Provision for Deferred Income Taxes - Cr.(411.1)	24	\$ (3,243)	\$ (10,572)
18	Investment Tax Credit Adjustment - Net (411.4)	23		
19	(Less) Gains from Disposition of Utility Plant (411.6)	-		
20	Losses from Disposition of Utility Plant (411.7)	-		
21	Other Operating Income (412-414)	-		
22	TOTAL Utility Operating Expenses (Total of lines 4 -21)		\$ 278,498	\$ 269,962
23	Net Utility Operating Income (Total of line 2 less 22)			
24	(Carry forward to page 9, line 25)		\$ (56,930)	\$ (40,434)

Name of Respondent Florida Public Utilities Company - Fort Meade Division	For the Year Ended December 31, 2019
--	---

STATEMENT OF INCOME (Continued)

Line No.	Account (a)	Ref. Page No. (b)	TOTAL	
			Current Year (c)	Previous Year (d)
25	Net Utility Operating Income (Carried forward from page 8)		\$ (56,930)	\$ (40,434)
26	Other Income and Deductions			
27	Other Income			
28	Nonutility Operating Income			
29	Revenues From Merchandising, Jobbing and Contract Work (415)	-		
30	(Less) Costs and Exp. of Merchandising, Job & Contract Work (416)	-		
31	Revenues From Nonutility Operations (417)	-	\$ 7	\$ (82)
32	(Less) Expenses of Nonutility Operations (417.1)	-		
33	Nonoperating Rental Income (418)	-		
34	Equity in Earnings of Subsidiary Companies (418.1)	10		
35	Interest and Dividend Income (419)	-		
36	Allowance for Other Funds Used During Construction (419.1)	-		
37	Miscellaneous Nonoperating Income (421)	-	\$ -	\$ 1
38	Gain on Disposition of Property (421.1)	-		
39	TOTAL Other Income (Total of lines 29 through 38)		\$ 7	\$ (81)
40	Other Income Deductions			
41	Loss on Disposition of Property (421.2)	-		
42	Miscellaneous Amortization (425)	33		
43	Miscellaneous Income Deductions (426.1-426.5)	33		
44	TOTAL Other Income Deductions (Total of lines 41 through 43)		\$ -	\$ -
45	Taxes Applicable to Other Income and Deductions			
46	Taxes Other Than Income Taxes (408.2)	-		
47	Income Taxes - Federal (409.2)	-	\$ 24	\$ 44
48	Income Taxes - Other (409.2)	-		
49	Provision for Deferred Income Taxes (410.2)	24	\$ -	\$ -
50	(Less) Provision for Deferred Income Taxes - Credit (411.2)	24		
51	Investment Tax Credit Adjustment - Net (411.5)	-		
52	(Less) Investment Tax Credits (420)	-		
53	TOTAL Taxes on Other Inc. and Ded. (Total of 46 through 52)		\$ 24	\$ 44
54	Net Other Income and Deductions (Total of lines 39,44,53)		\$ 31	\$ (37)
55	Interest Charges			
56	Interest on Long-Term Debt (427)	21	\$ 13,749	\$ 10,320
57	Amortization of Debt Discount and Expense (428)	21	\$ 239	\$ 256
58	Amortization of Loss on Reacquired Debt (428.1)	-		
59	(Less) Amortization of Premium on Debt - Credit (429)	21		
60	(Less) Amortization of Gain on Reacquired Debt - Credit (429.1)	-		
61	Interest on Debt to Associated Companies (430)	33		
62	Other Interest Expense (431)	33	\$ 11,352	\$ 10,985
63	(Less) Allowance for Borrowed Funds Used During Const.-Credit (432)	-		
64	Net Interest Charges (Total of lines 56 through 63)		\$ 25,340	\$ 21,561
65	Income Before Extraordinary Items (Total of lines 25, 54 and 64)		\$ (82,239)	\$ (62,032)
66	Extraordinary Items			
67	Extraordinary Income (434)	-		
68	(Less) Extraordinary Deductions (435)	-		
69	Net Extraordinary Items (Total of line 67 less line 68)			
70	Income Taxes - Federal and Other (409.3)	-		
71	Extraordinary Items After Taxes (Total of line 69 less line 70)			
72	Net Income (Total of lines 65 and 71)		\$ (82,239)	\$ (62,032)

STATEMENT OF RETAINED EARNINGS

- | | |
|--|---|
| <p>1. Report all changes in appropriated retained earnings, and unappropriated retained earnings for the year.</p> <p>2. Each credit and debit during the year should be identified as to the retained earnings account in which recorded (Accounts 433, 436-439 inclusive). Show the contra primary account affected in column (b).</p> <p>3. State the purpose and amount for each reservation or appropriation of retained earnings.</p> <p>4. List first Account 439, Adjustments to Retained Earnings, reflecting adjustments to the opening balance of retained earnings. Follow by credit, then debit items, in that order.</p> | <p>5. Show dividends for each class and series of capital stock.</p> <p>6. Show separately the state and federal income tax effect of items shown in account 439, Adjustments to Retained Earnings.</p> <p>7. Explain in a footnote the basis for determining the amount reserved or appropriated. If such reservations or appropriation is to be recurrent, state the number and annual amounts to be reserved or appropriated as well as the totals eventually to be accumulated.</p> <p>8. If any notes appearing in the report to stockholders are applicable to this statement attach them at page 11.</p> |
|--|---|

Line No.	Item (a)	Contra Primary Account Affected (b)	Amount (c)
UNAPPROPRIATED RETAINED EARNINGS (Account 216)			
1	Balance - Beginning of Year		\$ (244,169)
2	Changes (Identify by prescribed retained earnings accounts)		
3	Adjustments to Retained Earnings (Account 439):		
4	Credit: Treasury Stock (Rabbi Trust)		\$ (5,403)
5	Credit:		
6	TOTAL Credits to Retained Earnings (Account 439) (Total of lines 4 and 5)		\$ (5,403)
7	Debit:		
8	Debit:		
9	TOTAL Debits to Retained Earnings (Account 439) (Total of lines 7 and 8)		
10	Balance Transferred from Income (Account 433 less Account 418.1)		\$ (82,239)
11	Appropriations of Retained Earnings (Account 436) TOTAL		
12	Dividends Declared - Preferred Stock (Account 437) TOTAL		
13	Dividends Declared - Common Stock (Account 438) TOTAL		
14	Transfers from Acct. 216.1, Unappropriated Undistributed Subsidiary Earnings		
15	FAS 133 Other Comprehensive Income		
16	Balance - End of Year (Total of lines 01, 6, 9, 10, 11, 12, 13, 14 and 15)		\$ (331,810)
APPROPRIATED RETAINED EARNINGS (Account 215)			
	State balance and purpose of each appropriated retained earnings amount at end of year and give accounting entries for any applications of appropriated retained earnings during the year.		
17			
18			
19			
20			
21			
22			
23	TOTAL Appropriated Retained Earnings (Account 215)		
	TOTAL Retained Earnings (Account 215 and 216) (Total of lines 16 and 23)		\$ (331,810)

NOTES TO THE FINANCIAL STATEMENTS ON A CONSOLIDATED BASIS

1. Use the space below for important notes regarding the Balance Sheet, Statement of Income for the year, Statement of Retained Earnings for the year, and Statement of Changes in Financial Position, or any account thereof. Classify the notes according to each basic statement, providing a subheading for each statement except where a note is applicable to more than one statement.

2. Furnish particulars (details) as to any significant contingent assets or liabilities existing at end of year, including a brief explanation of any action initiated by the Internal Revenue Service involving possible assessment of additional income taxes of material amount, or of a claim for refund of income taxes of a material amount initiated by the utility. Give also a brief explanation of any dividends in arrears on cumulative preferred stock.

3. For Account 116, Utility Plant Adjustments, explain the origin of such amount, debits and credits during the year, and plan of disposition contemplated, giving references to Commission orders or other authorizations respecting classification of amounts as plant adjustments and requirements as to disposition thereof.

4. Where Accounts 189, Unamortized Loss of Reacquired Debt, are not used, give an explanation, providing the rate treatment given these items. See General Instruction 17 of the Uniform System of Accounts.

5. Give a concise explanation of any retained earnings restrictions and state the amount of retained earnings affected by such restrictions

6. If the notes to financial statements relating to the respondent company appearing in the annual report to the stockholders are applicable and furnish the data required by instructions above and on pages 8-10, such notes may be attached hereto.

Name of Respondent		For the Year Ended	
Florida Public Utilities Company - Fort Meade Division		December 31, 2019	
SUMMARY OF UTILITY PLANT AND ACCUMULATED PROVISIONS FOR DEPRECIATION, AMORTIZATION AND DEPLETION			
Line No.	Item (a)	Total (b)	Gas (c)
1	UTILITY PLANT		
2	In Service		
3	101 Plant in Service (Classified)	\$ 1,165,827	\$ 1,165,827
4	101.1 Property Under Capital Leases	\$ 1,202	\$ 1,202
5	102 Plant Purchased or Sold	\$ -	\$ -
6	106 Completed Construction not Classified	\$ -	\$ -
7	103 Experimental Plant Unclassified	\$ -	\$ -
8	104 Leased to Others	\$ -	\$ -
9	105 Held for Future Use	\$ -	\$ -
10	114 Acquisition Adjustments	\$ -	\$ -
11	TOTAL Utility Plant (Total of lines 3 through 10)	\$ 1,167,029	\$ 1,167,029
12	107 Construction Work in Progress	\$ 49,877	\$ 49,877
13	Accum. Provision for Depreciation, Amortization, & Depletion	\$ (180,131)	\$ (180,131)
14	Net Utility Plant (Total of lines 11 plus 12 less line 13)	\$ 1,036,775	\$ 1,036,775
15	DETAIL OF ACCUMULATED PROVISIONS FOR DEPRECIATION, AMORTIZATION AND DEPLETION		
16	In Service:		
17	108 Depreciation	\$ 180,131	\$ 180,131
18	111 Amort. and Depl. of Producing Nat. Gas Land & Land Rights	\$ -	\$ -
19	111 Amort. of Underground Storage Land and Land Rights	\$ -	\$ -
20	119 Amortization of Other Utility Plant	\$ -	\$ -
21	TOTAL in Service (Total of lines 17 through 20)	\$ 180,131	\$ 180,131
22	Leased to Others		
23	108 Depreciation	\$ -	\$ -
24	111 Amortization and Depletion	\$ -	\$ -
25	TOTAL Leased to Others (Total of lines 23 and 24)	\$ -	\$ -
26	Held for Future Use		
27	108 Depreciation	\$ -	\$ -
28	111 Amortization	\$ -	\$ -
29	TOTAL Held for Future Use (Enter. Tot. of lines 27 and 28)	\$ -	\$ -
30	111 Abandonment of Leases (Natural Gas)	\$ -	\$ -
31	115 Amortization of Plant Acquisition Adjustment	\$ -	\$ -
32	TOTAL Accum. Provisions (Should agree with line 13 above) (Total of lines 21, 25, 29, 30, and 31)	\$ 180,131	\$ 180,131

	A	B	C	D	E	F	G	H	I	J	K	L	M	N
1	Annual Status Report													
2	Analysis of Plant in Service Accounts													
3	Company: Florida Public Utilities Company - Fort Meade Division													
4	For the Year Ended December 31, 2019											Page 1 of 2		
5														
6	Acct.	Account		Depr.	Beginning									Ending
7	No.	Description		Rate	Balance	Additions	Retirements	Reclass.	Adjustments	Transfers	Adjustments	Transfers		Balance
8		374 Land-Distribution			\$ -	\$ -	\$ -	\$ -	\$ -	\$ -	\$ -	\$ -	\$ -	\$ -
9		389 Land-General			\$ 877	\$ 8	\$ -	\$ -	\$ -	\$ -	\$ -	\$ -	\$ -	\$ 885
10					\$ -	\$ -	\$ -	\$ -	\$ -	\$ -	\$ -	\$ -	\$ -	\$ -
11					\$ -	\$ -	\$ -	\$ -	\$ -	\$ -	\$ -	\$ -	\$ -	\$ -
12		Amortizable General Plant Assets:			\$ -	\$ -	\$ -	\$ -	\$ -	\$ -	\$ -	\$ -	\$ -	\$ -
13		303 Misc Intangible Plant		10 yrs	\$ 885	\$ 3	\$ -	\$ -	\$ -	\$ -	\$ -	\$ -	\$ -	\$ 888
14														
15	Subtotal				\$ 1,762	\$ 11	\$ -	\$ -	\$ -	\$ -	\$ -	\$ -	\$ -	\$ 1,773
16	Depreciable Assets: This schedule should identify each account/subaccount for which a separate depreciation rate has been approved by the FPSC.													
17														
18														
19		376.1 Mains (Plastic)		2.10%	\$ 95,793	\$ 65,555	\$ -	\$ -	\$ -	\$ -	\$ -	\$ -	\$ -	\$ 161,348
20		376.2 Mains (Steel)		2.20%	\$ 165,794	\$ -	\$ (1,634)	\$ -	\$ -	\$ -	\$ -	\$ -	\$ -	\$ 164,161
21		378 M & R Station Equipment - General		3.50%	\$ 1,069	\$ -	\$ -	\$ -	\$ -	\$ -	\$ -	\$ -	\$ -	\$ 1,069
22		379 M&R Stat Equipment-CGate		3.10%	\$ 162,952	\$ -	\$ -	\$ -	\$ -	\$ -	\$ -	\$ -	\$ -	\$ 162,952
23		380.1 Services Plastic		2.20%	\$ 75,028	\$ 17,040	\$ (13,967)	\$ -	\$ -	\$ -	\$ -	\$ -	\$ -	\$ 78,102
24		380.2 Services (Steel)		9.20%	\$ 100,666	\$ -	\$ (37,712)	\$ -	\$ -	\$ -	\$ -	\$ -	\$ -	\$ 62,953
25		380G Services-GRIP		2.20%	\$ 250,189	\$ 3,746	\$ -	\$ -	\$ -	\$ -	\$ -	\$ -	\$ -	\$ 253,933
26		381 Meters		3.60%	\$ 149,621	\$ 155	\$ -	\$ -	\$ -	\$ -	\$ -	\$ -	\$ -	\$ 149,776
27		382 Meter Installations		3.20%	\$ 56,059	\$ 3,280	\$ -	\$ -	\$ -	\$ -	\$ -	\$ -	\$ -	\$ 59,339
28		383 House Regulators		3.30%	\$ -	\$ -	\$ -	\$ -	\$ -	\$ -	\$ -	\$ -	\$ -	\$ -
29		385 M & R Equipment - Industrial		2.30%	\$ -	\$ -	\$ -	\$ -	\$ -	\$ -	\$ -	\$ -	\$ -	\$ -
30		387 Other Equipment		4.00%	\$ 24,376	\$ -	\$ -	\$ -	\$ -	\$ -	\$ -	\$ -	\$ -	\$ 24,376
31		390 Structures & Improvements		2.30%	\$ 334	\$ 11,545	\$ -	\$ -	\$ -	\$ -	\$ -	\$ -	\$ -	\$ 11,879
32		391 Office Furniture & Equipment		20 yrs	\$ 2,407	\$ -	\$ (1,885)	\$ -	\$ -	\$ -	\$ -	\$ -	\$ -	\$ 522
33		391.2 Computer Hardware		14 yrs	\$ 394	\$ 544	\$ (177)	\$ -	\$ -	\$ -	\$ -	\$ -	\$ -	\$ 761
34		391.3 Office Furniture		10 yrs	\$ 311	\$ -	\$ -	\$ -	\$ -	\$ -	\$ -	\$ -	\$ -	\$ 311
35		391.4 System Software		10 yrs	\$ 3,190	\$ 83	\$ -	\$ -	\$ -	\$ -	\$ -	\$ -	\$ -	\$ 3,273
36		392.1 Transportation-Autos		17.40%	\$ 311	\$ 44	\$ -	\$ (12)	\$ -	\$ -	\$ -	\$ -	\$ -	\$ 343
37		392 Transportation-Lt Truck/Van		8.40%	\$ 28,975	\$ 106	\$ -	\$ -	\$ -	\$ -	\$ -	\$ 65	\$ -	\$ 29,146
38		394 Tools, Shop & Garage Equipment		15 yrs	\$ -	\$ -	\$ -	\$ -	\$ -	\$ -	\$ -	\$ -	\$ -	\$ -
39		396 Power Operated Equipment		5.10%	\$ -	\$ -	\$ -	\$ -	\$ -	\$ -	\$ -	\$ -	\$ -	\$ -
40		397 Communication Equipment		13 yrs	\$ 375	\$ 545	\$ -	\$ -	\$ -	\$ -	\$ -	\$ -	\$ -	\$ 920
41		398 Misc Equipment		17 yrs	\$ 54	\$ -	\$ -	\$ -	\$ -	\$ -	\$ -	\$ -	\$ -	\$ 54
42		399 Other Tangible Property		5 yrs	\$ 37	\$ -	\$ -	\$ -	\$ -	\$ -	\$ -	\$ -	\$ -	\$ 37
43														
44	Subtotal				\$ 1,117,935	\$ 102,643	\$ (55,375)	\$ (12)	\$ -	\$ -	\$ -	\$ 65	\$ -	\$ 1,165,255
45														
46	Note (Consolidated with Florida Public Utilities Company Allocation of Common Plant, see pages 13.1 and 13.2 for respective depreciation rates for Chesapeake Utilites Corporation-Florida Division and Florida Public Utilities Company)													
47	Page 13													

	A	B	C	D	E	F	G	H	I	J	K	L	M	N
48	Annual Status Report													
49	Analysis of Plant in Service Accounts													
50	Company: Florida Public Utilities Company - Fort Meade Division													
51	For the Year Ended December 31, 2019											Page 2 of 2		
52														
53	Acct. No.	Account Description	Depr. Rate	Beginning Balance	Additions	Retirements	Reclass.	Adjustments	Transfers	Adjustments	Transfers	Ending Balance		
54														
55	(Continued)													
56														
57														
58														
59														
60														
61														
62														
63														
64														
65														
66														
67														
68														
69														
70														
71														
72														
73														
74														
75														
76														
77														
78														
79														
80														
81														
82														
83														
84	Capital Recovery Schedules:													
85														
86														
87														
88	List any other items necessary to reconcile the total depreciation and amortization accrual amount to Acct. 403, Depreciation Expense, shown on page 8.													
89	Total Account 101*			\$ 1,119,697	\$ 102,653	\$ (55,375)	\$ (12)	\$ -	\$ -	\$ -	\$ 65	\$ 1,167,028		
90	Amortizable Assets:													
91	114	Acquisition Adjustment		\$ -	\$ -	\$ -	\$ -	\$ -	\$ -	\$ -	\$ -	\$ -	\$ -	
92	118	Other Utility Plant		\$ -	\$ -	\$ -	\$ -	\$ -	\$ -	\$ -	\$ -	\$ -	\$ -	
93		Rounding		\$ -	\$ -	\$ -	\$ -	\$ -	\$ -	\$ -	\$ -	\$ -	\$ 1	
94														
95	Total Utility Plant			\$ 1,119,697	\$ 102,653	\$ (55,375)	\$ (12)	\$ -	\$ -	\$ -	\$ 65	\$ 1,167,029		
96														
97														
98	Note (Consolidated with Florida Public Utilities Company Allocation of Common Plant, see following pages 14.1 and 14.2 for additional details)													
99	Page 14													

	O	P	Q	R	S	T	U	V	W	X	Y	Z	AA	
1	Annual Status Report													
2	Analysis of Entries in Accumulated Depreciation & Amortization													
3	Company: Florida Public Utilities Company - Fort Meade Division													
4	For the Year Ended December 31, 2019											Page 1 of 2		
5														
6	Acct. No.	Account Description	Beginning Balance	Provision	Reclass.	Retirements	Gross Salvage	Cost of Removal	Adjustments	Transfers	Ending Balance			
7														
8	Amortizable General Plant Assets:													
9														
10														
11														
12														
13	303	Misc Intangible Plant	\$ (10)	\$ (84)	\$ -	\$ -	\$ -	\$ -	\$ (69)	\$ -	\$ (163)			
14														
15														
16	This schedule should identify each account/subaccount for which a separate depreciation rate has been approved by the FPSC.													
17														
18														
19	376.1	Mains (Plastic)	\$ (22,021)	\$ (2,638)	\$ -	\$ -	\$ -	\$ 3,027	\$ -	\$ -	\$ (21,631)			
20	376.2	Mains (Steel)	\$ (163,941)	\$ (3,632)	\$ -	\$ 1,634	\$ -	\$ -	\$ -	\$ -	\$ (165,939)			
21	378.0	M & R Equipment - General	\$ (1,069)	\$ -	\$ -	\$ -	\$ -	\$ -	\$ -	\$ -	\$ (1,069)			
22	379	M&R Stat Equipment-CGate	\$ 1,950	\$ (5,052)	\$ -	\$ -	\$ -	\$ -	\$ -	\$ -	\$ (3,102)			
23	380.1	Services Plastic	\$ (29,025)	\$ (1,657)	\$ -	\$ 13,967	\$ -	\$ 9,449	\$ -	\$ -	\$ (7,266)			
24	380.2	Services (Steel)	\$ (81,604)	\$ (7,819)	\$ -	\$ 37,712	\$ -	\$ 35,528	\$ -	\$ -	\$ (16,182)			
25	380G	Services-GRIP	\$ 89,385	\$ (5,576)	\$ -	\$ -	\$ -	\$ 4,440	\$ 11,439	\$ -	\$ 99,687			
26	381	Meters	\$ (18,012)	\$ (5,388)	\$ -	\$ -	\$ -	\$ -	\$ -	\$ -	\$ (23,400)			
27	382	Meter Installations	\$ 14,943	\$ (1,835)	\$ -	\$ -	\$ -	\$ 75	\$ -	\$ -	\$ 13,183			
28	383	House Regulators	\$ -	\$ -	\$ -	\$ -	\$ -	\$ -	\$ -	\$ -	\$ -			
29	385	M & R Equipment - Industrial	\$ -	\$ -	\$ -	\$ -	\$ -	\$ -	\$ -	\$ -	\$ -			
30	387	Other Equipment	\$ (23,962)	\$ (414)	\$ -	\$ -	\$ -	\$ -	\$ -	\$ -	\$ (24,376)			
31	390	Structures & Improvements	\$ (50)	\$ (48)	\$ -	\$ -	\$ -	\$ -	\$ -	\$ -	\$ (98)			
32	391	Office Furniture & Equipment	\$ (1,551)	\$ (42)	\$ -	\$ 1,886	\$ (27)	\$ -	\$ 98	\$ -	\$ 364			
33	391.2	Computer Hardware	\$ (44)	\$ (31)	\$ -	\$ 177	\$ -	\$ -	\$ (264)	\$ -	\$ (162)			
34	391.3	Office Furniture	\$ 500	\$ (31)	\$ -	\$ -	\$ -	\$ -	\$ 42	\$ -	\$ 511			
35	391.4	System Software	\$ (2,173)	\$ (114)	\$ -	\$ -	\$ -	\$ -	\$ 181	\$ -	\$ (2,106)			
36	392.1	Transportation-Autos	\$ (44)	\$ (59)	\$ -	\$ -	\$ -	\$ -	\$ -	\$ -	\$ (103)			
37	392.2	Transportation-L1 Truck/Van	\$ (28,206)	\$ (84)	\$ -	\$ -	\$ -	\$ -	\$ (14)	\$ -	\$ (28,304)			
38	394	Tools and Work Equipment	\$ -	\$ -	\$ -	\$ -	\$ -	\$ -	\$ -	\$ -	\$ -			
39	396	Power Operated Equipment	\$ -	\$ -	\$ -	\$ -	\$ -	\$ -	\$ -	\$ -	\$ -			
40	397	Communication Equipment	\$ (7)	\$ (33)	\$ -	\$ -	\$ -	\$ -	\$ (36)	\$ -	\$ (76)			
41	398	Misc Equipment	\$ 18	\$ (3)	\$ -	\$ -	\$ -	\$ -	\$ (10)	\$ -	\$ 5			
42	399	Other Tangible Property	\$ (38)	\$ -	\$ -	\$ -	\$ -	\$ -	\$ -	\$ -	\$ (38)			
43														
44	Subtotal Accumulated Depreciation			\$ (264,950)	\$ (34,457)	\$ -	\$ 55,376	\$ (27)	\$ 52,519	\$ 11,436	\$ -	\$ (180,103)		
45														
46	Note (Consolidated with Florida Public Utilities Company Allocation of Common Plant, see following pages 15.1 and 15.2 for additional details)													
47	Page 15													

	O	P	Q	R	S	T	U	V	W	X	Y	Z	AA
48	Annual Status Report												
49	Analysis of Entries in Accumulated Depreciation & Amortization												
50	Company: Florida Public Utilities Company - Fort Meade Division												
51	For the Year Ended December 31, 2019										Page 2 of 2		
52													
53	Acct.	Account			Beginning				Gross	Cost of			Ending
54	No.	Description			Balance	Accruals	Reclass.	Retirements	Salvage	Removal	Adjustments	Transfers	Balance
55	(Continued)												
56													
57													
58													
59													
60													
61													
62													
63													
64													
65													
66													
67													
68													
69													
70													
71													
72													
73													
74													
75													
76													
77													
78													
79													
80													
81													
82													
83													
84	Capital Recovery Schedules:												
85													
86													
87	Subtotal				\$ -	\$ -	\$ -	\$ -	\$ -	\$ -	\$ -	\$ -	\$ -
88	List any other items necessary to reconcile the total depreciation and amortization accrual amount to Acct. 403, Depreciation Expense, shown on page 8.												
89	Various				\$ -	\$ -	\$ -	\$ -	\$ -	\$ -	\$ -	\$ -	\$ -
90													
91		RWIP			\$ -	\$ -	\$ -	\$ -	\$ -	\$ 134	\$ -	\$ -	\$ 134
92													
93	Subtotal				\$ -	\$ -	\$ -	\$ -	\$ -	\$ 134	\$ -	\$ -	\$ 134
94	Grand Total				\$ (264,950)	\$ (34,541)	\$ -	\$ 55,376	\$ (27)	\$ 52,653	\$ 11,367	\$ -	\$ (180,131)
95													
96													
97													
98	Note (Consolidated with Florida Public Utilities Company Allocation of Common Plant, see following pages 16.1 and 16.2 for additional details)												
99	Page 16												

	A	B	C	D	E	F	G	H	I	J	K	L	M	N
1	Annual Status Report													
2	Analysis of Plant in Service Accounts													
3	Company: Florida Public Utilities Company - Fort Meade Division													
4	For the Year Ended December 31, 2019											Page 1 of 2		
5														
6	Acct.	Account	Depr.	Beginning										Ending
7	No.	Description	Rate	Balance	Additions	Retirements	Reclass.	Adjustments	Transfers	Adjustments	Transfers			Balance
8	374	Land-Distribution		\$ -	\$ -	\$ -	\$ -	\$ -	\$ -	\$ -	\$ -	\$ -	\$ -	\$ -
9	389	Land-General		\$ -	\$ -	\$ -	\$ -	\$ -	\$ -	\$ -	\$ -	\$ -	\$ -	\$ -
10														
11														
12	Amortizable General Plant Assets:													
13	303	Misc Intangible Plant	10 yrs	\$ 885	\$ 3	\$ -	\$ -	\$ -	\$ -	\$ -	\$ -	\$ -	\$ -	\$ 888
14	Subtotal			\$ 885	\$ 3	\$ -	\$ -	\$ -	\$ -	\$ -	\$ -	\$ -	\$ -	\$ 888
15	Depreciable Assets: This schedule should identify each account/subaccount for which a separate depreciation rate has been approved by the FPSC.													
16														
17														
18														
19	376.1	Mains (Plastic)	2.10%	\$ 95,793	\$ 65,555	\$ -	\$ -	\$ -	\$ -	\$ -	\$ -	\$ -	\$ -	\$ 161,348
20	376.2	Mains (Steel)	2.20%	\$ 165,794	\$ -	\$ (1,634)	\$ -	\$ -	\$ -	\$ -	\$ -	\$ -	\$ -	\$ 164,161
21	378.0	M & R Equipment - General	3.50%	\$ 1,069	\$ -	\$ -	\$ -	\$ -	\$ -	\$ -	\$ -	\$ -	\$ -	\$ 1,069
22	379	M&R Stat Equipment-CGate	3.10%	\$ 162,952	\$ -	\$ -	\$ -	\$ -	\$ -	\$ -	\$ -	\$ -	\$ -	\$ 162,952
23	380.1	Services Plastic	2.20%	\$ 75,028	\$ 17,040	\$ (13,967)	\$ -	\$ -	\$ -	\$ -	\$ -	\$ -	\$ -	\$ 78,102
24	380.2	Services (Steel)	9.20%	\$ 100,666	\$ -	\$ (37,712)	\$ -	\$ -	\$ -	\$ -	\$ -	\$ -	\$ -	\$ 62,953
25	380G	Services-GRIP	2.20%	\$ 250,189	\$ 3,746	\$ -	\$ -	\$ -	\$ -	\$ -	\$ -	\$ -	\$ -	\$ 253,934
26	381	Meters	3.60%	\$ 149,621	\$ 155	\$ -	\$ -	\$ -	\$ -	\$ -	\$ -	\$ -	\$ -	\$ 149,776
27	382	Meter Installations	3.20%	\$ 56,059	\$ 3,280	\$ -	\$ -	\$ -	\$ -	\$ -	\$ -	\$ -	\$ -	\$ 59,339
28	383	House Regulations	3.30%	\$ -	\$ -	\$ -	\$ -	\$ -	\$ -	\$ -	\$ -	\$ -	\$ -	\$ -
29	385	M & R Equipment - Industrial	2.30%	\$ -	\$ -	\$ -	\$ -	\$ -	\$ -	\$ -	\$ -	\$ -	\$ -	\$ -
30	387.0	Other Equipment	4.00%	\$ 24,376	\$ -	\$ -	\$ -	\$ -	\$ -	\$ -	\$ -	\$ -	\$ -	\$ 24,376
31	390	Structures & Improvements	2.30%	\$ -	\$ -	\$ -	\$ -	\$ -	\$ -	\$ -	\$ -	\$ -	\$ -	\$ -
32	391.0	Office Furniture & Equipment	20 yrs	\$ 1,213	\$ -	\$ (1,213)	\$ -	\$ -	\$ -	\$ -	\$ -	\$ -	\$ -	\$ -
33	391.2	Computer Hardware	14 yrs	\$ -	\$ -	\$ -	\$ -	\$ -	\$ -	\$ -	\$ -	\$ -	\$ -	\$ -
34	391.3	Office Furniture	10 yrs	\$ -	\$ -	\$ -	\$ -	\$ -	\$ -	\$ -	\$ -	\$ -	\$ -	\$ -
35	391.4	System Software	10 yrs	\$ -	\$ -	\$ -	\$ -	\$ -	\$ -	\$ -	\$ -	\$ -	\$ -	\$ -
36	392.1	Transportation - Autos	17.40%	\$ -	\$ -	\$ -	\$ -	\$ -	\$ -	\$ -	\$ -	\$ -	\$ -	\$ -
37	392.2	Transportation -Lt Truck/Van	8.40%	\$ 28,000	\$ -	\$ -	\$ -	\$ -	\$ -	\$ -	\$ -	\$ -	\$ -	\$ 28,000
38	394	Tools, Shop & Garage Equipment	15 yrs	\$ -	\$ -	\$ -	\$ -	\$ -	\$ -	\$ -	\$ -	\$ -	\$ -	\$ -
39	396	Power Operated Equipment	5.10%	\$ -	\$ -	\$ -	\$ -	\$ -	\$ -	\$ -	\$ -	\$ -	\$ -	\$ -
40	397	Communication Equipment	13 yrs	\$ -	\$ -	\$ -	\$ -	\$ -	\$ -	\$ -	\$ -	\$ -	\$ -	\$ -
41	398	Miscellaneous Equipment	17 yrs	\$ -	\$ -	\$ -	\$ -	\$ -	\$ -	\$ -	\$ -	\$ -	\$ -	\$ -
42	399	Other Tangible Property	5 yrs	\$ -	\$ -	\$ -	\$ -	\$ -	\$ -	\$ -	\$ -	\$ -	\$ -	\$ -
43														
44	Subtotal			\$ 1,110,761	\$ 89,776	\$ (54,526)	\$ -	\$ -	\$ -	\$ -	\$ -	\$ -	\$ -	\$ 1,146,010
45														
46	Page 13.1													
47	Florida Public Utilities Company - Fort Meade Division													

	A	B	C	D	E	F	G	H	I	J	K	L	M	N	
48	Annual Status Report														
49	Analysis of Plant in Service Accounts														
50	Company: Florida Public Utilities Company - Fort Meade Division														
51	For the Year Ended											December 31, 2019			Page 2 of 2
52															
53	Acct.	Account		Depr.	Beginning									Ending	
54	No.	Description		Rate	Balance	Additions	Retirements	Reclass.	Adjustments	Transfers	Adjustments	Transfers		Balance	
55	(Continued)														
56															
57															
58															
59															
60															
61															
62															
63															
64															
65															
66															
67															
68															
69															
70															
71															
72															
73															
74															
75															
76															
77															
78															
79															
80															
81															
82															
83															
84	Capital Recovery Schedules:														
85															
86															
87															
88															
89	Total Account 101*				\$ 1,111,646	\$ -	\$ -	\$ -	\$ -	\$ -	\$ -	\$ -	\$ -	\$ 1,146,898	
90	Amortizable Assets:														
91	114	Acquisition Adjustment												-	
92	118	Other Utility Plant													
93		Other													
94															
95	Total Utility Plant				\$ 1,111,646	\$ 89,778	\$ (54,526)	\$ -	\$ -	\$ -	\$ -	\$ -	\$ -	\$ 1,146,898	
96															
97															
98	Page 14.1														
99	Florida Public Utilities Company - Fort Meade Division														

	O	P	Q	R	S	T	U	V	W	X	Y	Z	AA
1	Annual Status Report												
2	Analysis of Entries in Accumulated Depreciation & Amortization												
3	Company Florida Public Utilities Company - Fort Meade Division												
4	For the Year Ended December 31, 2019										Page 1 of 2		
5													
6	Acct.	Account		Beginning				Gross	Cost of			Ending	
7	No.	Description		Balance	Accruals	Reclass.	Retirements	Salvage	Removal	Adjustments	Transfers	Balance	
8	Amortizable General Plant Assets:												
9													
10													
11													
12													
13	303	Misc Intangible Plant		\$ (10)	\$ (84)	\$ -	\$ -	\$ -	\$ -	\$ (69)	\$ -	\$ (163)	
14	Subtotal			\$ (10)	\$ (84)	\$ -	\$ -	\$ -	\$ -	\$ (69)	\$ -	\$ (163)	
15	This schedule should identify each account/subaccount for which a separate depreciation rate has been approved by the FPSC.												
16													
17													
18													
19	376.1	Mains (Plastic)		\$ (22,021)	\$ (2,638)	\$ -	\$ -	\$ -	\$ 3,027	\$ -	\$ -	\$ (21,631)	
20	376.2	Mains (Steel)		\$ (163,941)	\$ (3,632)	\$ -	\$ 1,634	\$ -	\$ -	\$ -	\$ -	\$ (165,939)	
21	378.0	M & R Equipment - General		\$ (1,069)	\$ -	\$ -	\$ -	\$ -	\$ -	\$ -	\$ -	\$ (1,069)	
22	379	M&R Stat Equipment-CGate		\$ 1,950	\$ (5,052)	\$ -	\$ -	\$ -	\$ -	\$ -	\$ -	\$ (3,102)	
23	380.1	Services Plastic		\$ (29,025)	\$ (1,657)	\$ -	\$ 13,967	\$ -	\$ 9,449	\$ -	\$ -	\$ (7,266)	
24	380.2	Services (Steel)		\$ (81,604)	\$ (7,819)	\$ -	\$ 37,712	\$ -	\$ 35,528	\$ -	\$ -	\$ (16,182)	
25	380G	Services-GRIP		\$ 89,385	\$ (5,576)	\$ -	\$ -	\$ -	\$ 4,440	\$ 11,439	\$ -	\$ 99,687	
26	381	Meters		\$ (18,012)	\$ (5,388)	\$ -	\$ -	\$ -	\$ -	\$ -	\$ -	\$ (23,400)	
27	382	Meter Installations		\$ 14,943	\$ (1,835)	\$ -	\$ -	\$ -	\$ 75	\$ -	\$ -	\$ 13,183	
28	383	House Regulators		\$ -	\$ -	\$ -	\$ -	\$ -	\$ -	\$ -	\$ -	\$ -	
29	385	M & R Equipment - Industrial		\$ -	\$ -	\$ -	\$ -	\$ -	\$ -	\$ -	\$ -	\$ -	
30	387.0	Other Equipment		\$ (23,962)	\$ (414)	\$ -	\$ -	\$ -	\$ -	\$ -	\$ -	\$ (24,376)	
31	390	Structures & Improvements		\$ -	\$ -	\$ -	\$ -	\$ -	\$ -	\$ -	\$ -	\$ -	
32	391.0	Office Furniture & Equipment		\$ (1,213)	\$ (10)	\$ -	\$ 1,213	\$ -	\$ -	\$ 107	\$ -	\$ 97	
33	391.2	Computer Hardware		\$ -	\$ -	\$ -	\$ -	\$ -	\$ -	\$ -	\$ -	\$ -	
34	391.3	Office Furniture		\$ -	\$ -	\$ -	\$ -	\$ -	\$ -	\$ -	\$ -	\$ -	
35	391.4	System Software		\$ -	\$ -	\$ -	\$ -	\$ -	\$ -	\$ -	\$ -	\$ -	
36	392.1	Transportation-Autos		\$ -	\$ -	\$ -	\$ -	\$ -	\$ -	\$ -	\$ -	\$ -	
37	392.2	Transportation Equip - Lt Truck/ Van		\$ (28,000)	\$ -	\$ -	\$ -	\$ -	\$ -	\$ -	\$ -	\$ (28,000)	
38	394	Tools, Shop & Garage Equipment		\$ -	\$ -	\$ -	\$ -	\$ -	\$ -	\$ -	\$ -	\$ -	
39	396	Power Operated Equipment		\$ -	\$ -	\$ -	\$ -	\$ -	\$ -	\$ -	\$ -	\$ -	
40	397	Communication Equipment		\$ -	\$ -	\$ -	\$ -	\$ -	\$ -	\$ -	\$ -	\$ -	
41	398	Miscellaneous Equipment		\$ -	\$ -	\$ -	\$ -	\$ -	\$ -	\$ -	\$ -	\$ -	
42	399.0	Other Tangible Property		\$ -	\$ -	\$ -	\$ -	\$ -	\$ -	\$ -	\$ -	\$ -	
43													
44	Subtotal			\$ (262,568)	\$ (34,021)	\$ -	\$ 54,526	\$ -	\$ 52,519	\$ 11,546	\$ -	\$ (177,999)	
45													
46	Page 15.1												
47	Florida Public Utilities Company - Fort Meade Division												

	O	P	Q	R	S	T	U	V	W	X	Y	Z	AA
48	Annual Status Report												
49	Analysis of Entries in Accumulated Depreciation & Amortization												
50	Company Florida Public Utilities Company - Fort Meade Division												
51	For the Year Ended December 31, 2019										Page 2 of 2		
52													
53	Acct.	Account	Beginning						Gross	Cost of			Ending
54	No.	Description	Balance	Accruals	Reclass.	Retirements		Salvage	Removal	Adjustments	Transfers		Balance
55	(Continued)												
56													
57													
58													
59													
60													
61													
62													
63													
64													
65													
66													
67													
68													
69													
70													
71													
72													
73													
74													
75													
76													
77													
78													
79													
80													
81													
82													
83													
84	Capital Recovery Schedules:												
85													
86													
87													
88													
89	Subtotal		-	-	-	-	-	-	-	-	-	-	-
90	List any other items necessary to reconcile the total depreciation and amortization accrual amount to Acct. 403, Depreciation Expense, shown on page 8.												
91	115	Accumulated provision for amortization	\$ -	\$ -	\$ -	\$ -	\$ -	\$ -	\$ -	\$ -	\$ -	\$ -	\$ -
92	1089	RWIP	\$ -	\$ (350)	\$ -	\$ 350	\$ -	\$ 134	\$ -	\$ -	\$ -	\$ -	\$ 134
93													
94	Subtotal		\$ -	\$ (350)	\$ -	\$ 350	\$ -	\$ 134	\$ -	\$ -	\$ -	\$ -	\$ 134
95	Grand Total		\$ (262,578)	\$ (34,455)	\$ -	\$ 54,876	\$ -	\$ 52,653	\$ 11,477	\$ -	\$ -	\$ -	\$ (178,027)
96													
97													
98	Page 16.1												
99	Florida Public Utilities Company - Fort Meade Division												

	A	B	C	D	E	F	G	H	I	J	K	L	M	N	
1	Annual Status Report														
2	Analysis of Plant in Service Accounts														
3	Company: Florida Public Utilities Company - Fort Meade Division														
4	For the Year Ended December 31, 2019											Page 1 of 2			
5															
6	Acct. No.	Account Description	Depr. Rate	Beginning Balance	Additions	Retirements	Reclass.	Gross Adjustments	Cost of Transfers	Adjustments	Transfers	Ending Balance			
7															
8	Amortizable General Plant Assets:														
9	389	Land-General		\$ 877	\$ 8	\$ -	\$ -	\$ -	\$ -	\$ -	\$ -	\$ 885			
10															
11															
12	Amortizable General Plant Assets:														
13															
14	Subtotal			\$ 877	\$ 8	\$ -	\$ -	\$ -	\$ -	\$ -	\$ -	\$ -	\$ 885		
15	Depreciable Assets: This schedule should identify each account/subaccount for which a separate depreciation rate has been approved by the FPSC.														
16															
17															
18	376.1	Mains (Plastic)	2.100%	\$ -	\$ -	\$ -	\$ -	\$ -	\$ -	\$ -	\$ -	\$ -	\$ -	\$ -	
19	376.2	Mains (Steel)	2.200%	\$ -	\$ -	\$ -	\$ -	\$ -	\$ -	\$ -	\$ -	\$ -	\$ -	\$ -	
20	378	M & R Equipment - General	3.500%	\$ -	\$ -	\$ -	\$ -	\$ -	\$ -	\$ -	\$ -	\$ -	\$ -	\$ -	
21	379	M&R Stat Equipment-CGate	3.100%	\$ -	\$ -	\$ -	\$ -	\$ -	\$ -	\$ -	\$ -	\$ -	\$ -	\$ -	
22	380.1	Services Plastic	2.200%	\$ -	\$ -	\$ -	\$ -	\$ -	\$ -	\$ -	\$ -	\$ -	\$ -	\$ -	
23															
24	381	Meters	3.600%	\$ -	\$ -	\$ -	\$ -	\$ -	\$ -	\$ -	\$ -	\$ -	\$ -	\$ -	
25	382	Meter Installations	3.200%	\$ -	\$ -	\$ -	\$ -	\$ -	\$ -	\$ -	\$ -	\$ -	\$ -	\$ -	
26	383	House Regulators	3.300%	\$ -	\$ -	\$ -	\$ -	\$ -	\$ -	\$ -	\$ -	\$ -	\$ -	\$ -	
27	385	M & R Station Equipment - Industrial	2.300%	\$ -	\$ -	\$ -	\$ -	\$ -	\$ -	\$ -	\$ -	\$ -	\$ -	\$ -	
28	390	Structures & Improvements	2.300%	\$ 334	\$ 11,545	\$ -	\$ -	\$ -	\$ -	\$ -	\$ -	\$ -	\$ 11,878	\$ -	
29	387.0	Other Equipment	4.000%	\$ -	\$ -	\$ -	\$ -	\$ -	\$ -	\$ -	\$ -	\$ -	\$ -	\$ -	
30	391.0	Office Furniture & Equipment	20 yrs	\$ 1,194	\$ -	\$ (672)	\$ -	\$ -	\$ -	\$ -	\$ -	\$ -	\$ 522	\$ -	
31	391.2	Computer Hardware	14 yrs	\$ 394	\$ 544	\$ (177)	\$ -	\$ -	\$ -	\$ -	\$ -	\$ -	\$ 761	\$ -	
32	391.3	Office Furniture	10 yrs	\$ 311	\$ -	\$ -	\$ -	\$ -	\$ -	\$ -	\$ -	\$ -	\$ 311	\$ -	
33	391.4	System Software	10 yrs	\$ 3,190	\$ 83	\$ -	\$ -	\$ -	\$ -	\$ -	\$ -	\$ -	\$ 3,273	\$ -	
34	392.1	Transportation - Autos	17.400%	\$ 311	\$ 44	\$ -	\$ (12)	\$ -	\$ -	\$ -	\$ -	\$ -	\$ 344	\$ -	
35	392.2	Transportation- Lt Truck/Van	8.400%	\$ 975	\$ 106	\$ -	\$ -	\$ -	\$ -	\$ -	\$ 65	\$ -	\$ 1,146	\$ -	
36	394	Tools, Shop & Garage Equipment	15 yrs	\$ -	\$ -	\$ -	\$ -	\$ -	\$ -	\$ -	\$ -	\$ -	\$ -	\$ -	
37	396	Power Operated Equipment	5.100%	\$ -	\$ -	\$ -	\$ -	\$ -	\$ -	\$ -	\$ -	\$ -	\$ -	\$ -	
38	397	Communication Equipment	13 yrs	\$ 375	\$ 545	\$ -	\$ -	\$ -	\$ -	\$ -	\$ -	\$ -	\$ 920	\$ -	
39	398	Miscellaneous Equipment	17 yrs	\$ 54	\$ -	\$ -	\$ -	\$ -	\$ -	\$ -	\$ -	\$ -	\$ 54	\$ -	
40	399	Other Tangible Property	5 yrs	\$ 37	\$ -	\$ -	\$ -	\$ -	\$ -	\$ -	\$ -	\$ -	\$ 37	\$ -	
41															
43	TOTAL DEPRECIABLE ASSETS			\$ 7,175	\$ 12,867	\$ (849)	\$ (12)	\$ -	\$ -	\$ -	\$ 65	\$ 19,246			
44															
45	Page 13.2														
46	Allocation of Common Plant from Florida Public Utilities Company														

	A	B	C	D	E	F	G	H	I	J	K	L	M	N	
47	Annual Status Report														
48	Analysis of Plant in Service Accounts														
49	Company: Florida Public Utilities Company - Fort Meade Division														
50	For the Year Ended December 31, 2019				Page 2 of 2					Page 2 of 2					
51															
52	Acct.	Account		Depr.	Beginning									Ending	
53	No.	Description		Rate	Balance	Additions	Retirements	Reclass.	Adjustments	Transfers	Adjustments	Transfers		Balance	
54	(Continued)														
55															
56															
57															
58															
59															
60															
61															
62															
63															
64															
65															
66															
67															
68															
69															
70															
71															
72															
73															
74															
75															
76															
77															
78															
79															
80															
81															
82															
83	Capital Recovery Schedules:														
84															
85															
86															
87															
88	Total Account 101*					\$ -	\$ -	\$ -	\$ -	\$ -	\$ -	\$ -	\$ -	\$ -	\$ 19,246
89	Amortizable Assets:														
90	114	Acquisition Adjustment			\$ -	\$ -	\$ -	\$ -	\$ -	\$ -	\$ -	\$ -	\$ -	\$ -	
91	118	Other Utility Plant			\$ -	\$ -	\$ -	\$ -	\$ -	\$ -	\$ -	\$ -	\$ -	\$ -	
92															
93															
94	Total Utility Plant					\$ 8,052	\$ 12,875	\$ (849)	\$ (12)	\$ -	\$ -	\$ -	\$ 65	\$ 20,131	
95															
96															
97	Page 14.2														
98	Allocation of Common Plant from Florida Public Utilities Company														

	O	P	Q	R	S	T	U	V	W	X	Y	Z	AA
1	Annual Status Report												
2	Analysis of Entries in Accumulated Depreciation & Amortization												
3	Company: Florida Public Utilities Company - Fort Meade Division												
4	For the Year Ended December 31, 2019											Page 1 of 2	
5													
6	Acct. No.	Account Description	Beginning Balance	Provision	Reclass.	Retirements	Gross Salvage	Cost of Removal	Adjustments	Transfers	Ending Balance		
7													
8	Amortizable General Plant Assets:												
9	389	Land-General	\$ -	\$ -	\$ -	\$ -	\$ -	\$ -	\$ -	\$ -	\$ -	\$ -	\$ -
10													
11													
12													
13													
14	\$ - \$ - \$ - \$ - \$ - \$ - \$ - \$ - \$ - \$ - \$ -												
15	This schedule should identify each account/subaccount for which a separate depreciation rate has been approved by the FPSC.												
16													
17													
18	376.1	Mains (Plastic)	\$ -	\$ -	\$ -	\$ -	\$ -	\$ -	\$ -	\$ -	\$ -	\$ -	\$ -
19	376.2	Mains (Steel)	\$ -	\$ -	\$ -	\$ -	\$ -	\$ -	\$ -	\$ -	\$ -	\$ -	\$ -
20	378.0	M & R Equipment - General	\$ -	\$ -	\$ -	\$ -	\$ -	\$ -	\$ -	\$ -	\$ -	\$ -	\$ -
21	379	M&R Stat Equipment-CGate	\$ -	\$ -	\$ -	\$ -	\$ -	\$ -	\$ -	\$ -	\$ -	\$ -	\$ -
22	380.1	Services Plastic	\$ -	\$ -	\$ -	\$ -	\$ -	\$ -	\$ -	\$ -	\$ -	\$ -	\$ -
23													
24	381	Meters	\$ -	\$ -	\$ -	\$ -	\$ -	\$ -	\$ -	\$ -	\$ -	\$ -	\$ -
25	382	Meter Installations	\$ -	\$ -	\$ -	\$ -	\$ -	\$ -	\$ -	\$ -	\$ -	\$ -	\$ -
26	383	House Regulators	\$ -	\$ -	\$ -	\$ -	\$ -	\$ -	\$ -	\$ -	\$ -	\$ -	\$ -
27	385	M & R Station Equipment - Industrial	\$ -	\$ -	\$ -	\$ -	\$ -	\$ -	\$ -	\$ -	\$ -	\$ -	\$ -
28	390	Structures & Improvements	\$ (50)	\$ (48)	\$ -	\$ -	\$ -	\$ -	\$ -	\$ -	\$ -	\$ -	\$ (98)
29	387.0	Other Equipment	\$ -	\$ -	\$ -	\$ -	\$ -	\$ -	\$ -	\$ -	\$ -	\$ -	\$ -
30	391.0	Data Processing Equipment	\$ (338)	\$ (32)	\$ -	\$ 673	\$ (27)	\$ -	\$ (9)	\$ -	\$ -	\$ -	\$ 267
31	391.2	Computer Hardware	\$ (44)	\$ (31)	\$ -	\$ 177	\$ -	\$ -	\$ (264)	\$ -	\$ -	\$ -	\$ (162)
32	391.3	Office Furniture	\$ 500	\$ (31)	\$ -	\$ -	\$ -	\$ -	\$ 42	\$ -	\$ -	\$ -	\$ 511
33	391.4	System Software	\$ (2,173)	\$ (114)	\$ -	\$ -	\$ -	\$ -	\$ 181	\$ -	\$ -	\$ -	\$ (2,106)
34	392.1	Transportation - Autos	\$ (44)	\$ (59)	\$ -	\$ -	\$ -	\$ -	\$ -	\$ -	\$ -	\$ -	\$ (103)
35	392.2	Transportation-Autos	\$ (206)	\$ (84)	\$ -	\$ -	\$ -	\$ -	\$ (14)	\$ -	\$ -	\$ -	\$ (304)
36	394	Tools, Shop & Garage Equipment	\$ -	\$ -	\$ -	\$ -	\$ -	\$ -	\$ -	\$ -	\$ -	\$ -	\$ -
37	396	Power Operated Equipment	\$ -	\$ -	\$ -	\$ -	\$ -	\$ -	\$ -	\$ -	\$ -	\$ -	\$ -
38	397	Communication Equipment	\$ (7)	\$ (33)	\$ -	\$ -	\$ -	\$ -	\$ (36)	\$ -	\$ -	\$ -	\$ (76)
39	398	Miscellaneous Equipment	\$ 18	\$ (3)	\$ -	\$ -	\$ -	\$ -	\$ (10)	\$ -	\$ -	\$ -	\$ 5
40	399	Other Tangible Property	\$ (38)	\$ -	\$ -	\$ -	\$ -	\$ -	\$ -	\$ -	\$ -	\$ -	\$ (38)
41													
43	SUBTOTAL ACCUMULATED DEPRECIATION		\$ (2,382)	\$ (435)	\$ -	\$ 850	\$ (27)	\$ -	\$ (110)	\$ -	\$ -	\$ (2,104)	
44													
45	Page 15.2												
46	Allocation of Common Plant from Florida Public Utilities Company												

	O	P	Q	R	S	T	U	V	W	X	Y	Z	AA
47	Annual Status Report												
48	Analysis of Entries in Accumulated Depreciation & Amortization												
49	Company: Florida Public Utilities Company - Fort Meade Division												
50	For the Year Ended December 31, 2019										Page 2 of 2		
51													
52	Acct. No.	Account Description	Beginning Balance	Accruals	Reclass.	Retirements	Gross Salvage	Cost of Removal	Adjustments	Transfers	Ending Balance		
53													
54	(Continued)												
55													
56													
57													
58													
59													
60													
61													
62													
63													
64													
65													
66													
67													
68													
69													
70													
71													
72													
73													
74													
75													
76													
77													
78													
79													
80													
81													
82													
83	Capital Recovery Schedules:												
84													
85													
86													
87													
88	Subtotal			\$ -	\$ -	\$ -	\$ -	\$ -	\$ -	\$ -	\$ -	\$ -	\$ -
89	List any other items necessary to reconcile the total depreciation and amortization accrual amount to Acct. 403, Depreciation Expense, shown on page 8.												
90													
91													
92													
93	Subtotal			\$ -	\$ -	\$ -	\$ -	\$ -	\$ -	\$ -	\$ -	\$ -	\$ -
94	Grand Total			\$ (2,382)	\$ (435)	\$ -	\$ 850	\$ (27)	\$ -	\$ (110)	\$ -	\$ (2,104)	
95													
96													
97	Page 16.2												
98	Allocation of Common Plant from Florida Public Utilities Company												

Name of Respondent Florida Public Utilities Company - Fort Meade Division		For the Year Ended December 31, 2019	
CONSTRUCTION WORK IN PROGRESS-GAS (Account 107)			
1. Report below descriptions and balances at end of year of projects in process of construction (107). 2. Show items relating to "research, development, and demonstration" projects last, under a caption Research,		Development, and Demonstration (see Account 107 of the Uniform System of Accounts). 3. Minor projects (less than \$500,000) may be grouped.	
Line No.	Description of Project (a)	Construction Work in Progress-Gas (Account 107) (b)	Estimated Additional Cost of Project (c)
1	Miscellaneous	\$ 49,877	N/A
2			
3			
4			
5			
6			
7			
8			
9			
10			
11			
12			
13			
14			
15	TOTAL	\$ 49,877	\$ -

CONSTRUCTION OVERHEADS-GAS			
1. List in column (a) the kinds of overheads according to the titles used by the respondent. Charges for outside professional services for engineering fees and management or supervision fees capitalized should be shown as separate items. 2. A respondent should not report "none" to this page if no overhead apportionments are made, but rather should explain the accounting procedures employed		and the amounts of engineering, supervision, and administrative costs, etc. which are directly charged to construction. 3. Enter on this page engineering, supervision, administrative,, and allowance for funds used during construction, etc. which are first assigned to a blanket work order and then prorated to construction jobs.	
Line No.	Description of Overhead (a)	Total Amount Charged for the Year (b)	Total Cost of Construction to Which Overheads Were Charged (Exclusive of Overhead Charges) (c)
1	Not Applicable		
2			
3			
4			
5			
6			
7			
8			
9			
10			
11			
12	TOTAL	-	

PREPAYMENTS (Account 165)

1. Report below the particulars (details) on each prepayment.

Line No.	Nature of Prepayment (a)	Balance at End of Year (In Dollars) (b)
1	Prepaid Insurance	\$ 3,184
2	Prepaid Maintenance	\$ 147
3	Miscellaneous Prepayments	\$ 184
4		
5		
6		
7		
8	TOTAL	\$ 3,515

EXTRAORDINARY PROPERTY LOSSES (Account 182.1)

Line No.	Description of Extraordinary Loss [Include in the description the date of loss, the date of Commission authorization to use Account 182.1 and period of amortization (mo, yr, to mo, yr).] (a)	Total Amount of Loss (b)	Losses Recognized During Year (c)	WRITTEN OFF DURING YEAR		Balance at End of Year (f)
				Account Charged (d)	Amount (e)	
1	N/A					
2						
3						
4						
5						
6						
7						
8						
9						
10		TOTAL				

UNRECOVERED PLANT AND REGULATORY STUDY COSTS (182.2)

Line No.	Description of Unrecovered Plant and Regulatory Study Costs [Include in the description of costs, the date of Commission authorization to use Account 182.2 and period of amortization (mo, yr, to mo, yr).] (a)	Total Amount of Charges (b)	Costs Recognized During Year (c)	WRITTEN OFF DURING YEAR		Balance at End of Year (f)
				Account Charged (d)	Amount (e)	
1	N/A					
2						
3						
4						
5						
6						
7						
8						
9						
10						
11						
12						
13	TOTAL					

OTHER REGULATORY ASSETS (Account 182.3)

1. Reporting below the particulars (details) called for concerning other regulatory assets which are created through the ratemaking actions of regulatory agencies (and not includible in other amounts).	2. For regulatory assets being amortized, show period of amortization in column (a). 3. Minor items (amounts less than \$25,000) may be grouped by classes.
---	--

Line No.	Description and Purpose of Other Regulatory Assets (a)	Balance Beginning of Year (b)	Debits (c)	Credits		Balance End of Year (f)
				Account Charged (d)	Amounts (e)	
1	Not Applicable					
2						
3						
4						
5						
6						
7						
8						
9						
10						
11						
12						
13						
14						
15						
16						
17	TOTAL	\$ -	\$ -			\$ -

MISCELLANEOUS DEFERRED DEBITS (Account 186)

1. Report below the particulars (details) called for concerning miscellaneous deferred debits. 2. For any deferred debit being amortized, show period of amortization in column (a).	3. Minor items (amounts less than \$25,000) may be grouped by classes.
---	--

Line No.	Description of Miscellaneous Deferred Debit (a)	Balance Beginning of Year (b)	Debits (c)	Credits		Balance End of Year (f)
				Account Charged (d)	Amount (e)	
1	Goodwill	\$ 713,930	\$ 113,682	186.9	\$ (113,682)	\$ 713,930
2	GRIP Over Under Recovery	\$ 6,191	\$ 5,380	186.G	\$ (11,570)	\$ 1
3	Conservation	\$ -	\$ 4,379.73	186	\$ (2,895.43)	\$ 1,484
4						
5						
6						
7						
8						
9						
10						
11						
12						
13						
14						
15	Misc. Work in Progress					
16	Deferred Regulatory Comm. Expenses					
17	TOTAL	\$ 720,121	\$ 123,442		\$ (128,147)	\$ 715,415

**SECURITIES ISSUED AND
 SECURITIES REFUNDED OR RETIRED DURING THE YEAR**

1. Furnish a supplemental statement giving a brief description of security financing and refinancing transactions during the year and the accounting for the securities, discounts, premiums, expenses, and related gains or losses.

2. Furnish particulars (details) showing fully the accounting for the total principal amount, par value, or stated value of each class and series of security issued, retired, or refunded and the accounting for premiums, discounts, expenses, and gains or losses relating to the securities. Set forth the facts of the accounting clearly with regard to redemption premiums, unamortized discounts, expenses, and gains or losses relating to securities retired or refunded.

3. Included in the identification of each class and series of security, as appropriate, the interest or dividend rate, nominal date of issuance, maturity date, aggregate principal amount, par value or stated value, and number of shares.

4. Where the accounting for amounts relating to securities refunded or retired is other than that specified in General Instruction 17 of the Uniform System of Accounts, give references to the Commission authorization for the different accounting and state the accounting method.

Not Applicable

UNAMORTIZED LOSS AND GAIN ON REACQUIRED DEBT (Accounts 189, 257)

1. Report under separate subheadings for Unamortized Loss and Unamortized Gain on Recquired Debt, particulars (details) of gain and loss, including maturity date, on reacquisition applicable to each class and series of long-term debt. If gain or loss resulted from a refunding transaction, include also the maturity date of the new issue.

2. In column (c) show the principal amount of bonds or other long-term debt reacquired.

3. In column (d) show the net gain or net loss realized on each debt reacquisition as computed in accordance with General Instruction 17 of the Uniform Systems of Accounts

4. Show loss amounts by enclosing the figures in parentheses.

5. Explain in a footnote any debits and credits other than amortization debited to Account 428.1, Amortization of Loss on Recquired Debt, or credited to Account 429.1, Amortization of Gain on Recquired Debt-Credit.

Line No.	Designation of Long-Term Debt (a)	Date Reacquired (b)	Principal of Debt Reacquired (c)	Net Gain or Net Loss (d)	Balance at Beginning of Year (e)	Balance at End of Year (f)
1	Not Applicable					
2						
3						
4						
5						
6						
7						
8						
9						
10						
11						
12						
13						

LONG-TERM DEBT (Accounts 221, 222, 223, and 224)

1. Report by balance sheet Account the particulars (details) concerning long-term debt included in Accounts 221, Bonds, 222, Reacquired Bonds, 223, Advances from Associated Companies, and 224, Other Long-Term Debt. If information to meet the stock exchange reporting requirement outlined in column (a) is available from the SEC 10-K Report Form Filing, a specific reference to the report form (i.e., year and company title) may be reported in column (a) provided the fiscal years for both the 10-K report and this report are compatible.

2. For advances from Associated Companies, report separately advances on notes and advances on open accounts. Designate demand notes as such. Include in column (a) names of associated companies from which advances were received.

3. If the respondent has any long-term securities which have been nominally issued and are nominally outstanding at end of year, describe such securities in a footnote.

4. If interest expense was incurred during the year on any obligations retired or reacquired before end of year, include such interest in column (f). Explain in a footnote any difference between the total of column (f) and the total of Account 427, Interest on Long-Term Debt and Account 430, Interest on Debt to Associated Companies.

Line No.	Class and Series of Obligation (a)	Nominal Date of Issue (b)	Date of Maturity (c)	Original Amount Issued (d)	Interest for Year		Total Amount Outstanding (g)
					Rate (in %) (e)	Amount (f)	
1	Unamortized Issuance Costs (DRP)						
2	Senior Note 5 - 6.64%	10/31/2002	10/31/2017	\$ 30,000,000	6.64%	\$ -	\$ -
3	Senior Note 6 - 5.5%	12/12/2006	10/12/2020	\$ 20,000,000	5.50%	\$ 195,861	\$ 2,000,000
4	Senior Note 7 - 5.93%	10/31/2008	10/31/2023	\$ 30,000,000	5.93%	\$ 815,375	\$ 12,000,000
5	Senior Note 8 - 5.68%	6/24/2011	6/30/2026	\$ 29,000,000	5.68%	\$ 1,235,400	\$ 20,300,000
6	Senior Note 9 - 6.43%	5/2/2013	5/2/2028	\$ 7,000,000	6.43%	\$ 420,093	\$ 6,300,000
7	Senior Note 10 - 3.73%	12/16/2013	12/16/2028	\$ 20,000,000	3.73%	\$ 742,892	\$ 18,000,000
8	Senior Note 11 - 3.88%	5/15/2014	5/15/2029	\$ 50,000,000	3.88%	\$ 1,940,000	\$ 50,000,000
9	Senior Note 12 - 3.25%	4/21/2017	4/30/2032	\$ 70,000,000	3.25%	\$ 2,275,000	\$ 70,000,000
10	Senior Note 16 - 2.98%	12/20/2019	12/20/2034	\$ 70,000,000	2.98%	\$ 57,944	\$ 70,000,000
11	Tranche 1	5/1/2018	5/31/2038	\$ 50,000,000	3.48%	\$ 1,740,000	\$ 50,000,000
12	Tranche 2	11/1/2018	11/1/2038	\$ 50,000,000	3.58%	\$ 1,819,833	\$ 50,000,000
13	Tranche 3	8/1/2019	8/1/2039	\$ 100,000,000	3.98%	\$ 1,536,722	\$ 100,000,000
14	Promissory Note	2/1/2010	3/1/2015	\$ 310,000	0.00%	\$ -	\$ -
15	Interim Term Note 1	12/21/2018	1/21/2020	\$ 30,000,000		\$ 921,272	\$ -
16	Interim Term Note 2	1/31/2019	2/28/2020	\$ 30,000,000		\$ 838,320	\$ 30,000,000
17	FPU Bond - 9.08%	6/1/1992	6/1/2022	\$ 8,000,000	9.08%	\$ 726,400	\$ 8,000,000
18	Shelf Facility-Prudential	10/8/2015	10/8/2030				
19	Shelf Facility-Met Life	3/2/2017	3/2/2032				
20	Shelf Facility-New York Life	3/2/2017	5/31/2038				
21	Bank Credit Facility (Annual)	10/8/2018	10/8/2019				
22	Bank Credit Facility (Annual)	10/8/2019	10/8/2020				
23	Bank Credit Facility (Five Years)	10/8/2015	10/8/2020				
24							
25							
26	Subtotal					\$ 15,265,113	\$ 486,600,000
27	Less Maturities						\$ (45,600,000)
28							
29	Allocation to Florida Division					\$ 13,749	
30	Allocation to Other Jurisdictions					\$ 15,251,364	
31							
32	Total Chesapeake Utilities Corp.					\$ 15,265,113	
33	TOTAL			\$ 594,310,000		\$ 15,265,113	\$ 441,000,000

Note: Schedule lists total long term debt for Chesapeake Utilities Corporation. Line number 29 indicates the amount that is allocated to the Florida Division.

UNAMORTIZED DEBT EXPENSE, PREMIUM AND DISCOUNT ON LONG-TERM DEBT (Accounts 181, 225, 226)

1. Report under separate subheadings for Unamortized Debt Expense, Unamortized Premium on Long-Term Debt and Unamortized Discount on Long-Term Debt, particulars (details) of expense, premium or discount applicable to each class and series of long-term debt.

2. Show premium amounts by enclosing the figures in parentheses.

3. In column (b) show the principal amount of bonds or other long-term debt originally issued.

4. In column (c) show the expense, premium or discount with respect to the amount of bonds or other long-term debt originally issued.

5. Furnish in a footnote particulars (details) regarding the treatment of unamortized debt expense, premium or discount associated with issues redeemed during the year.

6. Identify separately indispensed amounts applicable to issues which were redeemed in prior years.

7. Explain any debits and credits other than amortization debited to Account 428, Amortization of Debt Discount and Expense, or credited to Account 429, Amortization of Premium on Debt - Credit.

Line No.	Designation of Long-Term Debt (a)	Principal Amount of Debt issued (b)	Total Expense Premium or Discount (c)	Amortization Period		Balance at beginning of Year (f)	Debits (Credits) During Year (g)	Balance at End of Year (h)
				Date From (d)	Date To (e)			
1	Unamortized Issuance Costs (DRP)		\$ 131,808			\$ 20,928	\$ (2,757)	\$ 18,171
2	Senior Note 5 - 6.64%	\$ 30,000,000	\$ 141,831	10/31/2002	10/31/2017	\$ -	\$ -	\$ -
3	Senior Note 6 - 5.5%	\$ 20,000,000	\$ 79,566	12/12/2006	10/12/2020	\$ 2,094	\$ (1,466)	\$ 628
4	Senior Note 7 - 5.93%	\$ 30,000,000	\$ 39,518	10/31/2008	10/31/2023	\$ 5,217	\$ (1,802)	\$ 3,415
5	Senior Note 8 - 5.68%	\$ 29,000,000	\$ 34,794	6/24/2011	6/30/2026	\$ 10,467	\$ (2,477)	\$ 7,990
6	Senior Note 9 - 6.43%	\$ 7,000,000	\$ 12,789	5/2/2013	5/2/2028	\$ 5,933	\$ (1,146)	\$ 4,787
7	Senior Note 10 - 3.73%	\$ 20,000,000	\$ 68,794	12/16/2013	12/16/2028	\$ 35,773	\$ (6,549)	\$ 29,224
8	Senior Note 11 - 3.88%	\$ 50,000,000	\$ 192,790	5/15/2014	5/15/2029	\$ 107,962	\$ (18,508)	\$ 89,454
9	Senior Note 12 - 3.25%	\$ 70,000,000	\$ 150,539	4/21/2017	4/30/2032	\$ 125,759	\$ (14,868)	\$ 110,891
10	Senior Note 16 - 2.98%	\$ 70,000,000	\$ 152,706	12/20/2019	12/20/2034	\$ -	\$ 152,706	\$ 152,706
11	Tranche 1	\$ 50,000,000	\$ 99,400	5/1/2018	5/31/2038	\$ 95,659	\$ (6,413)	\$ 89,246
12	Tranche 2	\$ 50,000,000	\$ 76,938	11/1/2018	11/1/2038	\$ 76,524	\$ 11,922	\$ 88,446
13	Tranche 3	\$ 100,000,000	\$ 12,164	8/1/2019	8/1/2039	\$ 12,164	\$ 152,190	\$ 164,354
14	Promissory Note	\$ 310,000				\$ -	\$ -	\$ -
15	Interim Term Note 1	\$ 30,000,000	\$ 8,996	12/21/2018	1/21/2020	\$ 5,000	\$ (4,308)	\$ 692
16	Interim Term Note 2	\$ 30,000,000	\$ 21,786	1/31/2019	2/28/2020	\$ -	\$ 3,352	\$ 3,352
17	FPU Bond - 9.08%	\$ 8,000,000	\$ 122,010			\$ 13,895	\$ (4,067)	\$ 9,828
18	Shelf Facility-Prudential	\$ -	\$ 58,133	10/8/2015	10/8/2030	\$ 45,543	\$ (3,876)	\$ 41,667
19	Shelf Facility-Met Life	\$ -	\$ 34,250			\$ 30,400	\$ (2,280)	\$ 28,120
20	Shelf Facility-New York Life	\$ -	\$ 8,636			\$ 7,680	\$ (576)	\$ 7,104
21	Bank Credit Facility (Annual)	\$ -	\$ 21,500	10/8/2018	10/8/2019	\$ 16,128	\$ (16,128)	\$ -
22	Bank Credit Facility (Annual)	\$ -	\$ 21,500	10/8/2019	10/8/2020	\$ -	\$ -	\$ -
23	Bank Credit Facility (Five Years)	\$ -	\$ 466,119	10/8/2015	10/8/2020	\$ 163,149	\$ (98,600)	\$ 64,549
24								
25								
26								
27	Allocation to: Florida Division						\$ 239	
28	Allocation to Other Jurisdictions						\$ 134,110	
29								
30	Total Chesapeake Utilities Corp.						\$ 134,349	

Note: Schedule lists total long term debt for Chesapeake Utilities Corporation. Line number 27 indicates the amount that is allocated to the Fort Meade.

MISCELLANEOUS CURRENT AND ACCRUED LIABILITIES (Account 242)

1. Describe and report the amount of other current and accrued liabilities at the end of year.		2. Minor items (less than \$50,000) may be grouped under appropriate title.	
Line No.	Item	Balance at End of Year	
1	Accrued Payroll	\$	2,336
2	Accrued PTO	\$	680
3	Accrued Bonus	\$	4,296
4	Accrued Severance	\$	28
5			
6			
7			
8			
9			
10			
11			
12			
13	TOTAL	\$	7,340

OTHER DEFERRED CREDITS (Account 253)

1. Report below the particulars (details) called for concerning other deferred credits.		2. For any deferred credit being amortized, show the period of amortization.		3. Minor Items (less than \$25,000) may be grouped by classes.		
Line No.	Description of Other Deferred Credit (a)	Balance Beginning of Year (b)	DEBITS		Credits (e)	Balance End of Year (f)
			Contra Account (c)	Amount (d)		
1	Conservation Cost Recovery	\$ 2,844		\$ (18,548)	\$ 15,704	\$ -
2	Gas Reliability Infrastructure Program (GRIP)	\$ -		\$ (599)	\$ 2,717	\$ 2,118
3	Reserve for Refund	\$ (16,931)		\$ (1,841)	\$ 18,772	\$ -
4						
5						
6						
7						
8						
9						
10						
11						
12						
13	TOTAL	\$ (14,087)		(20,988)	37,193	\$ 2,118

OTHER REGULATORY LIABILITIES (Account 254)

1. Reporting below the particulars (details) called for concerning other regulatory liabilities which are created through the ratemaking actions of regulatory agencies (and not includable in other amounts).		2. For regulatory liabilities being amortized, show period of amortization in column (a).		3. Minor items (5% of the Balance at End of Year for Account 254 or amounts less than \$50,000, whichever is less) may be grouped by classes.		
Line No.	Description and Purpose of Other Regulatory Liabilities (a)	Balance Beginning of Year (b)	Debits		Credits (d)	Balance End of Year (e)
			Contra Account (b)	Amount (c)		
1	Regulatory Liability Tax Rate Change - Othr Reg Liab-Not Protected	\$ 50,961		\$ (10,435)	\$ 613	\$ 41,139
2	Regulatory Liability Tax Rate Change - Othr Reg Liab-Protected	\$ 46,451		\$ (2,128)	\$ 199	\$ 44,522
3						
4						
5						
6						
7						
8						
9						
10						
11						
12						
13	TOTAL	\$ 97,412		(12,563)	\$ 812	\$ 85,661

TAXES OTHER THAN INCOME TAXES (Account 408.1)											
	Name of Taxing Authority	Real Property	Tangible Personal Property	Intangible Personal Property	FICA, SUTA, FUTA	Gross Receipts	Regulatory Assessment Fees	Environmental, Excise	Franchise	Other*	Total
1	Payroll Taxes				\$ 5,285						\$ 5,285
2	Polk County		\$ 15,079								\$ 15,079
3	Florida Public Service Commission						\$ 1,694				\$ 1,694
4	Other					\$ 6,655					\$ 6,655
5	Franchise Tax								\$ 15,660		\$ 15,660
6											\$ -
7											\$ -
8											\$ -
9											\$ -
10											\$ -
11											\$ -
12											\$ -
13											\$ -
14											\$ -
15	Less: Charged to Construction										\$ -
16	TOTAL Taxes Charged During Year (Lines 1-15) to Account 408.1	\$ -	\$ 15,079	\$ -	\$ 5,285	\$ 6,655	\$ 1,694	\$ -	\$ 15,660	\$ -	\$ 44,374

Note: *List separately each item in excess of \$500.

ACCUMULATED DEFERRED INVESTMENT TAX CREDITS (Account 255)								
Report below the information applicable to Account 255. Where appropriate, segregate the balances and transactions by utility and nonutility operations. Explain by footnote any correction adjustment to the account balance shown in column (f).								
Line No.	Account Subdivisions (a)	Balance Beginning of Year (b)	Amount Deferred for Year (c)	Allocations to Current Year's Income		Adjustments (f)	Balance End of Year (g)	Average Period of Allocation to Income (h)
				Acct. No. (d)	Amount (e)			
1	Not Applicable							
2								
3								
4								
5								
6								
7								
8								
9								
10	TOTAL							

Notes

ACCUMULATED DEFERRED INCOME TAXES (Account 190)

1. At Other (Specify), include deferrals relating to other income and deductions.

2. In the space provided below, identify by amount and classification, significant items for which deferred taxes are being provided.

Line No.	Balance at Beginning of Year	Changes During Year				Adjustments				Balance at End of Year	
		Amounts Debited to Account 410.1	Amounts Credited to Account 411.1	Amounts Debited to Account 410.2	Amounts Credited to Account 411.2	Debits		Credits			
						Account No.	Amount	Account No.	Amount		
1										\$ -	
2	Bad Debts	\$ 222		\$ 107							\$ 329
3	Short Term Bonus (IPP)	\$ 2,395				280	\$ (2,395)				\$ -
4	Conservation	\$ 721				280	\$ (1,097)	283	\$ 376		\$ -
5	Purchased Gas	\$ 4,557				280	\$ (4,557)				\$ -
6	Excessed Deferrals-Tax Reform										\$ -
7	Rabbi Trust	\$ 1,369				280	\$ (1,369)				\$ -
8	SERP	\$ 3,063				280	\$ (3,063)				\$ -
9	Tax Reform			50			\$ (50)				\$ -
10											\$ -
11	TOTAL Gas (Lines 2 - 10)	\$ 12,327	\$ -	\$ 157	\$ -	\$ -	\$ (12,531)		\$ 376		\$ 329
12	Other (Specify)										\$ -
13	TOTAL (Account 190) (Total of lines 11 and 12)	\$ 12,327	\$ -	\$ 157	\$ -	\$ -	\$ (12,531)	\$ -	\$ 376		\$ 329

ACCUMULATED DEFERRED INCOME TAXES (Accounts 281, 282, 283)

Line No.	Balance at Beginning of Year	Changes During Year				Adjustments				Balance at End of Year	
		Amounts Debited to Account 410.1	Amounts Credited to Account 411.1	Amounts Debited to Account 410.2	Amounts Credited to Account 411.2	Debits		Credits			
						Account No.	Amount	Account No.	Amount		
1	Account 281 - Accelerated Amortization Property										\$ -
2	Electric										\$ -
3	Gas										\$ -
4	Other										\$ -
5	TOTAL Account 281 (Lines 2 thru 4)	\$ -	\$ -	\$ -	\$ -	\$ -	\$ -	\$ -	\$ -		\$ -
6	Account 282 - Other Property										\$ -
7	Electric										\$ -
8	Gas	\$ (69,627)	\$ (19,679)	\$ 3,073		280	\$ 199		\$ -		\$ (86,034)
9	Other										\$ -
10	TOTAL Account 282 (Lines 7 thru 9)	\$ (69,627)	\$ (19,679)	\$ 3,073	\$ -	\$ -	\$ 199		\$ -		\$ (86,034)
11	Account 283 - Other										\$ -
12	Electric										\$ -
13	Gas	\$ (103,584)	\$ (26,677)	\$ 13	\$ -	\$ -	190	\$ (376)	283	\$ 5,654	\$ (124,970)
14	Other										\$ -
15	TOTAL Account 283 - Other (Lines 12 thru 14)	\$ (103,584)	\$ (26,677)	\$ 13	\$ -	\$ -	\$ (376)		\$ 5,654		\$ (124,970)
16	GAS										\$ -
17	Federal Income Tax	\$ (135,623)	(36,297)	2,416	-		(139)		4,427		\$ (165,216)
18	State Income Tax	\$ (37,588)	(10,059)	370	-		(38)		1,227		\$ (46,088)
19											\$ -
20	TOTAL Gas (Lines 17 thru 19)	\$ (173,211)	\$ (46,356)	\$ 2,786	\$ -	\$ -	\$ (177)		\$ 5,654		\$ (211,304)
21	OTHER										\$ -
22	Federal Income Tax										\$ -
23	State Income Tax										\$ -
24	TOTAL Other (Lines 22 and 23)		\$ -	\$ -	\$ -	\$ -	\$ -		\$ -		\$ -
25	TOTAL (Total of lines 5, 10 and 15)	\$ (173,211)	\$ (46,356)	\$ 3,086	\$ -	\$ -	\$ (177)		\$ 5,654		\$ (211,004)

**RECONCILIATION OF REPORTED NET INCOME WITH TAXABLE INCOME
FOR FEDERAL INCOME TAXES**

1. Report the reconciliation of reported net income for the year with taxable income used in computing Federal income tax accruals and show computation of such tax accruals. Include in the reconciliation, as far as practicable, the same detail as furnished on Schedule M-1 of the tax return for the year. Submit a reconciliation even though there is no taxable income for the year. Indicate clearly the nature of each reconciling amount.

2. If the utility is a member of a group which files a consolidated Federal tax return, reconcile reported net income with taxable net income as if a separate return were to be filed, indicating, however, intercompany amounts to be eliminated in such a consolidated return. State names of group members, tax assigned to each group member, and basis of allocation, allocation, assignment, or sharing of the consolidated tax among the group members.

Line No.	Particulars (Details) (a)	Amount (b)
1	Net Income for the Year (Page 9)	\$ (82,239)
2	Income on Return Not on Books	
3	Expenses Booked Not Recorded on Return	
4	Current Federal Income Taxes	\$ (46,454)
5	Deferred Income Taxes	\$ 43,113
6	Meals	\$ 851
7	25SI.01: Self Insurance (Current)	\$ 423
8	25RE: Repairs Deduction	\$ 45
9		
10		
11		
12		
13		
14	Deductions on Return Not Charged Against Book Income	
15	25ID: Reserve for Insurance Deductibles	
16	25BD: Bad Debts	\$ (1,702)
17	25CN: Conservation	\$ (1,978)
18	25DP.04: Asset Gain/Loss	\$ (2,199)
19	25DP.01: Depreciation	\$ (4,328)
20	25AM: Customer Based Intangibles	\$ (47,595)
21	25DP.03: Cost of Removal	\$ (52,519)
22		
23		
24		
25		
26		
27	Federal Tax Net Income	\$ (194,582)
28	Show Computation of Tax:	
29	Tax at 21%	\$ (40,862)
30	Reversal of Prior Year benefit from NOL generated by other Subsidiaries	\$ (5,592)
31	Total Federal Income Tax Payable	\$ (46,454)

GAS OPERATING REVENUES (Account 400)

1. Report below natural gas operating revenues for each prescribed account in total.
2. Report number of customers, columns (f) and (g), on the basis of meters, except that where separate meter readings are added for billing purposes, one customer should be counted for each group of meters added. The average number of customers means the average of twelve figures at the close of each month.
3. Report quantities of natural gas sold in therms (14.73 psia at 60 F).
4. Report gas service revenues and therms sold by rate schedule.
5. If increases or decreases from previous year (columns (c),(e), and (g)), are not derived from previously reported figures, explain any inconsistencies in a footnote.

Line No.	Title of Account (a)	Operating Revenues		Therms of Natural Gas Sold		Avg. No. of Natural Gas Customers Per Mo.	
		Amount for Year (b)	Amount for Previous Year (c)	Current Year (d)	Previous Year (e)	Current Year (f)	Previous Year (g)
1	Gas Service Revenues						
2	Firm Sales Service						
3	480	\$ 196,307	\$ 184,024	69,507	72,459	560	567
4	481	\$ 93,754	\$ 66,224	131,576	64,300	28	27
5	481						
6	481						
7	481						
8	481						
9	Interruptible Sales Service						
10	481						
11	481						
12	Firm Transportation Service						
13	489	\$ 46,487	\$ 17,974				
14	489						
15	489						
16	Interruptible Transportation Serv.						
17	489	\$ -	\$ -				
18	489						
19	482 Other Sales to Public Authorities						
20	484 Flex Rate - Refund						
21	TOTAL Sales to Ultimate Consumers	\$ 336,548	\$ 268,222	201,083	136,759	-	-
22	483 Sales for Resale						
23	Off-System Sales						
24	TOTAL Nat. Gas Service Revenues	\$ 336,548	\$ 268,222				
25	TOTAL Gas Service Revenues	\$ 336,548	\$ 268,222				
26	Other Operating Revenues						
27	485 Intracompany Transfers						
28	487 Forfeited Discounts	\$ 7,618	\$ 7,620				
29	488 Misc. Service Revenues	\$ 7,326	\$ 8,157				
30	489 Rev. from Trans. of Gas of Others	\$ 1,748	\$ 383				
31	not included in above rate schedules)						
32	493 Rent from Gas Property						
33	494 Interdepartmental Rents						
34	495 Other Gas Revenues						
35	Initial Connection						
36	Reconnect for Cause						
37	Collection in lieu of disconnect						
38	Returned Check						
39	Other	\$ (114,741)	\$ (71,786)				
40	495.1 Overrecoveries Purchased Gas						
41	TOTAL Other Operating Revenues	\$ (98,049)	\$ (55,626)				
42	TOTAL Gas Operating Revenues	\$ 238,499	\$ 212,597				
43	(Less) 496 Provision for Rate Refunds	\$ (16,931)	\$ 16,931				
44	TOTAL Gas Operating Revenues Net of Provision for Refunds	\$ 221,568	\$ 229,528				
45	Sales for Resale						
46	Other Sales to Public Authority						
47	Interdepartmental Sales						
48	TOTAL	\$ 221,568	\$ 229,528	201,083	136,759		

Notes

**Note - Prior year was adjusted because Line 28 and Line 30 was mistakenly reported on line 39

Name of Respondent		For the Year Ended	
Florida Public Utilities Company - Fort Meade Division		December 31, 2019	
GAS OPERATION AND MAINTENANCE EXPENSES			
If the amount for previous year is not derived from previously reported figures, explain in footnotes.			
Line No.	Account	Amount for Current Year	Amount for Previous Year
1	1. Production Expenses		
2	A. TOTAL Manufactured Gas Production (Total of Accounts 700-742)		
3	B. TOTAL Natural Gas Prod. and Gathering (Total of Accts. 750 - 769)		
4	C. TOTAL Products Extraction (Total of Accounts 770 through 791)		
5	D. TOTAL Exploration and Development (Total of Accts. 795 through 798)		
6	E. Other Gas Supply Expenses		
7	Operation		
8	800 Natural Gas Well Head Purchases		
9	800.1 Natural Gas Well Head Purchases, Intracompany Transfers		
10	801 Natural Gas Field Line Purchases		
11	802 Natural Gas Gasoline Plant Outlet Purchases		
12	803 Natural Gas Transmission Line Purchases		
13	804 Natural Gas City Gate Purchases		
14	804.1 Liquefied Natural Gas Purchases		
15	805 Other Gas Purchases	\$ 1,742	\$ 378
16	805.1 Purchased Gas Cost Adjustments - Debit/(Credit)		
17	TOTAL Purchased Gas (Total of Lines 8 to 16)	\$ 1,742	\$ 378
18	806 Exchange Gas		
19	Purchased Gas Expenses		
20	807.1 Well Expenses--Purchased Gas		
21	807.2 Operation of Purchased Gas Measuring Stations		
22	807.3 Maintenance of Purchased Gas Measuring Stations		
23	807.4 Purchased Gas Calculations Expenses		
24	807.5 Other Purchased Gas Expenses		
25	TOTAL Purchased Gas Expenses (Total of lines 20 through 24)		
26	808.1 Gas Withdrawn from Storage--Debit		
27	(Less) 808.2 Gas Delivered to Storage--Credit		
28	809.1 Withdrawals of Liquefied Natural Gas for Processing--Debit		
29	(Less) 809.2 Deliveries of Natural Gas for Processing--Credit		
30	Gas Used in Utility Operations--Credit		
31	810 Gas Used for Compressor Station Fuel--Credit		
32	811 Gas Used for Products Extraction--Credit		
33	812 Gas Used for Other Utility Operations--Credit		
34	TOTAL Gas Used in Utility Operations--Credit (Lines 31 through 33)		
35	813 Other Gas Supply Expenses		
36	TOTAL Other Gas Supply Exp. (Total of Lines 17,18,25,26 through 29,34,35)	\$ 1,742	\$ 378
37	TOTAL Production Expenses (Total of Lines 2,3,4,5 and 36)	\$ 1,742	\$ 378
38	2. Natural Gas Storage, Terminating and Processing Expenses		
39	A. TOTAL Underground Storage Expenses (Total of Accounts 814 through 837)	\$ -	\$ -
40	B. TOTAL Other Storage Expenses (Total of Accounts 840 through 843.9)		
41	C. TOTAL Liquefied Nat Gas Terminating & Processing Expenses (Total of Accounts 844.1 through 847.8)		
42	TOTAL Natural Gas Storage (Total of lines 39, 40, and 41)	\$ -	\$ -
43	3. Transmission Expenses		
44	TOTAL Transmission Expenses (Total of Accounts 850 through 867)	\$ -	\$ -
45			
46			

Name of Respondent		For the Year Ended	
Florida Public Utilities Company - Fort Meade Division		December 31, 2019	
GAS OPERATION AND MAINTENANCE EXPENSES (Continued)			
Line No.	Account	Amount for Current Year	Amount for Previous Year
47	4. Distribution Expenses		
48	Operation		
49	870 Operation Supervision and Engineering	\$ 7,881	\$ 3,813
50	871 Distribution Load Dispatching	\$ 14,648	\$ 13,245
51	872 Compressor Station Labor and Expenses	\$ -	\$ -
52	873 Compressor Station Fuel and Power	\$ -	\$ -
53	874 Mains and Services Expenses	\$ -	\$ -
54	875 Measuring and Regulating Station Expenses--General	\$ -	\$ -
55	876 Measuring and Regulating Station Expenses--Industrial	\$ -	\$ -
56	877 Measuring and Regulating Station Expenses--City Gate Check Station	\$ 1,671	\$ 6,363
57	878 Meter and House Regulator Expenses	\$ 15,474	\$ 15,013
58	879 Customer Installations Expenses	\$ (23)	\$ (46)
59	880 Other Expenses	\$ -	\$ -
60	881 Rents	\$ -	\$ -
61	TOTAL Operation (Total of lines 49 through 60)	\$ 39,651	\$ 38,388
62	Maintenance		
63	885 Maintenance Supervision and Engineering	\$ 24	\$ 174
64	886 Maintenance of Structures and Improvements	\$ -	\$ -
65	887 Maintenance of Mains	\$ 150	\$ 50
66	888 Maintenance of Compressor Station Equipment	\$ -	\$ -
67	889 Maintenance of Meas. and Reg. Sta. Equip.--General	\$ -	\$ -
68	890 Maintenance of Meas. and Reg. Sta. Equip.--Industrial	\$ -	\$ -
69	891 Maintenance of Meas. and Reg. Sta. Equip.--City Gate Check Station	\$ -	\$ -
70	892 Maintenance of Services	\$ 1,730	\$ -
71	893 Maintenance of Meters and House Regulators	\$ 255	\$ 130
72	894 Maintenance of Other Equipment	\$ -	\$ 1,188
73	TOTAL Maintenance (Total of Lines 63 through 72)	\$ 2,159	\$ 1,542
74	TOTAL Distribution Expenses (Total of Lines 61 and 73)	\$ 41,809	\$ 39,930
75	5. Customer Accounts Expenses		
76	Operation		
77	901 Supervision	\$ 3,237	\$ 3,387
78	902 Meter Reading Expenses	\$ 19,315	\$ 19,030
79	903 Customer Records and Collection Expenses	\$ 13,652	\$ 16,070
80	904 Uncollectible Accounts	\$ 925	\$ 1,505
81	905 Miscellaneous Customer Accounts Expenses	\$ -	\$ -
82	TOTAL Customer Accounts Expenses (Total of Lines 77 through 81)	\$ 37,130	\$ 39,992
83	6. Customer Service and Informational Expenses		
84	Operation		
85	907 Supervision	\$ 10,600	\$ 8,751
86	908 Customer Assistance Expenses	\$ -	\$ -
87	909 Informational and Instructional Expenses	\$ -	\$ -
88	910 Miscellaneous Customer Service and Informational Expenses	\$ -	\$ -
89	TOTAL Customer Service and Informational Expenses (Total of Lines 85 through 88)	\$ 10,600	\$ 8,751
90	7. Sales Expenses		
91	Operation		
92	911 Supervision	\$ 540	\$ -
93	912 Demonstrating and Selling Expenses	\$ 4,391	\$ 8,375
94	913 Advertising Expenses	\$ 1,615	\$ 1,814
95	916 Miscellaneous Sales Expenses	\$ -	\$ -
96	TOTAL Sales Expenses (Total of lines 92 through 95)	\$ 6,546	\$ 10,189
97			

Name of Respondent		For the Year Ended	
Florida Public Utilities Company - Fort Meade Division		December 31, 2019	
GAS OPERATION AND MAINTENANCE EXPENSES (Continued)			
Line No.	Account	Amount for Current Year	Amount for Previous Year
98	8. Administrative and General Expenses		
99	Operation		
100	920 Administrative and General Salaries	\$ 42,071	\$ 40,656
101	921 Office Supplies and Expenses	\$ 15,173	\$ 16,502
102	(Less) (922) Administrative Expenses Transferred--Credit	\$ -	\$ -
103	923 Outside Services Employed	\$ 9,825	\$ 28,500
104	924 Property Insurance	\$ 303	\$ 296
105	925 Injuries and Damages	\$ 11,090	\$ 9,203
106	926 Employee Pensions and Benefits	\$ 14,738	\$ 14,246
107	927 Franchise Requirements		
108	928 Regulatory Commission Expenses		
109	(Less) (929) Duplicate Charges--Credit		
110	930.1 General Advertising Expenses	\$ 709	\$ 700
111	930.2 Miscellaneous General Expenses	\$ 31,305	\$ 10,987
112	931 Rents	\$ 2,148	\$ 2,366
113	TOTAL Operation (Total of lines 100 through 112)	\$ 127,361	\$ 123,456
114	Maintenance		
115	932 Maintenance of General Plant	\$ 879	\$ 1,169
116	TOTAL Administrative and General Expense (Total of lines 113 and 115)	\$ 128,240	\$ 124,625
117			
118	TOTAL Gas O&M Expenses (Lines 37, 42, 44, 74, 82, 89, 96, and 116)	\$ 226,067	\$ 223,865
119			
120			

NUMBER OF GAS DEPARTMENT EMPLOYEES	
	1. The data on number of employees should be reported for payroll period ending nearest to October 31, or any payroll period ending 60 days before or after October 31.
	2. If the respondent's payroll for the reporting period includes any special construction personnel, include such employees on line 3, and show the number of such special construction employees in a footnote.
	3. The number of employees assignable to the gas department from joint functions of combination utilities may be determined by estimate, on the basis of employee equivalents. Show the estimated number of equivalent employees attributed to the gas department from joint functions.
1	
2	1. Payroll Period Ended (Date) December 31, 2019
3	2. Total Regular Full-Time Employees 118
4	3. Total Part-Time and Temporary Employees -
5	4. Total Employees 118
6	
7	
8	Florida Public Utilities employees provide service for this division
9	
10	
11	
12	
13	

Name of Respondent		For the Year Ended		
Florida Public Utilities Company - Fort Meade Division		December 31, 2019		
GAS PURCHASES (Accounts 800, 800.1, 801, 802, 803, 804, 804.1, 805, 805.1)				
1. Provide totals for the following accounts:		The totals shown in columns (b) and (c) should agree with the books of account. Reconcile any differences in a footnote.		
800 - Natural Gas Well Head Purchases		2. State in column (b) the volume of purchased gas as finally measured for the purpose of determining the amount payable for the gas. Include current year receipts of makeup gas that was paid for in prior years.		
800.1- Natural Gas Well Head Purchases Intracompany Transfers		3. State in column (c) the dollar amount (omit cents) paid and previously paid for the volumes of gas shown in column (b).		
801 - Natural Gas Field Line Purchases		4. State in column (d) the average cost per Therm to the nearest hundredth of a cent. (Average means column (c) divided by column (b) multiplied by 100.)		
802 - Natural Gas Gasoline Plant Outlet Purchases				
803 - Natural Gas Transmission Line Purchases				
804 - Natural Gas City Gate Purchases				
804.1- Liquefied Natural Gas Purchases				
805 - Other Gas Purchases				
805.1- Purchases Gas Cost Adjustments				
Line No.	Account Title (a)	Gas Purchased- Therms (14.73 psia 60 F) (b)	Cost of Gas (In dollars) (c)	Average Cost Per Therm (To nearest .01 of a cent) (d)
1	800 - Natural Gas Well Head Purchases			
2	800.1 - Natural Gas Well Head Purchases, Intracompany Transfers			
3	801 - Natural Gas Field Line Purchases			
4	802 - Natural Gas Gasoline Plant Outlet Purchases			
5	803 - Natural Gas Transmission Line Purchases			
6	804 - Natural Gas City Gate Purchases			
7	804.1 - Liquefied Natural Gas Purchases			
8	805 - Other Gas Purchases		\$ 1,742	
9	805.1 - Purchased Gas Cost Adjustments			
10	TOTAL (Total of lines 1 through 9)		\$ 1,742	
Notes to Gas Purchases				
805 (Other Gas Purchases) Swing Service Cost allocated from Affiliates				

GAS USED IN UTILITY OPERATIONS - CREDIT (Accounts 812)				
1. Report below particulars (details) of credits during the year to Accounts 810, 811 and 812 which offset charges to operating expenses or other accounts for the cost of gas from the respondent's own supply.		4. If any natural gas was used by the respondent for which a change was not made to the appropriate operating expense or other account, list separately in column (c) the Therms of gas used, omitting entries in columns (d) and (e).		
2. Natural gas means either natural gas unmixed, or any mixture of natural and manufactured gas.		5. Report pressure base of measurement of gas volumes at 14.73 psia at 60 degrees F.		
3. If the reported Therms for any use is an estimated quantity, state such fact in a footnote.				
Line No.	Purpose for Which Gas Was Used (a)	Account Charged (b)	Therms of Gas Used (c)	Natural Gas Amount of Credit (d)
1	812 Gas used for Other Utility Operations Credit (Report separately for each principal uses. Group minor uses.)			
2	N/A			
3				
4				
5				
6				
7				
8				
9				
10				
11				
12				
13				
14				
15				
16				
17				
18	TOTAL			

Name of Respondent	For the Year Ended
Florida Public Utilities Company - Fort Meade Division	December 31, 2019

REGULATORY COMMISSION EXPENSES (Account 928)

1. Report particulars (details) of regulatory commission expenses incurred during the current year (or incurred in previous years if being amortized) relating to formal cases before a regulatory body, or cases in which such a body was a party.
2. Show in column (h) any expenses incurred in prior years which are being amortized. List in column (a) the period of amortization.

3. The totals of columns (c), (f), (h), and (i) must agree with the totals shown at the bottom of page 19 for Account 186
4. List in Column (d) and (e) expenses incurred during year which were charged currently to income, plant, or other accounts.
5. Minor items (less than \$25,000) may be grouped.

Line No.	Description (Name of regulatory commission, the docket number, and a description of the case.) (a)	Total Expenses to Date (b)	Deferred in Account 186 Beginning of Year (c)	Expenses Incurred During Year		Amortized During Year		Deferred in Account 186 End of Year (i)	
				Charged Currently to		Deferred to	Contra Account (g)		Amount (h)
				Account No. (d)	Amount (e)	Account 186 (f)			
1	Not Applicable								
2									
3									
4									
5									
6									
7									
8									
9									
10									
11									
12									
13									
14									
15									
16									
17	TOTAL	\$ -	\$ -		\$ -	\$ -		\$ -	

MISCELLANEOUS GENERAL EXPENSES (Account 930.2) (Gas)

Line No.	Description (a)	Amount (b)
1	Industry Association Dues	\$ 66
2	Experimental and General Research Expenses: (a) Gas Research Institute (GRI) (b) Other	
3	Publishing and distributing information and reports to stockholders; trustee, registrar, and transfer agent fees and expenses, and other expenses of servicing outstanding securities of the Respondent.	
4	Other expenses (items of \$5,000 or more must be listed separately in this column showing the (1) purpose, (2) recipient and (3) amount of such items. Amounts of less than \$5,000 may be grouped by classes if the number of items so grouped is shown.)	
5		
6		
7		
8	Misc Board of Director Expenses	\$ 1,753
9	Governmental Affairs Misc Expense	\$ 29,121
10	Miscellaneous Other	\$ 365
11		
12		
13		
14		
15		
16		
17		
18		
19		
20	TOTAL	\$ 31,305

DISTRIBUTION OF SALARIES AND WAGES

Report below the distribution of total salaries and wages for the year. Segregate amounts originally charged to clearing accounts to Utility Departments, Construction, Plant Removals, and Other Accounts, and enter such amounts in the appropriate lines and columns provided. In determining this segregation of salaries and wages originally charged to clearing accounts, a method of approximation giving substantially correct results may be used.

Line No.	Classification (a)	Direct Payroll Distribution (b)	Allocation of Payroll Charged for Clearing Accounts (c)	Total (d)
1	Electric			
2	TOTAL Operation and Maintenance - Electric			
3	Gas			
4	Operation			
5	Production - Manufd. Gas & Nat.Gas (inc. Expl. and Dev.); Other Gas Supply; Storage, LNG, Terminaling & Processing			
6	Transmission			
7	Distribution	\$ 18,978		
8	Customer Accounts			
9	Customer Service and Informational	\$ 8,130		
10	Sales	\$ 3,822		
11	Administrative and General	\$ 48,193		
12	TOTAL Operation (Total of lines 5 through 11)	\$ 79,122		
13	Maintenance			
14	Production - Manufd. Gas & Nat.Gas (inc. Expl. and Dev.); Other Gas Supply; Storage, LNG, Terminaling & Processing			
15	Transmission			
16	Distribution	\$ 20		
17	Administrative and General			
18	TOTAL Maintenance (Total of lines 14 through 17)	\$ 20		
19	Total Operation and Maintenance	\$ 79,142		
20	Production - Manufd. Gas & Nat.Gas (inc. Expl. and Dev.); Other Gas Supply; Storage, LNG, Terminaling & Processing	\$ -		
21	Transmission (Enter Total of lines 6 and 15)	\$ -		
22	Distribution (Total of lines 7 and 16)	\$ 18,998		
23	Customer Accounts (Transcribe from line 8)	\$ -		
24	Customer Service and Informational (Transcribe from line 9)	\$ 8,130		
25	Sales (Transcribe from line 10)	\$ 3,822		
26	Administrative and General (Total of lines 11 and 17)	\$ 48,193		
27	TOTAL Operation and Maint. (Total of lines 20 through 26)	\$ 79,142	\$ -	\$ 79,142
28	Other Utility Departments			
29	Operation and Maintenance			
30	TOTAL All Utility Dept. (Total of lines 2, 27, and 29)	\$ 79,142	\$ -	\$ 79,142
31	Utility Plant			
32	Construction (By Utility Departments)			
33	Electric Plant			
34	Gas Plant	\$ 2,297	\$ -	\$ 2,297
35	Other			
36	TOTAL Construction (Total of lines 33 through 35)	\$ 2,297	\$ -	\$ 2,297
37	Plant Removal (By Utility Department)			
38	Electric Plant			
39	Gas Plant	\$ 673	\$ -	\$ 673
40	Other			
41	TOTAL Plant Removal (Total of lines 38 through 40)	\$ 673	\$ -	\$ 673
42				
43	Other Accounts (Specify):			
44				
45				
46				
47				
48				
49				
50				
51				
52				
53	TOTAL Other Accounts	\$ -		\$ -
54	TOTAL SALARIES AND WAGES	\$ 82,112	\$ -	\$ 82,112

Name of Respondent		For the Year Ended
Florida Public Utilities Company - Fort Meade Division		December 31, 2019
CHARGES FOR OUTSIDE PROFESSIONAL AND OTHER CONSULTATIVE SERVICES		
<p>1. Report the information specified below for all charges made during the year included in any account (including plant accounts) for outside consultative and other professional services. (These services include rate, management, construction, engineering, research, financial, valuation, legal, accounting, purchasing, advertising, labor relations, and public relations, rendered the respondent under written or oral arrangement, for which aggregate payments were made during the year to any corporation, partnership, organization of any kind, or individual [other than for services as an employee or for payments made for medical and related services] amounting to more than \$25,000, including</p>		
<p>payments for legislative services, except those which should be reported in Account 426.4 - Expenditures for Certain Civic, Political and Related Activities.</p> <p>(a) Name of person or organization rendering services, (b) description of services received, (c) basis of charges, (d) total charges for the year, detailing account charged.</p> <p>2. For any services which are of a continuing nature, give the date and term of contract.</p> <p>3. Designate with an asterisk associated companies.</p>		
	Description	Amount
1	N/A	
2		
3		
4		
5		
6		
7		
8		
9		
10		
11		
12		
13		
14		
15		
16		
17		
18		
19		
20		
21		
22		
23		
24		
25		
26		
27		
28		

PARTICULARS CONCERNING CERTAIN INCOME DEDUCTIONS AND INTEREST CHARGES ACCOUNTS		
<p>Report the information specified below, in the order given for the respective income deduction and interest charges accounts. Provide a subheading for each account and total for the account. Additional columns may be added if deemed appropriate with respect to any account.</p> <p>(a) Miscellaneous Amortization (Account 425) - Describe the nature of items included in this account, the contra account charges, the total of amortization charged for the year, and the period of amortization.</p> <p>(b) Miscellaneous Income Deductions - Report the nature, payee, and amount of other income deductions for the year as required by Accounts 426.1, Donations; 426.2 Life Insurance; 426.3 Penalties; 426.4, Expenditures for Certain Civic, Political and Related Activities; and 426.5, Other Deductions, of the Uniform System of Accounts. Amounts of less than \$25,000 may be grouped by classes within the above accounts.</p> <p>(c) Other Interest Expense (Account 431) - Report particulars (Details) including the amount and interest rate for each other interest charges incurred during the year.</p>		
	Item	Amount
1		
2	Other Interest Charges - 431.0	\$ 11,352
3		
4		
5		
6		
7		
8		
9		
10		
11		
12		
13		
14		
15		
16		
17		
18		
19		
20		
21		
22		
23		
24		

**Reconciliation of Gross Operating Revenues
Annual Report versus Regulatory Assessment Fee Return**

For the current year, reconcile the gross operating revenues as reported on Page 26 of this report with the gross operating revenues as reported on the utility's regulatory assessment fee return. Explain and justify any differences between the reported gross operating revenues in column (f).

	(a)	(b)	(c)	(d)	(e)	(f)
Line No.	Description	Gross Operating Revenues per Page 26	Interstate and Sales for Resale Adjustments	Adjusted Intrastate Gross Operating Revenues	Intrastate Gross Operating Revenues per RAF Return	Difference (d) - (e)
1	Total Sales to Ultimate Customers (480-482, 484)	\$ 238,499	\$ -	\$ -	\$ 221,568	\$ 16,931
2	Sales for Resale (483)	\$ -	\$ -	\$ -	\$ -	\$ -
3	Total Natural Gas Service Revenues	\$ -	\$ -	\$ -	\$ -	\$ -
4	Total Other Operating Revenues (485-495)	\$ -	\$ -	\$ -	\$ -	\$ -
5	Total Gas Operating Revenues	\$ 238,499	\$ -	\$ -	\$ 221,568	\$ 16,931
6	Provision for Rate Refunds (496)	\$ (16,931)	\$ -	\$ -	\$ -	\$ (16,931)
7	Other (Specify)	\$ -	\$ -	\$ -	\$ -	\$ -
8						
9						
10	Total Gross Operating Revenues	\$ 221,568	\$ -	\$ -	\$ 221,568	\$ -

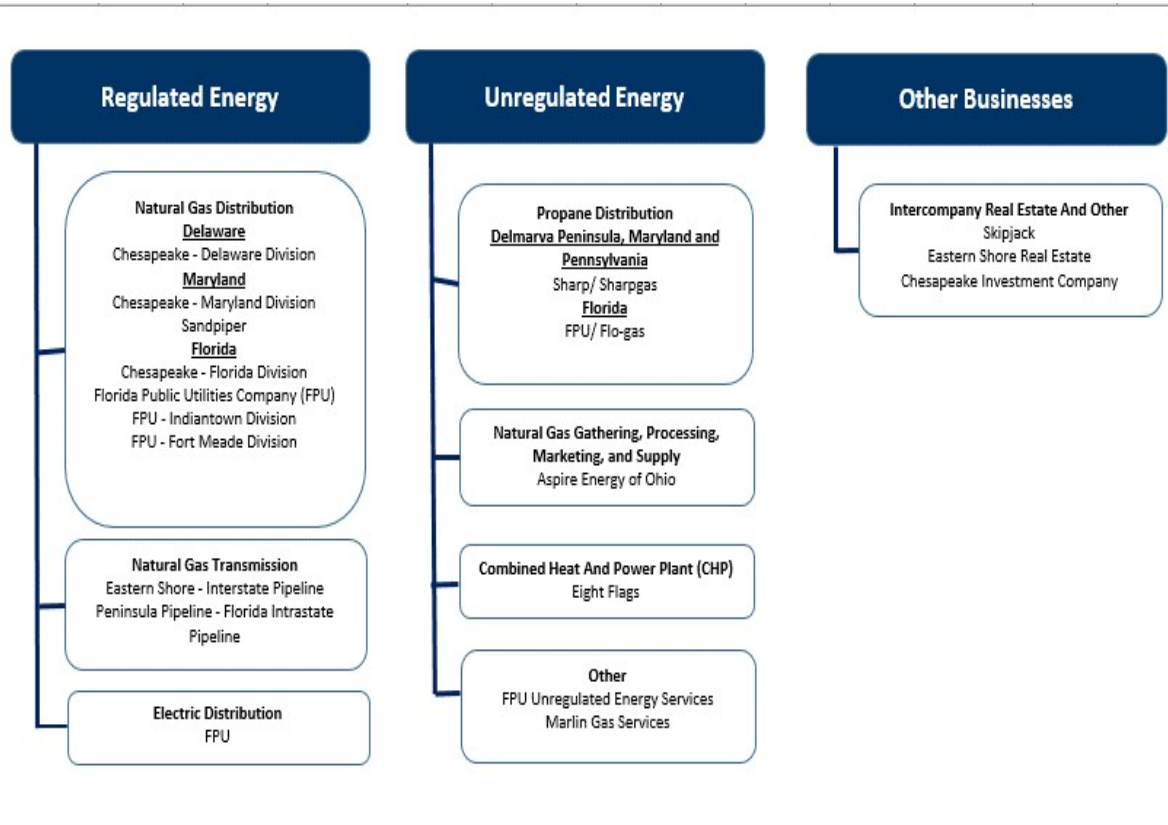
Notes:

Account 496 - Provision for Rate Refunds for 2018 was reported in Total Sales to Ultimate Customers in error on the Company's Regulatory Assessment Fee Return. The entry for the Provision for Rate Refunds related to TCJA for 2018 was reversed in 2019 due to the decision from FPSC Docket No. 20180054-GU.

CORPORATE STRUCTURE

Provide an updated organizational chart showing all affiliated companies, partnerships, etc.

Effective Date: December 31, 2019



Name of Respondent For the Year Ended

Florida Public Utilities Company - Fort Meade Division December 31, 2019

SUMMARY OF AFFILIATED TRANSFERS AND COST ALLOCATIONS

Grouped by affiliate, list each contract, agreement, or other business transaction exceeding a cumulative amount of \$300 in any one year, entered into between the Respondent and an affiliated business or financial organization, firm, or partnership identifying parties, amounts, dates, and product, asset, or service involved.

- (a) Enter name of affiliate.
- (b) Give description of type of service, or name the product involved.
- (c) Enter contract or agreement effective dates.
- (d) Enter the letter "p" if the service or product is purchased by the Respondent: "s" if the service or product is sold by the Respondent.
- (e) Enter utility account number in which charges are recorded.
- (f) Enter total amount paid, received, or accrued during the year for each type of service or product listed in column (c). Do not net amounts when services are both received and provided.

Name of Affiliate (a)	Type of Service and/or Name of Product (b)	Relevant Contract or Agreement and Effective Date (c)	Total Charge for Year		
			"p" or "s" (d)	Account Number (e)	Dollar Amount (f)
Chesapeake Utilities Corporation	Parent Company:				
	Corporate Services		p	Various	\$ 23,532
	Corporate Overheads		p	Various	\$ 26,133
	Shared Services		p	Various	\$ 17,451
Florida Public Utilites	Operations and Maintenane A&G		p	Various	\$ 131,680

Name of Respondent Florida Public Utilities Company - Fort Meade Division	For the Year Ended December 31, 2019
--	---

NEW OR AMENDED CONTRACTS WITH AFFILIATED COMPANIES

Provide a synopsis of each new or amended contract, agreement, or arrangement with affiliated companies for the purchase, lease, or sale of land, goods, or services (excluding tariffed items). The synopsis shall include, at a minimum, the terms, price, quantity, amount, and duration of the contracts.

Name of Affiliate	Synopsis of Contract
N/A	

INDIVIDUAL AFFILIATED TRANSACTIONS IN EXCESS OF \$25,000

Provide information regarding individual affiliated transactions in excess of \$25,000. Recurring monthly affiliated transactions which exceed \$25,000 per month should be reported annually in the aggregate. However, each land or property sales transaction even though similar sales recur, should be reported as a "non-recurring" item for the period in which it occurs.

Name of Affiliate	Description of Transaction	Dollar Amount
N/A		

ASSETS OR RIGHTS PURCHASED FROM OR SOLD TO AFFILIATES

Provide a summary of affiliated transactions involving asset transfers or the right to use assets.

Name of Affiliate	Description of Asset or Right	Cost/Orig. Cost	Accumulated Depreciation	Net Book Value	Fair Market Value	Purchase Price	Title Passed Yes/No
Purchases from Affiliates:							
N/A		\$	\$	\$	\$	\$	
Total						\$	
Sales to Affiliates:							
N/A		\$	\$	\$	\$	Sales Price	
Total						\$	-

EMPLOYEE TRANSFERS

List employees earning more than \$50,000 annually transferred to/from the utility to/from an affiliate company.

Company Transferred From	Company Transferred To	Old Job Assignment	New Job Assignment	Transfer Permanent or Temporary and Duration
N/A				